

Data Path : Z:\pestpcbsrv\HPCHEM1\ECD_D\Data\PD082921\
 Data File : PD065408.D
 Signal(s) : Signal #1: ECD1A.ch Signal #2: ECD2B.ch
 Acq On : 27 Aug 2021 13:34
 Operator : AR\AJ
 Sample : INDA401
 Misc :
 ALS Vial : 15 Sample Multiplier: 1

Instrument :
 ECD_D
 ClientSampleId :
 INDA4005

Integration File signal 1: autoint1.e
 Integration File signal 2: autoint2.e
 Quant Time: Aug 27 14:27:04 2021
 Quant Method : Z:\pestpcbsrv\HPCHEM1\ECD_D\Method\PD082921CLP.M
 Quant Title : GC Extractables
 QLast Update : Fri Aug 27 14:25:56 2021
 Response via : Initial Calibration
 Integrator: ChemStation

Volume Inj. : 1 µl
 Signal #1 Phase : ZB-MR2 Signal #2 Phase: ZB-MR1
 Signal #1 Info : 30M x 0.32mm x0.2 Signal #2 Info : 30M x 0.32mm x 0.50µm

	Compound	RT#1	RT#2	Resp#1	Resp#2	ng/ml	ng/ml

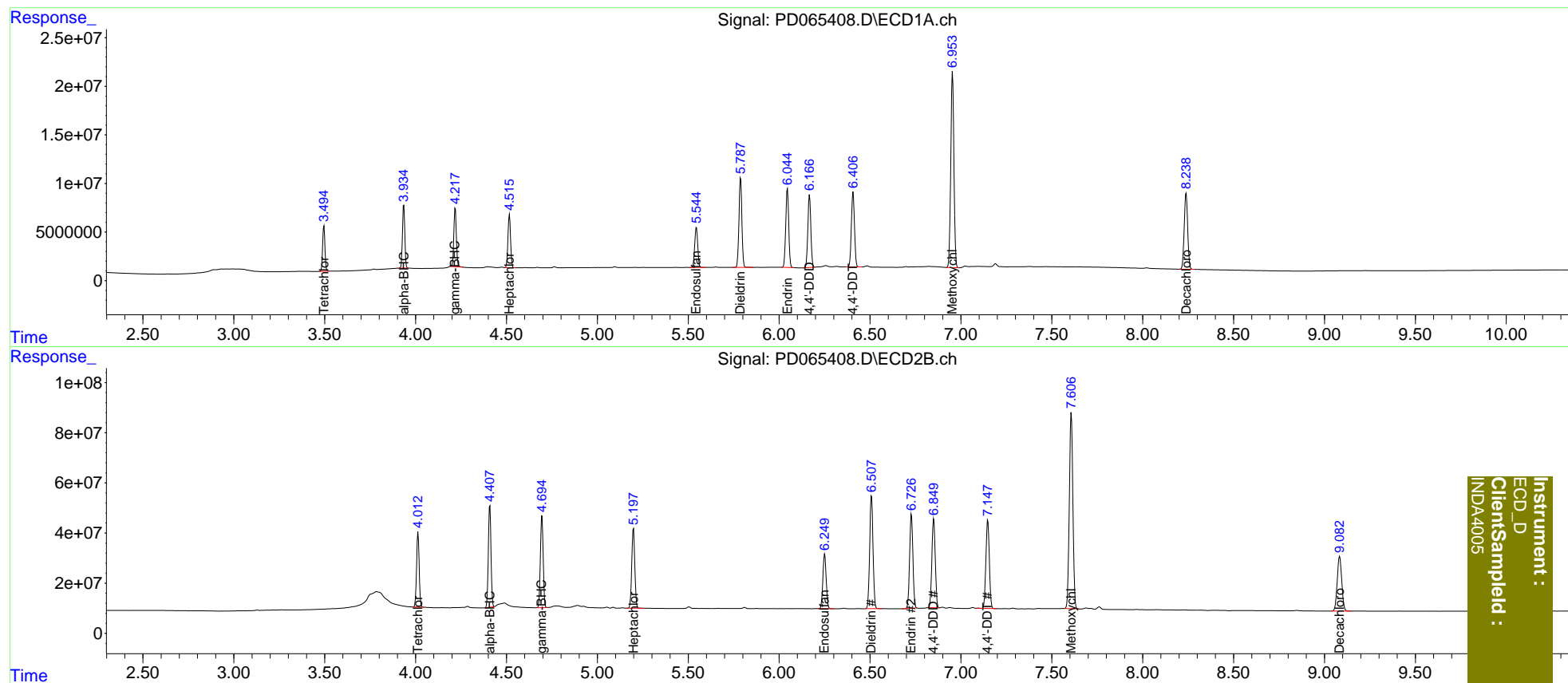
System Monitoring Compounds							
1)	SA Tetrachlo...	3.496	4.014	41375725	295.8E6	37.478	36.876
27)	SA Decachlor...	8.239	9.084	103.6E6	375.5E6	73.147	72.327
Target Compounds							
2)	A alpha-BHC	3.935	4.409	58738068	415.0E6	38.931	37.856
3)	MA gamma-BHC...	4.218	4.695	58717264	392.7E6	37.757	37.470
4)	MA Heptachlor	4.516	5.199	54955172	369.7E6	37.990	36.787
9)	A Endosulfan I	5.545	6.251	47577148	275.3E6	37.733	37.158
13)	MA Dieldrin	5.788	6.508	102.4E6	573.3E6	77.767	75.108
14)	MA Endrin	6.046	6.728	92143508	470.1E6	76.698	74.771
16)	A 4,4'-DDD	6.167	6.851	85010059	457.5E6	77.906	75.930
17)	MA 4,4'-DDT	6.407	7.148	91192137	463.8E6	77.581	74.860
20)	A Methoxychlor	6.954	7.607	241.5E6	1059.7E6	372.529	361.870

(f)=RT Delta > 1/2 Window (#)=Amounts differ by > 25% (m)=manual int.

Data Path : Z:\pestpcbsrv\HPCHEM1\ECD_D\Data\PD082921\
 Data File : PD065408.D
 Signal(s) : Signal #1: ECD1A.ch Signal #2: ECD2B.ch
 Acq On : 27 Aug 2021 13:34
 Operator : AR\AJ
 Sample : INDA401
 Misc :
 ALS Vial : 15 Sample Multiplier: 1

Integration File signal 1: autoint1.e
 Integration File signal 2: autoint2.e
 Quant Time: Aug 27 14:27:04 2021
 Quant Method : Z:\pestpcbsrv\HPCHEM1\ECD_D\Method\PD082921CLP.M
 Quant Title : GC Extractables
 QLast Update : Fri Aug 27 14:25:56 2021
 Response via : Initial Calibration
 Integrator: ChemStation

Volume Inj. : 1 µl
 Signal #1 Phase : ZB-MR2 Signal #2 Phase: ZB-MR1
 Signal #1 Info : 30M x 0.32mm x0.2 Signal #2 Info : 30M x 0.32mm x 0.50µm



Instrument :
 ECD_D
 ClientSampleId :
 INDA4005