

Data Path : Z:\pestpcbsrv\HPCHEM1\ECD_D\Data\PD082921\
 Data File : PD065413.D
 Signal(s) : Signal #1: ECD1A.ch Signal #2: ECD2B.ch
 Acq On : 27 Aug 2021 14:43
 Operator : AR\AJ
 Sample : PEM91
 Misc :
 ALS Vial : 3 Sample Multiplier: 1

Instrument :
 ECD_D
 ClientSampled :
 PEM095

Manual Integrations
 APPROVED

mohammad
 8/30/2021 1:15:50 PM

Integration File signal 1: autoint1.e
 Integration File signal 2: autoint2.e
 Quant Time: Aug 27 15:03:25 2021
 Quant Method : Z:\pestpcbsrv\HPCHEM1\ECD_D\Method\PD082921CLP.M
 Quant Title : GC Extractables
 QLast Update : Fri Aug 27 14:43:58 2021
 Response via : Initial Calibration
 Integrator: ChemStation

Volume Inj. : 1 µl
 Signal #1 Phase : ZB-MR2 Signal #2 Phase: ZB-MR1
 Signal #1 Info : 30M x 0.32mm x0.2 Signal #2 Info : 30M x 0.32mm x 0.50µm

	Compound	RT#1	RT#2	Resp#1	Resp#2	ng/ml	ng/ml

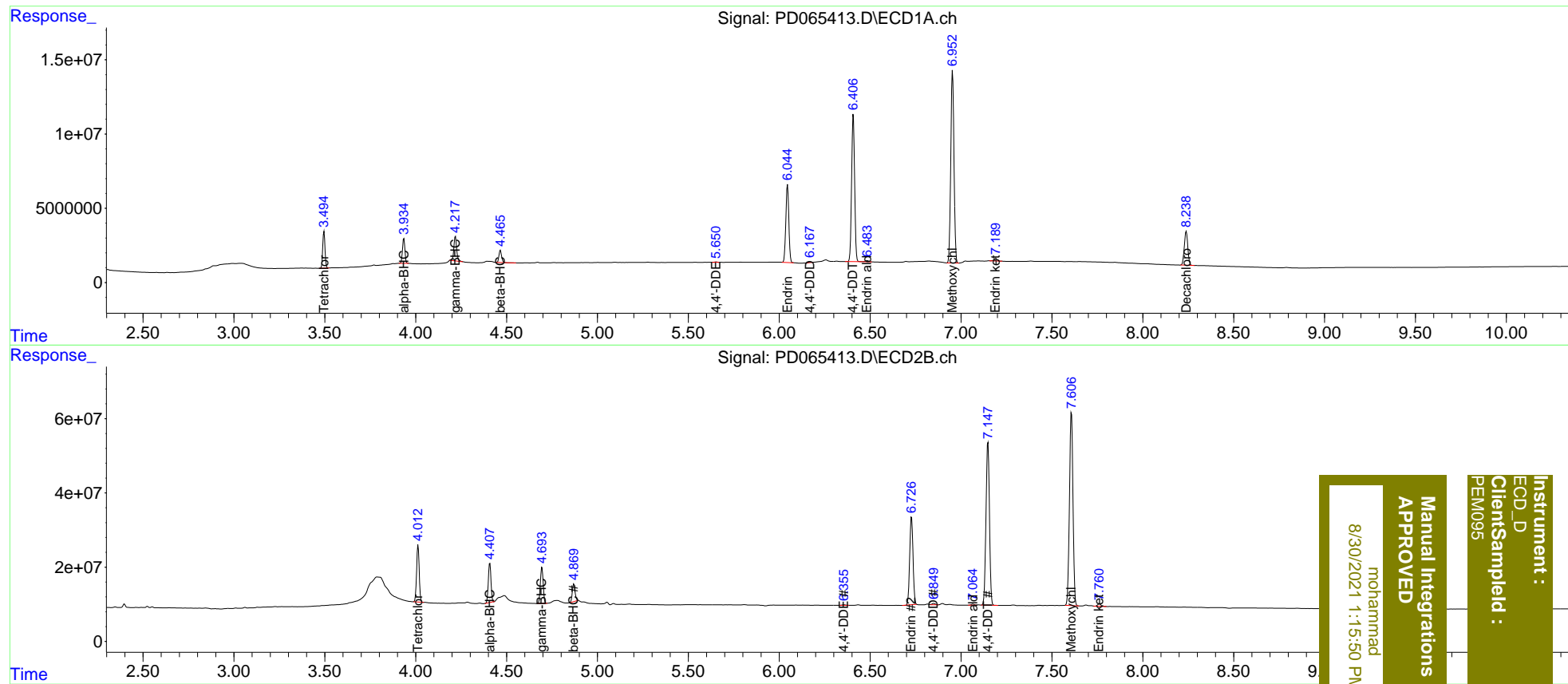
System Monitoring Compounds							
1)	SA Tetrachlo...	3.496	4.013	21491257	152.6E6	19.011	18.835
27)	SA Decachlor...	8.239	9.083	30200400	106.6E6	20.905	20.622
Target Compounds							
2)	A alpha-BHC	3.935	4.408	15589248	108.6E6	10.126	9.936
3)	MA gamma-BHC...	4.218	4.695	17753429	104.4E6	10.851	9.926
6)	B beta-BHC	4.466	4.870	8173034	51181861	11.078	10.662
12)	B 4,4'-DDE	5.650	6.355	303796	2000368	0.243m	0.270m
14)	MA Endrin	6.046	6.728	59561297	301.5E6	48.908	47.593
16)	A 4,4'-DDD	6.167	6.849	732047	4645454	0.667m	0.772m
17)	MA 4,4'-DDT	6.407	7.148	113.8E6	582.0E6	94.872	95.409
18)	B Endrin al...	6.483	7.064	1050360	3502445	1.048m	0.685m#
20)	A Methoxychlor	6.953	7.608	157.9E6	700.6E6	241.471	240.037
21)	B Endrin ke...	7.191	7.761	2183612	7553785	1.405	1.063

(f)=RT Delta > 1/2 Window (#)=Amounts differ by > 25% (m)=manual int.

Data Path : Z:\pestpcbsrv\HPCHEM1\ECD_D\Data\PD082921\
 Data File : PD065413.D
 Signal(s) : Signal #1: ECD1A.ch Signal #2: ECD2B.ch
 Acq On : 27 Aug 2021 14:43
 Operator : AR\AJ
 Sample : PEM91
 Misc :
 ALS Vial : 3 Sample Multiplier: 1

Integration File signal 1: autoint1.e
 Integration File signal 2: autoint2.e
 Quant Time: Aug 27 15:03:25 2021
 Quant Method : Z:\pestpcbsrv\HPCHEM1\ECD_D\Method\PD082921CLP.M
 Quant Title : GC Extractables
 QLast Update : Fri Aug 27 14:43:58 2021
 Response via : Initial Calibration
 Integrator: ChemStation

Volume Inj. : 1 µl
 Signal #1 Phase : ZB-MR2 Signal #2 Phase: ZB-MR1
 Signal #1 Info : 30M x 0.32mm x0.2 Signal #2 Info : 30M x 0.32mm x 0.50µm



Instrument : ECD_D
 Client Sample Id : PEM095

Manual Integrations
 APPROVED
 mohammed
 8/30/2021 1:15:50 PM