

Data Path : Z:\pestpcbsrv\HPCHEM1\ECD\_D\Data\PD083021\  
 Data File : PD065431.D  
 Signal(s) : Signal #1: ECD1A.ch Signal #2: ECD2B.ch  
 Acq On : 27 Aug 2021 21:58  
 Operator : AR\AJ  
 Sample : TOXAPH601  
 Misc :  
 ALS Vial : 40 Sample Multiplier: 1

Instrument :  
 ECD\_D  
 ClientSampleId :  
 TOXAPH6084

Integration File signal 1: autoint1.e  
 Integration File signal 2: autoint2.e  
 Quant Time: Aug 28 01:35:58 2021  
 Quant Method : Z:\pestpcbsrv\HPCHEM1\ECD\_D\Method\PD083021TCLP-CLP.M  
 Quant Title : GC Extractables  
 QLast Update : Sat Aug 28 01:33:19 2021  
 Response via : Initial Calibration  
 Integrator: ChemStation

Volume Inj. : 1 µl  
 Signal #1 Phase : ZB-MR2 Signal #2 Phase: ZB-MR1  
 Signal #1 Info : 30M x 0.32mm x0.2 Signal #2 Info : 30M x 0.32mm x 0.50µm

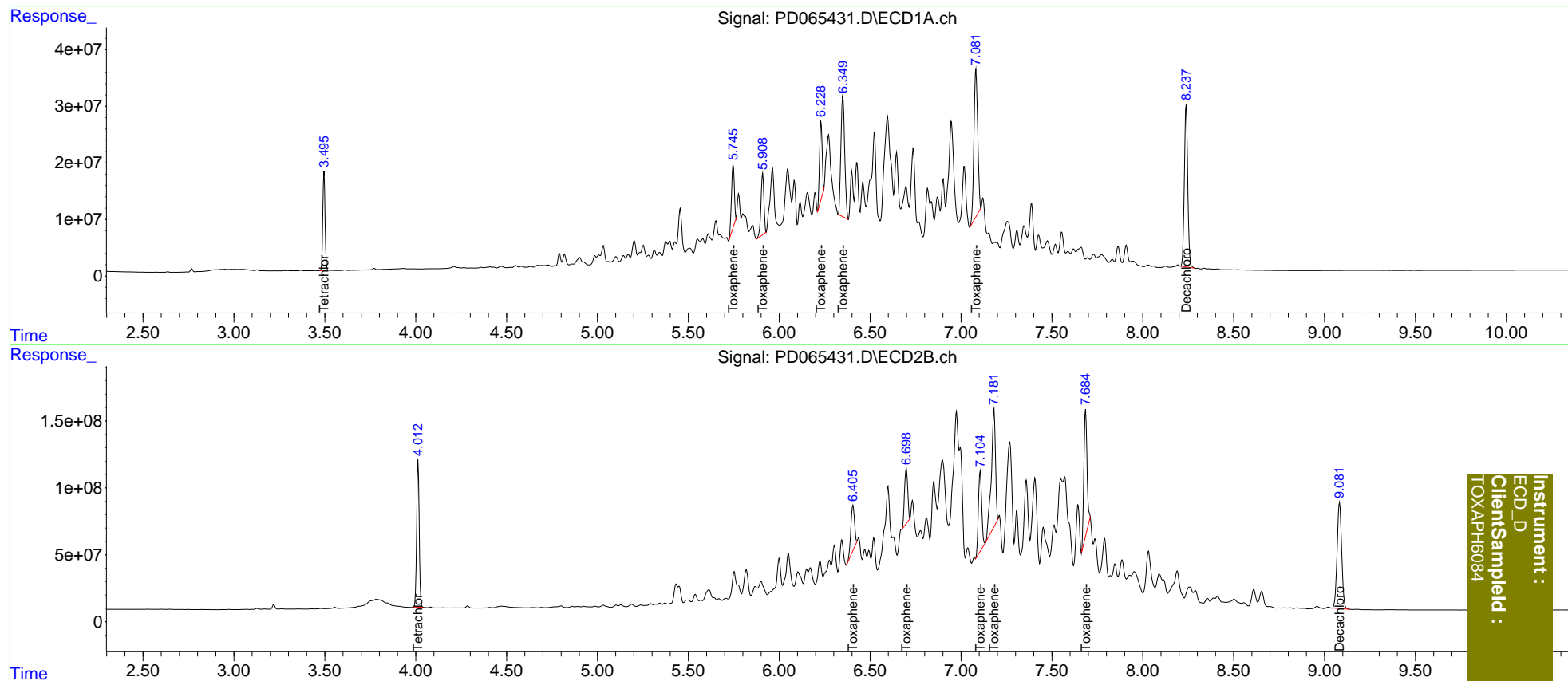
Compound	RT#1	RT#2	Resp#1	Resp#2	ng/ml	ng/ml
-----						
System Monitoring Compounds						
1) SA Tetrachlo...	3.496	4.013	150.7E6	1075.2E6	151.718	150.035
27) SA Decachlor...	8.239	9.083	371.2E6	1378.5E6	293.436	294.781
Target Compounds						
22) Toxaphene-1	5.747	6.406	119.3E6	461.4E6	15300.014	14484.746
23) Toxaphene-2	5.909	6.699	122.0E6	503.4E6	14871.204	14819.444
24) Toxaphene-3	6.230	7.106	135.3E6	755.3E6	14812.532	14639.693
25) Toxaphene-4	6.350	7.182	309.5E6	1412.8E6	15228.147	14792.197
26) Toxaphene-5	7.082	7.686	376.1E6	1165.3E6	15122.910	14948.508
-----						

(f)=RT Delta > 1/2 Window (#)=Amounts differ by > 25% (m)=manual int.

Data Path : Z:\pestpcbsrv\HPCHEM1\ECD\_D\Data\PD083021\  
 Data File : PD065431.D  
 Signal(s) : Signal #1: ECD1A.ch Signal #2: ECD2B.ch  
 Acq On : 27 Aug 2021 21:58  
 Operator : AR\AJ  
 Sample : TOXAPH601  
 Misc :  
 ALS Vial : 40 Sample Multiplier: 1

Integration File signal 1: autoint1.e  
 Integration File signal 2: autoint2.e  
 Quant Time: Aug 28 01:35:58 2021  
 Quant Method : Z:\pestpcbsrv\HPCHEM1\ECD\_D\Method\PD083021TCLP-CLP.M  
 Quant Title : GC Extractables  
 QLast Update : Sat Aug 28 01:33:19 2021  
 Response via : Initial Calibration  
 Integrator: ChemStation

Volume Inj. : 1 µl  
 Signal #1 Phase : ZB-MR2 Signal #2 Phase: ZB-MR1  
 Signal #1 Info : 30M x 0.32mm x0.2 Signal #2 Info : 30M x 0.32mm x 0.50µm



Instrument :  
 ECD\_D  
 ClientSampleId :  
 TOXAPH6084