

Data Path : Z:\pestpcbsrv\HPCHEM1\ECD_D\Data\PD083024\
 Data File : PD084803.D
 Signal(s) : Signal #1: ECD1A.ch Signal #2: ECD2B.ch
 Acq On : 28 Aug 2024 13:39
 Operator : AR\AJ
 Sample : INDA304
 Misc :
 ALS Vial : 14 Sample Multiplier: 1

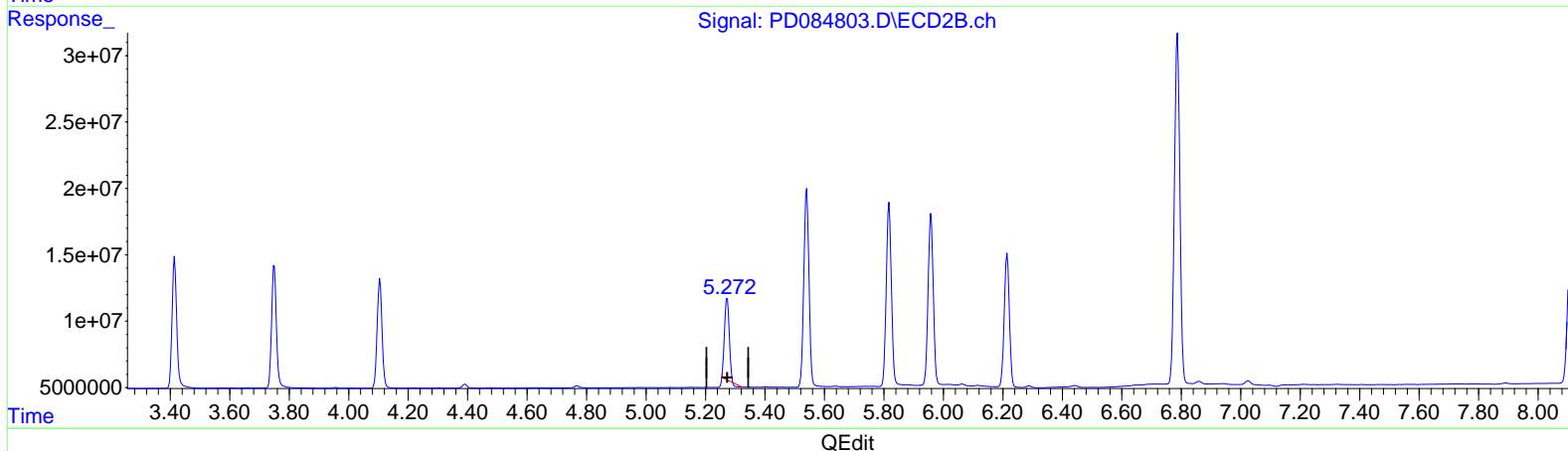
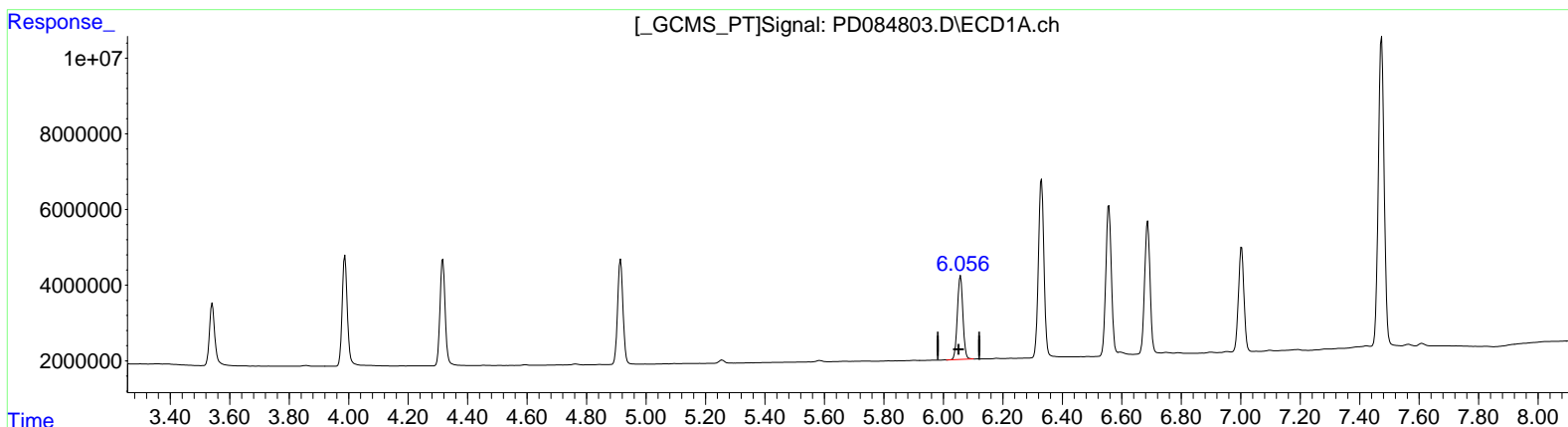
Instrument :
 ECD_D
 LabSampleID :
 INDA304

Manual Integrations APPROVED

Reviewed By : Abdul Mirza 08/29/2024
 Supervised By : Ankita Jodhani 08/29/2024

Integration File signal 1: autoint1.e
 Integration File signal 2: autoint2.e
 Quant Time: Aug 29 03:28:56 2024
 Quant Method : Z:\pestpcbsrv\HPCHEM1\ECD_D\Method\PD082524CLP.M
 Quant Title : GC Extractables
 QLast Update : Tue Aug 27 02:47:48 2024
 Response via : Initial Calibration
 Integrator: ChemStation

Volume Inj. : 1 µl
 Signal #1 Phase : ZB-MR1 Signal #2 Phase: ZB-MR2
 Signal #1 Info : 30M x 0.32mm x 0.5 Signal #2 Info : 30M x 0.32mm x 0.25µm



(9) Endosulfan I (A)
 6.058min 20.921 ng/ml
 response 28783021

(9) Endosulfan I #2 (A)
 5.273min 17.264 ng/ml
 response 66178574

Data Path : Z:\pestpcbsrv\HPCHEM1\ECD_D\Data\PD083024\
 Data File : PD084803.D
 Signal(s) : Signal #1: ECD1A.ch Signal #2: ECD2B.ch
 Acq On : 28 Aug 2024 13:39
 Operator : AR\AJ
 Sample : INDA304
 Misc :
 ALS Vial : 14 Sample Multiplier: 1

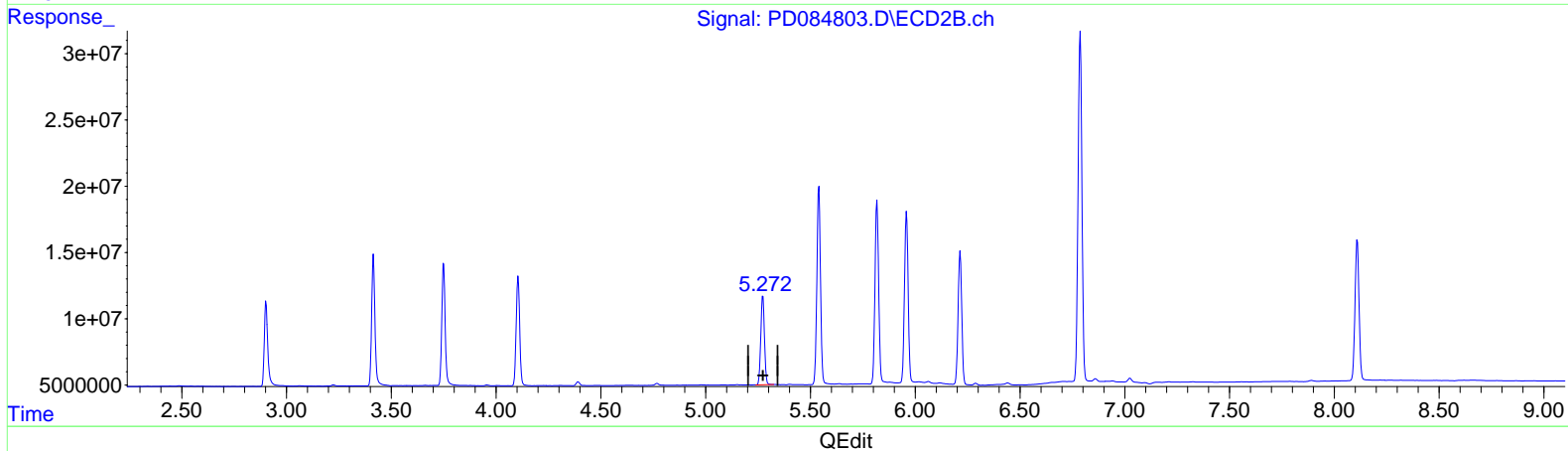
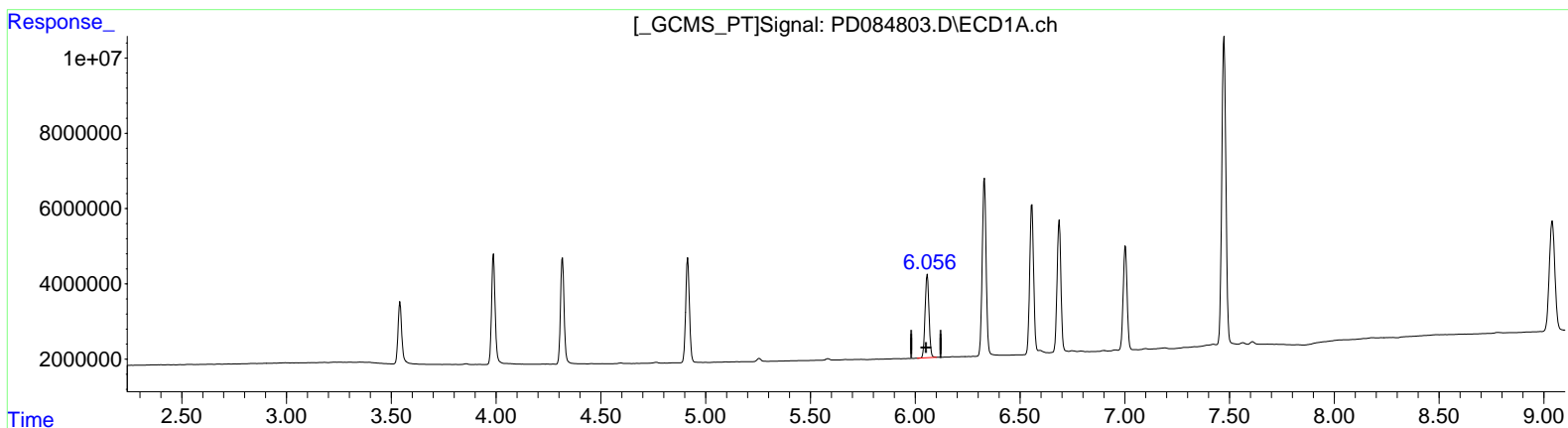
Instrument :
 ECD_D
 LabSampleID :
 INDA304

Manual Integrations APPROVED

Reviewed By : Abdul Mirza 08/29/2024
 Supervised By : Ankita Jodhani 08/29/2024

Integration File signal 1: autoint1.e
 Integration File signal 2: autoint2.e
 Quant Time: Aug 29 03:28:56 2024
 Quant Method : Z:\pestpcbsrv\HPCHEM1\ECD_D\Method\PD082524CLP.M
 Quant Title : GC Extractables
 QLast Update : Tue Aug 27 02:47:48 2024
 Response via : Initial Calibration
 Integrator: ChemStation

Volume Inj. : 1 µl
 Signal #1 Phase : ZB-MR1 Signal #2 Phase: ZB-MR2
 Signal #1 Info : 30M x 0.32mm x 0.5 Signal #2 Info : 30M x 0.32mm x 0.25µm



(9) Endosulfan I (A)

6.058min 20.921 ng/ml

response 28783021

(9) Endosulfan I #2 (A)

5.272min 21.508 ng/ml m

response 82446829

Data Path : Z:\pestpcbsrv\HPCHEM1\ECD_D\Data\PD083024\
 Data File : PD084803.D
 Signal(s) : Signal #1: ECD1A.ch Signal #2: ECD2B.ch
 Acq On : 28 Aug 2024 13:39
 Operator : AR\AJ
 Sample : INDA304
 Misc :
 ALS Vial : 14 Sample Multiplier: 1

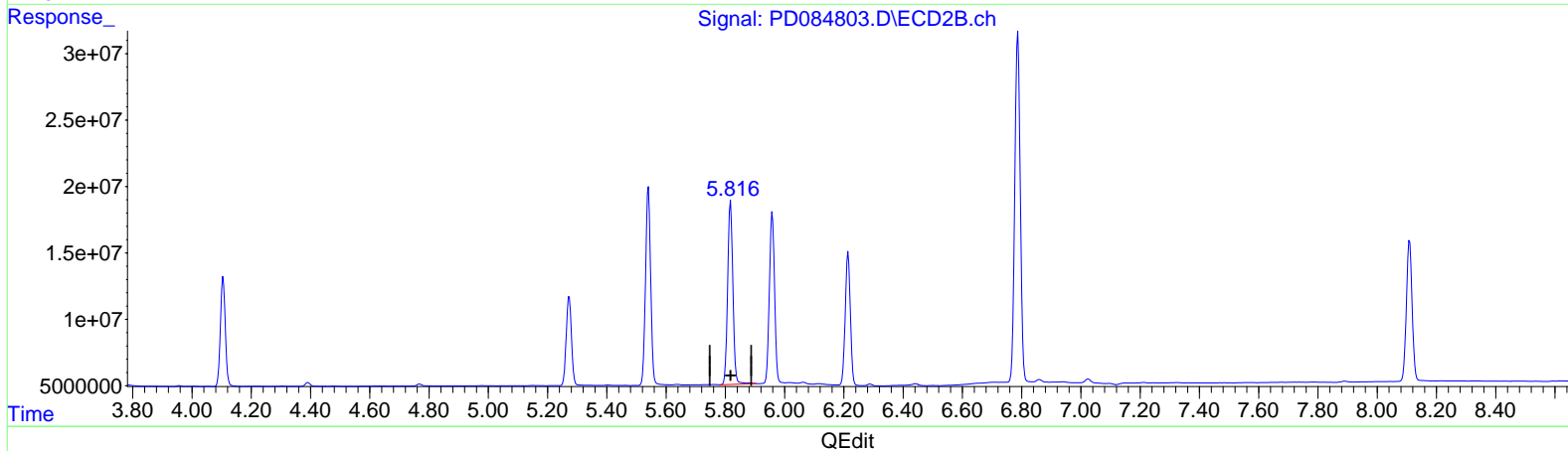
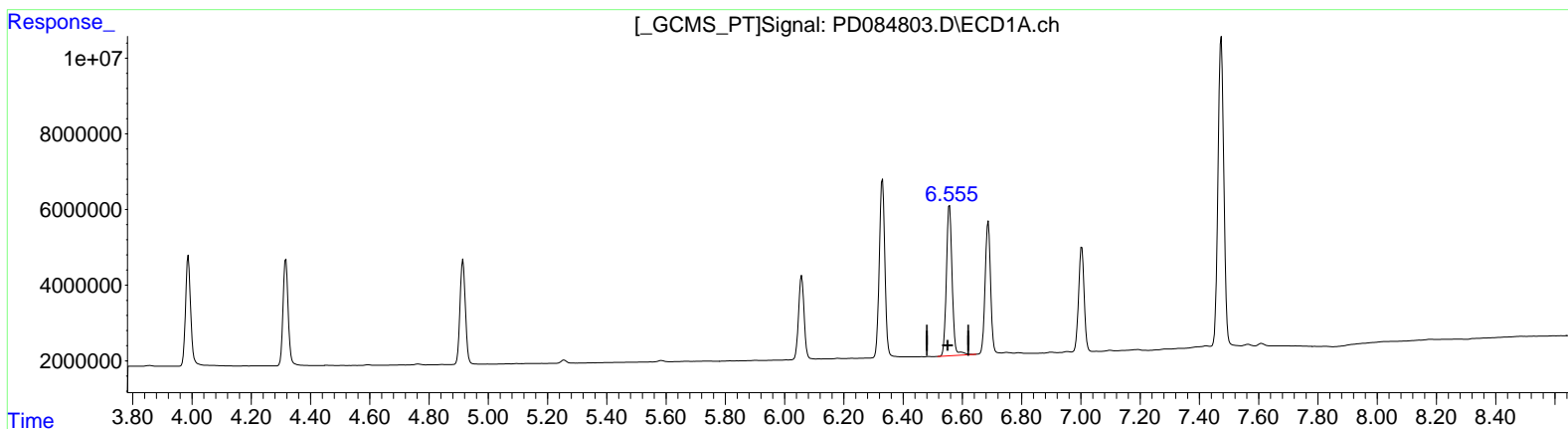
Instrument :
 ECD_D
 LabSampleId :
 INDA304

Manual Integrations APPROVED

Reviewed By : Abdul Mirza 08/29/2024
 Supervised By : Ankita Jodhani 08/29/2024

Integration File signal 1: autoint1.e
 Integration File signal 2: autoint2.e
 Quant Time: Aug 29 03:28:56 2024
 Quant Method : Z:\pestpcbsrv\HPCHEM1\ECD_D\Method\PD082524CLP.M
 Quant Title : GC Extractables
 QLast Update : Tue Aug 27 02:47:48 2024
 Response via : Initial Calibration
 Integrator: ChemStation

Volume Inj. : 1 µl
 Signal #1 Phase : ZB-MR1 Signal #2 Phase: ZB-MR2
 Signal #1 Info : 30M x 0.32mm x 0.5 Signal #2 Info : 30M x 0.32mm x 0.25µm



(14) Endrin (MA)
 6.557min 47.372 ng/ml
 response 53451771

(14) Endrin #2 (MA)
 5.818min 45.950 ng/ml
 response 170123183

Data Path : Z:\pestpcbsrv\HPCHEM1\ECD_D\Data\PD083024\
 Data File : PD084803.D
 Signal(s) : Signal #1: ECD1A.ch Signal #2: ECD2B.ch
 Acq On : 28 Aug 2024 13:39
 Operator : AR\AJ
 Sample : INDA304
 Misc :
 ALS Vial : 14 Sample Multiplier: 1

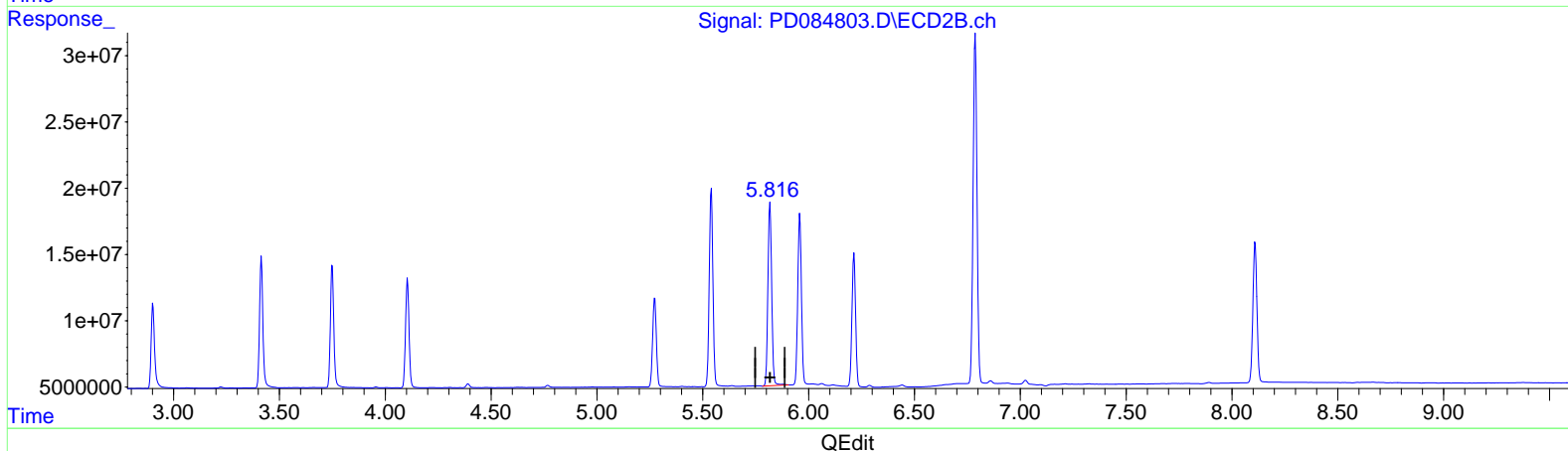
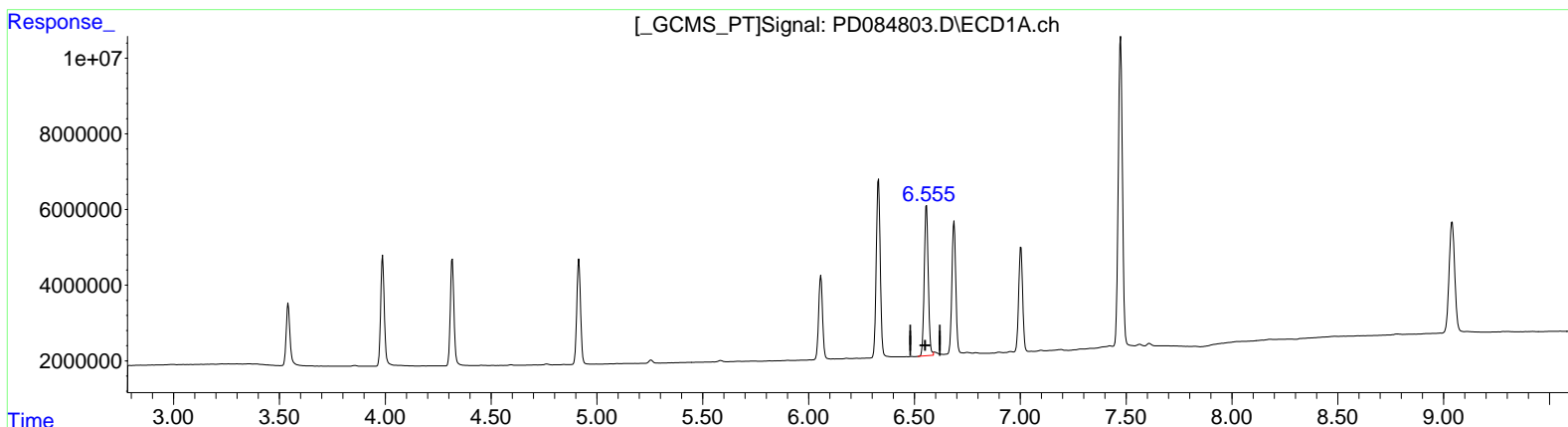
Instrument :
 ECD_D
 LabSampleId :
 INDA304

Manual Integrations APPROVED

Reviewed By : Abdul Mirza 08/29/2024
 Supervised By : Ankita Jodhani 08/29/2024

Integration File signal 1: autoint1.e
 Integration File signal 2: autoint2.e
 Quant Time: Aug 29 03:28:56 2024
 Quant Method : Z:\pestpcbsrv\HPCHEM1\ECD_D\Method\PD082524CLP.M
 Quant Title : GC Extractables
 QLast Update : Tue Aug 27 02:47:48 2024
 Response via : Initial Calibration
 Integrator: ChemStation

Volume Inj. : 1 µl
 Signal #1 Phase : ZB-MR1 Signal #2 Phase: ZB-MR2
 Signal #1 Info : 30M x 0.32mm x 0.5 Signal #2 Info : 30M x 0.32mm x 0.25µm



(14) Endrin (MA)
 6.555min 46.212 ng/ml m
 response 52143160

(14) Endrin #2 (MA)
 5.818min 45.950 ng/ml
 response 170123183