

Data Path : Z:\pestpcbsrv\HPCHEM1\ECD\_D\Data\PD083123\  
 Data File : PD077464.D  
 Signal(s) : Signal #1: ECD1A.ch Signal #2: ECD2B.ch  
 Acq On : 30 Aug 2023 08:33  
 Operator : ARVAJ  
 Sample : PEM149  
 Misc :  
 ALS Vial : 3 Sample Multiplier: 1

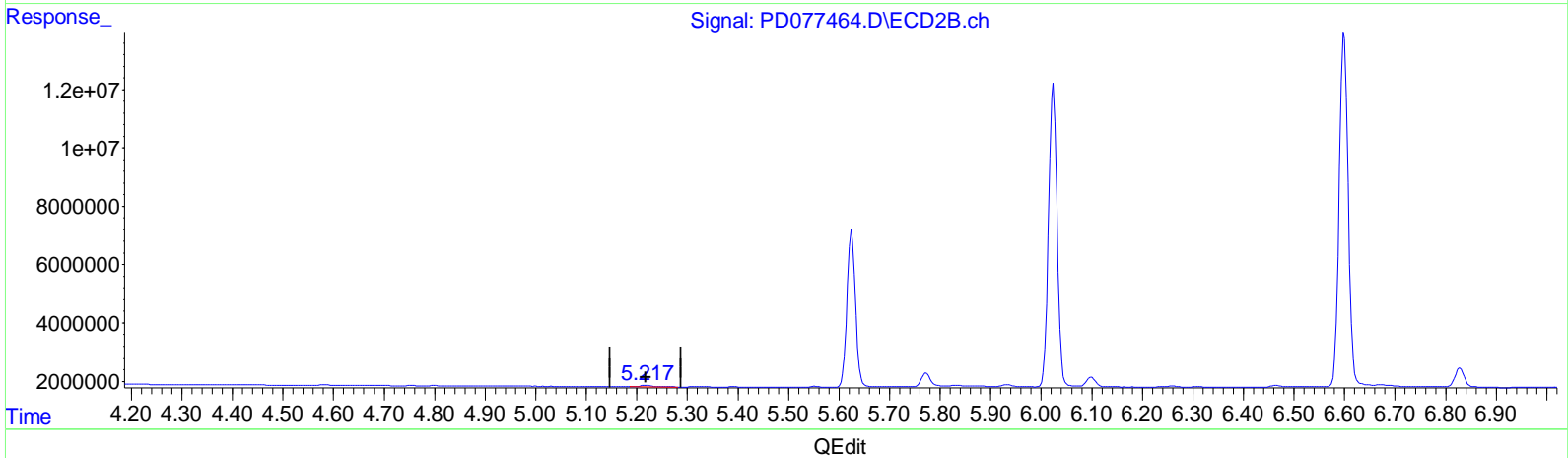
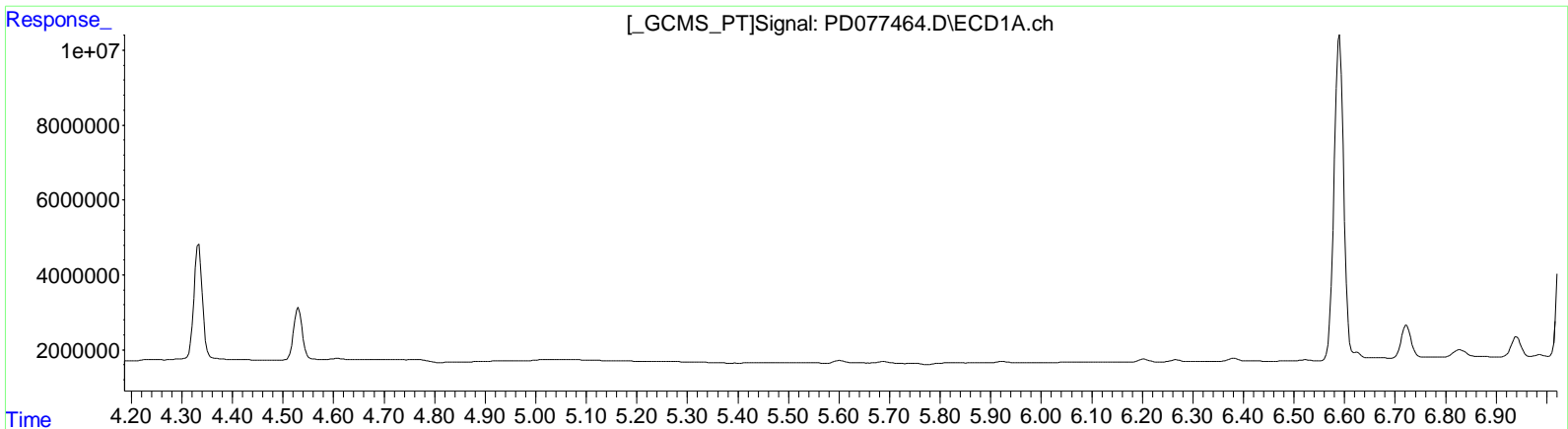
**Instrument :**  
 ECD\_D  
**LabSampleID :**  
 PEM149

**Manual Integrations APPROVED**

Reviewed By : Abdul Mirza 08/31/2023  
 Supervised By : Ankita Jodhani 08/31/2023

Integration File signal 1: autoint1.e  
 Integration File signal 2: autoint2.e  
 Quant Time: Aug 30 21:23:33 2023  
 Quant Method : Z:\pestpcbsrv\HPCHEM1\ECD\_D\Method\PD081423CLP.M  
 Quant Title : GC Extractables  
 QLast Update : Tue Aug 15 01:53:32 2023  
 Response via : Initial Calibration  
 Integrator: ChemStation

Volume Inj. : 1 µl  
 Signal #1 Phase : ZB-MR1 Signal #2 Phase: ZB-MR2  
 Signal #1 Info : 30M x 0.32mm x 0.5 Signal #2 Info : 30M x 0.32mm x 0.25µm



QEdit

(12) 4,4'-DDE (B)	0.000min	0.000 ng/ml	response 0
(12) 4,4'-DDE #2 (B)	5.218min	0.590 ng/ml	response 803178

Data Path : Z:\pestpcbsrv\HPCHEM1\ECD\_D\Data\PD083123\  
 Data File : PD077464.D  
 Signal(s) : Signal #1: ECD1A.ch Signal #2: ECD2B.ch  
 Acq On : 30 Aug 2023 08:33  
 Operator : ARVAJ  
 Sample : PEM149  
 Misc :  
 ALS Vial : 3 Sample Multiplier: 1

**Instrument :**

ECD\_D

**Lab Sample ID :**

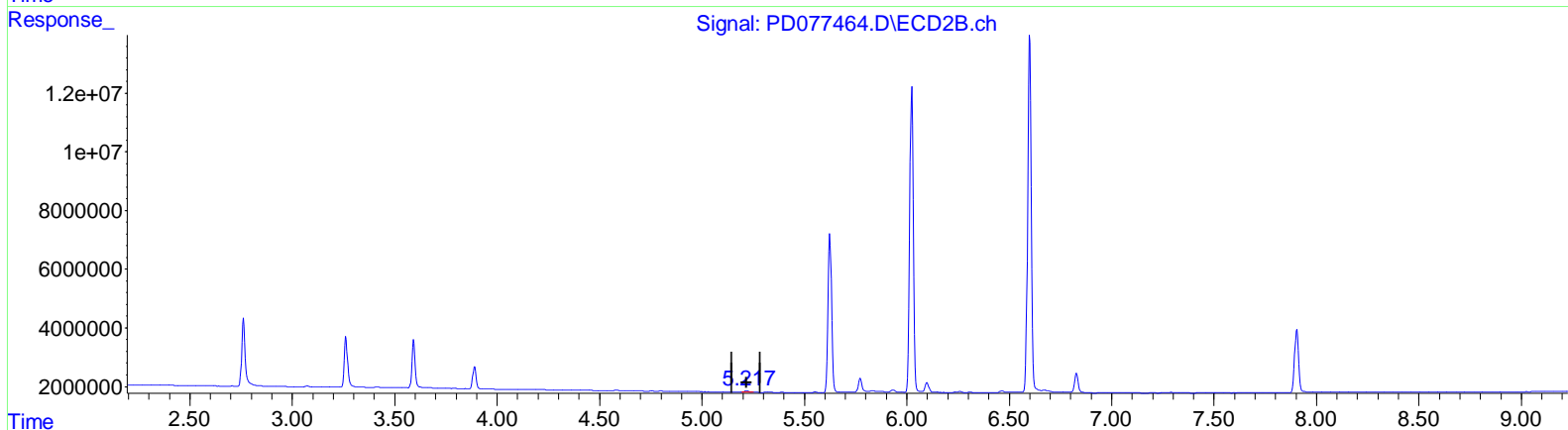
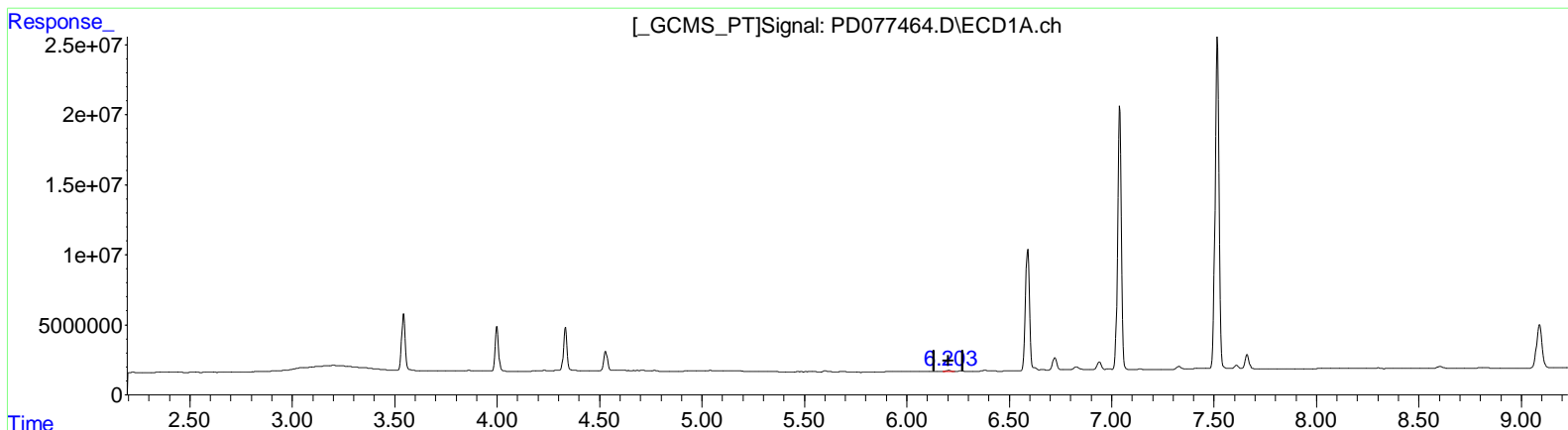
PEM149

**Manual Integrations APPROVED**

Reviewed By : Abdul Mirza 08/31/2023  
 Supervised By : Ankita Jodhani 08/31/2023

Integration File signal 1: autoint1.e  
 Integration File signal 2: autoint2.e  
 Quant Time: Aug 30 21:23:33 2023  
 Quant Method : Z:\pestpcbsrv\HPCHEM1\ECD\_D\Method\PD081423CLP.M  
 Quant Title : GC Extractables  
 QLast Update : Tue Aug 15 01:53:32 2023  
 Response via : Initial Calibration  
 Integrator: ChemStation

Volume Inj. : 1 µl  
 Signal #1 Phase : ZB-MR1 Signal #2 Phase: ZB-MR2  
 Signal #1 Info : 30M x 0.32mm x 0.5 Signal #2 Info : 30M x 0.32mm x 0.25µm



QEdit

(12) 4,4'-DDE (B)  
 6.203min 0.382 ng/ml m  
 response 1095472

(12) 4,4'-DDE #2 (B)  
 5.217min 0.471 ng/ml m  
 response 641595