

Data Path : Z:\pestpcbsrv\HPCHEM1\ECD\_D\Data\PD090121\  
 Data File : PD065492.D  
 Signal(s) : Signal #1: ECD1A.ch Signal #2: ECD2B.ch  
 Acq On : 31 Aug 2021 11:02  
 Operator : AR\AJ  
 Sample : M3263-03  
 Misc : PEST MDL 1 PPB  
 ALS Vial : 9 Sample Multiplier: 1

**Instrument :**  
 ECD\_D  
**ClientSampled :**  
 MDL-SOIL-QT4-2021-07

**Manual Integrations**  
**APPROVED**  
 mohammad  
 9/8/2021 2:38:17 PM

Integration File signal 1: autoint1.e  
 Integration File signal 2: autoint2.e  
 Quant Time: Sep 01 08:11:23 2021  
 Quant Method : Z:\pestpcbsrv\HPCHEM1\ECD\_D\Method\PD082921CLP.M  
 Quant Title : GC Extractables  
 QLast Update : Sat Aug 28 03:49:37 2021  
 Response via : Initial Calibration  
 Integrator: ChemStation

Volume Inj. : 1 µl  
 Signal #1 Phase : ZB-MR2 Signal #2 Phase: ZB-MR1  
 Signal #1 Info : 30M x 0.32mm x0.2 Signal #2 Info : 30M x 0.32mm x 0.50µm

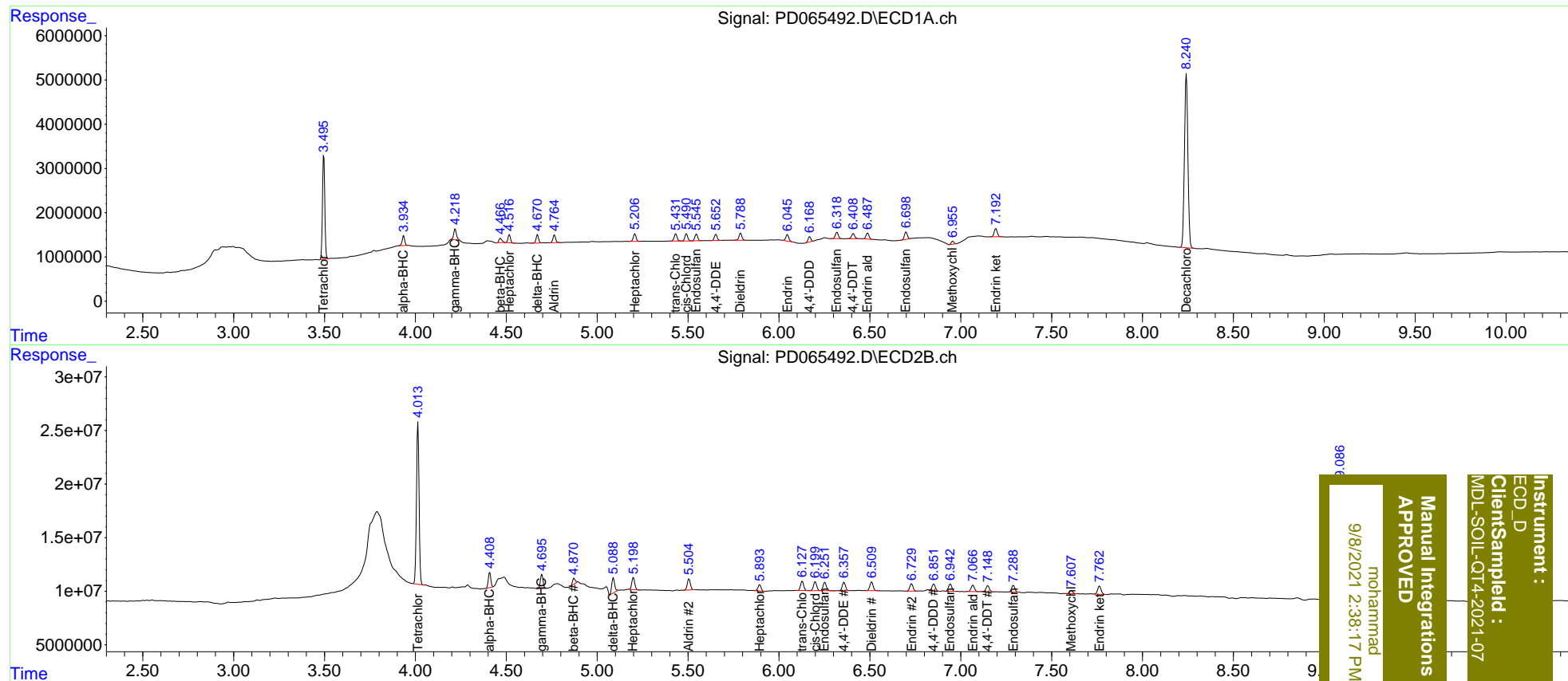
Compound	RT#1	RT#2	Resp#1	Resp#2	ng/ml	ng/ml
-----						
System Monitoring Compounds						
1) SA Tetrachlo...	3.496	4.014	20948056	149.1E6	18.530	18.405
27) SA Decachlor...	8.241	9.087	51637331	191.4E6	35.744	37.020
Target Compounds						
2) A alpha-BHC	3.936	4.409	2173573	13560822	1.412	1.241
3) MA gamma-BHC...	4.218	4.696	2627851	13255338	1.606m	1.260
4) MA Heptachlor	4.517	5.200	1643747	12689522	1.121	1.261
5) MB Aldrin	4.765	5.505	1776333	12120404	1.258	1.267
6) B beta-BHC	4.468	4.873	1074669	6278240	1.457	1.308
7) B delta-BHC	4.672	5.089	1832736	16415244	1.220	1.593 #
8) B Heptachlo...	5.208	5.894	1847861	6900080	1.370	0.846 #
9) A Endosulfan I	5.546	6.253	1688819	9758056	1.325	1.316
10) B trans-Chl...	5.431	6.128	1768150	10384662	1.291m	1.280
11) B cis-Chlor...	5.491	6.200	1774788	10219240	1.305	1.289
12) B 4,4'-DDE	5.654	6.358	1493873	9551732	1.194	1.291
13) MA Dieldrin	5.789	6.510	1827122	10300094	1.365	1.346
14) MA Endrin	6.047	6.730	1667535	8478549	1.369	1.338
15) B Endosulfa...	6.319	6.943	1635415	8856689	1.298	1.366
16) A 4,4'-DDD	6.168	6.851	1288840	9081243	1.174m	1.509m#
17) MA 4,4'-DDT	6.409	7.149	1381187	7649814	1.151	1.254
18) B Endrin al...	6.488	7.068	1516165	7735168	1.512	1.512
19) B Endosulfa...	6.699	7.290	1888479	7693697	1.476	1.238
20) A Methoxychlor	6.955	7.608	719064	3673759	1.100m	1.259
21) B Endrin ke...	7.194	7.764	2193713	10515548	1.412	1.480

(f)=RT Delta > 1/2 Window (#)=Amounts differ by > 25% (m)=manual int.

Data Path : Z:\pestpcbsrv\HPCHEM1\ECD\_D\Data\PD090121\  
 Data File : PD065492.D  
 Signal(s) : Signal #1: ECD1A.ch Signal #2: ECD2B.ch  
 Acq On : 31 Aug 2021 11:02  
 Operator : AR\AJ  
 Sample : M3263-03  
 Misc : PEST MDL 1 PPB  
 ALS Vial : 9 Sample Multiplier: 1

Integration File signal 1: autoint1.e  
 Integration File signal 2: autoint2.e  
 Quant Time: Sep 01 08:11:23 2021  
 Quant Method : Z:\pestpcbsrv\HPCHEM1\ECD\_D\Method\PD082921CLP.M  
 Quant Title : GC Extractables  
 QLast Update : Sat Aug 28 03:49:37 2021  
 Response via : Initial Calibration  
 Integrator: ChemStation

Volume Inj. : 1 µl  
 Signal #1 Phase : ZB-MR2 Signal #2 Phase: ZB-MR1  
 Signal #1 Info : 30M x 0.32mm x0.2 Signal #2 Info : 30M x 0.32mm x 0.50µm



Instrument :  
 ECD\_D  
 Client Sample Id :  
 MDL-SOIL-QT4-2021-07

980.6

Manual Integrations  
 APPROVED  
 mohammad  
 9/8/2021 2:38:17 PM