

Data Path : Z:\pestpcbsrv\HPCHEM1\ECD_D\Data\PD090121\
 Data File : PD065508.D
 Signal(s) : Signal #1: ECD1A.ch Signal #2: ECD2B.ch
 Acq On : 31 Aug 2021 17:03
 Operator : AR\AJ
 Sample : PIBLK84
 Misc :
 ALS Vial : 2 Sample Multiplier: 1

Instrument :
 ECD_D
 ClientSampleId :
 PIBLK084

Integration File signal 1: autoint1.e
 Integration File signal 2: autoint2.e
 Quant Time: Sep 01 08:17:24 2021
 Quant Method : Z:\pestpcbsrv\HPCHEM1\ECD_D\Method\PD082921CLP.M
 Quant Title : GC Extractables
 QLast Update : Sat Aug 28 03:49:37 2021
 Response via : Initial Calibration
 Integrator: ChemStation

Volume Inj. : 1 µl
 Signal #1 Phase : ZB-MR2 Signal #2 Phase: ZB-MR1
 Signal #1 Info : 30M x 0.32mm x0.2 Signal #2 Info : 30M x 0.32mm x 0.50µm

Compound	RT#1	RT#2	Resp#1	Resp#2	ng/ml	ng/ml

System Monitoring Compounds						
1) SA Tetrachlo...	3.496	4.015	22217664	158.1E6	19.653	19.515
27) SA Decachlor...	8.242	9.088	54956435	204.1E6	38.042	39.469

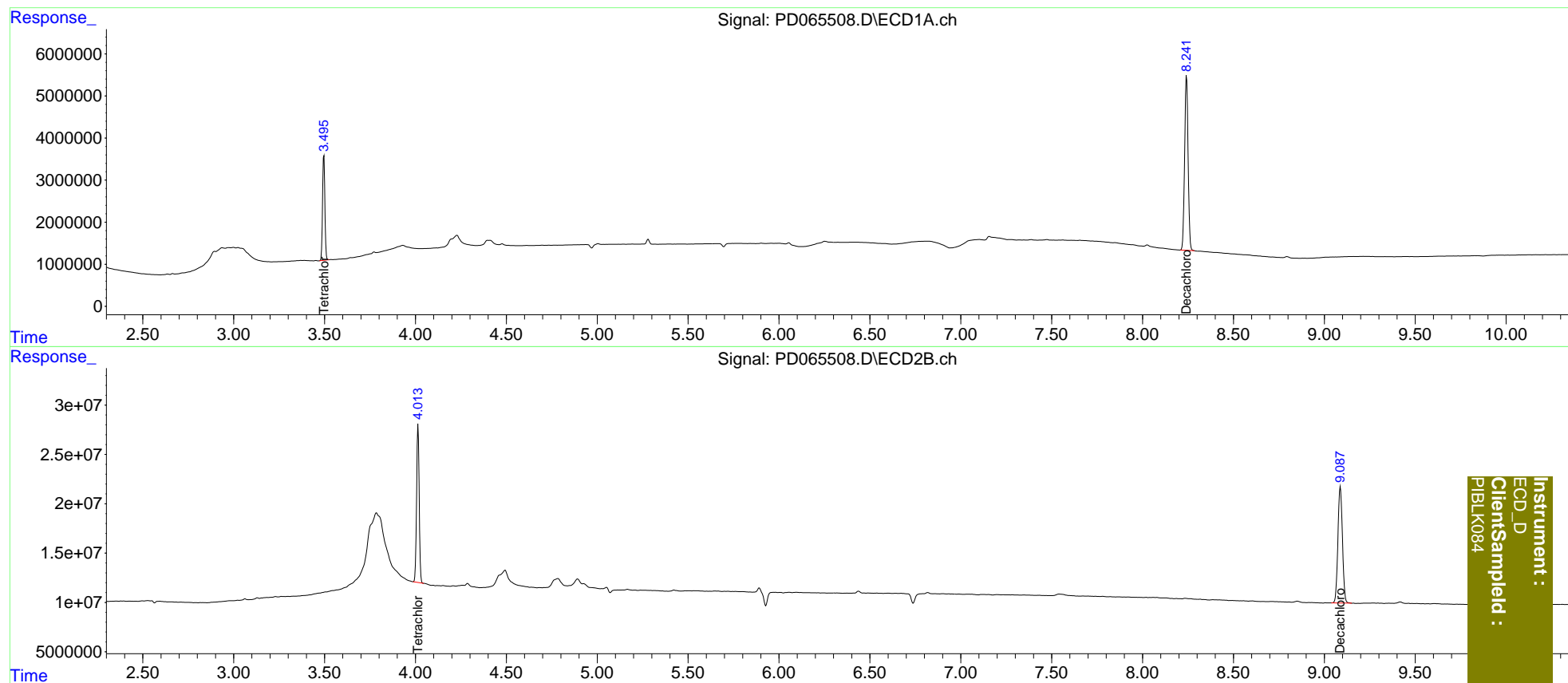
Target Compounds

(f)=RT Delta > 1/2 Window (#)=Amounts differ by > 25% (m)=manual int.

Data Path : Z:\pestpcbsrv\HPCHEM1\ECD_D\Data\PD090121\
 Data File : PD065508.D
 Signal(s) : Signal #1: ECD1A.ch Signal #2: ECD2B.ch
 Acq On : 31 Aug 2021 17:03
 Operator : AR\AJ
 Sample : PIBLK84
 Misc :
 ALS Vial : 2 Sample Multiplier: 1

Integration File signal 1: autoint1.e
 Integration File signal 2: autoint2.e
 Quant Time: Sep 01 08:17:24 2021
 Quant Method : Z:\pestpcbsrv\HPCHEM1\ECD_D\Method\PD082921CLP.M
 Quant Title : GC Extractables
 QLast Update : Sat Aug 28 03:49:37 2021
 Response via : Initial Calibration
 Integrator: ChemStation

Volume Inj. : 1 µl
 Signal #1 Phase : ZB-MR2 Signal #2 Phase: ZB-MR1
 Signal #1 Info : 30M x 0.32mm x0.2 Signal #2 Info : 30M x 0.32mm x 0.50µm



Instrument :
 ECD_D
 ClientSampleId :
 PIBLK084