

Data Path : Z:\pestpcbsrv\HPCHEM1\ECD\_D\Data\PD090124\  
 Data File : PD084850.D  
 Signal(s) : Signal #1: ECD1A.ch Signal #2: ECD2B.ch  
 Acq On : 30 Aug 2024 13:05  
 Operator : AR\AJ  
 Sample : P3722-03MSD  
 Misc :  
 ALS Vial : 8 Sample Multiplier: 1

**Instrument :**  
 ECD\_D  
**ClientSampleId :**  
 DCYD5MSD

**Manual Integrations**  
**APPROVED**  
 Reviewed By :Abdul Mirza 09/03/2024  
 Supervised By :Ankita Jodhani 09/03/2024

Integration File signal 1: autoint1.e  
 Integration File signal 2: autoint2.e  
 Quant Time: Aug 31 00:20:03 2024  
 Quant Method : Z:\pestpcbsrv\HPCHEM1\ECD\_D\Method\PD082524CLP.M  
 Quant Title : GC Extractables  
 QLast Update : Tue Aug 27 02:47:48 2024  
 Response via : Initial Calibration  
 Integrator: ChemStation

Volume Inj. : 1 µl  
 Signal #1 Phase : ZB-MR1 Signal #2 Phase: ZB-MR2  
 Signal #1 Info : 30M x 0.32mm x0.5 Signal #2 Info : 30M x 0.32mm x 0.25µm

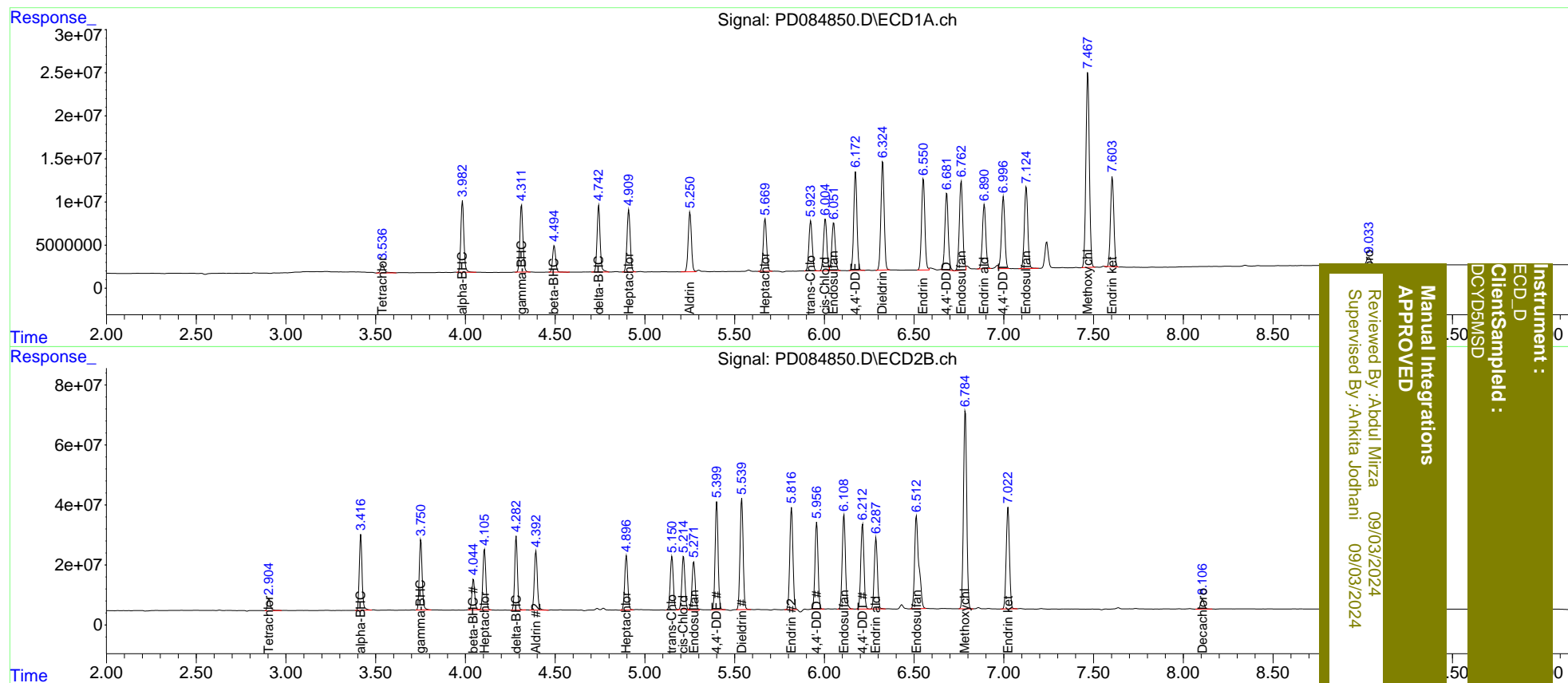
Compound	RT#1	RT#2	Resp#1	Resp#2	ng/ml	ng/ml
System Monitoring Compounds						
1) SA Tetrachlo...	3.538	2.906	14668424	47141433	14.503	13.321
27) SA Decachlor...	9.034	8.107	15060237	44653657	11.531	12.842
Target Compounds						
2) A alpha-BHC	3.984	3.417	95869252	269.1E6	56.388	53.074
3) MA gamma-BHC...	4.313	3.752	91555453	255.9E6	56.591	52.805
4) MA Heptachlor	4.910	4.106	89998727	230.8E6	58.494	54.218
5) MB Aldrin	5.251	4.393	85792339	232.2E6	53.642	52.288
6) B beta-BHC	4.495	4.044	36464853	110.1E6	50.201	50.789m
7) B delta-BHC	4.743	4.283	91872877	260.2E6	56.020	52.410
8) B Heptachlo...	5.670	4.897	77190182	213.4E6	51.755	50.379
9) A Endosulfan I	6.051	5.271	72570920	203.3E6	52.748m	53.046m
10) B trans-Chl...	5.924	5.150	75095736	215.7E6	53.245	52.443m
11) B cis-Chlor...	6.004	5.215	77165114	211.1E6	52.189m	50.313
12) B 4,4'-DDE	6.174	5.401	143.2E6	411.3E6	114.818	104.850
13) MA Dieldrin	6.325	5.540	160.3E6	441.1E6	108.667	102.669
14) MA Endrin	6.552	5.816	136.2E6	415.0E6	120.740	112.099m
15) B Endosulfa...	6.762	6.108	138.9E6	394.1E6	105.257m	106.282m
16) A 4,4'-DDD	6.682	5.957	115.3E6	343.6E6	116.780	101.252
17) MA 4,4'-DDT	6.996	6.213	109.2E6	348.8E6	122.039m	109.026
18) B Endrin al...	6.891	6.288	97857008	288.2E6	108.356	100.942
19) B Endosulfa...	7.125	6.512	126.8E6	501.8E6	110.034	140.505m#
20) A Methoxychlor	7.468	6.785	304.0E6	831.6E6	583.521	502.689
21) B Endrin ke...	7.605	7.023	134.3E6	428.0E6	109.859	97.203

(f)=RT Delta > 1/2 Window (#)=Amounts differ by > 25% (m)=manual int.

Data Path : Z:\pestpcbsrv\HPCHEM1\ECD\_D\Data\PD090124\  
 Data File : PD084850.D  
 Signal(s) : Signal #1: ECD1A.ch Signal #2: ECD2B.ch  
 Acq On : 30 Aug 2024 13:05  
 Operator : AR\AJ  
 Sample : P3722-03MSD  
 Misc :  
 ALS Vial : 8 Sample Multiplier: 1

Integration File signal 1: autoint1.e  
 Integration File signal 2: autoint2.e  
 Quant Time: Aug 31 00:20:03 2024  
 Quant Method : Z:\pestpcbsrv\HPCHEM1\ECD\_D\Method\PD082524CLP.M  
 Quant Title : GC Extractables  
 QLast Update : Tue Aug 27 02:47:48 2024  
 Response via : Initial Calibration  
 Integrator: ChemStation

Volume Inj. : 1 µl  
 Signal #1 Phase : ZB-MR1 Signal #2 Phase: ZB-MR2  
 Signal #1 Info : 30M x 0.32mm x0.5 Signal #2 Info : 30M x 0.32mm x 0.25µm



Instrument : ECD\_D  
 Client Sampled : DCYD5MSD  
 Reviewed By : Aboul Mirza 09/03/2024  
 Supervised By : Ankita Jodhani 09/03/2024  
 Manual Integrations APPROVED