

Data Path : Z:\pestpcbsrv\HPCHEM1\ECD_D\Data\PD090324\
 Data File : PD084864.D
 Signal(s) : Signal #1: ECD1A.ch Signal #2: ECD2B.ch
 Acq On : 03 Sep 2024 12:41
 Operator : AR\AJ
 Sample : P3673-22MSD
 Misc :
 ALS Vial : 11 Sample Multiplier: 1

Instrument :

ECD_D

ClientSampleId :

DCXZ4MSD

Manual Integrations

APPROVED

Reviewed By :Abdul Mirza 09/04/2024
 Supervised By :Ankita Jodhani 09/04/2024

Integration File signal 1: autoint1.e
 Integration File signal 2: autoint2.e
 Quant Time: Sep 04 01:10:02 2024
 Quant Method : Z:\pestpcbsrv\HPCHEM1\ECD_D\Method\PD082524CLP.M
 Quant Title : GC Extractables
 QLast Update : Tue Aug 27 02:47:48 2024
 Response via : Initial Calibration
 Integrator: ChemStation

Volume Inj. : 1 µl
 Signal #1 Phase : ZB-MR2 Signal #2 Phase: ZB-MR2
 Signal #1 Info : 30M x 0.32mm x0.5 Signal #2 Info : 30M x 0.32mm x 0.25µm

Compound	RT#1	RT#2	Resp#1	Resp#2	ng/ml	ng/ml

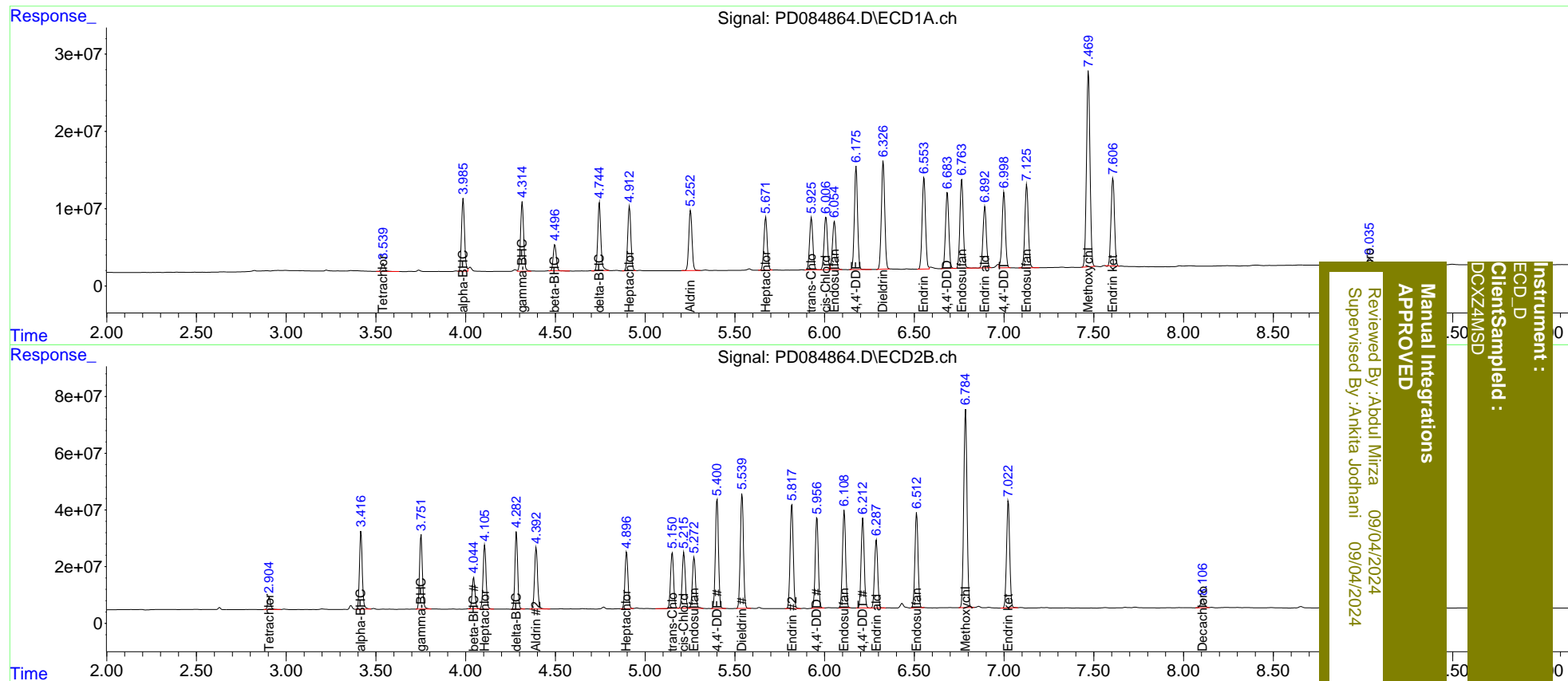
System Monitoring Compounds						
1) SA Tetrachlo...	3.541	2.906	13430129	48360985	13.279	13.666
2) SA Decachlor...	9.037	8.107	14291552	42496012	10.943	12.221
Target Compounds						
2) A alpha-BHC	3.985	3.417	109.1E6	298.7E6	64.199m	58.905
3) MA gamma-BHC...	4.314	3.752	106.5E6	284.1E6	65.849m	58.632
4) MA Heptachlor	4.913	4.105	102.5E6	260.1E6	66.613	61.098m
5) MB Aldrin	5.253	4.393	97619122	254.4E6	61.036	57.282
6) B beta-BHC	4.498	4.044	40314075	122.0E6	55.501	56.261m
7) B delta-BHC	4.746	4.283	105.0E6	287.9E6	64.033	57.998
8) B Heptachlo...	5.672	4.897	87226575	233.3E6	58.484	55.079
9) A Endosulfan I	6.054	5.272	82198816	221.8E6	59.746m	57.852m
10) B trans-Chl...	5.927	5.152	85501023	234.2E6	60.623	56.930
11) B cis-Chlor...	6.006	5.216	88220875	235.1E6	59.667m	56.032
12) B 4,4'-DDE	6.176	5.401	164.7E6	460.3E6	132.048	117.334
13) MA Dieldrin	6.327	5.540	181.8E6	485.7E6	123.228	113.066
14) MA Endrin	6.553	5.818	156.2E6	450.1E6	138.442m	121.583
15) B Endosulfa...	6.765	6.110	149.6E6	419.4E6	113.306	113.105
16) A 4,4'-DDD	6.684	5.958	126.9E6	383.3E6	128.479	112.956
17) MA 4,4'-DDT	6.998	6.213	125.5E6	379.2E6	140.208m	118.532
18) B Endrin al...	6.893	6.288	103.4E6	294.7E6	114.540	103.213
19) B Endosulfa...	7.127	6.513	142.8E6	404.7E6	123.983	113.309
20) A Methoxychlor	7.470	6.786	342.5E6	890.3E6	657.491	538.200
21) B Endrin ke...	7.607	7.024	150.6E6	462.0E6	123.172	104.922

(f)=RT Delta > 1/2 Window (#)=Amounts differ by > 25% (m)=manual int.

Data Path : Z:\pestpcbsrv\HPCHEM1\ECD_D\Data\PD090324\
 Data File : PD084864.D
 Signal(s) : Signal #1: ECD1A.ch Signal #2: ECD2B.ch
 Acq On : 03 Sep 2024 12:41
 Operator : AR\AJ
 Sample : P3673-22MSD
 Misc :
 ALS Vial : 11 Sample Multiplier: 1

Integration File signal 1: autoint1.e
 Integration File signal 2: autoint2.e
 Quant Time: Sep 04 01:10:02 2024
 Quant Method : Z:\pestpcbsrv\HPCHEM1\ECD_D\Method\PD082524CLP.M
 Quant Title : GC Extractables
 QLast Update : Tue Aug 27 02:47:48 2024
 Response via : Initial Calibration
 Integrator: ChemStation

Volume Inj. : 1 µl
 Signal #1 Phase : ZB-MR1 Signal #2 Phase: ZB-MR2
 Signal #1 Info : 30M x 0.32mm x0.5 Signal #2 Info : 30M x 0.32mm x 0.25µm



Instrument : ECD_D
 Client/Sampled : DCXZ4MSD
 Manual Integrations APPROVED
 Reviewed By : Aboul Mirza 09/04/2024
 Supervised By : Ankita Jodhani 09/04/2024