

Data Path : Z:\pestpcbsrv\HPCHEM1\ECD\_D\Data\PD090523\  
 Data File : PD077665.D  
 Signal(s) : Signal #1: ECD1A.ch Signal #2: ECD2B.ch  
 Acq On : 05 Sep 2023 21:16  
 Operator : AR\AJ  
 Sample : PB155312BL  
 Misc :  
 ALS Vial : 30 Sample Multiplier: 1

Instrument :  
 ECD\_D  
 ClientSampleId :

Integration File signal 1: autoint1.e  
 Integration File signal 2: autoint2.e  
 Quant Time: Sep 05 22:45:40 2023  
 Quant Method : Z:\pestpcbsrv\HPCHEM1\ECD\_D\Method\PD081423CLP.M  
 Quant Title : GC Extractables  
 QLast Update : Tue Aug 15 01:53:32 2023  
 Response via : Initial Calibration  
 Integrator: ChemStation

Volume Inj. : 1 µl  
 Signal #1 Phase : ZB-MR1 Signal #2 Phase: ZB-MR2  
 Signal #1 Info : 30M x 0.32mm x0.5 Signal #2 Info : 30M x 0.32mm x 0.25µm

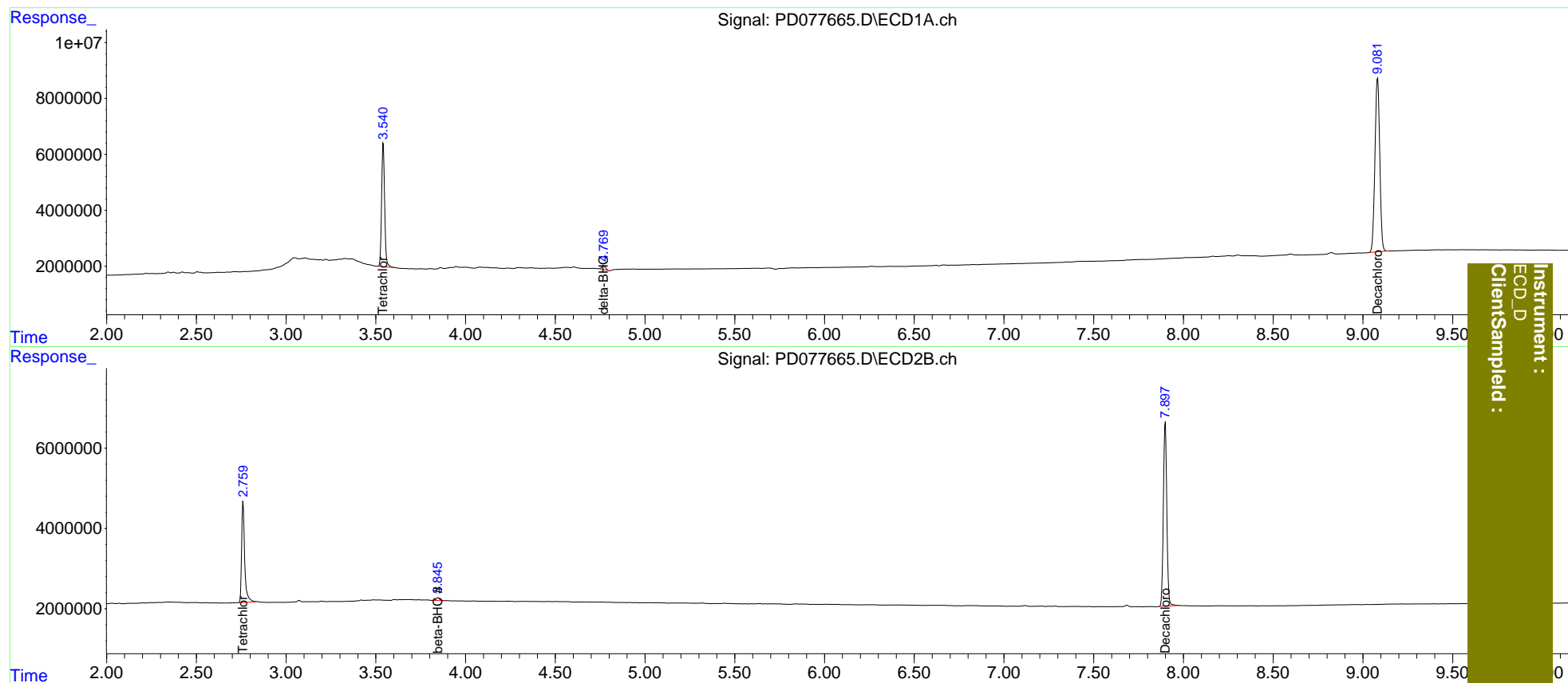
Compound	RT#1	RT#2	Resp#1	Resp#2	ng/ml	ng/ml
System Monitoring Compounds						
1) SA Tetrachlo...	3.542	2.761	51887780	29595696	23.635	23.757
2) SA Decachlor...	9.082	7.899	115.6E6	61158549	45.446	49.063
Target Compounds						
3) MA gamma-BHC...	0.000	3.604	0	100384	N.D.	<MDL
6) B beta-BHC	0.000	3.846f	0	904286	N.D.	1.108
7) B delta-BHC	4.769	0.000	2095851	0	0.632	N.D. #

(f)=RT Delta > 1/2 Window (#)=Amounts differ by > 25% (m)=manual int.

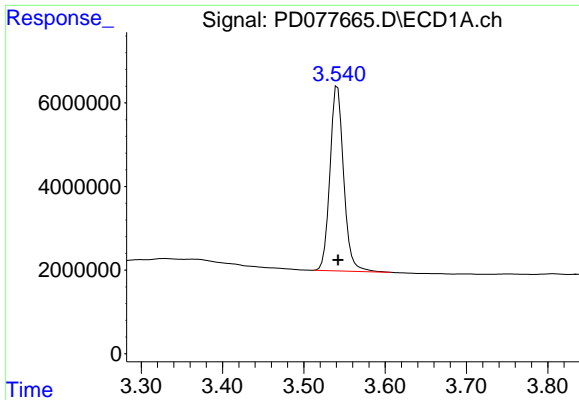
Data Path : Z:\pestpcbsrv\HPCHEM1\ECD\_D\Data\PD090523\  
 Data File : PD077665.D  
 Signal(s) : Signal #1: ECD1A.ch Signal #2: ECD2B.ch  
 Acq On : 05 Sep 2023 21:16  
 Operator : AR\AJ  
 Sample : PB155312BL  
 Misc :  
 ALS Vial : 30 Sample Multiplier: 1

Integration File signal 1: autoint1.e  
 Integration File signal 2: autoint2.e  
 Quant Time: Sep 05 22:45:40 2023  
 Quant Method : Z:\pestpcbsrv\HPCHEM1\ECD\_D\Method\PD081423CLP.M  
 Quant Title : GC Extractables  
 QLast Update : Tue Aug 15 01:53:32 2023  
 Response via : Initial Calibration  
 Integrator: ChemStation

Volume Inj. : 1 µl  
 Signal #1 Phase : ZB-MR1 Signal #2 Phase: ZB-MR2  
 Signal #1 Info : 30M x 0.32mm x0.5 Signal #2 Info : 30M x 0.32mm x 0.25µm



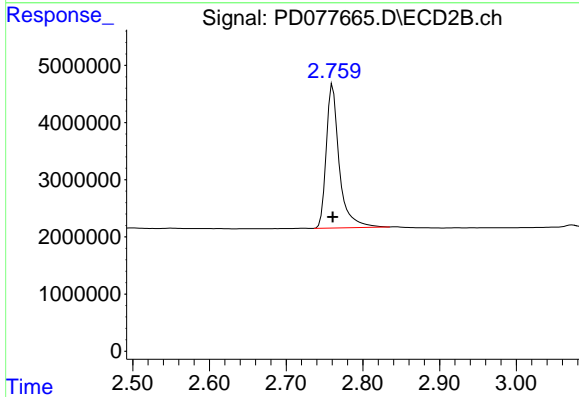
Instrument : ECD\_D  
 ClientSampled :



#1 Tetrachloro-m-xylene

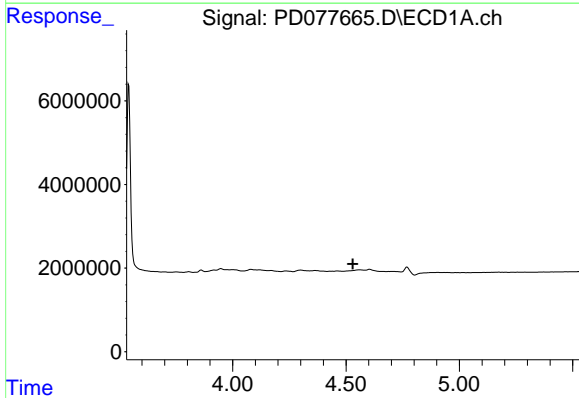
R.T.: 3.542 min  
 Delta R.T.: 0.000 min  
 Response: 51887780  
 Conc: 23.63 ng/ml

Instrument :  
 ECD\_D  
 ClientSampleId :



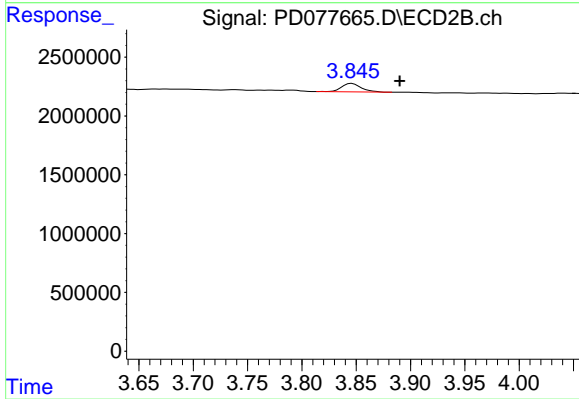
#1 Tetrachloro-m-xylene

R.T.: 2.761 min  
 Delta R.T.: 0.000 min  
 Response: 29595696  
 Conc: 23.76 ng/ml



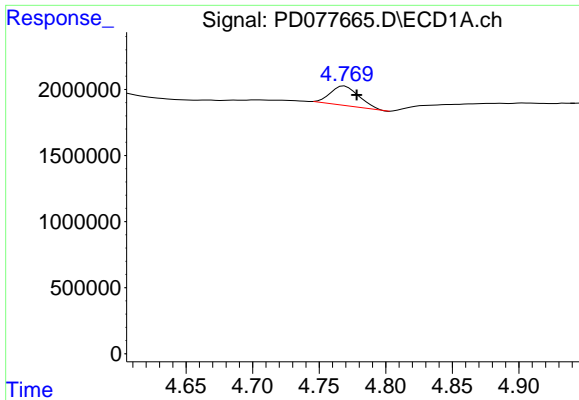
#6 beta-BHC

R.T.: 0.000 min  
 Exp R.T. : 4.530 min  
 Response: 0  
 Conc: N.D.



#6 beta-BHC

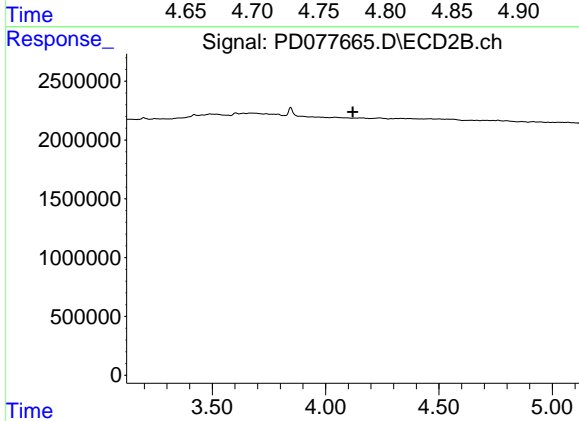
R.T.: 3.846 min  
 Delta R.T.: -0.044 min  
 Response: 904286  
 Conc: 1.11 ng/ml



#7 delta-BHC

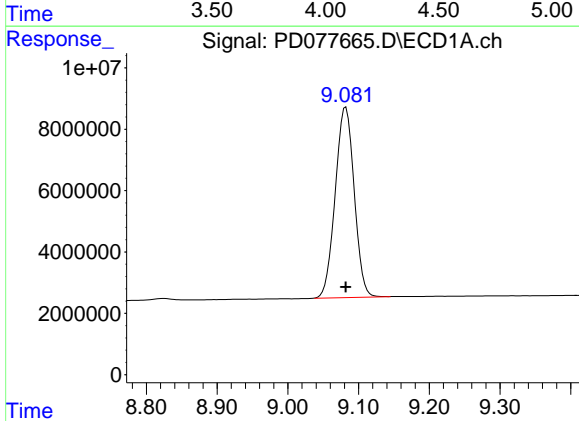
R.T.: 4.769 min  
 Delta R.T.: -0.009 min  
 Response: 2095851  
 Conc: 0.63 ng/ml

Instrument :  
 ECD\_D  
 ClientSampleId :



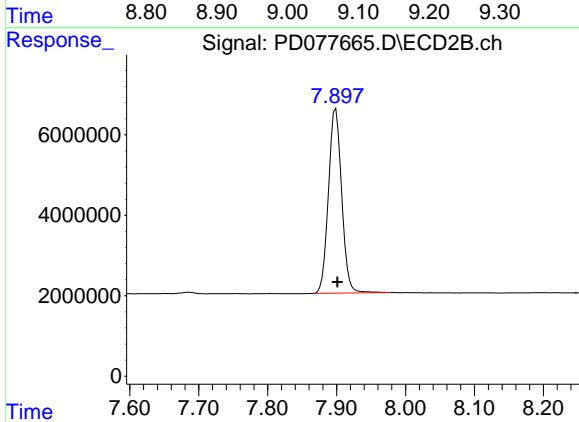
#7 delta-BHC

R.T.: 0.000 min  
 Exp R.T. : 4.119 min  
 Response: 0  
 Conc: N.D.



#27 Decachlorobiphenyl

R.T.: 9.082 min  
 Delta R.T.: 0.000 min  
 Response: 115643154  
 Conc: 45.45 ng/ml



#27 Decachlorobiphenyl

R.T.: 7.899 min  
 Delta R.T.: -0.003 min  
 Response: 61158549  
 Conc: 49.06 ng/ml