

Data Path : Z:\pestpcbsrv\HPCHEM1\ECD_D\Data\PD090523\
 Data File : PD077643.D
 Signal(s) : Signal #1: ECD1A.ch Signal #2: ECD2B.ch
 Acq On : 05 Sep 2023 15:22
 Operator : AR\AJ
 Sample : 04247-03
 Misc :
 ALS Vial : 11 Sample Multiplier: 1

Instrument :
 ECD_D
 ClientSampleId :
 BBK19

Integration File signal 1: autoint1.e
 Integration File signal 2: autoint2.e
 Quant Time: Sep 05 22:36:53 2023
 Quant Method : Z:\pestpcbsrv\HPCHEM1\ECD_D\Method\PD081423CLP.M
 Quant Title : GC Extractables
 QLast Update : Tue Aug 15 01:53:32 2023
 Response via : Initial Calibration
 Integrator: ChemStation

Volume Inj. : 1 µl
 Signal #1 Phase : ZB-MR1 Signal #2 Phase: ZB-MR2
 Signal #1 Info : 30M x 0.32mm x0.5 Signal #2 Info : 30M x 0.32mm x 0.25µm

Compound	RT#1	RT#2	Resp#1	Resp#2	ng/ml	ng/ml

System Monitoring Compounds						
1) SA Tetrachlo...	3.543	2.762	50349647	29981260	22.934	24.067
27) SA Decachlor...	9.083	7.900	65054832	33198525	25.566	26.633

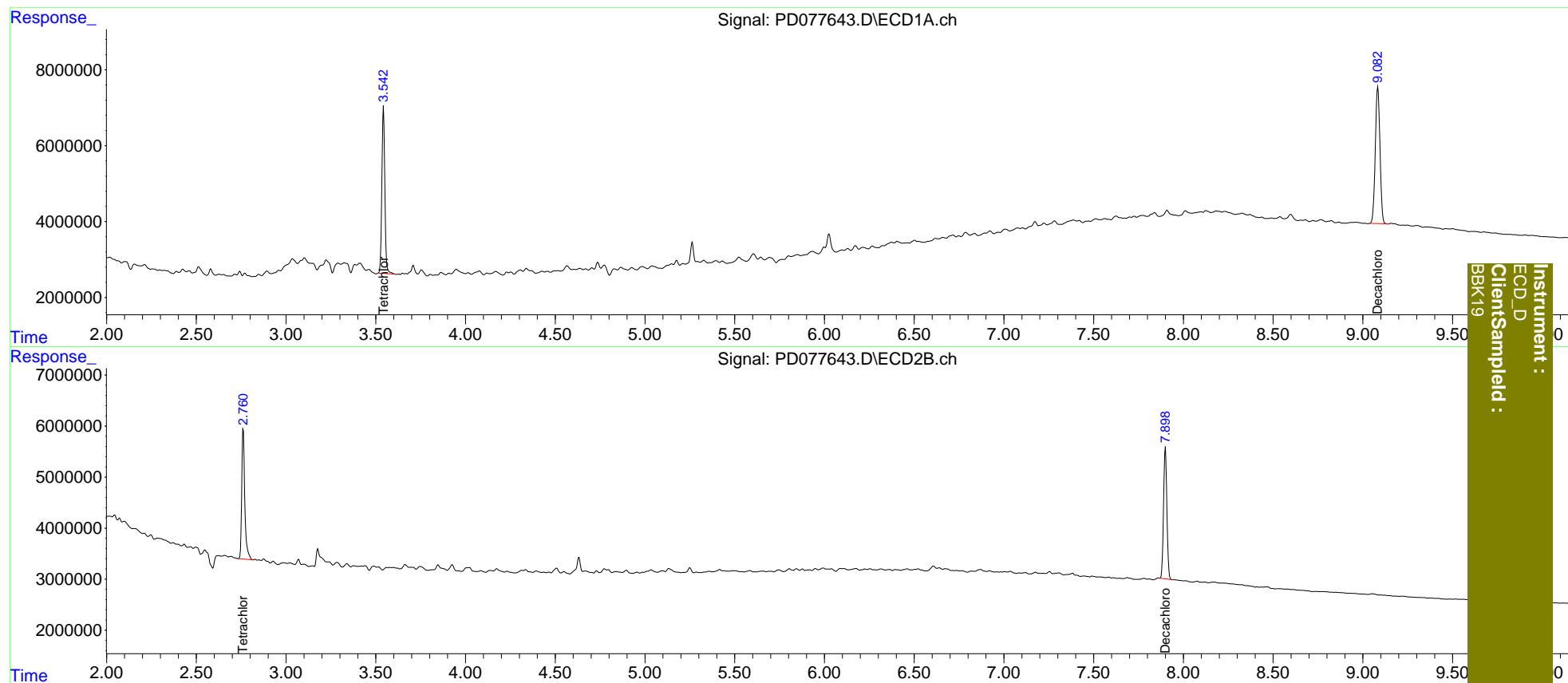
Target Compounds

 (f)=RT Delta > 1/2 Window (#)=Amounts differ by > 25% (m)=manual int.

Data Path : Z:\pestpcbsrv\HPCHEM1\ECD_D\Data\PD090523\
Data File : PD077643.D
Signal(s) : Signal #1: ECD1A.ch Signal #2: ECD2B.ch
Acq On : 05 Sep 2023 15:22
Operator : AR\AJ
Sample : 04247-03
Misc :
ALS Vial : 11 Sample Multiplier: 1

Integration File signal 1: autoint1.e
Integration File signal 2: autoint2.e
Quant Time: Sep 05 22:36:53 2023
Quant Method : Z:\pestpcbsrv\HPCHEM1\ECD_D\Method\PD081423CLP.M
Quant Title : GC Extractables
QLast Update : Tue Aug 15 01:53:32 2023
Response via : Initial Calibration
Integrator: ChemStation

Volume Inj. : 1 µl
Signal #1 Phase : ZB-MR1 Signal #2 Phase: ZB-MR2
Signal #1 Info : 30M x 0.32mm x 0.5 Signal #2 Info : 30M x 0.32mm x 0.25µm



Instrument :
ECD_D
ClientSampled :
BK19