

Data Path : Z:\pestpcbsrv\HPCHEM1\ECD\_D\Data\PD090523\  
 Data File : PD077662.D  
 Signal(s) : Signal #1: ECD1A.ch Signal #2: ECD2B.ch  
 Acq On : 05 Sep 2023 20:36  
 Operator : AR\AJ  
 Sample : 04247-19  
 Misc :  
 ALS Vial : 29 Sample Multiplier: 1

Instrument :  
 ECD\_D  
 ClientSampleId :  
 BBHX8

Integration File signal 1: autoint1.e  
 Integration File signal 2: autoint2.e  
 Quant Time: Sep 05 22:44:15 2023  
 Quant Method : Z:\pestpcbsrv\HPCHEM1\ECD\_D\Method\PD081423CLP.M  
 Quant Title : GC Extractables  
 QLast Update : Tue Aug 15 01:53:32 2023  
 Response via : Initial Calibration  
 Integrator: ChemStation

Volume Inj. : 1 µl  
 Signal #1 Phase : ZB-MR1 Signal #2 Phase: ZB-MR2  
 Signal #1 Info : 30M x 0.32mm x0.5 Signal #2 Info : 30M x 0.32mm x 0.25µm

Compound	RT#1	RT#2	Resp#1	Resp#2	ng/ml	ng/ml
-----						
System Monitoring Compounds						
1) SA Tetrachlo...	3.542	2.761	53828235	31051124	24.519	24.926
27) SA Decachlor...	9.082	7.900	68103366	34064812	26.764	27.328

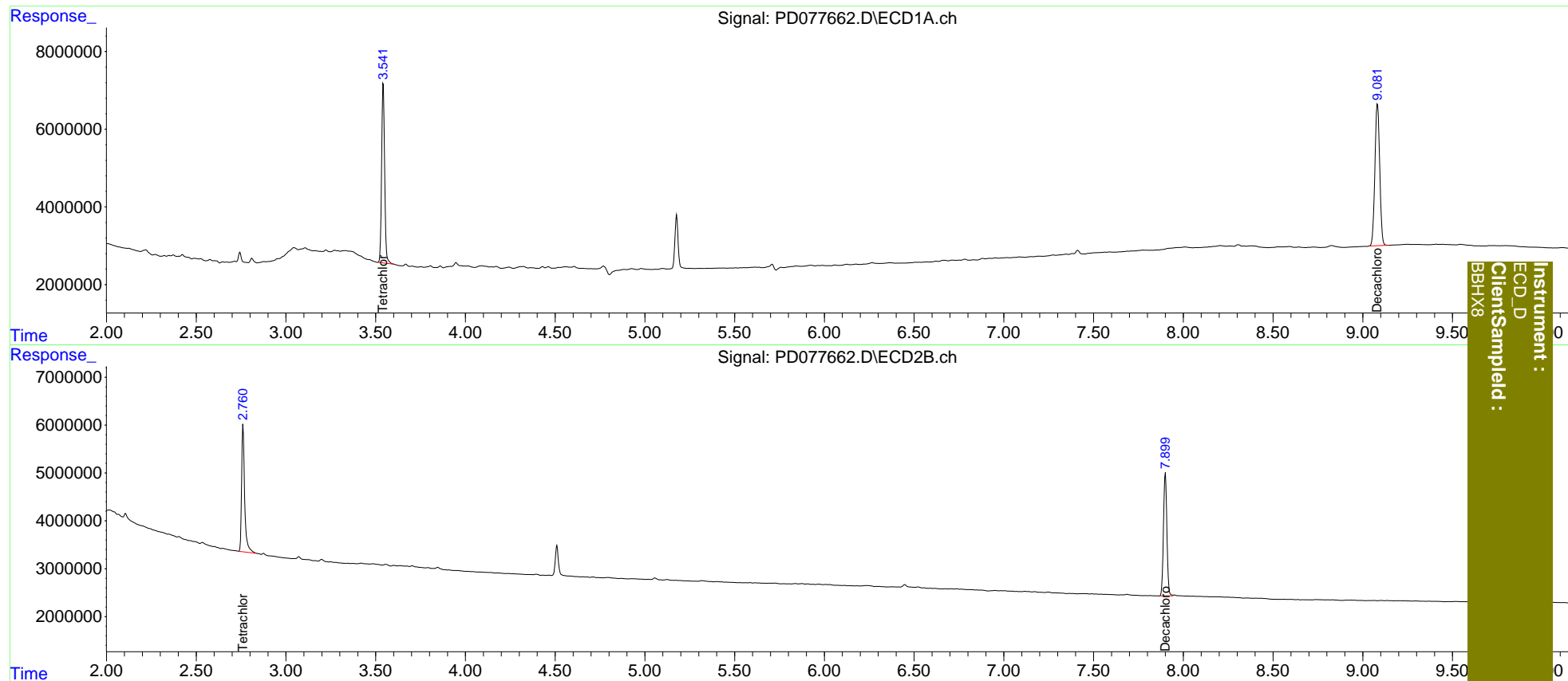
Target Compounds

(f)=RT Delta > 1/2 Window (#)=Amounts differ by > 25% (m)=manual int.

Data Path : Z:\pestpcbsrv\HPCHEM1\ECD\_D\Data\PD090523\  
 Data File : PD077662.D  
 Signal(s) : Signal #1: ECD1A.ch Signal #2: ECD2B.ch  
 Acq On : 05 Sep 2023 20:36  
 Operator : AR\AJ  
 Sample : 04247-19  
 Misc :  
 ALS Vial : 29 Sample Multiplier: 1

Integration File signal 1: autoint1.e  
 Integration File signal 2: autoint2.e  
 Quant Time: Sep 05 22:44:15 2023  
 Quant Method : Z:\pestpcbsrv\HPCHEM1\ECD\_D\Method\PD081423CLP.M  
 Quant Title : GC Extractables  
 QLast Update : Tue Aug 15 01:53:32 2023  
 Response via : Initial Calibration  
 Integrator: ChemStation

Volume Inj. : 1 µl  
 Signal #1 Phase : ZB-MR1 Signal #2 Phase: ZB-MR2  
 Signal #1 Info : 30M x 0.32mm x0.5 Signal #2 Info : 30M x 0.32mm x 0.25µm



Instrument :  
 ECD\_D  
 ClientSampled :  
 BBHX8