

Data Path : Z:\pestpcbsrv\HPCHEM1\ECD_D\Data\PD090523\
 Data File : PD077667.D
 Signal(s) : Signal #1: ECD1A.ch Signal #2: ECD2B.ch
 Acq On : 05 Sep 2023 21:43
 Operator : AR\AJ
 Sample : 04250-01
 Misc :
 ALS Vial : 32 Sample Multiplier: 1

Instrument :
 ECD_D
 ClientSampleId :
 BH4A0

Integration File signal 1: autoint1.e
 Integration File signal 2: autoint2.e
 Quant Time: Sep 05 22:46:26 2023
 Quant Method : Z:\pestpcbsrv\HPCHEM1\ECD_D\Method\PD081423CLP.M
 Quant Title : GC Extractables
 QLast Update : Tue Aug 15 01:53:32 2023
 Response via : Initial Calibration
 Integrator: ChemStation

Volume Inj. : 1 µl
 Signal #1 Phase : ZB-MR1 Signal #2 Phase: ZB-MR2
 Signal #1 Info : 30M x 0.32mm x0.5 Signal #2 Info : 30M x 0.32mm x 0.25µm

Compound	RT#1	RT#2	Resp#1	Resp#2	ng/ml	ng/ml

System Monitoring Compounds						
1) SA Tetrachlo...	3.542	2.761	42906985	24026633	19.544	19.287
27) SA Decachlor...	9.082	7.899	41983131	21674317	16.499	17.388

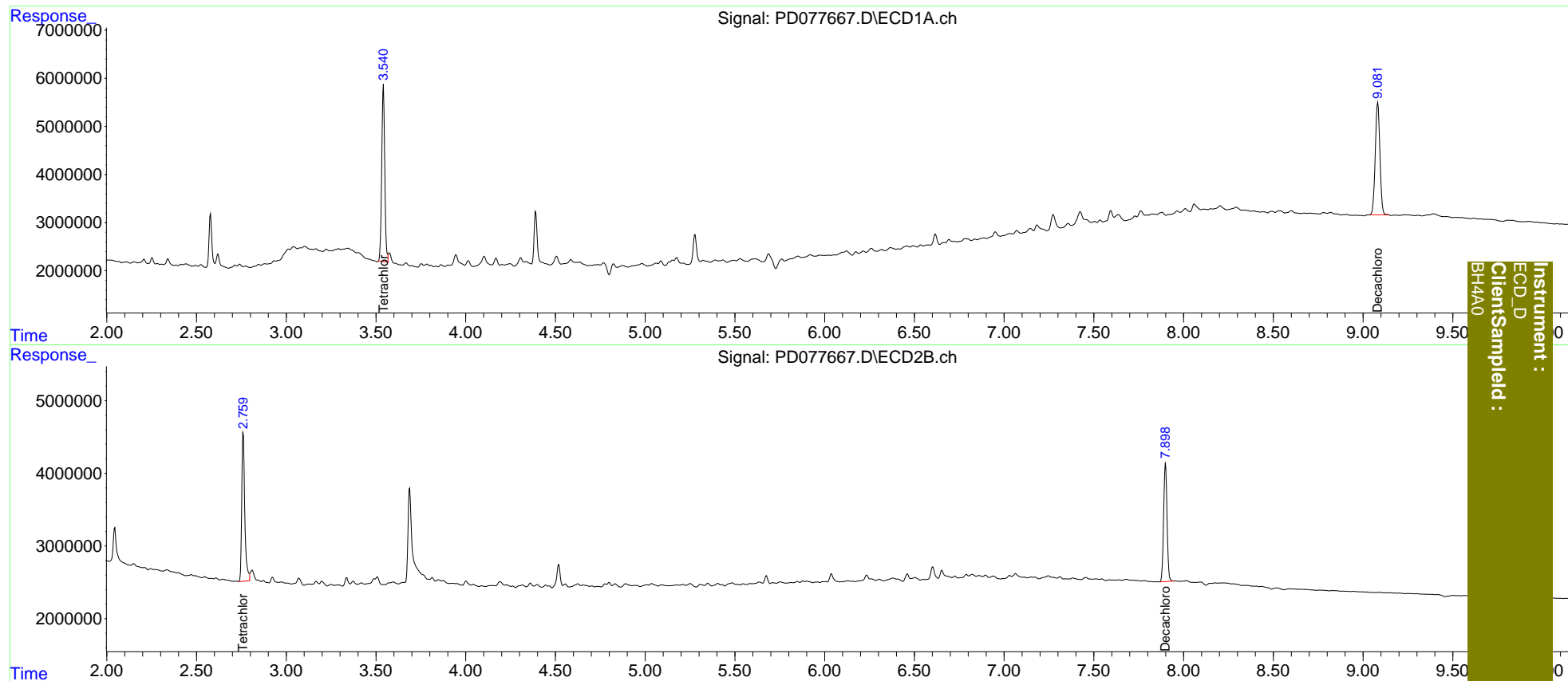
Target Compounds

 (f)=RT Delta > 1/2 Window (#)=Amounts differ by > 25% (m)=manual int.

Data Path : Z:\pestpcbsrv\HPCHEM1\ECD_D\Data\PD090523\
 Data File : PD077667.D
 Signal(s) : Signal #1: ECD1A.ch Signal #2: ECD2B.ch
 Acq On : 05 Sep 2023 21:43
 Operator : AR\AJ
 Sample : 04250-01
 Misc :
 ALS Vial : 32 Sample Multiplier: 1

Integration File signal 1: autoint1.e
 Integration File signal 2: autoint2.e
 Quant Time: Sep 05 22:46:26 2023
 Quant Method : Z:\pestpcbsrv\HPCHEM1\ECD_D\Method\PD081423CLP.M
 Quant Title : GC Extractables
 QLast Update : Tue Aug 15 01:53:32 2023
 Response via : Initial Calibration
 Integrator: ChemStation

Volume Inj. : 1 µl
 Signal #1 Phase : ZB-MR1 Signal #2 Phase: ZB-MR2
 Signal #1 Info : 30M x 0.32mm x0.5 Signal #2 Info : 30M x 0.32mm x 0.25µm



Instrument :
 ECD_D
 ClientSampled :
 BH4A0