

Data Path : Z:\pestpcbsrv\HPCHEM1\ECD\_D\Data\PD090624\  
 Data File : PD084919.D  
 Signal(s) : Signal #1: ECD1A.ch Signal #2: ECD2B.ch  
 Acq On : 06 Sep 2024 10:57  
 Operator : AR\AJ  
 Sample : PEM195  
 Misc :  
 ALS Vial : 3 Sample Multiplier: 1

**Instrument :**  
 ECD\_D  
**ClientSampleId :**  
 PEM108

**Manual Integrations**  
**APPROVED**

Reviewed By :Abdul Mirza 09/09/2024  
 Supervised By :Ankita Jodhani 09/09/2024

Integration File signal 1: autoint1.e  
 Integration File signal 2: autoint2.e  
 Quant Time: Sep 06 23:50:19 2024  
 Quant Method : Z:\pestpcbsrv\HPCHEM1\ECD\_D\Method\PD082524CLP.M  
 Quant Title : GC Extractables  
 QLast Update : Tue Aug 27 02:47:48 2024  
 Response via : Initial Calibration  
 Integrator: ChemStation

Volume Inj. : 1 µl  
 Signal #1 Phase : ZB-MR1 Signal #2 Phase: ZB-MR2  
 Signal #1 Info : 30M x 0.32mm x0.5 Signal #2 Info : 30M x 0.32mm x 0.25µm

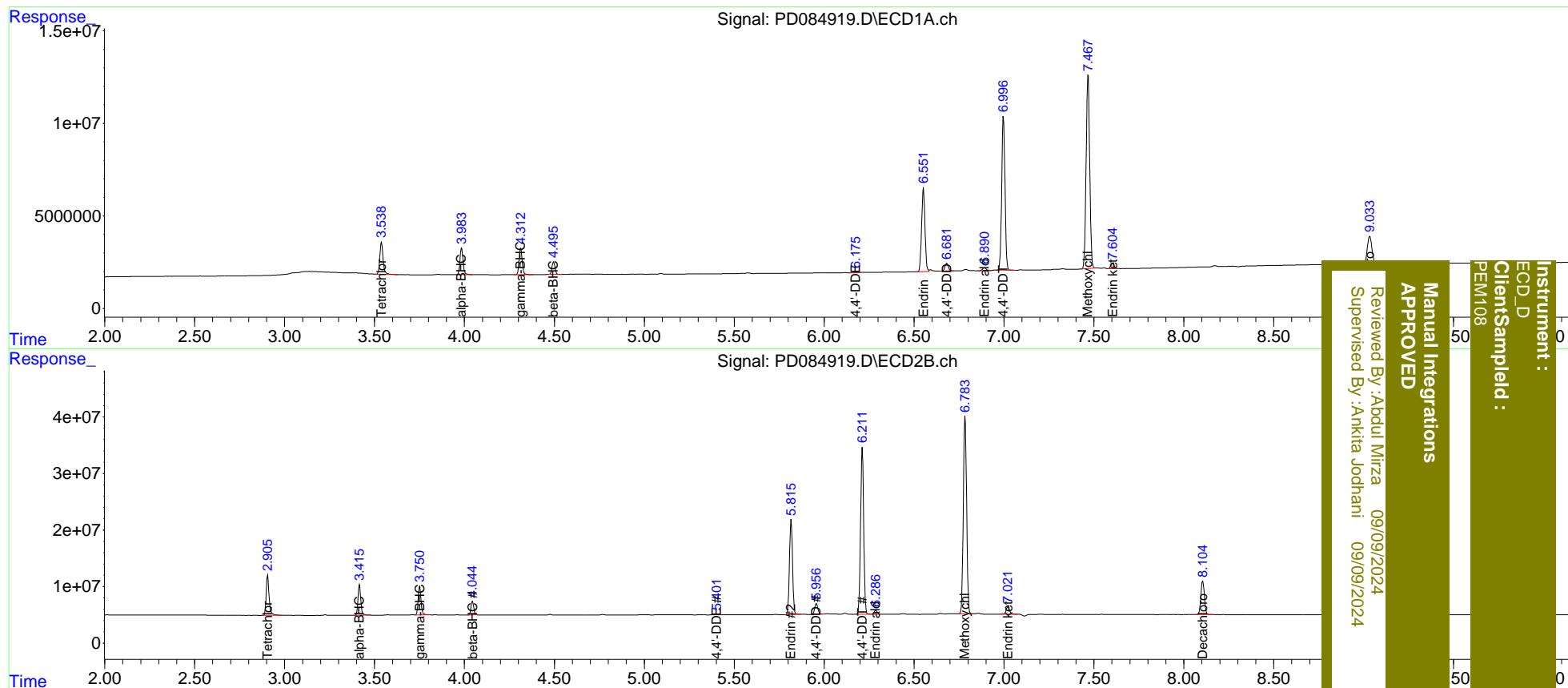
| Compound                    | RT#1  | RT#2  | Resp#1   | Resp#2   | ng/ml   | ng/ml   |
|-----------------------------|-------|-------|----------|----------|---------|---------|
| -----                       |       |       |          |          |         |         |
| System Monitoring Compounds |       |       |          |          |         |         |
| 1) SA Tetrachlo...          | 3.539 | 2.906 | 21877037 | 80325567 | 21.630  | 22.698  |
| 27) SA Decachlor...         | 9.034 | 8.106 | 26852723 | 80189094 | 20.561  | 23.061  |
| Target Compounds            |       |       |          |          |         |         |
| 2) A alpha-BHC              | 3.984 | 3.417 | 17295233 | 58687209 | 10.173  | 11.575  |
| 3) MA gamma-BHC...          | 4.313 | 3.752 | 16962820 | 55723623 | 10.485  | 11.499  |
| 6) B beta-BHC               | 4.496 | 4.045 | 8071111  | 26023273 | 11.112  | 12.004  |
| 12) B 4,4'-DDE              | 6.175 | 5.401 | 712075   | 1664911  | 0.571m  | 0.424m# |
| 14) MA Endrin               | 6.551 | 5.817 | 59097306 | 201.0E6  | 52.375m | 54.295  |
| 16) A 4,4'-DDD              | 6.682 | 5.957 | 5536034  | 23119834 | 5.607   | 6.813   |
| 17) MA 4,4'-DDT             | 6.997 | 6.213 | 105.6E6  | 353.1E6  | 117.986 | 110.372 |
| 18) B Endrin al...          | 6.892 | 6.286 | 2013717  | 7848626  | 2.230   | 2.749m  |
| 20) A Methoxychlor          | 7.468 | 6.784 | 144.2E6  | 447.2E6  | 276.786 | 270.304 |
| 21) B Endrin ke...          | 7.604 | 7.023 | 3758777  | 17211623 | 3.074m  | 3.909 # |

(f)=RT Delta > 1/2 Window (#)=Amounts differ by > 25% (m)=manual int.

Data Path : Z:\pestpcbsrv\HPCHEM1\ECD\_D\Data\PD090624\  
 Data File : PD084919.D  
 Signal(s) : Signal #1: ECD1A.ch Signal #2: ECD2B.ch  
 Acq On : 06 Sep 2024 10:57  
 Operator : AR\AJ  
 Sample : PEM195  
 Misc :  
 ALS Vial : 3 Sample Multiplier: 1

Integration File signal 1: autoint1.e  
 Integration File signal 2: autoint2.e  
 Quant Time: Sep 06 23:50:19 2024  
 Quant Method : Z:\pestpcbsrv\HPCHEM1\ECD\_D\Method\PD082524CLP.M  
 Quant Title : GC Extractables  
 QLast Update : Tue Aug 27 02:47:48 2024  
 Response via : Initial Calibration  
 Integrator: ChemStation

Volume Inj. : 1 µl  
 Signal #1 Phase : ZB-MR1 Signal #2 Phase: ZB-MR2  
 Signal #1 Info : 30M x 0.32mm x 0.5 Signal #2 Info : 30M x 0.32mm x 0.25µm



Instrument : ECD\_D  
 Client/Sampled : PEM108  
 Manual Integrations APPROVED  
 Reviewed By : Aboul Mirza 09/09/2024  
 Supervised By : Ankita Jodhani 09/09/2024