

Data Path : Z:\pestpcbsrv\HPCHEM1\ECD_D\Data\PD090624\
 Data File : PD084924.D
 Signal(s) : Signal #1: ECD1A.ch Signal #2: ECD2B.ch
 Acq On : 06 Sep 2024 13:18
 Operator : AR\AJ
 Sample : INDA310
 Misc :
 ALS Vial : 7 Sample Multiplier: 1

Instrument :
 ECD_D
ClientSampleId :
 INDA3176

Manual Integrations
APPROVED
 Reviewed By :Abdul Mirza 09/09/2024
 Supervised By :Ankita Jodhani 09/09/2024

Integration File signal 1: autoint1.e
 Integration File signal 2: autoint2.e
 Quant Time: Sep 06 23:51:34 2024
 Quant Method : Z:\pestpcbsrv\HPCHEM1\ECD_D\Method\PD082524CLP.M
 Quant Title : GC Extractables
 QLast Update : Tue Aug 27 02:47:48 2024
 Response via : Initial Calibration
 Integrator: ChemStation

Volume Inj. : 1 µl
 Signal #1 Phase : ZB-MR1 Signal #2 Phase: ZB-MR2
 Signal #1 Info : 30M x 0.32mm x0.5 Signal #2 Info : 30M x 0.32mm x 0.25µm

Compound	RT#1	RT#2	Resp#1	Resp#2	ng/ml	ng/ml

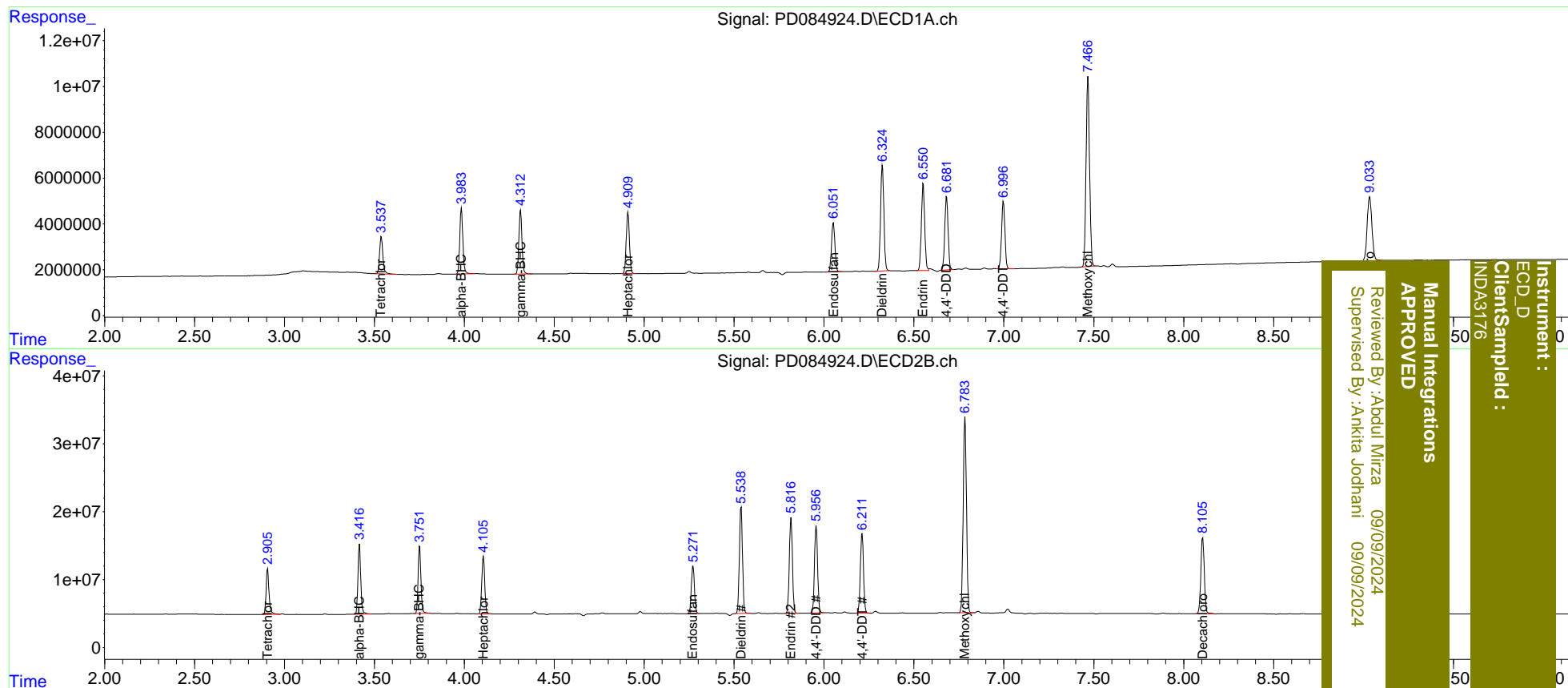
System Monitoring Compounds						
1) SA Tetrachlo...	3.539	2.906	20953846	76930632	20.718	21.739
27) SA Decachlor...	9.034	8.106	51111462	150.1E6	39.135	43.161
Target Compounds						
2) A alpha-BHC	3.984	3.417	34710196	111.9E6	20.416	22.077
3) MA gamma-BHC...	4.313	3.752	33296761	107.8E6	20.581	22.237
4) MA Heptachlor	4.910	4.106	33372514	97463590	21.690	22.895
9) A Endosulfan I	6.053	5.271	28245687	84195093	20.530	21.964m
13) MA Dieldrin	6.325	5.539	59362785	189.2E6	40.243	44.049
14) MA Endrin	6.550	5.817	49012675	170.9E6	43.437m	46.154
16) A 4,4'-DDD	6.682	5.957	40938060	154.2E6	41.463	45.443
17) MA 4,4'-DDT	6.998	6.212	38162802	143.9E6	42.634	44.975
20) A Methoxychlor	7.468	6.784	111.6E6	366.6E6	214.311	221.600

(f)=RT Delta > 1/2 Window (#)=Amounts differ by > 25% (m)=manual int.

Data Path : Z:\pestpcbsrv\HPCHEM1\ECD_D\Data\PD090624\
 Data File : PD084924.D
 Signal(s) : Signal #1: ECD1A.ch Signal #2: ECD2B.ch
 Acq On : 06 Sep 2024 13:18
 Operator : AR\AJ
 Sample : INDA310
 Misc :
 ALS Vial : 7 Sample Multiplier: 1

Integration File signal 1: autoint1.e
 Integration File signal 2: autoint2.e
 Quant Time: Sep 06 23:51:34 2024
 Quant Method : Z:\pestpcbsrv\HPCHEM1\ECD_D\Method\PD082524CLP.M
 Quant Title : GC Extractables
 QLast Update : Tue Aug 27 02:47:48 2024
 Response via : Initial Calibration
 Integrator: ChemStation

Volume Inj. : 1 µl
 Signal #1 Phase : ZB-MR1 Signal #2 Phase: ZB-MR2
 Signal #1 Info : 30M x 0.32mm x 0.5 Signal #2 Info : 30M x 0.32mm x 0.25µm



Instrument : ECD_D
 Client Sampled : INDA3176
 Manual Integrations APPROVED
 Reviewed By : Abdul Mirza 09/09/2024
 Supervised By : Ankitia Jodhani 09/09/2024