

Data Path : Z:\pestpcbsrv\HPCHEM1\ECD\_D\Data\PD090821\  
 Data File : PD065622.D  
 Signal(s) : Signal #1: ECD1A.ch Signal #2: ECD2B.ch  
 Acq On : 08 Sep 2021 12:05  
 Operator : AR\AJ  
 Sample : M3641-03  
 Misc :  
 ALS Vial : 7 Sample Multiplier: 1

**Instrument :**  
 ECD\_D  
**ClientSampled :**  
 HP-640

**Manual Integrations**  
**APPROVED**  
 mohammad  
 9/9/2021 9:21:59 AM

Integration File signal 1: autoint1.e  
 Integration File signal 2: autoint2.e  
 Quant Time: Sep 09 07:09:51 2021  
 Quant Method : Z:\pestpcbsrv\HPCHEM1\ECD\_D\Method\PD090421.M  
 Quant Title : GC Extractables  
 QLast Update : Sat Sep 04 01:23:47 2021  
 Response via : Initial Calibration  
 Integrator: ChemStation

Volume Inj. : 2 µl  
 Signal #1 Phase : ZB-MR2 Signal #2 Phase: ZB-MR1  
 Signal #1 Info : 30M x 0.32mm x0.2 Signal #2 Info : 30M x 0.32mm x 0.50µm

| Compound                    | RT#1   | RT#2  | Resp#1   | Resp#2   | ng/ml   | ng/ml    |
|-----------------------------|--------|-------|----------|----------|---------|----------|
| -----                       |        |       |          |          |         |          |
| System Monitoring Compounds |        |       |          |          |         |          |
| 1) SA Tetrachlo...          | 3.497  | 4.010 | 19847213 | 88133280 | 20.252  | 12.025m# |
| 28) SA Decachlor...         | 8.259f | 9.087 | 40630265 | 51160696 | 23.566m | 9.588 #  |

Target Compounds

(f)=RT Delta > 1/2 Window (#)=Amounts differ by > 25% (m)=manual int.

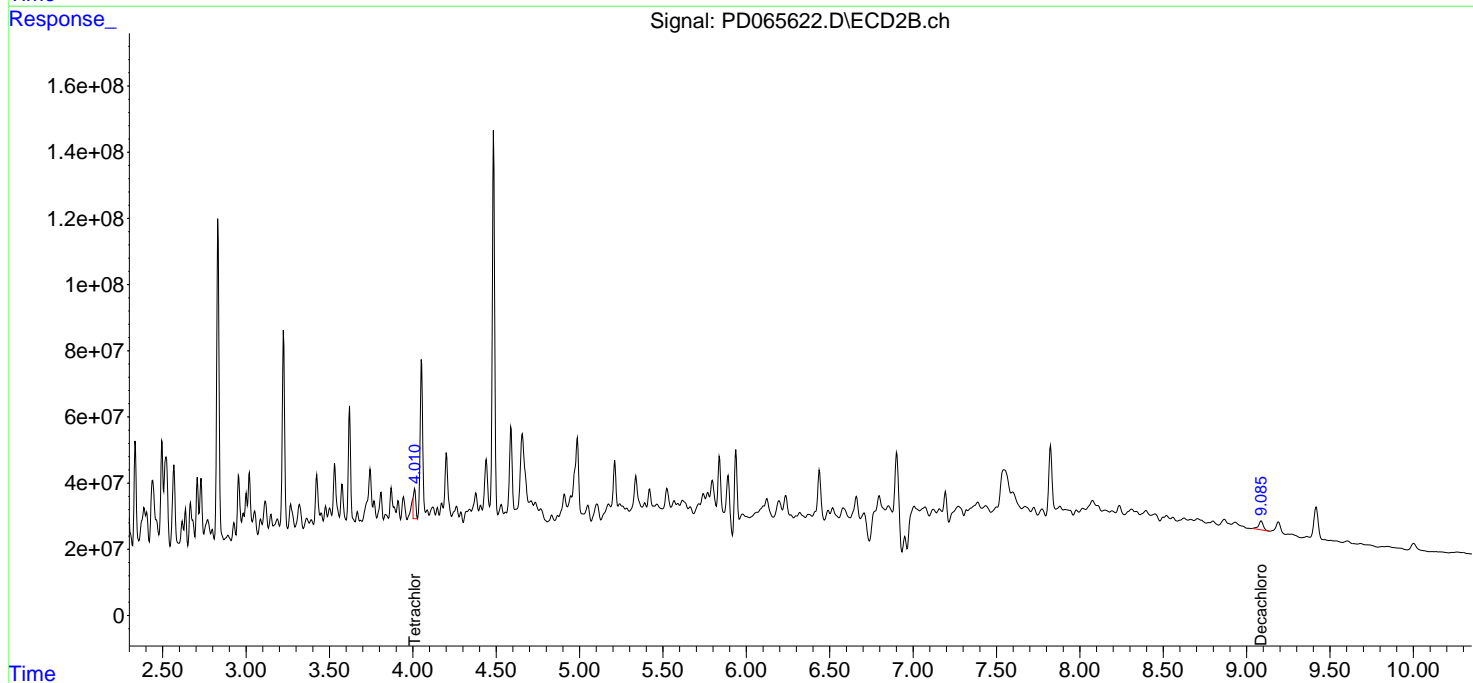
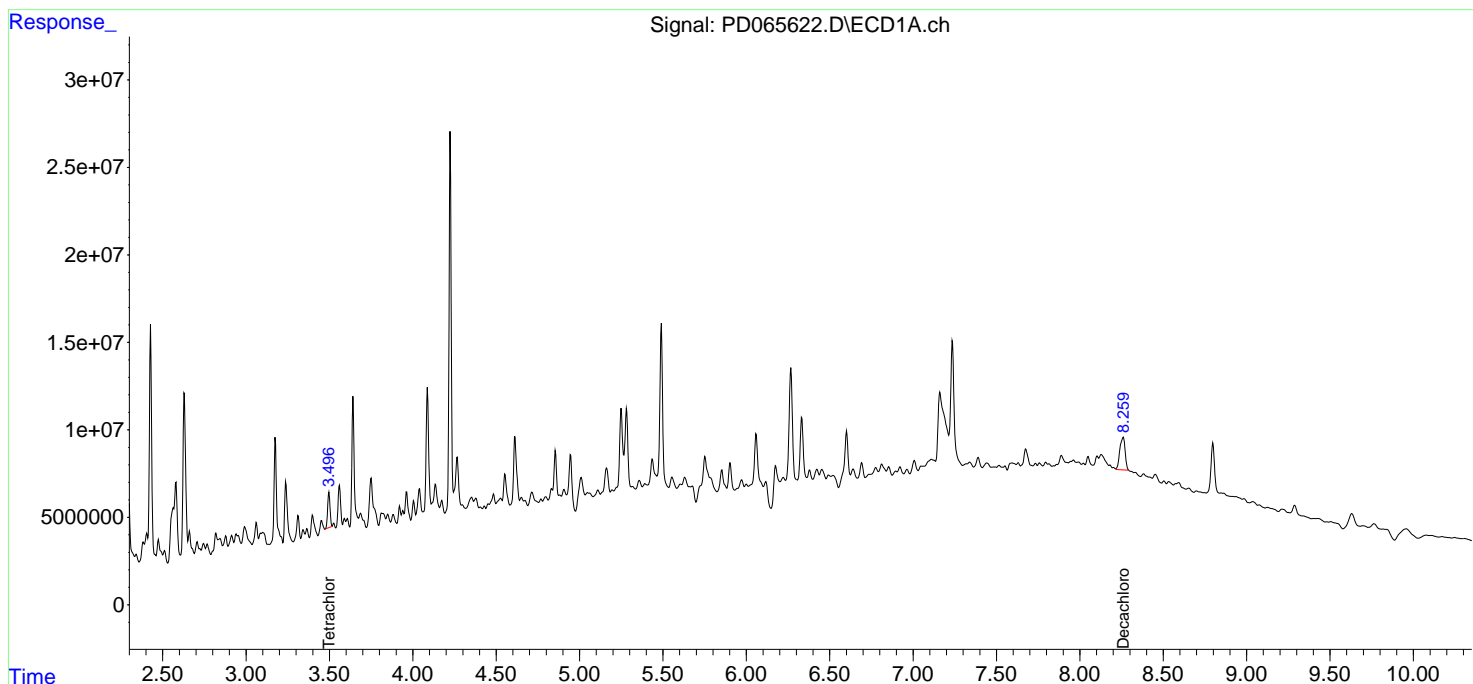
Data Path : Z:\pestpcbsrv\HPCHEM1\ECD\_D\Data\PD090821\  
 Data File : PD065622.D  
 Signal(s) : Signal #1: ECD1A.ch Signal #2: ECD2B.ch  
 Acq On : 08 Sep 2021 12:05  
 Operator : AR\AJ  
 Sample : M3641-03  
 Misc :  
 ALS Vial : 7 Sample Multiplier: 1

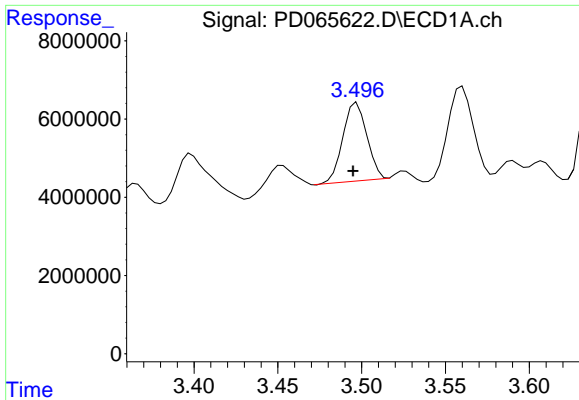
**Instrument :**  
 ECD\_D  
**ClientSampled :**  
 HP-640

**Manual Integrations**  
**APPROVED**  
 mohammad  
 9/9/2021 9:21:59 AM

Integration File signal 1: autoint1.e  
 Integration File signal 2: autoint2.e  
 Quant Time: Sep 09 07:09:51 2021  
 Quant Method : Z:\pestpcbsrv\HPCHEM1\ECD\_D\Method\PD090421.M  
 Quant Title : GC Extractables  
 QLast Update : Sat Sep 04 01:23:47 2021  
 Response via : Initial Calibration  
 Integrator: ChemStation

Volume Inj. : 2 µl  
 Signal #1 Phase : ZB-MR2 Signal #2 Phase: ZB-MR1  
 Signal #1 Info : 30M x 0.32mm x0.2 Signal #2 Info : 30M x 0.32mm x 0.50µm

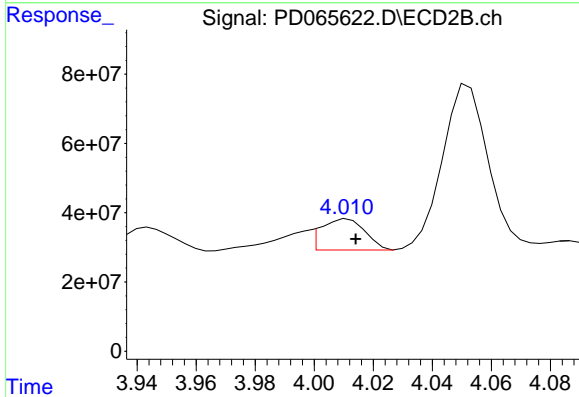




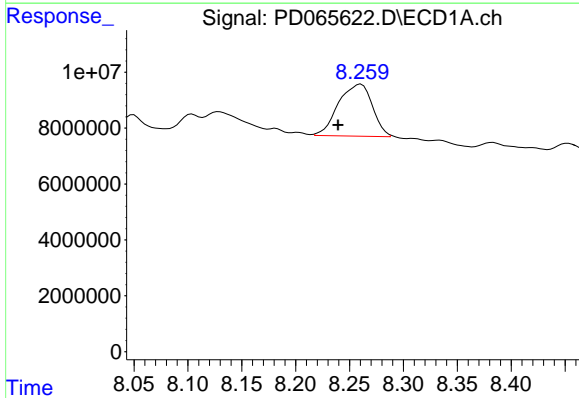
#1 Tetrachloro-m-xylene  
 R.T.: 3.497 min  
 Delta R.T.: 0.002 min  
 Response: 19847213  
 Conc: 20.25 ng/ml

Instrument :  
 ECD\_D  
 ClientSampled :  
 HP-640

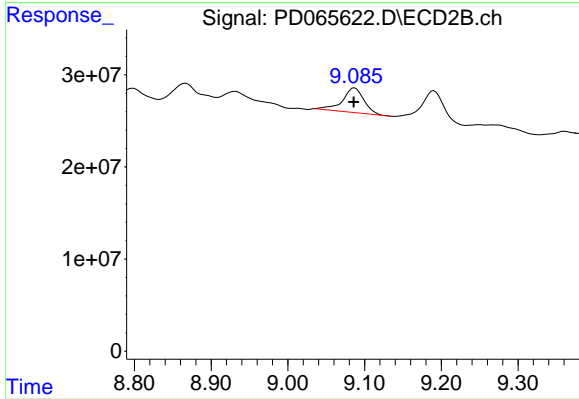
Manual Integrations  
 APPROVED  
 mohammad  
 9/9/2021 9:21:59 AM



#1 Tetrachloro-m-xylene  
 R.T.: 4.010 min  
 Delta R.T.: -0.004 min  
 Response: 88133280  
 Conc: 12.02 ng/ml m



#28 Decachlorobiphenyl  
 R.T.: 8.259 min  
 Delta R.T.: 0.020 min  
 Response: 40630265  
 Conc: 23.57 ng/ml m



#28 Decachlorobiphenyl  
 R.T.: 9.087 min  
 Delta R.T.: 0.000 min  
 Response: 51160696  
 Conc: 9.59 ng/ml