

Data Path : Z:\pestpcbsrv\HPCHEM1\ECD_D\Data\PD090921\
 Data File : PD065629.D
 Signal(s) : Signal #1: ECD1A.ch Signal #2: ECD2B.ch
 Acq On : 09 Sep 2021 09:46
 Operator : AR\AJ
 Sample : PEM
 Misc :
 ALS Vial : 3 Sample Multiplier: 1

Instrument :
 ECD_D
 ClientSampled :
 PEM

Manual Integrations
 APPROVED

mohammad
 9/10/2021 10:55:23 AM

Integration File signal 1: autoint1.e
 Integration File signal 2: autoint2.e
 Quant Time: Sep 10 01:32:32 2021
 Quant Method : Z:\pestpcbsrv\HPCHEM1\ECD_D\Method\PD090421.M
 Quant Title : GC Extractables
 QLast Update : Thu Sep 09 15:08:21 2021
 Response via : Initial Calibration
 Integrator: ChemStation

Volume Inj. : 2 µl
 Signal #1 Phase : ZB-MR2 Signal #2 Phase: ZB-MR1
 Signal #1 Info : 30M x 0.32mm x0.2 Signal #2 Info : 30M x 0.32mm x 0.50µm

	Compound	RT#1	RT#2	Resp#1	Resp#2	ng/ml	ng/ml

System Monitoring Compounds							
1)	SA Tetrachlo...	3.494	4.012	19419139	170.4E6	19.815	23.249
28)	SA Decachlor...	8.238	9.084	33079102	114.4E6	19.187	21.443
Target Compounds							
2)	A alpha-BHC	3.933	4.408	13493525	126.9E6	9.366	12.001 #
3)	MA gamma-BHC...	4.217	4.694	14003548	117.1E6	9.702	11.886
6)	B beta-BHC	4.465	4.870	8530085	59101090	6.696	12.695 #
12)	B 4,4'-DDE	5.650	6.358	280999	906886	0.197m	0.126m#
14)	MA Endrin	6.045	6.727	69133234	252.6E6	50.279	42.350
16)	A 4,4'-DDD	6.166	6.851	1971644	14653650	1.547	2.347 #
17)	MA 4,4'-DDT	6.406	7.148	130.8E6	619.6E6	95.049	101.715
18)	B Endrin al...	6.480	7.066	551840	2062521	0.438m	0.378
20)	A Methoxychlor	6.953	7.607	184.7E6	739.2E6	220.276	227.095
21)	B Endrin ke...	7.190	7.761	1927998	10297634	1.037	1.361 #

(f)=RT Delta > 1/2 Window (#)=Amounts differ by > 25% (m)=manual int.

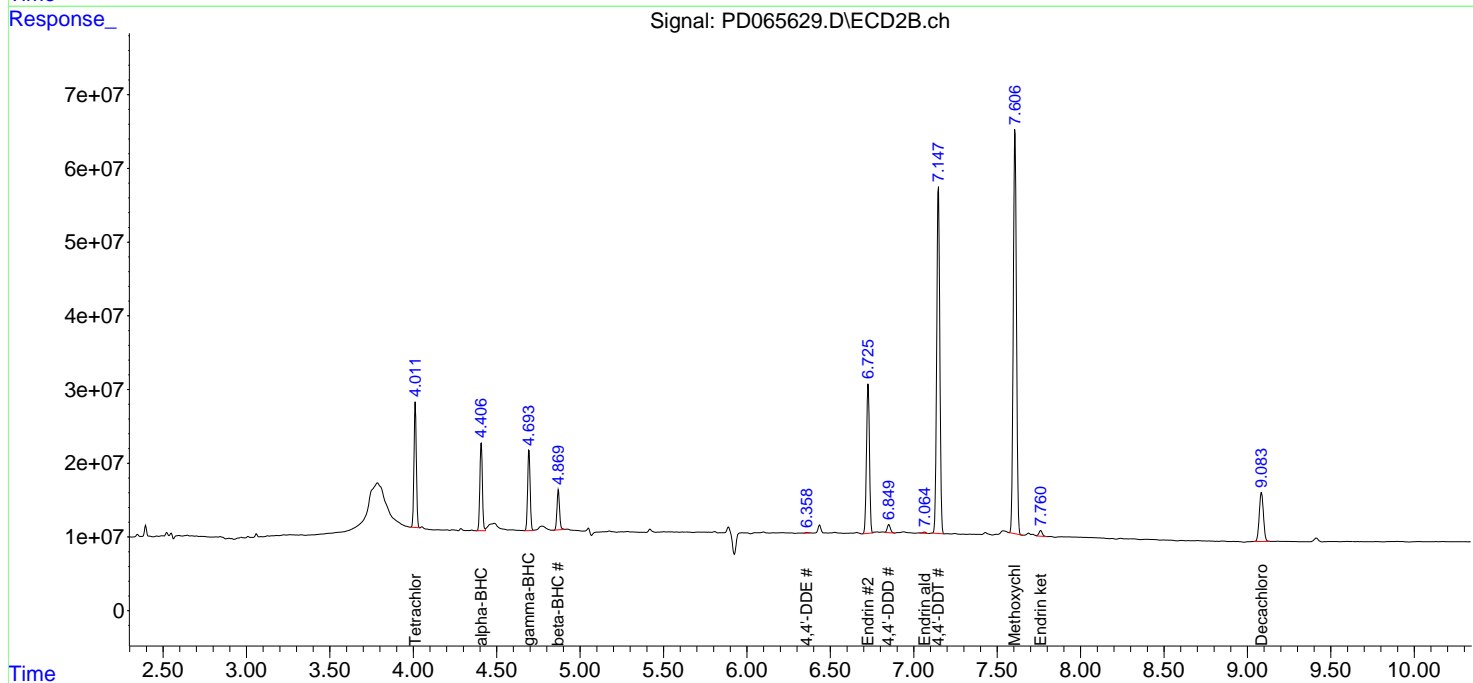
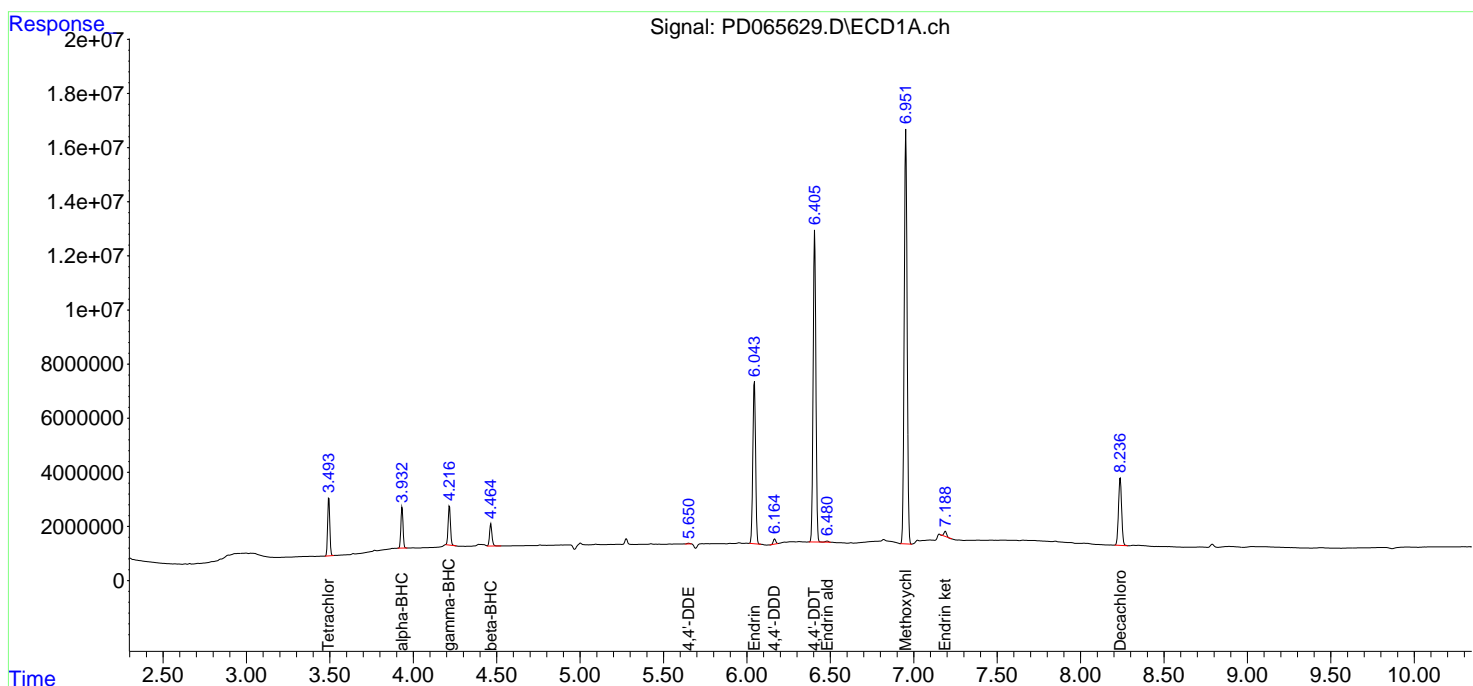
Data Path : Z:\pestpcbsrv\HPCHEM1\ECD_D\Data\PD090921\
 Data File : PD065629.D
 Signal(s) : Signal #1: ECD1A.ch Signal #2: ECD2B.ch
 Acq On : 09 Sep 2021 09:46
 Operator : AR\AJ
 Sample : PEM
 Misc :
 ALS Vial : 3 Sample Multiplier: 1

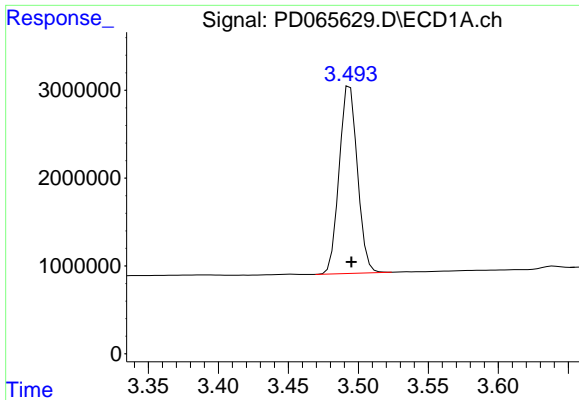
Instrument :
 ECD_D
 ClientSampled :
 PEM

Manual Integrations
APPROVED
 mohammad
 9/10/2021 10:55:23 AM

Integration File signal 1: autoint1.e
 Integration File signal 2: autoint2.e
 Quant Time: Sep 10 01:32:32 2021
 Quant Method : Z:\pestpcbsrv\HPCHEM1\ECD_D\Method\PD090421.M
 Quant Title : GC Extractables
 QLast Update : Thu Sep 09 15:08:21 2021
 Response via : Initial Calibration
 Integrator: ChemStation

Volume Inj. : 2 µl
 Signal #1 Phase : ZB-MR2 Signal #2 Phase: ZB-MR1
 Signal #1 Info : 30M x 0.32mm x 0.2 Signal #2 Info : 30M x 0.32mm x 0.50µm





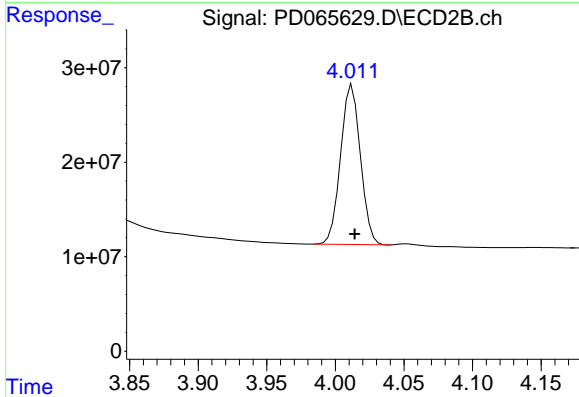
#1 Tetrachloro-m-xylene

R.T.: 3.494 min
 Delta R.T.: 0.000 min
 Response: 19419139
 Conc: 19.82 ng/ml

Instrument :
 ECD_D
 ClientSampled :
 PEM

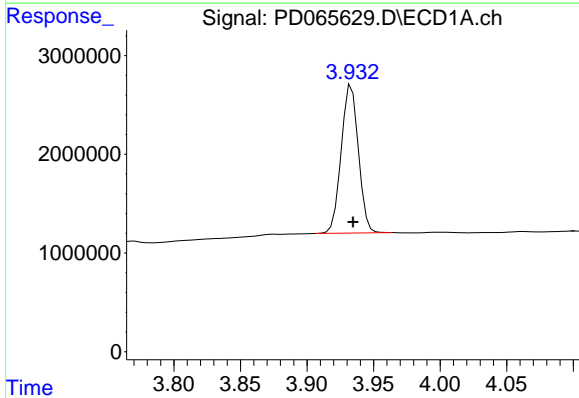
Manual Integrations
 APPROVED

mohammad
 9/10/2021 10:55:23 AM



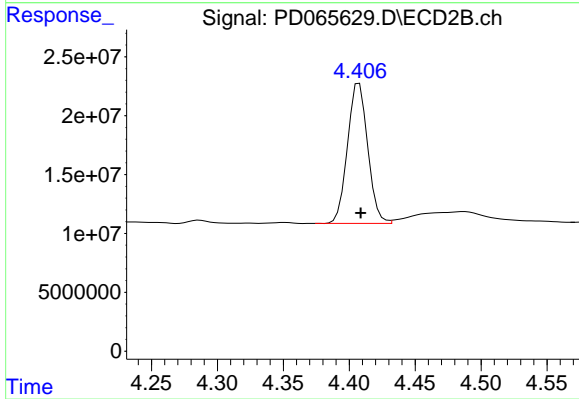
#1 Tetrachloro-m-xylene

R.T.: 4.012 min
 Delta R.T.: -0.002 min
 Response: 170398868
 Conc: 23.25 ng/ml



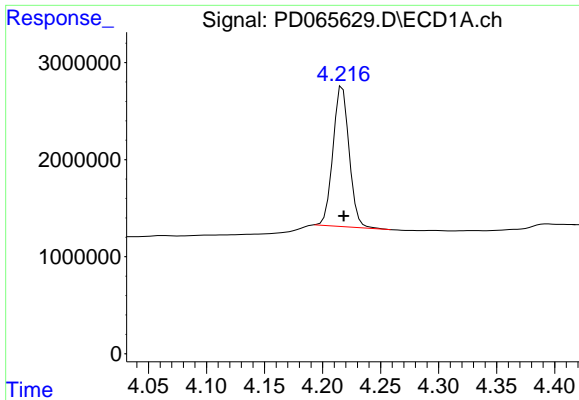
#2 alpha-BHC

R.T.: 3.933 min
 Delta R.T.: -0.001 min
 Response: 13493525
 Conc: 9.37 ng/ml



#2 alpha-BHC

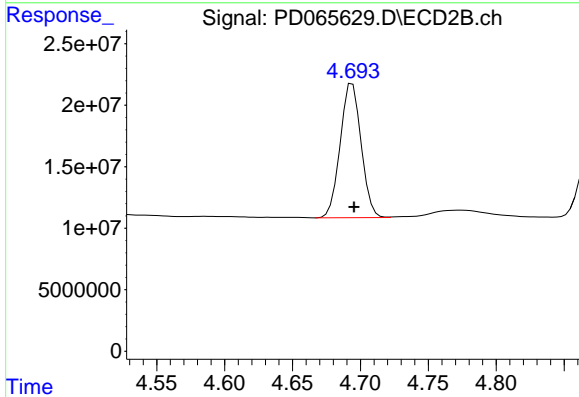
R.T.: 4.408 min
 Delta R.T.: -0.001 min
 Response: 126949669
 Conc: 12.00 ng/ml



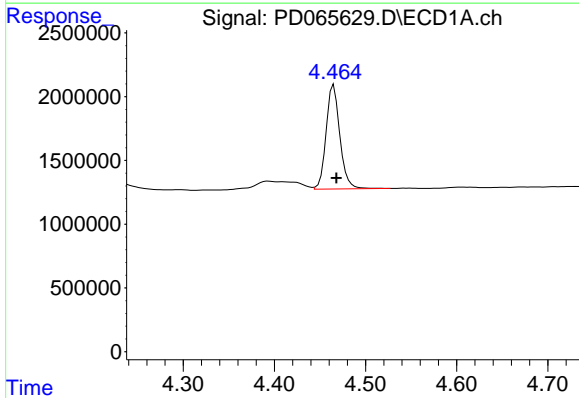
#3 gamma-BHC (Lindane)
 R.T.: 4.217 min
 Delta R.T.: -0.001 min
 Response: 14003548
 Conc: 9.70 ng/ml

Instrument :
 ECD_D
 ClientSampled :
 PEM

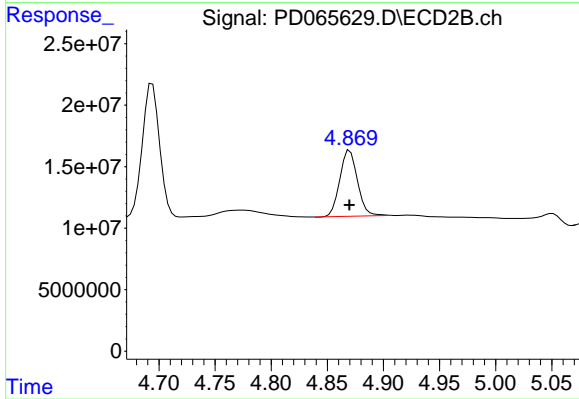
Manual Integrations
 APPROVED
 mohammad
 9/10/2021 10:55:23 AM



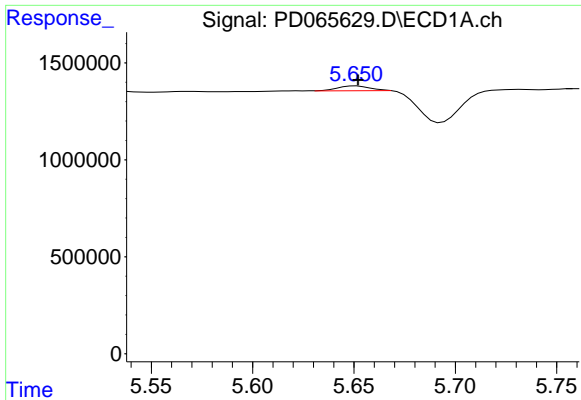
#3 gamma-BHC (Lindane)
 R.T.: 4.694 min
 Delta R.T.: -0.001 min
 Response: 117121565
 Conc: 11.89 ng/ml



#6 beta-BHC
 R.T.: 4.465 min
 Delta R.T.: -0.003 min
 Response: 8530085
 Conc: 6.70 ng/ml



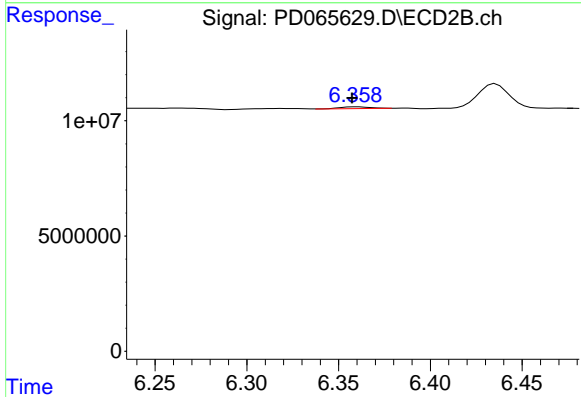
#6 beta-BHC
 R.T.: 4.870 min
 Delta R.T.: 0.000 min
 Response: 59101090
 Conc: 12.70 ng/ml



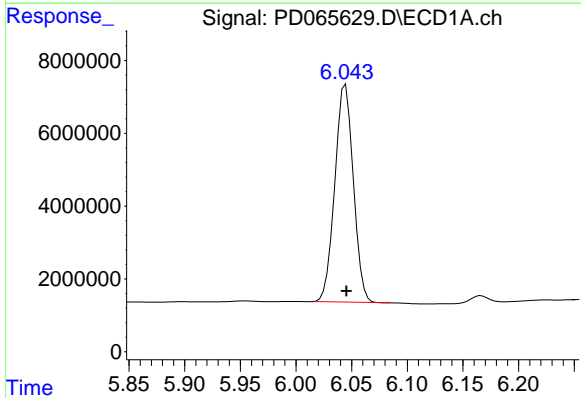
#12 4,4'-DDE
 R.T.: 5.650 min
 Delta R.T.: -0.002 min
 Response: 280999
 Conc: 0.20 ng/ml m

Instrument :
 ECD_D
 ClientSampled :
 PEM

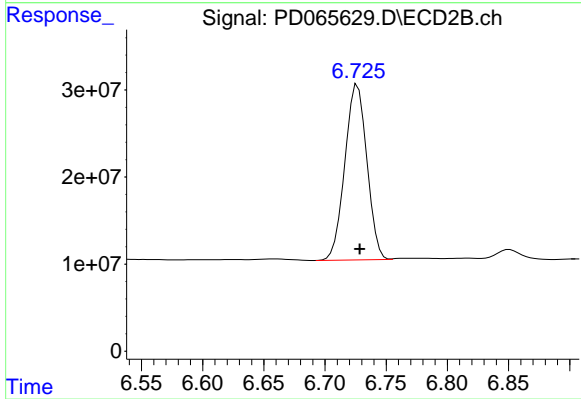
Manual Integrations
 APPROVED
 mohammad
 9/10/2021 10:55:23 AM



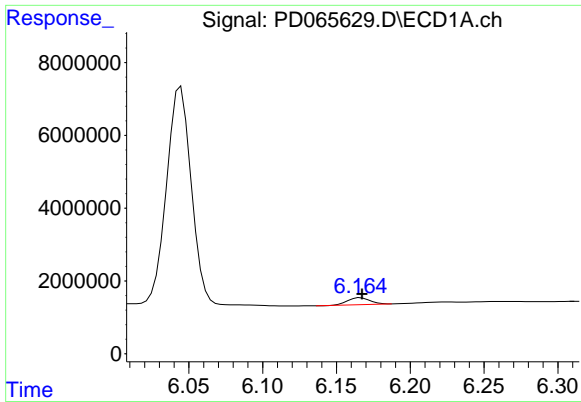
#12 4,4'-DDE
 R.T.: 6.358 min
 Delta R.T.: 0.000 min
 Response: 906886
 Conc: 0.13 ng/ml m



#14 Endrin
 R.T.: 6.045 min
 Delta R.T.: 0.000 min
 Response: 69133234
 Conc: 50.28 ng/ml



#14 Endrin
 R.T.: 6.727 min
 Delta R.T.: -0.002 min
 Response: 252633217
 Conc: 42.35 ng/ml



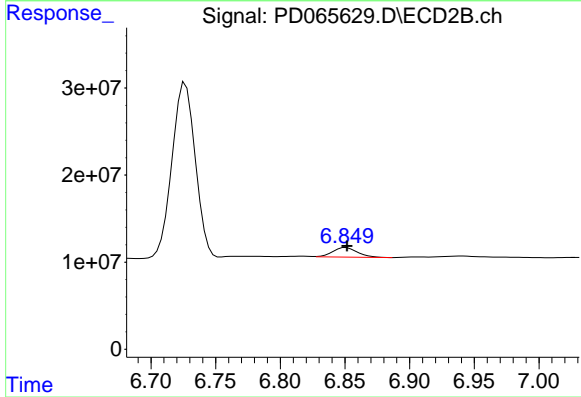
#16 4,4'-DDD

R.T.: 6.166 min
 Delta R.T.: 0.000 min
 Response: 1971644
 Conc: 1.55 ng/ml

Instrument :
 ECD_D
 ClientSampled :
 PEM

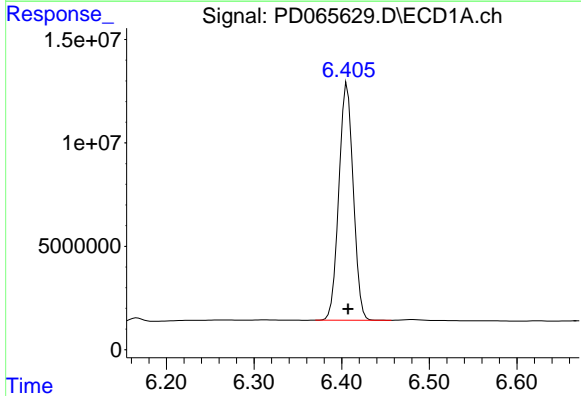
Manual Integrations
 APPROVED

mohammad
 9/10/2021 10:55:23 AM



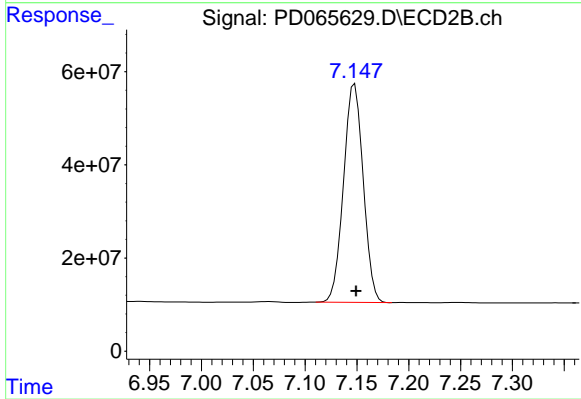
#16 4,4'-DDD

R.T.: 6.851 min
 Delta R.T.: 0.000 min
 Response: 14653650
 Conc: 2.35 ng/ml



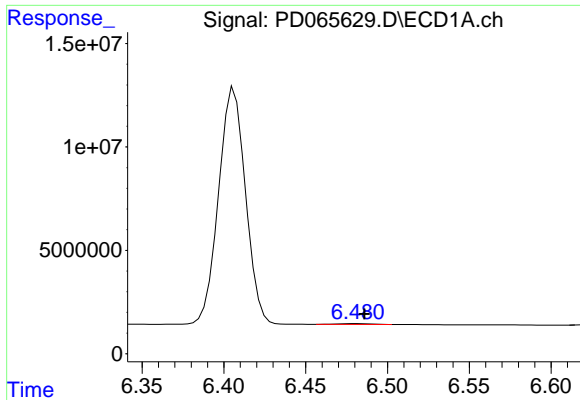
#17 4,4'-DDT

R.T.: 6.406 min
 Delta R.T.: 0.000 min
 Response: 130825680
 Conc: 95.05 ng/ml



#17 4,4'-DDT

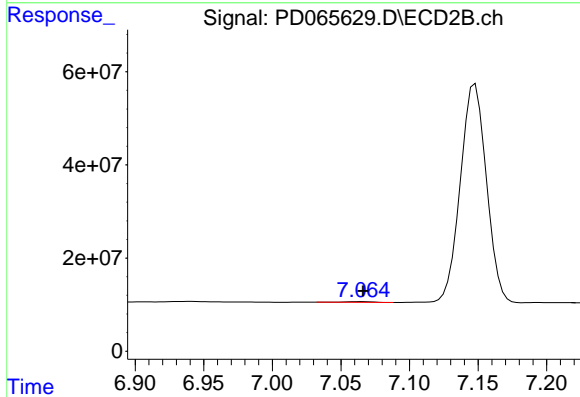
R.T.: 7.148 min
 Delta R.T.: -0.001 min
 Response: 619575868
 Conc: 101.71 ng/ml



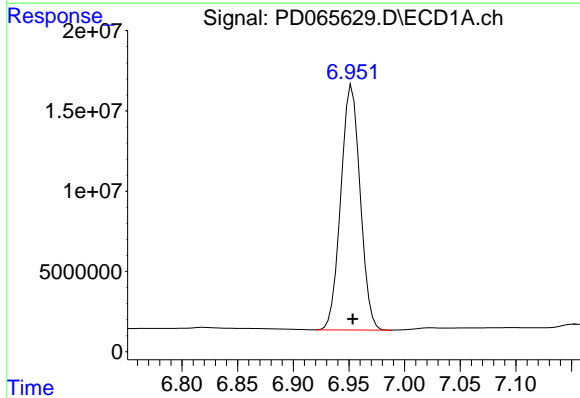
#18 Endrin aldehyde
 R.T.: 6.480 min
 Delta R.T.: -0.006 min
 Response: 551840
 Conc: 0.44 ng/ml m

Instrument :
 ECD_D
 ClientSampled :
 PEM

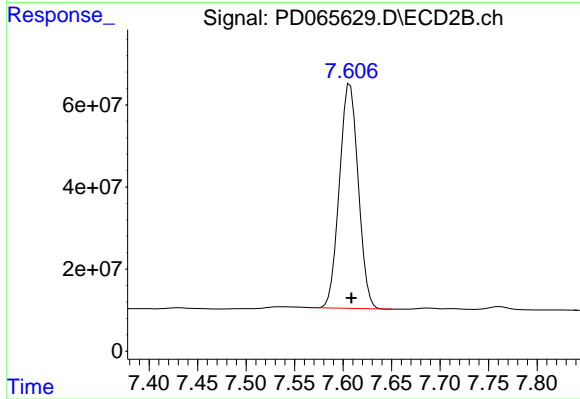
Manual Integrations
 APPROVED
 mohammad
 9/10/2021 10:55:23 AM



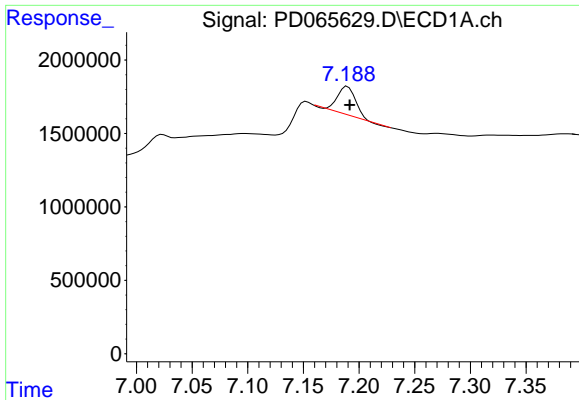
#18 Endrin aldehyde
 R.T.: 7.066 min
 Delta R.T.: 0.000 min
 Response: 2062521
 Conc: 0.38 ng/ml



#20 Methoxychlor
 R.T.: 6.953 min
 Delta R.T.: 0.000 min
 Response: 184706179
 Conc: 220.28 ng/ml



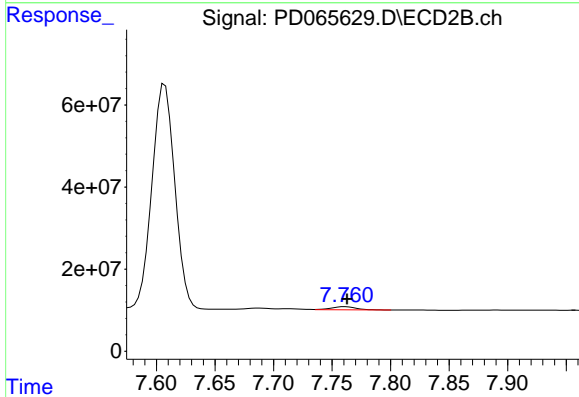
#20 Methoxychlor
 R.T.: 7.607 min
 Delta R.T.: -0.001 min
 Response: 739197314
 Conc: 227.09 ng/ml



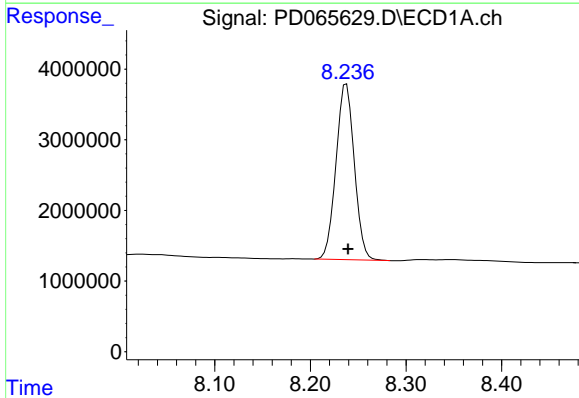
#21 Endrin ketone
 R.T.: 7.190 min
 Delta R.T.: -0.002 min
 Response: 1927998
 Conc: 1.04 ng/ml

Instrument :
 ECD_D
 ClientSampled :
 PEM

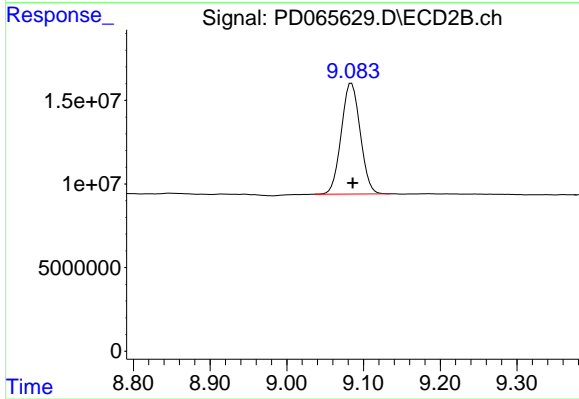
Manual Integrations
 APPROVED
 mohammad
 9/10/2021 10:55:23 AM



#21 Endrin ketone
 R.T.: 7.761 min
 Delta R.T.: -0.001 min
 Response: 10297634
 Conc: 1.36 ng/ml



#28 Decachlorobiphenyl
 R.T.: 8.238 min
 Delta R.T.: -0.002 min
 Response: 33079102
 Conc: 19.19 ng/ml



#28 Decachlorobiphenyl
 R.T.: 9.084 min
 Delta R.T.: -0.002 min
 Response: 114420959
 Conc: 21.44 ng/ml