

Data Path : Z:\pestpcbsrv\HPCHEM1\ECD_D\Data\PD090923\
 Data File : PD077787.D
 Signal(s) : Signal #1: ECD1A.ch Signal #2: ECD2B.ch
 Acq On : 08 Sep 2023 15:32
 Operator : AR\AJ
 Sample : 04306-01
 Misc :
 ALS Vial : 23 Sample Multiplier: 1

Instrument :
 ECD_D
 ClientSampleId :

Integration File signal 1: autoint1.e
 Integration File signal 2: autoint2.e
 Quant Time: Sep 08 22:53:55 2023
 Quant Method : Z:\pestpcbsrv\HPCHEM1\ECD_D\Method\PD090623CLP.M
 Quant Title : GC Extractables
 QLast Update : Wed Sep 06 16:40:06 2023
 Response via : Initial Calibration
 Integrator: ChemStation

Volume Inj. : 1 µl
 Signal #1 Phase : ZB-MR1 Signal #2 Phase: ZB-MR2
 Signal #1 Info : 30M x 0.32mm x0.5 Signal #2 Info : 30M x 0.32mm x 0.25µm

Compound	RT#1	RT#2	Resp#1	Resp#2	ng/ml	ng/ml

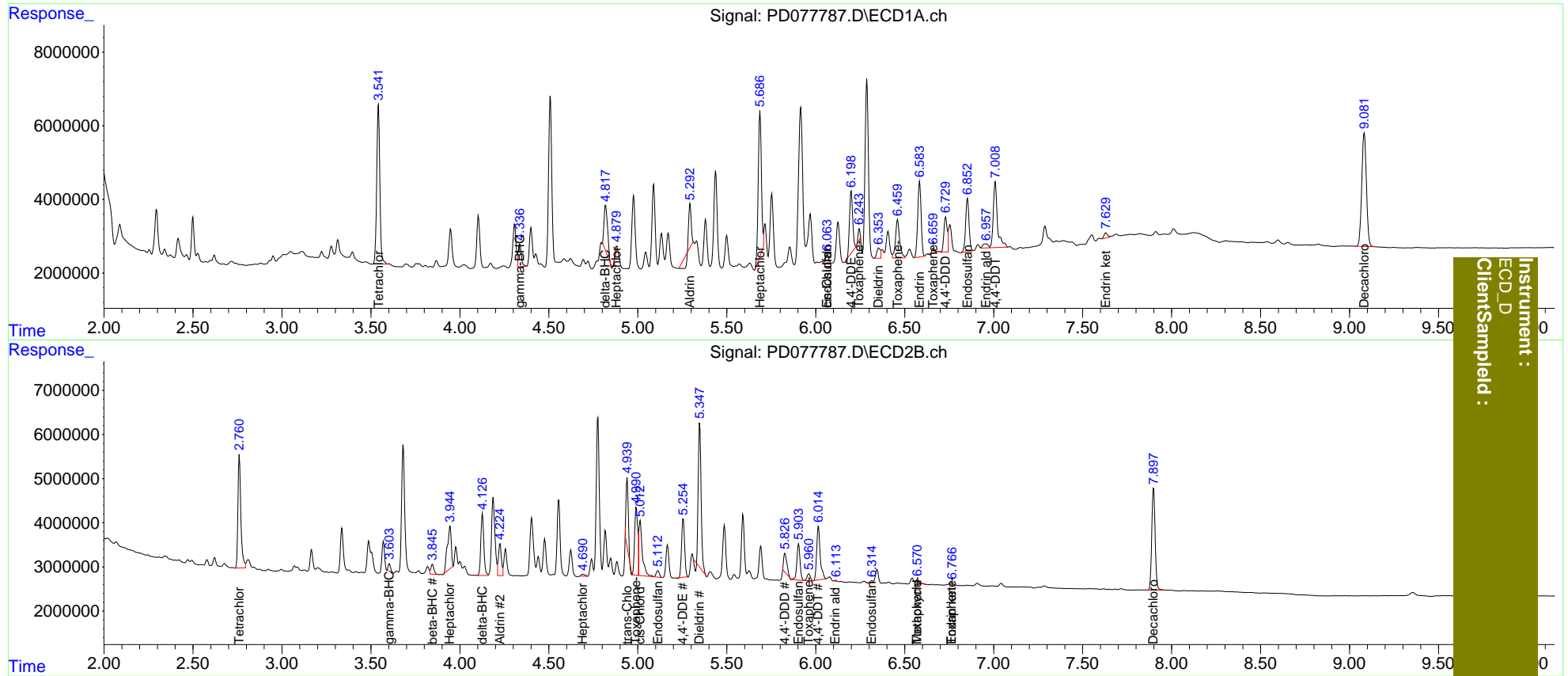
System Monitoring Compounds						
1) SA Tetrachlo...	3.542	2.761	52624318	28984784	20.737	19.612
2) SA Decachlor...	9.083	7.899	56221135	30734476	17.997	18.978
Target Compounds						
3) MA gamma-BHC...	4.337	3.604	7592476	1561111	1.878	0.723 #
4) MA Heptachlor	4.881f	3.945	495707	14547863	0.119	6.543 #
5) MB Aldrin	5.294f	4.226	7228071	8366138	1.731	3.733 #
7) B delta-BHC	4.819f	4.127	17541595	16617724	4.369	7.455 #
8) B Heptachlo...	5.687	4.692	47735527	615602	12.352	0.293 #
9) A Endosulfan I	6.064	5.113	2829650	1815333	0.843	1.011
10) B trans-Chl...	5.970	4.940	-13312667	13558664	N.D.	6.790
11) B cis-Chlor...	6.064f	5.014	2829650	17397532	0.734	8.507 #
12) B 4,4'-DDE	6.200	5.255f	20413756	15665158	5.758	8.246 #
13) MA Dieldrin	6.354	5.348	3729593	36139260	0.996	17.489 #
14) MA Endrin	6.584	5.626	27287508	-6102554	8.844	N.D. #
15) B Endosulfa...	6.853f	5.904	19238905	10171081	5.810	5.620
16) A 4,4'-DDD	6.730	5.827f	11838016	5490631	4.451	4.079
17) MA 4,4'-DDT	7.009	6.015	28972532	16904735	10.575	11.961
18) B Endrin al...	6.958	6.112	2349704	166498	0.904	0.118 #
19) B Endosulfa...	0.000	6.315	0	354684	N.D.	0.215
21) B Endrin ke...	7.630	6.765f	1905603	452812	0.553	0.236 #
22) Toxaphene-1	6.245	4.992	2610137	18363433	97.821	1759.322 #
23) Toxaphene-2	6.460	5.691	16758653	-72182	510.943	N.D. #
24) Toxaphene-3	6.661	5.961	1167169	1715081	50.562	125.755 #
25) Toxaphene-4	0.000	6.571	0	317157	N.D.	8.218

(f)=RT Delta > 1/2 Window (#)=Amounts differ by > 25% (m)=manual int.

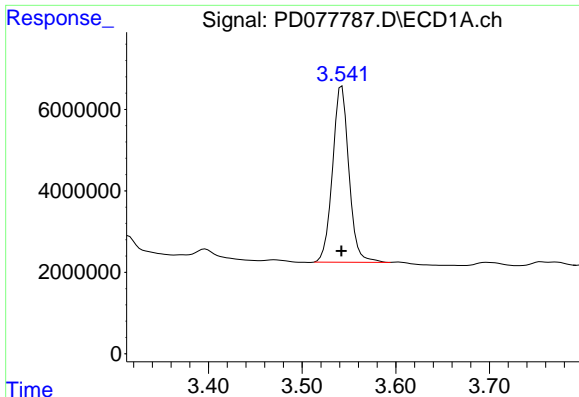
Data Path : Z:\pestpcbsrv\HPCHEM1\ECD_D\Data\PD090923\
 Data File : PD077787.D
 Signal(s) : Signal #1: ECD1A.ch Signal #2: ECD2B.ch
 Acq On : 08 Sep 2023 15:32
 Operator : AR\AJ
 Sample : 04306-01
 Misc :
 ALS Vial : 23 Sample Multiplier: 1

Integration File signal 1: autoint1.e
 Integration File signal 2: autoint2.e
 Quant Time: Sep 08 22:53:55 2023
 Quant Method : Z:\pestpcbsrv\HPCHEM1\ECD_D\Method\PD090623CLP.M
 Quant Title : GC Extractables
 QLast Update : Wed Sep 06 16:40:06 2023
 Response via : Initial Calibration
 Integrator: ChemStation

Volume Inj. : 1 µl
 Signal #1 Phase : ZB-MR1 Signal #2 Phase: ZB-MR2
 Signal #1 Info : 30M x 0.32mm x0.5 Signal #2 Info : 30M x 0.32mm x 0.25µm



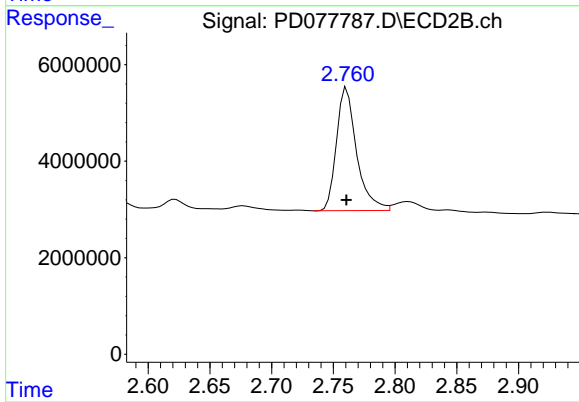
Instrument :
 ECD_D
 Client\Sampled :



#1 Tetrachloro-m-xylene

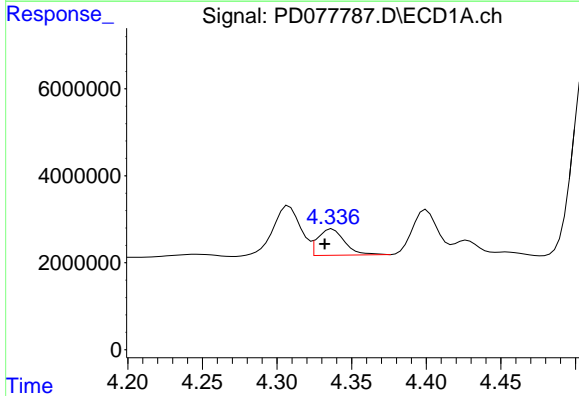
R.T.: 3.542 min
 Delta R.T.: 0.000 min
 Response: 52624318
 Conc: 20.74 ng/ml

Instrument :
 ECD_D
 ClientSampleId :



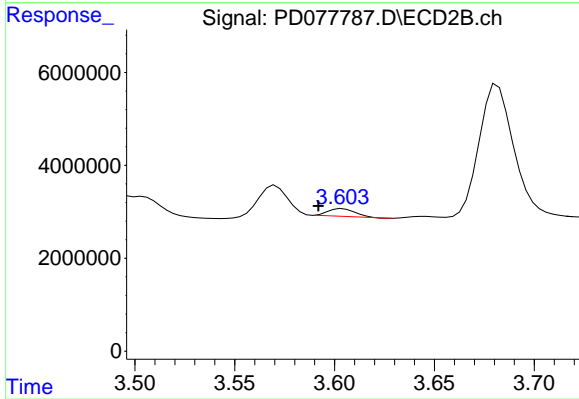
#1 Tetrachloro-m-xylene

R.T.: 2.761 min
 Delta R.T.: 0.000 min
 Response: 28984784
 Conc: 19.61 ng/ml



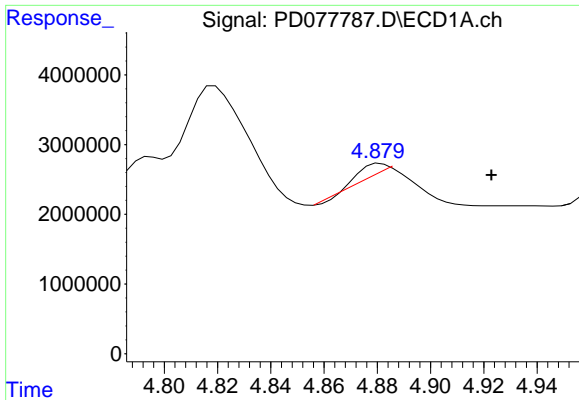
#3 gamma-BHC (Lindane)

R.T.: 4.337 min
 Delta R.T.: 0.005 min
 Response: 7592476
 Conc: 1.88 ng/ml



#3 gamma-BHC (Lindane)

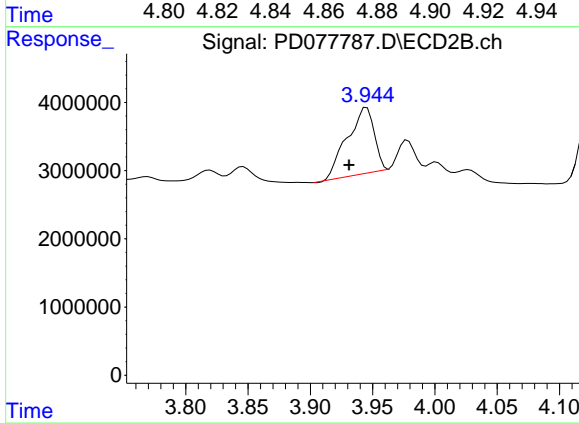
R.T.: 3.604 min
 Delta R.T.: 0.012 min
 Response: 1561111
 Conc: 0.72 ng/ml



#4 Heptachlor

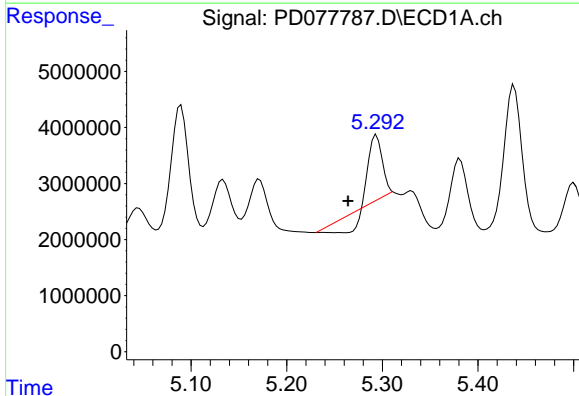
R.T.: 4.881 min
 Delta R.T.: -0.042 min
 Response: 495707
 Conc: 0.12 ng/ml

Instrument :
 ECD_D
 ClientSampleId :



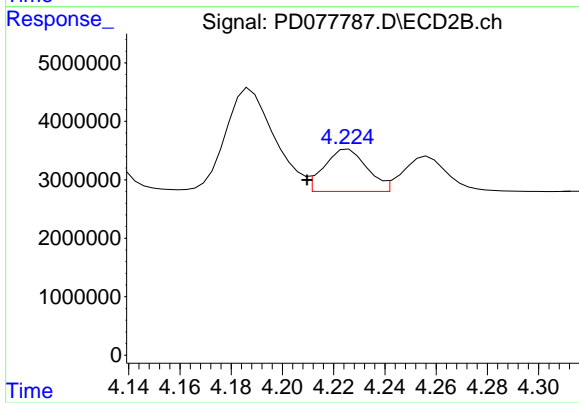
#4 Heptachlor

R.T.: 3.945 min
 Delta R.T.: 0.014 min
 Response: 14547863
 Conc: 6.54 ng/ml



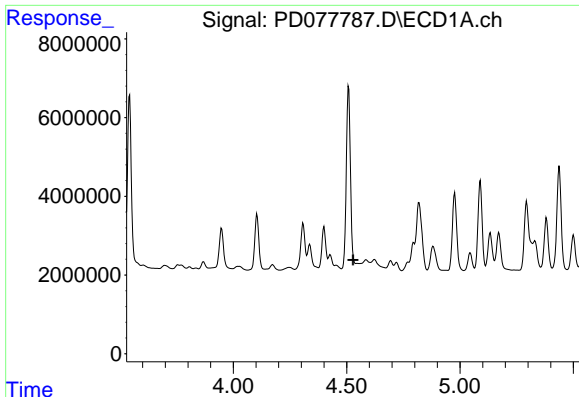
#5 Aldrin

R.T.: 5.294 min
 Delta R.T.: 0.030 min
 Response: 7228071
 Conc: 1.73 ng/ml



#5 Aldrin

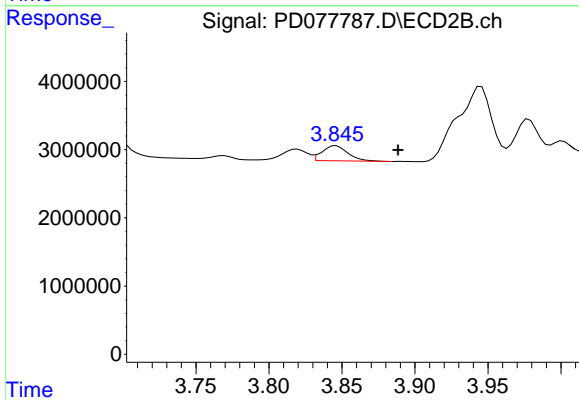
R.T.: 4.226 min
 Delta R.T.: 0.016 min
 Response: 8366138
 Conc: 3.73 ng/ml



#6 beta-BHC

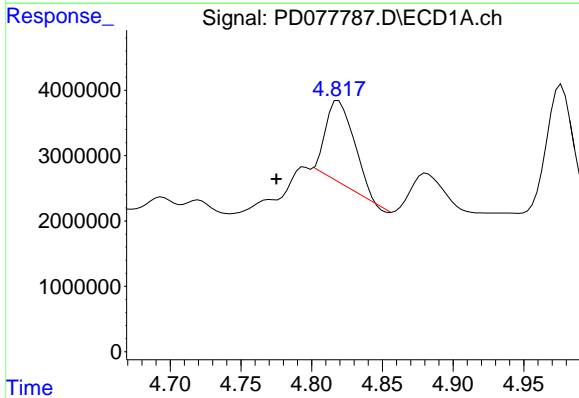
R.T.: 4.508 min
 Delta R.T.: -0.020 min
 Response: -5712251
 Conc: N.D.

Instrument :
 ECD_D
 ClientSampleId :



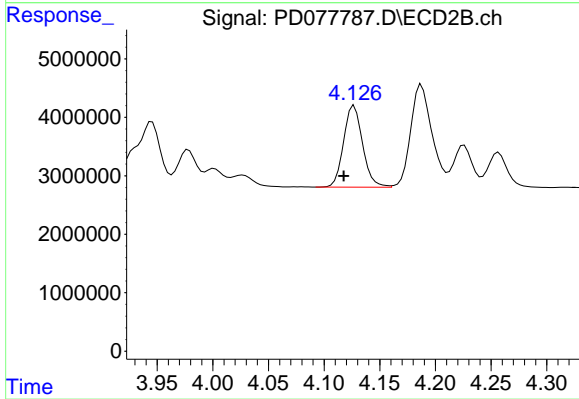
#6 beta-BHC

R.T.: 3.846 min
 Delta R.T.: -0.042 min
 Response: 2725631
 Conc: 2.76 ng/ml



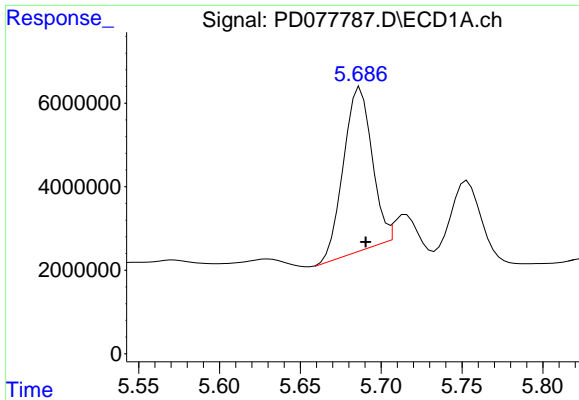
#7 delta-BHC

R.T.: 4.819 min
 Delta R.T.: 0.044 min
 Response: 17541595
 Conc: 4.37 ng/ml



#7 delta-BHC

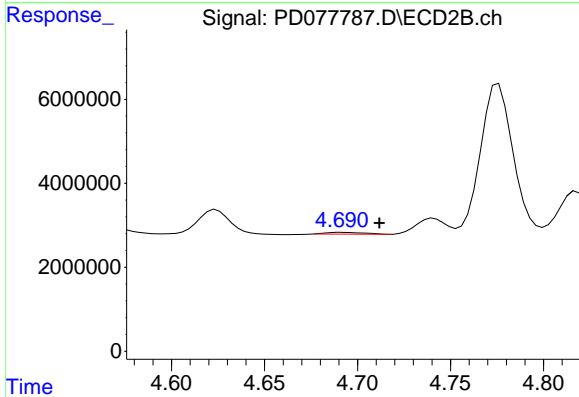
R.T.: 4.127 min
 Delta R.T.: 0.009 min
 Response: 16617724
 Conc: 7.46 ng/ml



#8 Heptachlor epoxide

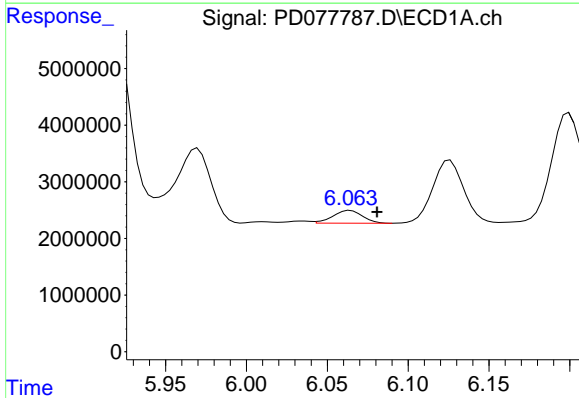
R.T.: 5.687 min
 Delta R.T.: -0.003 min
 Response: 47735527
 Conc: 12.35 ng/ml

Instrument :
 ECD_D
 ClientSampleId :



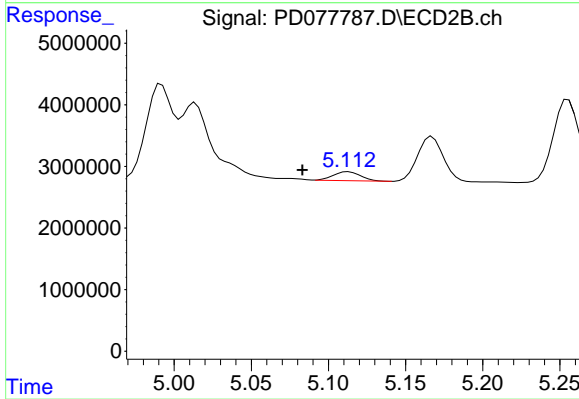
#8 Heptachlor epoxide

R.T.: 4.692 min
 Delta R.T.: -0.020 min
 Response: 615602
 Conc: 0.29 ng/ml



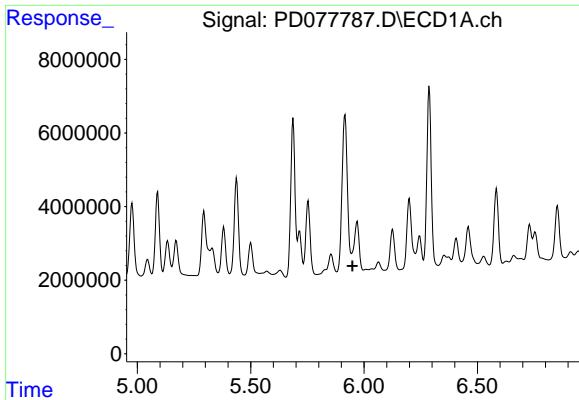
#9 Endosulfan I

R.T.: 6.064 min
 Delta R.T.: -0.017 min
 Response: 2829650
 Conc: 0.84 ng/ml



#9 Endosulfan I

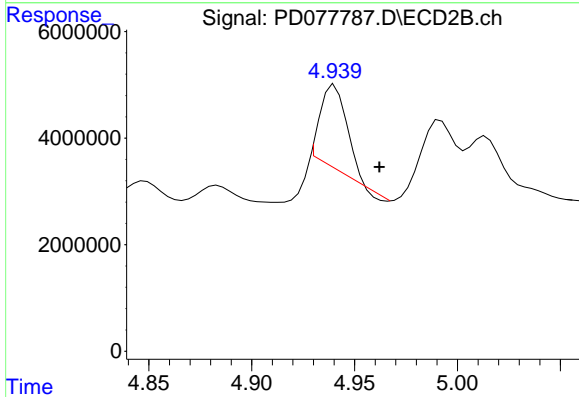
R.T.: 5.113 min
 Delta R.T.: 0.030 min
 Response: 1815333
 Conc: 1.01 ng/ml



#10 trans-Chlordane

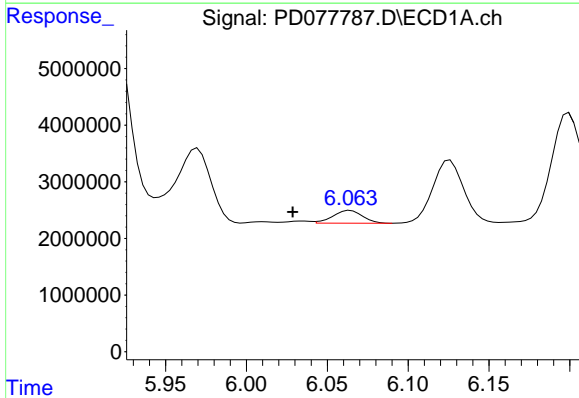
R.T.: 5.970 min
 Delta R.T.: 0.021 min
 Response: -13312667
 Conc: N.D.

Instrument :
 ECD_D
 ClientSampleId :



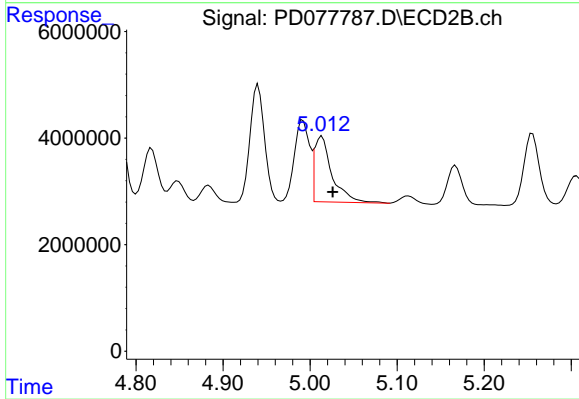
#10 trans-Chlordane

R.T.: 4.940 min
 Delta R.T.: -0.022 min
 Response: 13558664
 Conc: 6.79 ng/ml



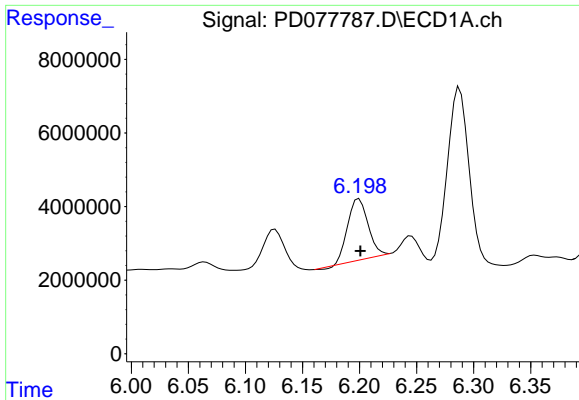
#11 cis-Chlordane

R.T.: 6.064 min
 Delta R.T.: 0.035 min
 Response: 2829650
 Conc: 0.73 ng/ml



#11 cis-Chlordane

R.T.: 5.014 min
 Delta R.T.: -0.012 min
 Response: 17397532
 Conc: 8.51 ng/ml

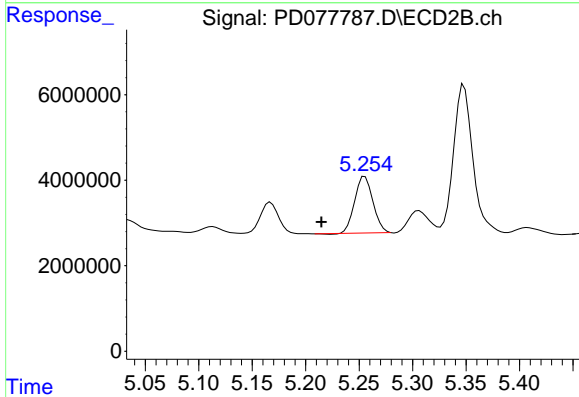


#12 4,4'-DDE

R.T.: 6.200 min
 Delta R.T.: -0.001 min
 Response: 20413756
 Conc: 5.76 ng/ml

Instrument :
 ECD_D
 ClientSampleId :

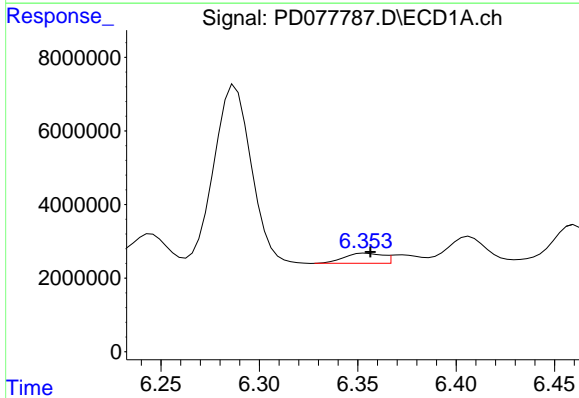
Time 6.00 6.05 6.10 6.15 6.20 6.25 6.30 6.35



#12 4,4'-DDE

R.T.: 5.255 min
 Delta R.T.: 0.041 min
 Response: 15665158
 Conc: 8.25 ng/ml

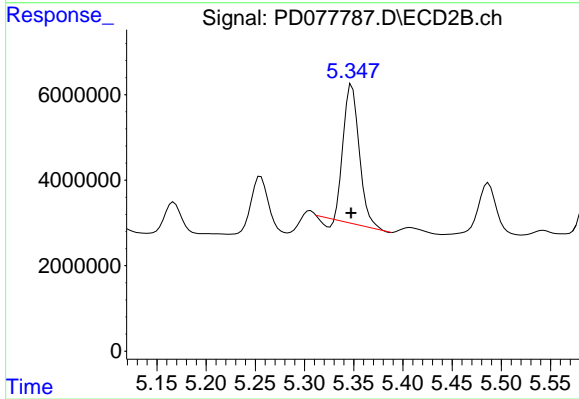
Time 5.05 5.10 5.15 5.20 5.25 5.30 5.35 5.40



#13 Dieldrin

R.T.: 6.354 min
 Delta R.T.: -0.002 min
 Response: 3729593
 Conc: 1.00 ng/ml

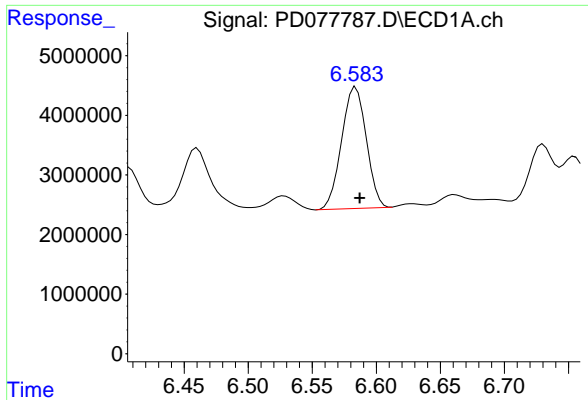
Time 6.25 6.30 6.35 6.40 6.45



#13 Dieldrin

R.T.: 5.348 min
 Delta R.T.: 0.000 min
 Response: 36139260
 Conc: 17.49 ng/ml

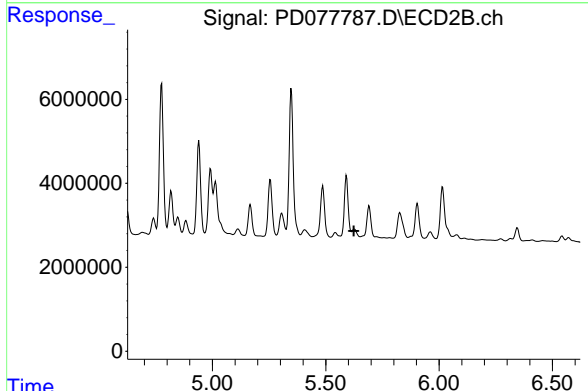
Time 5.15 5.20 5.25 5.30 5.35 5.40 5.45 5.50 5.55



#14 Endrin

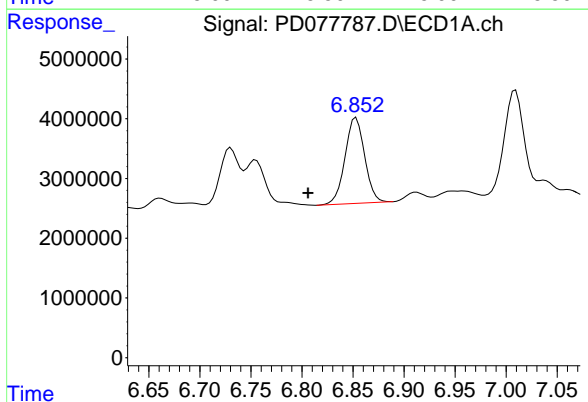
R.T.: 6.584 min
 Delta R.T.: -0.003 min
 Response: 27287508
 Conc: 8.84 ng/ml

Instrument :
 ECD_D
 ClientSampleId :



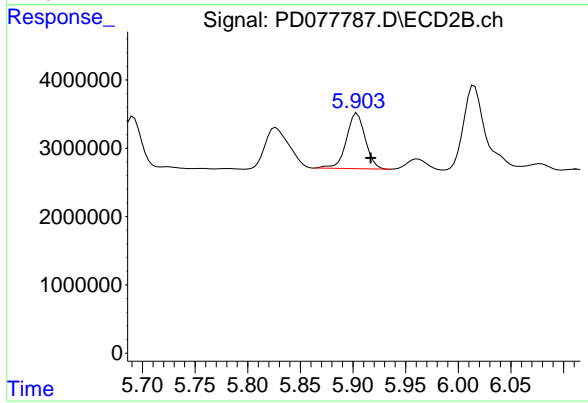
#14 Endrin

R.T.: 5.626 min
 Delta R.T.: 0.003 min
 Response: -6102554
 Conc: N.D.



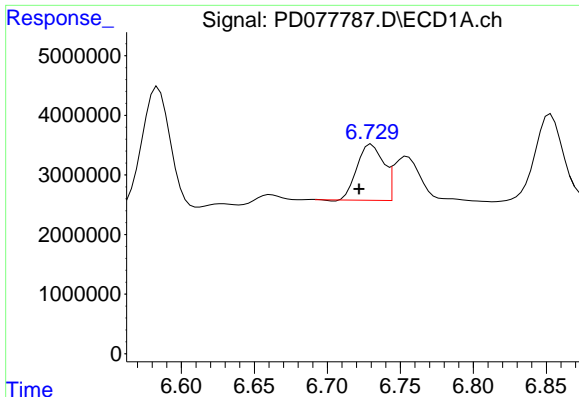
#15 Endosulfan II

R.T.: 6.853 min
 Delta R.T.: 0.047 min
 Response: 19238905
 Conc: 5.81 ng/ml



#15 Endosulfan II

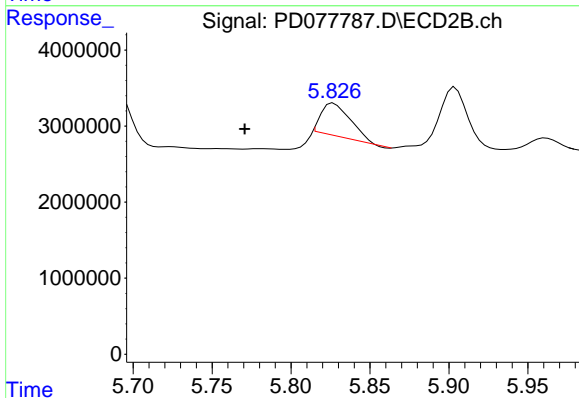
R.T.: 5.904 min
 Delta R.T.: -0.013 min
 Response: 10171081
 Conc: 5.62 ng/ml



#16 4,4'-DDD

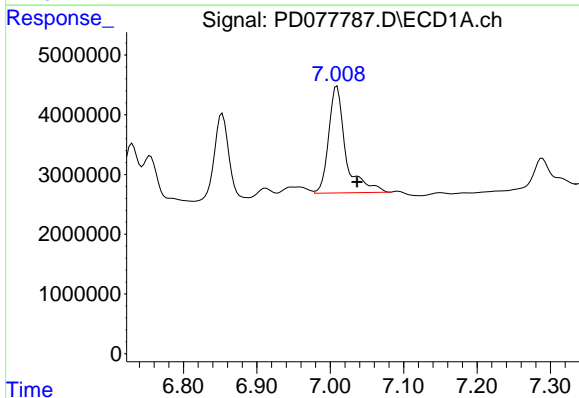
R.T.: 6.730 min
 Delta R.T.: 0.009 min
 Response: 11838016
 Conc: 4.45 ng/ml

Instrument :
 ECD_D
 ClientSampleId :



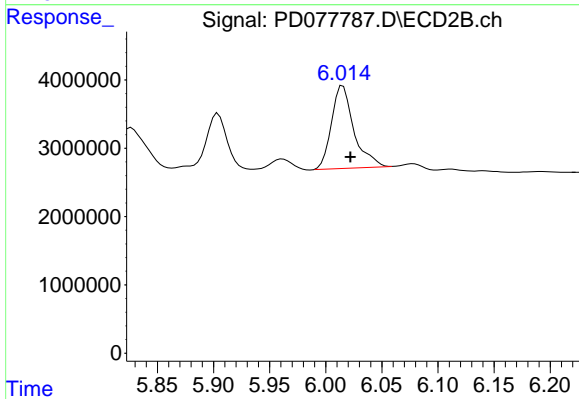
#16 4,4'-DDD

R.T.: 5.827 min
 Delta R.T.: 0.056 min
 Response: 5490631
 Conc: 4.08 ng/ml



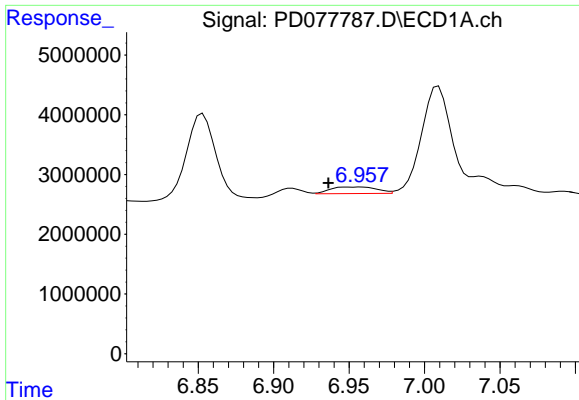
#17 4,4'-DDT

R.T.: 7.009 min
 Delta R.T.: -0.027 min
 Response: 28972532
 Conc: 10.57 ng/ml



#17 4,4'-DDT

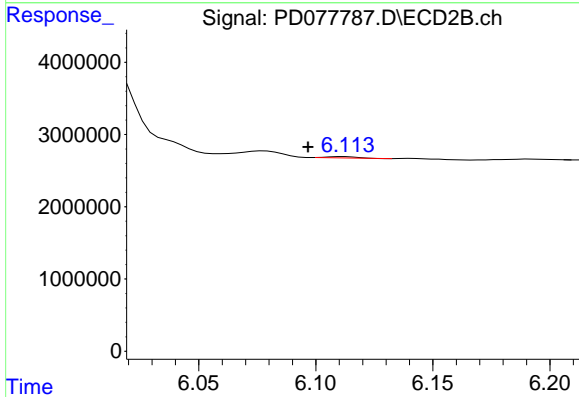
R.T.: 6.015 min
 Delta R.T.: -0.007 min
 Response: 16904735
 Conc: 11.96 ng/ml



#18 Endrin aldehyde

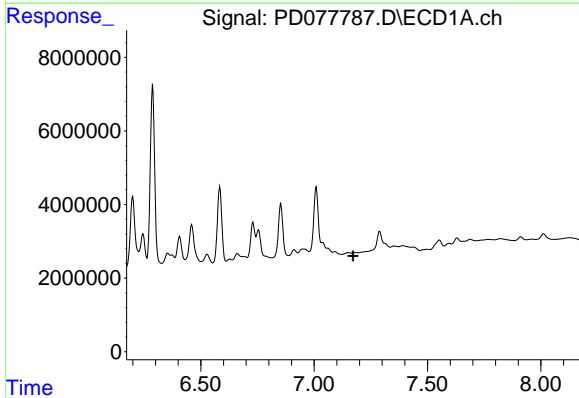
R.T.: 6.958 min
 Delta R.T.: 0.022 min
 Response: 2349704
 Conc: 0.90 ng/ml

Instrument :
 ECD_D
 ClientSampleId :



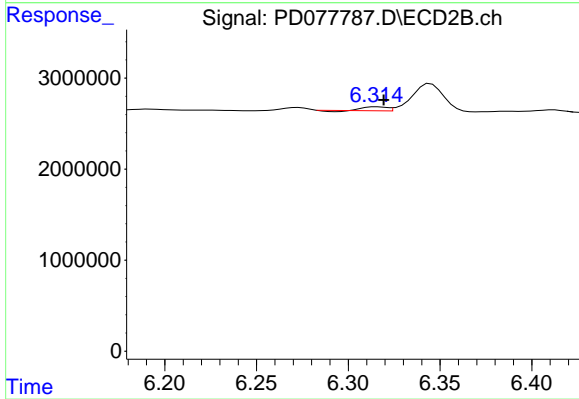
#18 Endrin aldehyde

R.T.: 6.112 min
 Delta R.T.: 0.015 min
 Response: 166498
 Conc: 0.12 ng/ml



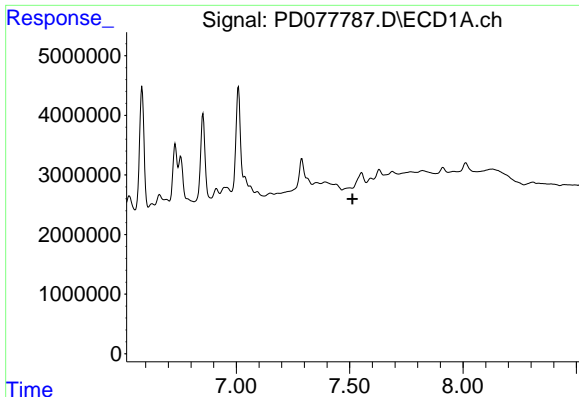
#19 Endosulfan Sulfate

R.T.: 0.000 min
 Exp R.T. : 7.172 min
 Response: 0
 Conc: N.D.



#19 Endosulfan Sulfate

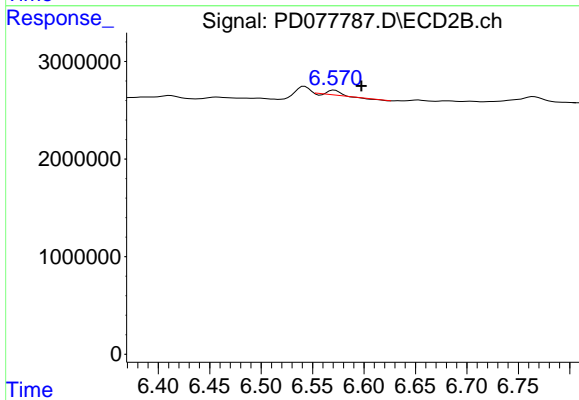
R.T.: 6.315 min
 Delta R.T.: -0.004 min
 Response: 354684
 Conc: 0.21 ng/ml



#20 Methoxychlor

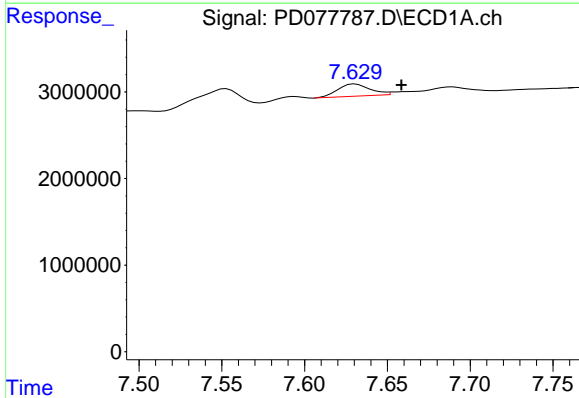
R.T.: 7.553 min
 Delta R.T.: 0.040 min
 Response: -1349820
 Conc: N.D.

Instrument :
 ECD_D
 ClientSampleId :



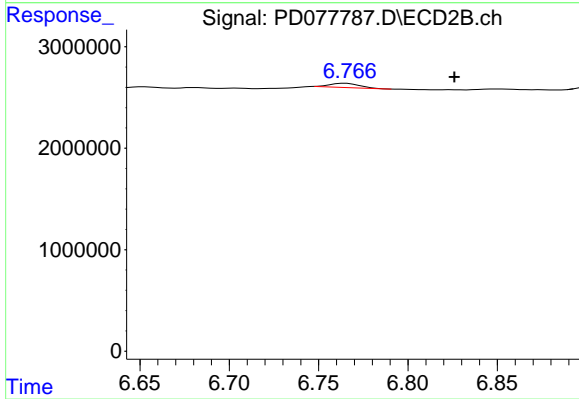
#20 Methoxychlor

R.T.: 6.571 min
 Delta R.T.: -0.026 min
 Response: 317157
 Conc: 0.41 ng/ml



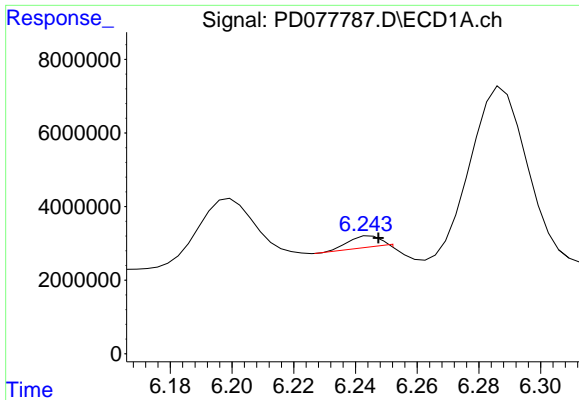
#21 Endrin ketone

R.T.: 7.630 min
 Delta R.T.: -0.028 min
 Response: 1905603
 Conc: 0.55 ng/ml



#21 Endrin ketone

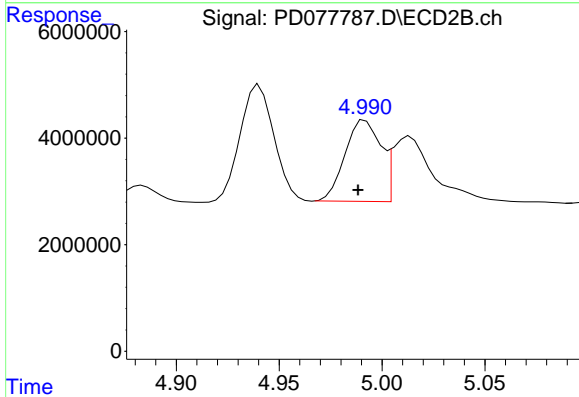
R.T.: 6.765 min
 Delta R.T.: -0.061 min
 Response: 452812
 Conc: 0.24 ng/ml



#22 Toxaphene-1

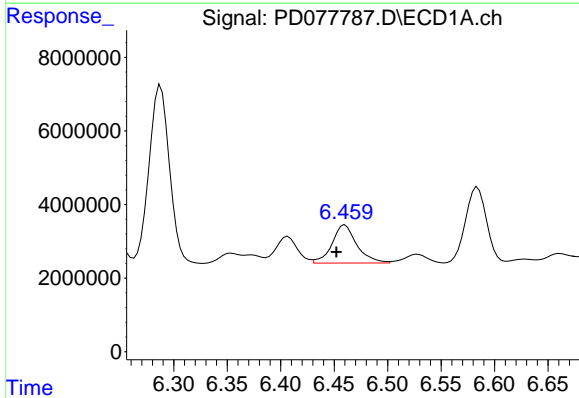
R.T.: 6.245 min
 Delta R.T.: -0.002 min
 Response: 2610137
 Conc: 97.82 ng/ml

Instrument :
 ECD_D
 ClientSampleId :



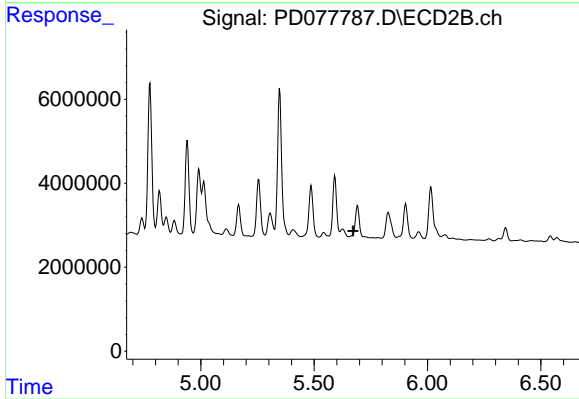
#22 Toxaphene-1

R.T.: 4.992 min
 Delta R.T.: 0.003 min
 Response: 18363433
 Conc: 1759.32 ng/ml



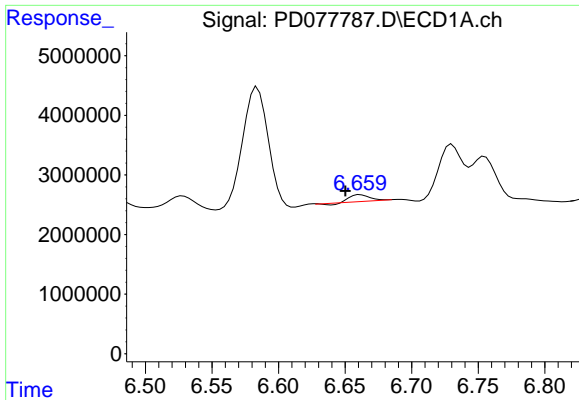
#23 Toxaphene-2

R.T.: 6.460 min
 Delta R.T.: 0.008 min
 Response: 16758653
 Conc: 510.94 ng/ml



#23 Toxaphene-2

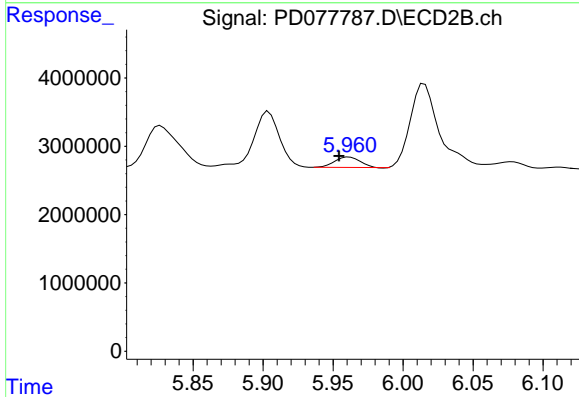
R.T.: 5.691 min
 Delta R.T.: 0.020 min
 Response: -72182
 Conc: N.D.



#24 Toxaphene-3

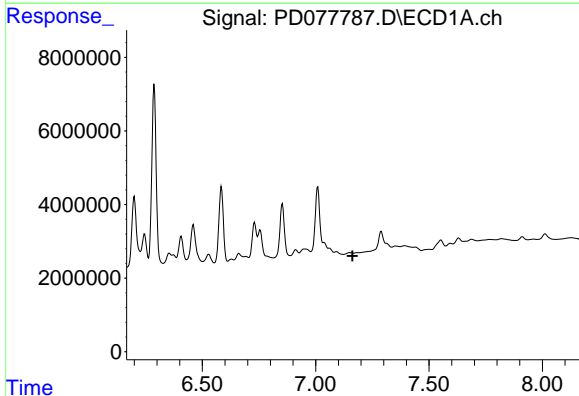
R.T.: 6.661 min
 Delta R.T.: 0.011 min
 Response: 1167169
 Conc: 50.56 ng/ml

Instrument :
 ECD_D
 ClientSampleId :



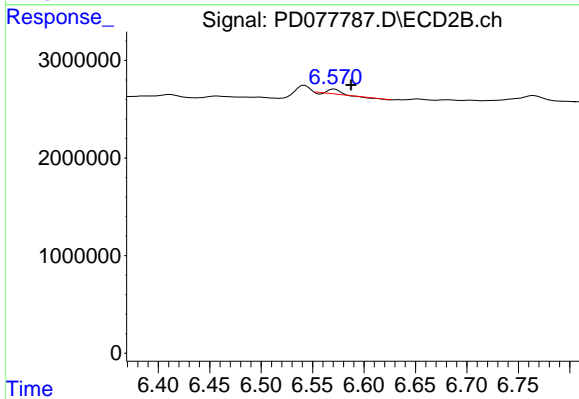
#24 Toxaphene-3

R.T.: 5.961 min
 Delta R.T.: 0.007 min
 Response: 1715081
 Conc: 125.76 ng/ml



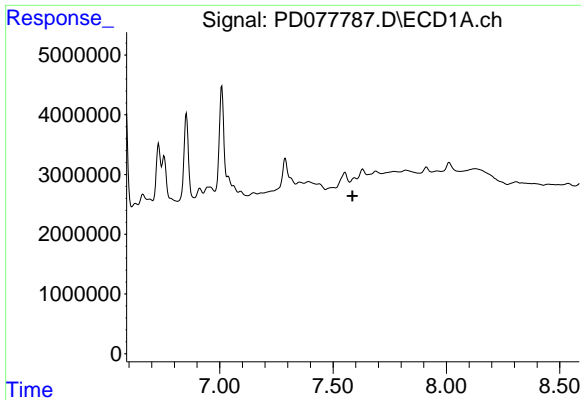
#25 Toxaphene-4

R.T.: 0.000 min
 Exp R.T. : 7.163 min
 Response: 0
 Conc: N.D.



#25 Toxaphene-4

R.T.: 6.571 min
 Delta R.T.: -0.016 min
 Response: 317157
 Conc: 8.22 ng/ml

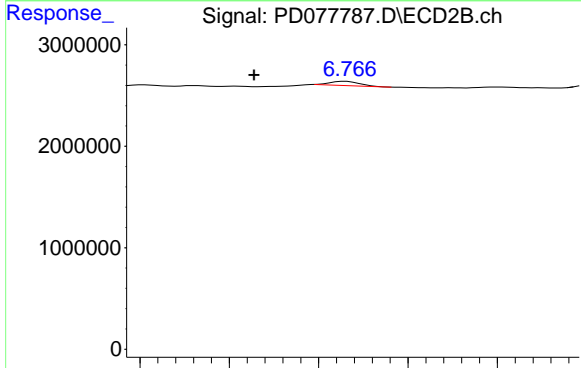


#26 Toxaphene-5

R.T.: 7.553 min
 Delta R.T.: -0.033 min
 Response: -1349820
 Conc: N.D.

Instrument :
 ECD_D
 ClientSampleId :

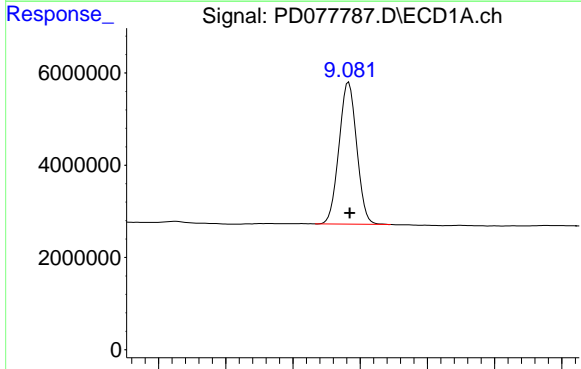
Time



#26 Toxaphene-5

R.T.: 6.765 min
 Delta R.T.: 0.051 min
 Response: 452812
 Conc: 8.16 ng/ml

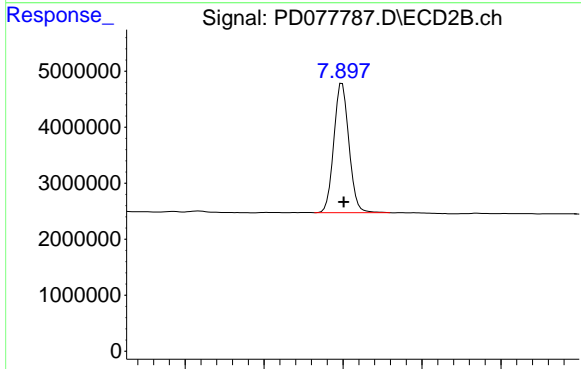
Time



#27 Decachlorobiphenyl

R.T.: 9.083 min
 Delta R.T.: -0.002 min
 Response: 56221135
 Conc: 18.00 ng/ml

Time



#27 Decachlorobiphenyl

R.T.: 7.899 min
 Delta R.T.: -0.002 min
 Response: 30734476
 Conc: 18.98 ng/ml

Time