

Data Path : Z:\pestpcbsrv\HPCHEM1\ECD_D\Data\PD090923\
 Data File : PD077772.D
 Signal(s) : Signal #1: ECD1A.ch Signal #2: ECD2B.ch
 Acq On : 08 Sep 2023 10:35
 Operator : AR\AJ
 Sample : 04234-03MS
 Misc :
 ALS Vial : 9 Sample Multiplier: 1

Instrument :
 ECD_D
 ClientSampleId :
 YBY14MS

Integration File signal 1: autoint1.e
 Integration File signal 2: autoint2.e
 Quant Time: Sep 08 22:47:47 2023
 Quant Method : Z:\pestpcbsrv\HPCHEM1\ECD_D\Method\PD090623CLP.M
 Quant Title : GC Extractables
 QLast Update : Wed Sep 06 16:40:06 2023
 Response via : Initial Calibration
 Integrator: ChemStation

Volume Inj. : 1 µl
 Signal #1 Phase : ZB-MR2 Signal #2 Phase: ZB-MR2
 Signal #1 Info : 30M x 0.32mm x0.5 Signal #2 Info : 30M x 0.32mm x 0.25µm

Compound	RT#1	RT#2	Resp#1	Resp#2	ng/ml	ng/ml

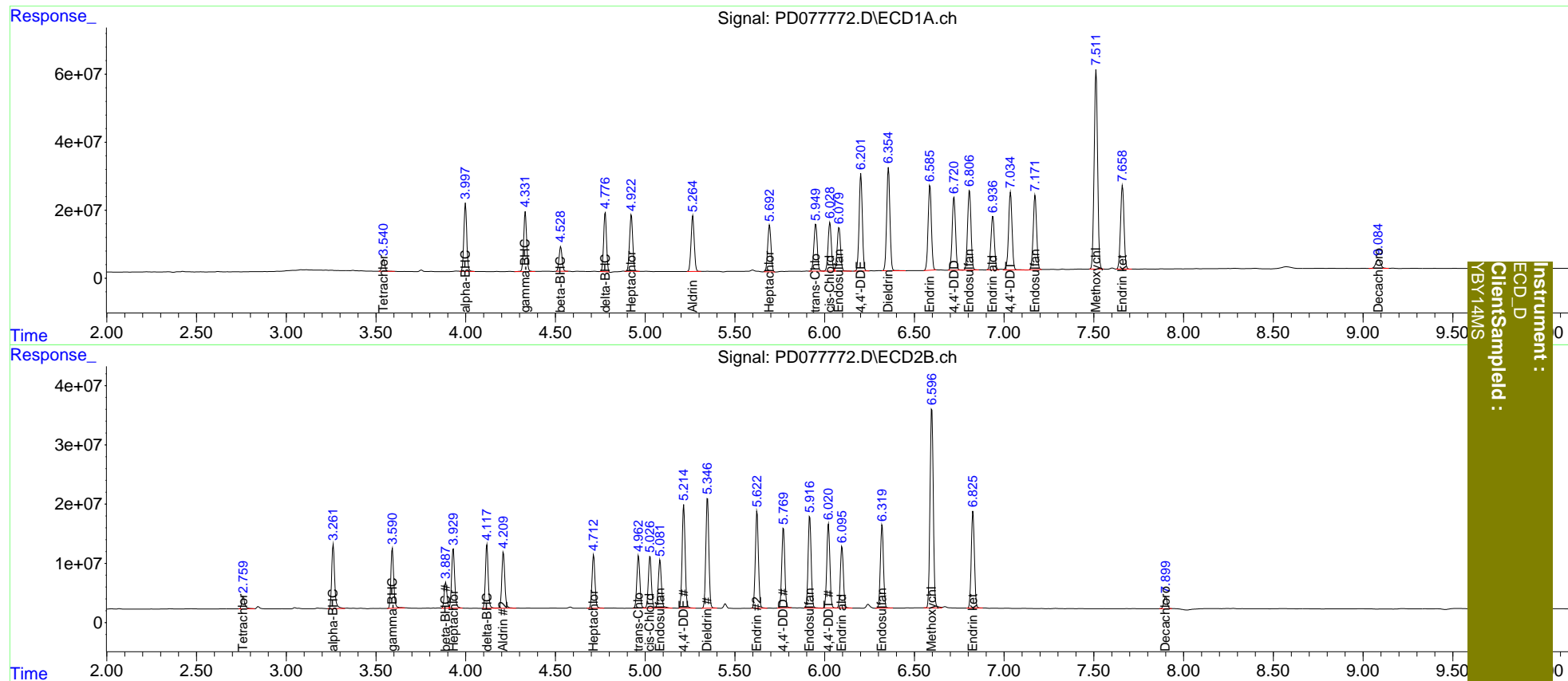
System Monitoring Compounds						
1) SA Tetrachlo...	3.542	2.760	40123209	24269150	15.811	16.422
27) SA Decachlor...	9.085	7.900	49480157	26154326	15.839	16.149
Target Compounds						
2) A alpha-BHC	3.999	3.262	222.3E6	122.3E6	51.911	53.976
3) MA gamma-BHC...	4.332	3.591	203.1E6	111.7E6	50.241	51.717
4) MA Heptachlor	4.923	3.931	206.3E6	117.3E6	49.372	52.779
5) MB Aldrin	5.265	4.210	202.1E6	111.5E6	48.401	49.732
6) B beta-BHC	4.530	3.889	84144787	46538600	45.801	47.100
7) B delta-BHC	4.778	4.118	191.7E6	115.5E6	47.733	51.820
8) B Heptachlo...	5.693	4.713	175.0E6	104.7E6	45.281	49.827
9) A Endosulfan I	6.080	5.083	170.4E6	98207687	50.759	54.713
10) B trans-Chl...	5.951	4.963	178.6E6	102.7E6	47.959	51.449
11) B cis-Chlor...	6.029	5.027	182.9E6	102.9E6	47.451	50.302
12) B 4,4'-DDE	6.202	5.215	355.2E6	205.0E6	100.199	107.911
13) MA Dieldrin	6.356	5.347	381.9E6	219.9E6	102.020	106.427
14) MA Endrin	6.587	5.623	317.9E6	194.9E6	103.046	106.579
15) B Endosulfa...	6.807	5.917	310.8E6	184.6E6	93.863	102.003
16) A 4,4'-DDD	6.721	5.771	279.0E6	158.0E6	104.889	117.370
17) MA 4,4'-DDT	7.036	6.021	310.2E6	171.5E6	113.220	121.364
18) B Endrin al...	6.937	6.097	212.3E6	123.3E6	81.718	87.678
19) B Endosulfa...	7.173	6.320	288.3E6	169.1E6	95.129	102.322
20) A Methoxychlor	7.512	6.597	781.0E6	426.3E6	500.734	546.284
21) B Endrin ke...	7.660	6.827	331.9E6	198.2E6	96.385	103.453

(f)=RT Delta > 1/2 Window (#)=Amounts differ by > 25% (m)=manual int.

Data Path : Z:\pestpcbsrv\HPCHEM1\ECD_D\Data\PD090923\
 Data File : PD077772.D
 Signal(s) : Signal #1: ECD1A.ch Signal #2: ECD2B.ch
 Acq On : 08 Sep 2023 10:35
 Operator : AR\AJ
 Sample : 04234-03MS
 Misc :
 ALS Vial : 9 Sample Multiplier: 1

Integration File signal 1: autoint1.e
 Integration File signal 2: autoint2.e
 Quant Time: Sep 08 22:47:47 2023
 Quant Method : Z:\pestpcbsrv\HPCHEM1\ECD_D\Method\PD090623CLP.M
 Quant Title : GC Extractables
 QLast Update : Wed Sep 06 16:40:06 2023
 Response via : Initial Calibration
 Integrator: ChemStation

Volume Inj. : 1 µl
 Signal #1 Phase : ZB-MR1 Signal #2 Phase: ZB-MR2
 Signal #1 Info : 30M x 0.32mm x0.5 Signal #2 Info : 30M x 0.32mm x 0.25µm



Instrument :
 ECD_D
 Client/Sample :
 YBY14MS
 04234-03MS