

Data Path : Z:\pestpcbsrv\HPCHEM1\ECD_D\Data\PD090923\
 Data File : PD077787.D
 Signal(s) : Signal #1: ECD1A.ch Signal #2: ECD2B.ch
 Acq On : 08 Sep 2023 15:32
 Operator : AR\AJ
 Sample : 04306-01
 Misc :
 ALS Vial : 23 Sample Multiplier: 1

Instrument :
 ECD_D
 ClientSampleId :
 BH4E5

Manual Integrations
 APPROVED

Reviewed By :Abdul Mirza 09/11/2023
 Supervised By :Ankita Jodhani 09/11/2023

Integration File signal 1: autoint1.e
 Integration File signal 2: autoint2.e
 Quant Time: Sep 09 05:29:41 2023
 Quant Method : Z:\pestpcbsrv\HPCHEM1\ECD_D\Method\PD090623CLP.M
 Quant Title : GC Extractables
 QLast Update : Wed Sep 06 16:40:06 2023
 Response via : Initial Calibration
 Integrator: ChemStation

Volume Inj. : 1 µl
 Signal #1 Phase : ZB-MR1 Signal #2 Phase: ZB-MR2
 Signal #1 Info : 30M x 0.32mm x0.5 Signal #2 Info : 30M x 0.32mm x 0.25µm

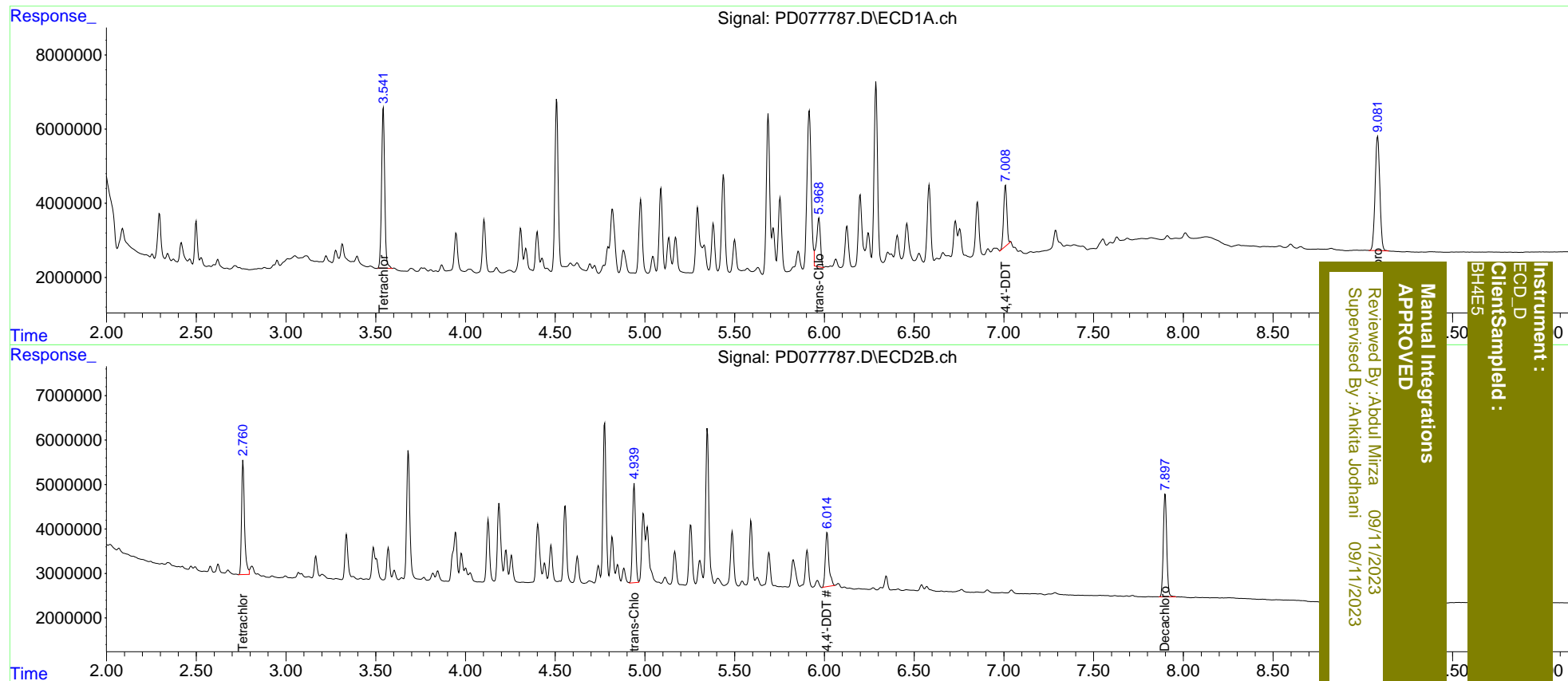
Compound	RT#1	RT#2	Resp#1	Resp#2	ng/ml	ng/ml
System Monitoring Compounds						
1) SA Tetrachlo...	3.542	2.761	52624318	28984784	20.737	19.612
27) SA Decachlor...	9.083	7.899	56221135	30734476	17.997	18.978
Target Compounds						
10) B trans-Chl...	5.968	4.939	20229705	25749005	5.433m	12.894m#
17) MA 4,4'-DDT	7.008	6.015	20796006	16904735	7.591m	11.961 #

(f)=RT Delta > 1/2 Window (#)=Amounts differ by > 25% (m)=manual int.

Data Path : Z:\pestpcbsrv\HPCHEM1\ECD_D\Data\PD090923\
 Data File : PD077787.D
 Signal(s) : Signal #1: ECD1A.ch Signal #2: ECD2B.ch
 Acq On : 08 Sep 2023 15:32
 Operator : AR\AJ
 Sample : 04306-01
 Misc :
 ALS Vial : 23 Sample Multiplier: 1

Integration File signal 1: autoint1.e
 Integration File signal 2: autoint2.e
 Quant Time: Sep 09 05:29:41 2023
 Quant Method : Z:\pestpcbsrv\HPCHEM1\ECD_D\Method\PD090623CLP.M
 Quant Title : GC Extractables
 QLast Update : Wed Sep 06 16:40:06 2023
 Response via : Initial Calibration
 Integrator: ChemStation

Volume Inj. : 1 µl
 Signal #1 Phase : ZB-MR1 Signal #2 Phase: ZB-MR2
 Signal #1 Info : 30M x 0.32mm x0.5 Signal #2 Info : 30M x 0.32mm x 0.25µm



Instrument : ECD_D
 ClientSampleId : BH4E5
 Manual Integrations APPROVED
 Reviewed By :Abdul Mirza 09/11/2023
 Supervised By :Ankita Jodhani 09/11/2023