

Data Path : Z:\pestpcbsrv\HPCHEM1\ECD\_D\Data\PD090923\  
 Data File : PD077812.D  
 Signal(s) : Signal #1: ECD1A.ch Signal #2: ECD2B.ch  
 Acq On : 08 Sep 2023 21:18  
 Operator : AR\AJ  
 Sample : 04280-01  
 Misc :  
 ALS Vial : 46 Sample Multiplier: 1

Instrument :  
 ECD\_D  
 ClientSampleId :  
 JLAD0

Integration File signal 1: autoint1.e  
 Integration File signal 2: autoint2.e  
 Quant Time: Sep 08 23:03:00 2023  
 Quant Method : Z:\pestpcbsrv\HPCHEM1\ECD\_D\Method\PD090623CLP.M  
 Quant Title : GC Extractables  
 QLast Update : Wed Sep 06 16:40:06 2023  
 Response via : Initial Calibration  
 Integrator: ChemStation

Volume Inj. : 1 µl  
 Signal #1 Phase : ZB-MR1 Signal #2 Phase: ZB-MR2  
 Signal #1 Info : 30M x 0.32mm x0.5 Signal #2 Info : 30M x 0.32mm x 0.25µm

Compound	RT#1	RT#2	Resp#1	Resp#2	ng/ml	ng/ml
-----						
System Monitoring Compounds						
1) SA Tetrachlo...	3.542	2.761	54614858	33178905	21.521	22.450
27) SA Decachlor...	9.080	7.897	74891743	40071551	23.974	24.743

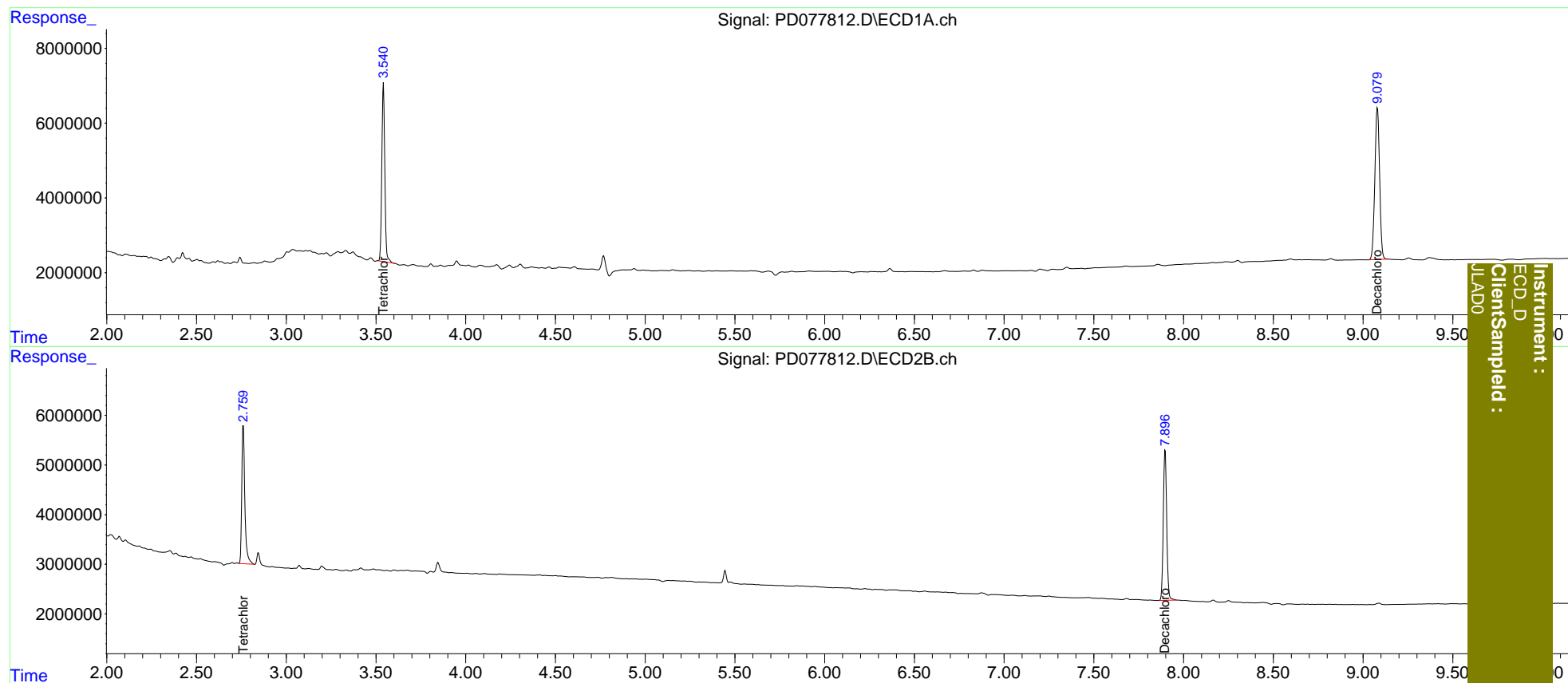
Target Compounds

(f)=RT Delta > 1/2 Window (#)=Amounts differ by > 25% (m)=manual int.

Data Path : Z:\pestpcbsrv\HPCHEM1\ECD\_D\Data\PD090923\  
Data File : PD077812.D  
Signal(s) : Signal #1: ECD1A.ch Signal #2: ECD2B.ch  
Acq On : 08 Sep 2023 21:18  
Operator : AR\AJ  
Sample : 04280-01  
Misc :  
ALS Vial : 46 Sample Multiplier: 1

Integration File signal 1: autoint1.e  
Integration File signal 2: autoint2.e  
Quant Time: Sep 08 23:03:00 2023  
Quant Method : Z:\pestpcbsrv\HPCHEM1\ECD\_D\Method\PD090623CLP.M  
Quant Title : GC Extractables  
QLast Update : Wed Sep 06 16:40:06 2023  
Response via : Initial Calibration  
Integrator: ChemStation

Volume Inj. : 1 µl  
Signal #1 Phase : ZB-MR1 Signal #2 Phase: ZB-MR2  
Signal #1 Info : 30M x 0.32mm x 0.5 Signal #2 Info : 30M x 0.32mm x 0.25µm



Instrument :  
ECD\_D  
ClientSampled :  
JLAD0