

Data Path : Z:\pestpcbsrv\HPCHEM1\ECD\_D\Data\PD091020\  
 Data File : PD059150.D  
 Signal(s) : Signal #1: ECD1A.ch Signal #2: ECD2B.ch  
 Acq On : 10 Sep 2020 14:38  
 Operator : DD\AJ  
 Sample : L3855-17  
 Misc :  
 ALS Vial : 22 Sample Multiplier: 1

Instrument :  
 ECD\_D  
 ClientSampleId :

Integration File signal 1: autoint1.e  
 Integration File signal 2: autoint2.e  
 Quant Time: Sep 11 04:27:45 2020  
 Quant Method : Z:\pestpcbsrv\HPCHEM1\ECD\_D\Method\PD090420CLP.M  
 Quant Title : GC Extractables  
 QLast Update : Sat Sep 05 02:06:36 2020  
 Response via : Initial Calibration  
 Integrator: ChemStation

Volume Inj. : 1 µl  
 Signal #1 Phase : ZB-MR2 Signal #2 Phase: ZB-MR1  
 Signal #1 Info : 30M x 0.32mm x0.2 Signal #2 Info : 30M x 0.32mm x 0.50µm

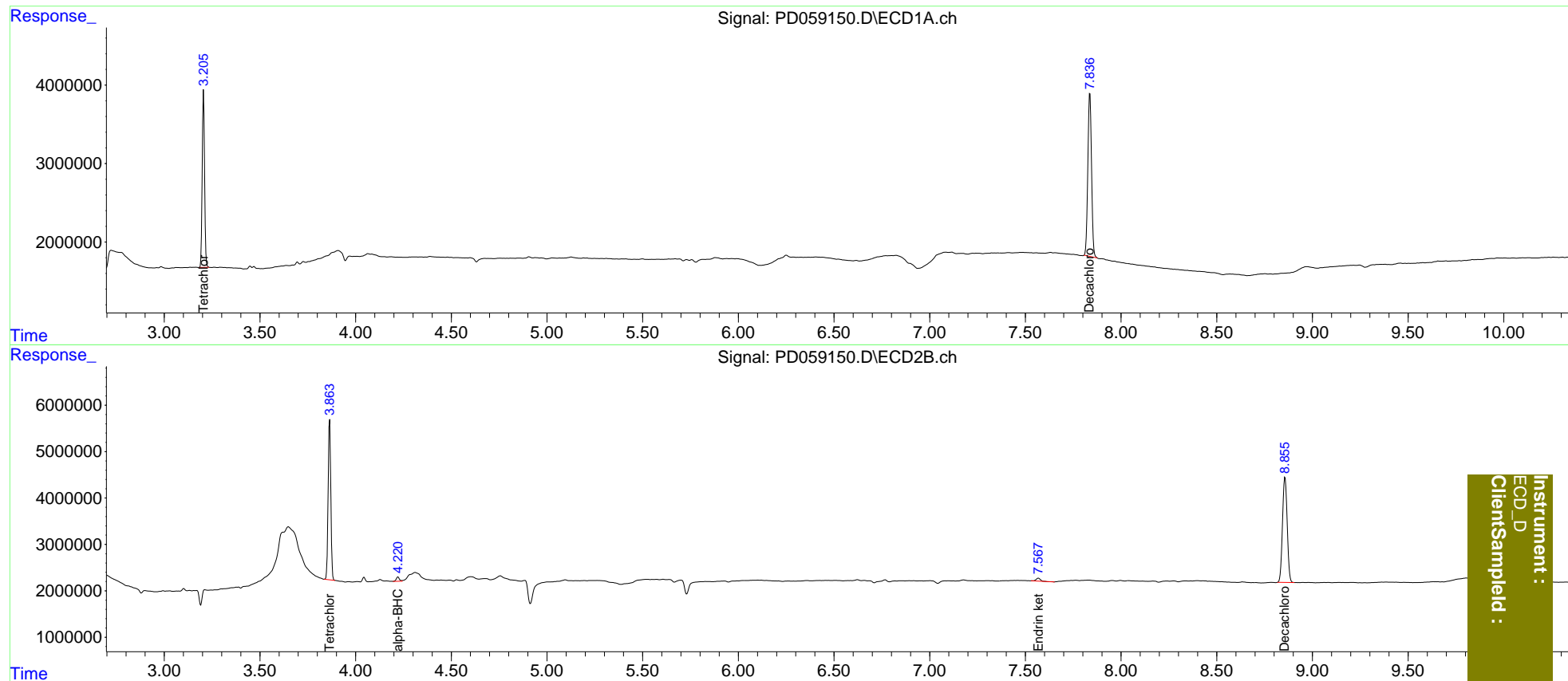
Compound	RT#1	RT#2	Resp#1	Resp#2	ng/ml	ng/ml
System Monitoring Compounds						
1) SA Tetrachlo...	3.206	3.865	19349606	33515579	19.196	20.452
27) SA Decachlor...	7.837	8.857	27902747	38740062	28.471	28.805
Target Compounds						
2) A alpha-BHC	0.000	4.222f	0	1057565	N.D.	0.436
15) B Endosulfa...	0.000	6.767	0	123466	N.D.	<MDL
21) B Endrin ke...	0.000	7.568	0	972276	N.D.	0.581

(f)=RT Delta > 1/2 Window (#)=Amounts differ by > 25% (m)=manual int.

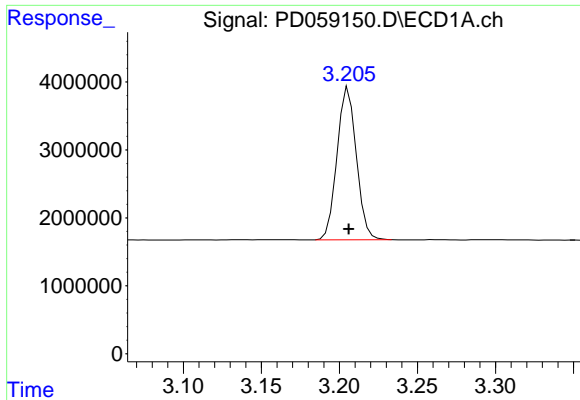
Data Path : Z:\pestpcbsrv\HPCHEM1\ECD\_D\Data\PD091020\  
 Data File : PD059150.D  
 Signal(s) : Signal #1: ECD1A.ch Signal #2: ECD2B.ch  
 Acq On : 10 Sep 2020 14:38  
 Operator : DD\AJ  
 Sample : L3855-17  
 Misc :  
 ALS Vial : 22 Sample Multiplier: 1

Integration File signal 1: autoint1.e  
 Integration File signal 2: autoint2.e  
 Quant Time: Sep 11 04:27:45 2020  
 Quant Method : Z:\pestpcbsrv\HPCHEM1\ECD\_D\Method\PD090420CLP.M  
 Quant Title : GC Extractables  
 QLast Update : Sat Sep 05 02:06:36 2020  
 Response via : Initial Calibration  
 Integrator: ChemStation

Volume Inj. : 1 µl  
 Signal #1 Phase : ZB-MR2 Signal #2 Phase: ZB-MR1  
 Signal #1 Info : 30M x 0.32mm x0.2 Signal #2 Info : 30M x 0.32mm x 0.50µm

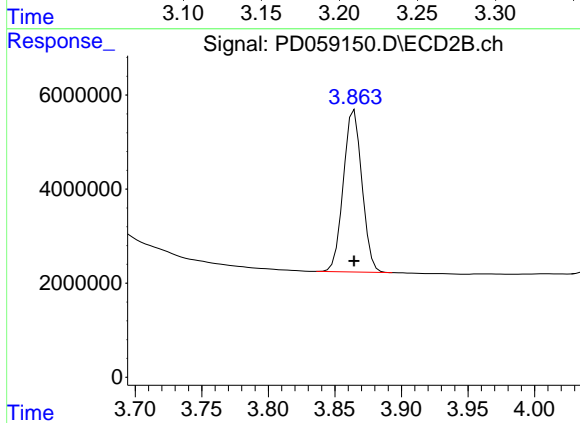


Instrument :  
 ECD\_D  
 ClientSampleId :

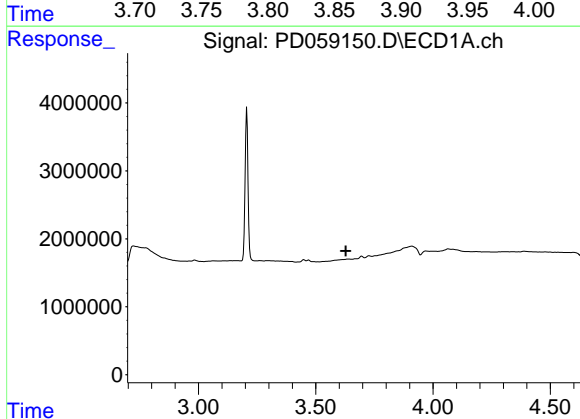


#1 Tetrachloro-m-xylene  
 R.T.: 3.206 min  
 Delta R.T.: 0.000 min  
 Response: 19349606  
 Conc: 19.20 ng/ml

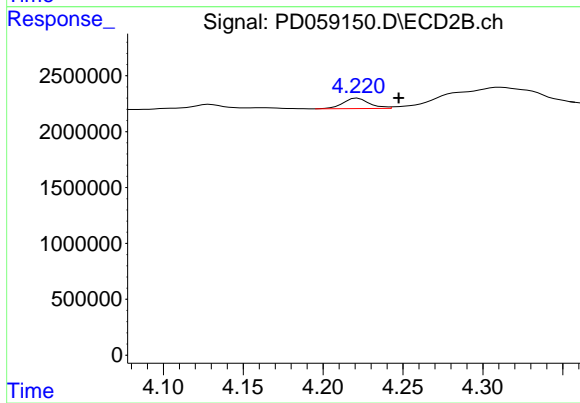
Instrument :  
 ECD\_D  
 ClientSampleId :



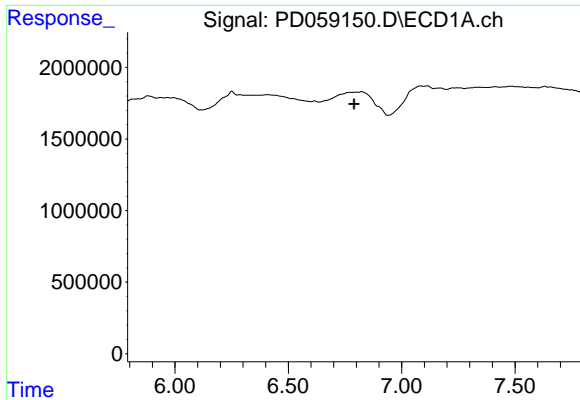
#1 Tetrachloro-m-xylene  
 R.T.: 3.865 min  
 Delta R.T.: 0.000 min  
 Response: 33515579  
 Conc: 20.45 ng/ml



#2 alpha-BHC  
 R.T.: 0.000 min  
 Exp R.T. : 3.628 min  
 Response: 0  
 Conc: N.D.



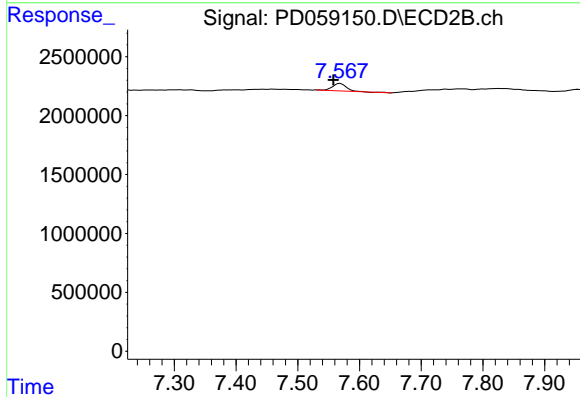
#2 alpha-BHC  
 R.T.: 4.222 min  
 Delta R.T.: -0.026 min  
 Response: 1057565  
 Conc: 0.44 ng/ml



#21 Endrin ketone

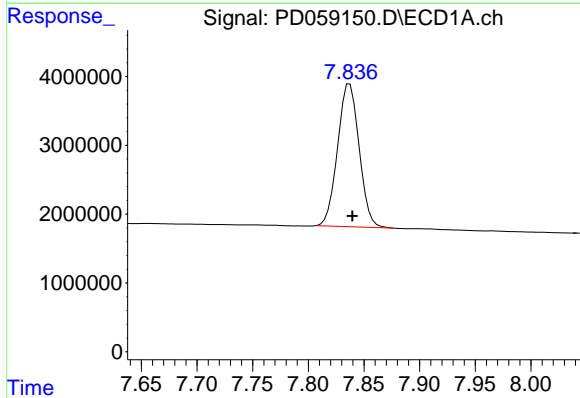
R.T.: 0.000 min  
 Exp R.T.: 6.790 min  
 Response: 0  
 Conc: N.D.

Instrument :  
 ECD\_D  
 ClientSampleId :



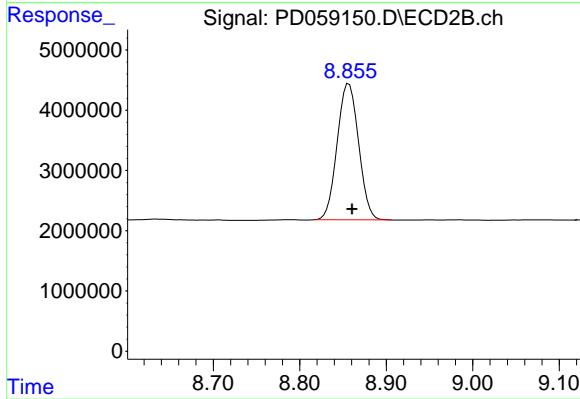
#21 Endrin ketone

R.T.: 7.568 min  
 Delta R.T.: 0.010 min  
 Response: 972276  
 Conc: 0.58 ng/ml



#27 Decachlorobiphenyl

R.T.: 7.837 min  
 Delta R.T.: -0.002 min  
 Response: 27902747  
 Conc: 28.47 ng/ml



#27 Decachlorobiphenyl

R.T.: 8.857 min  
 Delta R.T.: -0.004 min  
 Response: 38740062  
 Conc: 28.80 ng/ml