

Data Path : Z:\pestpcbsrv\HPCHEM1\ECD_D\Data\PD091021\
 Data File : PD065663.D
 Signal(s) : Signal #1: ECD1A.ch Signal #2: ECD2B.ch
 Acq On : 10 Sep 2021 14:25
 Operator : AR\AJ
 Sample : M3681-04
 Misc :
 ALS Vial : 17 Sample Multiplier: 1

Instrument :
 ECD_D
 ClientSampleId :
 WATER-PIT

Integration File signal 1: autoint1.e
 Integration File signal 2: autoint2.e
 Quant Time: Sep 13 05:41:14 2021
 Quant Method : Z:\pestpcbsrv\HPCHEM1\ECD_D\Method\PD090421.M
 Quant Title : GC Extractables
 QLast Update : Thu Sep 09 15:08:21 2021
 Response via : Initial Calibration
 Integrator: ChemStation

Volume Inj. : 2 µl
 Signal #1 Phase : ZB-MR2 Signal #2 Phase: ZB-MR1
 Signal #1 Info : 30M x 0.32mm x0.2 Signal #2 Info : 30M x 0.32mm x 0.50µm

Compound	RT#1	RT#2	Resp#1	Resp#2	ng/ml	ng/ml

System Monitoring Compounds						
1) SA Tetrachlo...	3.496	4.012	15326511	127.7E6	15.639	17.429
28) SA Decachlor...	8.242	9.087	12888404	41604958	7.476	7.797
Target Compounds						
13) MA Dieldrin	5.790	6.509	1377101	6756541	0.890	0.896

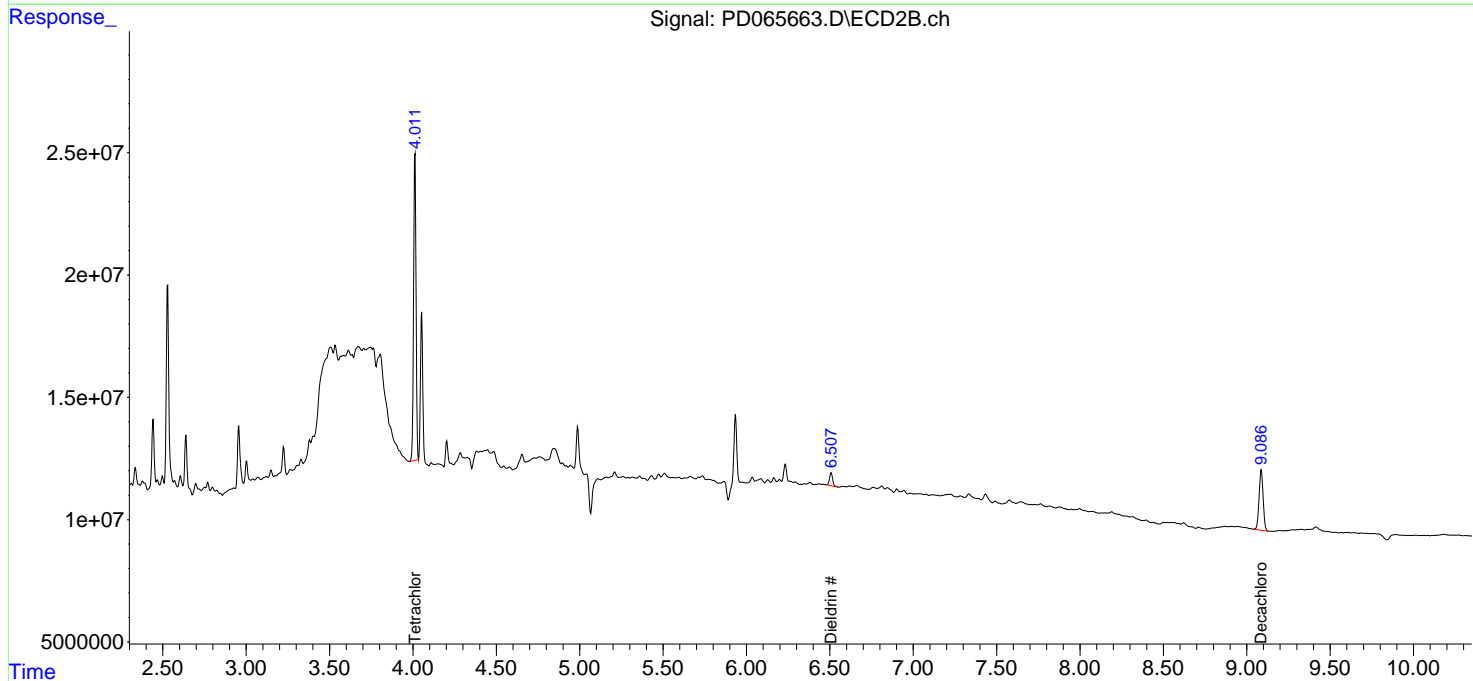
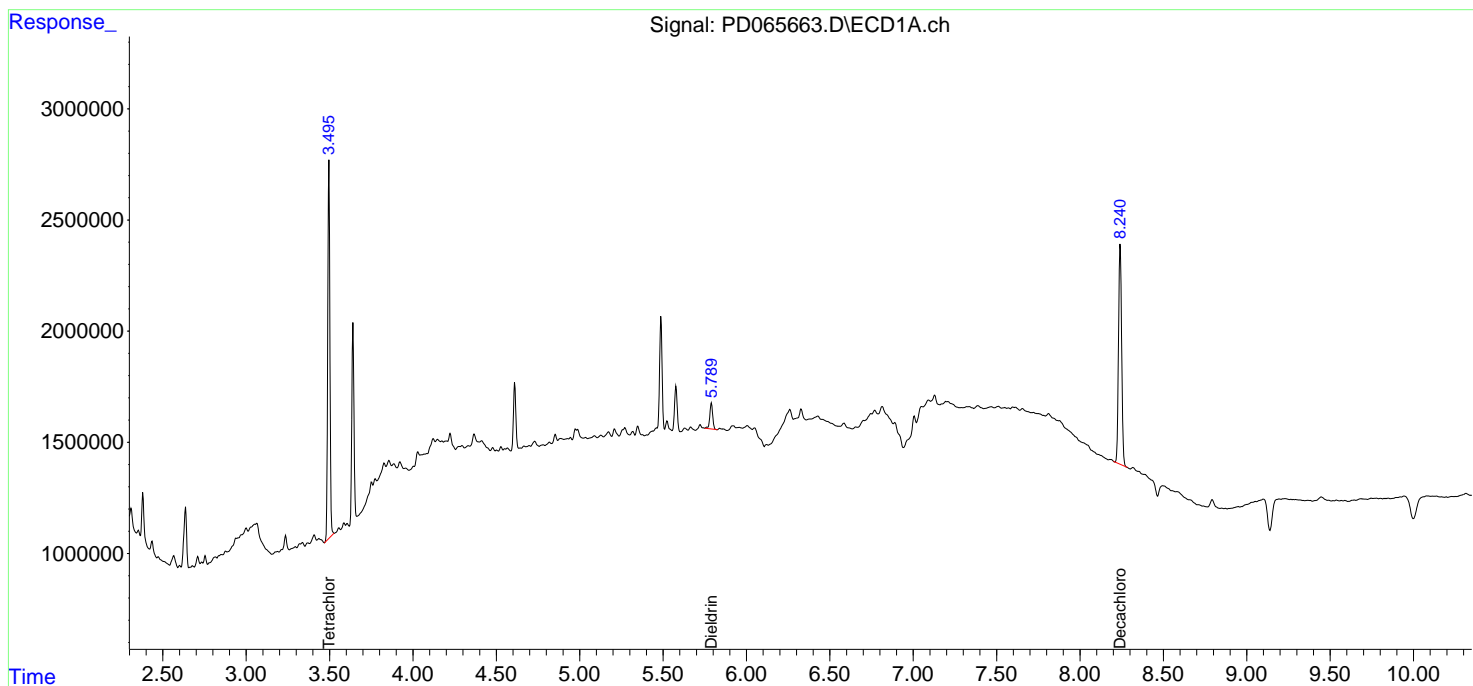
(f)=RT Delta > 1/2 Window (#)=Amounts differ by > 25% (m)=manual int.

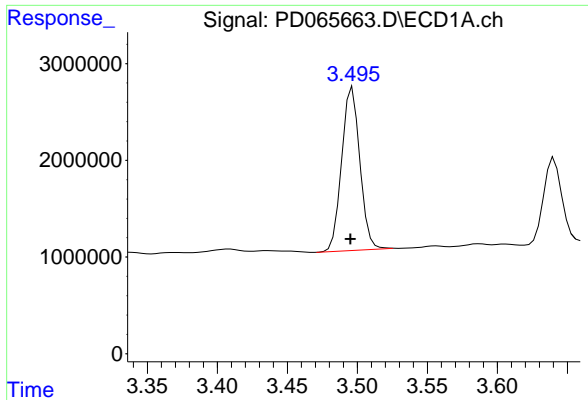
Data Path : Z:\pestpcbsrv\HPCHEM1\ECD_D\Data\PD091021\
 Data File : PD065663.D
 Signal(s) : Signal #1: ECD1A.ch Signal #2: ECD2B.ch
 Acq On : 10 Sep 2021 14:25
 Operator : AR\AJ
 Sample : M3681-04
 Misc :
 ALS Vial : 17 Sample Multiplier: 1

Instrument :
 ECD_D
 ClientSampled :
 WATER-PIT

Integration File signal 1: autoint1.e
 Integration File signal 2: autoint2.e
 Quant Time: Sep 13 05:41:14 2021
 Quant Method : Z:\pestpcbsrv\HPCHEM1\ECD_D\Method\PD090421.M
 Quant Title : GC Extractables
 QLast Update : Thu Sep 09 15:08:21 2021
 Response via : Initial Calibration
 Integrator: ChemStation

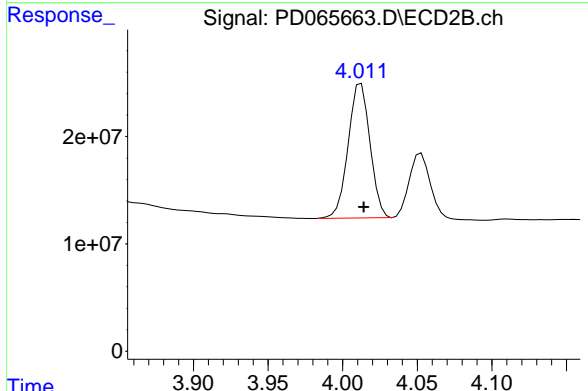
Volume Inj. : 2 µl
 Signal #1 Phase : ZB-MR2 Signal #2 Phase: ZB-MR1
 Signal #1 Info : 30M x 0.32mm x0.2 Signal #2 Info : 30M x 0.32mm x 0.50µm



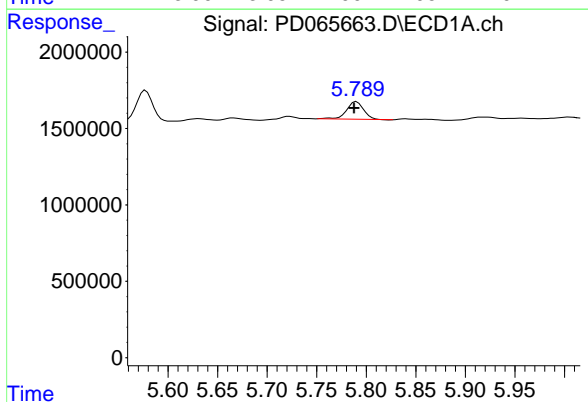


#1 Tetrachloro-m-xylene
 R.T.: 3.496 min
 Delta R.T.: 0.001 min
 Response: 15326511
 Conc: 15.64 ng/ml

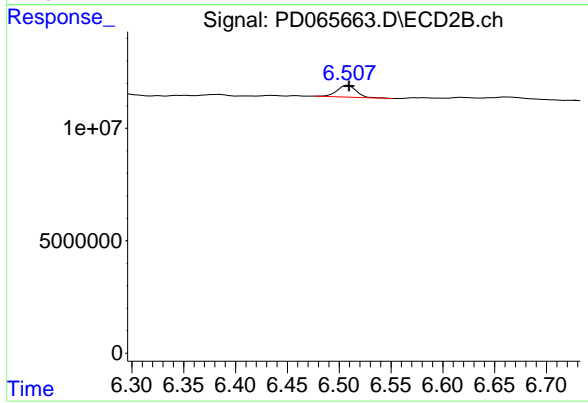
Instrument :
 ECD_D
 ClientSampleId :
 WATER-PIT



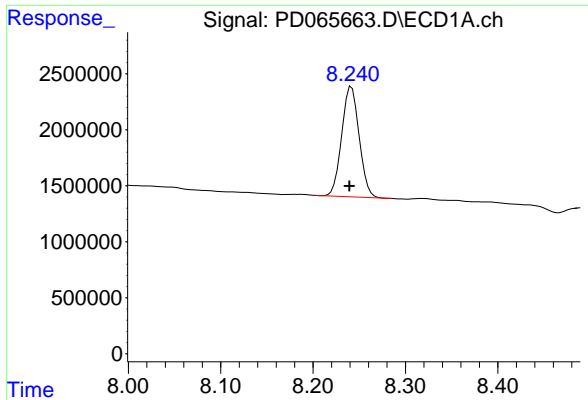
#1 Tetrachloro-m-xylene
 R.T.: 4.012 min
 Delta R.T.: -0.002 min
 Response: 127743964
 Conc: 17.43 ng/ml



#13 Dieldrin
 R.T.: 5.790 min
 Delta R.T.: 0.003 min
 Response: 1377101
 Conc: 0.89 ng/ml



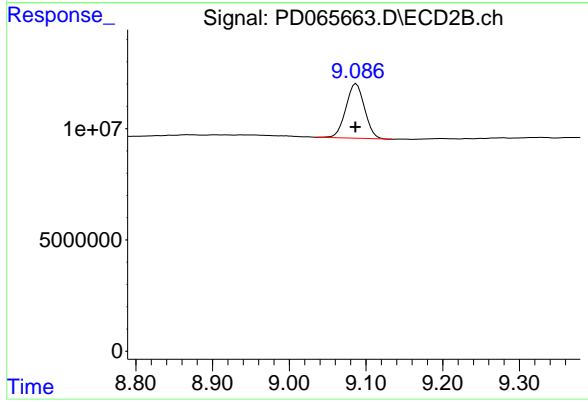
#13 Dieldrin
 R.T.: 6.509 min
 Delta R.T.: 0.000 min
 Response: 6756541
 Conc: 0.90 ng/ml



#28 Decachlorobiphenyl

R.T.: 8.242 min
Delta R.T.: 0.002 min
Response: 12888404
Conc: 7.48 ng/ml

Instrument :
ECD_D
ClientSampleId :
WATER-PIT



#28 Decachlorobiphenyl

R.T.: 9.087 min
Delta R.T.: 0.001 min
Response: 41604958
Conc: 7.80 ng/ml