

Data Path : Z:\pestpcbsrv\HPCHEM1\ECD_D\Data\PD091021\
 Data File : PD065670.D
 Signal(s) : Signal #1: ECD1A.ch Signal #2: ECD2B.ch
 Acq On : 10 Sep 2021 16:02
 Operator : AR\AJ
 Sample : PSTDCCC050
 Misc :
 ALS Vial : 4 Sample Multiplier: 1

Instrument :
 ECD_D
 ClientSampleId :
 PSTDCCC050

Integration File signal 1: autoint1.e
 Integration File signal 2: autoint2.e
 Quant Time: Sep 11 04:03:24 2021
 Quant Method : Z:\pestpcbsrv\HPCHEM1\ECD_D\Method\PD090421.M
 Quant Title : GC Extractables
 QLast Update : Thu Sep 09 15:08:21 2021
 Response via : Initial Calibration
 Integrator: ChemStation

Volume Inj. : 2 µl
 Signal #1 Phase : ZB-MR2 Signal #2 Phase: ZB-MR1
 Signal #1 Info : 30M x 0.32mm x0.2 Signal #2 Info : 30M x 0.32mm x 0.50µm

	Compound	RT#1	RT#2	Resp#1	Resp#2	ng/ml	ng/ml

System Monitoring Compounds							
1)	SA Tetrachlo...	3.494	4.013	44788962	355.9E6	45.702	48.560
28)	SA Decachlor...	8.236	9.085	72479914	245.7E6	42.040	46.053
Target Compounds							
2)	A alpha-BHC	3.933	4.408	66998588	518.5E6	46.505	49.012
3)	MA gamma-BHC...	4.217	4.694	65278154	488.0E6	45.225	49.525
4)	MA Heptachlor	4.515	5.198	66765114	439.5E6	43.990	48.334
5)	MB Aldrin	4.762	5.504	64085844	406.8E6	44.844	48.218
6)	B beta-BHC	4.465	4.870	36945050	229.7E6	51.498	49.336
7)	B delta-BHC	4.670	5.085	70282612	461.1E6	47.128	49.592m
8)	B Heptachlo...	5.205	5.893	64993898	335.2E6	44.559	46.547
9)	A Endosulfan I	5.543	6.251	63543621	345.6E6	44.828	49.066
10)	B gamma-Chl...	5.429	6.126	67833838	367.5E6	44.412	48.945
11)	B alpha-Chl...	5.488	6.198	67266436	359.6E6	44.685	48.826
12)	B 4,4'-DDE	5.650	6.357	63946884	358.5E6	44.846	49.626
13)	MA Dieldrin	5.786	6.509	70288957	372.2E6	45.422	49.329
14)	MA Endrin	6.043	6.728	64138865	313.1E6	46.647	52.483
15)	B Endosulfa...	6.316	6.941	64548677	317.1E6	44.942	49.469
16)	A 4,4'-DDD	6.166	6.851	58797285	309.0E6	46.120	49.502
17)	MA 4,4'-DDT	6.405	7.148	61549356	295.1E6	44.718	48.444
18)	B Endrin al...	6.484	7.066	56592516	271.4E6	44.868	49.684
19)	B Endosulfa...	6.696	7.288	70284970	315.5E6	45.488	49.359
20)	A Methoxychlor	6.951	7.608	38369197	159.3E6	45.758	48.927
21)	B Endrin ke...	7.190	7.762	85097443	359.0E6	45.767	47.460
22)	Mirex	7.374	8.211	68970067	249.7E6	43.994	47.203

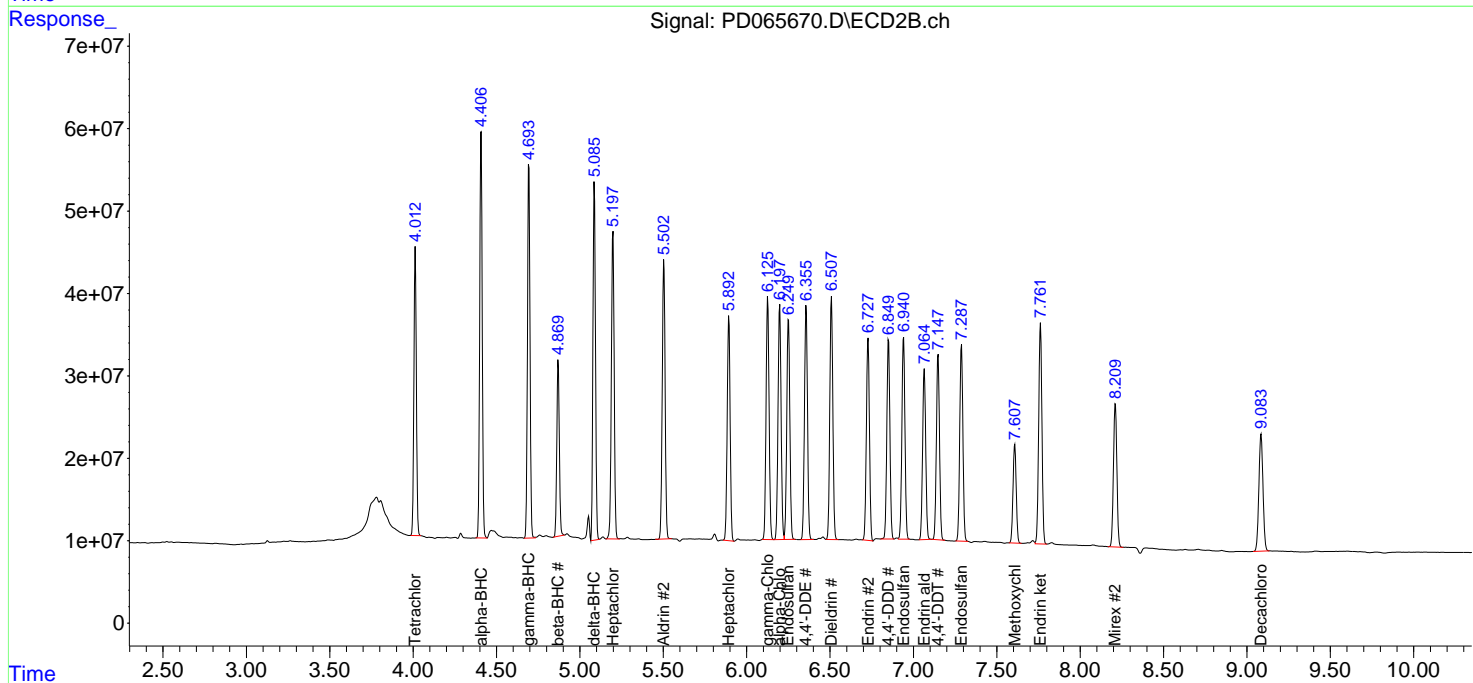
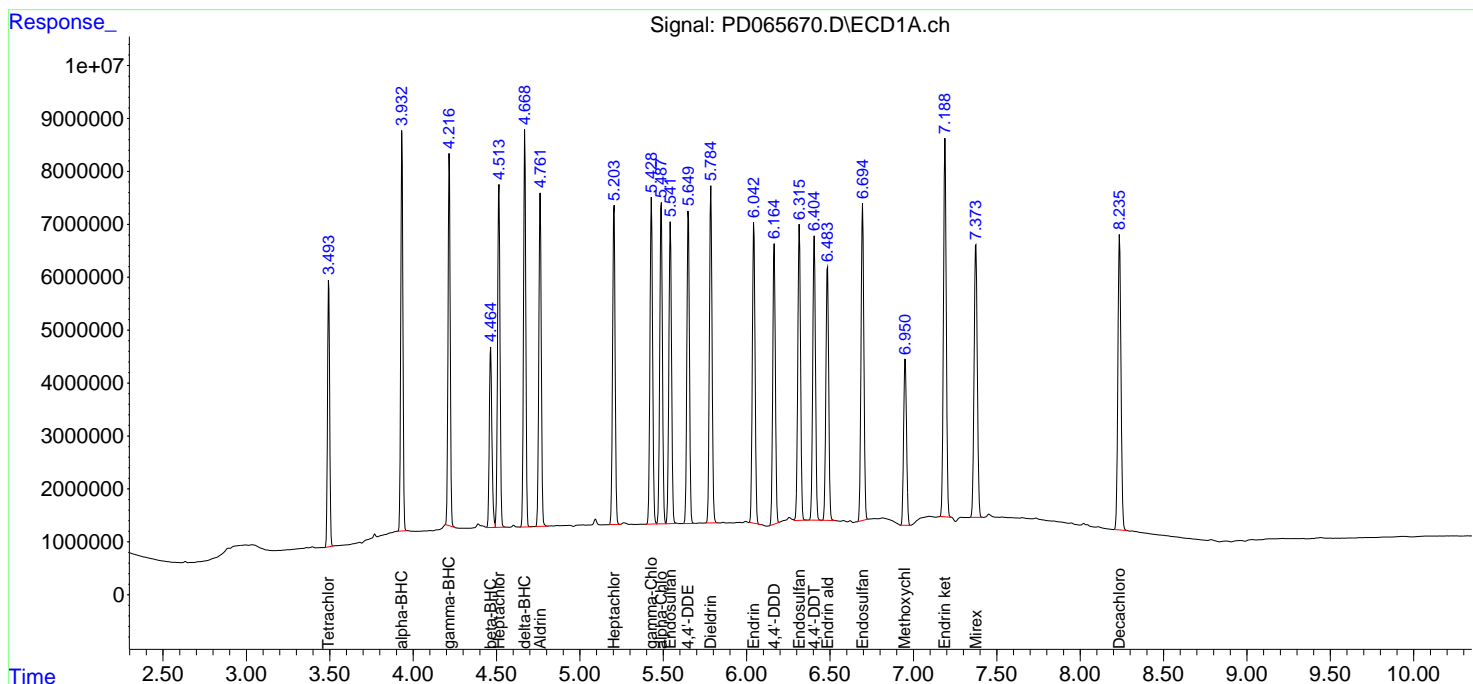
(f)=RT Delta > 1/2 Window (#)=Amounts differ by > 25% (m)=manual int.

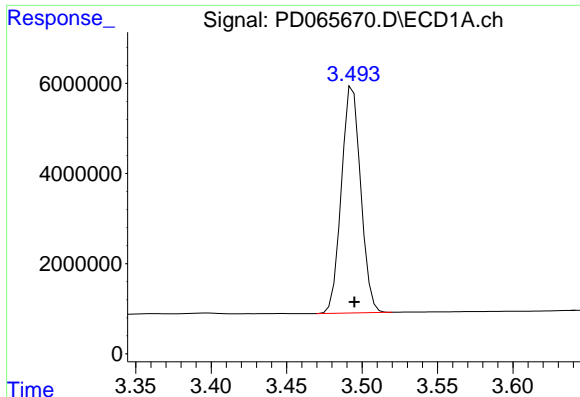
Data Path : Z:\pestpcbsrv\HPCHEM1\ECD_D\Data\PD091021\
 Data File : PD065670.D
 Signal(s) : Signal #1: ECD1A.ch Signal #2: ECD2B.ch
 Acq On : 10 Sep 2021 16:02
 Operator : AR\AJ
 Sample : PSTDCCC050
 Misc :
 ALS Vial : 4 Sample Multiplier: 1

Instrument :
 ECD_D
 ClientSampleID :
 PSTDCCC050

Integration File signal 1: autoint1.e
 Integration File signal 2: autoint2.e
 Quant Time: Sep 11 04:03:24 2021
 Quant Method : Z:\pestpcbsrv\HPCHEM1\ECD_D\Method\PD090421.M
 Quant Title : GC Extractables
 QLast Update : Thu Sep 09 15:08:21 2021
 Response via : Initial Calibration
 Integrator: ChemStation

Volume Inj. : 2 µl
 Signal #1 Phase : ZB-MR2 Signal #2 Phase: ZB-MR1
 Signal #1 Info : 30M x 0.32mm x0.2 Signal #2 Info : 30M x 0.32mm x 0.50µm

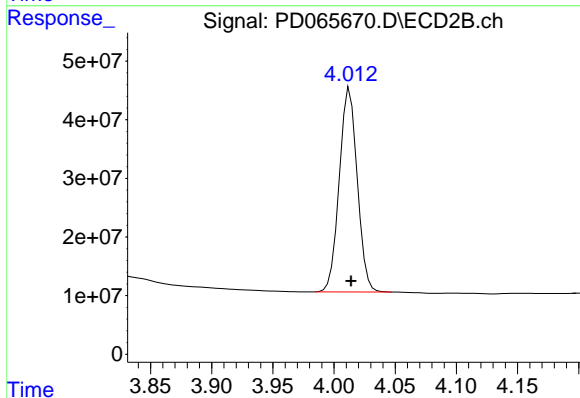




#1 Tetrachloro-m-xylene

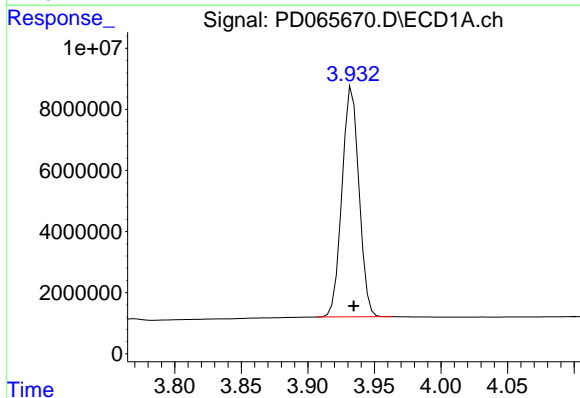
R.T.: 3.494 min
 Delta R.T.: -0.001 min
 Response: 44788962
 Conc: 45.70 ng/ml

Instrument :
 ECD_D
 ClientSampleId :
 PSTDCCC050



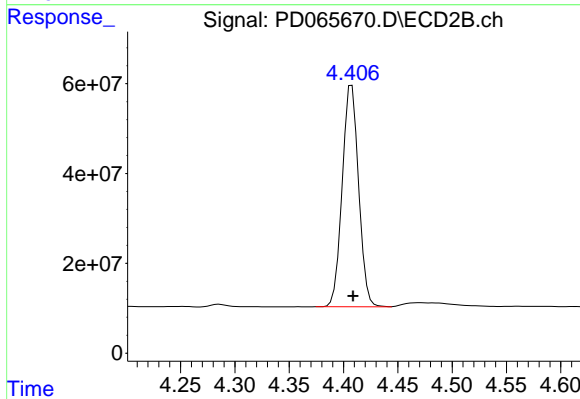
#1 Tetrachloro-m-xylene

R.T.: 4.013 min
 Delta R.T.: -0.001 min
 Response: 355912181
 Conc: 48.56 ng/ml



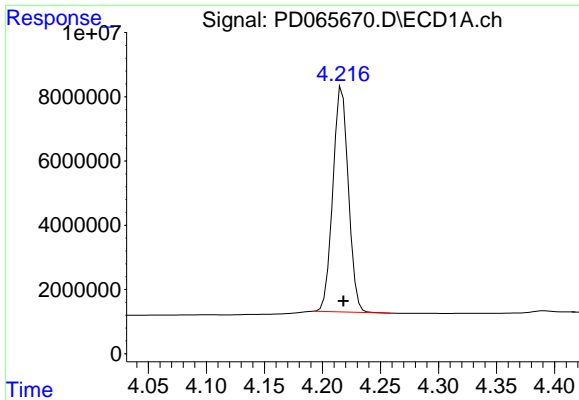
#2 alpha-BHC

R.T.: 3.933 min
 Delta R.T.: -0.001 min
 Response: 66998588
 Conc: 46.50 ng/ml



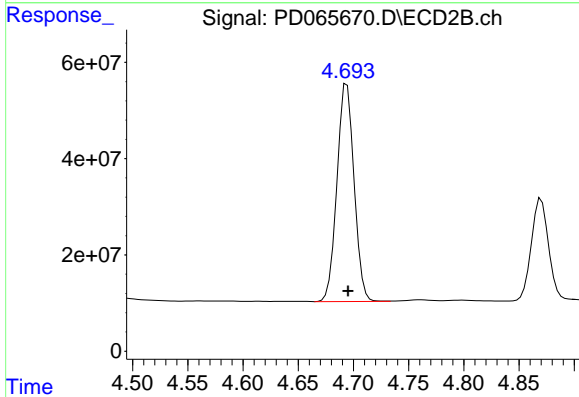
#2 alpha-BHC

R.T.: 4.408 min
 Delta R.T.: -0.001 min
 Response: 518473526
 Conc: 49.01 ng/ml

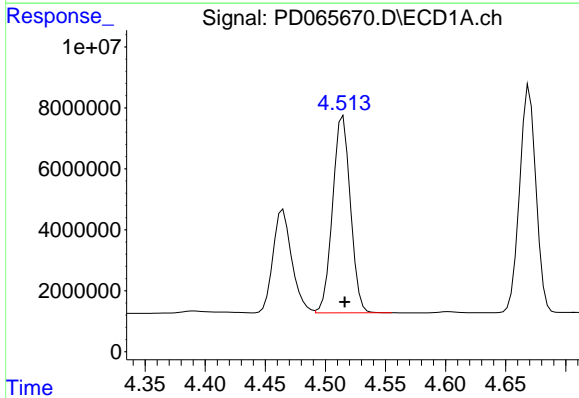


#3 gamma-BHC (Lindane)
 R.T.: 4.217 min
 Delta R.T.: -0.001 min
 Response: 65278154
 Conc: 45.22 ng/ml

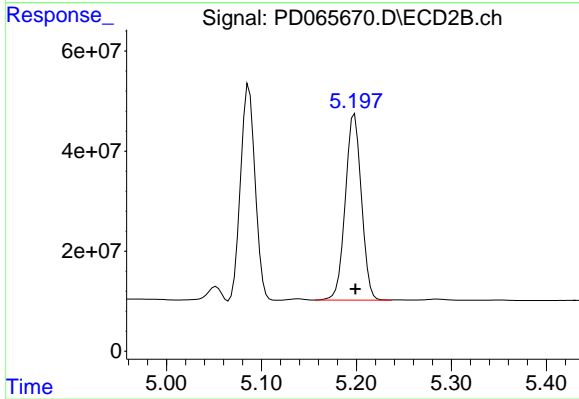
Instrument :
 ECD_D
ClientSampleId :
 PSTDCCC050



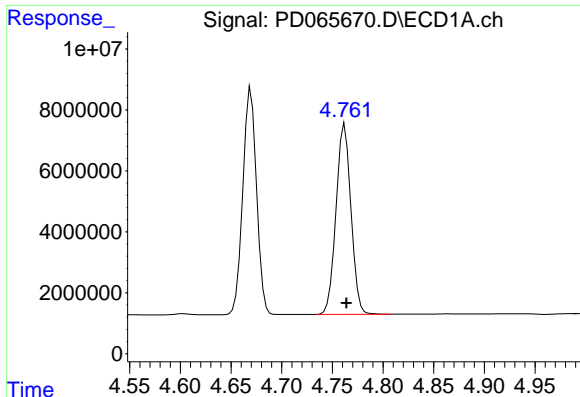
#3 gamma-BHC (Lindane)
 R.T.: 4.694 min
 Delta R.T.: -0.001 min
 Response: 488021523
 Conc: 49.53 ng/ml



#4 Heptachlor
 R.T.: 4.515 min
 Delta R.T.: -0.001 min
 Response: 66765114
 Conc: 43.99 ng/ml



#4 Heptachlor
 R.T.: 5.198 min
 Delta R.T.: 0.000 min
 Response: 439470305
 Conc: 48.33 ng/ml



#5 Aldrin

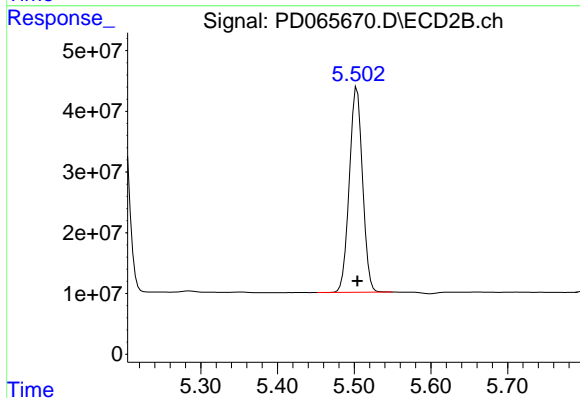
R.T.: 4.762 min

Delta R.T.: -0.002 min

Response: 64085844

Conc: 44.84 ng/ml

Instrument :
ECD_D
ClientSampleId :
PSTDCCC050



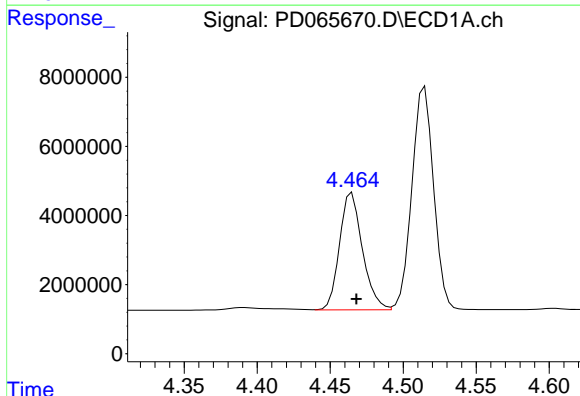
#5 Aldrin

R.T.: 5.504 min

Delta R.T.: 0.000 min

Response: 406809423

Conc: 48.22 ng/ml



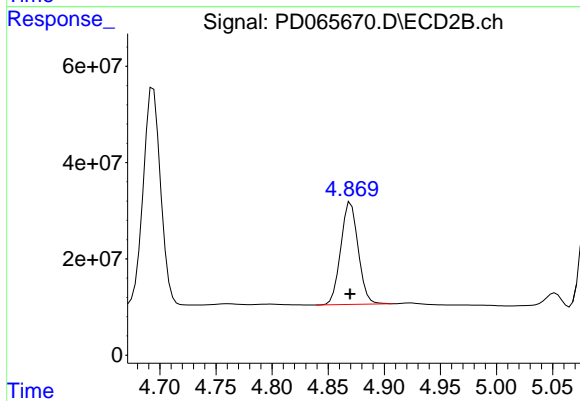
#6 beta-BHC

R.T.: 4.465 min

Delta R.T.: -0.003 min

Response: 36945050

Conc: 51.50 ng/ml



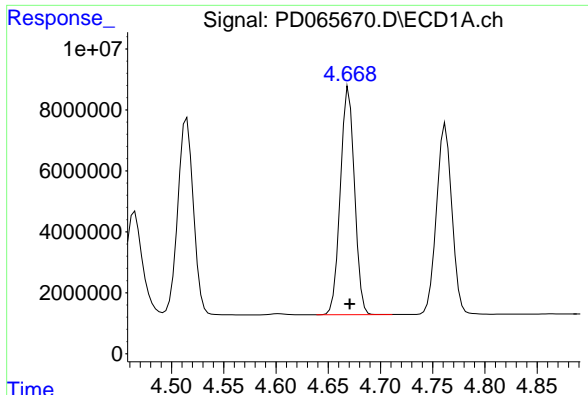
#6 beta-BHC

R.T.: 4.870 min

Delta R.T.: 0.000 min

Response: 229674743

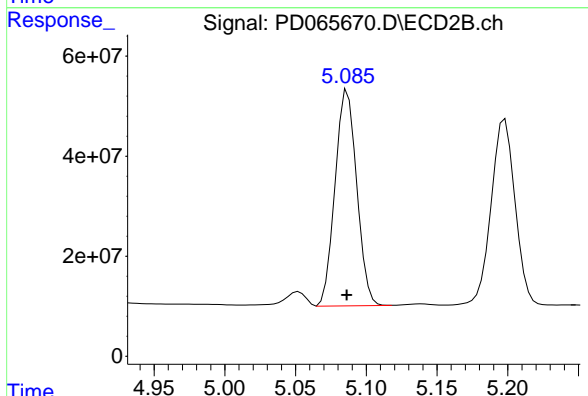
Conc: 49.34 ng/ml



#7 delta-BHC

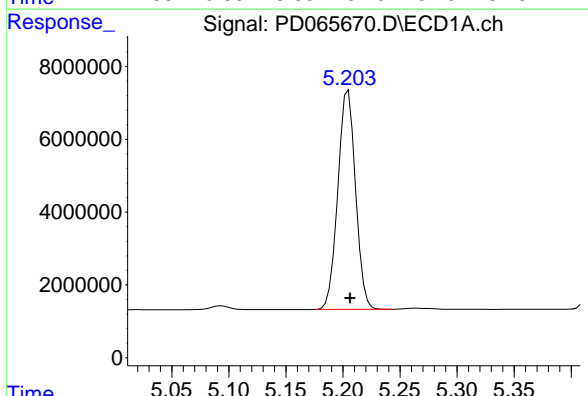
R.T.: 4.670 min
Delta R.T.: 0.000 min
Response: 70282612
Conc: 47.13 ng/ml

Instrument :
ECD_D
ClientSampleId :
PSTDCCC050



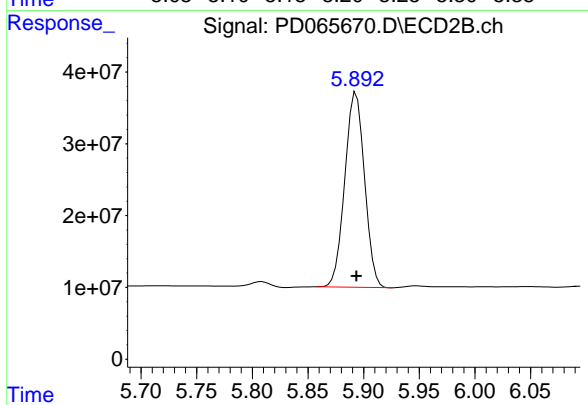
#7 delta-BHC

R.T.: 5.085 min
Delta R.T.: 0.000 min
Response: 461103467
Conc: 49.59 ng/ml m



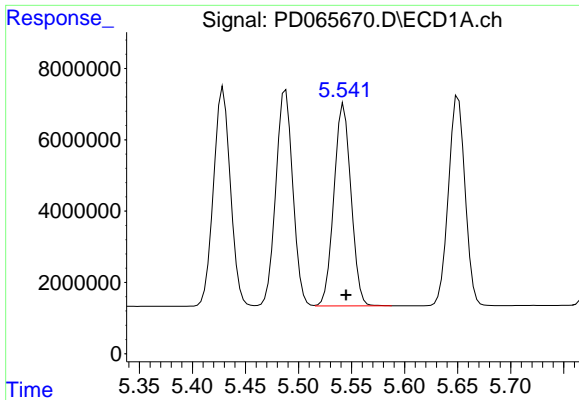
#8 Heptachlor epoxide

R.T.: 5.205 min
Delta R.T.: -0.001 min
Response: 64993898
Conc: 44.56 ng/ml



#8 Heptachlor epoxide

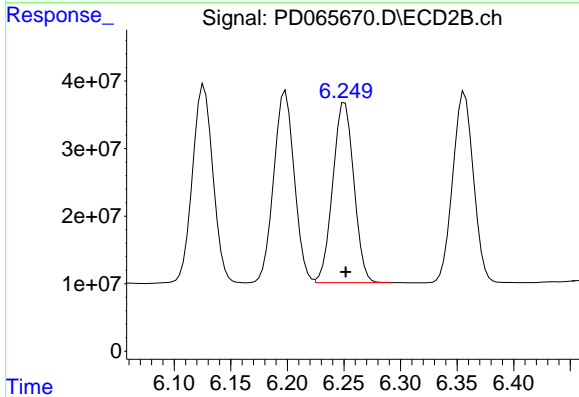
R.T.: 5.893 min
Delta R.T.: 0.000 min
Response: 335244176
Conc: 46.55 ng/ml



#9 Endosulfan I

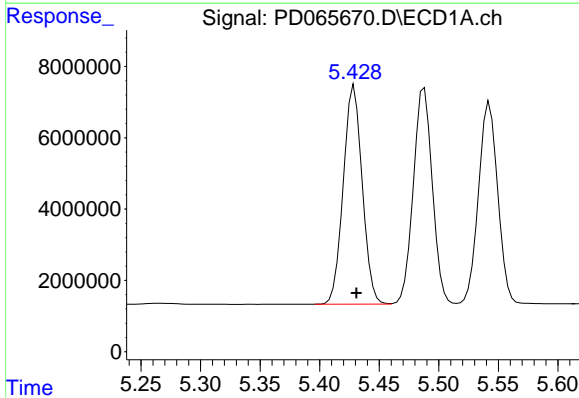
R.T.: 5.543 min
 Delta R.T.: -0.002 min
 Response: 63543621
 Conc: 44.83 ng/ml

Instrument :
 ECD_D
 ClientSampleId :
 PSTDCCC050



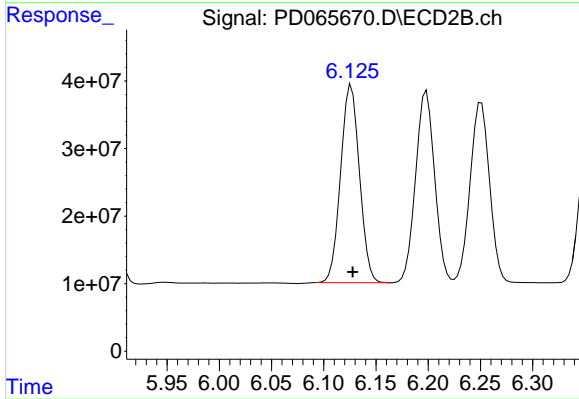
#9 Endosulfan I

R.T.: 6.251 min
 Delta R.T.: 0.000 min
 Response: 345569256
 Conc: 49.07 ng/ml



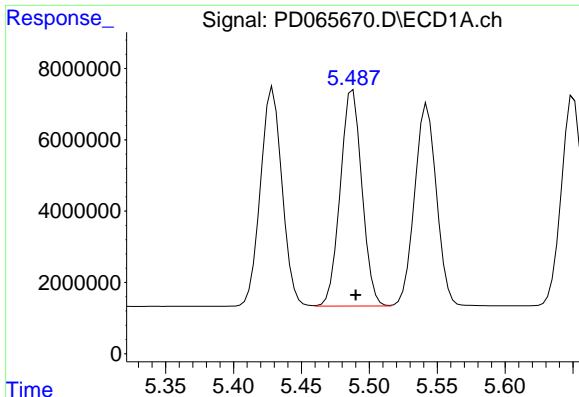
#10 gamma-Chlordane

R.T.: 5.429 min
 Delta R.T.: -0.002 min
 Response: 67833838
 Conc: 44.41 ng/ml



#10 gamma-Chlordane

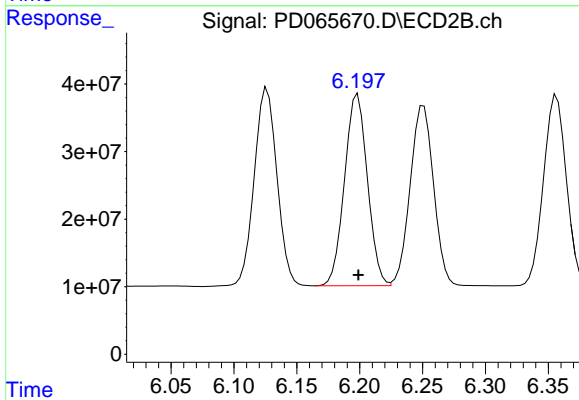
R.T.: 6.126 min
 Delta R.T.: -0.001 min
 Response: 367545534
 Conc: 48.95 ng/ml



#11 alpha-Chlordane

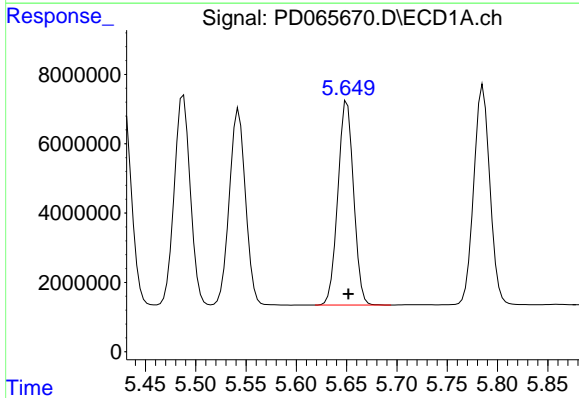
R.T.: 5.488 min
 Delta R.T.: -0.002 min
 Response: 67266436
 Conc: 44.68 ng/ml

Instrument :
 ECD_D
 ClientSampleId :
 PSTDCCC050



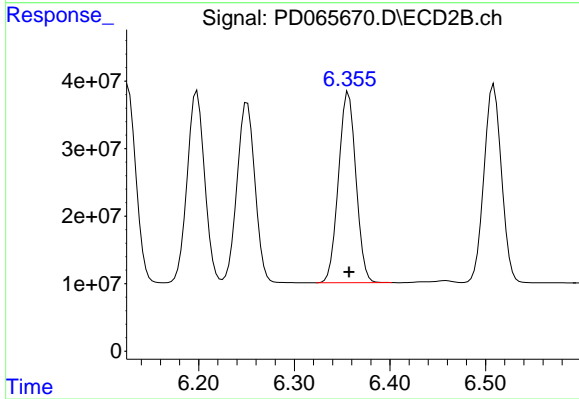
#11 alpha-Chlordane

R.T.: 6.198 min
 Delta R.T.: 0.000 min
 Response: 359600351
 Conc: 48.83 ng/ml



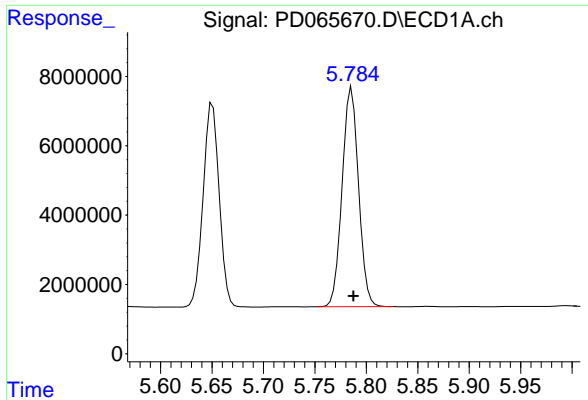
#12 4,4'-DDE

R.T.: 5.650 min
 Delta R.T.: -0.001 min
 Response: 63946884
 Conc: 44.85 ng/ml



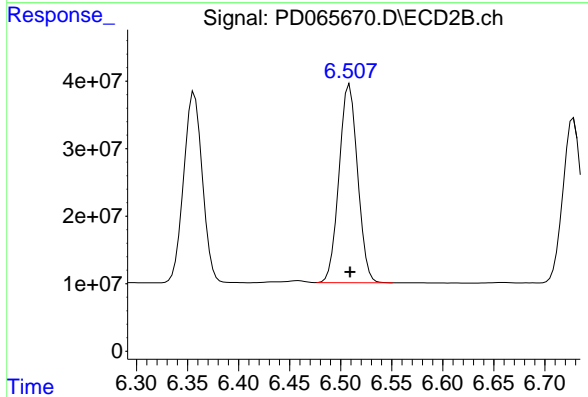
#12 4,4'-DDE

R.T.: 6.357 min
 Delta R.T.: 0.000 min
 Response: 358543302
 Conc: 49.63 ng/ml

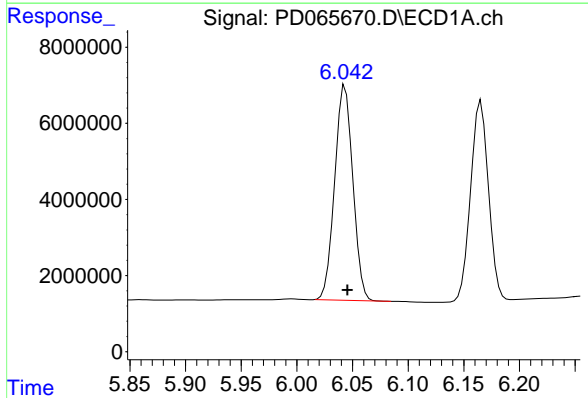


#13 Dieldrin
 R.T.: 5.786 min
 Delta R.T.: -0.002 min
 Response: 70288957
 Conc: 45.42 ng/ml

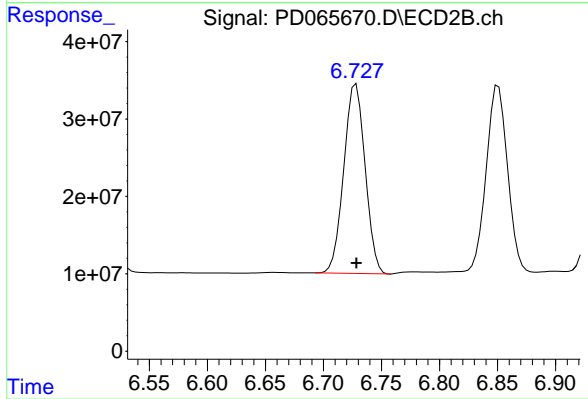
Instrument :
 ECD_D
 ClientSampleId :
 PSTDCCC050



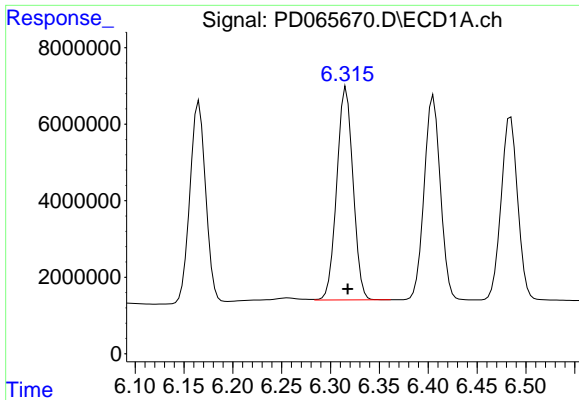
#13 Dieldrin
 R.T.: 6.509 min
 Delta R.T.: 0.000 min
 Response: 372157762
 Conc: 49.33 ng/ml



#14 Endrin
 R.T.: 6.043 min
 Delta R.T.: -0.002 min
 Response: 64138865
 Conc: 46.65 ng/ml

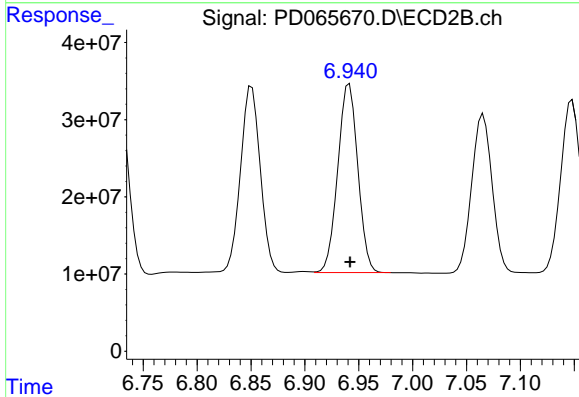


#14 Endrin
 R.T.: 6.728 min
 Delta R.T.: 0.000 min
 Response: 313081616
 Conc: 52.48 ng/ml

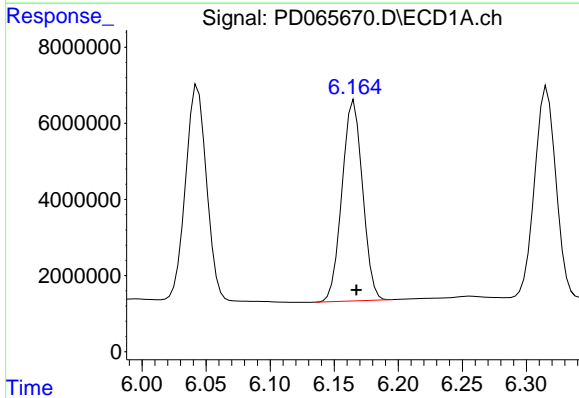


#15 Endosulfan II
 R.T.: 6.316 min
 Delta R.T.: -0.001 min
 Response: 64548677
 Conc: 44.94 ng/ml

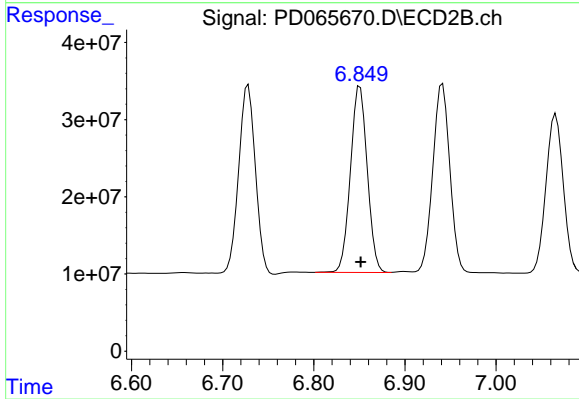
Instrument :
 ECD_D
 ClientSampleId :
 PSTDCCC050



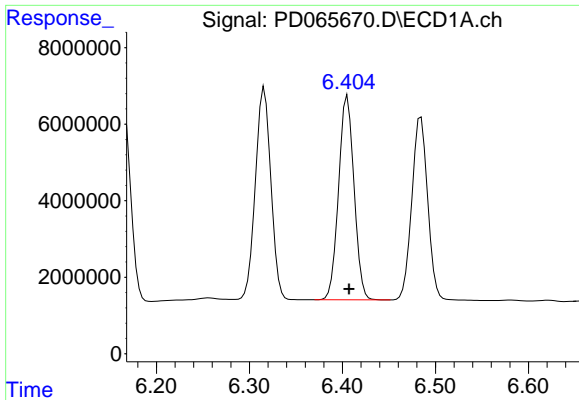
#15 Endosulfan II
 R.T.: 6.941 min
 Delta R.T.: 0.000 min
 Response: 317140300
 Conc: 49.47 ng/ml



#16 4,4'-DDD
 R.T.: 6.166 min
 Delta R.T.: -0.002 min
 Response: 58797285
 Conc: 46.12 ng/ml

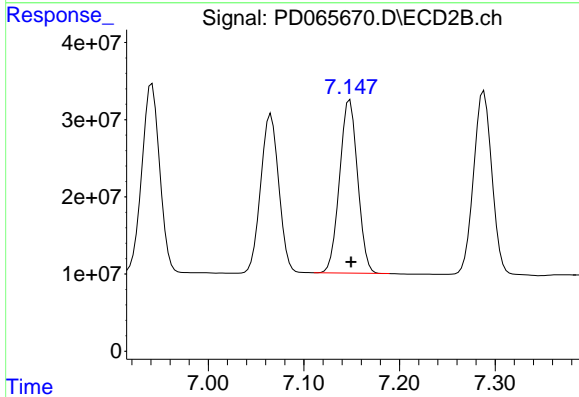


#16 4,4'-DDD
 R.T.: 6.851 min
 Delta R.T.: 0.000 min
 Response: 309011907
 Conc: 49.50 ng/ml

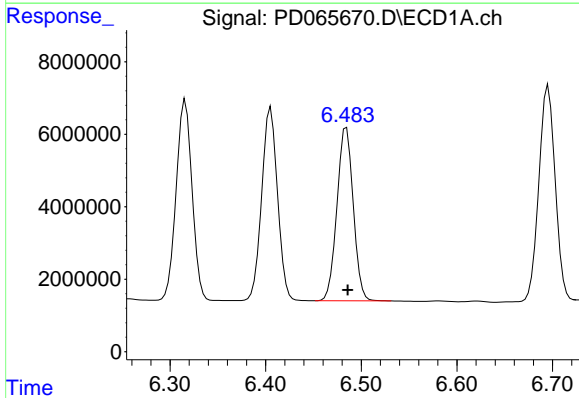


#17 4,4'-DDT
 R.T.: 6.405 min
 Delta R.T.: -0.002 min
 Response: 61549356
 Conc: 44.72 ng/ml

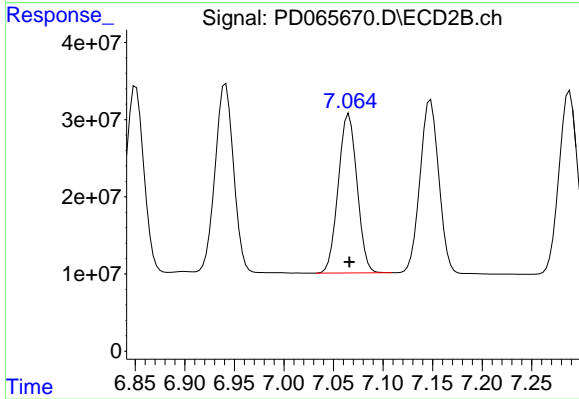
Instrument :
 ECD_D
ClientSampleId :
 PSTDCCC050



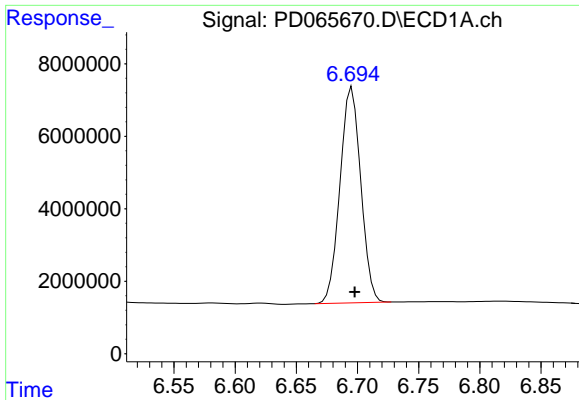
#17 4,4'-DDT
 R.T.: 7.148 min
 Delta R.T.: -0.001 min
 Response: 295087916
 Conc: 48.44 ng/ml



#18 Endrin aldehyde
 R.T.: 6.484 min
 Delta R.T.: -0.001 min
 Response: 56592516
 Conc: 44.87 ng/ml

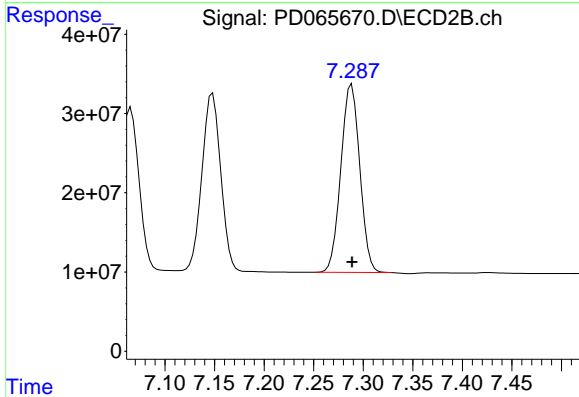


#18 Endrin aldehyde
 R.T.: 7.066 min
 Delta R.T.: 0.000 min
 Response: 271448127
 Conc: 49.68 ng/ml

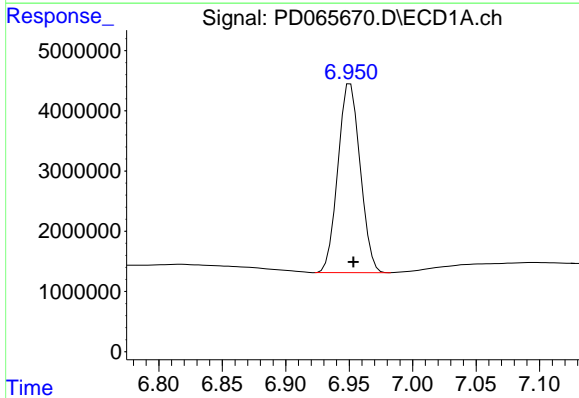


#19 Endosulfan Sulfate
 R.T.: 6.696 min
 Delta R.T.: -0.002 min
 Response: 70284970
 Conc: 45.49 ng/ml

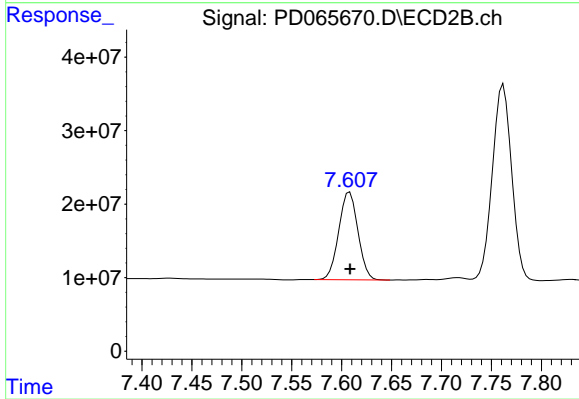
Instrument :
 ECD_D
ClientSampleId :
 PSTDCCC050



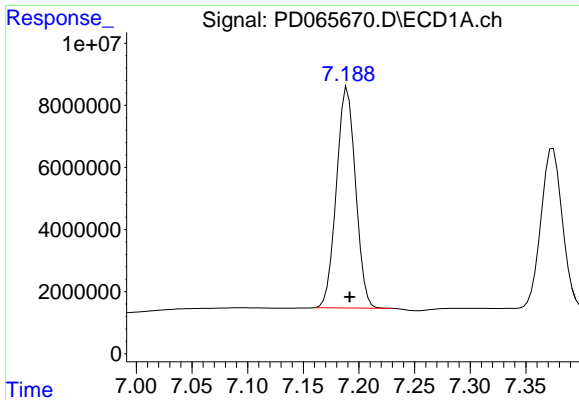
#19 Endosulfan Sulfate
 R.T.: 7.288 min
 Delta R.T.: 0.000 min
 Response: 31535352
 Conc: 49.36 ng/ml



#20 Methoxychlor
 R.T.: 6.951 min
 Delta R.T.: -0.002 min
 Response: 38369197
 Conc: 45.76 ng/ml



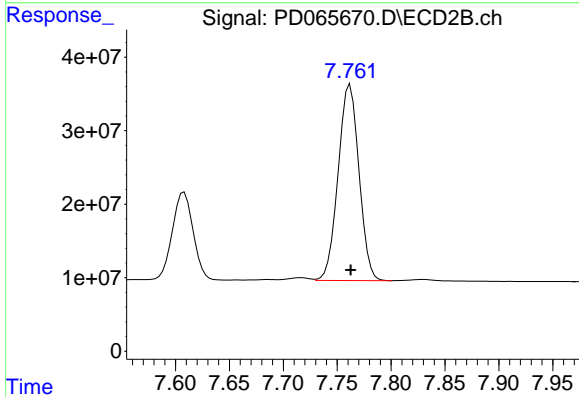
#20 Methoxychlor
 R.T.: 7.608 min
 Delta R.T.: 0.000 min
 Response: 159257733
 Conc: 48.93 ng/ml



#21 Endrin ketone

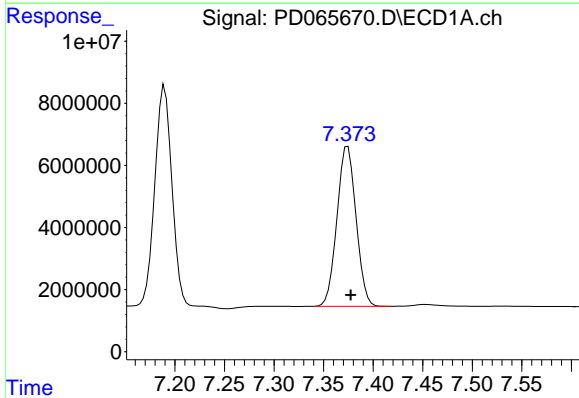
R.T.: 7.190 min
 Delta R.T.: -0.002 min
 Response: 85097443
 Conc: 45.77 ng/ml

Instrument :
 ECD_D
 ClientSampleId :
 PSTDCCC050



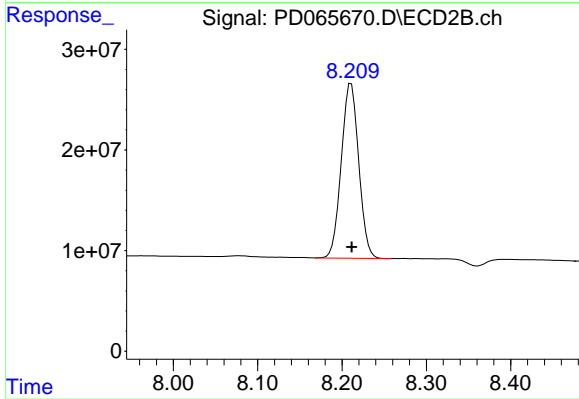
#21 Endrin ketone

R.T.: 7.762 min
 Delta R.T.: 0.000 min
 Response: 359039778
 Conc: 47.46 ng/ml



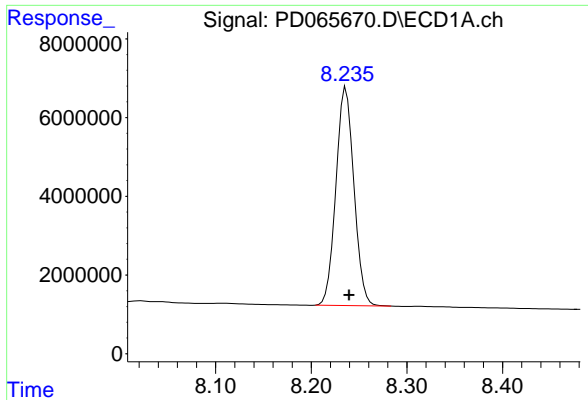
#22 Mirex

R.T.: 7.374 min
 Delta R.T.: -0.003 min
 Response: 68970067
 Conc: 43.99 ng/ml



#22 Mirex

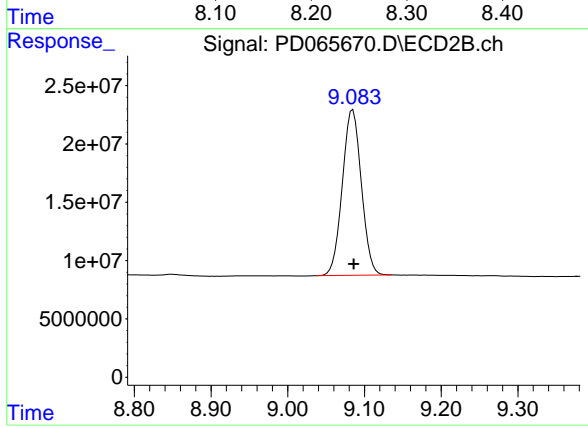
R.T.: 8.211 min
 Delta R.T.: 0.000 min
 Response: 249660576
 Conc: 47.20 ng/ml



#28 Decachlorobiphenyl

R.T.: 8.236 min
Delta R.T.: -0.003 min
Response: 72479914
Conc: 42.04 ng/ml

Instrument :
ECD_D
ClientSampleId :
PSTDCCC050



#28 Decachlorobiphenyl

R.T.: 9.085 min
Delta R.T.: -0.001 min
Response: 245738425
Conc: 46.05 ng/ml