

Data Path : Z:\pestpcbsrv\HPCHEM1\ECD_D\Data\PD091021\
 Data File : PD065675.D
 Signal(s) : Signal #1: ECD1A.ch Signal #2: ECD2B.ch
 Acq On : 10 Sep 2021 17:26
 Operator : AR\AJ
 Sample : I.BLK
 Misc :
 ALS Vial : 2 Sample Multiplier: 1

Instrument :
 ECD_D
 ClientSampleId :
 I.BLK

Integration File signal 1: autoint1.e
 Integration File signal 2: autoint2.e
 Quant Time: Sep 11 04:04:08 2021
 Quant Method : Z:\pestpcbsrv\HPCHEM1\ECD_D\Method\PD090421.M
 Quant Title : GC Extractables
 QLast Update : Thu Sep 09 15:08:21 2021
 Response via : Initial Calibration
 Integrator: ChemStation

Volume Inj. : 2 µl
 Signal #1 Phase : ZB-MR2 Signal #2 Phase: ZB-MR1
 Signal #1 Info : 30M x 0.32mm x0.2 Signal #2 Info : 30M x 0.32mm x 0.50µm

Compound	RT#1	RT#2	Resp#1	Resp#2	ng/ml	ng/ml

System Monitoring Compounds						
1) SA Tetrachlo...	3.494	4.013	19631347	161.2E6	20.032	21.991
2) SA Decachlor...	8.237	9.086	24537798	78405659	14.232	14.694

Target Compounds

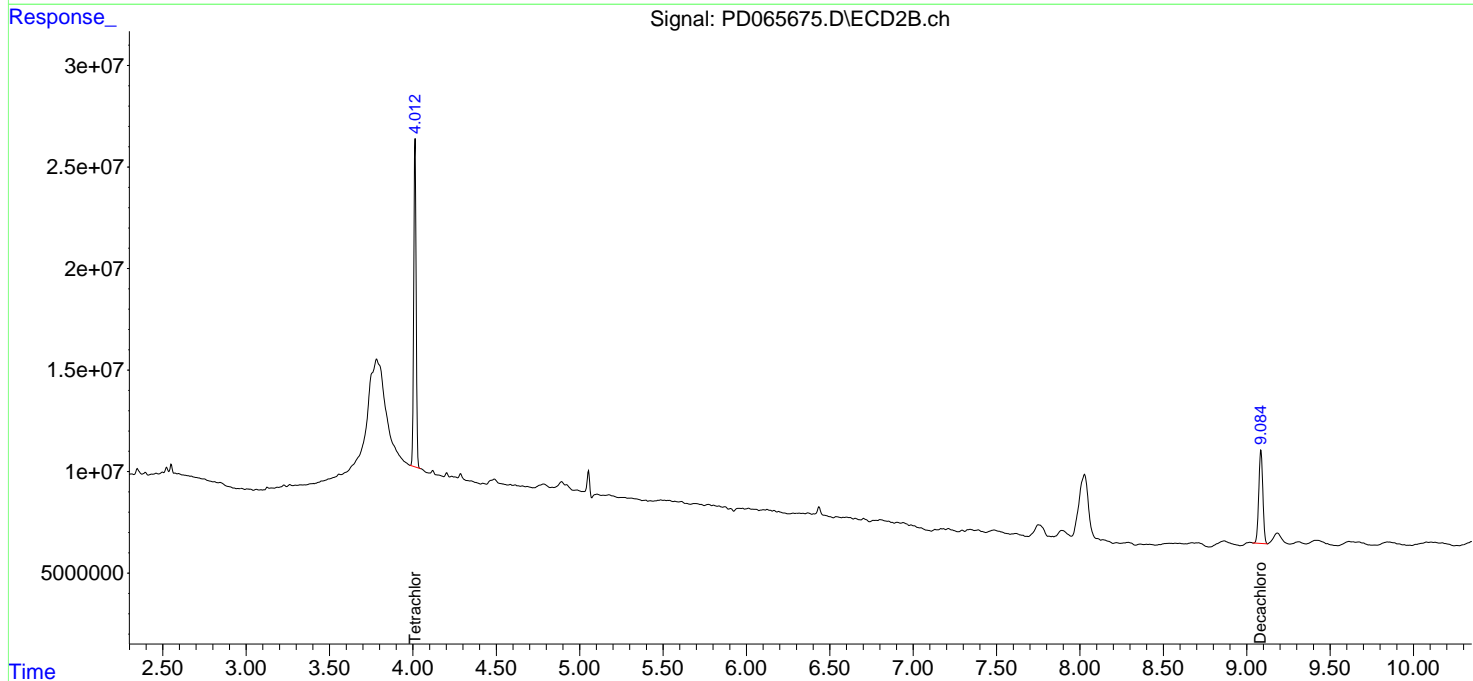
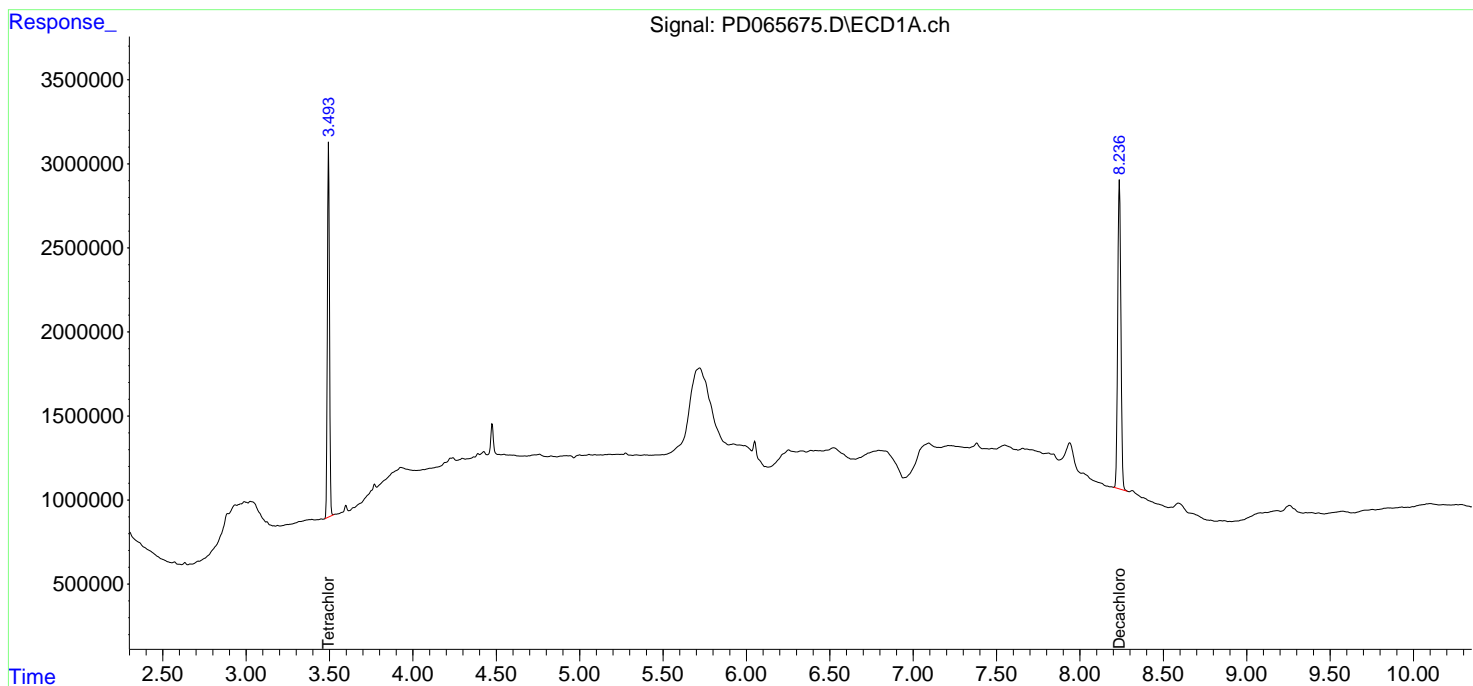
(f)=RT Delta > 1/2 Window (#)=Amounts differ by > 25% (m)=manual int.

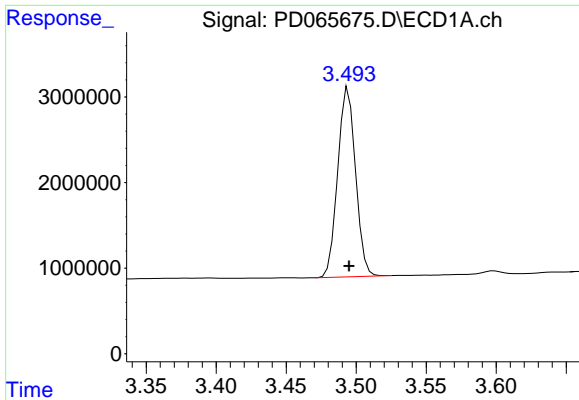
Data Path : Z:\pestpcbsrv\HPCHEM1\ECD_D\Data\PD091021\
 Data File : PD065675.D
 Signal(s) : Signal #1: ECD1A.ch Signal #2: ECD2B.ch
 Acq On : 10 Sep 2021 17:26
 Operator : AR\AJ
 Sample : I.BLK
 Misc :
 ALS Vial : 2 Sample Multiplier: 1

Instrument :
 ECD_D
 ClientSampleId :
 I.BLK

Integration File signal 1: autoint1.e
 Integration File signal 2: autoint2.e
 Quant Time: Sep 11 04:04:08 2021
 Quant Method : Z:\pestpcbsrv\HPCHEM1\ECD_D\Method\PD090421.M
 Quant Title : GC Extractables
 QLast Update : Thu Sep 09 15:08:21 2021
 Response via : Initial Calibration
 Integrator: ChemStation

Volume Inj. : 2 µl
 Signal #1 Phase : ZB-MR2 Signal #2 Phase: ZB-MR1
 Signal #1 Info : 30M x 0.32mm x 0.2 Signal #2 Info : 30M x 0.32mm x 0.50µm

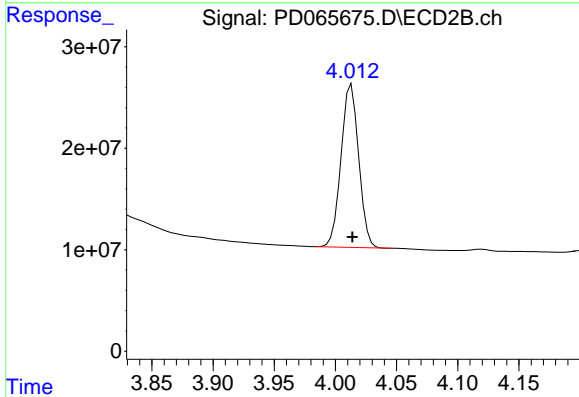




#1 Tetrachloro-m-xylene

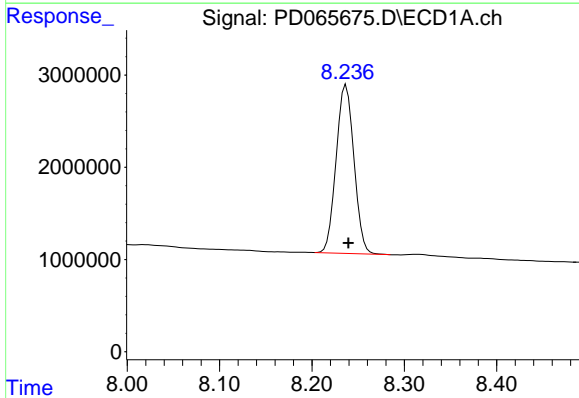
R.T.: 3.494 min
 Delta R.T.: 0.000 min
 Response: 19631347
 Conc: 20.03 ng/ml

Instrument :
 ECD_D
 ClientSampled :
 I.BLK



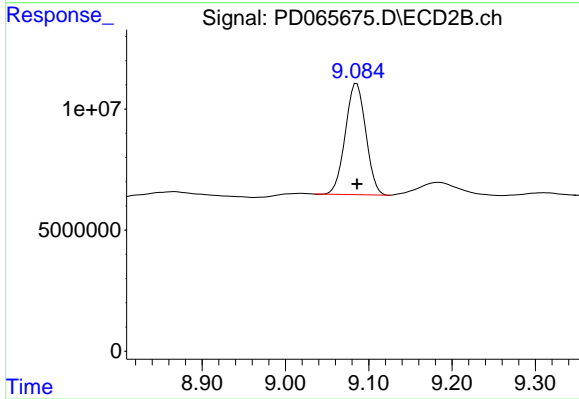
#1 Tetrachloro-m-xylene

R.T.: 4.013 min
 Delta R.T.: 0.000 min
 Response: 161177332
 Conc: 21.99 ng/ml



#28 Decachlorobiphenyl

R.T.: 8.237 min
 Delta R.T.: -0.002 min
 Response: 24537798
 Conc: 14.23 ng/ml



#28 Decachlorobiphenyl

R.T.: 9.086 min
 Delta R.T.: 0.000 min
 Response: 78405659
 Conc: 14.69 ng/ml