

Data Path : Z:\pestpcbsrv\HPCHEM1\ECD\_D\Data\PD091118\  
 Data File : PD049159.D  
 Signal(s) : Signal #1: ECD1A.CH Signal #2: ECD2B.CH  
 Acq On : 11 Sep 2018 22:59  
 Operator : AJ\SJ  
 Sample : J4792-19  
 Misc :  
 ALS Vial : 27 Sample Multiplier: 1

Instrument :  
 ECD\_D  
 ClientSampled :  
 A3YZ5

Integration File signal 1: autoint1.e  
 Integration File signal 2: autoint2.e  
 Quant Time: Sep 12 05:30:38 2018  
 Quant Method : Z:\pestpcbsrv\HPCHEM1\ECD\_D\Method\PD081618CLP.M  
 Quant Title : GC Extractables  
 QLast Update : Thu Aug 16 13:32:25 2018  
 Response via : Initial Calibration  
 Integrator: ChemStation 6890 Scale Mode: Large solvent peaks clipped

Volume Inj. : 1 µl  
 Signal #1 Phase : ZB-MR2 Signal #2 Phase: ZB-MR1  
 Signal #1 Info : 30M x 0.32mm x0.2 Signal #2 Info : 30M x 0.32mm x 0.50µm

Compound	RT#1	RT#2	Resp#1	Resp#2	ng/ml	ng/ml
-----						
System Monitoring Compounds						
1) SA Tetrachlo...	3.370	3.968	14007383	159.0E6	11.476	9.045
27) SA Decachlor...	8.066	8.989	33160367	189.8E6	23.030	11.725 #
Target Compounds						
3) MA gamma-BHC...	4.084	4.636	2361600	16968890	1.271	0.662 #
4) MA Heptachlor	0.000	5.187f	0	8004303	N.D.	0.324
5) MB Aldrin	0.000	5.463	0	61472003	N.D.	2.474
6) B beta-BHC	0.000	4.811	0	6871240	N.D.	0.655
7) B delta-BHC	0.000	5.051f	0	17564560	N.D.	0.773
8) B Heptachlo...	5.102f	5.816	67462842	504.7E6	42.428	23.132 #
9) A Endosulfan I	5.408	6.159	21227965	24684625	13.644	1.152 #
11) B cis-Chlor...	5.317	6.159	-1516306	24684625	N.D.	1.076
12) B 4,4'-DDE	5.495	6.285	-8273574	274.8E6	N.D.	13.558
13) MA Dieldrin	5.619	6.430	89270308	56173938	50.914	2.533 #
15) B Endosulfa...	6.135	6.895f	46357460	361.3E6	30.706	18.934 #
16) A 4,4'-DDD	6.066f	6.780	49537007	567.1E6	34.741	37.402
17) MA 4,4'-DDT	6.240	7.043	107.5E6	450.5E6	72.829	27.941 #
18) B Endrin al...	0.000	6.982	0	97182038	N.D.	6.537
19) B Endosulfa...	6.554	0.000	31650044	0	22.989	N.D. #
20) A Methoxychlor	6.828	7.499	-3339814	84142683	N.D.	12.291
21) B Endrin ke...	7.042	7.631	-8911529	161.0E6	N.D.	9.723
22) Toxaphene-1	5.581	6.366	-30799089	608.8E6	N.D.	6189.490
23) Toxaphene-2	5.746	6.895	53500845	361.3E6	5214.698	603.481 #
24) Toxaphene-3	6.189	7.043	11758638	450.5E6	447.095	2439.379 #
25) Toxaphene-4	6.424	7.297	16292424	526.5E6	576.707	4486.899 #
26) Toxaphene-5	6.909	7.631	5557838	161.0E6	163.718	827.468 #

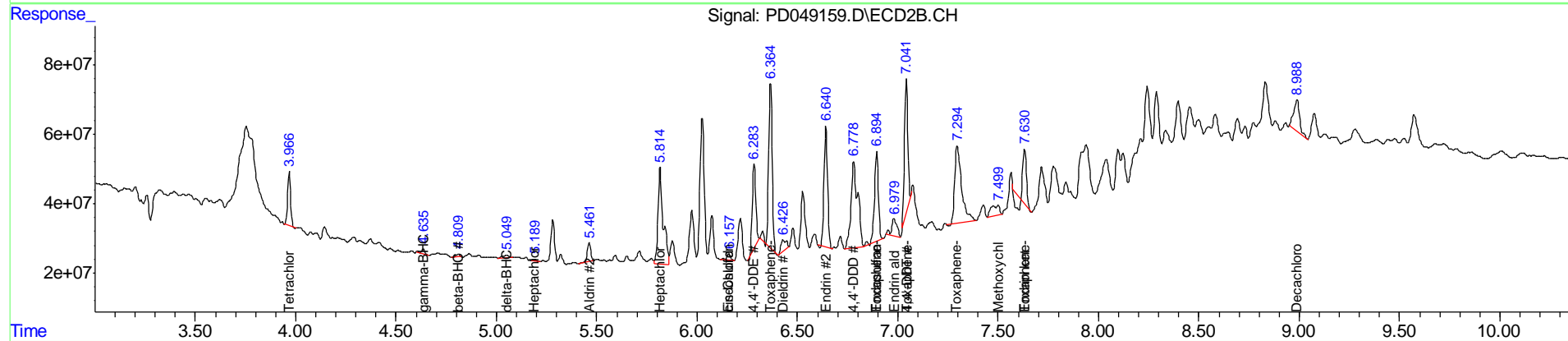
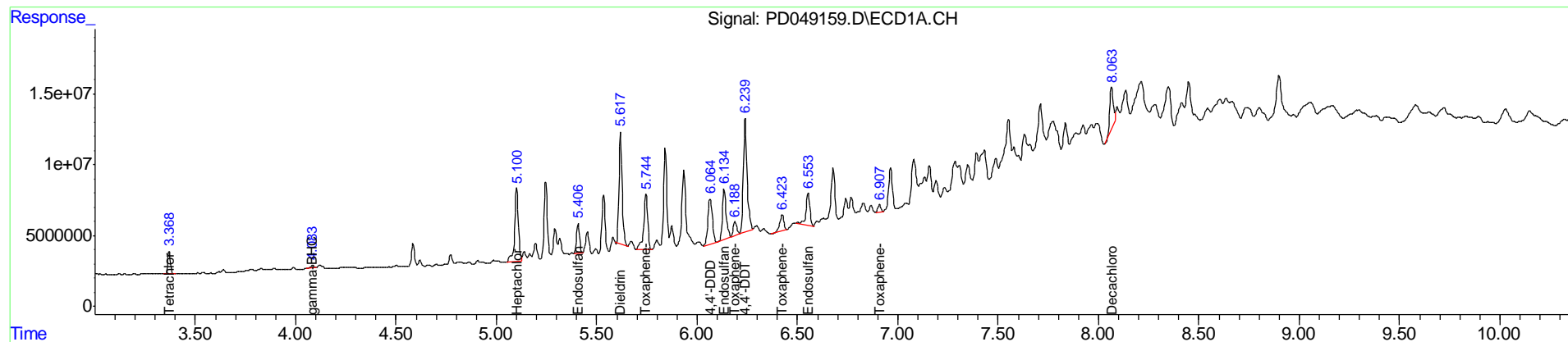
(f)=RT Delta > 1/2 Window (#)=Amounts differ by > 25% (m)=manual int.

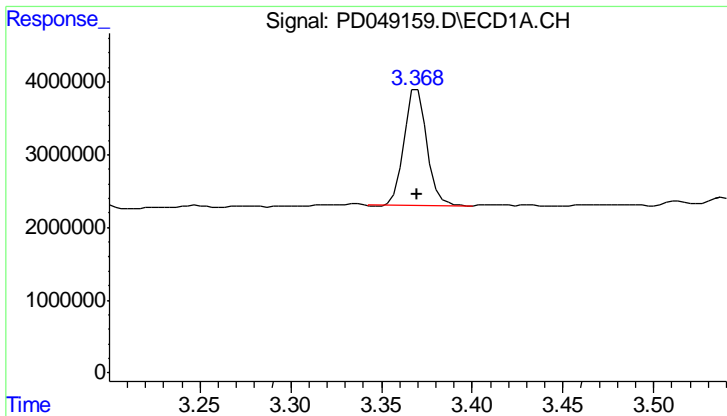
Data Path : Z:\pestpcbsrv\HPCHEM1\ECD\_D\Data\PD091118\  
 Data File : PD049159.D  
 Signal(s) : Signal #1: ECD1A.CH Signal #2: ECD2B.CH  
 Acq On : 11 Sep 2018 22:59  
 Operator : AJ\SJ  
 Sample : J4792-19  
 Misc :  
 ALS Vial : 27 Sample Multiplier: 1

Instrument :  
 ECD\_D  
 ClientSampleId :  
 A3YZ5

Integration File signal 1: autoint1.e  
 Integration File signal 2: autoint2.e  
 Quant Time: Sep 12 05:30:38 2018  
 Quant Method : Z:\pestpcbsrv\HPCHEM1\ECD\_D\Method\PD081618CLP.M  
 Quant Title : GC Extractables  
 QLast Update : Thu Aug 16 13:32:25 2018  
 Response via : Initial Calibration  
 Integrator: ChemStation 6890 Scale Mode: Large solvent peaks clipped

Volume Inj. : 1 µl  
 Signal #1 Phase : ZB-MR2 Signal #2 Phase: ZB-MR1  
 Signal #1 Info : 30M x 0.32mm x0.2 Signal #2 Info : 30M x 0.32mm x 0.50µm

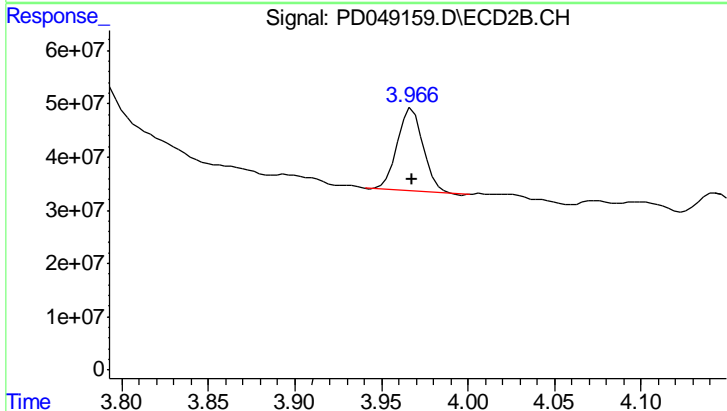




#1 Tetrachloro-m-xylene

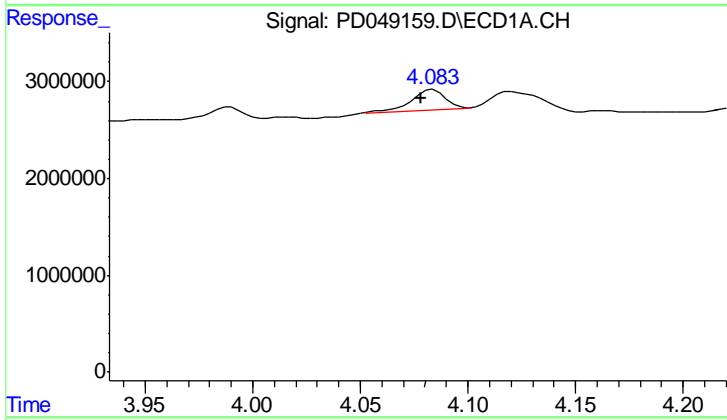
R.T.: 3.370 min  
 Delta R.T.: 0.000 min  
 Response: 14007383  
 Conc: 11.48 ng/ml

Instrument :  
 ECD\_D  
 ClientSampleId :  
 A3YZ5



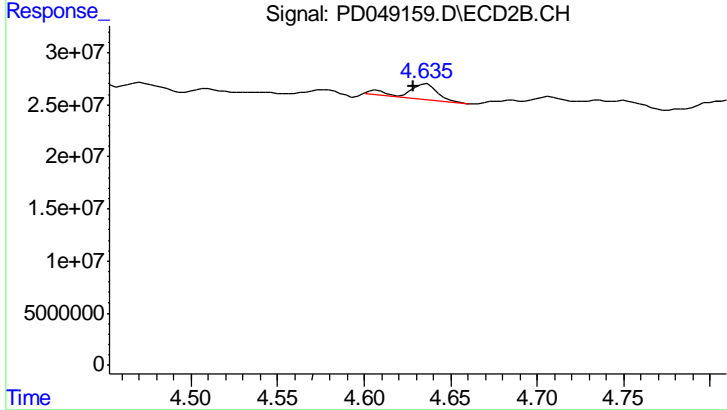
#1 Tetrachloro-m-xylene

R.T.: 3.968 min  
 Delta R.T.: 0.000 min  
 Response: 159032372  
 Conc: 9.04 ng/ml



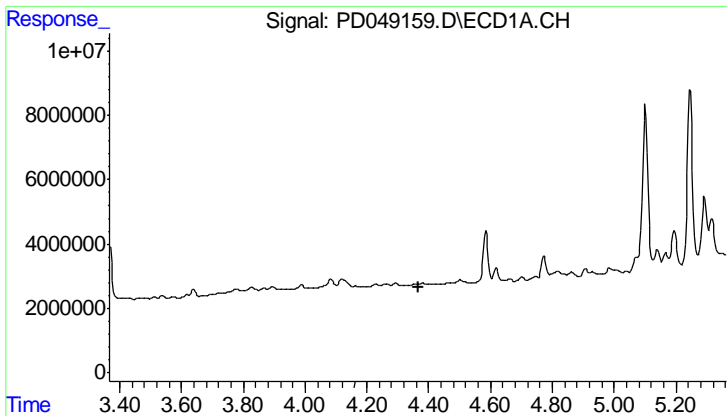
#3 gamma-BHC (Lindane)

R.T.: 4.084 min  
 Delta R.T.: 0.006 min  
 Response: 2361600  
 Conc: 1.27 ng/ml



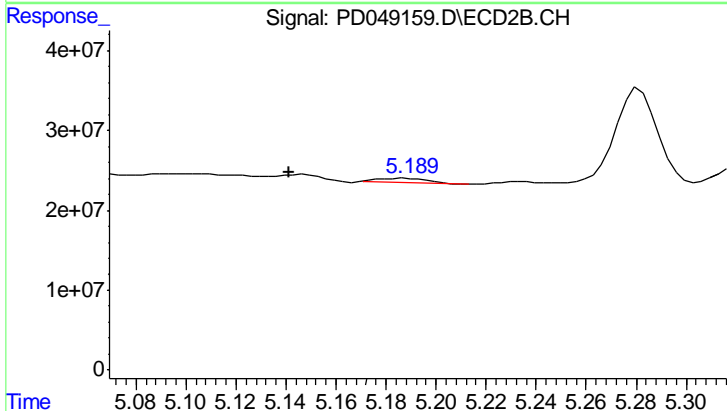
#3 gamma-BHC (Lindane)

R.T.: 4.636 min  
 Delta R.T.: 0.008 min  
 Response: 16968890  
 Conc: 0.66 ng/ml

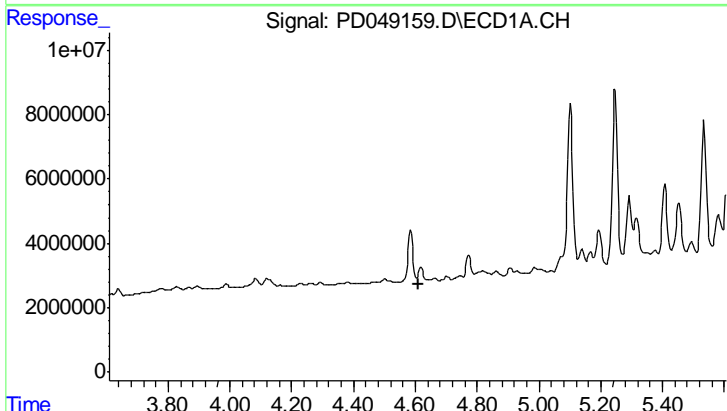


#4 Heptachlor  
 R.T.: 0.000 min  
 Exp R.T.: 4.367 min  
 Response: 0  
 Conc: N.D.

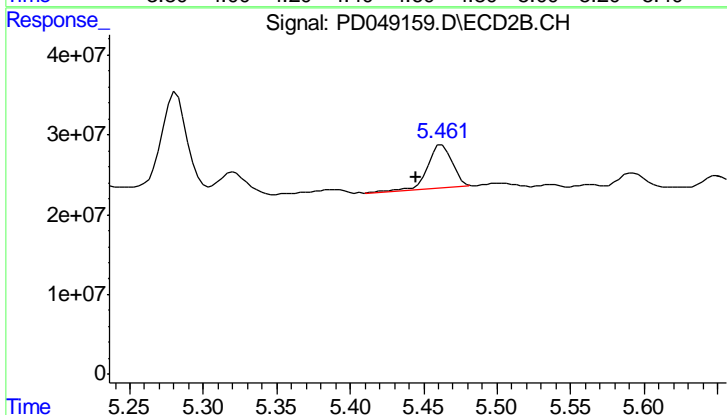
Instrument :  
 ECD\_D  
 ClientSampled :  
 A3YZ5



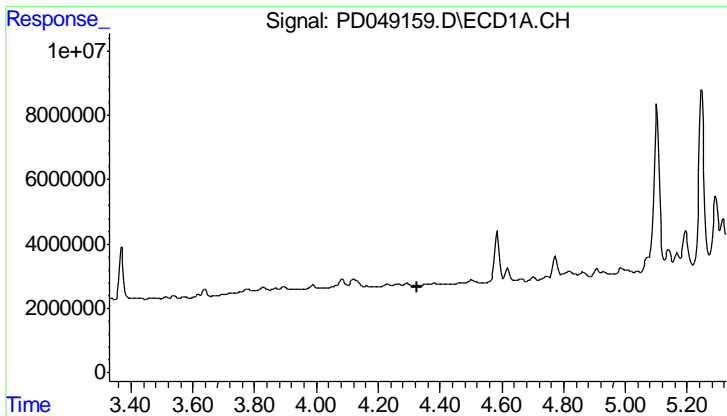
#4 Heptachlor  
 R.T.: 5.187 min  
 Delta R.T.: 0.046 min  
 Response: 8004303  
 Conc: 0.32 ng/ml



#5 Aldrin  
 R.T.: 0.000 min  
 Exp R.T.: 4.609 min  
 Response: 0  
 Conc: N.D.



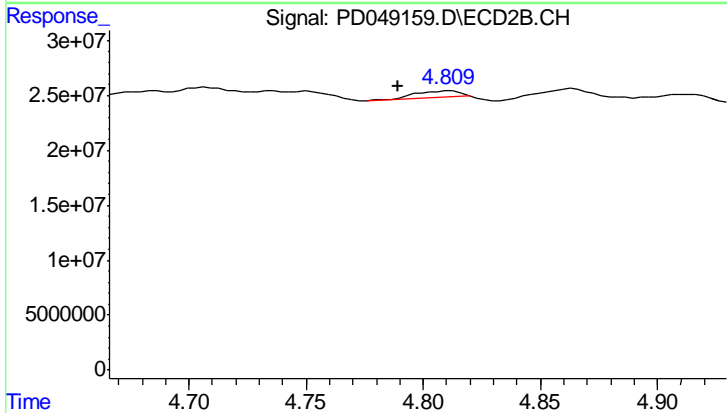
#5 Aldrin  
 R.T.: 5.463 min  
 Delta R.T.: 0.018 min  
 Response: 61472003  
 Conc: 2.47 ng/ml



#6 beta-BHC

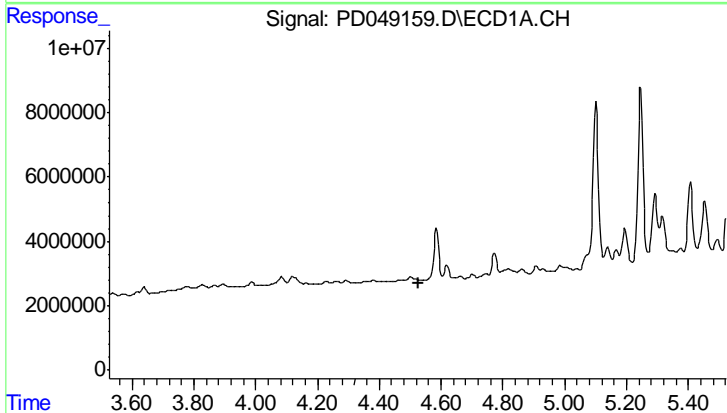
R.T.: 0.000 min  
 Exp R.T.: 4.327 min  
 Response: 0  
 Conc: N.D.

Instrument :  
 ECD\_D  
 ClientSampled :  
 A3YZ5



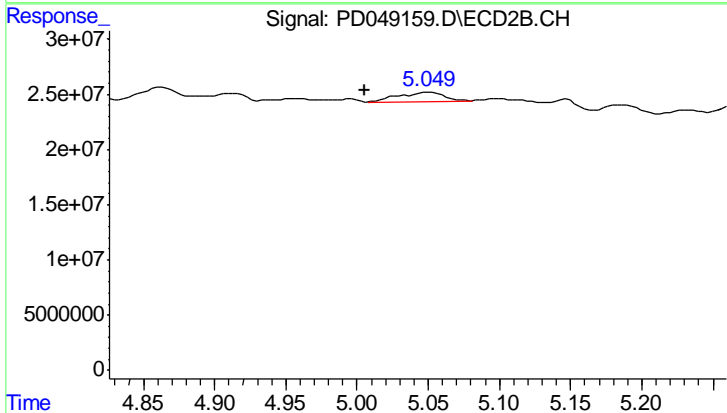
#6 beta-BHC

R.T.: 4.811 min  
 Delta R.T.: 0.022 min  
 Response: 6871240  
 Conc: 0.66 ng/ml



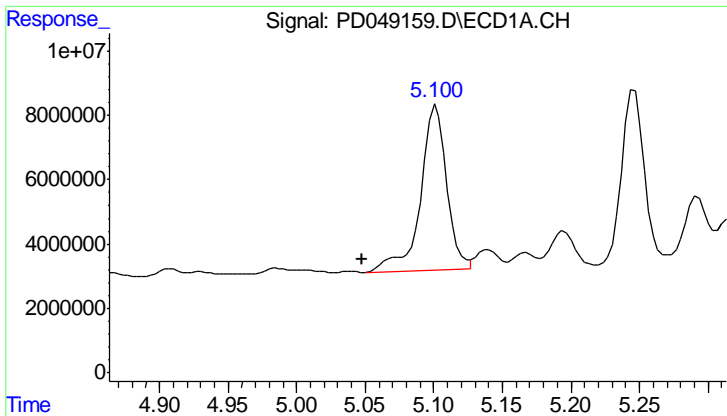
#7 delta-BHC

R.T.: 0.000 min  
 Exp R.T.: 4.526 min  
 Response: 0  
 Conc: N.D.



#7 delta-BHC

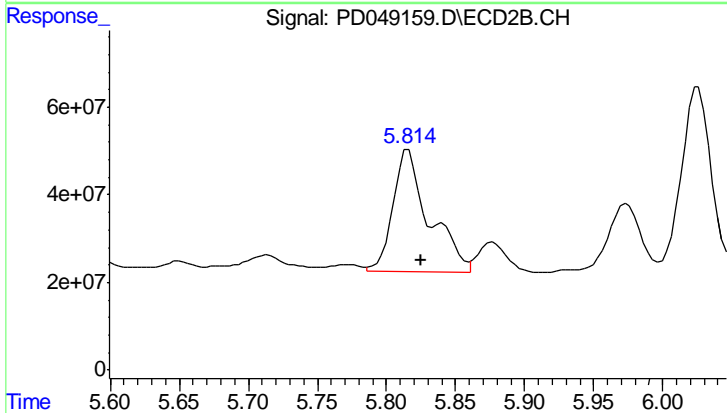
R.T.: 5.051 min  
 Delta R.T.: 0.046 min  
 Response: 17564560  
 Conc: 0.77 ng/ml



#8 Heptachlor epoxide

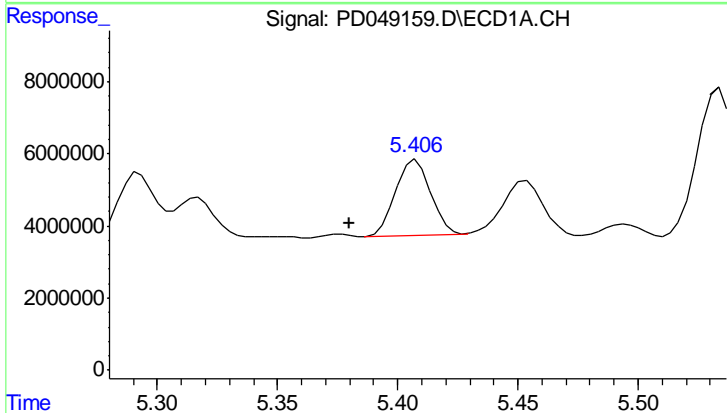
R.T.: 5.102 min  
 Delta R.T.: 0.054 min  
 Response: 67462842  
 Conc: 42.43 ng/ml

Instrument :  
 ECD\_D  
 ClientSampleId :  
 A3YZ5



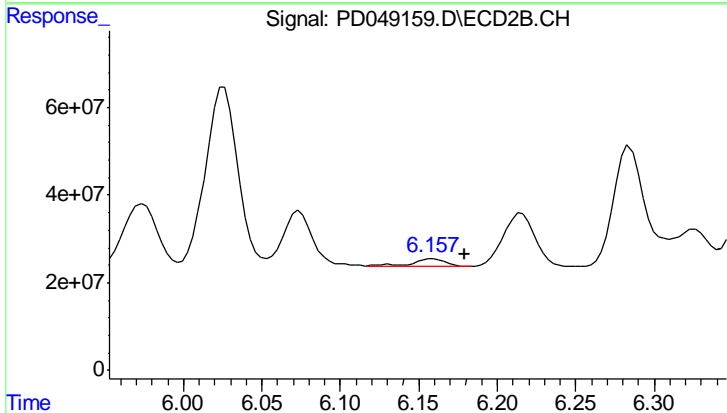
#8 Heptachlor epoxide

R.T.: 5.816 min  
 Delta R.T.: -0.009 min  
 Response: 504680822  
 Conc: 23.13 ng/ml



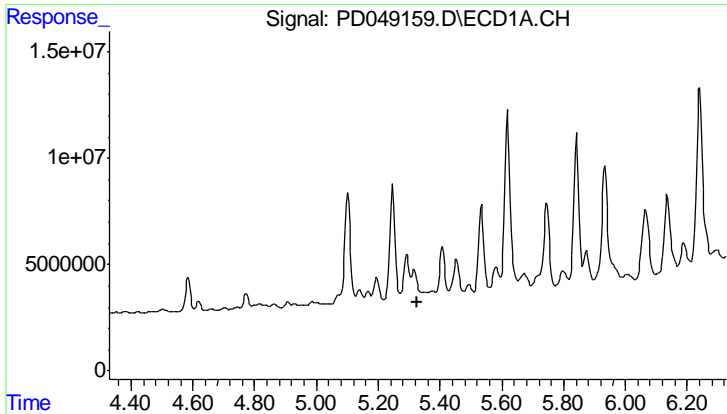
#9 Endosulfan I

R.T.: 5.408 min  
 Delta R.T.: 0.028 min  
 Response: 21227965  
 Conc: 13.64 ng/ml



#9 Endosulfan I

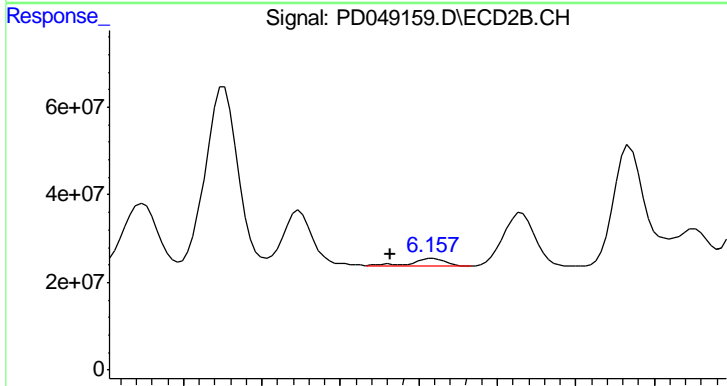
R.T.: 6.159 min  
 Delta R.T.: -0.020 min  
 Response: 24684625  
 Conc: 1.15 ng/ml



#11 cis-Chlordane

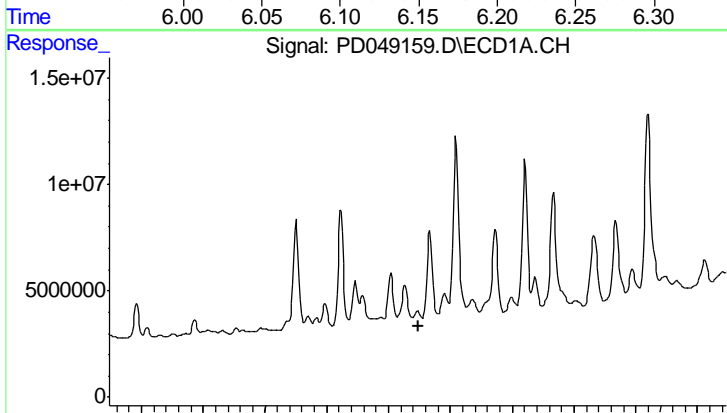
R.T.: 5.317 min  
 Delta R.T.: -0.011 min  
 Response: -1516306  
 Conc: N.D.

Instrument :  
 ECD\_D  
 ClientSampleId :  
 A3YZ5



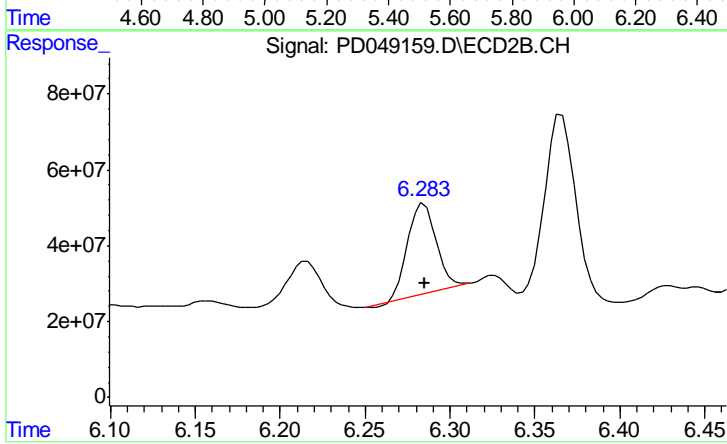
#11 cis-Chlordane

R.T.: 6.159 min  
 Delta R.T.: 0.027 min  
 Response: 24684625  
 Conc: 1.08 ng/ml



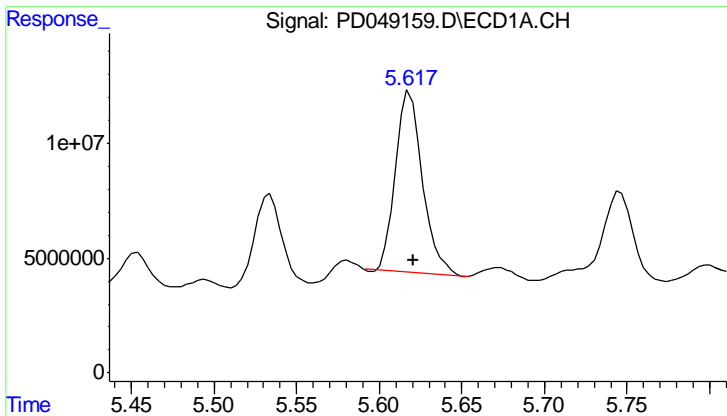
#12 4,4'-DDE

R.T.: 5.495 min  
 Delta R.T.: 0.000 min  
 Response: -8273574  
 Conc: N.D.



#12 4,4'-DDE

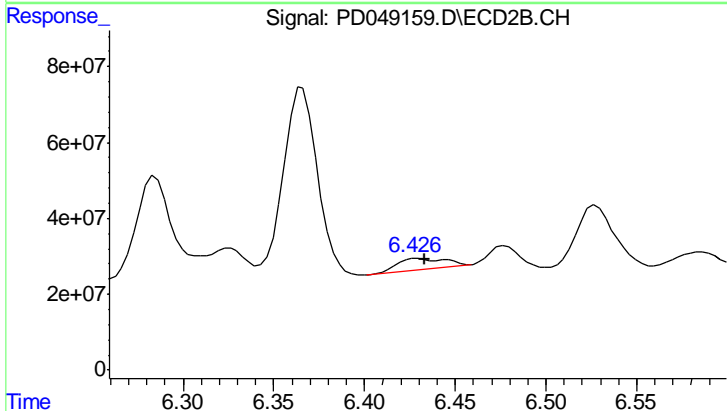
R.T.: 6.285 min  
 Delta R.T.: 0.000 min  
 Response: 274778424  
 Conc: 13.56 ng/ml



#13 Dieldrin

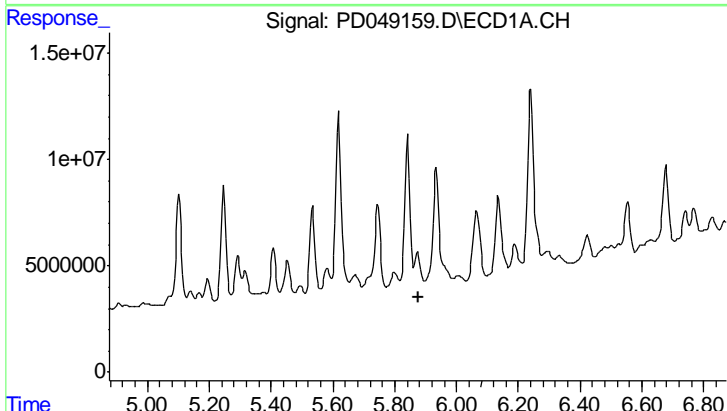
R.T.: 5.619 min  
 Delta R.T.: -0.002 min  
 Response: 89270308  
 Conc: 50.91 ng/ml

Instrument :  
 ECD\_D  
 ClientSampled :  
 A3YZ5



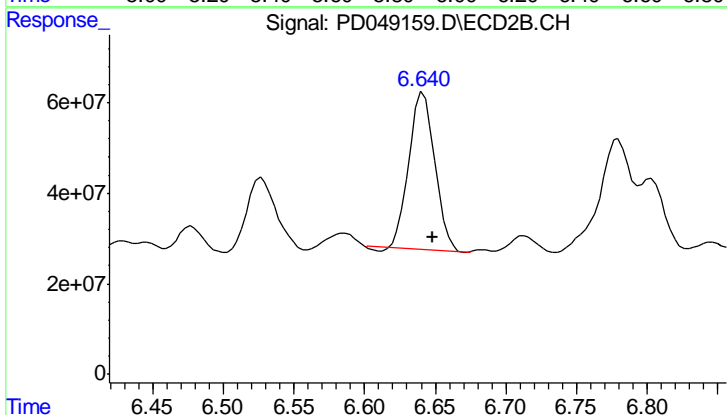
#13 Dieldrin

R.T.: 6.430 min  
 Delta R.T.: -0.003 min  
 Response: 56173938  
 Conc: 2.53 ng/ml



#14 Endrin

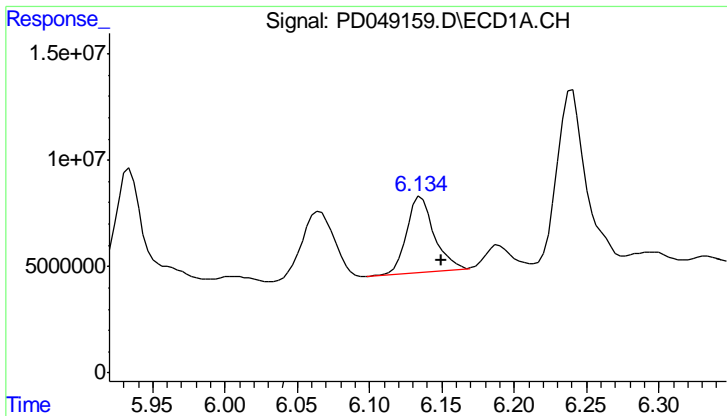
R.T.: 5.874 min  
 Delta R.T.: -0.002 min  
 Response: -57464494  
 Conc: N.D.



#14 Endrin

R.T.: 6.642 min  
 Delta R.T.: -0.007 min  
 Response: 438760707  
 Conc: 24.64 ng/ml

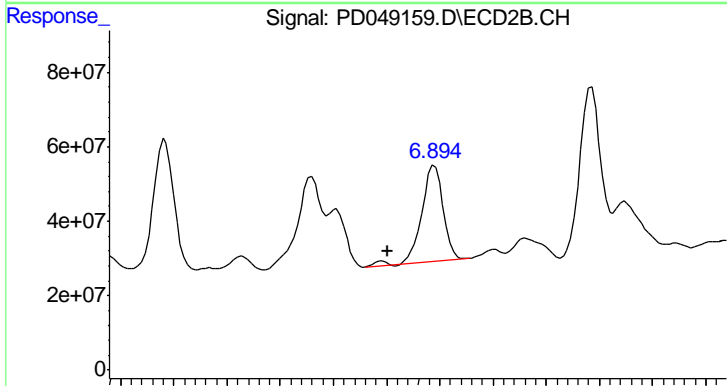




#15 Endosulfan II

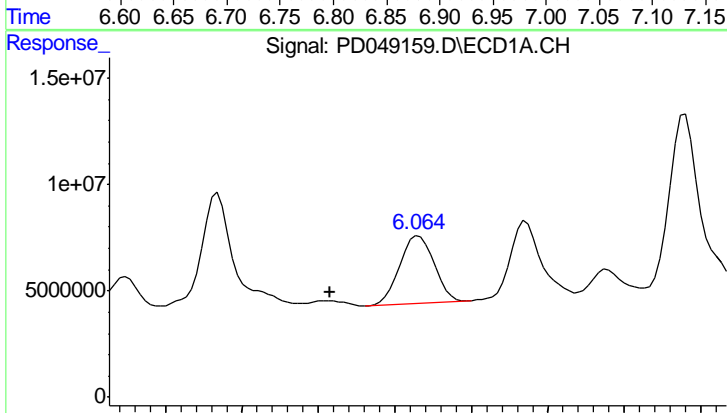
R.T.: 6.135 min  
 Delta R.T.: -0.014 min  
 Response: 46357460  
 Conc: 30.71 ng/ml

Instrument :  
 ECD\_D  
 ClientSampled :  
 A3YZ5



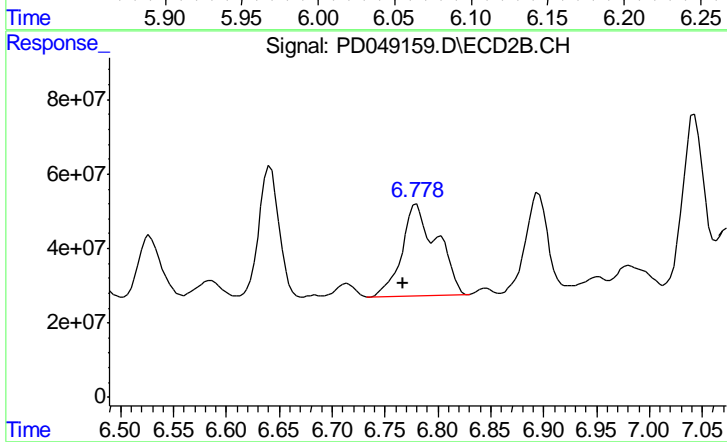
#15 Endosulfan II

R.T.: 6.895 min  
 Delta R.T.: 0.044 min  
 Response: 361308873  
 Conc: 18.93 ng/ml



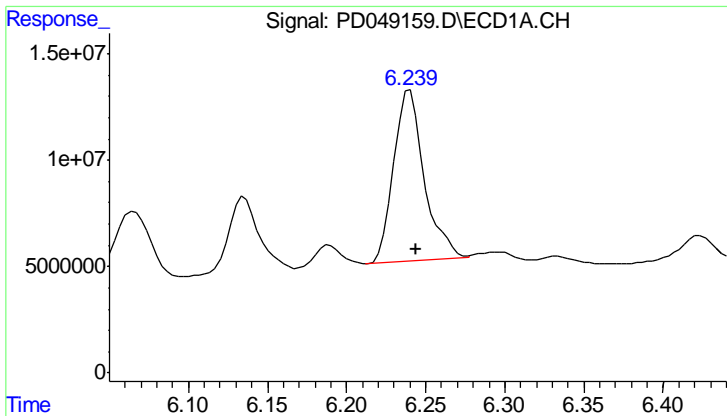
#16 4,4'-DDD

R.T.: 6.066 min  
 Delta R.T.: 0.058 min  
 Response: 49537007  
 Conc: 34.74 ng/ml



#16 4,4'-DDD

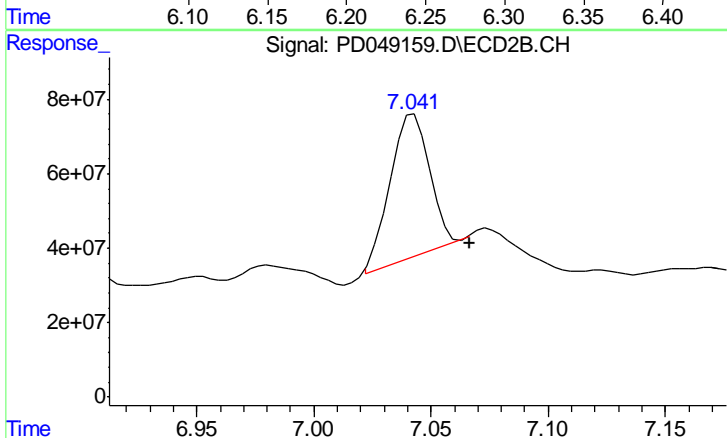
R.T.: 6.780 min  
 Delta R.T.: 0.013 min  
 Response: 567104246  
 Conc: 37.40 ng/ml



#17 4,4'-DDT

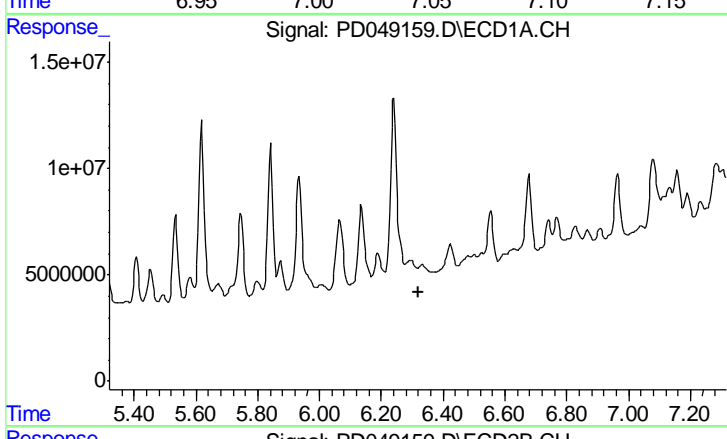
R.T.: 6.240 min  
 Delta R.T.: -0.004 min  
 Response: 107525039  
 Conc: 72.83 ng/ml

Instrument :  
 ECD\_D  
 ClientSampled :  
 A3YZ5



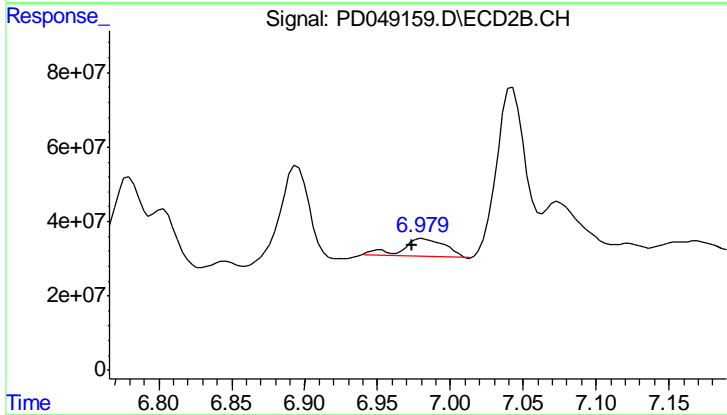
#17 4,4'-DDT

R.T.: 7.043 min  
 Delta R.T.: -0.024 min  
 Response: 450524156  
 Conc: 27.94 ng/ml



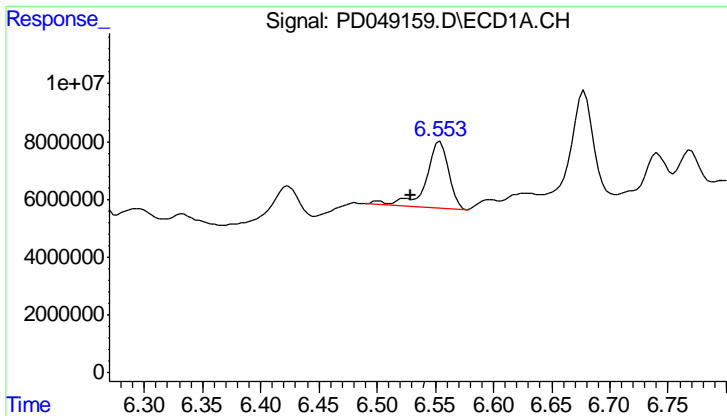
#18 Endrin aldehyde

R.T.: 0.000 min  
 Exp R.T. : 6.319 min  
 Response: 0  
 Conc: N.D.



#18 Endrin aldehyde

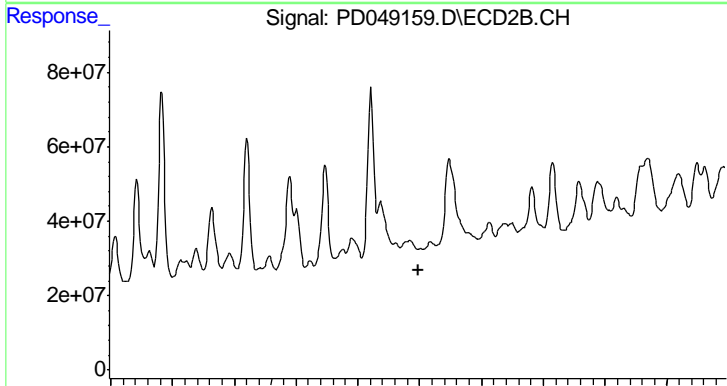
R.T.: 6.982 min  
 Delta R.T.: 0.009 min  
 Response: 97182038  
 Conc: 6.54 ng/ml



#19 Endosulfan Sulfate

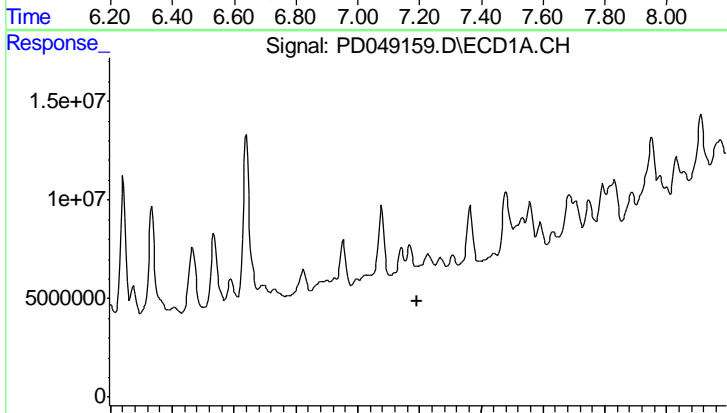
R.T.: 6.554 min  
 Delta R.T.: 0.025 min  
 Response: 31650044  
 Conc: 22.99 ng/ml

Instrument :  
 ECD\_D  
 ClientSampleId :  
 A3YZ5



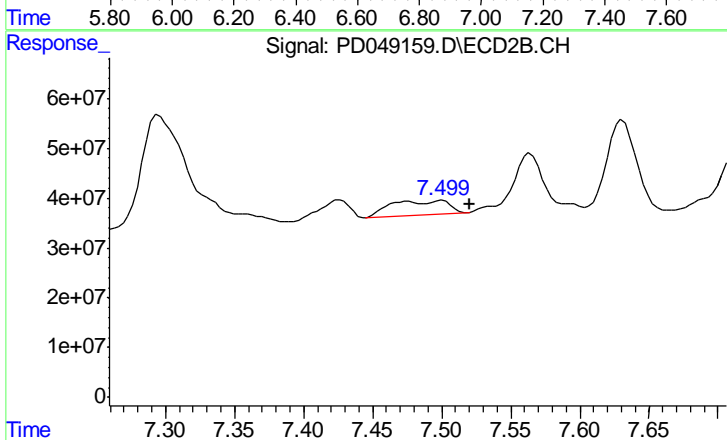
#19 Endosulfan Sulfate

R.T.: 0.000 min  
 Exp R.T.: 7.195 min  
 Response: 0  
 Conc: N.D.



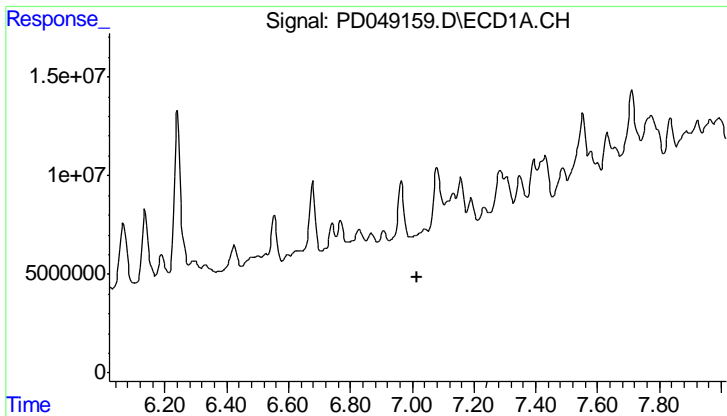
#20 Methoxychlor

R.T.: 6.828 min  
 Delta R.T.: 0.034 min  
 Response: -3339814  
 Conc: N.D.



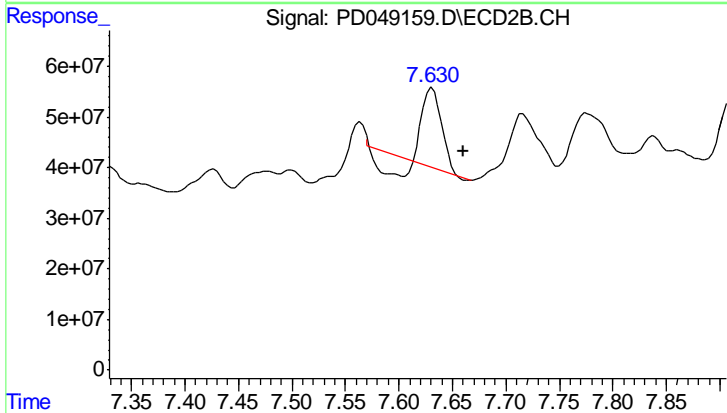
#20 Methoxychlor

R.T.: 7.499 min  
 Delta R.T.: -0.021 min  
 Response: 84142683  
 Conc: 12.29 ng/ml

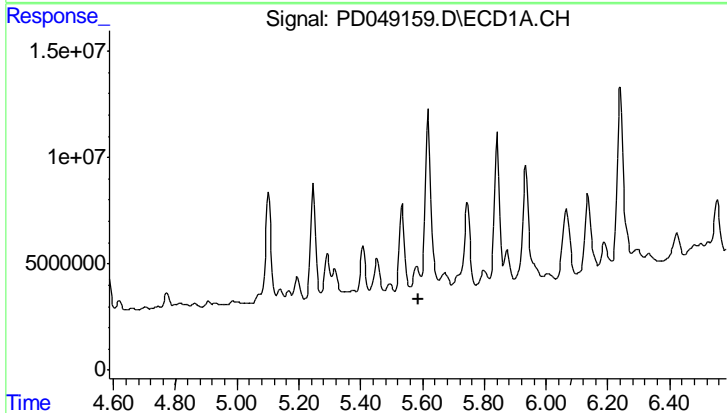


#21 Endrin ketone  
 R.T.: 7.042 min  
 Delta R.T.: 0.025 min  
 Response: -8911529  
 Conc: N.D.

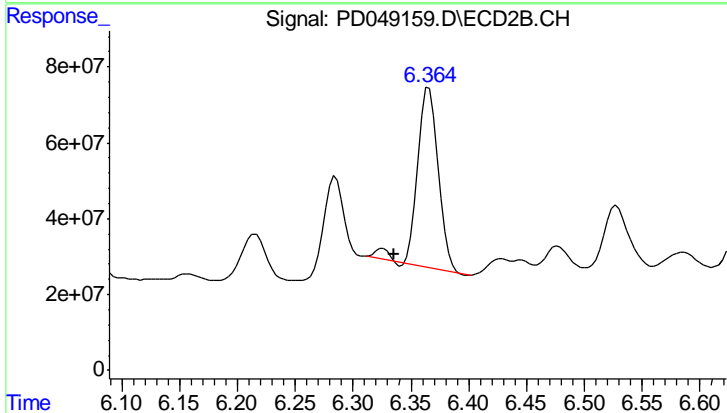
Instrument :  
 ECD\_D  
 ClientSampleId :  
 A3YZ5



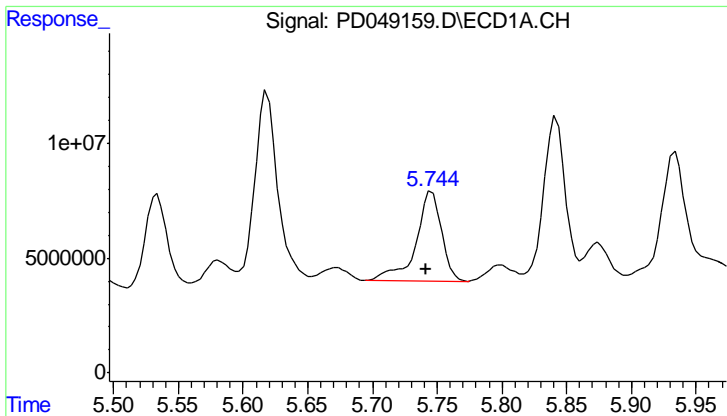
#21 Endrin ketone  
 R.T.: 7.631 min  
 Delta R.T.: -0.029 min  
 Response: 160982086  
 Conc: 9.72 ng/ml



#22 Toxaphene-1  
 R.T.: 5.581 min  
 Delta R.T.: -0.004 min  
 Response: -30799089  
 Conc: N.D.

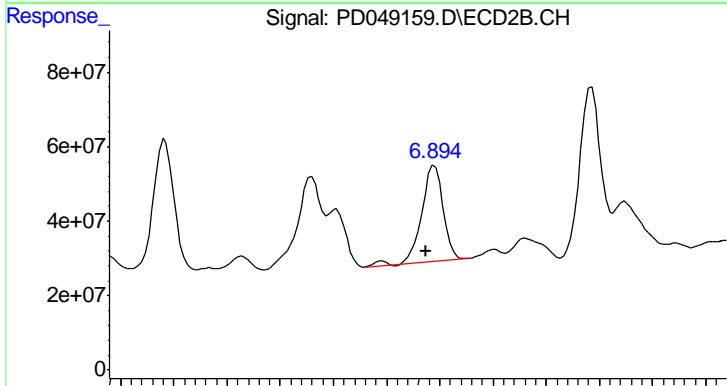


#22 Toxaphene-1  
 R.T.: 6.366 min  
 Delta R.T.: 0.031 min  
 Response: 608787587  
 Conc: 6189.49 ng/ml

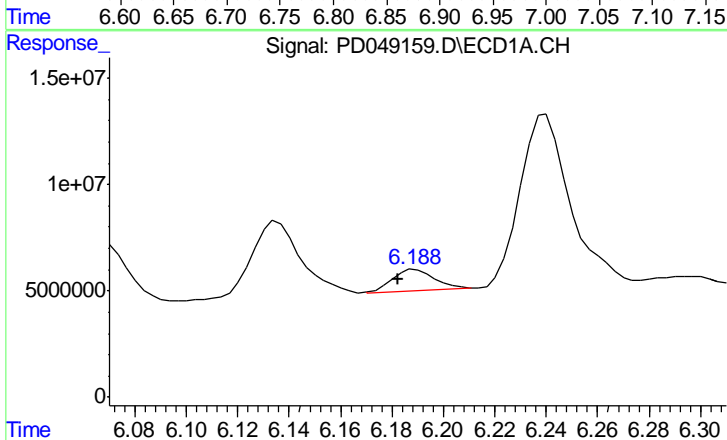


#23 Toxaphene-2  
 R.T.: 5.746 min  
 Delta R.T.: 0.004 min  
 Response: 53500845  
 Conc: 5214.70 ng/ml

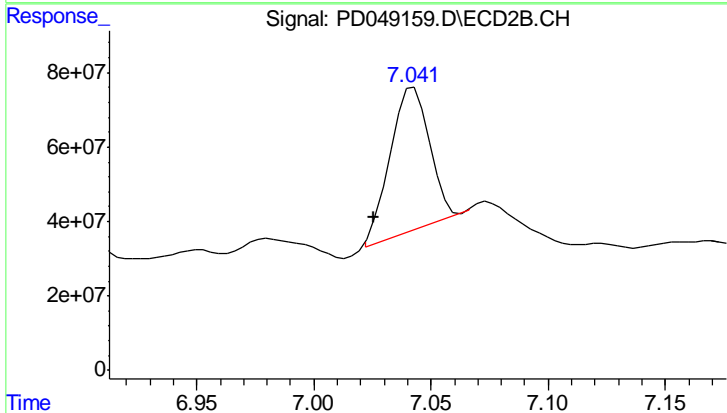
Instrument :  
 ECD\_D  
 ClientSampleId :  
 A3YZ5



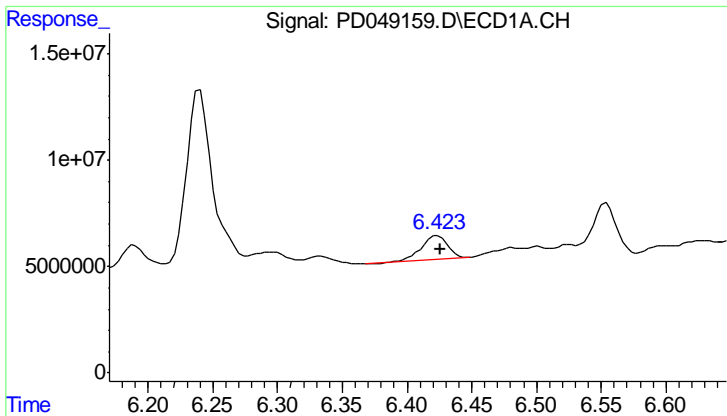
#23 Toxaphene-2  
 R.T.: 6.895 min  
 Delta R.T.: 0.007 min  
 Response: 361308873  
 Conc: 603.48 ng/ml



#24 Toxaphene-3  
 R.T.: 6.189 min  
 Delta R.T.: 0.007 min  
 Response: 11758638  
 Conc: 447.10 ng/ml

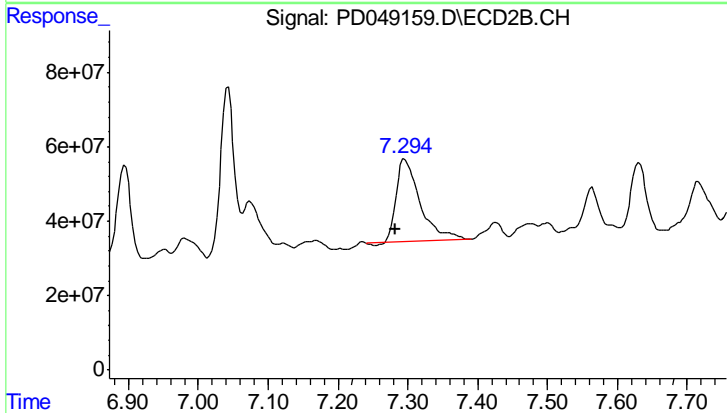


#24 Toxaphene-3  
 R.T.: 7.043 min  
 Delta R.T.: 0.017 min  
 Response: 450524156  
 Conc: 2439.38 ng/ml

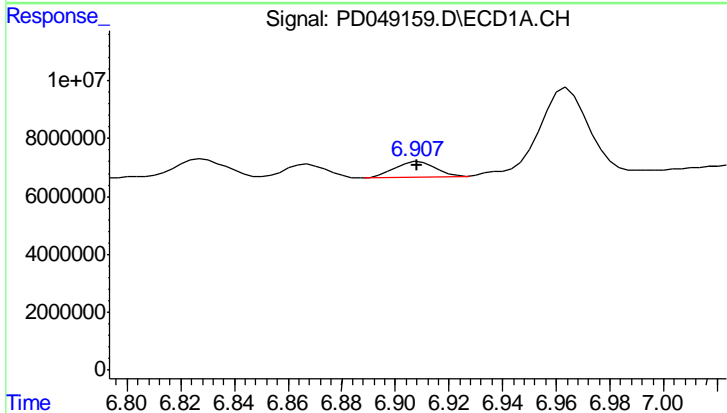


#25 Toxaphene-4  
 R.T.: 6.424 min  
 Delta R.T.: -0.002 min  
 Response: 16292424  
 Conc: 576.71 ng/ml

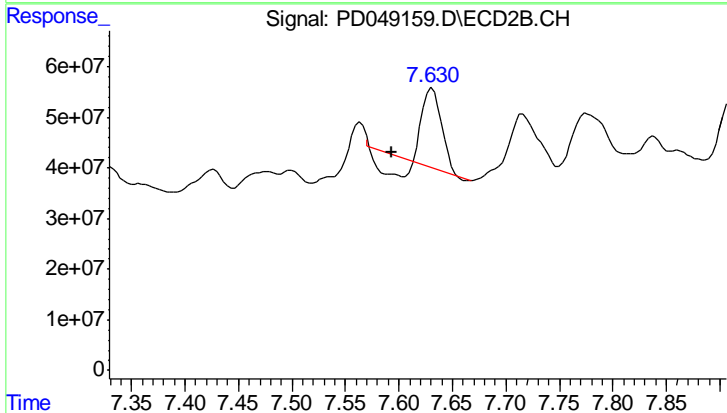
Instrument :  
 ECD\_D  
 ClientSampleId :  
 A3YZ5



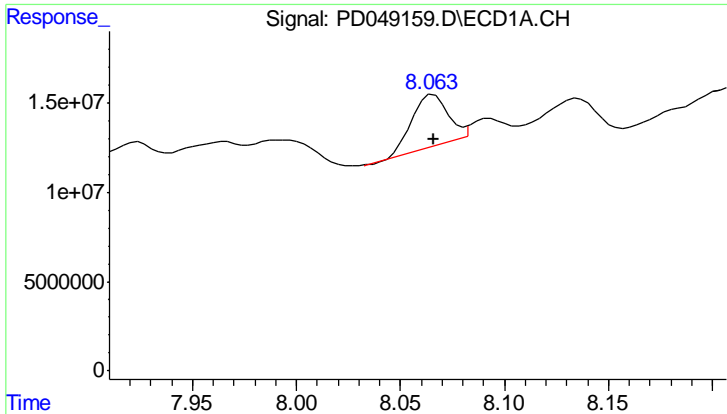
#25 Toxaphene-4  
 R.T.: 7.297 min  
 Delta R.T.: 0.015 min  
 Response: 526498259  
 Conc: 4486.90 ng/ml



#26 Toxaphene-5  
 R.T.: 6.909 min  
 Delta R.T.: 0.000 min  
 Response: 5557838  
 Conc: 163.72 ng/ml



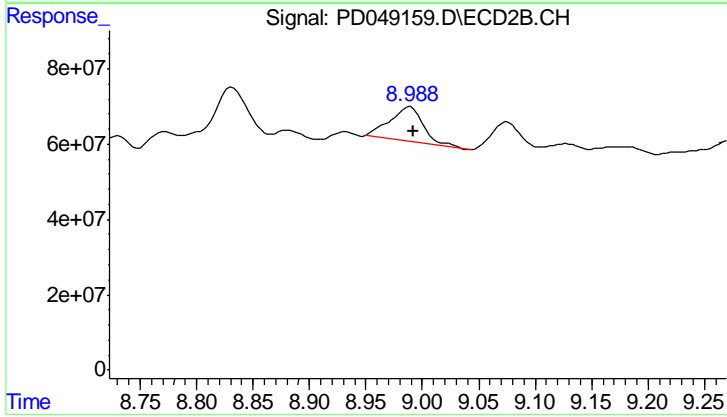
#26 Toxaphene-5  
 R.T.: 7.631 min  
 Delta R.T.: 0.038 min  
 Response: 160982086  
 Conc: 827.47 ng/ml



#27 Decachlorobiphenyl

R.T.: 8.066 min  
Delta R.T.: 0.000 min  
Response: 33160367  
Conc: 23.03 ng/ml

Instrument :  
ECD\_D  
ClientSampleId :  
A3YZ5



#27 Decachlorobiphenyl

R.T.: 8.989 min  
Delta R.T.: -0.004 min  
Response: 189803099  
Conc: 11.72 ng/ml