

Data Path : Z:\pestpcbsrv\HPCHEM1\ECD_D\Data\PD091119\
 Data File : PD054478.D
 Signal(s) : Signal #1: ECD1A.CH Signal #2: ECD2B.CH
 Acq On : 11 Sep 2019 18:37
 Operator : SG\AJ
 Sample : K4717-12
 Misc :
 ALS Vial : 19 Sample Multiplier: 1

Instrument :
 ECD_D
 ClientSampleID :
 C0AB5

Integration File signal 1: autoint1.e
 Integration File signal 2: autoint2.e
 Quant Time: Sep 12 00:52:51 2019
 Quant Method : Z:\pestpcbsrv\HPCHEM1\ECD_D\Method\PD090419CLP.M
 Quant Title : GC Extractables
 QLast Update : Thu Sep 05 08:40:10 2019
 Response via : Initial Calibration
 Integrator: ChemStation 6890 Scale Mode: Large solvent peaks clipped

Volume Inj. : 1 µl
 Signal #1 Phase : ZB-MR2 Signal #2 Phase: ZB-MR1
 Signal #1 Info : 30M x 0.32mm x0.2 Signal #2 Info : 30M x 0.32mm x 0.50µm

Compound	RT#1	RT#2	Resp#1	Resp#2	ng/ml	ng/ml

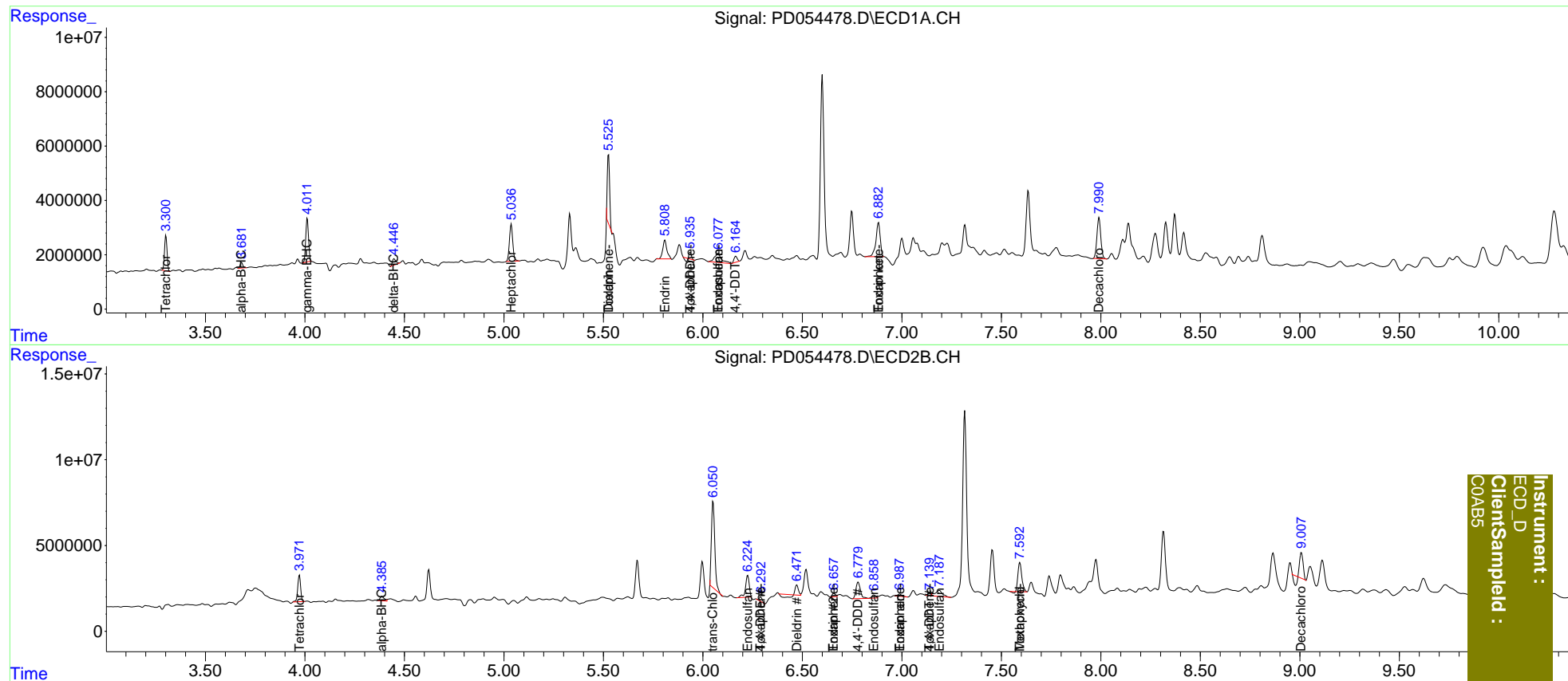
System Monitoring Compounds						
1) SA Tetrachlo...	3.302	3.972	11486031	15842626	16.251	16.052
2) SA Decachlor...	7.991	9.008	20403564	14490418	30.149	15.489 #
Target Compounds						
2) A alpha-BHC	3.682f	4.386f	2014064	4014446	1.854	2.692 #
3) MA gamma-BHC...	4.012	0.000	15482715	0	15.692	N.D. #
7) B delta-BHC	4.448	5.050f	2992243	-1012967	2.698	N.D. #
8) B Heptachlo...	5.037f	0.000	15803334	0	17.639	N.D. #
9) A Endosulfan I	5.331	6.226	-1189679	16668852	N.D.	13.410
10) B trans-Chl...	0.000	6.051	0	58094844	N.D.	42.067
12) B 4,4'-DDE	0.000	6.290	0	2850841	N.D.	2.062
13) MA Dieldrin	5.526	6.472	20365488	1033422	21.801	0.767 #
14) MA Endrin	5.809	6.659	10100362	2365527	13.152	2.315 #
15) B Endosulfa...	6.078	6.860	8052754	2583551	9.669	2.073 #
16) A 4,4'-DDD	5.936	6.781	1325420	15029407	1.915	14.103 #
17) MA 4,4'-DDT	6.166	7.139f	2400216	1520106	3.815	1.463 #
18) B Endrin al...	0.000	6.989	0	1751923	N.D.	1.736
19) B Endosulfa...	0.000	7.188	0	8904220	N.D.	7.803
20) A Methoxychlor	0.000	7.593f	0	22885773	N.D.	43.636
21) B Endrin ke...	6.883f	0.000	18852270	0	21.899	N.D. #
22) Toxaphene-1	5.526	6.290	20365488	2850841	3878.552	449.111 #
24) Toxaphene-3	5.936	6.989	1325420	1751923	286.730	160.361 #
25) Toxaphene-4	6.078	7.139	8052754	1520106	585.867	50.691 #
26) Toxaphene-5	6.883	7.593	18852270	22885773	1148.726	1329.308

(f)=RT Delta > 1/2 Window (#)=Amounts differ by > 25% (m)=manual int.

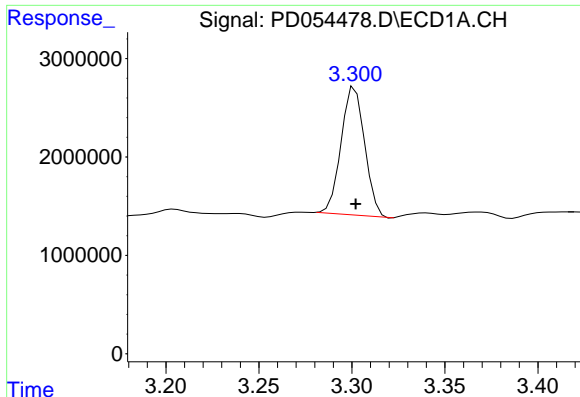
Data Path : Z:\pestpcbsrv\HPCHEM1\ECD_D\Data\PD091119\
 Data File : PD054478.D
 Signal(s) : Signal #1: ECD1A.CH Signal #2: ECD2B.CH
 Acq On : 11 Sep 2019 18:37
 Operator : SG\AJ
 Sample : K4717-12
 Misc :
 ALS Vial : 19 Sample Multiplier: 1

Integration File signal 1: autoint1.e
 Integration File signal 2: autoint2.e
 Quant Time: Sep 12 00:52:51 2019
 Quant Method : Z:\pestpcbsrv\HPCHEM1\ECD_D\Method\PD090419CLP.M
 Quant Title : GC Extractables
 QLast Update : Thu Sep 05 08:40:10 2019
 Response via : Initial Calibration
 Integrator: ChemStation 6890 Scale Mode: Large solvent peaks clipped

Volume Inj. : 1 µl
 Signal #1 Phase : ZB-MR2 Signal #2 Phase: ZB-MR1
 Signal #1 Info : 30M x 0.32mm x0.2 Signal #2 Info : 30M x 0.32mm x 0.50µm

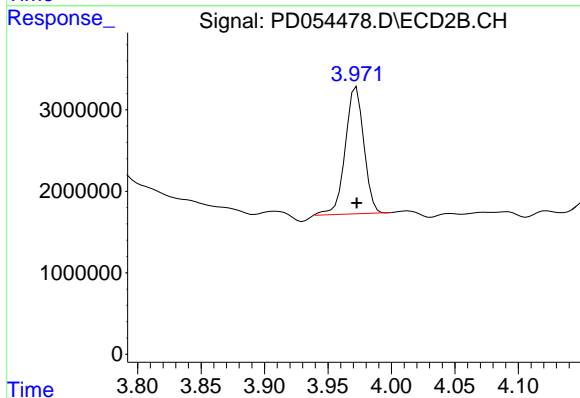


Instrument :
 ECD_D
 Client Sample Id :
 COABS

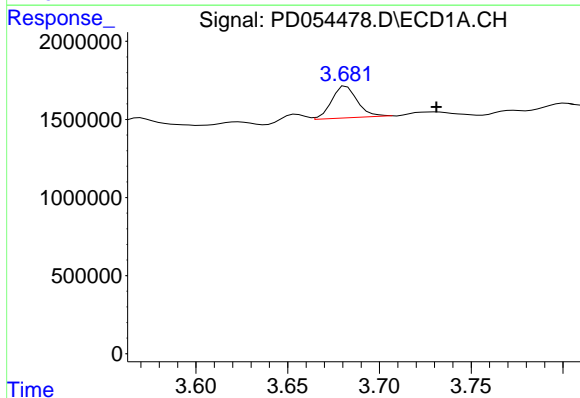


#1 Tetrachloro-m-xylene
 R.T.: 3.302 min
 Delta R.T.: 0.000 min
 Response: 11486031
 Conc: 16.25 ng/ml

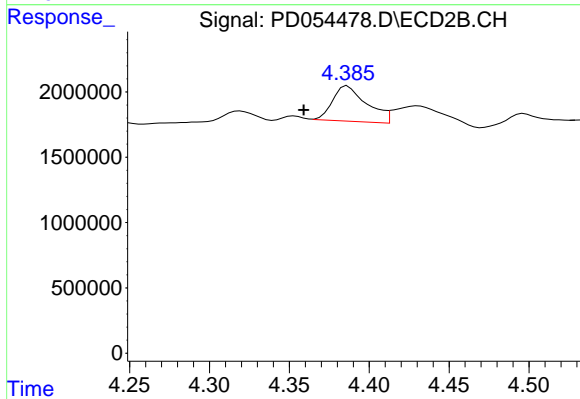
Instrument :
 ECD_D
 ClientSampled :
 C0AB5



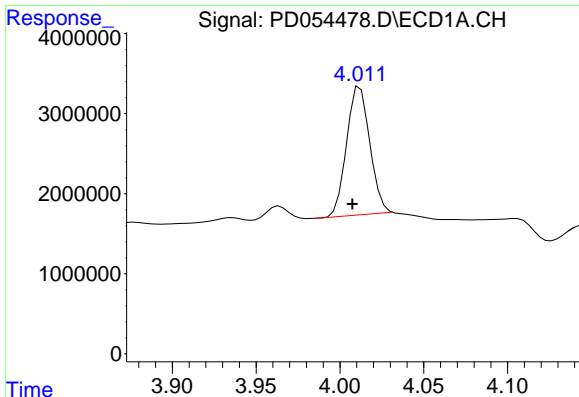
#1 Tetrachloro-m-xylene
 R.T.: 3.972 min
 Delta R.T.: 0.000 min
 Response: 15842626
 Conc: 16.05 ng/ml



#2 alpha-BHC
 R.T.: 3.682 min
 Delta R.T.: -0.049 min
 Response: 2014064
 Conc: 1.85 ng/ml



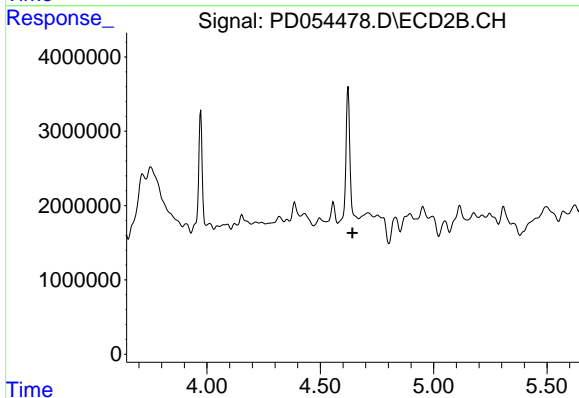
#2 alpha-BHC
 R.T.: 4.386 min
 Delta R.T.: 0.027 min
 Response: 4014446
 Conc: 2.69 ng/ml



#3 gamma-BHC (Lindane)

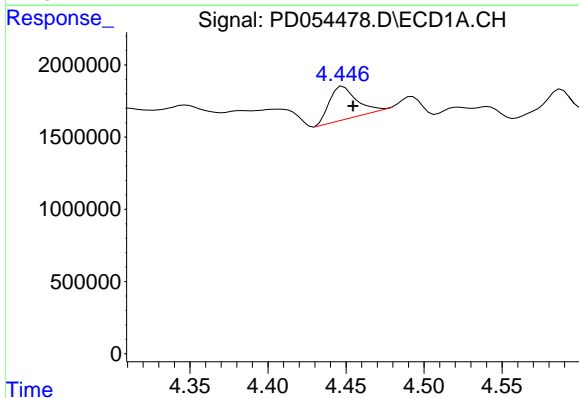
R.T.: 4.012 min
 Delta R.T.: 0.005 min
 Response: 15482715
 Conc: 15.69 ng/ml

Instrument :
 ECD_D
 ClientSampled :
 C0AB5



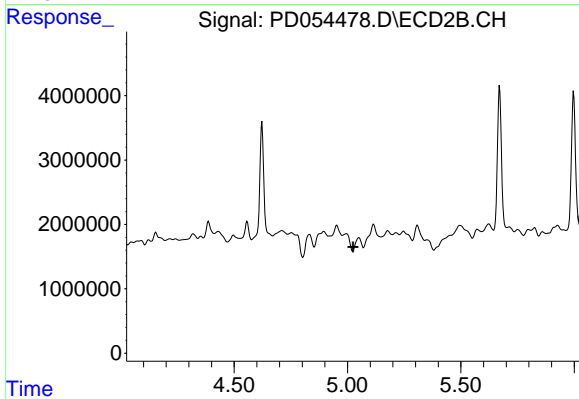
#3 gamma-BHC (Lindane)

R.T.: 0.000 min
 Exp R.T. : 4.642 min
 Response: 0
 Conc: N.D.



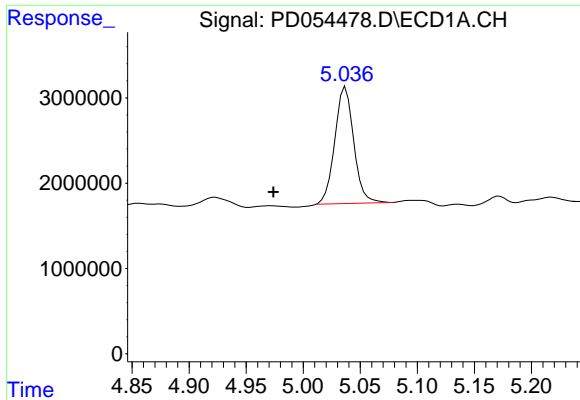
#7 delta-BHC

R.T.: 4.448 min
 Delta R.T.: -0.006 min
 Response: 2992243
 Conc: 2.70 ng/ml



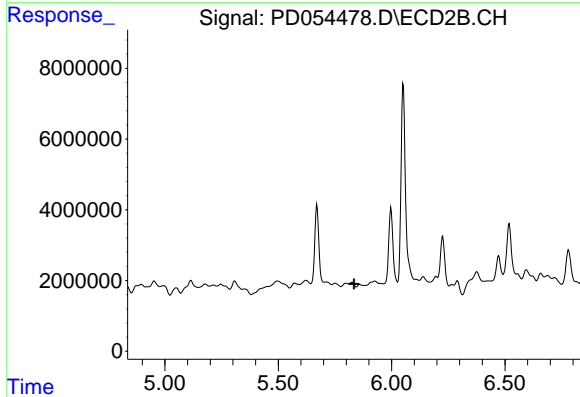
#7 delta-BHC

R.T.: 5.050 min
 Delta R.T.: 0.025 min
 Response: -1012967
 Conc: N.D.

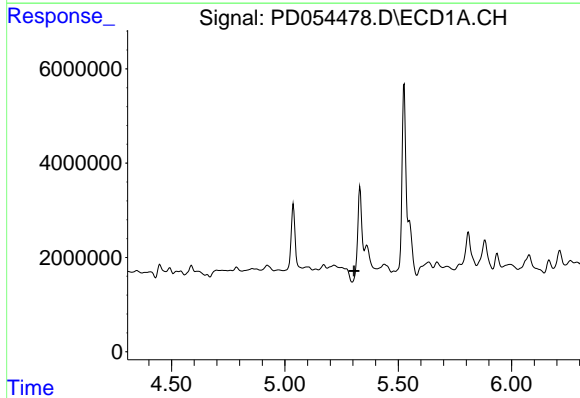


#8 Heptachlor epoxide
 R.T.: 5.037 min
 Delta R.T.: 0.063 min
 Response: 15803334
 Conc: 17.64 ng/ml

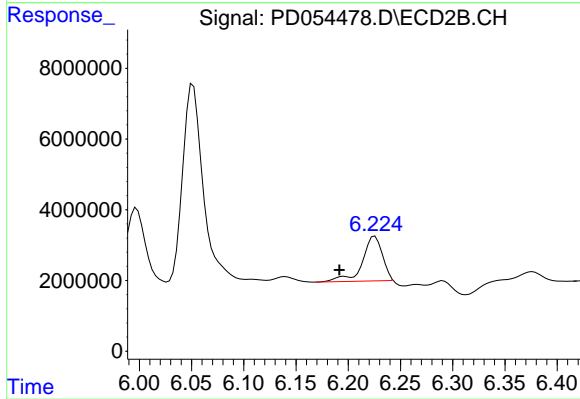
Instrument :
 ECD_D
 ClientSampleId :
 C0AB5



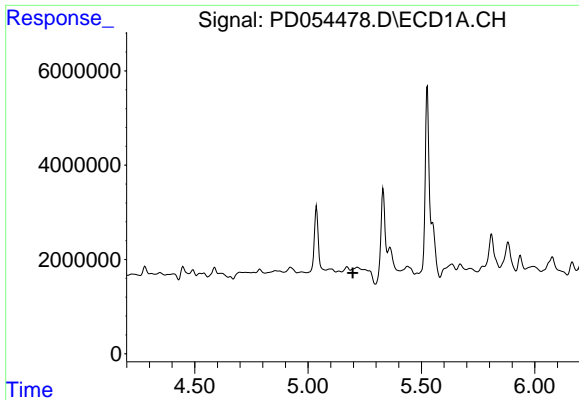
#8 Heptachlor epoxide
 R.T.: 0.000 min
 Exp R.T. : 5.834 min
 Response: 0
 Conc: N.D.



#9 Endosulfan I
 R.T.: 5.331 min
 Delta R.T.: 0.026 min
 Response: -1189679
 Conc: N.D.



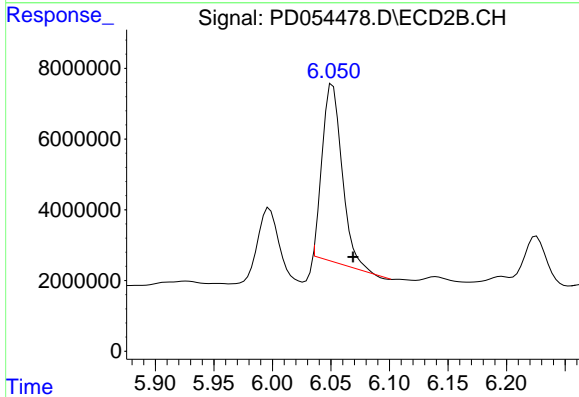
#9 Endosulfan I
 R.T.: 6.226 min
 Delta R.T.: 0.034 min
 Response: 16668852
 Conc: 13.41 ng/ml



#10 trans-Chlordane

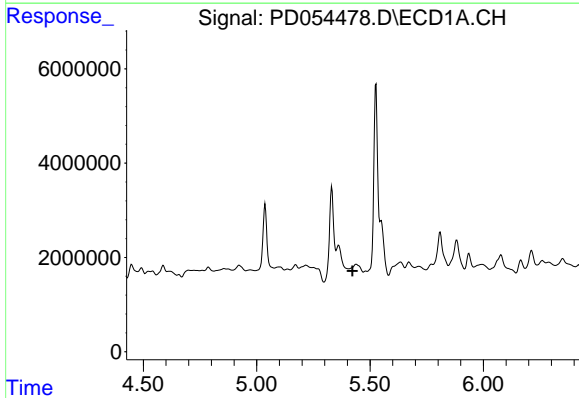
R.T.: 0.000 min
 Exp R.T.: 5.197 min
 Response: 0
 Conc: N.D.

Instrument :
 ECD_D
 ClientSampled :
 C0AB5



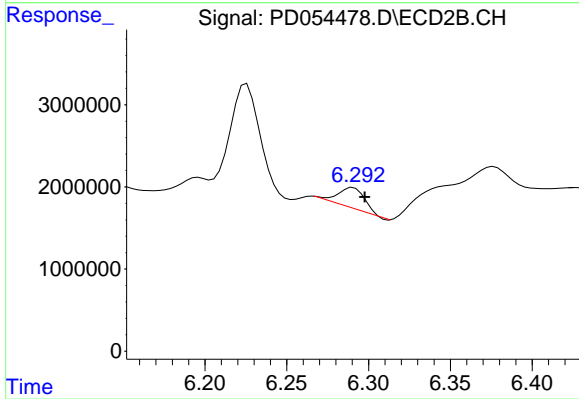
#10 trans-Chlordane

R.T.: 6.051 min
 Delta R.T.: -0.017 min
 Response: 58094844
 Conc: 42.07 ng/ml



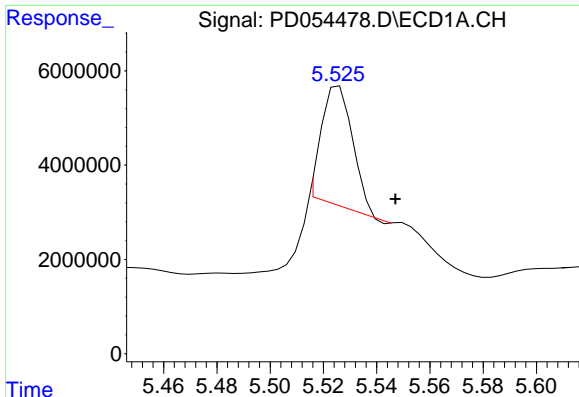
#12 4,4'-DDE

R.T.: 0.000 min
 Exp R.T.: 5.423 min
 Response: 0
 Conc: N.D.



#12 4,4'-DDE

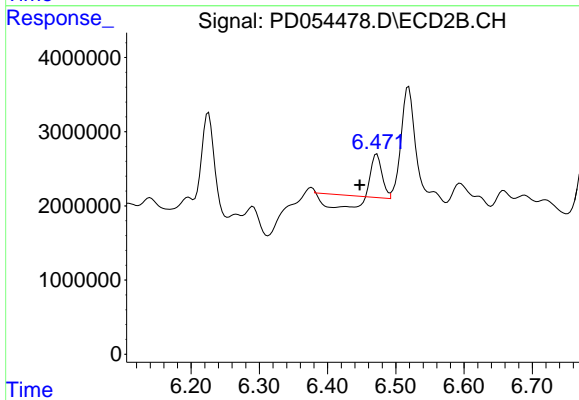
R.T.: 6.290 min
 Delta R.T.: -0.007 min
 Response: 2850841
 Conc: 2.06 ng/ml



#13 Dieldrin

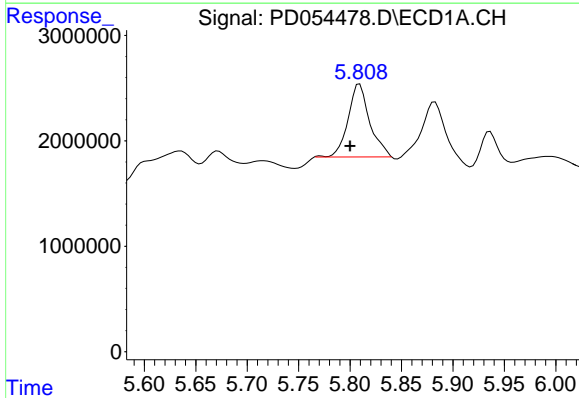
R.T.: 5.526 min
 Delta R.T.: -0.021 min
 Response: 20365488
 Conc: 21.80 ng/ml

Instrument :
 ECD_D
 ClientSampled :
 C0AB5



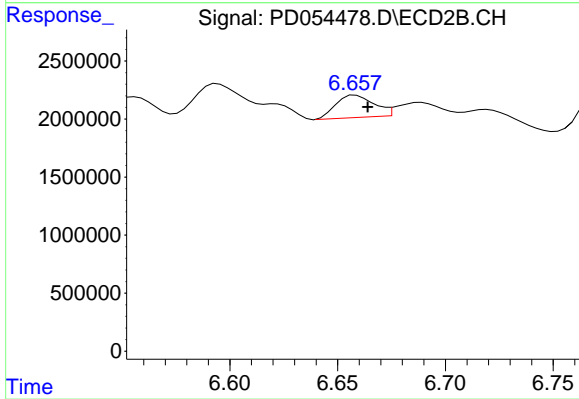
#13 Dieldrin

R.T.: 6.472 min
 Delta R.T.: 0.025 min
 Response: 1033422
 Conc: 0.77 ng/ml



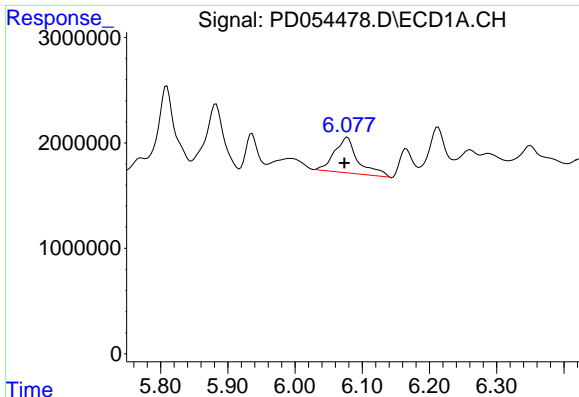
#14 Endrin

R.T.: 5.809 min
 Delta R.T.: 0.009 min
 Response: 10100362
 Conc: 13.15 ng/ml



#14 Endrin

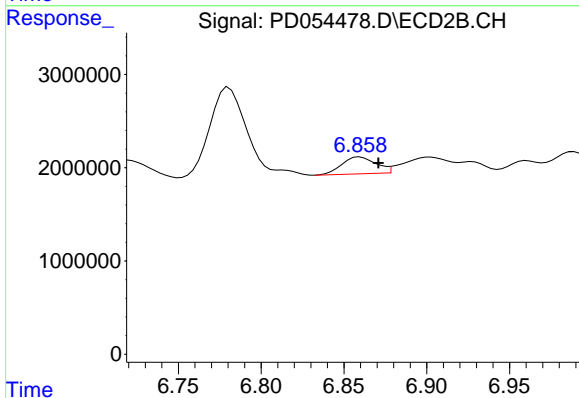
R.T.: 6.659 min
 Delta R.T.: -0.005 min
 Response: 2365527
 Conc: 2.32 ng/ml



#15 Endosulfan II

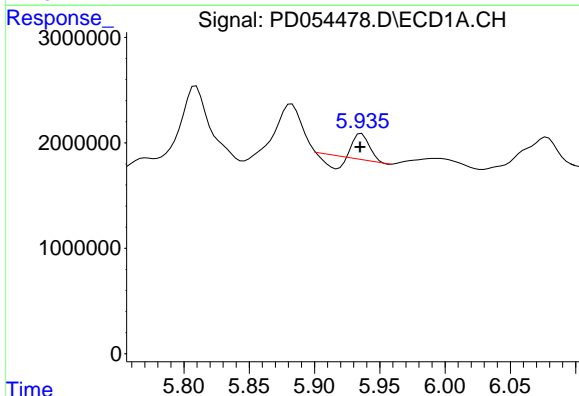
R.T.: 6.078 min
 Delta R.T.: 0.005 min
 Response: 8052754
 Conc: 9.67 ng/ml

Instrument :
 ECD_D
 ClientSampleId :
 C0AB5



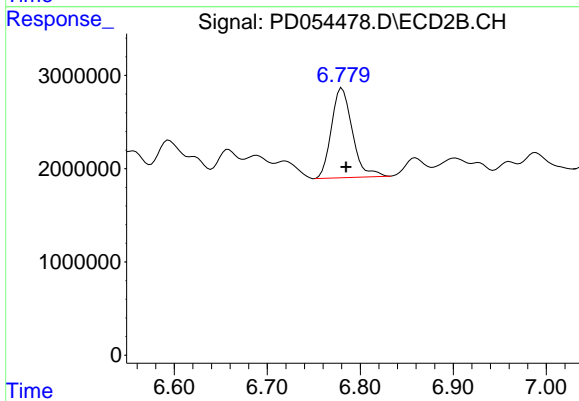
#15 Endosulfan II

R.T.: 6.860 min
 Delta R.T.: -0.011 min
 Response: 2583551
 Conc: 2.07 ng/ml



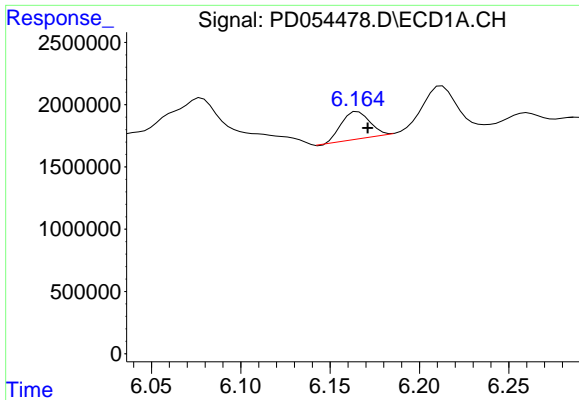
#16 4,4'-DDD

R.T.: 5.936 min
 Delta R.T.: 0.001 min
 Response: 1325420
 Conc: 1.91 ng/ml



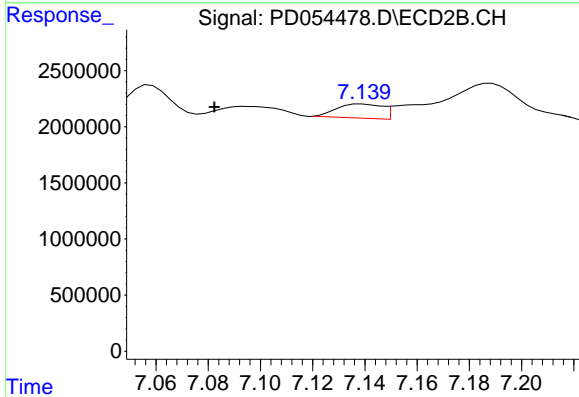
#16 4,4'-DDD

R.T.: 6.781 min
 Delta R.T.: -0.004 min
 Response: 15029407
 Conc: 14.10 ng/ml

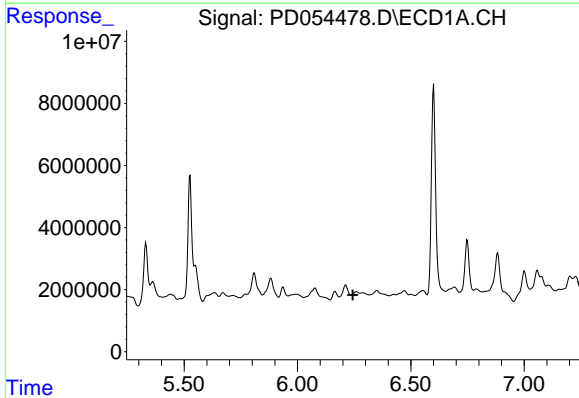


#17 4,4'-DDT
 R.T.: 6.166 min
 Delta R.T.: -0.006 min
 Response: 2400216
 Conc: 3.81 ng/ml

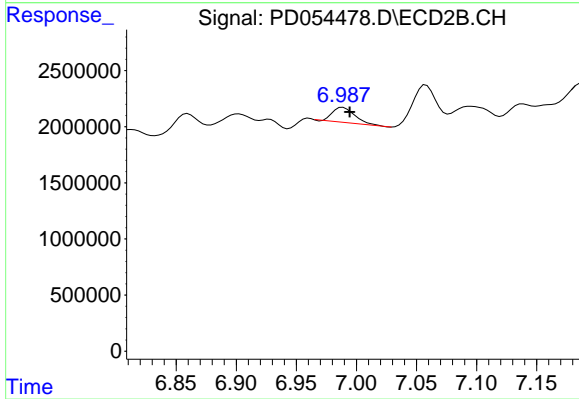
Instrument :
 ECD_D
 ClientSampleId :
 C0AB5



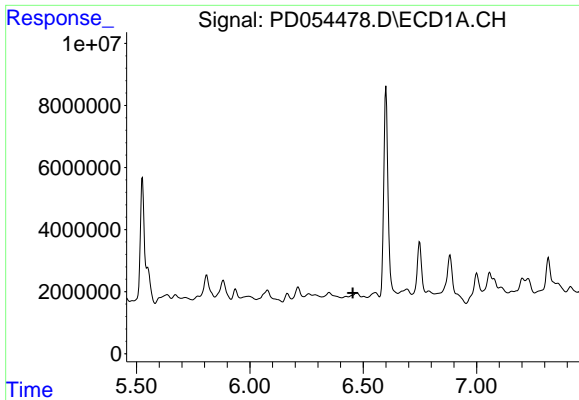
#17 4,4'-DDT
 R.T.: 7.139 min
 Delta R.T.: 0.057 min
 Response: 1520106
 Conc: 1.46 ng/ml



#18 Endrin aldehyde
 R.T.: 0.000 min
 Exp R.T. : 6.243 min
 Response: 0
 Conc: N.D.



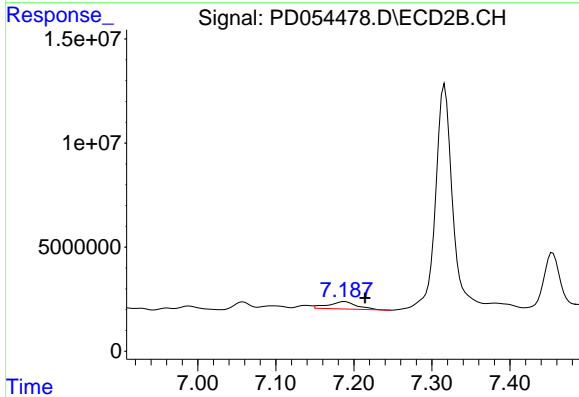
#18 Endrin aldehyde
 R.T.: 6.989 min
 Delta R.T.: -0.005 min
 Response: 1751923
 Conc: 1.74 ng/ml



#19 Endosulfan Sulfate

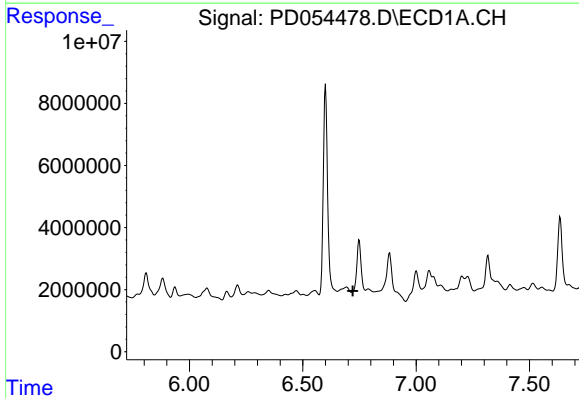
R.T.: 0.000 min
 Exp R.T. : 6.454 min
 Response: 0
 Conc: N.D.

Instrument :
 ECD_D
 ClientSampleId :
 C0AB5



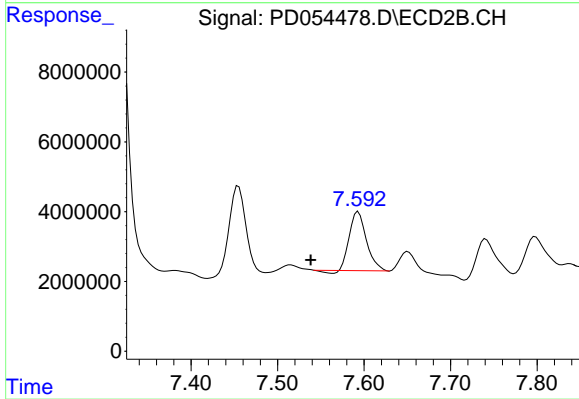
#19 Endosulfan Sulfate

R.T.: 7.188 min
 Delta R.T.: -0.026 min
 Response: 8904220
 Conc: 7.80 ng/ml



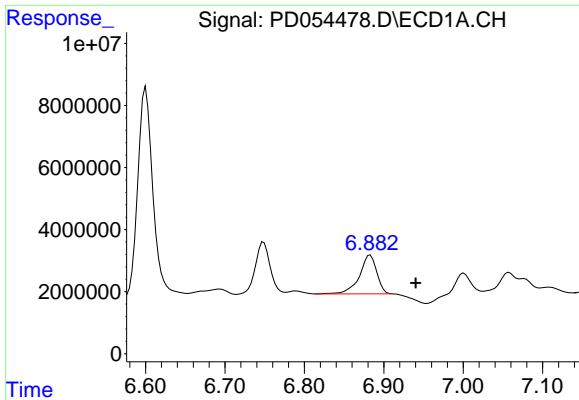
#20 Methoxychlor

R.T.: 0.000 min
 Exp R.T. : 6.721 min
 Response: 0
 Conc: N.D.



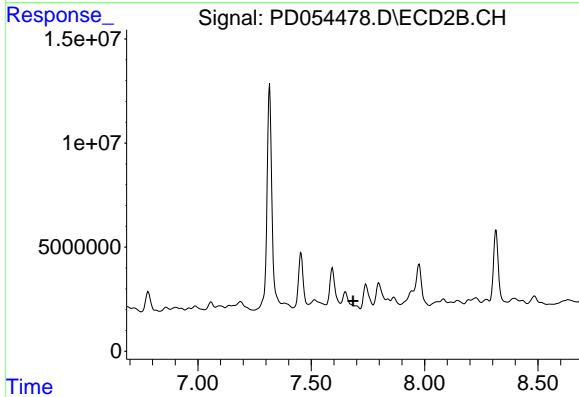
#20 Methoxychlor

R.T.: 7.593 min
 Delta R.T.: 0.055 min
 Response: 22885773
 Conc: 43.64 ng/ml

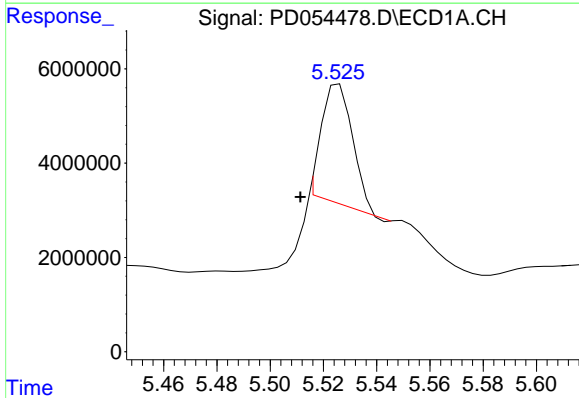


#21 Endrin ketone
 R.T.: 6.883 min
 Delta R.T.: -0.057 min
 Response: 18852270
 Conc: 21.90 ng/ml

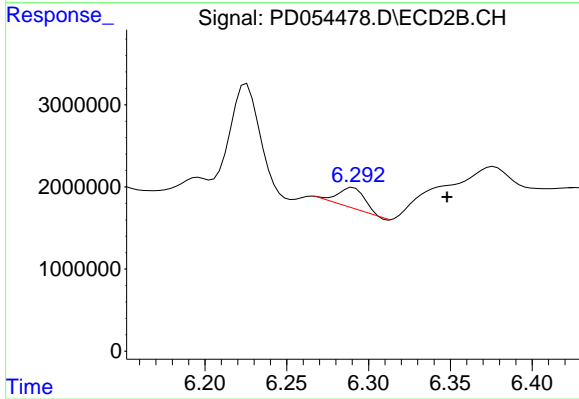
Instrument :
 ECD_D
 ClientSampled :
 C0AB5



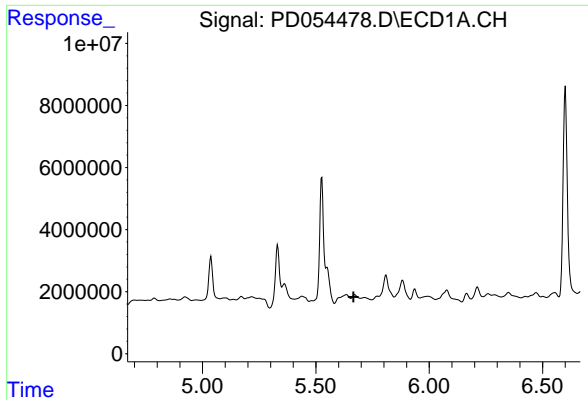
#21 Endrin ketone
 R.T.: 0.000 min
 Exp R.T. : 7.685 min
 Response: 0
 Conc: N.D.



#22 Toxaphene-1
 R.T.: 5.526 min
 Delta R.T.: 0.015 min
 Response: 20365488
 Conc: 3878.55 ng/ml

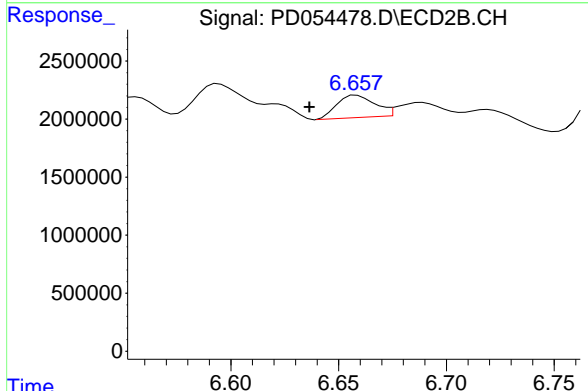


#22 Toxaphene-1
 R.T.: 6.290 min
 Delta R.T.: -0.058 min
 Response: 2850841
 Conc: 449.11 ng/ml

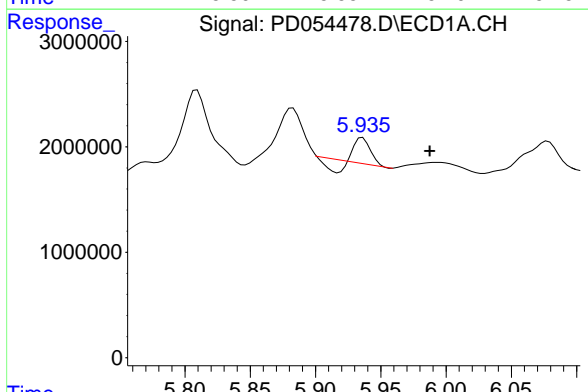


#23 Toxaphene-2
 R.T.: 5.635 min
 Delta R.T.: -0.031 min
 Response: -14977716
 Conc: N.D.

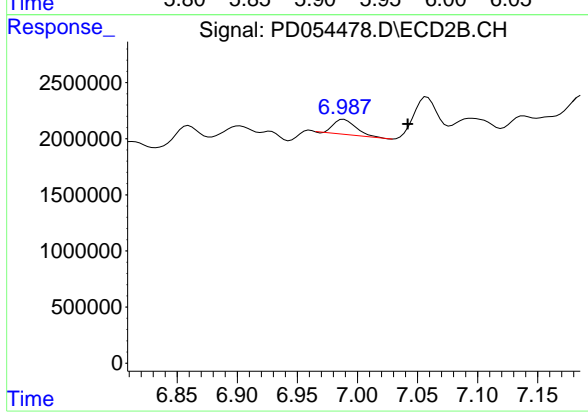
Instrument :
 ECD_D
 ClientSampleId :
 C0AB5



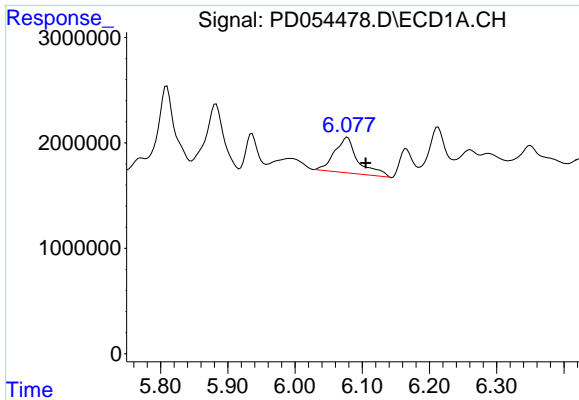
#23 Toxaphene-2
 R.T.: 6.659 min
 Delta R.T.: 0.022 min
 Response: 2365527
 Conc: 288.51 ng/ml



#24 Toxaphene-3
 R.T.: 5.936 min
 Delta R.T.: -0.051 min
 Response: 1325420
 Conc: 286.73 ng/ml

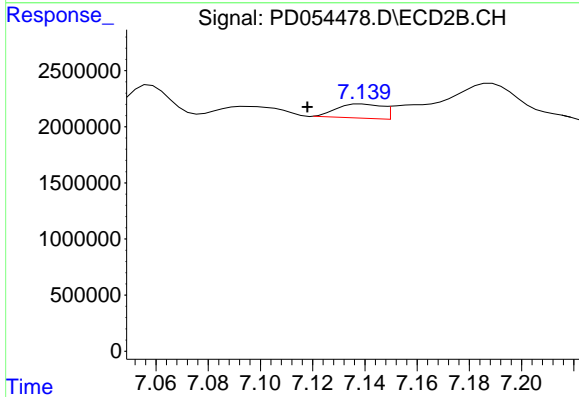


#24 Toxaphene-3
 R.T.: 6.989 min
 Delta R.T.: -0.053 min
 Response: 1751923
 Conc: 160.36 ng/ml

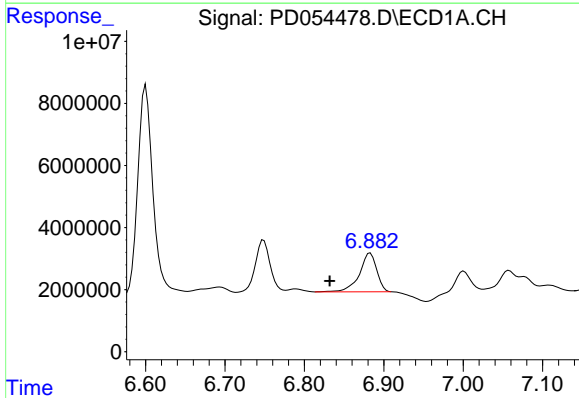


#25 Toxaphene-4
 R.T.: 6.078 min
 Delta R.T.: -0.027 min
 Response: 8052754
 Conc: 585.87 ng/ml

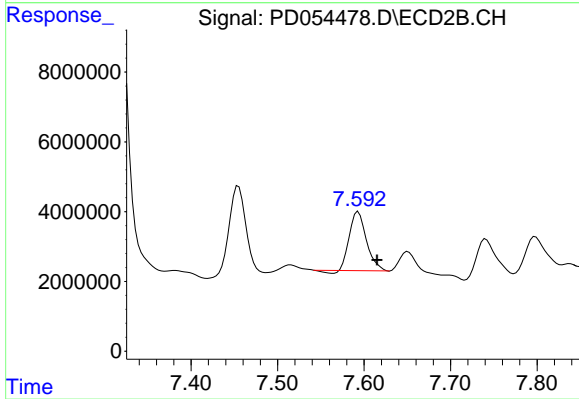
Instrument :
 ECD_D
 ClientSampleId :
 C0AB5



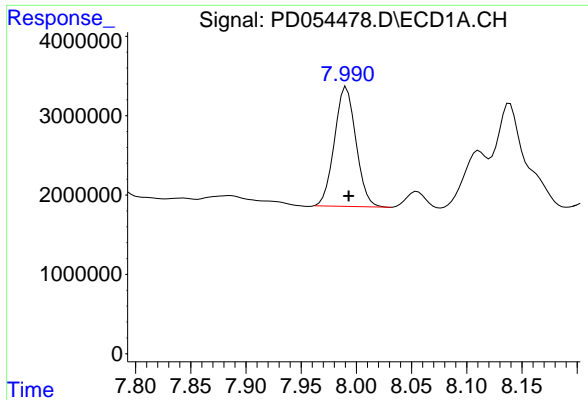
#25 Toxaphene-4
 R.T.: 7.139 min
 Delta R.T.: 0.021 min
 Response: 1520106
 Conc: 50.69 ng/ml



#26 Toxaphene-5
 R.T.: 6.883 min
 Delta R.T.: 0.051 min
 Response: 18852270
 Conc: 1148.73 ng/ml



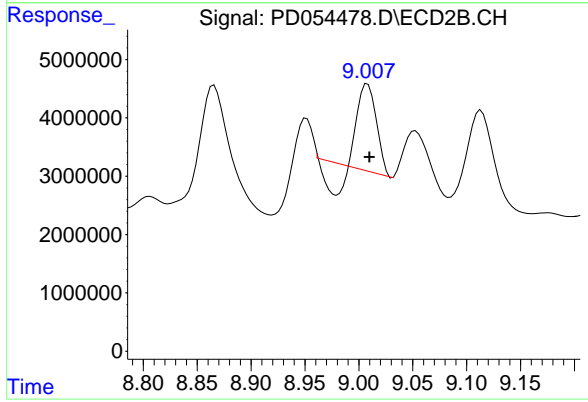
#26 Toxaphene-5
 R.T.: 7.593 min
 Delta R.T.: -0.022 min
 Response: 22885773
 Conc: 1329.31 ng/ml



#27 Decachlorobiphenyl

R.T.: 7.991 min
Delta R.T.: -0.002 min
Response: 20403564
Conc: 30.15 ng/ml

Instrument :
ECD_D
ClientSampleId :
C0AB5



#27 Decachlorobiphenyl

R.T.: 9.008 min
Delta R.T.: -0.002 min
Response: 14490418
Conc: 15.49 ng/ml