

Data Path : Z:\pestpcbsrv\HPCHEM1\ECD\_D\Data\PD091120\  
 Data File : PD059179.D  
 Signal(s) : Signal #1: ECD1A.ch Signal #2: ECD2B.ch  
 Acq On : 11 Sep 2020 11:49  
 Operator : DD\AJ  
 Sample : MDL-W-04  
 Misc :  
 ALS Vial : 16 Sample Multiplier: 1

Instrument :  
 ECD\_D  
 ClientSampled :  
 MDL-W-04

Manual Integrations  
 APPROVED

Ankita  
 9/14/2020 11:05:24 AM

Integration File signal 1: autoint1.e  
 Integration File signal 2: autoint2.e  
 Quant Time: Sep 11 12:02:44 2020  
 Quant Method : Z:\pestpcbsrv\HPCHEM1\ECD\_D\Method\PD090420CLP.M  
 Quant Title : GC Extractables  
 QLast Update : Sat Sep 05 02:06:36 2020  
 Response via : Initial Calibration  
 Integrator: ChemStation

Volume Inj. : 1 µl  
 Signal #1 Phase : ZB-MR2 Signal #2 Phase: ZB-MR1  
 Signal #1 Info : 30M x 0.32mm x0.2 Signal #2 Info : 30M x 0.32mm x 0.50µm

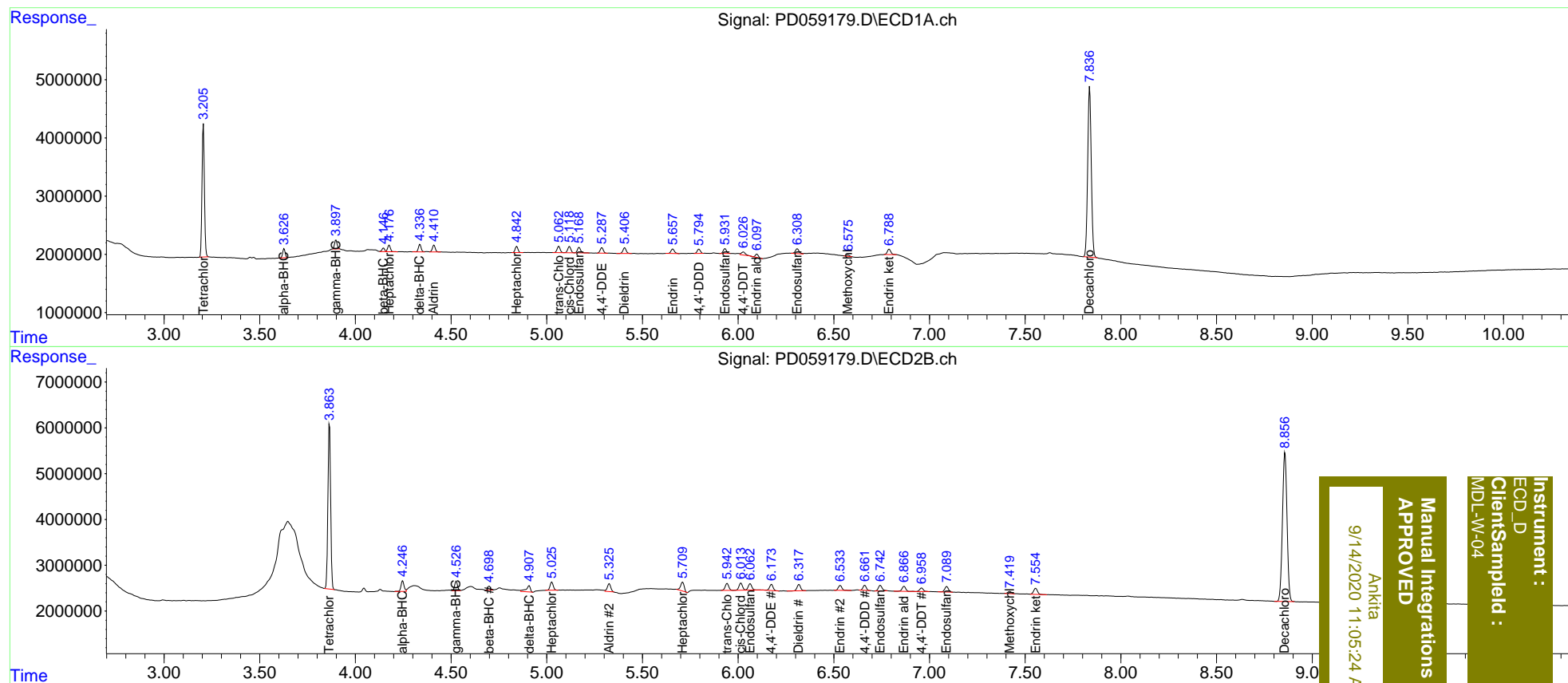
Compound	RT#1	RT#2	Resp#1	Resp#2	ng/ml	ng/ml
-----						
System Monitoring Compounds						
1) SA Tetrachlo...	3.206	3.865	19795125	35441956	19.638	21.627
2) SA Decachlor...	7.837	8.858	38022381	54028165	38.797	40.172
Target Compounds						
2) A alpha-BHC	3.628	4.247	1401059	2615215	0.893	1.077
3) MA gamma-BHC...	3.899	4.527	1450834	2155725	0.916	0.978
4) MA Heptachlor	4.177	5.027	1142995	2071097	1.018	0.983
5) MB Aldrin	4.411	5.327	1218201	2150501	0.936	1.042
6) B beta-BHC	4.147	4.700	606094	852624	0.988	0.895
7) B delta-BHC	4.338	4.908	1305127	2168618	0.897	1.080
8) B Heptachlo...	4.843	5.710	1106672	2418840	0.969	1.205
9) A Endosulfan I	5.169	6.063	1124599	1899117	1.054	1.118
10) B trans-Chl...	5.063	5.943	1193988	1946586	0.999	1.046
11) B cis-Chlor...	5.119	6.015	1230540	2018423	1.031	1.071
12) B 4,4'-DDE	5.288	6.175	1078732	1761751	0.910	0.992
13) MA Dieldrin	5.407	6.318	1141458	1783836	1.014	0.963
14) MA Endrin	5.659	6.534	963508	1473190	1.040	0.914
15) B Endosulfa...	5.932	6.743	1000175	1709361	0.975	1.106
16) A 4,4'-DDD	5.796	6.662	860436	1285157	1.081	0.901
17) MA 4,4'-DDT	6.028	6.959	774826	1041758	0.914	0.710
18) B Endrin al...	6.098	6.868	625623	1490443	0.794	1.110 #
19) B Endosulfa...	6.309	7.090	1134599	1621141	1.173	1.027
20) A Methoxychlor	6.575	7.419	264657	652347	0.743m	0.846m
21) B Endrin ke...	6.790	7.555	1182691	1870530	1.102	1.098

(f)=RT Delta > 1/2 Window (#)=Amounts differ by > 25% (m)=manual int.

Data Path : Z:\pestpcbsrv\HPCHEM1\ECD\_D\Data\PD091120\  
 Data File : PD059179.D  
 Signal(s) : Signal #1: ECD1A.ch Signal #2: ECD2B.ch  
 Acq On : 11 Sep 2020 11:49  
 Operator : DD\AJ  
 Sample : MDL-W-04  
 Misc :  
 ALS Vial : 16 Sample Multiplier: 1

Integration File signal 1: autoint1.e  
 Integration File signal 2: autoint2.e  
 Quant Time: Sep 11 12:02:44 2020  
 Quant Method : Z:\pestpcbsrv\HPCHEM1\ECD\_D\Method\PD090420CLP.M  
 Quant Title : GC Extractables  
 QLast Update : Sat Sep 05 02:06:36 2020  
 Response via : Initial Calibration  
 Integrator: ChemStation

Volume Inj. : 1 µl  
 Signal #1 Phase : ZB-MR2 Signal #2 Phase: ZB-MR1  
 Signal #1 Info : 30M x 0.32mm x0.2 Signal #2 Info : 30M x 0.32mm x 0.50µm



Instrument : ECD\_D  
 Client Sample Id : MDL-W-04  
 Manual Integrations APPROVED  
 Ankitia  
 9/14/2020 11:05:24 AM