

Data Path : Z:\pestpcbsrv\HPCHEM1\ECD_D\Data\PD091219\
 Data File : PD054547.D
 Signal(s) : Signal #1: ECD1A.CH Signal #2: ECD2B.CH
 Acq On : 13 Sep 2019 5:22
 Operator : SG\AJ
 Sample : PIBLK08
 Misc :
 ALS Vial : 2 Sample Multiplier: 1

Instrument :
 ECD_D
 ClientSampleId :
 PIBLK08

Integration File signal 1: autoint1.e
 Integration File signal 2: autoint2.e
 Quant Time: Sep 13 06:30:02 2019
 Quant Method : Z:\pestpcbsrv\HPCHEM1\ECD_D\Method\PD090419CLP.M
 Quant Title : GC Extractables
 QLast Update : Thu Sep 05 08:40:10 2019
 Response via : Initial Calibration
 Integrator: ChemStation 6890 Scale Mode: Large solvent peaks clipped

Volume Inj. : 1 µl
 Signal #1 Phase : ZB-MR2 Signal #2 Phase: ZB-MR1
 Signal #1 Info : 30M x 0.32mm x0.2 Signal #2 Info : 30M x 0.32mm x 0.50µm

Compound	RT#1	RT#2	Resp#1	Resp#2	ng/ml	ng/ml

System Monitoring Compounds						
1) SA Tetrachlo...	3.302	3.972	14753221	20601417	20.874	20.874
27) SA Decachlor...	7.988	9.008	26109609	33257924	38.581	35.551

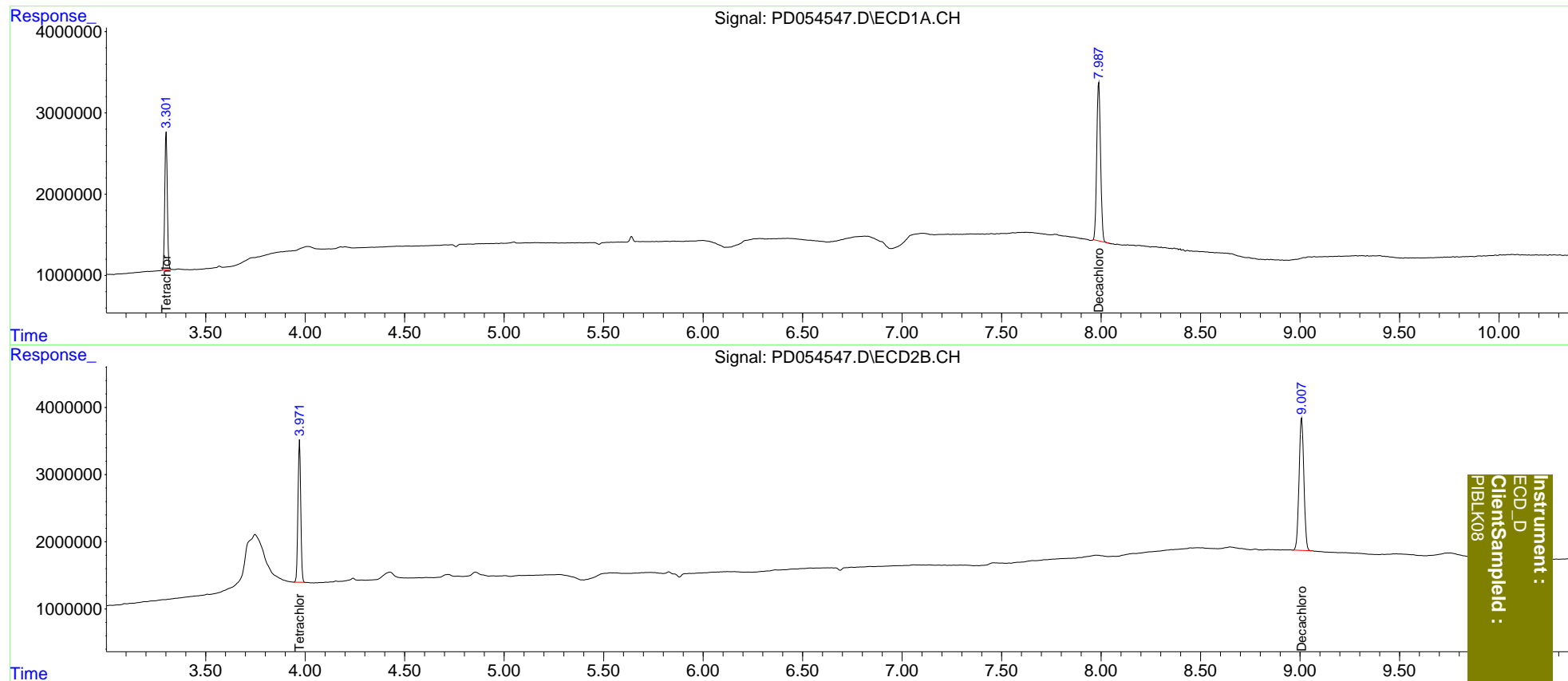
Target Compounds

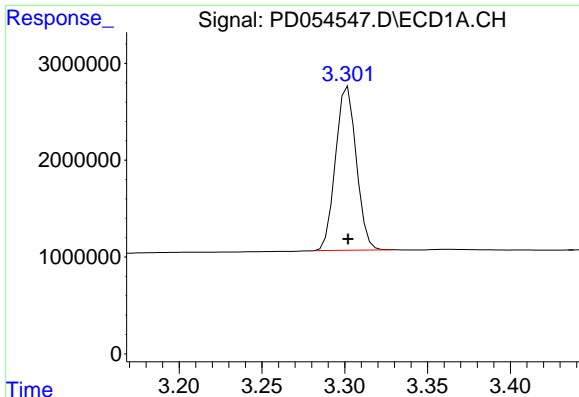
(f)=RT Delta > 1/2 Window (#)=Amounts differ by > 25% (m)=manual int.

Data Path : Z:\pestpcbsrv\HPCHEM1\ECD_D\Data\PD091219\
 Data File : PD054547.D
 Signal(s) : Signal #1: ECD1A.CH Signal #2: ECD2B.CH
 Acq On : 13 Sep 2019 5:22
 Operator : SG\AJ
 Sample : PIBLK08
 Misc :
 ALS Vial : 2 Sample Multiplier: 1

Integration File signal 1: autoint1.e
 Integration File signal 2: autoint2.e
 Quant Time: Sep 13 06:30:02 2019
 Quant Method : Z:\pestpcbsrv\HPCHEM1\ECD_D\Method\PD090419CLP.M
 Quant Title : GC Extractables
 QLast Update : Thu Sep 05 08:40:10 2019
 Response via : Initial Calibration
 Integrator: ChemStation 6890 Scale Mode: Large solvent peaks clipped

Volume Inj. : 1 µl
 Signal #1 Phase : ZB-MR2 Signal #2 Phase: ZB-MR1
 Signal #1 Info : 30M x 0.32mm x0.2 Signal #2 Info : 30M x 0.32mm x 0.50µm

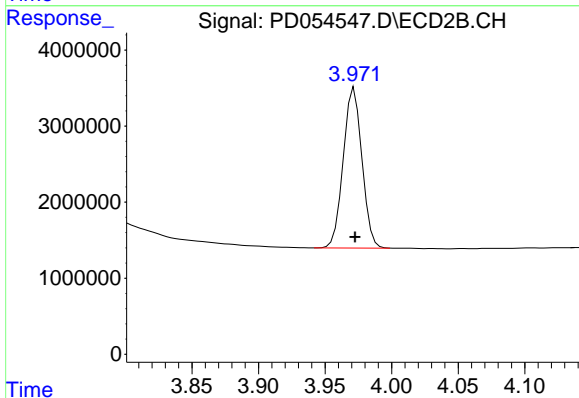




#1 Tetrachloro-m-xylene

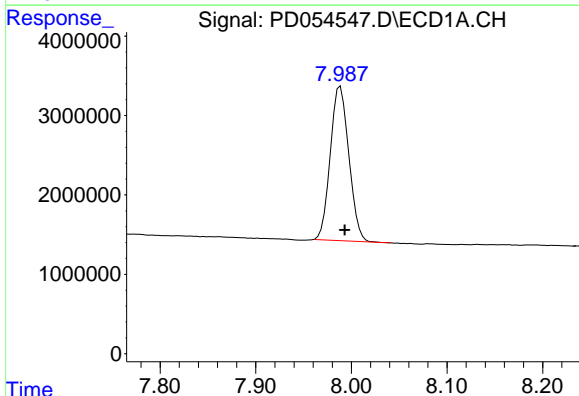
R.T.: 3.302 min
 Delta R.T.: 0.000 min
 Response: 14753221
 Conc: 20.87 ng/ml

Instrument :
 ECD_D
 ClientSampleId :
 PIBLK08



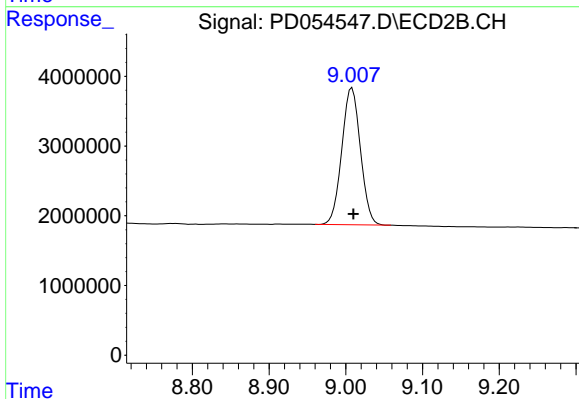
#1 Tetrachloro-m-xylene

R.T.: 3.972 min
 Delta R.T.: 0.000 min
 Response: 20601417
 Conc: 20.87 ng/ml



#27 Decachlorobiphenyl

R.T.: 7.988 min
 Delta R.T.: -0.005 min
 Response: 26109609
 Conc: 38.58 ng/ml



#27 Decachlorobiphenyl

R.T.: 9.008 min
 Delta R.T.: -0.002 min
 Response: 33257924
 Conc: 35.55 ng/ml