

Data Path : Z:\pestpcbsrv\HPCHEM1\ECD_D\Data\PD091123\
 Data File : PD077860.D
 Signal(s) : Signal #1: ECD1A.ch Signal #2: ECD2B.ch
 Acq On : 11 Sep 2023 19:46
 Operator : AR\AJ
 Sample : PEM165
 Misc :
 ALS Vial : 3 Sample Multiplier: 1

Integration File signal 1: autoint1.e
 Integration File signal 2: autoint2.e
 Quant Time: Sep 11 22:16:37 2023
 Quant Method : Z:\pestpcbsrv\HPCHEM1\ECD_D\Method\PD091123CLP-TCLP.M
 Quant Title : GC Extractables
 QLast Update : Mon Sep 11 14:09:05 2023
 Response via : Initial Calibration
 Integrator: ChemStation

Volume Inj. : 1 µl
 Signal #1 Phase : ZB-MR2 Signal #2 Phase: ZB-MR1
 Signal #1 Info : 30M x 0.32mm x0.2 Signal #2 Info : 30M x 0.32mm x 0.50µm

Compound	RT#1	RT#2	Resp#1	Resp#2	ng/ml	ng/ml

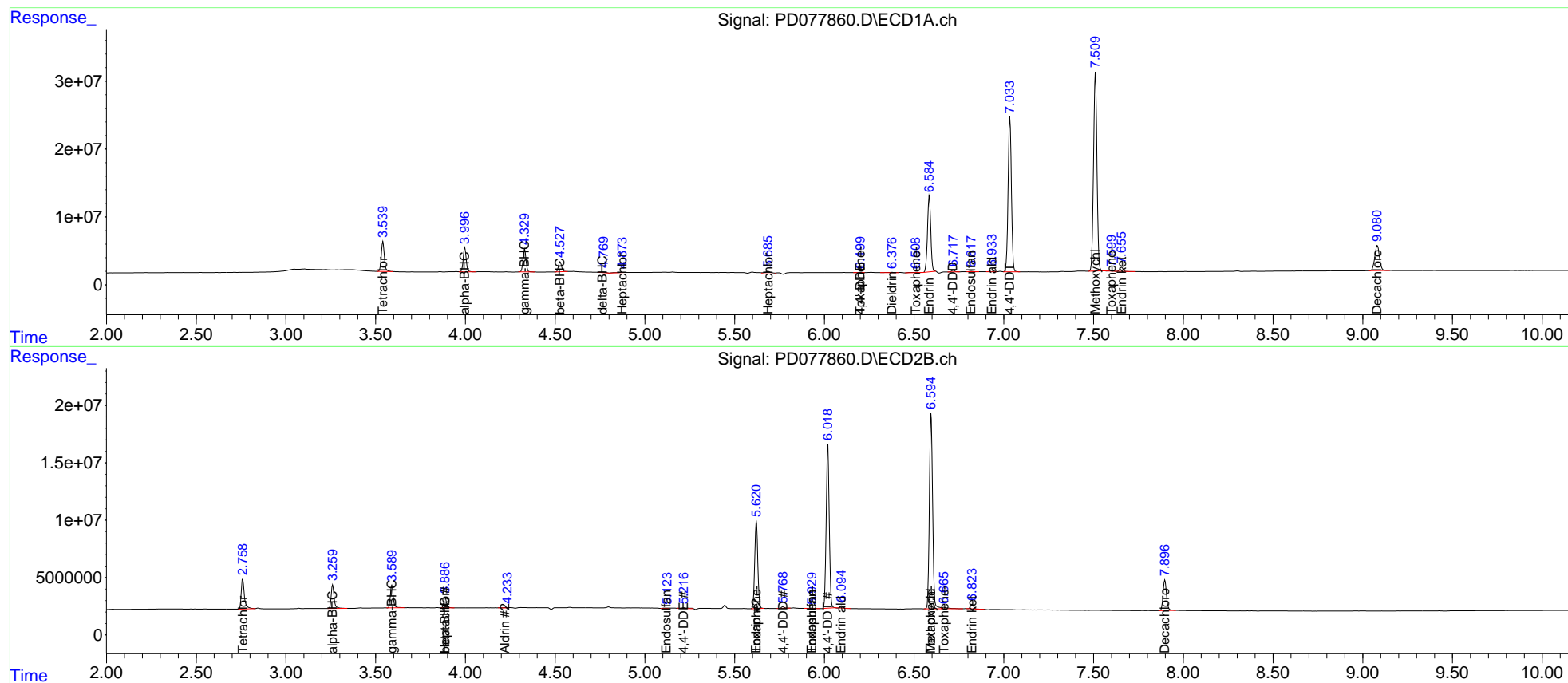
System Monitoring Compounds						
1) SA Tetrachlo...	3.541	2.760	51580703	31928030	20.248	20.179
27) SA Decachlor...	9.081	7.898	67406775	35416744	21.605	20.533
Target Compounds						
2) A alpha-BHC	3.997	3.261	41416961	23495094	9.427	9.316
3) MA gamma-BHC...	4.331	3.591	39506439	22121572	9.641	9.431
4) MA Heptachlor	4.876f	3.888f	1054866	9946974	0.248	4.141 #
5) MB Aldrin	0.000	4.225	0	644185	N.D.	0.269
6) B beta-BHC	4.528	3.888	17988180	9946974	10.085	9.586
7) B delta-BHC	4.765	0.000	1591396	0	0.383	N.D. #
8) B Heptachlo...	5.686	0.000	10486553	0	2.723	N.D. #
9) A Endosulfan I	6.109	5.122f	208990	582980	<MDL	0.298 #
12) B 4,4'-DDE	6.201	5.217	585399	1679419	0.165	0.827 #
13) MA Dieldrin	6.376	0.000	1455487	0	0.383	N.D. #
14) MA Endrin	6.585	5.622	142.8E6	90993672	47.126	47.174
15) B Endosulfa...	6.819	5.930	1391798	416003	0.428	0.216 #
16) A 4,4'-DDD	6.719	5.770	2964668	1679066	1.106	1.137
17) MA 4,4'-DDT	7.034	6.020	292.1E6	169.3E6	107.400	109.818
18) B Endrin al...	6.935	6.096	4094784	1900762	1.608	1.278
20) A Methoxychlor	7.511	6.595	387.4E6	214.2E6	257.911	270.015
21) B Endrin ke...	7.656	6.824	7897291	4721864	2.341	2.317
22) Toxaphene-1	6.201f	0.000	585399	0	21.804	N.D. #
23) Toxaphene-2	6.509f	5.622f	1287081	90993672	38.588	7006.674 #
25) Toxaphene-4	0.000	6.595	0	214.2E6	N.D.	4986.693
26) Toxaphene-5	7.601	6.666f	1476618	3271432	28.257	54.955 #

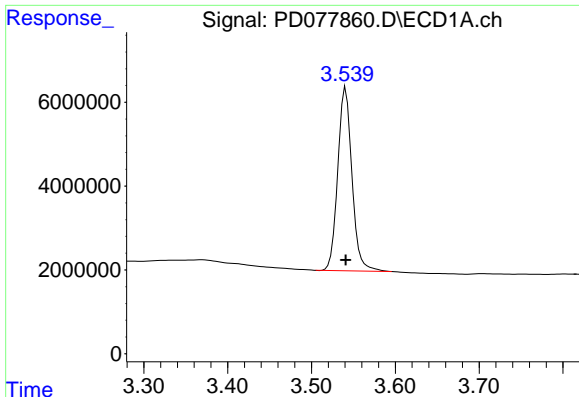
(f)=RT Delta > 1/2 Window (#)=Amounts differ by > 25% (m)=manual int.

Data Path : Z:\pestpcbsrv\HPCHEM1\ECD_D\Data\PD091123\
 Data File : PD077860.D
 Signal(s) : Signal #1: ECD1A.ch Signal #2: ECD2B.ch
 Acq On : 11 Sep 2023 19:46
 Operator : AR\AJ
 Sample : PEM165
 Misc :
 ALS Vial : 3 Sample Multiplier: 1

Integration File signal 1: autoint1.e
 Integration File signal 2: autoint2.e
 Quant Time: Sep 11 22:16:37 2023
 Quant Method : Z:\pestpcbsrv\HPCHEM1\ECD_D\Method\PD091123CLP-TCLP.M
 Quant Title : GC Extractables
 QLast Update : Mon Sep 11 14:09:05 2023
 Response via : Initial Calibration
 Integrator: ChemStation

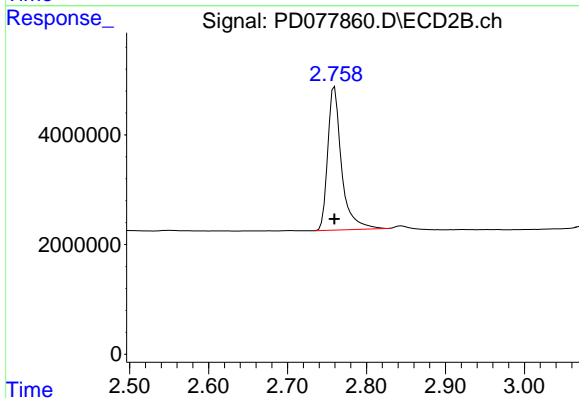
Volume Inj. : 1 µl
 Signal #1 Phase : ZB-MR2 Signal #2 Phase: ZB-MR1
 Signal #1 Info : 30M x 0.32mm x0.2 Signal #2 Info : 30M x 0.32mm x 0.50µm





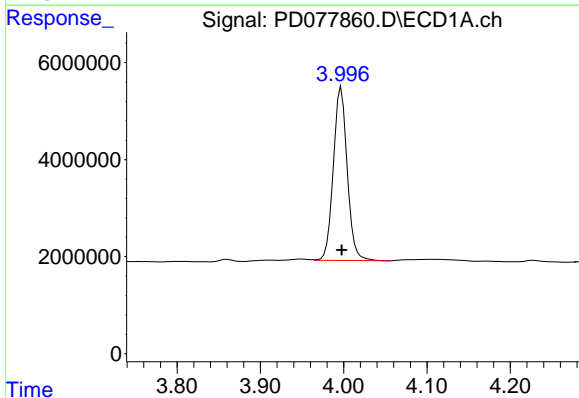
#1 Tetrachloro-m-xylene

R.T.: 3.541 min
Delta R.T.: 0.000 min
Response: 51580703
Conc: 20.25 ng/ml



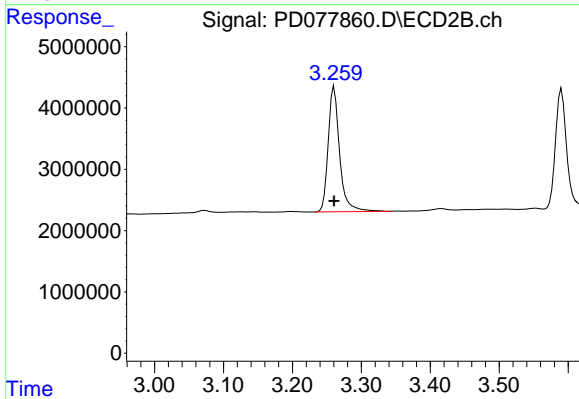
#1 Tetrachloro-m-xylene

R.T.: 2.760 min
Delta R.T.: 0.000 min
Response: 31928030
Conc: 20.18 ng/ml



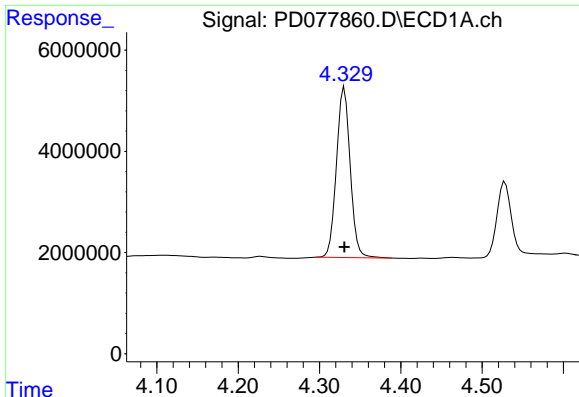
#2 alpha-BHC

R.T.: 3.997 min
Delta R.T.: 0.000 min
Response: 41416961
Conc: 9.43 ng/ml

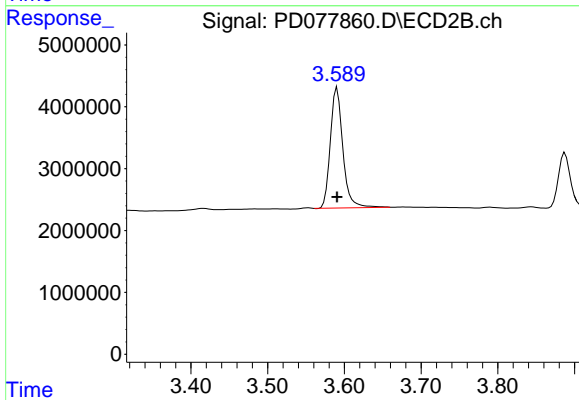


#2 alpha-BHC

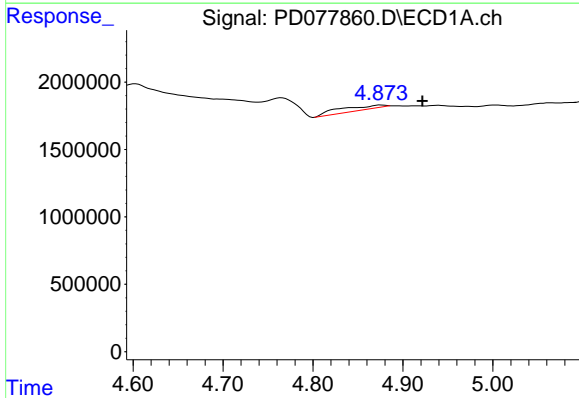
R.T.: 3.261 min
Delta R.T.: 0.000 min
Response: 23495094
Conc: 9.32 ng/ml



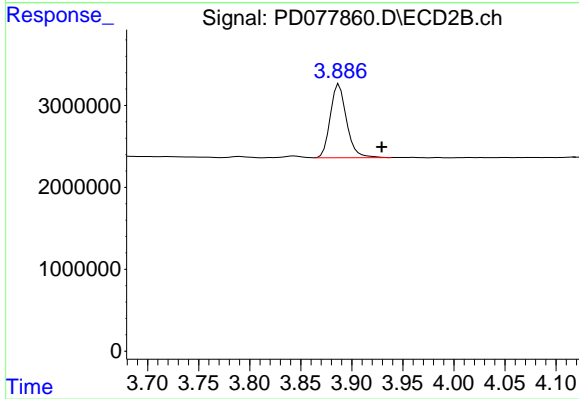
#3 gamma-BHC (Lindane)
 R.T.: 4.331 min
 Delta R.T.: 0.000 min
 Response: 39506439
 Conc: 9.64 ng/ml



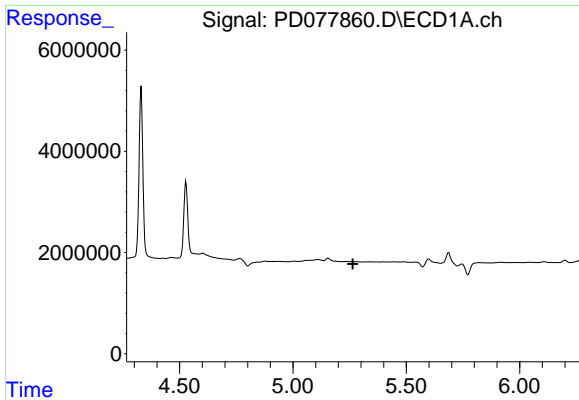
#3 gamma-BHC (Lindane)
 R.T.: 3.591 min
 Delta R.T.: 0.000 min
 Response: 22121572
 Conc: 9.43 ng/ml



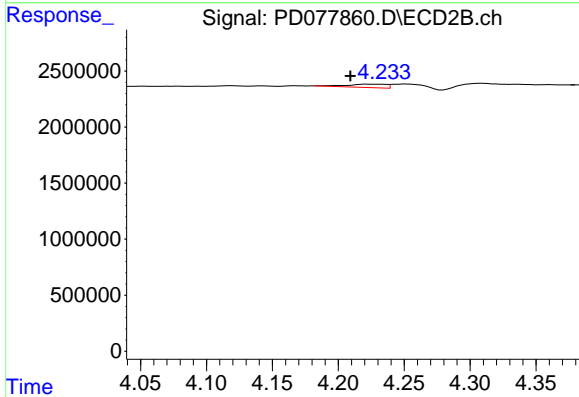
#4 Heptachlor
 R.T.: 4.876 min
 Delta R.T.: -0.045 min
 Response: 1054866
 Conc: 0.25 ng/ml



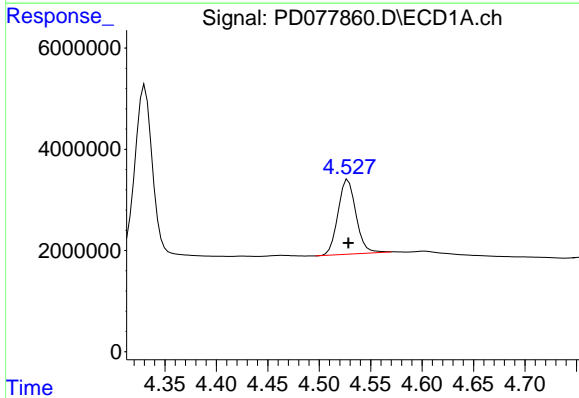
#4 Heptachlor
 R.T.: 3.888 min
 Delta R.T.: -0.042 min
 Response: 9946974
 Conc: 4.14 ng/ml



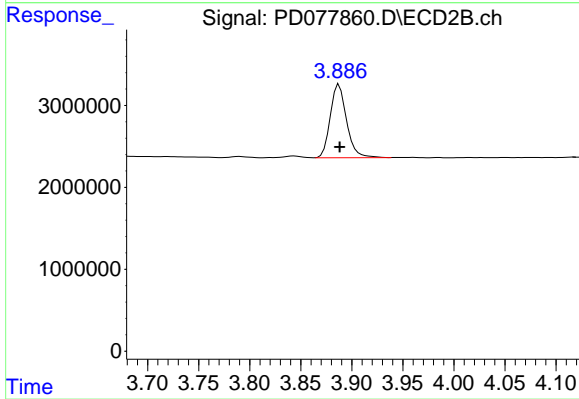
#5 Aldrin
 R.T.: 0.000 min
 Exp R.T. : 5.264 min
 Response: 0
 Conc: N.D.



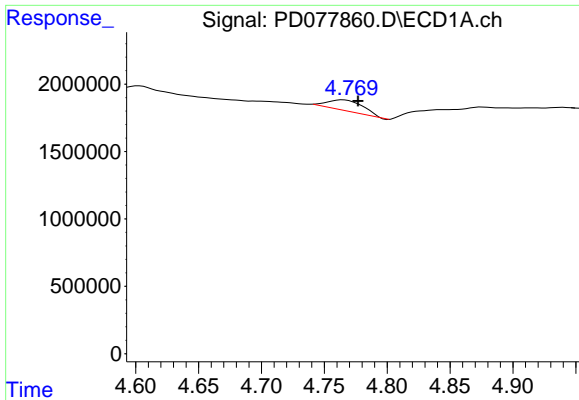
#5 Aldrin
 R.T.: 4.225 min
 Delta R.T.: 0.016 min
 Response: 644185
 Conc: 0.27 ng/ml



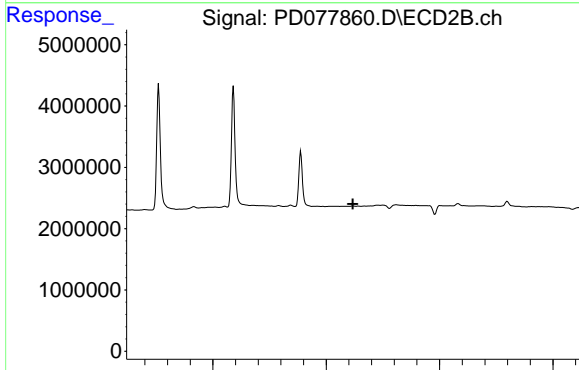
#6 beta-BHC
 R.T.: 4.528 min
 Delta R.T.: 0.000 min
 Response: 17988180
 Conc: 10.09 ng/ml



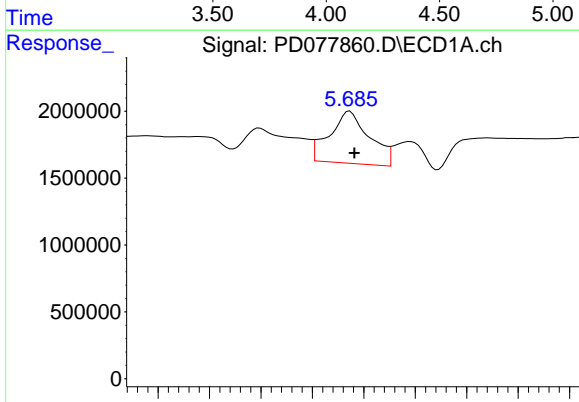
#6 beta-BHC
 R.T.: 3.888 min
 Delta R.T.: 0.000 min
 Response: 9946974
 Conc: 9.59 ng/ml



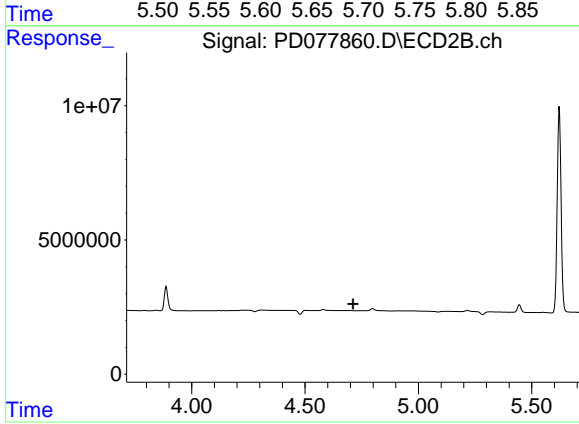
#7 delta-BHC
 R.T.: 4.765 min
 Delta R.T.: -0.012 min
 Response: 1591396
 Conc: 0.38 ng/ml



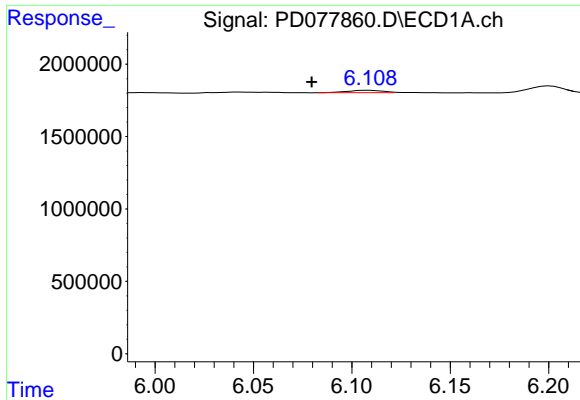
#7 delta-BHC
 R.T.: 0.000 min
 Exp R.T.: 4.117 min
 Response: 0
 Conc: N.D.



#8 Heptachlor epoxide
 R.T.: 5.686 min
 Delta R.T.: -0.004 min
 Response: 10486553
 Conc: 2.72 ng/ml

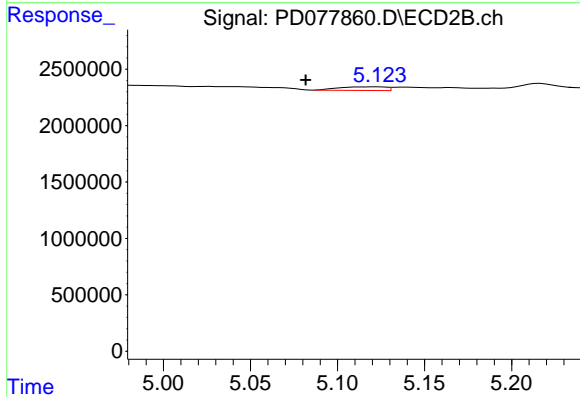


#8 Heptachlor epoxide
 R.T.: 0.000 min
 Exp R.T.: 4.712 min
 Response: 0
 Conc: N.D.



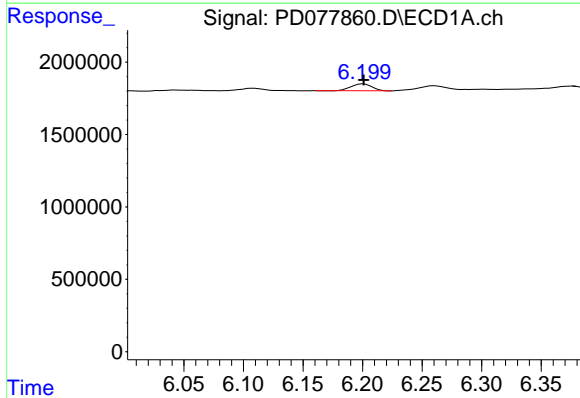
#9 Endosulfan I

R.T.: 6.109 min
 Delta R.T.: 0.029 min
 Response: 208990
 Conc: N.D.



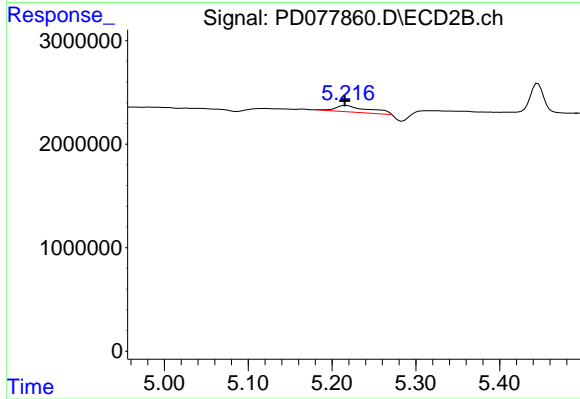
#9 Endosulfan I

R.T.: 5.122 min
 Delta R.T.: 0.040 min
 Response: 582980
 Conc: 0.30 ng/ml



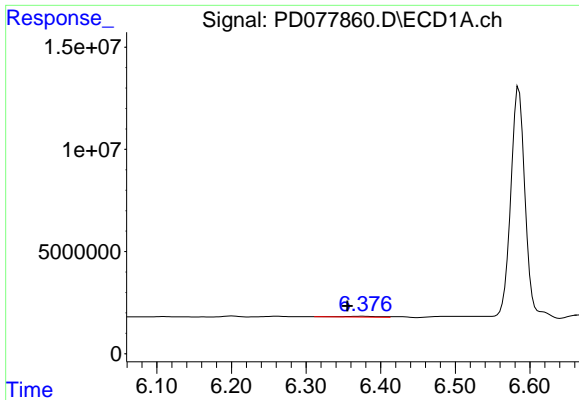
#12 4,4'-DDE

R.T.: 6.201 min
 Delta R.T.: 0.000 min
 Response: 585399
 Conc: 0.17 ng/ml

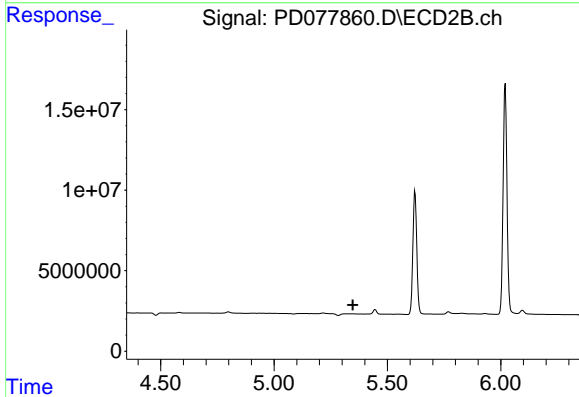


#12 4,4'-DDE

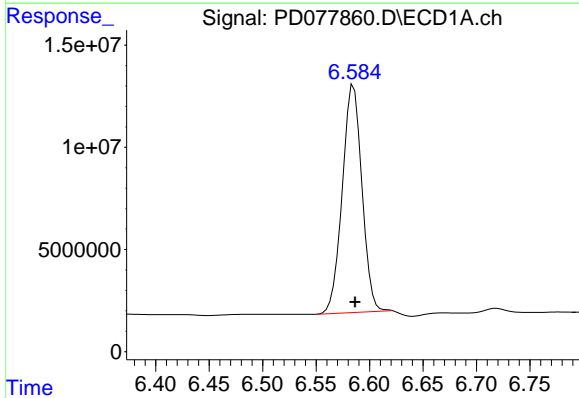
R.T.: 5.217 min
 Delta R.T.: 0.001 min
 Response: 1679419
 Conc: 0.83 ng/ml



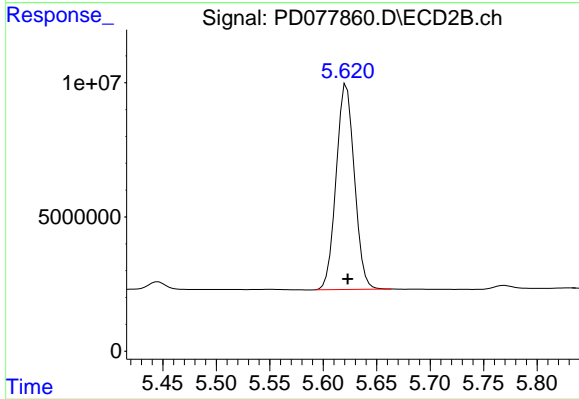
#13 Dieldrin
R.T.: 6.376 min
Delta R.T.: 0.020 min
Response: 1455487
Conc: 0.38 ng/ml



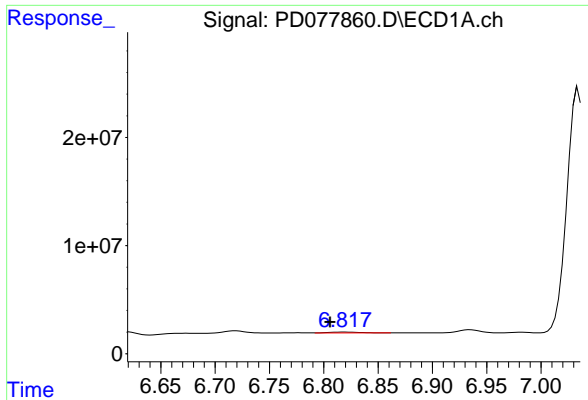
#13 Dieldrin
R.T.: 0.000 min
Exp R.T. : 5.347 min
Response: 0
Conc: N.D.



#14 Endrin
R.T.: 6.585 min
Delta R.T.: -0.001 min
Response: 142808192
Conc: 47.13 ng/ml

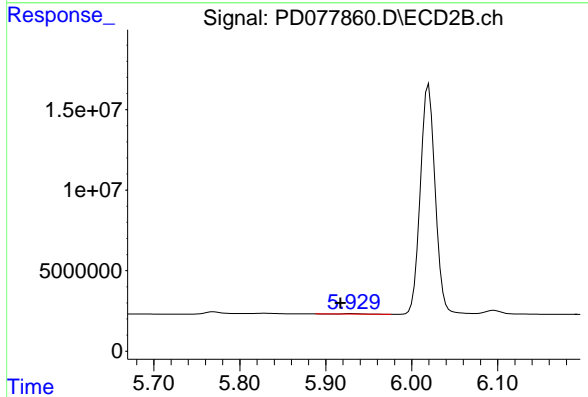


#14 Endrin
R.T.: 5.622 min
Delta R.T.: 0.000 min
Response: 90993672
Conc: 47.17 ng/ml



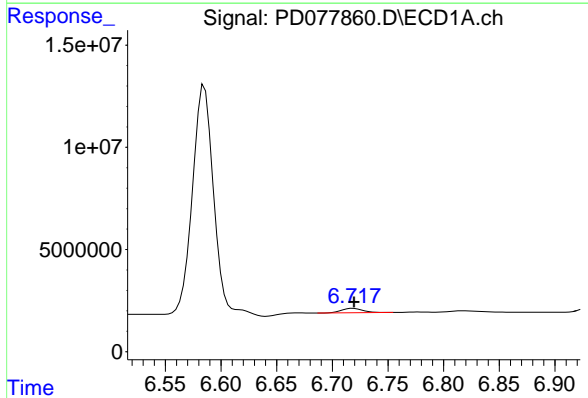
#15 Endosulfan II

R.T.: 6.819 min
Delta R.T.: 0.013 min
Response: 1391798
Conc: 0.43 ng/ml



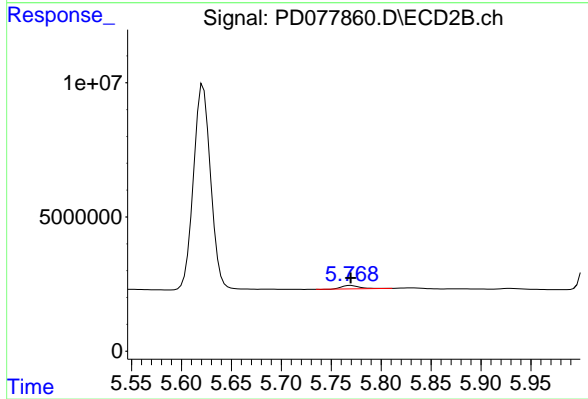
#15 Endosulfan II

R.T.: 5.930 min
Delta R.T.: 0.013 min
Response: 416003
Conc: 0.22 ng/ml



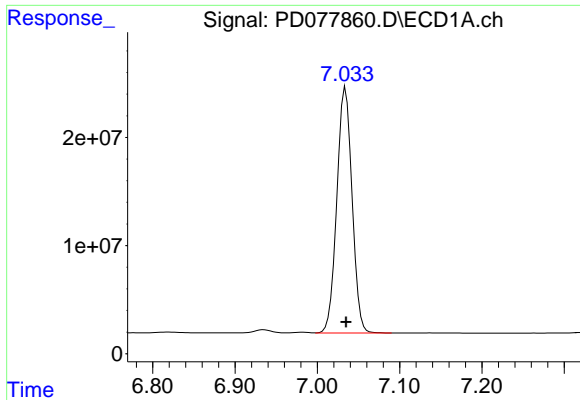
#16 4,4'-DDD

R.T.: 6.719 min
Delta R.T.: 0.000 min
Response: 2964668
Conc: 1.11 ng/ml



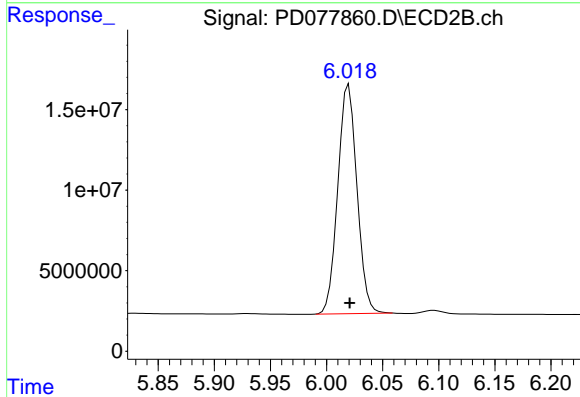
#16 4,4'-DDD

R.T.: 5.770 min
Delta R.T.: 0.000 min
Response: 1679066
Conc: 1.14 ng/ml



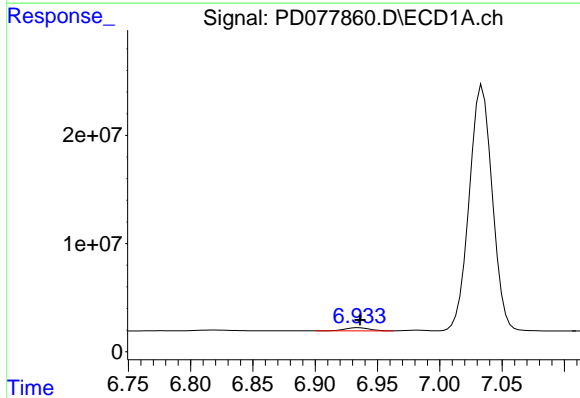
#17 4,4'-DDT

R.T.: 7.034 min
 Delta R.T.: 0.000 min
 Response: 292070852
 Conc: 107.40 ng/ml



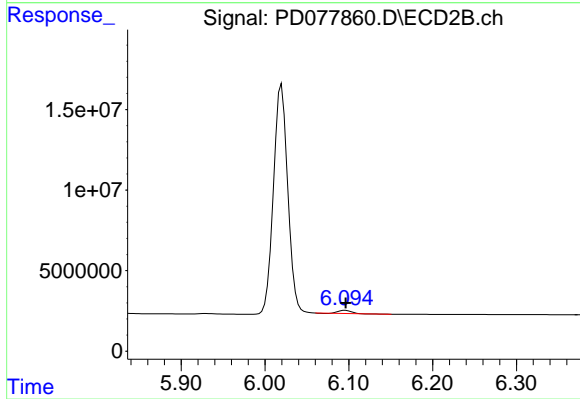
#17 4,4'-DDT

R.T.: 6.020 min
 Delta R.T.: 0.000 min
 Response: 169283181
 Conc: 109.82 ng/ml



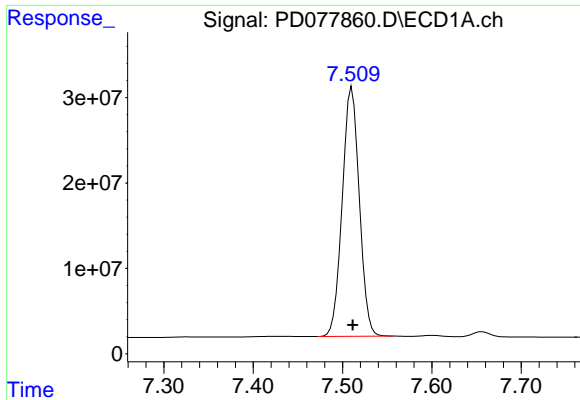
#18 Endrin aldehyde

R.T.: 6.935 min
 Delta R.T.: -0.001 min
 Response: 4094784
 Conc: 1.61 ng/ml

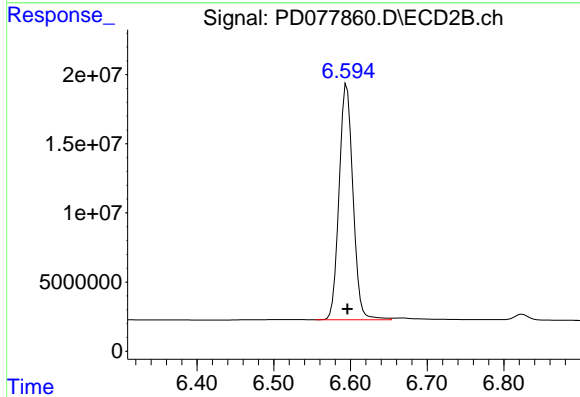


#18 Endrin aldehyde

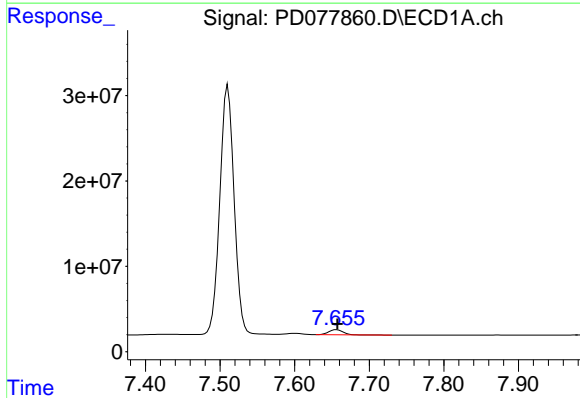
R.T.: 6.096 min
 Delta R.T.: 0.000 min
 Response: 1900762
 Conc: 1.28 ng/ml



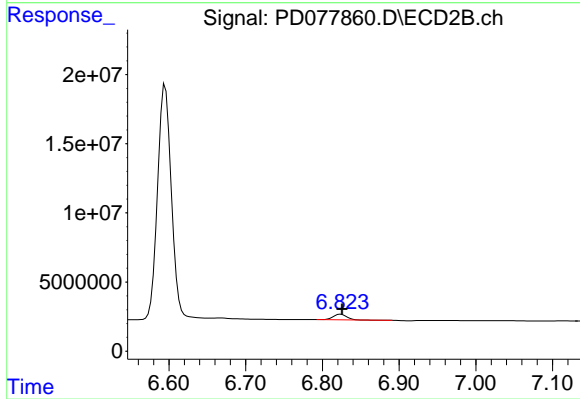
#20 Methoxychlor
 R.T.: 7.511 min
 Delta R.T.: 0.000 min
 Response: 387386372
 Conc: 257.91 ng/ml



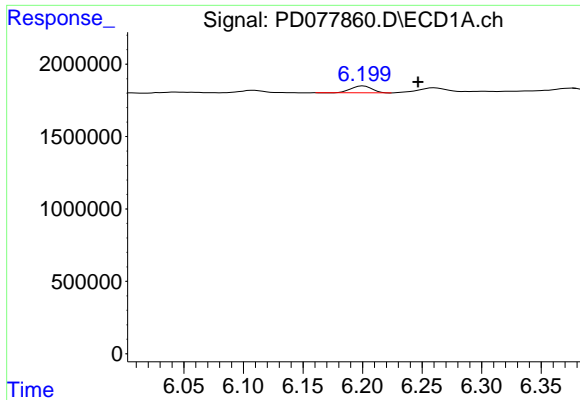
#20 Methoxychlor
 R.T.: 6.595 min
 Delta R.T.: 0.000 min
 Response: 214198513
 Conc: 270.01 ng/ml



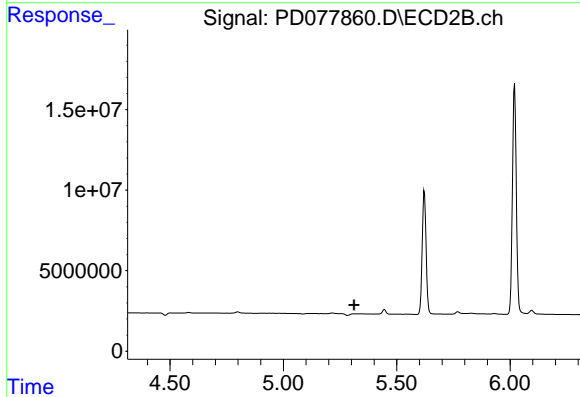
#21 Endrin ketone
 R.T.: 7.656 min
 Delta R.T.: -0.001 min
 Response: 7897291
 Conc: 2.34 ng/ml



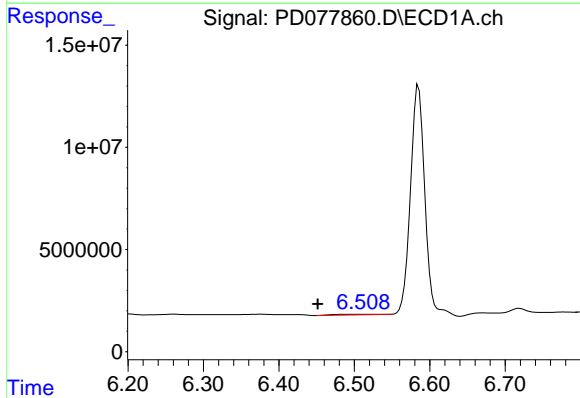
#21 Endrin ketone
 R.T.: 6.824 min
 Delta R.T.: -0.002 min
 Response: 4721864
 Conc: 2.32 ng/ml



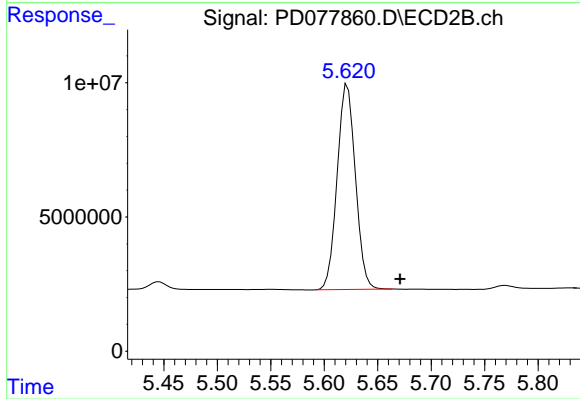
#22 Toxaphene-1
 R.T.: 6.201 min
 Delta R.T.: -0.046 min
 Response: 585399
 Conc: 21.80 ng/ml



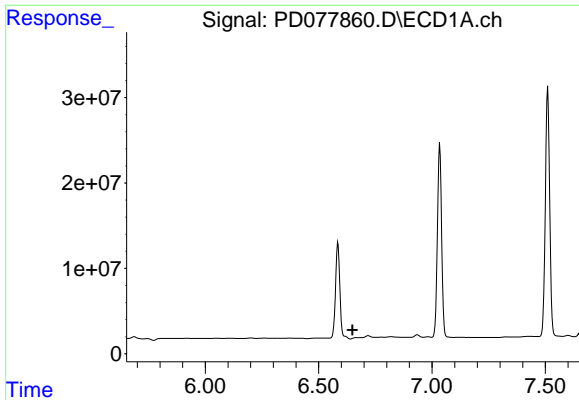
#22 Toxaphene-1
 R.T.: 0.000 min
 Exp R.T. : 5.312 min
 Response: 0
 Conc: N.D.



#23 Toxaphene-2
 R.T.: 6.509 min
 Delta R.T.: 0.057 min
 Response: 1287081
 Conc: 38.59 ng/ml

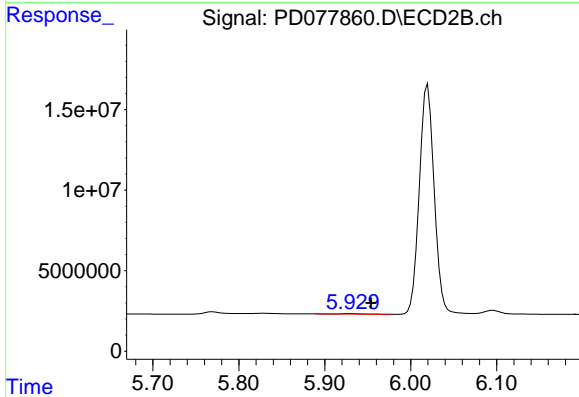


#23 Toxaphene-2
 R.T.: 5.622 min
 Delta R.T.: -0.049 min
 Response: 90993672
 Conc: 7006.67 ng/ml



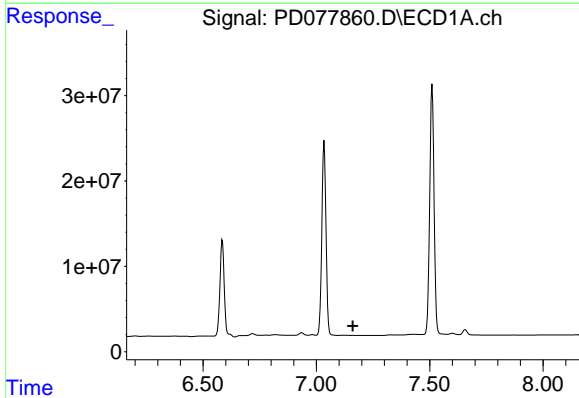
#24 Toxaphene-3

R.T.: 6.672 min
 Delta R.T.: 0.023 min
 Response: -4000440
 Conc: N.D.



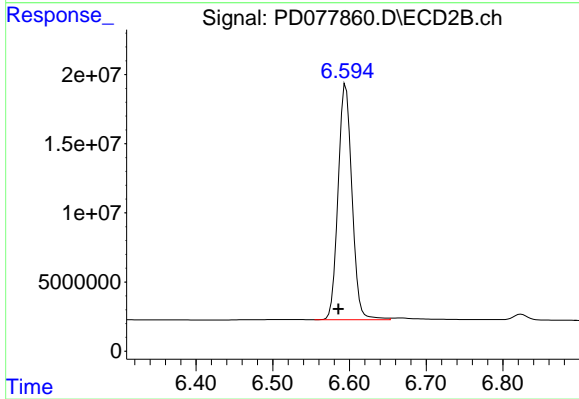
#24 Toxaphene-3

R.T.: 5.930 min
 Delta R.T.: -0.024 min
 Response: 416003
 Conc: 27.65 ng/ml



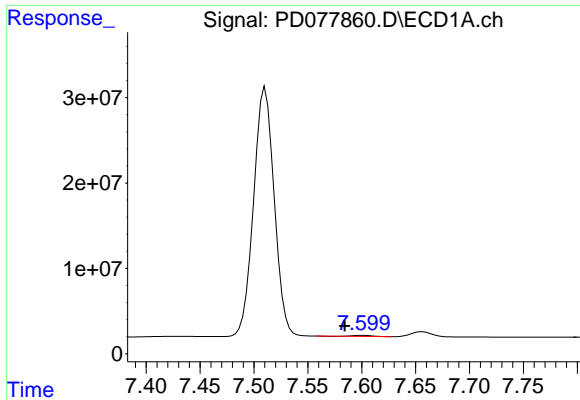
#25 Toxaphene-4

R.T.: 0.000 min
 Exp R.T. : 7.161 min
 Response: 0
 Conc: N.D.

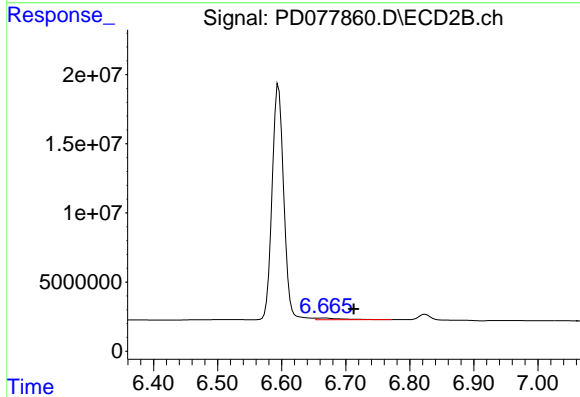


#25 Toxaphene-4

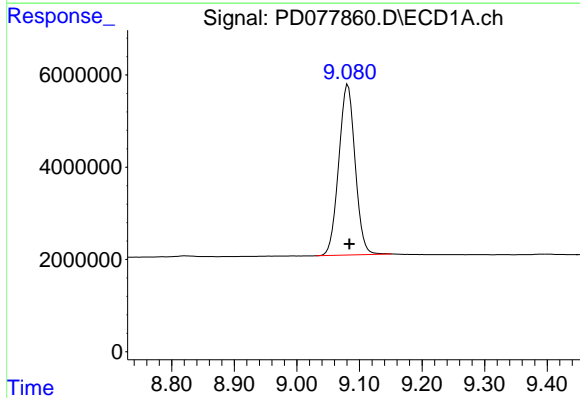
R.T.: 6.595 min
 Delta R.T.: 0.010 min
 Response: 214198513
 Conc: 4986.69 ng/ml



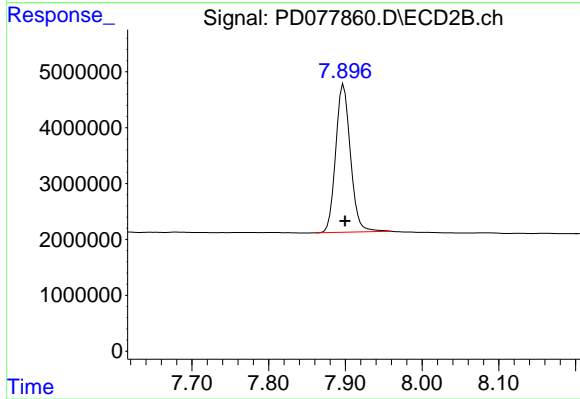
#26 Toxaphene-5
 R.T.: 7.601 min
 Delta R.T.: 0.017 min
 Response: 1476618
 Conc: 28.26 ng/ml



#26 Toxaphene-5
 R.T.: 6.666 min
 Delta R.T.: -0.046 min
 Response: 3271432
 Conc: 54.95 ng/ml



#27 Decachlorobiphenyl
 R.T.: 9.081 min
 Delta R.T.: -0.002 min
 Response: 67406775
 Conc: 21.61 ng/ml



#27 Decachlorobiphenyl
 R.T.: 7.898 min
 Delta R.T.: -0.002 min
 Response: 35416744
 Conc: 20.53 ng/ml