

Data Path : Z:\pestpcbsrv\HPCHEM1\ECD_D\Data\PD091123\
 Data File : PD077862.D
 Signal(s) : Signal #1: ECD1A.ch Signal #2: ECD2B.ch
 Acq On : 11 Sep 2023 20:12
 Operator : AR\AJ
 Sample : 04306-08DL 2X
 Misc :
 ALS Vial : 19 Sample Multiplier: 1

Integration File signal 1: autoint1.e
 Integration File signal 2: autoint2.e
 Quant Time: Sep 11 22:17:11 2023
 Quant Method : Z:\pestpcbsrv\HPCHEM1\ECD_D\Method\PD091123CLP-TCLP.M
 Quant Title : GC Extractables
 QLast Update : Mon Sep 11 14:09:05 2023
 Response via : Initial Calibration
 Integrator: ChemStation

Volume Inj. : 1 µl
 Signal #1 Phase : ZB-MR2 Signal #2 Phase: ZB-MR1
 Signal #1 Info : 30M x 0.32mm x0.2 Signal #2 Info : 30M x 0.32mm x 0.50µm

Compound	RT#1	RT#2	Resp#1	Resp#2	ng/ml	ng/ml

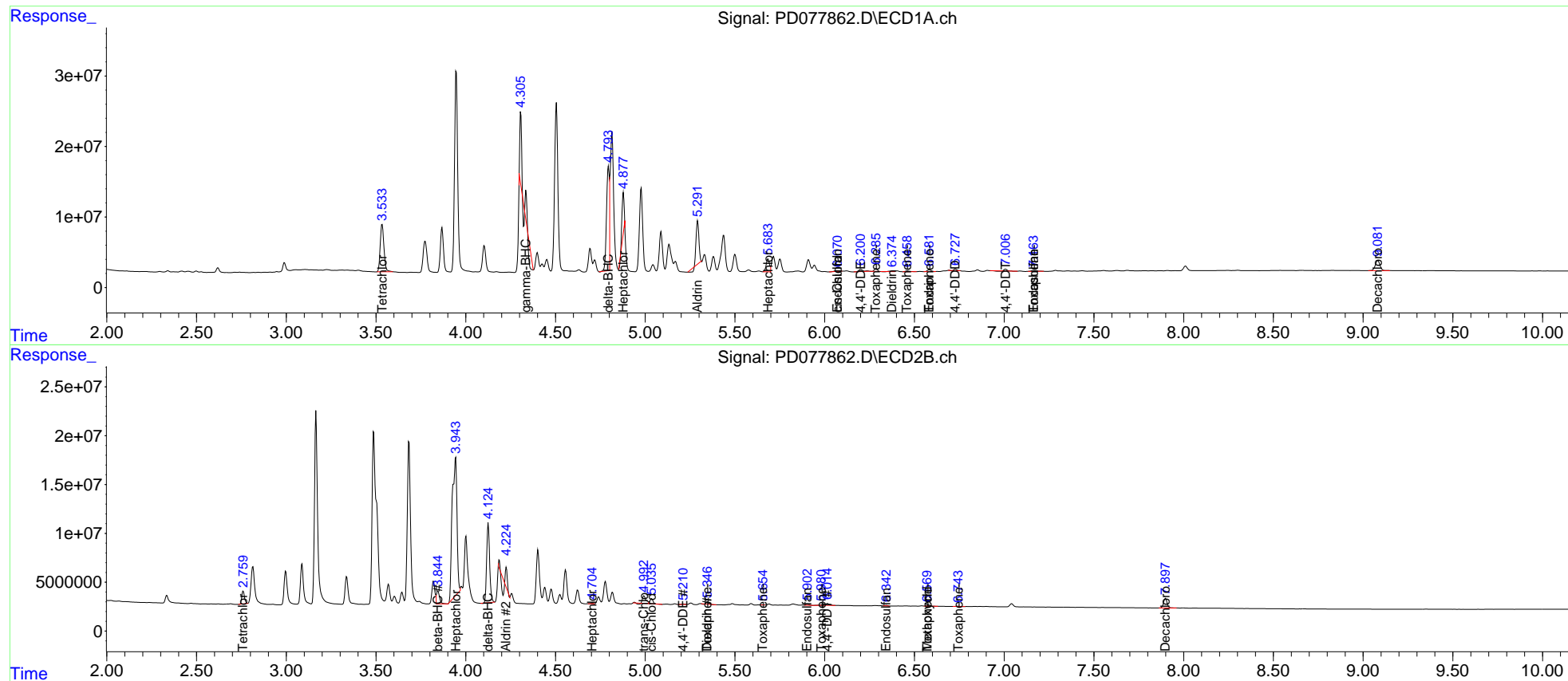
System Monitoring Compounds						
1) SA Tetrachlo...	3.534	2.760	96859760	13568050	38.021	8.575 #
2) SA Decachlor...	9.082	7.899	25781271	13519986	8.264	7.838
Target Compounds						
3) MA gamma-BHC...	4.336	3.603	10726484	-1643027	2.618	N.D. #
4) MA Heptachlor	4.878f	3.943	46080569	260.1E6	10.832	108.286 #
5) MB Aldrin	5.292f	4.226	54799990	4646698	13.072	1.937 #
6) B beta-BHC	0.000	3.845f	0	16110943	N.D.	15.526
7) B delta-BHC	4.795	4.126	156.8E6	93780652	37.704	39.357
8) B Heptachlo...	5.684	4.705	23172776	546424	6.017	0.245 #
9) A Endosulfan I	6.070	5.118f	1740210	134044	0.514	<MDL #
11) B cis-Chlor...	6.070f	5.036	1740210	6251810	0.458	2.842 #
12) B 4,4'-DDE	6.201	5.212	5218076	495064	1.473	0.244 #
13) MA Dieldrin	6.373	5.347	941614	2418732	0.248	1.067 #
14) MA Endrin	6.583	5.630	3789940	-677036	1.251	N.D. #
16) A 4,4'-DDD	6.728	5.755	2281911	130312	0.851	<MDL #
17) MA 4,4'-DDT	7.008	6.015	2000013	2455915	0.735	1.593 #
18) B Endrin al...	0.000	6.135f	0	99066	N.D.	<MDL
19) B Endosulfa...	7.163	6.343	1682938	441249	0.565	0.253 #
20) A Methoxychlor	0.000	6.571	0	752161	N.D.	0.948
21) B Endrin ke...	7.629	6.839	-3057	45774	N.D.	<MDL
22) Toxaphene-1	6.286f	5.347f	4373251	2418732	162.886	204.851 #
23) Toxaphene-2	6.460	5.656	2027514	11708	60.787	0.902 #
24) Toxaphene-3	6.583f	5.981	3789940	308051	165.837	20.472 #
25) Toxaphene-4	7.163	6.571	1682938	752161	22.994	17.511
26) Toxaphene-5	7.629f	6.744	-3057	374493	N.D.	6.291

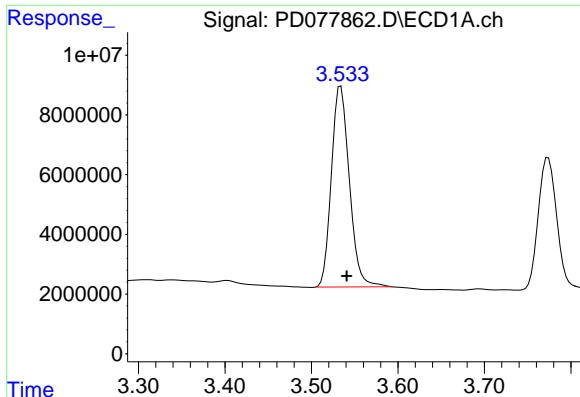
(f)=RT Delta > 1/2 Window (#)=Amounts differ by > 25% (m)=manual int.

Data Path : Z:\pestpcbsrv\HPCHEM1\ECD_D\Data\PD091123\
 Data File : PD077862.D
 Signal(s) : Signal #1: ECD1A.ch Signal #2: ECD2B.ch
 Acq On : 11 Sep 2023 20:12
 Operator : AR\AJ
 Sample : 04306-08DL 2X
 Misc :
 ALS Vial : 19 Sample Multiplier: 1

Integration File signal 1: autoint1.e
 Integration File signal 2: autoint2.e
 Quant Time: Sep 11 22:17:11 2023
 Quant Method : Z:\pestpcbsrv\HPCHEM1\ECD_D\Method\PD091123CLP-TCLP.M
 Quant Title : GC Extractables
 QLast Update : Mon Sep 11 14:09:05 2023
 Response via : Initial Calibration
 Integrator: ChemStation

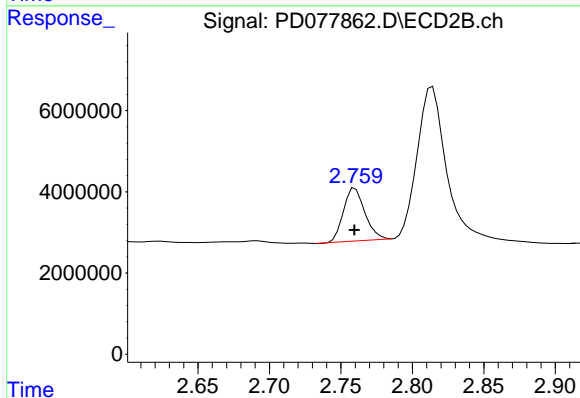
Volume Inj. : 1 µl
 Signal #1 Phase : ZB-MR2 Signal #2 Phase: ZB-MR1
 Signal #1 Info : 30M x 0.32mm x0.2 Signal #2 Info : 30M x 0.32mm x 0.50µm





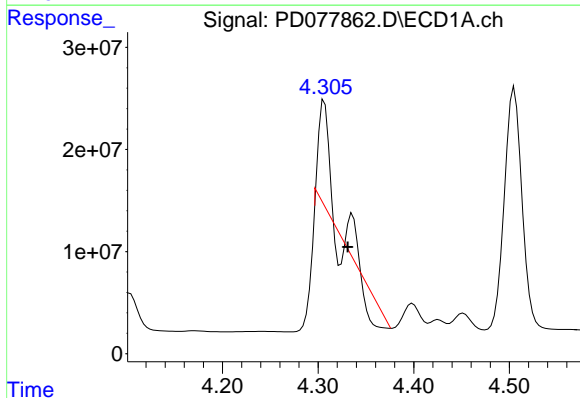
#1 Tetrachloro-m-xylene

R.T.: 3.534 min
 Delta R.T.: -0.007 min
 Response: 96859760
 Conc: 38.02 ng/ml



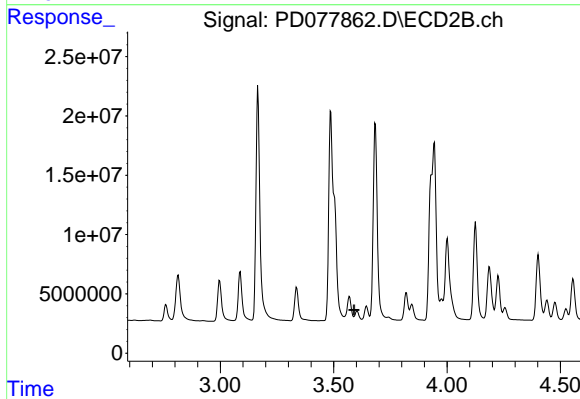
#1 Tetrachloro-m-xylene

R.T.: 2.760 min
 Delta R.T.: 0.000 min
 Response: 13568050
 Conc: 8.58 ng/ml



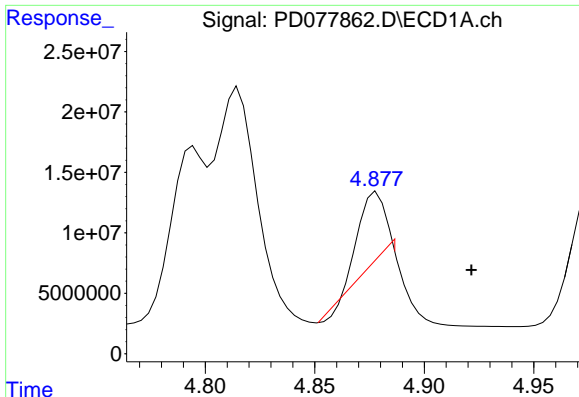
#3 gamma-BHC (Lindane)

R.T.: 4.336 min
 Delta R.T.: 0.005 min
 Response: 10726484
 Conc: 2.62 ng/ml



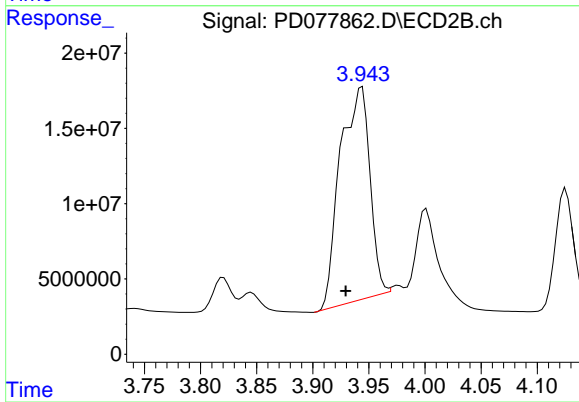
#3 gamma-BHC (Lindane)

R.T.: 3.603 min
 Delta R.T.: 0.013 min
 Response: -1643027
 Conc: N.D.



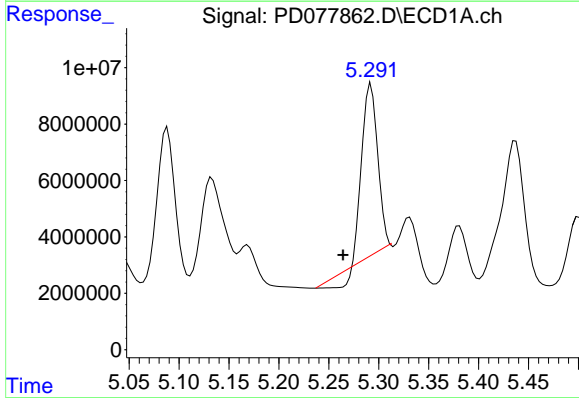
#4 Heptachlor

R.T.: 4.878 min
 Delta R.T.: -0.043 min
 Response: 46080569
 Conc: 10.83 ng/ml



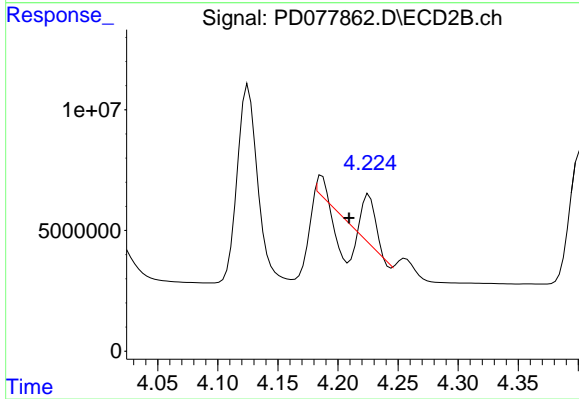
#4 Heptachlor

R.T.: 3.943 min
 Delta R.T.: 0.014 min
 Response: 260135286
 Conc: 108.29 ng/ml



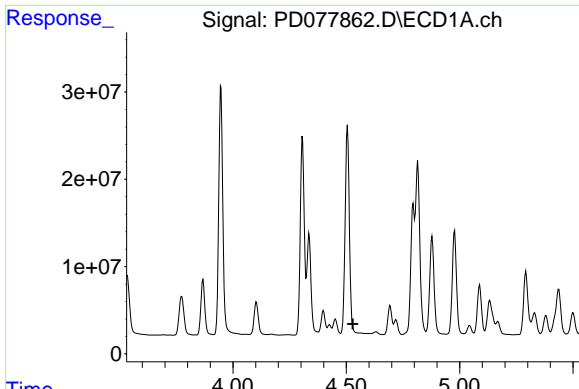
#5 Aldrin

R.T.: 5.292 min
 Delta R.T.: 0.028 min
 Response: 54799990
 Conc: 13.07 ng/ml



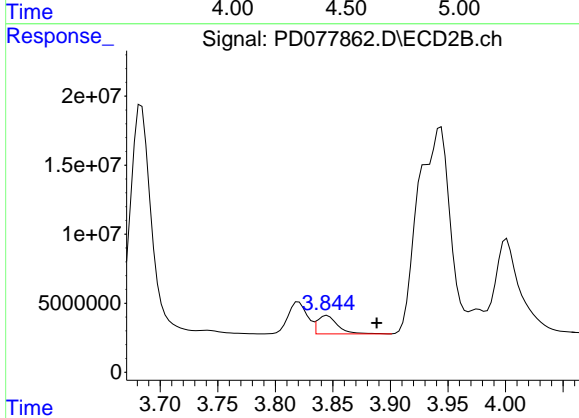
#5 Aldrin

R.T.: 4.226 min
 Delta R.T.: 0.017 min
 Response: 4646698
 Conc: 1.94 ng/ml



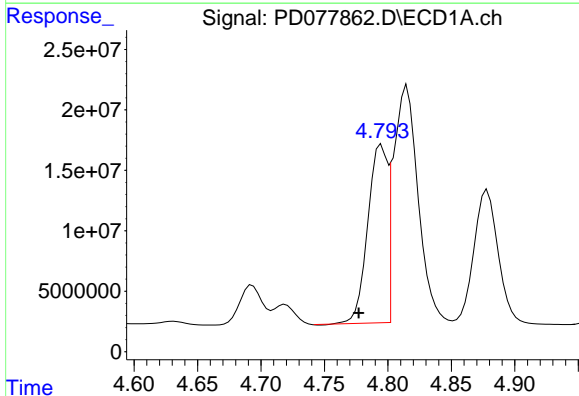
#6 beta-BHC

R.T.: 0.000 min
 Exp R.T. : 4.529 min
 Response: 0
 Conc: N.D.



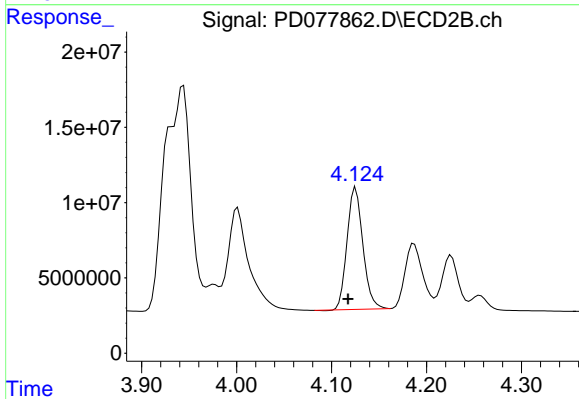
#6 beta-BHC

R.T.: 3.845 min
 Delta R.T.: -0.043 min
 Response: 16110943
 Conc: 15.53 ng/ml



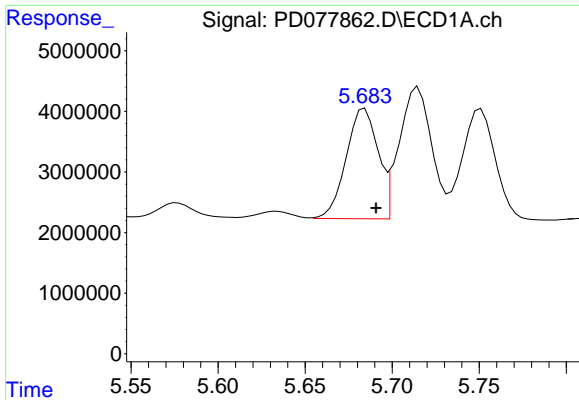
#7 delta-BHC

R.T.: 4.795 min
 Delta R.T.: 0.018 min
 Response: 156798639
 Conc: 37.70 ng/ml

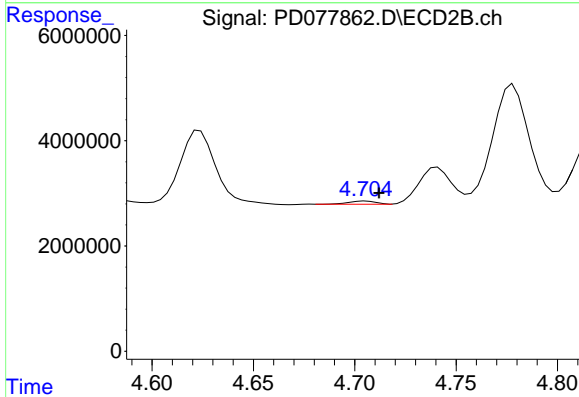


#7 delta-BHC

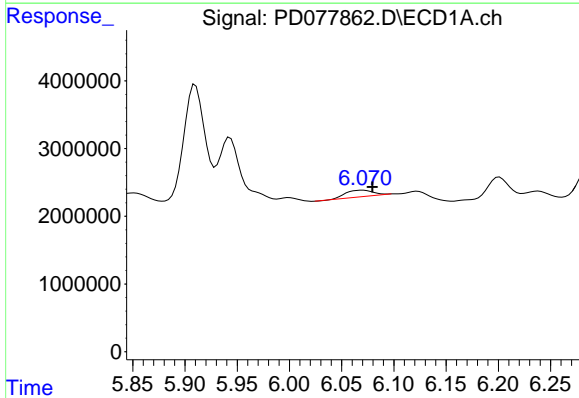
R.T.: 4.126 min
 Delta R.T.: 0.008 min
 Response: 93780652
 Conc: 39.36 ng/ml



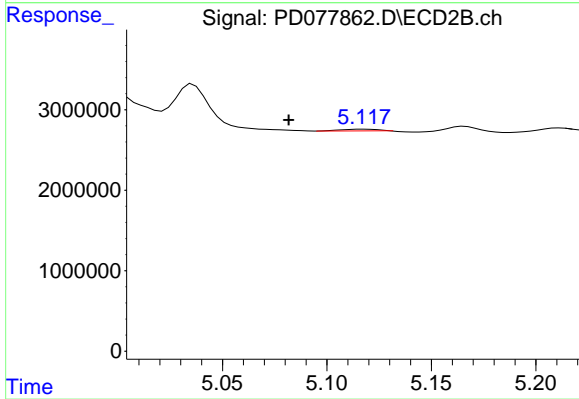
#8 Heptachlor epoxide
 R.T.: 5.684 min
 Delta R.T.: -0.006 min
 Response: 23172776
 Conc: 6.02 ng/ml



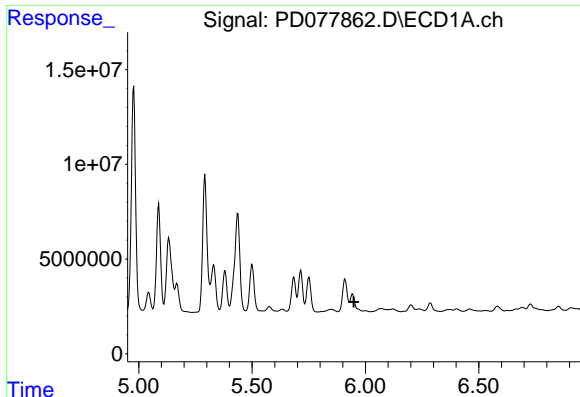
#8 Heptachlor epoxide
 R.T.: 4.705 min
 Delta R.T.: -0.007 min
 Response: 546424
 Conc: 0.25 ng/ml



#9 Endosulfan I
 R.T.: 6.070 min
 Delta R.T.: -0.010 min
 Response: 1740210
 Conc: 0.51 ng/ml

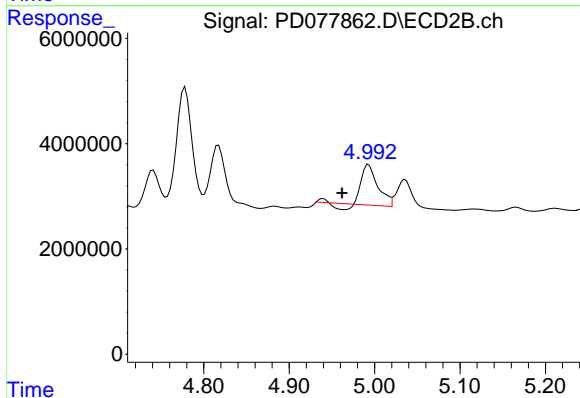


#9 Endosulfan I
 R.T.: 5.118 min
 Delta R.T.: 0.036 min
 Response: 134044
 Conc: N.D.



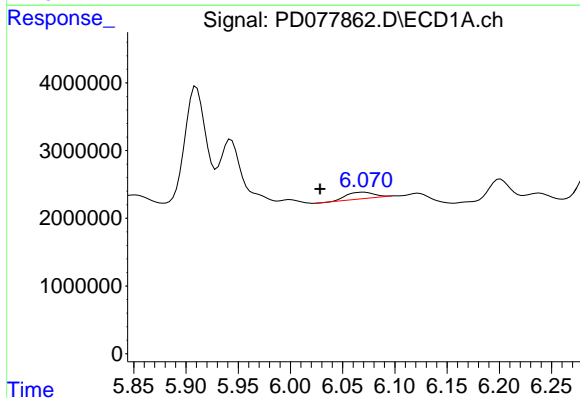
#10 trans-Chlordane

R.T.: 5.943 min
 Delta R.T.: -0.006 min
 Response: -29493617
 Conc: N.D.



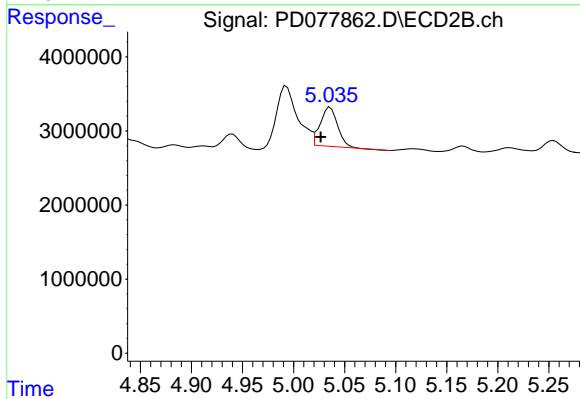
#10 trans-Chlordane

R.T.: 4.993 min
 Delta R.T.: 0.031 min
 Response: 9218119
 Conc: 4.28 ng/ml



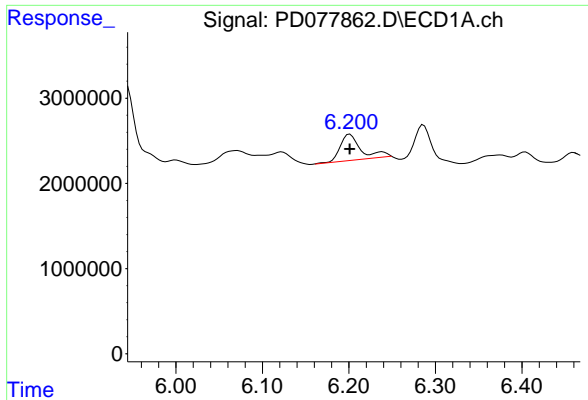
#11 cis-Chlordane

R.T.: 6.070 min
 Delta R.T.: 0.041 min
 Response: 1740210
 Conc: 0.46 ng/ml

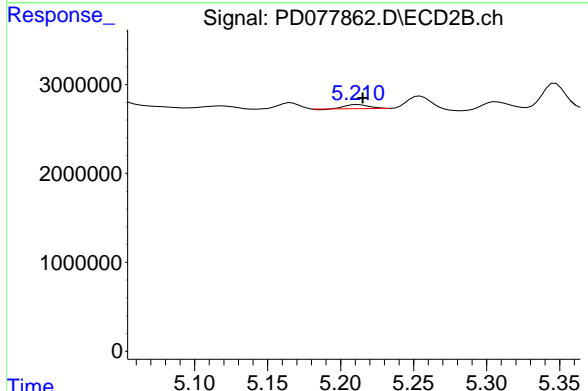


#11 cis-Chlordane

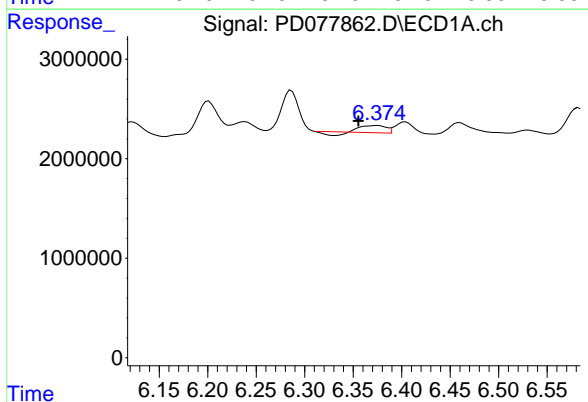
R.T.: 5.036 min
 Delta R.T.: 0.010 min
 Response: 6251810
 Conc: 2.84 ng/ml



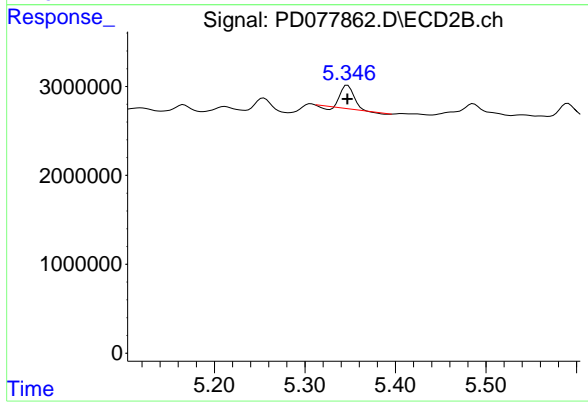
#12 4,4'-DDE
 R.T.: 6.201 min
 Delta R.T.: 0.000 min
 Response: 5218076
 Conc: 1.47 ng/ml



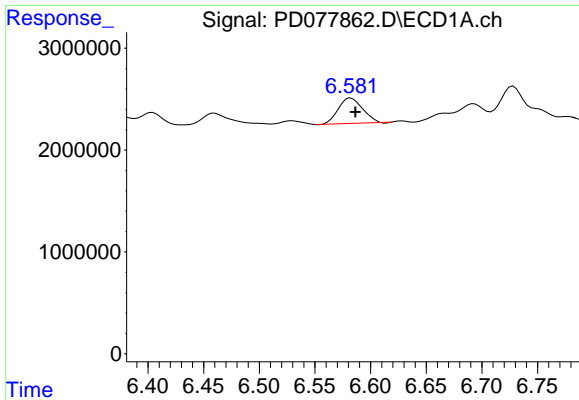
#12 4,4'-DDE
 R.T.: 5.212 min
 Delta R.T.: -0.003 min
 Response: 495064
 Conc: 0.24 ng/ml



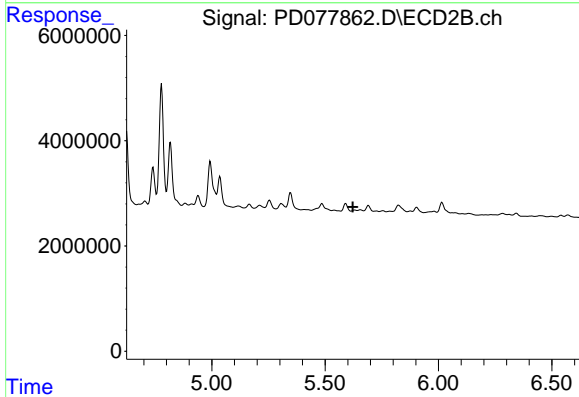
#13 Dieldrin
 R.T.: 6.373 min
 Delta R.T.: 0.018 min
 Response: 941614
 Conc: 0.25 ng/ml



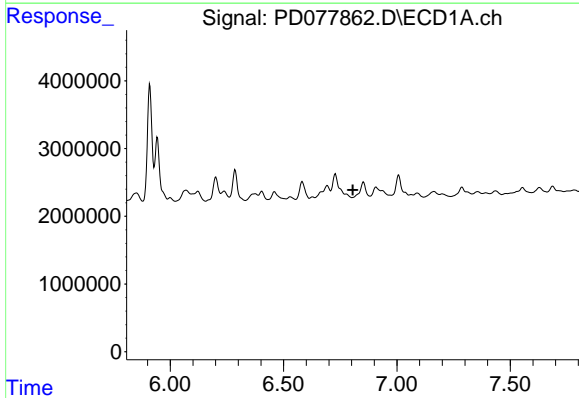
#13 Dieldrin
 R.T.: 5.347 min
 Delta R.T.: 0.000 min
 Response: 2418732
 Conc: 1.07 ng/ml



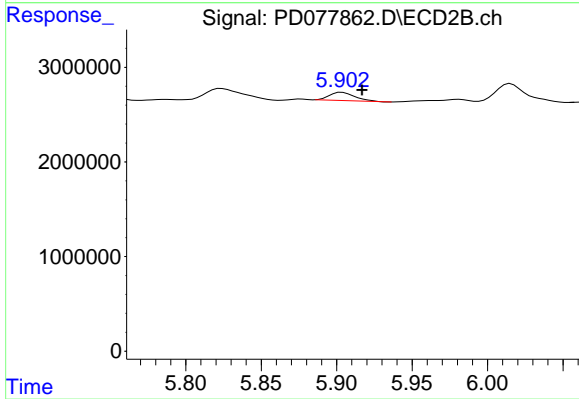
#14 Endrin
 R.T.: 6.583 min
 Delta R.T.: -0.004 min
 Response: 3789940
 Conc: 1.25 ng/ml



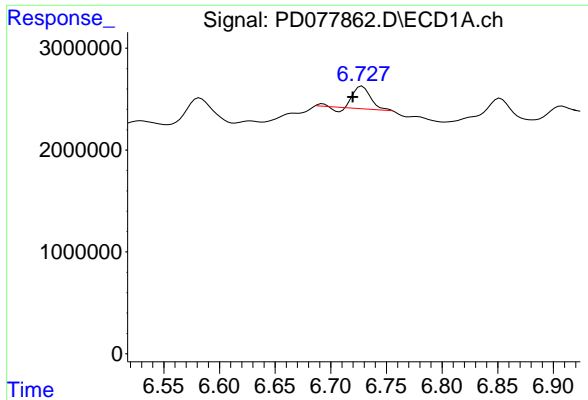
#14 Endrin
 R.T.: 5.630 min
 Delta R.T.: 0.008 min
 Response: -677036
 Conc: N.D.



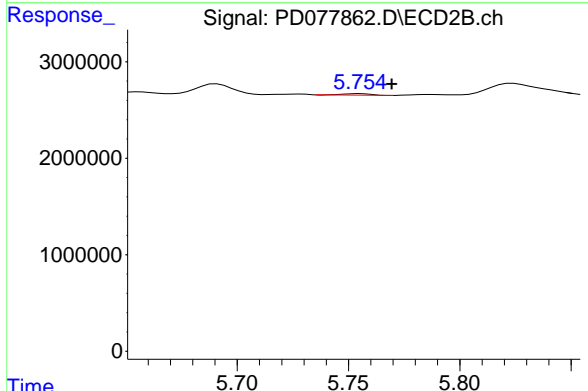
#15 Endosulfan II
 R.T.: 6.852 min
 Delta R.T.: 0.047 min
 Response: -1996171
 Conc: N.D.



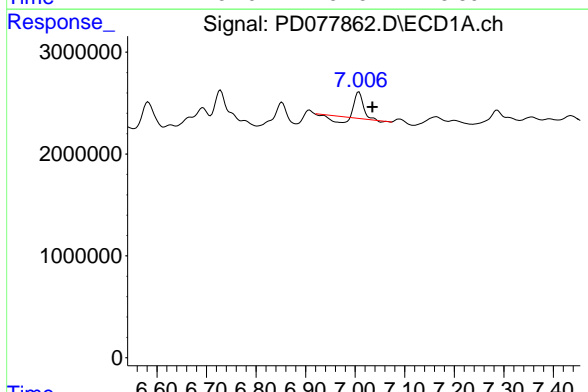
#15 Endosulfan II
 R.T.: 5.904 min
 Delta R.T.: -0.013 min
 Response: 1022790
 Conc: 0.53 ng/ml



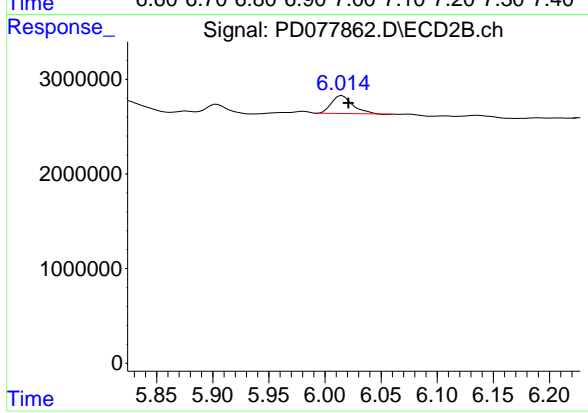
#16 4,4'-DDD
 R.T.: 6.728 min
 Delta R.T.: 0.009 min
 Response: 2281911
 Conc: 0.85 ng/ml



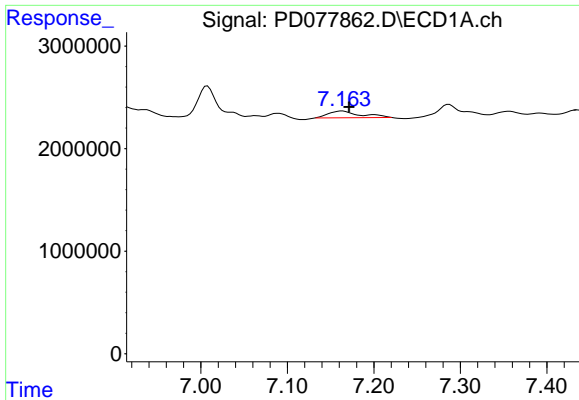
#16 4,4'-DDD
 R.T.: 5.755 min
 Delta R.T.: -0.014 min
 Response: 130312
 Conc: N.D.



#17 4,4'-DDT
 R.T.: 7.008 min
 Delta R.T.: -0.027 min
 Response: 2000013
 Conc: 0.74 ng/ml

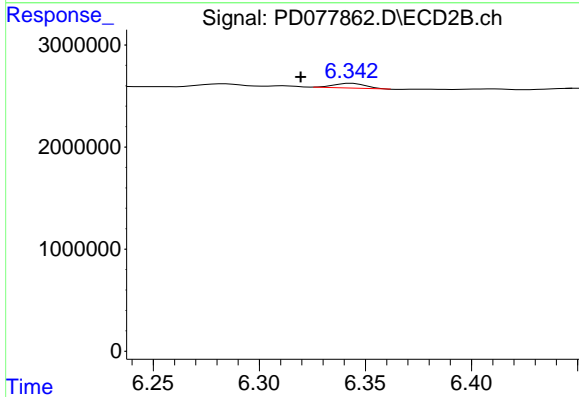


#17 4,4'-DDT
 R.T.: 6.015 min
 Delta R.T.: -0.005 min
 Response: 2455915
 Conc: 1.59 ng/ml



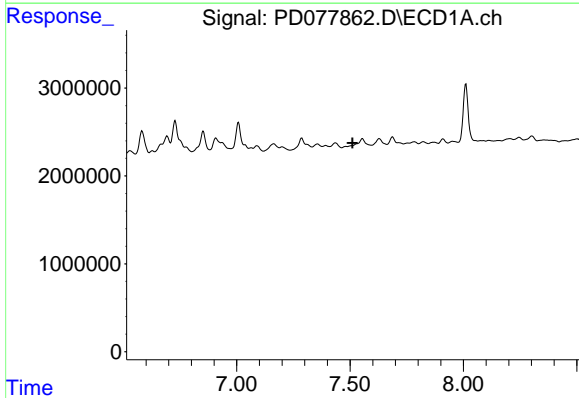
#19 Endosulfan Sulfate

R.T.: 7.163 min
 Delta R.T.: -0.008 min
 Response: 1682938
 Conc: 0.56 ng/ml



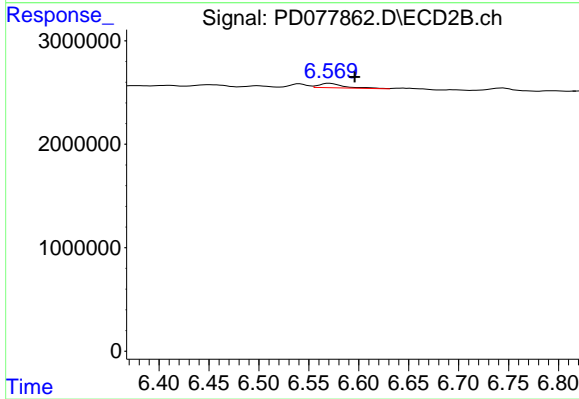
#19 Endosulfan Sulfate

R.T.: 6.343 min
 Delta R.T.: 0.024 min
 Response: 441249
 Conc: 0.25 ng/ml



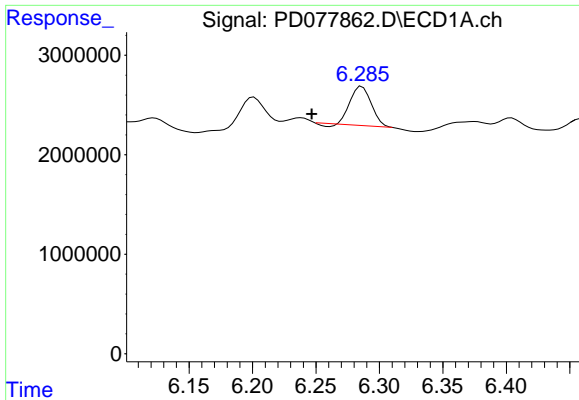
#20 Methoxychlor

R.T.: 0.000 min
 Exp R.T. : 7.511 min
 Response: 0
 Conc: N.D.

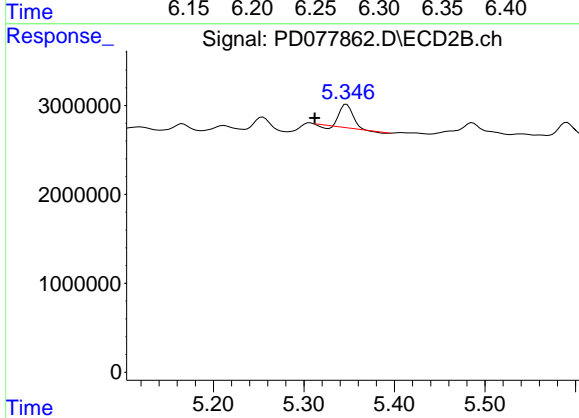


#20 Methoxychlor

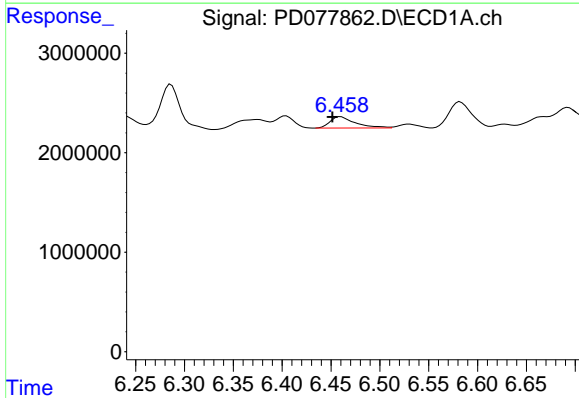
R.T.: 6.571 min
 Delta R.T.: -0.025 min
 Response: 752161
 Conc: 0.95 ng/ml



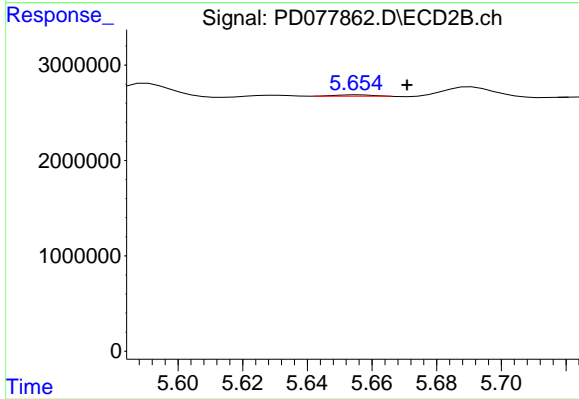
#22 Toxaphene-1
 R.T.: 6.286 min
 Delta R.T.: 0.040 min
 Response: 4373251
 Conc: 162.89 ng/ml



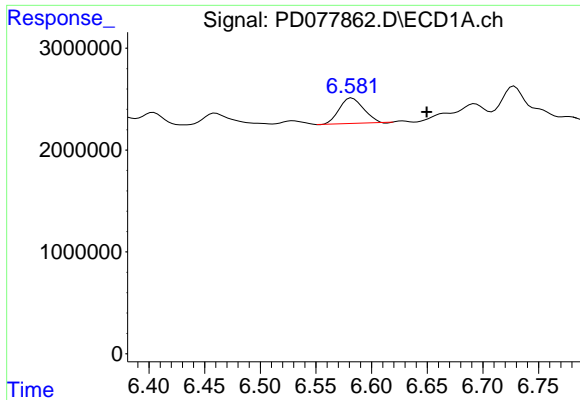
#22 Toxaphene-1
 R.T.: 5.347 min
 Delta R.T.: 0.035 min
 Response: 2418732
 Conc: 204.85 ng/ml



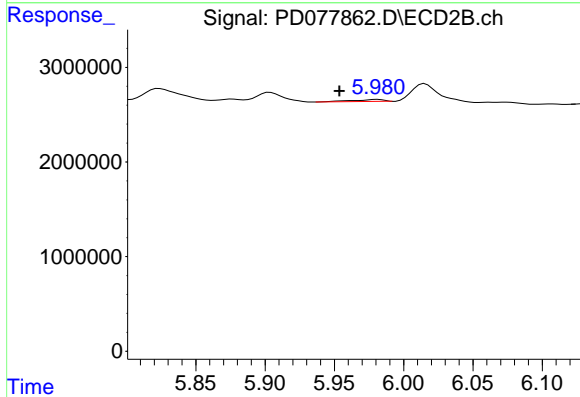
#23 Toxaphene-2
 R.T.: 6.460 min
 Delta R.T.: 0.009 min
 Response: 2027514
 Conc: 60.79 ng/ml



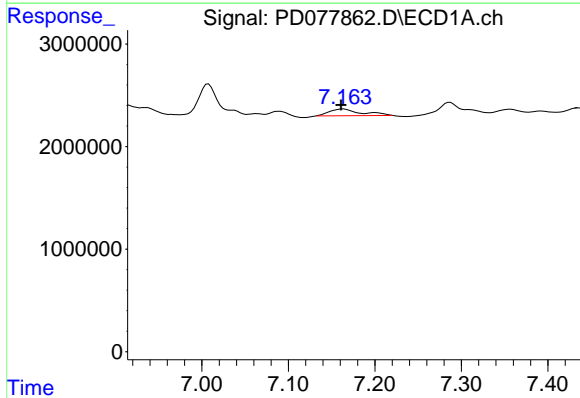
#23 Toxaphene-2
 R.T.: 5.656 min
 Delta R.T.: -0.015 min
 Response: 11708
 Conc: 0.90 ng/ml



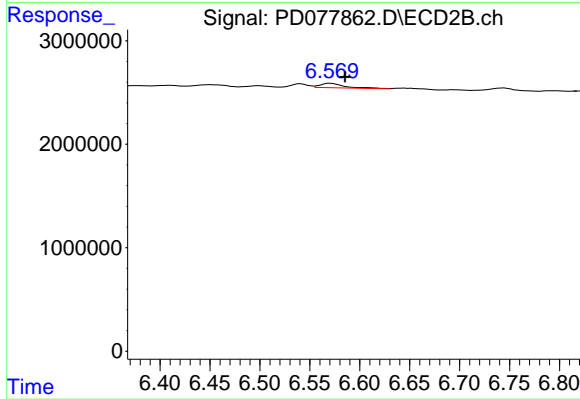
#24 Toxaphene-3
R.T.: 6.583 min
Delta R.T.: -0.067 min
Response: 3789940
Conc: 165.84 ng/ml



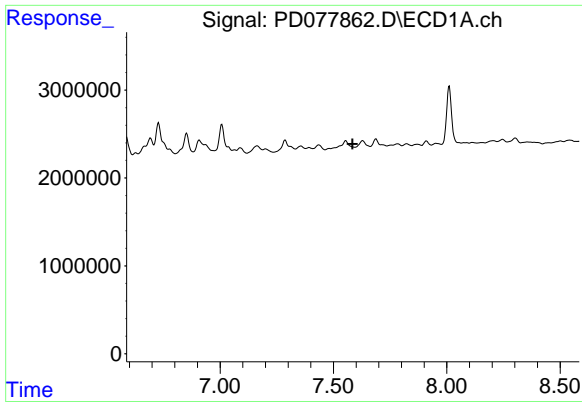
#24 Toxaphene-3
R.T.: 5.981 min
Delta R.T.: 0.027 min
Response: 308051
Conc: 20.47 ng/ml



#25 Toxaphene-4
R.T.: 7.163 min
Delta R.T.: 0.002 min
Response: 1682938
Conc: 22.99 ng/ml

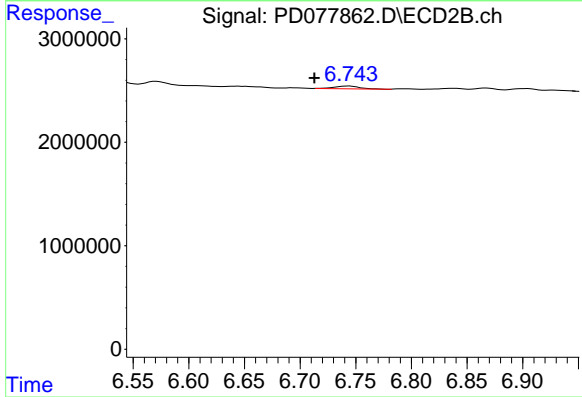


#25 Toxaphene-4
R.T.: 6.571 min
Delta R.T.: -0.015 min
Response: 752161
Conc: 17.51 ng/ml



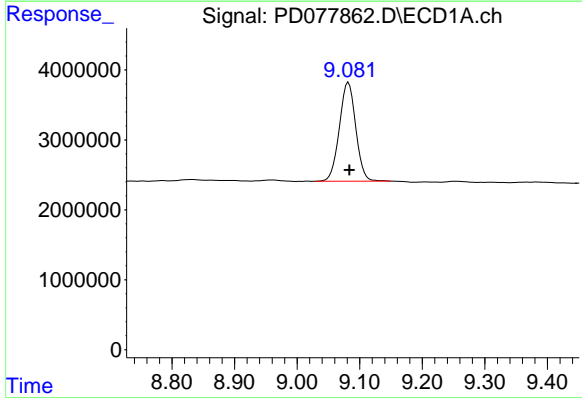
#26 Toxaphene-5

R.T.: 7.629 min
 Delta R.T.: 0.045 min
 Response: -3057
 Conc: N.D.



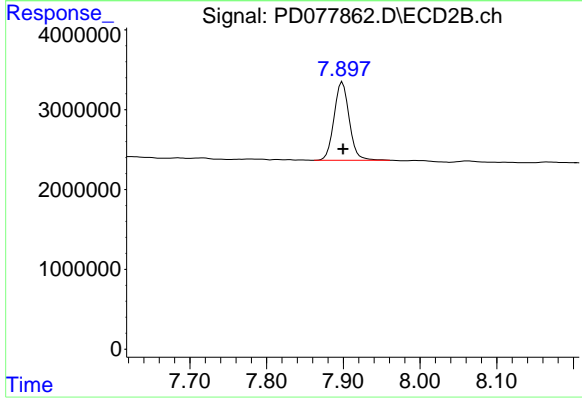
#26 Toxaphene-5

R.T.: 6.744 min
 Delta R.T.: 0.031 min
 Response: 374493
 Conc: 6.29 ng/ml



#27 Decachlorobiphenyl

R.T.: 9.082 min
 Delta R.T.: -0.002 min
 Response: 25781271
 Conc: 8.26 ng/ml



#27 Decachlorobiphenyl

R.T.: 7.899 min
 Delta R.T.: 0.000 min
 Response: 13519986
 Conc: 7.84 ng/ml