

Data Path : Z:\pestpcbsrv\HPCHEM1\ECD_D\Data\PD091223\
 Data File : PD077894.D
 Signal(s) : Signal #1: ECD1A.ch Signal #2: ECD2B.ch
 Acq On : 12 Sep 2023 04:12
 Operator : AR\AJ
 Sample : 04324-21MS
 Misc :
 ALS Vial : 50 Sample Multiplier: 1

Integration File signal 1: autoint1.e
 Integration File signal 2: autoint2.e
 Quant Time: Sep 12 05:16:58 2023
 Quant Method : Z:\pestpcbsrv\HPCHEM1\ECD_D\Method\PD090623CLP.M
 Quant Title : GC Extractables
 QLast Update : Wed Sep 06 16:40:06 2023
 Response via : Initial Calibration
 Integrator: ChemStation

Volume Inj. : 1 µl
 Signal #1 Phase : ZB-MR1 Signal #2 Phase: ZB-MR2
 Signal #1 Info : 30M x 0.32mm x0.5 Signal #2 Info : 30M x 0.32mm x 0.25µm

Compound	RT#1	RT#2	Resp#1	Resp#2	ng/ml	ng/ml

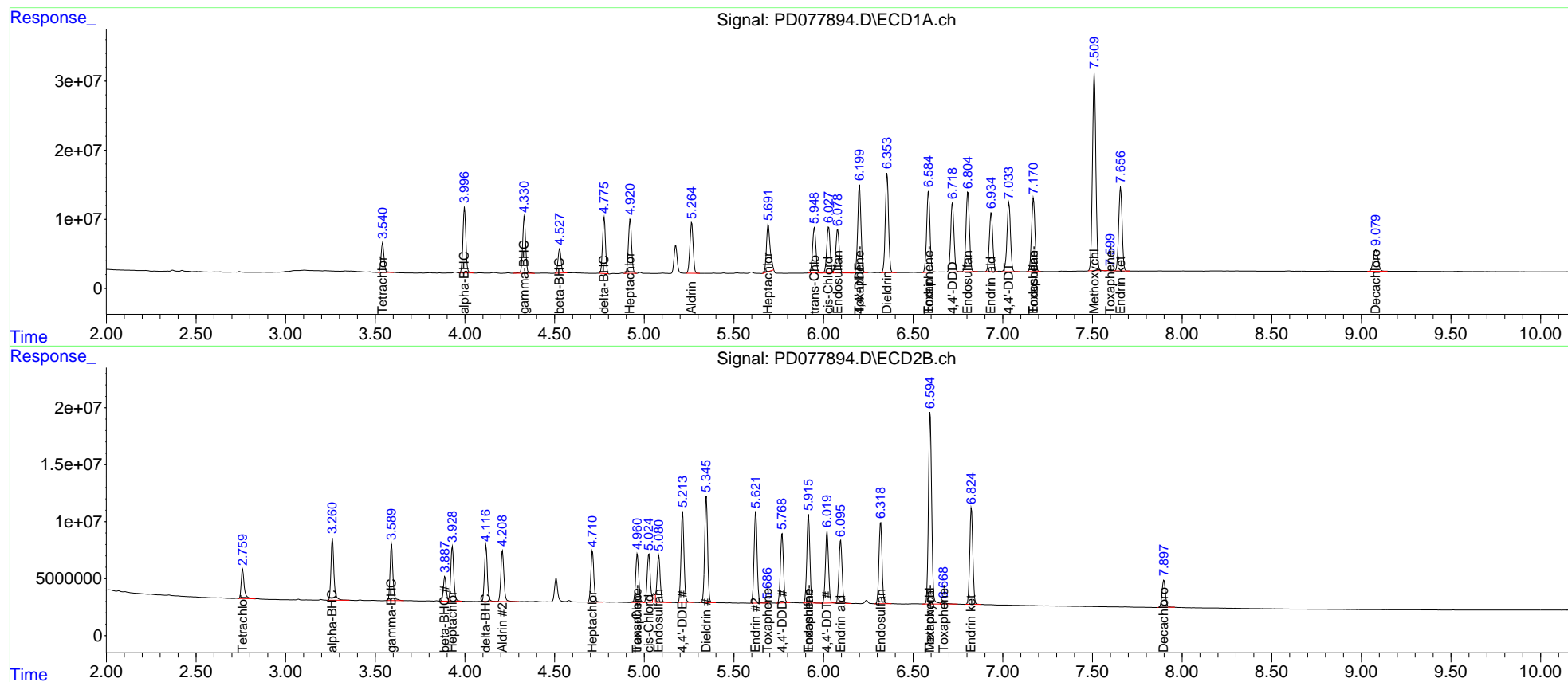
System Monitoring Compounds						
1) SA Tetrachlo...	3.541	2.760	48901035	29931758	19.270	20.253
27) SA Decachlor...	9.080	7.898	58583848	31508202	18.753	19.455
Target Compounds						
2) A alpha-BHC	3.998	3.261	106.8E6	61494037	24.947	27.129
3) MA gamma-BHC...	4.331	3.591	97134766	54800508	24.024	25.381
4) MA Heptachlor	4.922	3.930	96200829	56415937	23.021	25.375
5) MB Aldrin	5.265	4.209	92848930	53656490	22.241	23.939
6) B beta-BHC	4.528	3.888	41410277	23233928	22.540	23.514
7) B delta-BHC	4.777	4.118	92935662	53896447	23.145	24.179
8) B Heptachlo...	5.692	4.711	96245266	52326898	24.903	24.912
9) A Endosulfan I	6.079	5.081	83067350	51167648	24.747	28.506
10) B trans-Chl...	5.949	4.962	85113944	50827199	22.860	25.453
11) B cis-Chlor...	6.029	5.026	87435556	51292360	22.687	25.082
12) B 4,4'-DDE	6.201	5.214	159.9E6	93333708	45.092	49.132
13) MA Dieldrin	6.355	5.346	180.4E6	107.9E6	48.203	52.217
14) MA Endrin	6.586	5.622	151.3E6	95783268	49.041	52.388
15) B Endosulfa...	6.805	5.916	153.0E6	92533458	46.206	51.132
16) A 4,4'-DDD	6.719	5.769	128.7E6	71613255	48.379	53.206
17) MA 4,4'-DDT	7.034	6.020	136.0E6	75353224	49.623	53.315
18) B Endrin al...	6.936	6.096	113.3E6	67241873	43.589	47.803
19) B Endosulfa...	7.171	6.319	141.2E6	85356828	46.580	51.661
20) A Methoxychlor	7.510	6.595	376.8E6	208.4E6	241.618	267.061
21) B Endrin ke...	7.657	6.825	160.7E6	100.8E6	46.680	52.616
22) Toxaphene-1	6.201f	4.962	159.9E6	50827199	5991.070	4869.536
23) Toxaphene-2	0.000	5.687	0	53611	N.D.	4.446
24) Toxaphene-3	6.586f	5.916f	151.3E6	92533458	6554.534	6784.848
25) Toxaphene-4	7.171	6.595	141.2E6	208.4E6	1964.445	5399.868 #
26) Toxaphene-5	7.600	6.669f	1886250	3292470	36.196	59.320 #

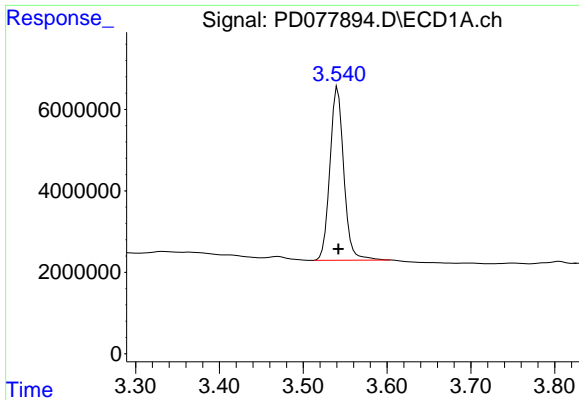
(f)=RT Delta > 1/2 Window (#)=Amounts differ by > 25% (m)=manual int.

Data Path : Z:\pestpcbsrv\HPCHEM1\ECD_D\Data\PD091223\
 Data File : PD077894.D
 Signal(s) : Signal #1: ECD1A.ch Signal #2: ECD2B.ch
 Acq On : 12 Sep 2023 04:12
 Operator : AR\AJ
 Sample : 04324-21MS
 Misc :
 ALS Vial : 50 Sample Multiplier: 1

Integration File signal 1: autoint1.e
 Integration File signal 2: autoint2.e
 Quant Time: Sep 12 05:16:58 2023
 Quant Method : Z:\pestpcbsrv\HPCHEM1\ECD_D\Method\PD090623CLP.M
 Quant Title : GC Extractables
 QLast Update : Wed Sep 06 16:40:06 2023
 Response via : Initial Calibration
 Integrator: ChemStation

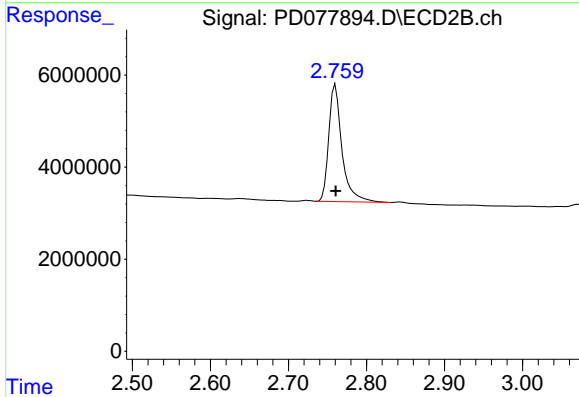
Volume Inj. : 1 µl
 Signal #1 Phase : ZB-MR1 Signal #2 Phase: ZB-MR2
 Signal #1 Info : 30M x 0.32mm x0.5 Signal #2 Info : 30M x 0.32mm x 0.25µm





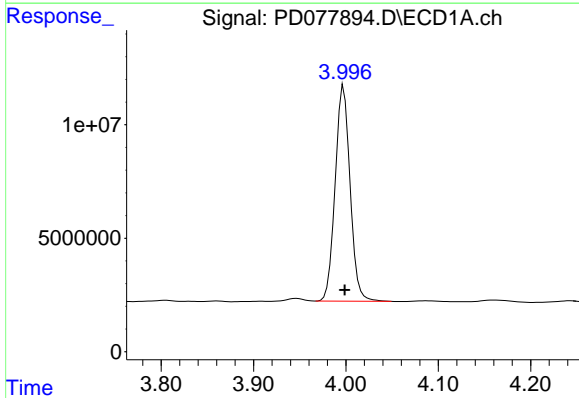
#1 Tetrachloro-m-xylene

R.T.: 3.541 min
Delta R.T.: 0.000 min
Response: 48901035
Conc: 19.27 ng/ml



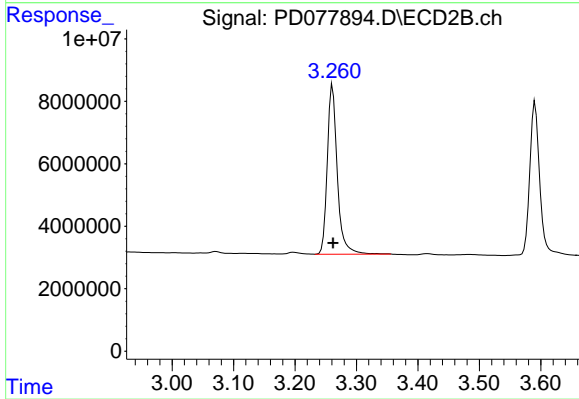
#1 Tetrachloro-m-xylene

R.T.: 2.760 min
Delta R.T.: 0.000 min
Response: 29931758
Conc: 20.25 ng/ml



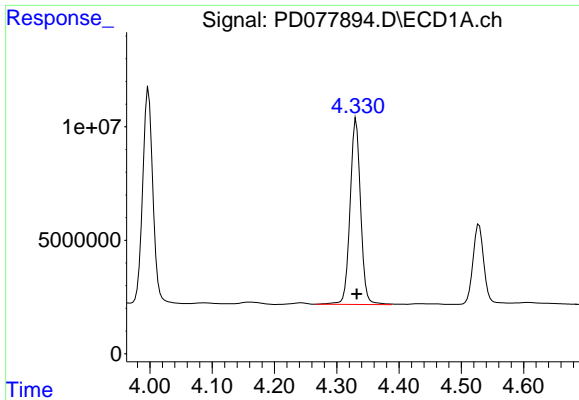
#2 alpha-BHC

R.T.: 3.998 min
Delta R.T.: 0.000 min
Response: 106817375
Conc: 24.95 ng/ml

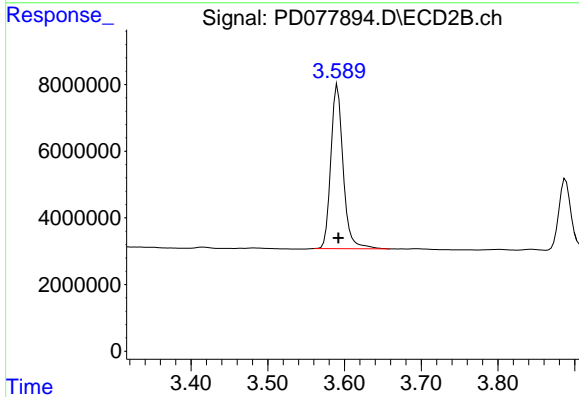


#2 alpha-BHC

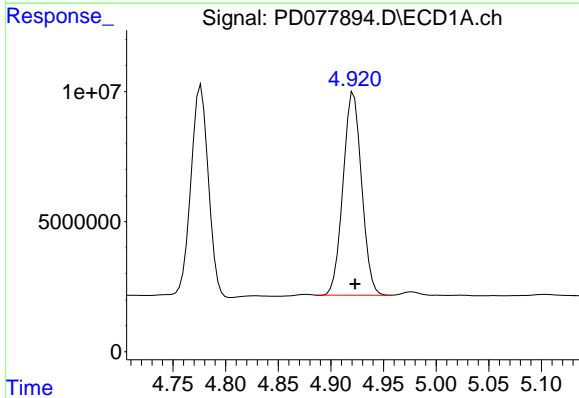
R.T.: 3.261 min
Delta R.T.: 0.000 min
Response: 61494037
Conc: 27.13 ng/ml



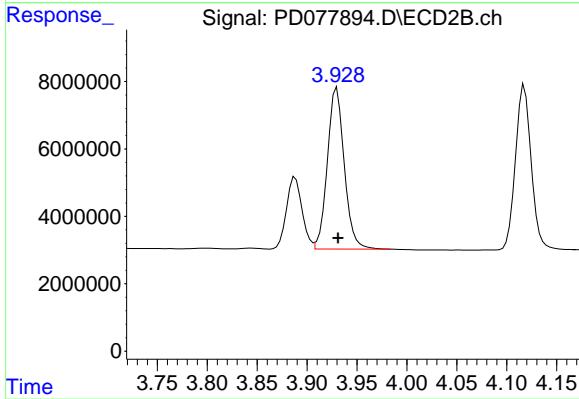
#3 gamma-BHC (Lindane)
 R.T.: 4.331 min
 Delta R.T.: 0.000 min
 Response: 97134766
 Conc: 24.02 ng/ml



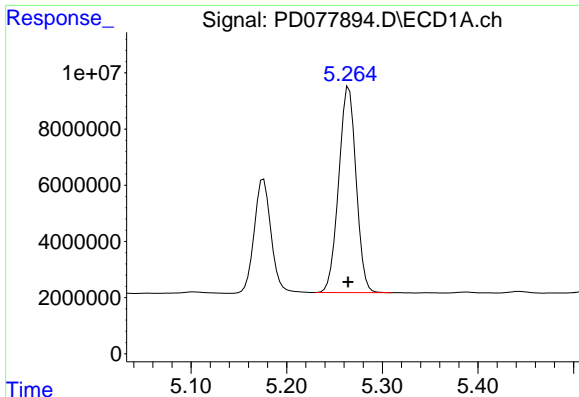
#3 gamma-BHC (Lindane)
 R.T.: 3.591 min
 Delta R.T.: -0.001 min
 Response: 54800508
 Conc: 25.38 ng/ml



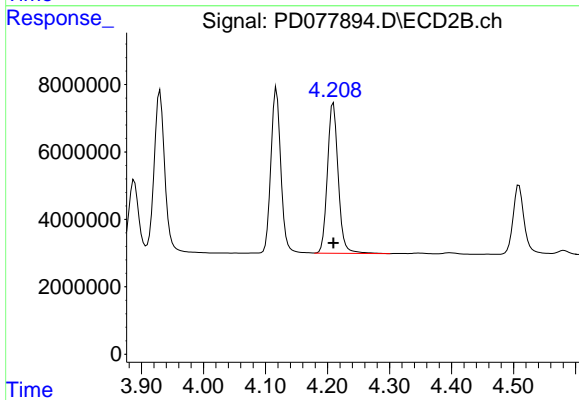
#4 Heptachlor
 R.T.: 4.922 min
 Delta R.T.: -0.001 min
 Response: 96200829
 Conc: 23.02 ng/ml



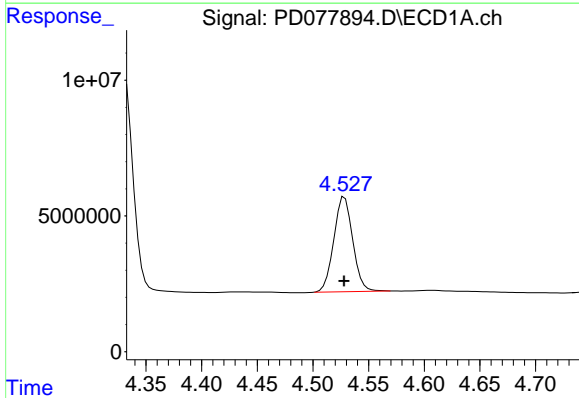
#4 Heptachlor
 R.T.: 3.930 min
 Delta R.T.: -0.001 min
 Response: 56415937
 Conc: 25.38 ng/ml



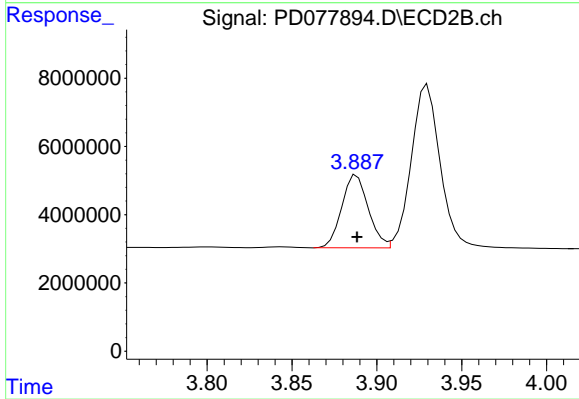
#5 Aldrin
 R.T.: 5.265 min
 Delta R.T.: 0.000 min
 Response: 92848930
 Conc: 22.24 ng/ml



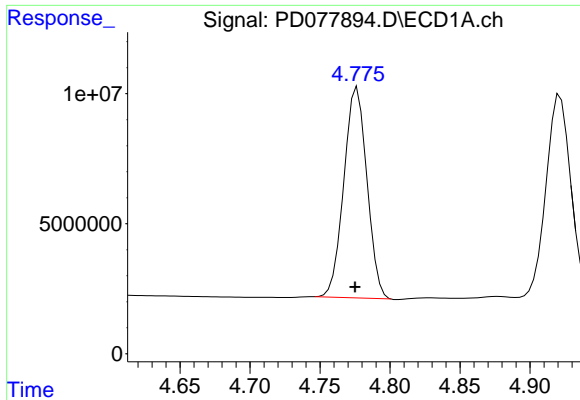
#5 Aldrin
 R.T.: 4.209 min
 Delta R.T.: 0.000 min
 Response: 53656490
 Conc: 23.94 ng/ml



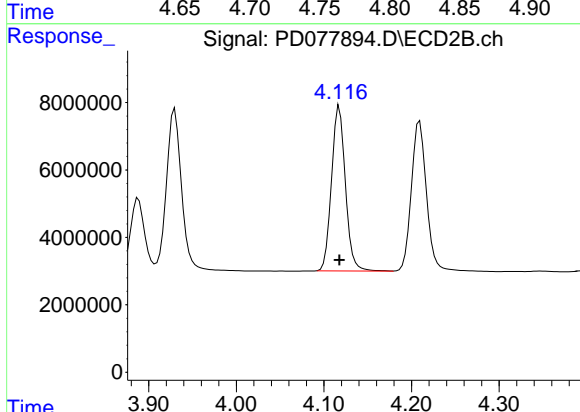
#6 beta-BHC
 R.T.: 4.528 min
 Delta R.T.: 0.000 min
 Response: 41410277
 Conc: 22.54 ng/ml



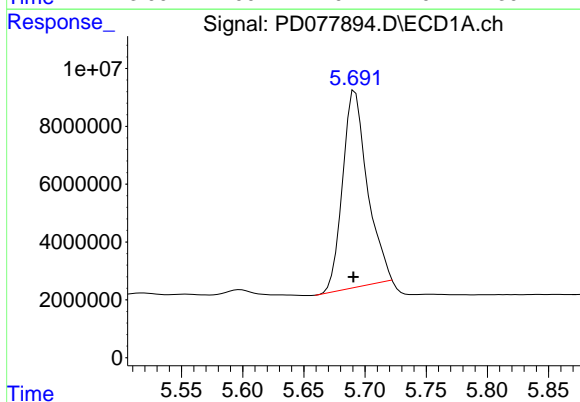
#6 beta-BHC
 R.T.: 3.888 min
 Delta R.T.: 0.000 min
 Response: 23233928
 Conc: 23.51 ng/ml



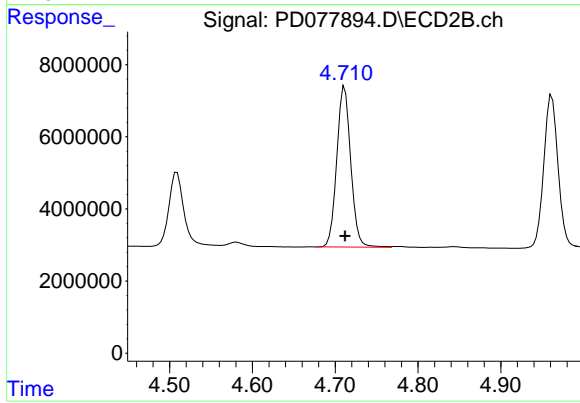
#7 delta-BHC
 R.T.: 4.777 min
 Delta R.T.: 0.002 min
 Response: 92935662
 Conc: 23.14 ng/ml



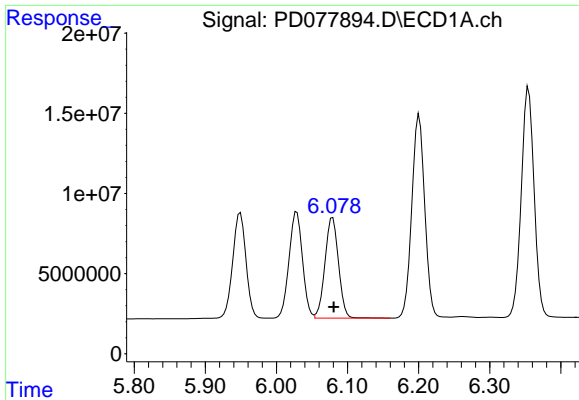
#7 delta-BHC
 R.T.: 4.118 min
 Delta R.T.: 0.000 min
 Response: 53896447
 Conc: 24.18 ng/ml



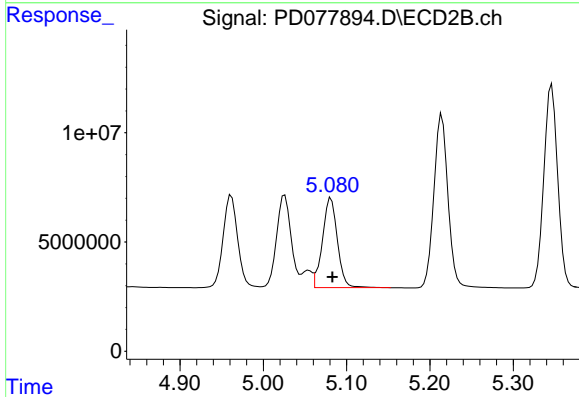
#8 Heptachlor epoxide
 R.T.: 5.692 min
 Delta R.T.: 0.001 min
 Response: 96245266
 Conc: 24.90 ng/ml



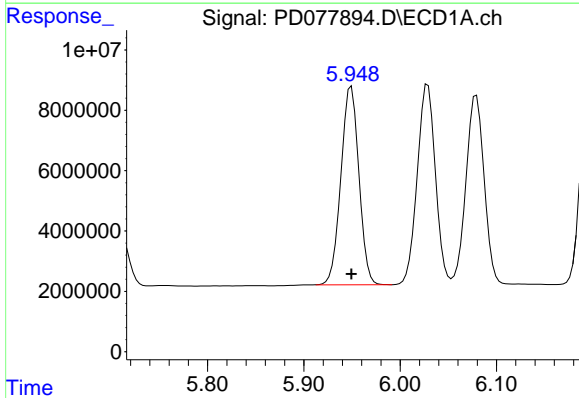
#8 Heptachlor epoxide
 R.T.: 4.711 min
 Delta R.T.: 0.000 min
 Response: 52326898
 Conc: 24.91 ng/ml



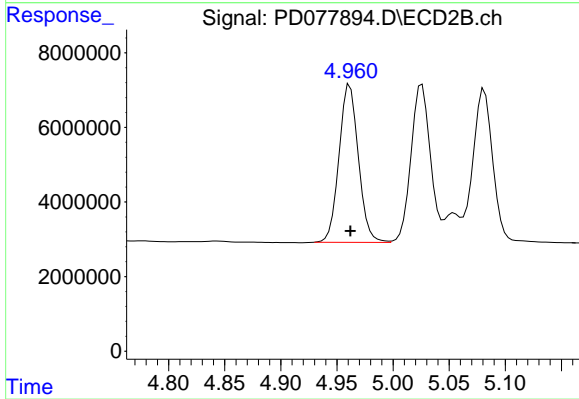
#9 Endosulfan I
R.T.: 6.079 min
Delta R.T.: -0.002 min
Response: 83067350
Conc: 24.75 ng/ml



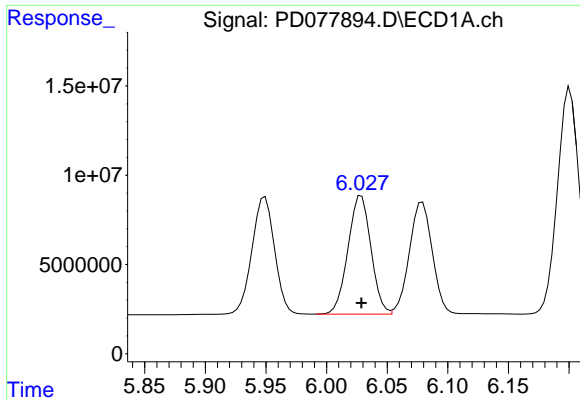
#9 Endosulfan I
R.T.: 5.081 min
Delta R.T.: -0.002 min
Response: 51167648
Conc: 28.51 ng/ml



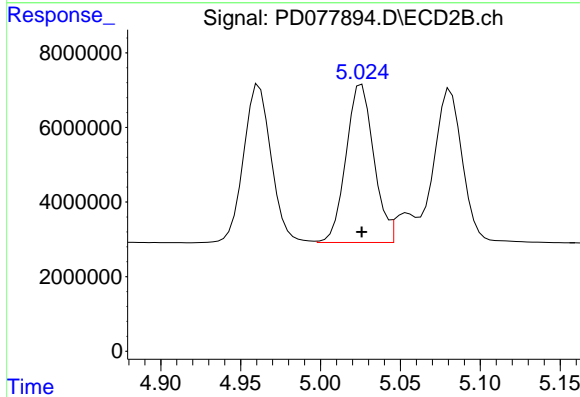
#10 trans-Chlordane
R.T.: 5.949 min
Delta R.T.: 0.000 min
Response: 85113944
Conc: 22.86 ng/ml



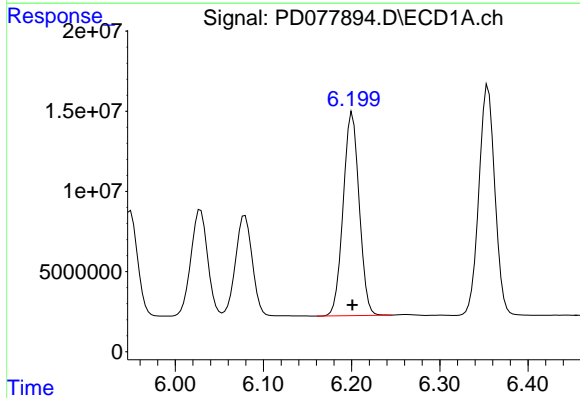
#10 trans-Chlordane
R.T.: 4.962 min
Delta R.T.: 0.000 min
Response: 50827199
Conc: 25.45 ng/ml



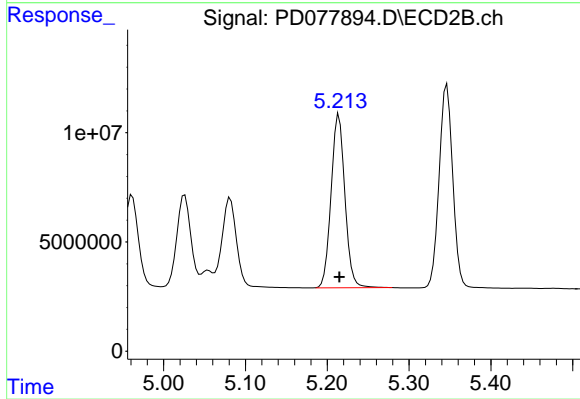
#11 cis-Chlordane
R.T.: 6.029 min
Delta R.T.: 0.000 min
Response: 87435556
Conc: 22.69 ng/ml



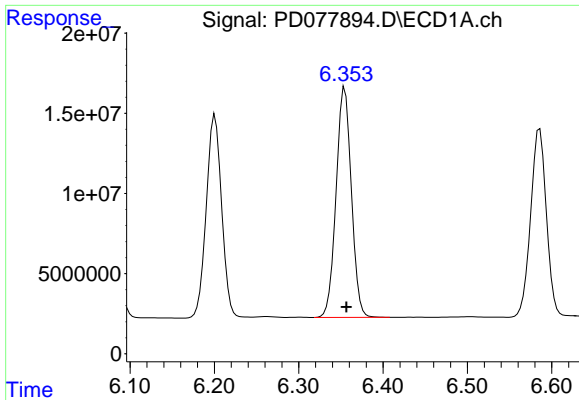
#11 cis-Chlordane
R.T.: 5.026 min
Delta R.T.: 0.000 min
Response: 51292360
Conc: 25.08 ng/ml



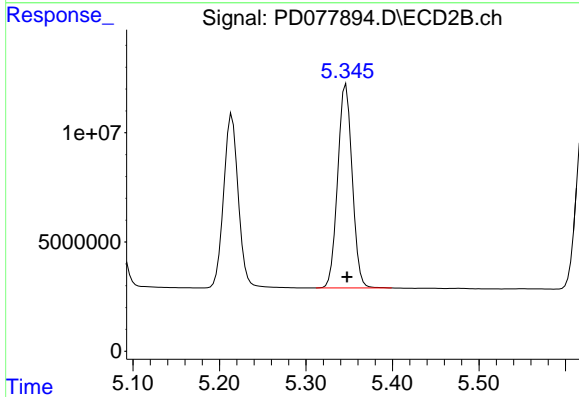
#12 4,4'-DDE
R.T.: 6.201 min
Delta R.T.: 0.000 min
Response: 159857692
Conc: 45.09 ng/ml



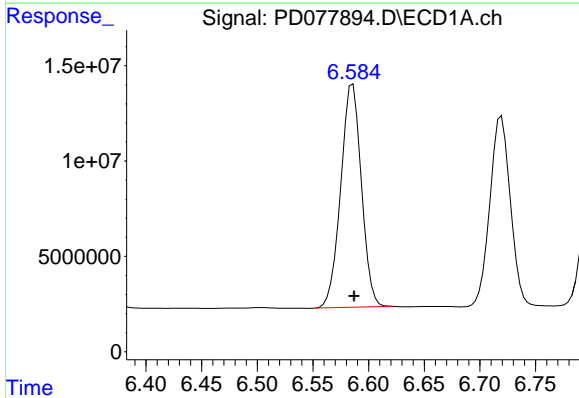
#12 4,4'-DDE
R.T.: 5.214 min
Delta R.T.: 0.000 min
Response: 93333708
Conc: 49.13 ng/ml



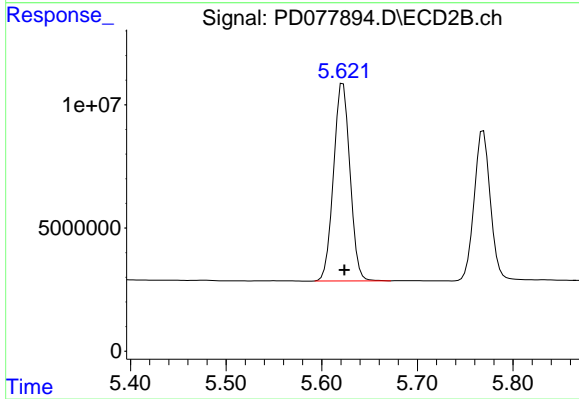
#13 Dieldrin
R.T.: 6.355 min
Delta R.T.: -0.002 min
Response: 180427635
Conc: 48.20 ng/ml



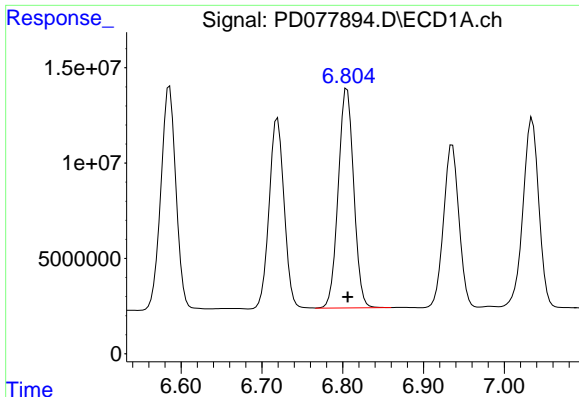
#13 Dieldrin
R.T.: 5.346 min
Delta R.T.: -0.001 min
Response: 107901588
Conc: 52.22 ng/ml



#14 Endrin
R.T.: 6.586 min
Delta R.T.: -0.001 min
Response: 151305179
Conc: 49.04 ng/ml

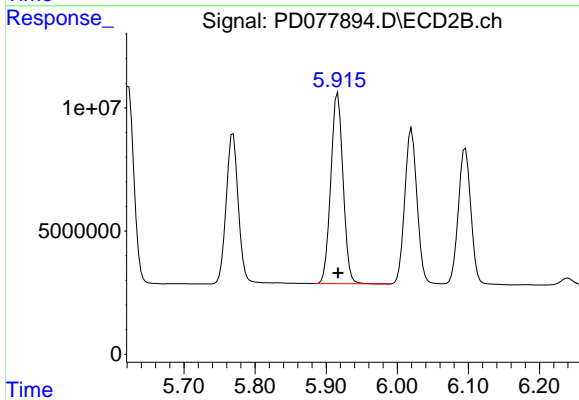


#14 Endrin
R.T.: 5.622 min
Delta R.T.: -0.001 min
Response: 95783268
Conc: 52.39 ng/ml



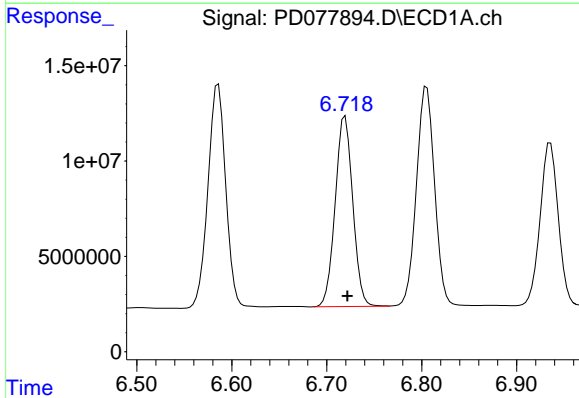
#15 Endosulfan II

R.T.: 6.805 min
Delta R.T.: 0.000 min
Response: 152994288
Conc: 46.21 ng/ml



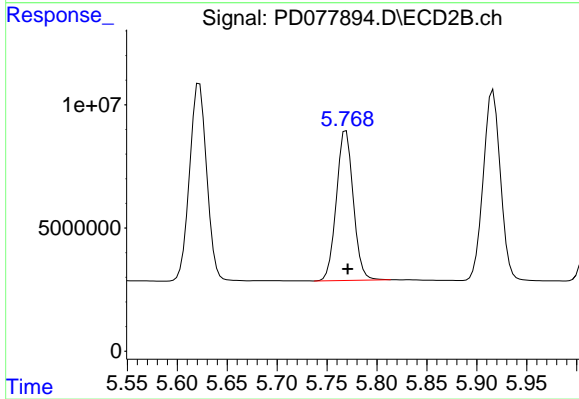
#15 Endosulfan II

R.T.: 5.916 min
Delta R.T.: 0.000 min
Response: 92533458
Conc: 51.13 ng/ml



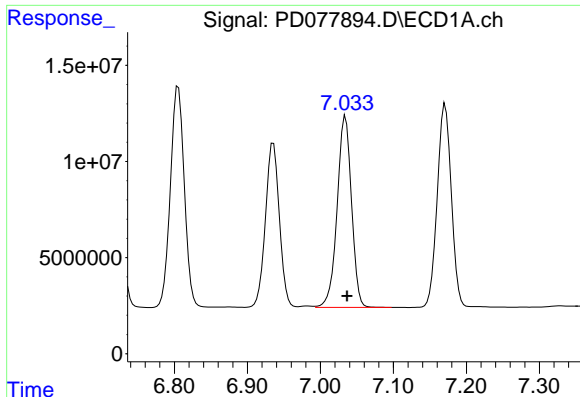
#16 4,4'-DDD

R.T.: 6.719 min
Delta R.T.: -0.002 min
Response: 128682246
Conc: 48.38 ng/ml



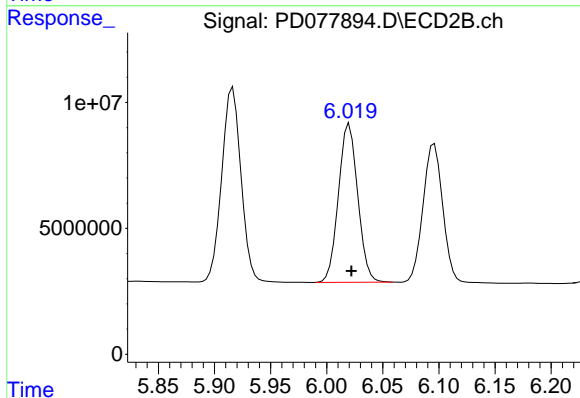
#16 4,4'-DDD

R.T.: 5.769 min
Delta R.T.: -0.002 min
Response: 71613255
Conc: 53.21 ng/ml



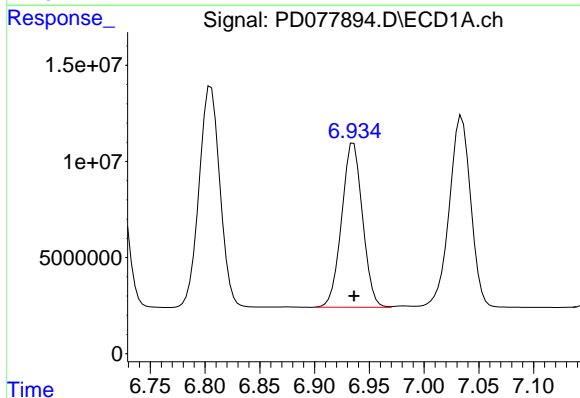
#17 4,4'-DDT

R.T.: 7.034 min
Delta R.T.: -0.002 min
Response: 135953741
Conc: 49.62 ng/ml



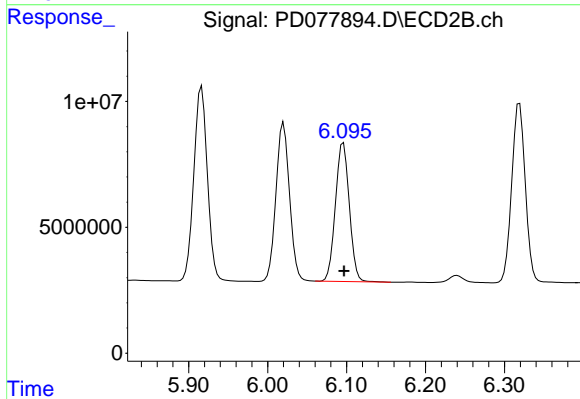
#17 4,4'-DDT

R.T.: 6.020 min
Delta R.T.: -0.002 min
Response: 75353224
Conc: 53.32 ng/ml



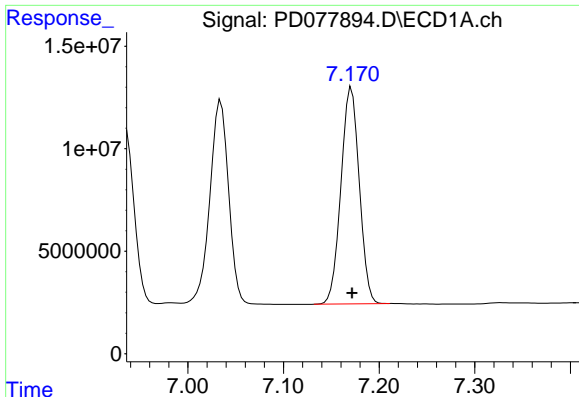
#18 Endrin aldehyde

R.T.: 6.936 min
Delta R.T.: 0.000 min
Response: 113267797
Conc: 43.59 ng/ml



#18 Endrin aldehyde

R.T.: 6.096 min
Delta R.T.: 0.000 min
Response: 67241873
Conc: 47.80 ng/ml



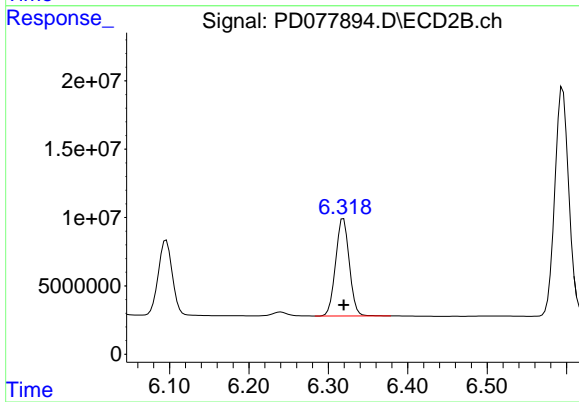
#19 Endosulfan Sulfate

R.T.: 7.171 min

Delta R.T.: 0.000 min

Response: 141151786

Conc: 46.58 ng/ml



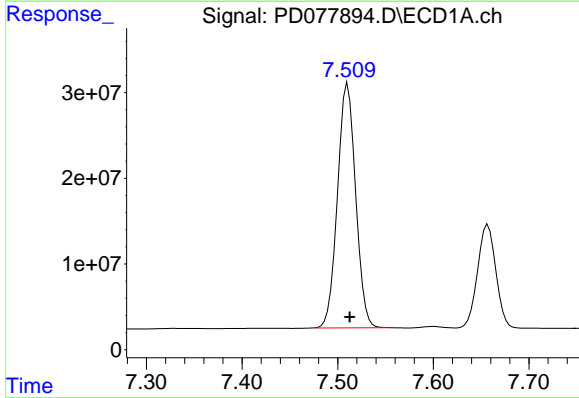
#19 Endosulfan Sulfate

R.T.: 6.319 min

Delta R.T.: 0.000 min

Response: 85356828

Conc: 51.66 ng/ml



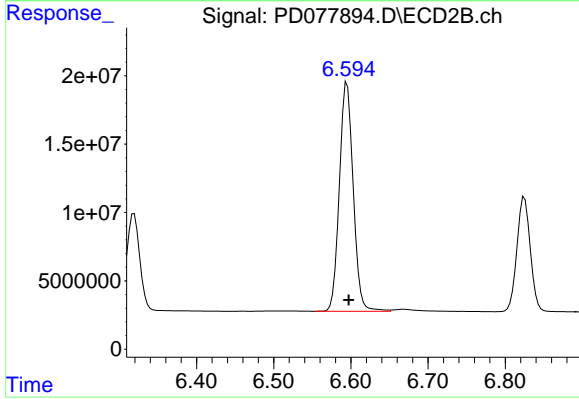
#20 Methoxychlor

R.T.: 7.510 min

Delta R.T.: -0.002 min

Response: 376846329

Conc: 241.62 ng/ml



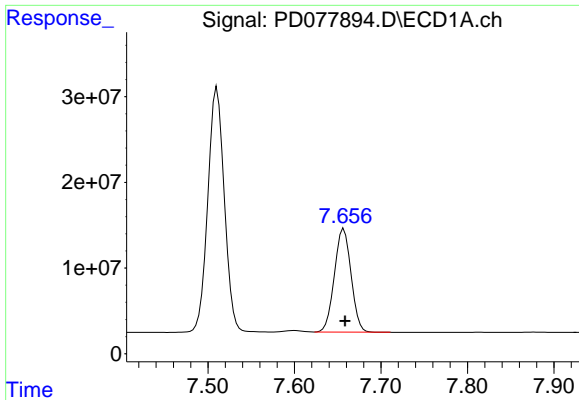
#20 Methoxychlor

R.T.: 6.595 min

Delta R.T.: -0.002 min

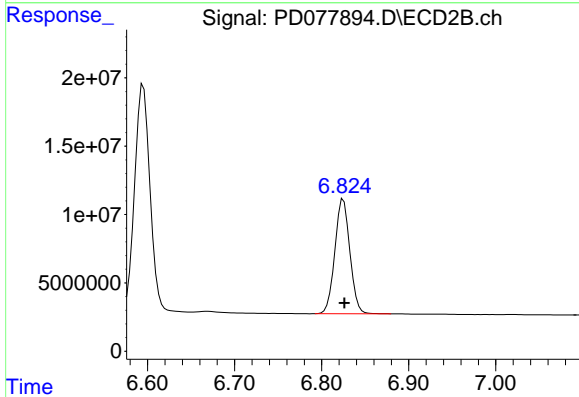
Response: 208391983

Conc: 267.06 ng/ml



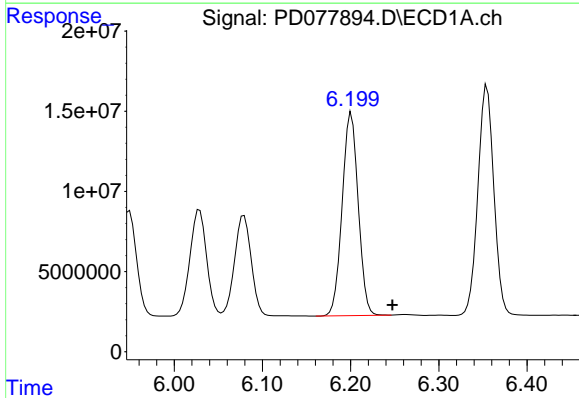
#21 Endrin ketone

R.T.: 7.657 min
 Delta R.T.: -0.001 min
 Response: 160719442
 Conc: 46.68 ng/ml



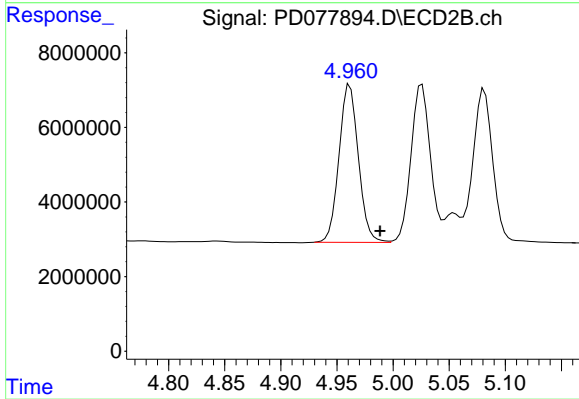
#21 Endrin ketone

R.T.: 6.825 min
 Delta R.T.: 0.000 min
 Response: 100811454
 Conc: 52.62 ng/ml



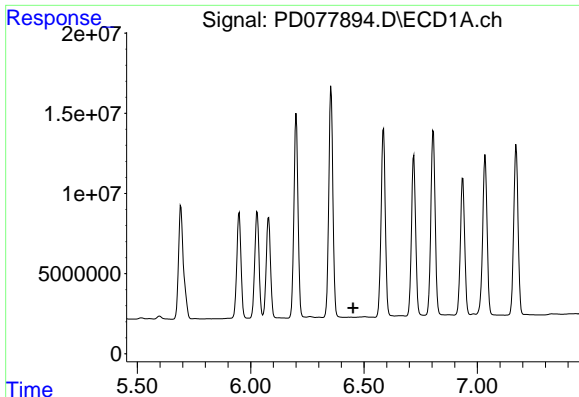
#22 Toxaphene-1

R.T.: 6.201 min
 Delta R.T.: -0.047 min
 Response: 159857692
 Conc: 5991.07 ng/ml



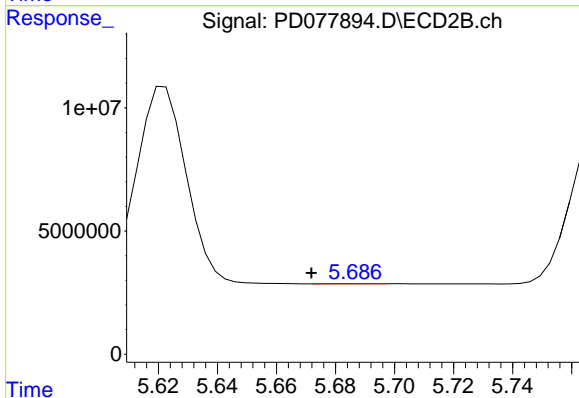
#22 Toxaphene-1

R.T.: 4.962 min
 Delta R.T.: -0.027 min
 Response: 50827199
 Conc: 4869.54 ng/ml



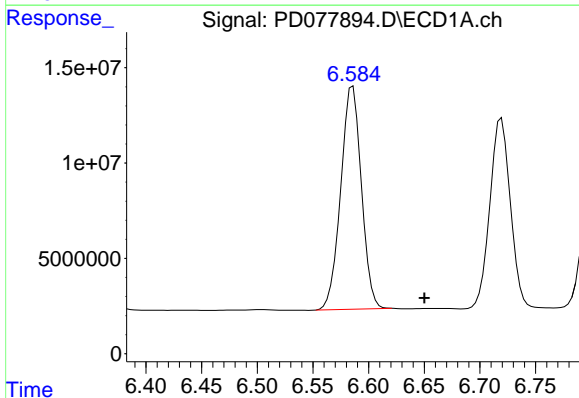
#23 Toxaphene-2

R.T.: 0.000 min
 Exp R.T.: 6.452 min
 Response: 0
 Conc: N.D.



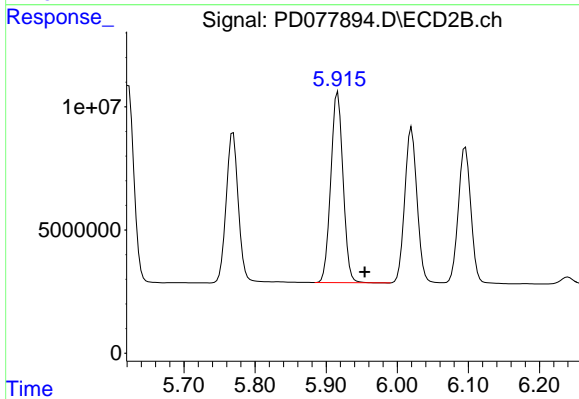
#23 Toxaphene-2

R.T.: 5.687 min
 Delta R.T.: 0.015 min
 Response: 53611
 Conc: 4.45 ng/ml



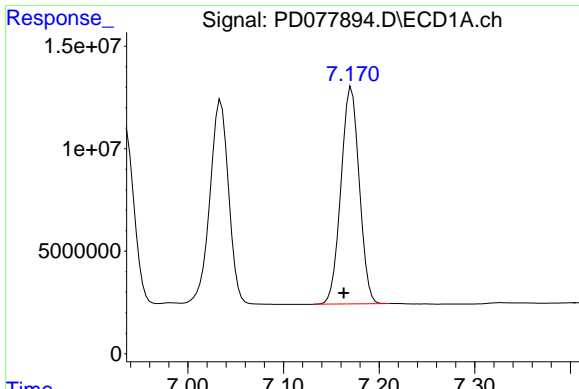
#24 Toxaphene-3

R.T.: 6.586 min
 Delta R.T.: -0.065 min
 Response: 151305179
 Conc: 6554.53 ng/ml

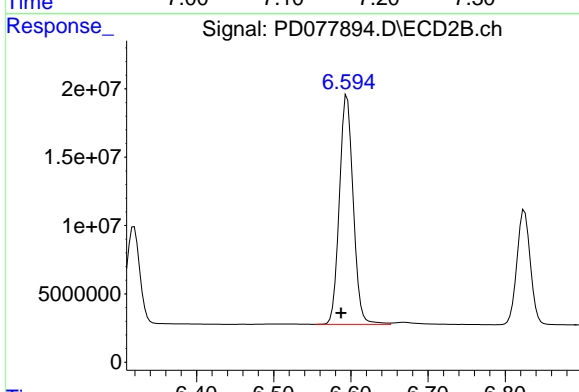


#24 Toxaphene-3

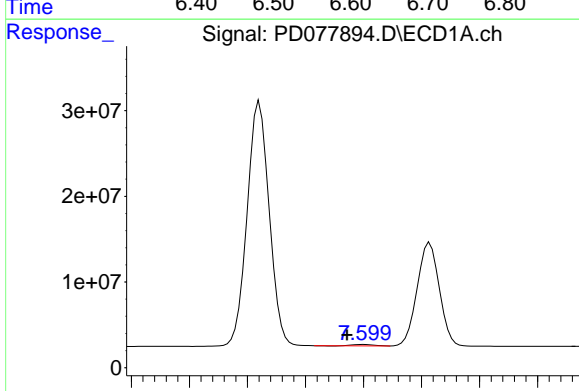
R.T.: 5.916 min
 Delta R.T.: -0.038 min
 Response: 92533458
 Conc: 6784.85 ng/ml



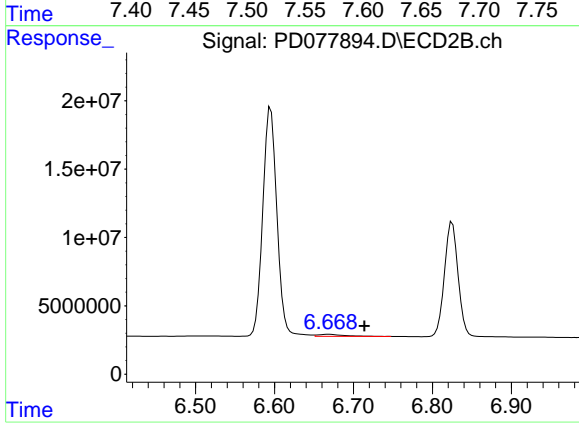
#25 Toxaphene-4
 R.T.: 7.171 min
 Delta R.T.: 0.008 min
 Response: 141151786
 Conc: 1964.44 ng/ml



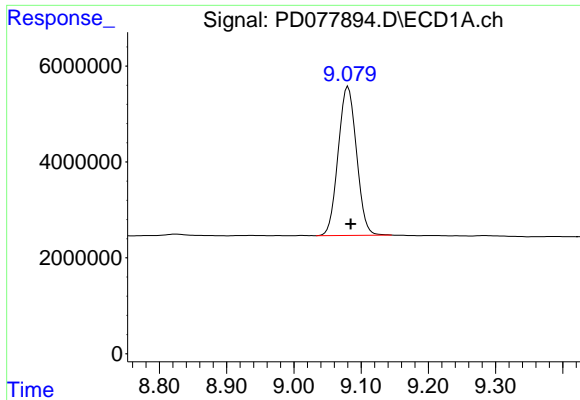
#25 Toxaphene-4
 R.T.: 6.595 min
 Delta R.T.: 0.008 min
 Response: 208391983
 Conc: 5399.87 ng/ml



#26 Toxaphene-5
 R.T.: 7.600 min
 Delta R.T.: 0.014 min
 Response: 1886250
 Conc: 36.20 ng/ml

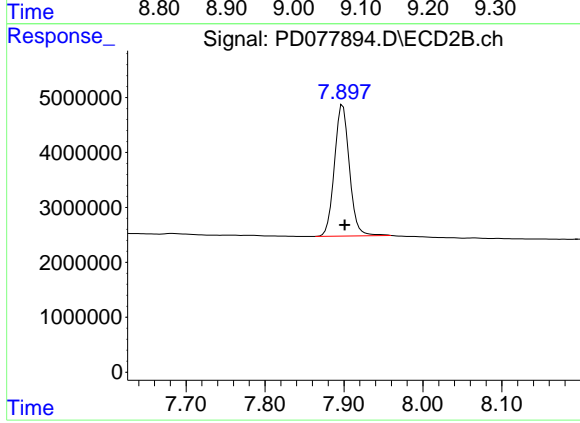


#26 Toxaphene-5
 R.T.: 6.669 min
 Delta R.T.: -0.045 min
 Response: 3292470
 Conc: 59.32 ng/ml



#27 Decachlorobiphenyl

R.T.: 9.080 min
Delta R.T.: -0.004 min
Response: 58583848
Conc: 18.75 ng/ml



#27 Decachlorobiphenyl

R.T.: 7.898 min
Delta R.T.: -0.002 min
Response: 31508202
Conc: 19.46 ng/ml