

Data Path : Z:\pestpcbsrv\HPCHEM1\ECD_D\Data\PD091223\
 Data File : PD077860.D
 Signal(s) : Signal #1: ECD1A.ch Signal #2: ECD2B.ch
 Acq On : 11 Sep 2023 19:46
 Operator : AR\AJ
 Sample : PEM165
 Misc :
 ALS Vial : 3 Sample Multiplier: 1

Instrument :
 ECD_D
 ClientSampleId :
 PEM175

Manual Integrations
APPROVED

Reviewed By :Abdul Mirza 09/12/2023
 Supervised By :Ankita Jodhani 09/12/2023

Integration File signal 1: autoint1.e
 Integration File signal 2: autoint2.e
 Quant Time: Sep 11 22:50:57 2023
 Quant Method : Z:\pestpcbsrv\HPCHEM1\ECD_D\Method\PD090623CLP.M
 Quant Title : GC Extractables
 QLast Update : Wed Sep 06 16:40:06 2023
 Response via : Initial Calibration
 Integrator: ChemStation

Volume Inj. : 1 µl
 Signal #1 Phase : ZB-MR1 Signal #2 Phase: ZB-MR2
 Signal #1 Info : 30M x 0.32mm x0.5 Signal #2 Info : 30M x 0.32mm x 0.25µm

Compound	RT#1	RT#2	Resp#1	Resp#2	ng/ml	ng/ml

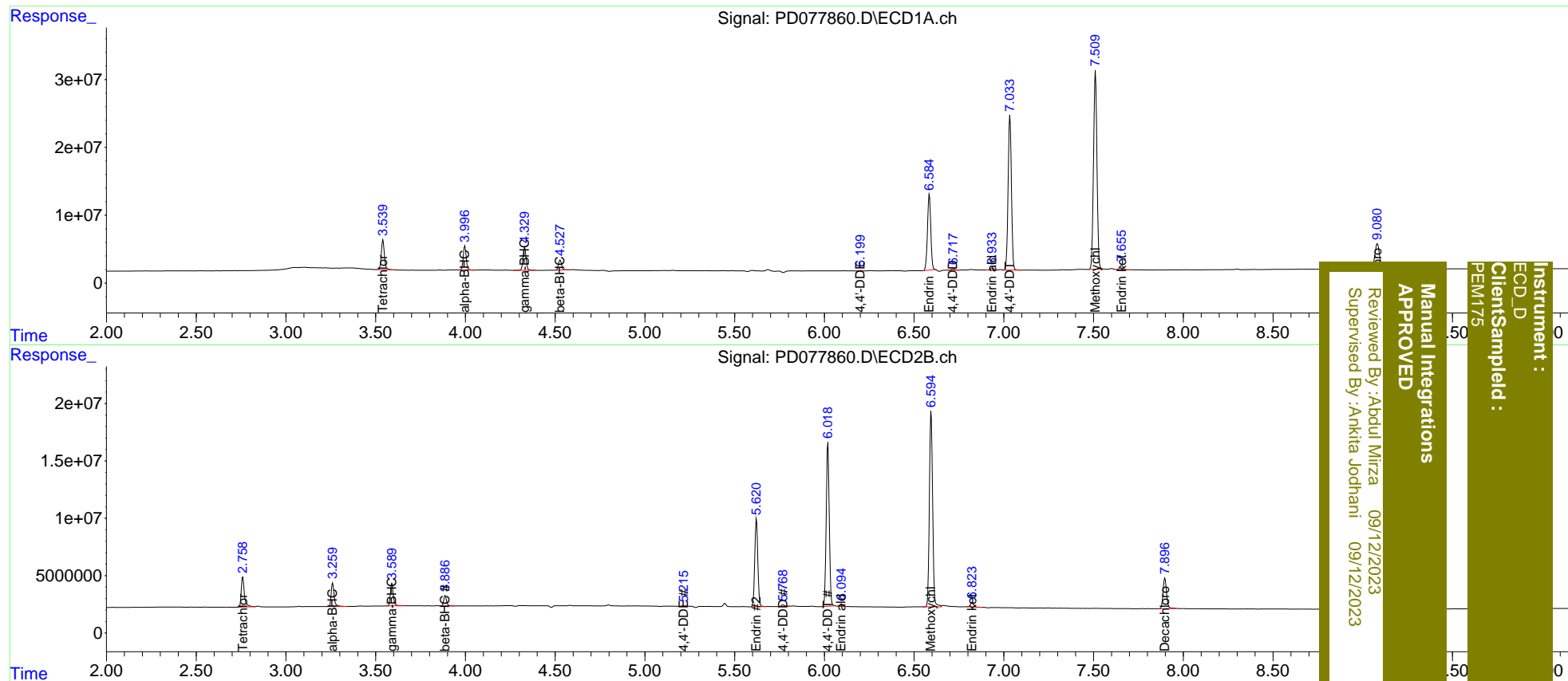
System Monitoring Compounds						
1) SA Tetrachlo...	3.541	2.760	51647958	31915295	20.352	21.595
27) SA Decachlor...	9.081	7.898	67250406	35422435	21.528	21.872
Target Compounds						
2) A alpha-BHC	3.997	3.261	41046683	23494967	9.586	10.365
3) MA gamma-BHC...	4.331	3.591	40501749	22121572	10.017	10.246
6) B beta-BHC	4.528	3.888	17997634	9947780	9.796	10.068
12) B 4,4'-DDE	6.199	5.215	587717	481305	0.166m	0.253m#
14) MA Endrin	6.585	5.622	142.8E6	91350865	46.287	49.964
16) A 4,4'-DDD	6.719	5.770	2938423	1655148	1.105	1.230
17) MA 4,4'-DDT	7.034	6.020	292.2E6	169.3E6	106.644	119.774
18) B Endrin al...	6.935	6.094	4106949	2486825	1.580	1.768m
20) A Methoxychlor	7.511	6.595	387.0E6	214.0E6	248.107	274.300
21) B Endrin ke...	7.656	6.824	8042402	4712482	2.336	2.460

(f)=RT Delta > 1/2 Window (#)=Amounts differ by > 25% (m)=manual int.

Data Path : Z:\pestpcbsrv\HPCHEM1\ECD_D\Data\PD091223\
 Data File : PD077860.D
 Signal(s) : Signal #1: ECD1A.ch Signal #2: ECD2B.ch
 Acq On : 11 Sep 2023 19:46
 Operator : AR\AJ
 Sample : PEM165
 Misc :
 ALS Vial : 3 Sample Multiplier: 1

Integration File signal 1: autoint1.e
 Integration File signal 2: autoint2.e
 Quant Time: Sep 11 22:50:57 2023
 Quant Method : Z:\pestpcbsrv\HPCHEM1\ECD_D\Method\PD090623CLP.M
 Quant Title : GC Extractables
 QLast Update : Wed Sep 06 16:40:06 2023
 Response via : Initial Calibration
 Integrator: ChemStation

Volume Inj. : 1 µl
 Signal #1 Phase : ZB-MR1 Signal #2 Phase: ZB-MR2
 Signal #1 Info : 30M x 0.32mm x0.5 Signal #2 Info : 30M x 0.32mm x 0.25µm



Instrument : ECD_D
 Client/Sampled : PEM175
 Manual Integrations APPROVED
 Reviewed By : Aboul Mirza 09/12/2023
 Supervised By : Ankita Jodhani 09/12/2023