

Data Path : Z:\pestpcbsrv\HPCHEM1\ECD_D\Data\PD091224\
 Data File : PD085030.D
 Signal(s) : Signal #1: ECD1A.ch Signal #2: ECD2B.ch
 Acq On : 12 Sep 2024 10:31
 Operator : AR\AJ
 Sample : PIBLK114
 Misc :
 ALS Vial : 2 Sample Multiplier: 1

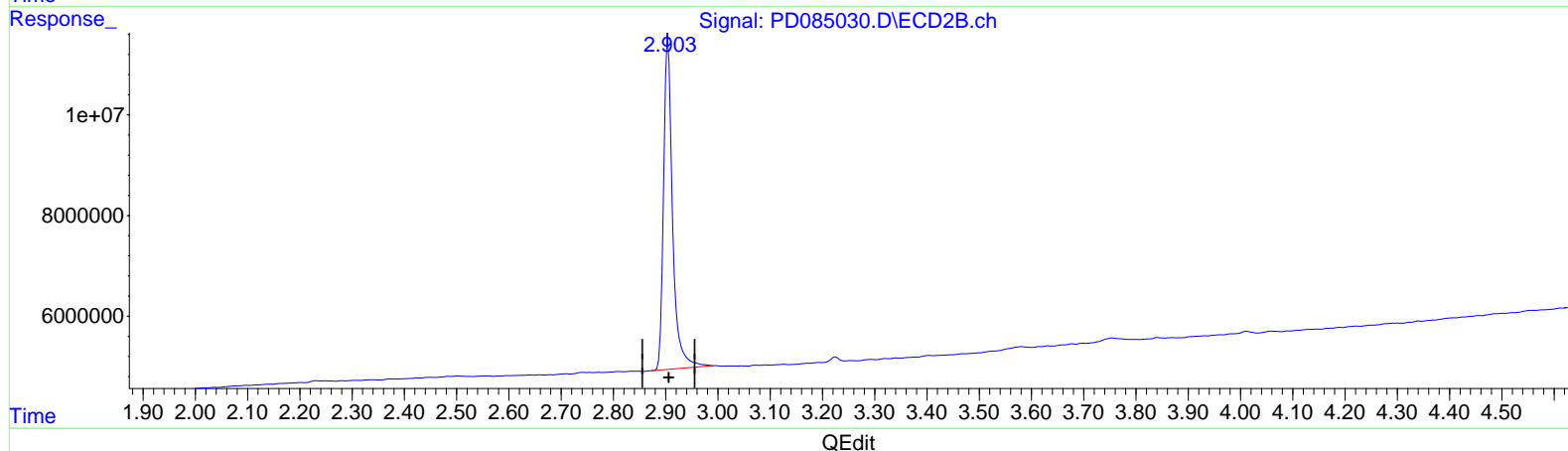
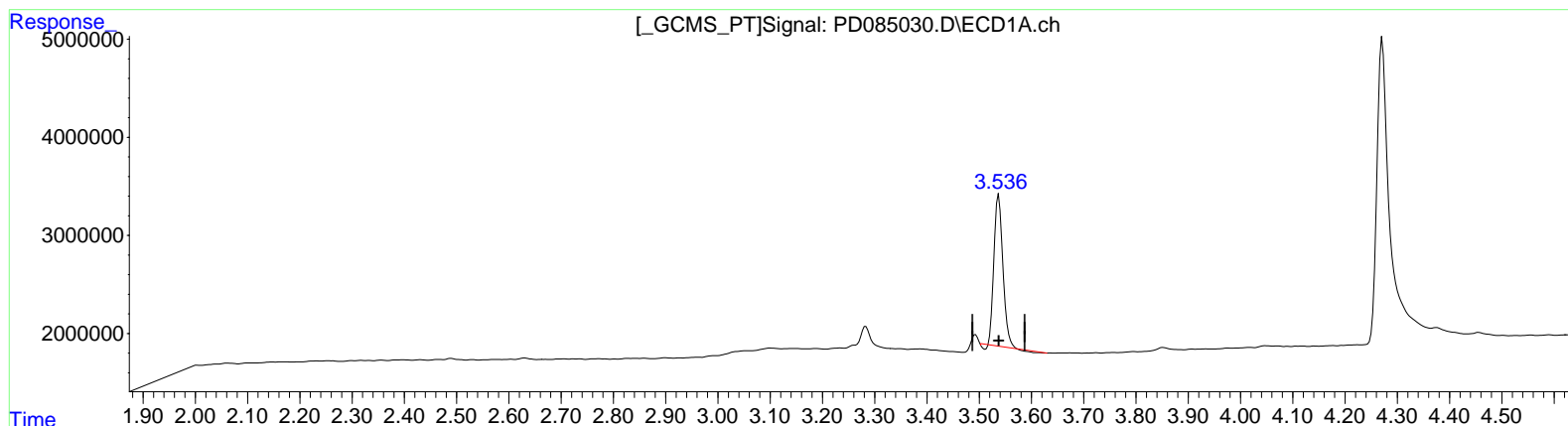
Instrument :
 ECD_D
 LabSampleID :
 PIBLK114

Manual Integrations APPROVED

Reviewed By : Abdul Mirza 09/15/2024
 Supervised By : Ankita Jodhani 09/16/2024

Integration File signal 1: autoint1.e
 Integration File signal 2: autoint2.e
 Quant Time: Sep 13 01:43:44 2024
 Quant Method : Z:\pestpcbsrv\HPCHEM1\ECD_D\Method\PD082524CLP.M
 Quant Title : GC Extractables
 QLast Update : Tue Aug 27 02:47:48 2024
 Response via : Initial Calibration
 Integrator: ChemStation

Volume Inj. : 1 µl
 Signal #1 Phase : ZB-MR1 Signal #2 Phase: ZB-MR2
 Signal #1 Info : 30M x 0.32mm x 0.5 Signal #2 Info : 30M x 0.32mm x 0.25µm



(1) Tetrachloro-m-xylene (SA)

3.537min 17.611 ng/ml

response 17811692

(1) Tetrachloro-m-xylene #2 (SA)

2.905min 22.291 ng/ml

response 78885338

Data Path : Z:\pestpcbsrv\HPCHEM1\ECD_D\Data\PD091224\
 Data File : PD085030.D
 Signal(s) : Signal #1: ECD1A.ch Signal #2: ECD2B.ch
 Acq On : 12 Sep 2024 10:31
 Operator : AR\AJ
 Sample : PIBLK114
 Misc :
 ALS Vial : 2 Sample Multiplier: 1

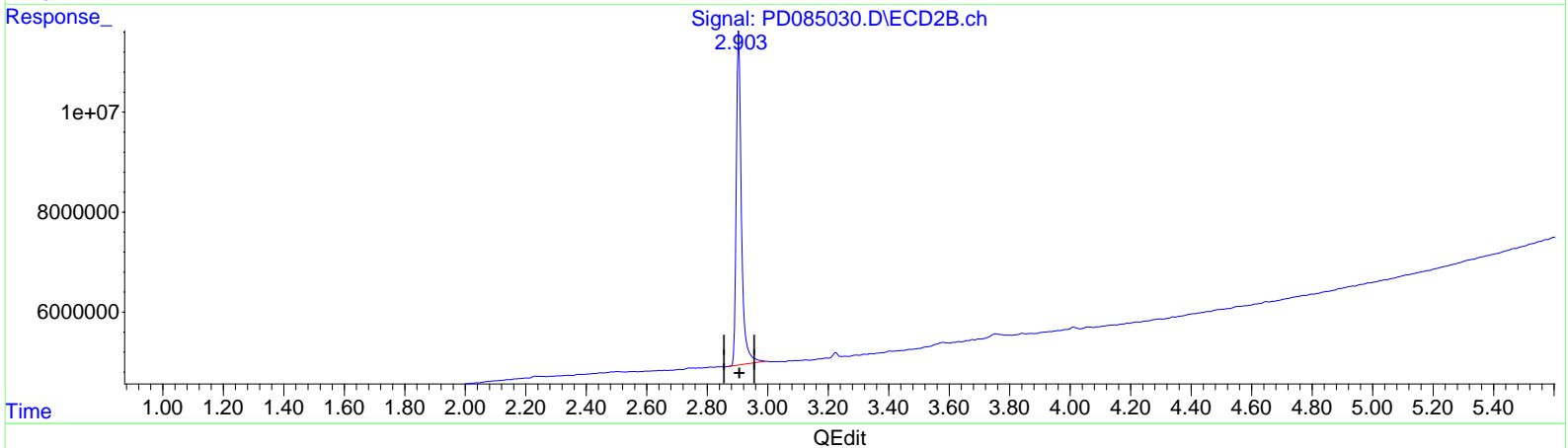
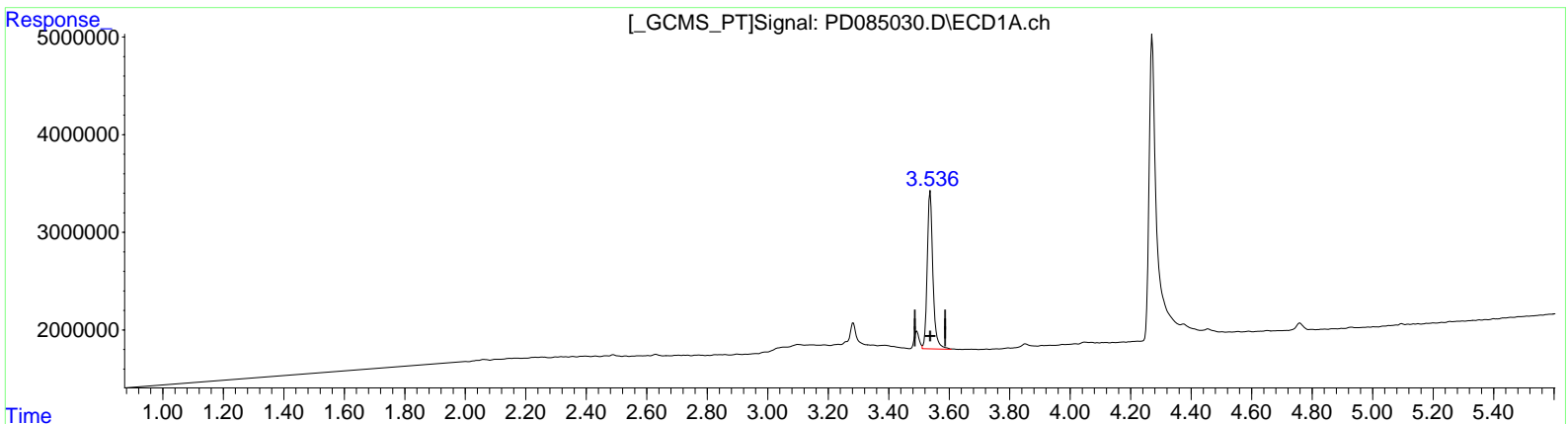
Instrument :
 ECD_D
LabSampleId :
 PIBLK114

Manual Integrations APPROVED

Reviewed By : Abdul Mirza 09/15/2024
 Supervised By : Ankita Jodhani 09/16/2024

Integration File signal 1: autoint1.e
 Integration File signal 2: autoint2.e
 Quant Time: Sep 13 01:43:44 2024
 Quant Method : Z:\pestpcbsrv\HPCHEM1\ECD_D\Method\PD082524CLP.M
 Quant Title : GC Extractables
 QLast Update : Tue Aug 27 02:47:48 2024
 Response via : Initial Calibration
 Integrator: ChemStation

Volume Inj. : 1 µl
 Signal #1 Phase : ZB-MR1 Signal #2 Phase: ZB-MR2
 Signal #1 Info : 30M x 0.32mm x 0.5 Signal #2 Info : 30M x 0.32mm x 0.25µm



(1) Tetrachloro-m-xylene (SA)
 3.536min 20.823 ng/ml m
 response 21060701

(1) Tetrachloro-m-xylene #2 (SA)
 2.905min 22.291 ng/ml
 response 78885338