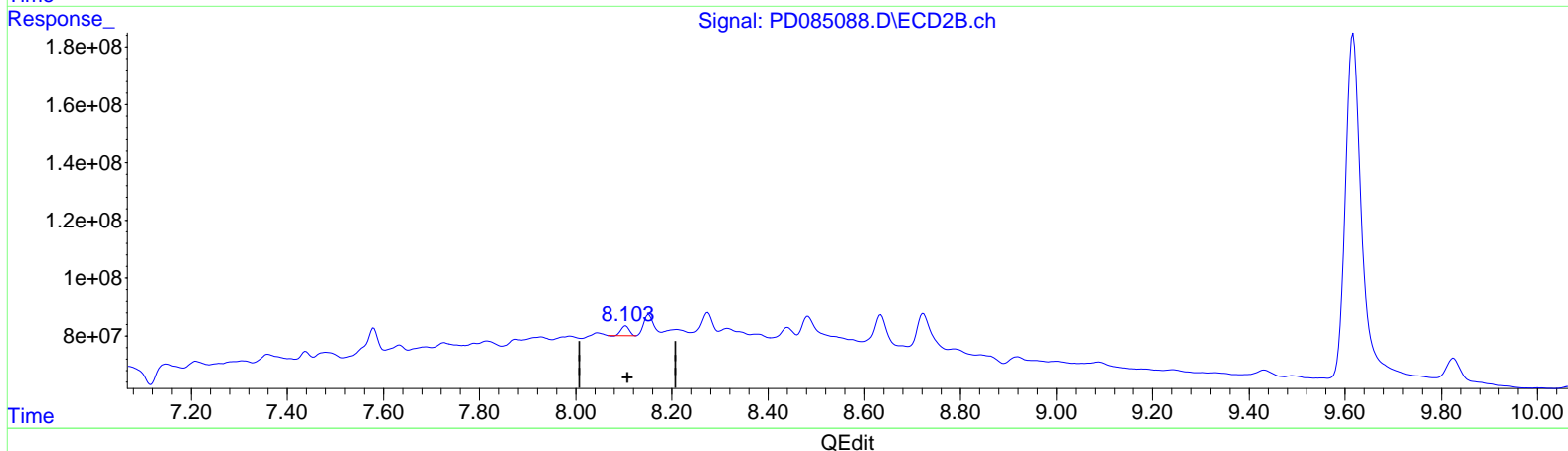
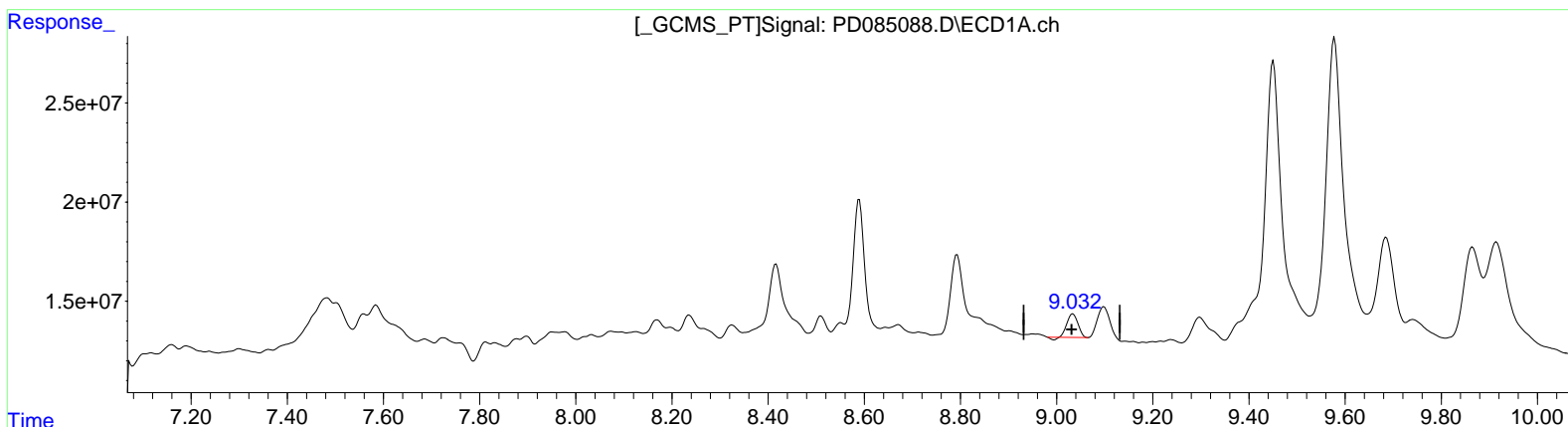


Data Path : Z:\pestpcbsrv\HPCHEM1\ECD_D\Data\PD091324\
 Data File : PD085088.D
 Signal(s) : Signal #1: ECD1A.ch Signal #2: ECD2B.ch
 Acq On : 13 Sep 2024 17:12
 Operator : AR\AJ
 Sample : P3877-19RE
 Misc :
 ALS Vial : 28 Sample Multiplier: 1

Integration File signal 1: autoint1.e
 Integration File signal 2: autoint2.e
 Quant Time: Sep 14 00:50:38 2024
 Quant Method : Z:\pestpcbsrv\HPCHEM1\ECD_D\Method\PD082524CLP.M
 Quant Title : GC Extractables
 QLast Update : Tue Aug 27 02:47:48 2024
 Response via : Initial Calibration
 Integrator: ChemStation

Volume Inj. : 1 µl
 Signal #1 Phase : ZB-MR1 Signal #2 Phase: ZB-MR2
 Signal #1 Info : 30M x 0.32mm x0.5 Signal #2 Info : 30M x 0.32mm x 0.25µm



(27) Decachlorobiphenyl (SA)

9.034min 13.957 ng/ml

response 18228371

(27) Decachlorobiphenyl #2 (SA)

8.104min 11.563 ng/ml

response 40207465