

Data Path : Z:\pestpcbsrv\HPCHEM1\ECD_D\Data\PD091324\
 Data File : PD085065.D
 Signal(s) : Signal #1: ECD1A.ch Signal #2: ECD2B.ch
 Acq On : 13 Sep 2024 10:53
 Operator : AR\AJ
 Sample : PEM204
 Misc :
 ALS Vial : 3 Sample Multiplier: 1

Integration File signal 1: autoint1.e
 Integration File signal 2: autoint2.e
 Quant Time: Sep 14 00:44:03 2024
 Quant Method : Z:\pestpcbsrv\HPCHEM1\ECD_D\Method\PD082524CLP.M
 Quant Title : GC Extractables
 QLast Update : Tue Aug 27 02:47:48 2024
 Response via : Initial Calibration
 Integrator: ChemStation

Volume Inj. : 1 µl
 Signal #1 Phase : ZB-MR1 Signal #2 Phase: ZB-MR2
 Signal #1 Info : 30M x 0.32mm x0.5 Signal #2 Info : 30M x 0.32mm x 0.25µm

Compound	RT#1	RT#2	Resp#1	Resp#2	ng/ml	ng/ml

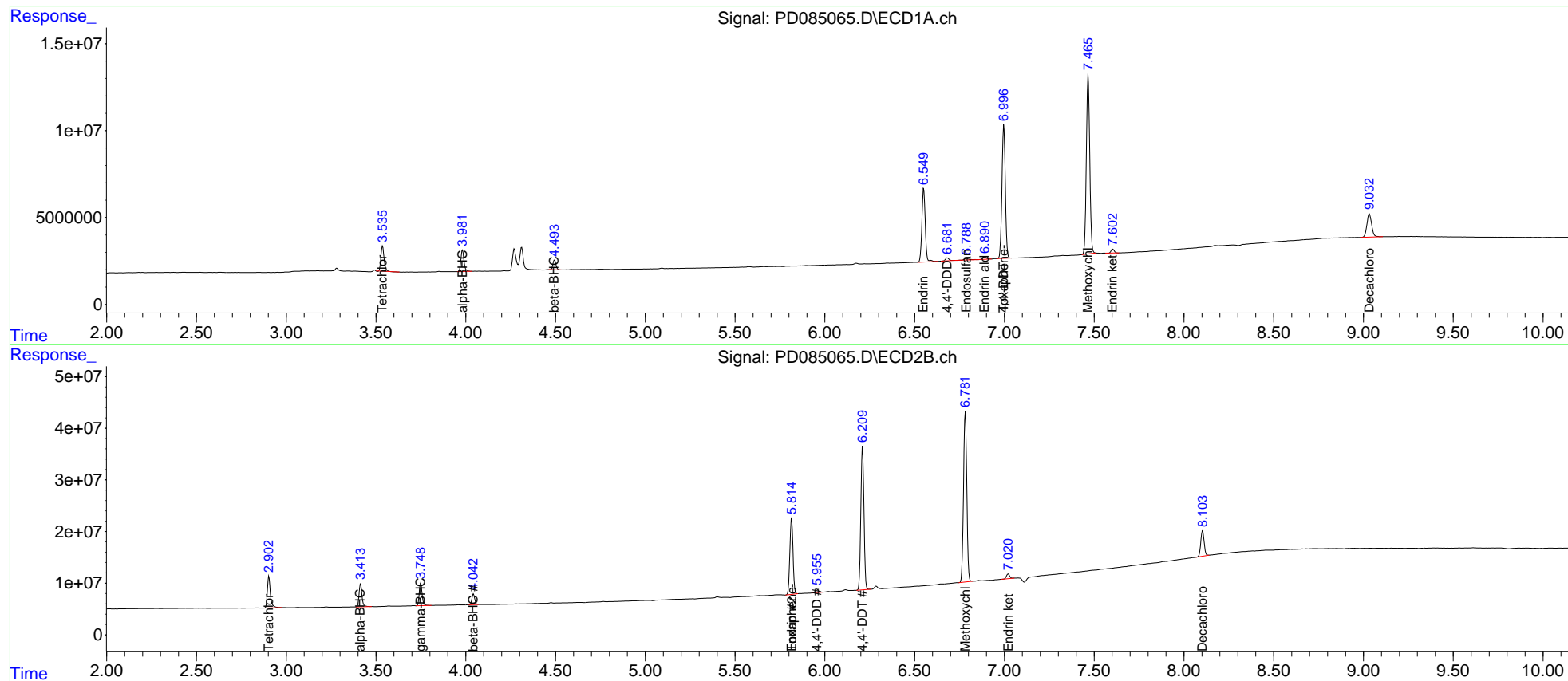
System Monitoring Compounds						
1) SA Tetrachlo...	3.537	2.904	17473052	71707021	17.276	20.263
27) SA Decachlor...	9.033	8.104	24886633	64176291	19.055	18.456
Target Compounds						
2) A alpha-BHC	3.982	3.415	14990198	50952437	8.817	10.049
6) B beta-BHC	4.495	4.043	6656620	22115061	9.164	10.201
14) MA Endrin	6.551	5.815	55171868	179.9E6	48.896	48.579
15) B Endosulfa...	6.789	0.000	1804265	0	1.367	N.D. #
16) A 4,4'-DDD	6.682	5.956	2489471	8400249	2.521	2.475
17) MA 4,4'-DDT	6.997	6.210	100.4E6	334.5E6	112.183	104.577
18) B Endrin al...	6.891	0.000	1984659	0	2.198	N.D. #
20) A Methoxychlor	7.467	6.783	134.7E6	420.0E6	258.617	253.887
21) B Endrin ke...	7.604	7.022	2594191	11557550	2.122	2.625
24) Toxaphene-3	6.997	5.815f	100.4E6	179.9E6	2930.923	7622.128 #

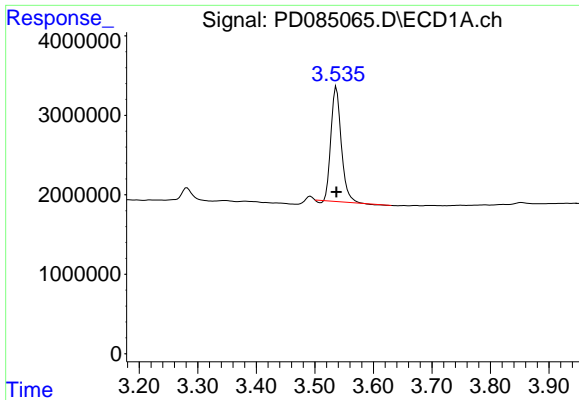
(f)=RT Delta > 1/2 Window (#)=Amounts differ by > 25% (m)=manual int.

Data Path : Z:\pestpcbsrv\HPCHEM1\ECD_D\Data\PD091324\
 Data File : PD085065.D
 Signal(s) : Signal #1: ECD1A.ch Signal #2: ECD2B.ch
 Acq On : 13 Sep 2024 10:53
 Operator : AR\AJ
 Sample : PEM204
 Misc :
 ALS Vial : 3 Sample Multiplier: 1

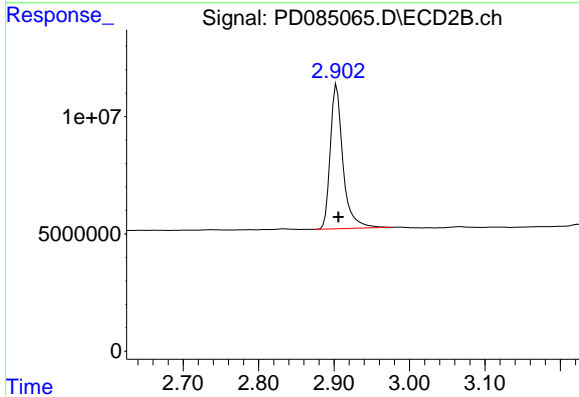
Integration File signal 1: autoint1.e
 Integration File signal 2: autoint2.e
 Quant Time: Sep 14 00:44:03 2024
 Quant Method : Z:\pestpcbsrv\HPCHEM1\ECD_D\Method\PD082524CLP.M
 Quant Title : GC Extractables
 QLast Update : Tue Aug 27 02:47:48 2024
 Response via : Initial Calibration
 Integrator: ChemStation

Volume Inj. : 1 µl
 Signal #1 Phase : ZB-MR1 Signal #2 Phase: ZB-MR2
 Signal #1 Info : 30M x 0.32mm x0.5 Signal #2 Info : 30M x 0.32mm x 0.25µm

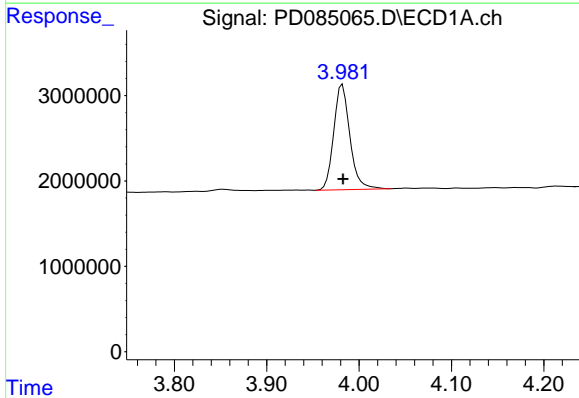




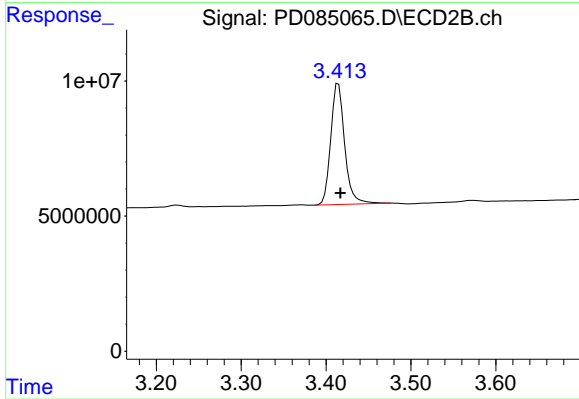
#1 Tetrachloro-m-xylene
R.T.: 3.537 min
Delta R.T.: 0.000 min
Response: 17473052
Conc: 17.28 ng/ml



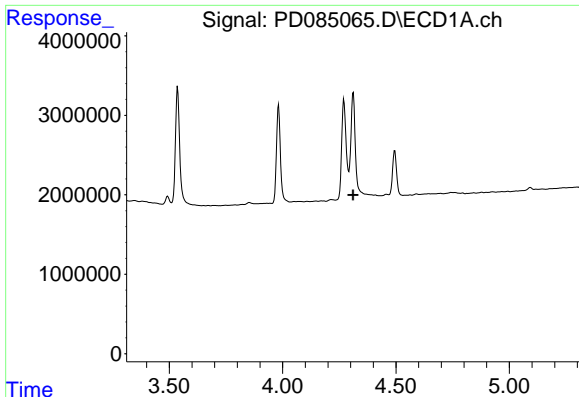
#1 Tetrachloro-m-xylene
R.T.: 2.904 min
Delta R.T.: -0.002 min
Response: 71707021
Conc: 20.26 ng/ml



#2 alpha-BHC
R.T.: 3.982 min
Delta R.T.: 0.000 min
Response: 14990198
Conc: 8.82 ng/ml

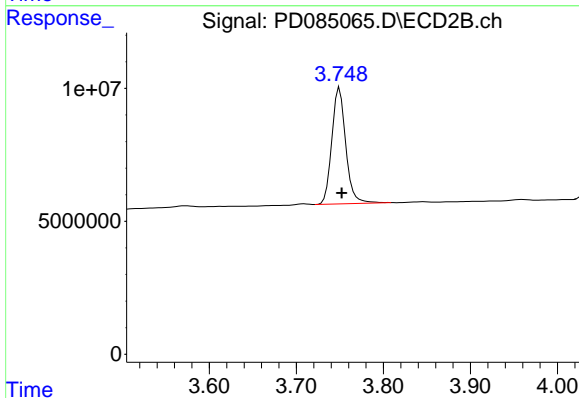


#2 alpha-BHC
R.T.: 3.415 min
Delta R.T.: -0.003 min
Response: 50952437
Conc: 10.05 ng/ml



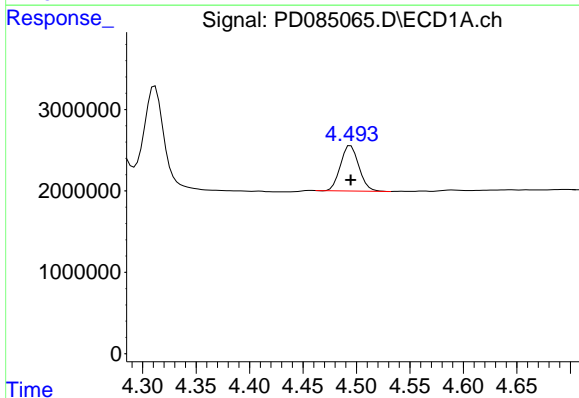
#3 gamma-BHC (Lindane)

R.T.: 4.312 min
Delta R.T.: 0.000 min
Response: -26485439
Conc: N.D.



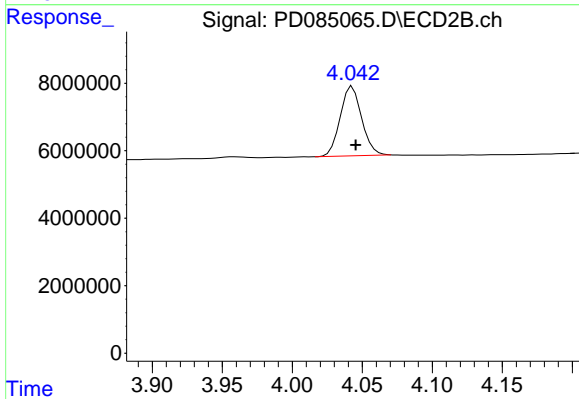
#3 gamma-BHC (Lindane)

R.T.: 3.750 min
Delta R.T.: -0.002 min
Response: 48749291
Conc: 10.06 ng/ml



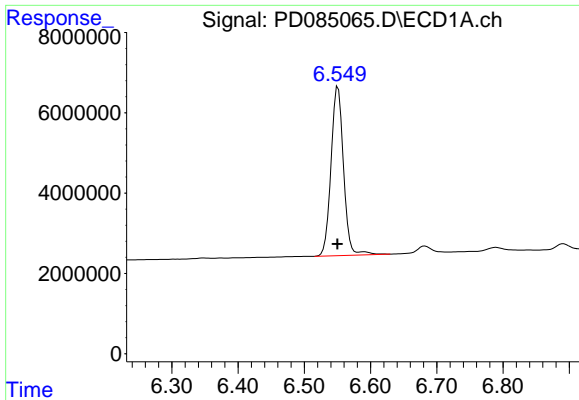
#6 beta-BHC

R.T.: 4.495 min
Delta R.T.: 0.000 min
Response: 6656620
Conc: 9.16 ng/ml

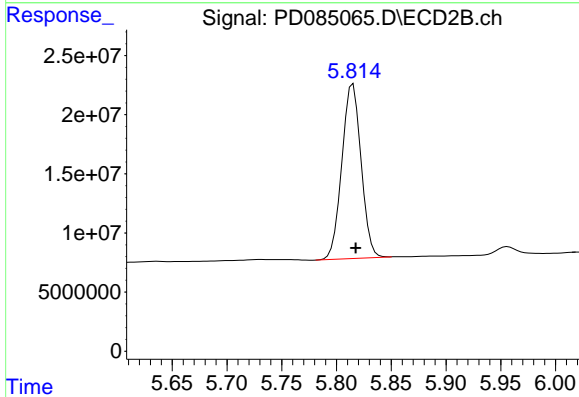


#6 beta-BHC

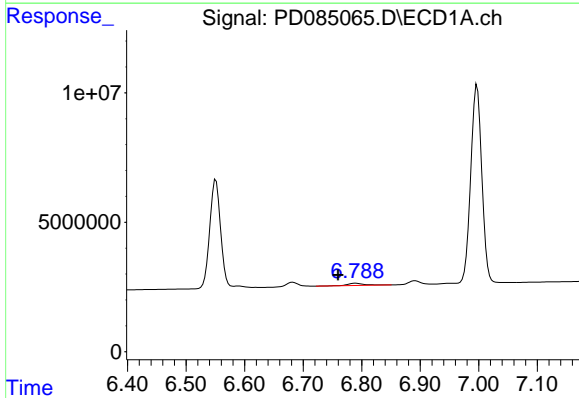
R.T.: 4.043 min
Delta R.T.: -0.002 min
Response: 22115061
Conc: 10.20 ng/ml



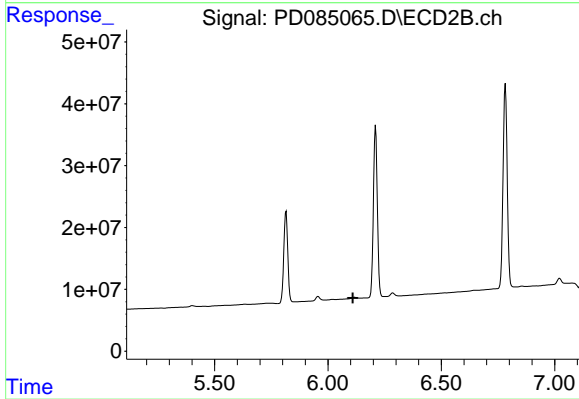
#14 Endrin
 R.T.: 6.551 min
 Delta R.T.: 0.000 min
 Response: 55171868
 Conc: 48.90 ng/ml



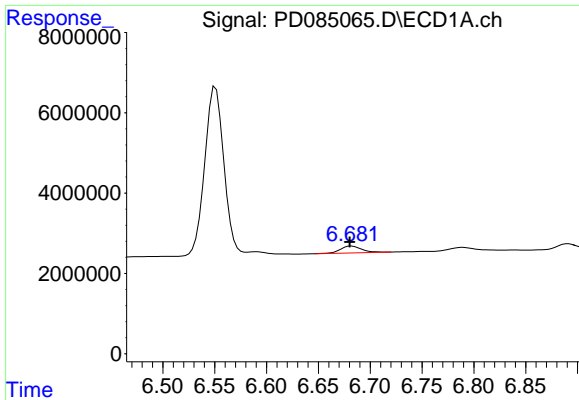
#14 Endrin
 R.T.: 5.815 min
 Delta R.T.: -0.002 min
 Response: 179854529
 Conc: 48.58 ng/ml



#15 Endosulfan II
 R.T.: 6.789 min
 Delta R.T.: 0.030 min
 Response: 1804265
 Conc: 1.37 ng/ml

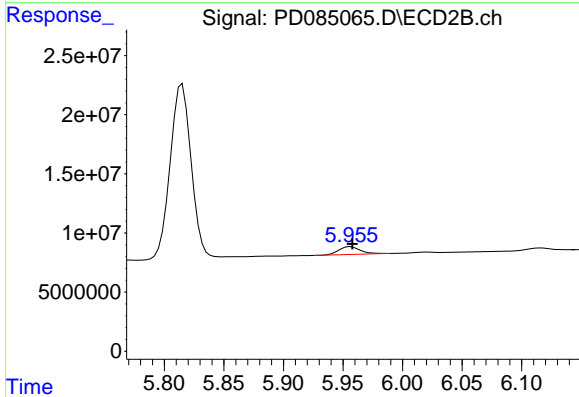


#15 Endosulfan II
 R.T.: 0.000 min
 Exp R.T.: 6.110 min
 Response: 0
 Conc: N.D.



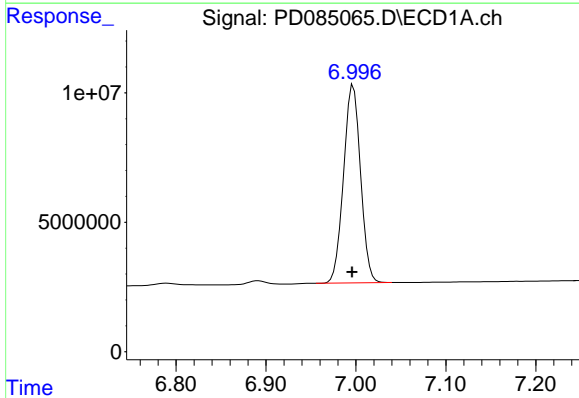
#16 4,4'-DDD

R.T.: 6.682 min
Delta R.T.: 0.002 min
Response: 2489471
Conc: 2.52 ng/ml



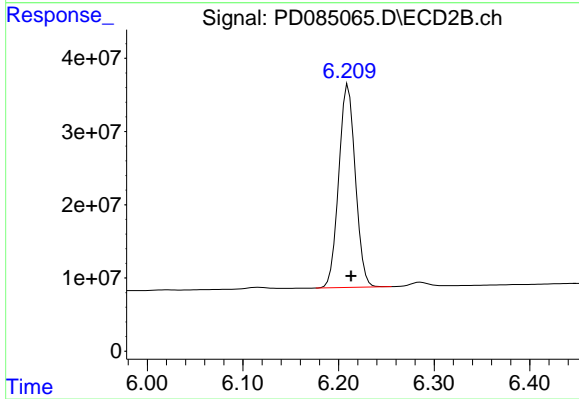
#16 4,4'-DDD

R.T.: 5.956 min
Delta R.T.: -0.001 min
Response: 8400249
Conc: 2.48 ng/ml



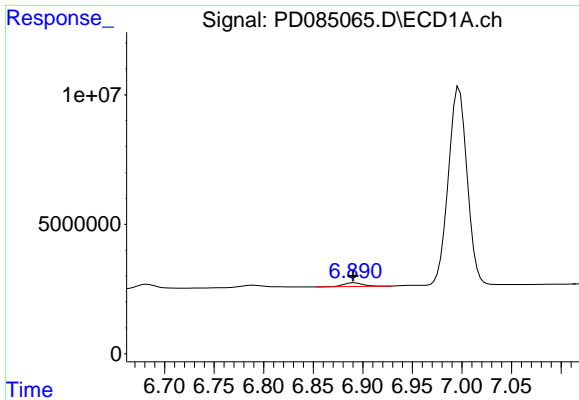
#17 4,4'-DDT

R.T.: 6.997 min
Delta R.T.: 0.001 min
Response: 100417949
Conc: 112.18 ng/ml

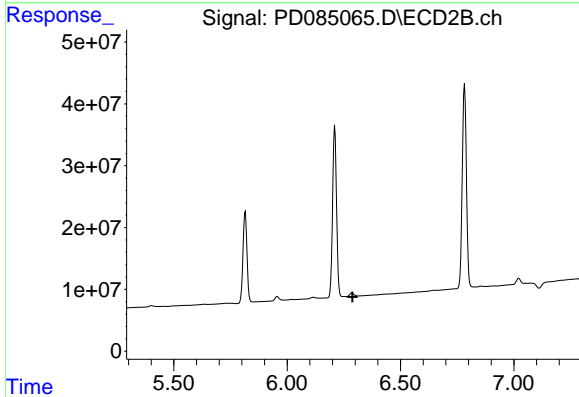


#17 4,4'-DDT

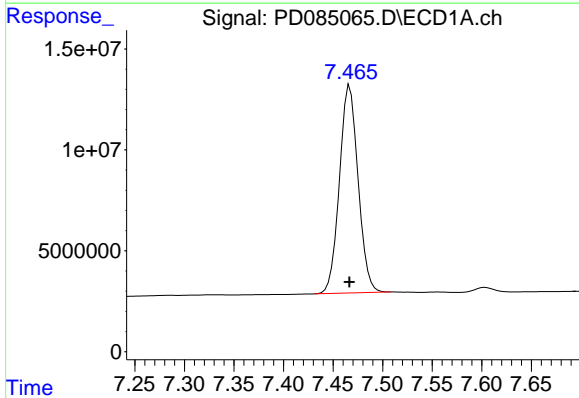
R.T.: 6.210 min
Delta R.T.: -0.003 min
Response: 334534346
Conc: 104.58 ng/ml



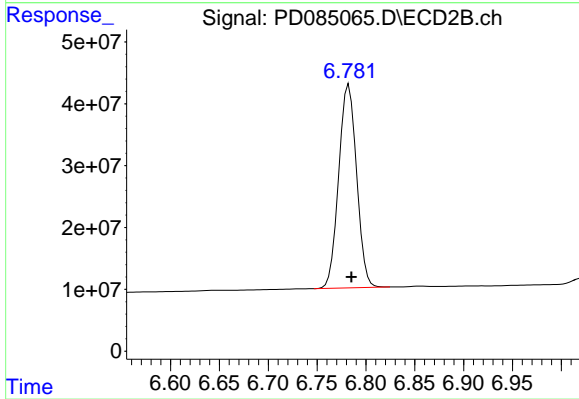
#18 Endrin aldehyde
 R.T.: 6.891 min
 Delta R.T.: 0.001 min
 Response: 1984659
 Conc: 2.20 ng/ml



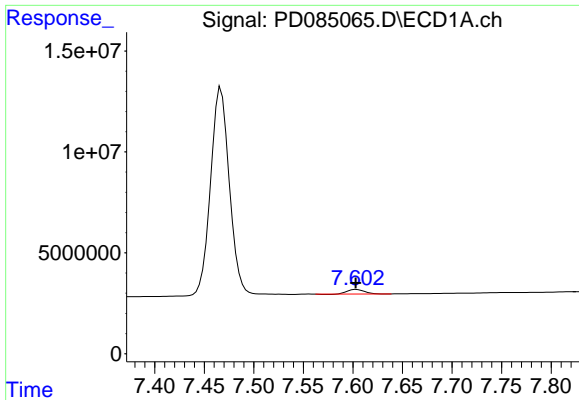
#18 Endrin aldehyde
 R.T.: 0.000 min
 Exp R.T. : 6.289 min
 Response: 0
 Conc: N.D.



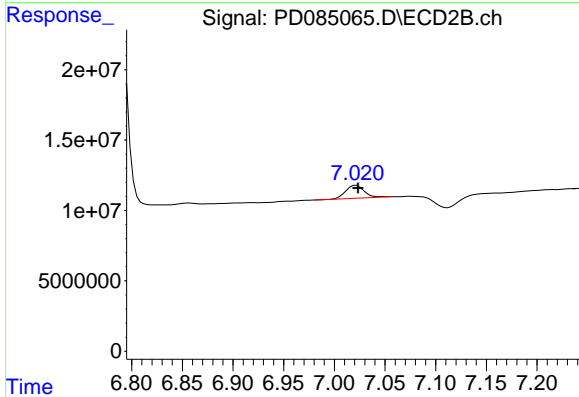
#20 Methoxychlor
 R.T.: 7.467 min
 Delta R.T.: 0.000 min
 Response: 134717561
 Conc: 258.62 ng/ml



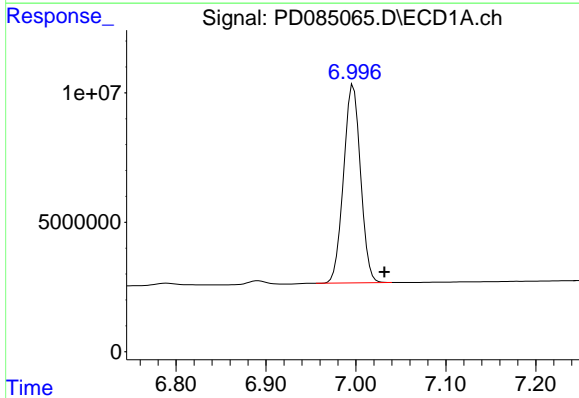
#20 Methoxychlor
 R.T.: 6.783 min
 Delta R.T.: -0.002 min
 Response: 419996985
 Conc: 253.89 ng/ml



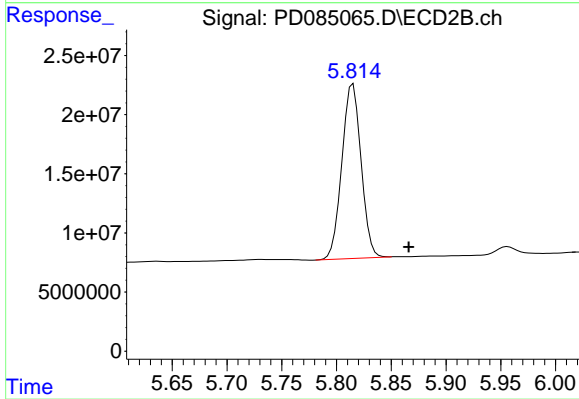
#21 Endrin ketone
 R.T.: 7.604 min
 Delta R.T.: 0.001 min
 Response: 2594191
 Conc: 2.12 ng/ml



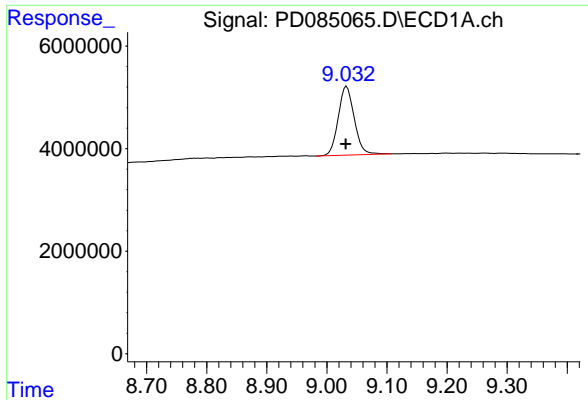
#21 Endrin ketone
 R.T.: 7.022 min
 Delta R.T.: -0.002 min
 Response: 11557550
 Conc: 2.62 ng/ml



#24 Toxaphene-3
 R.T.: 6.997 min
 Delta R.T.: -0.035 min
 Response: 100417949
 Conc: 2930.92 ng/ml



#24 Toxaphene-3
 R.T.: 5.815 min
 Delta R.T.: -0.051 min
 Response: 179854529
 Conc: 7622.13 ng/ml



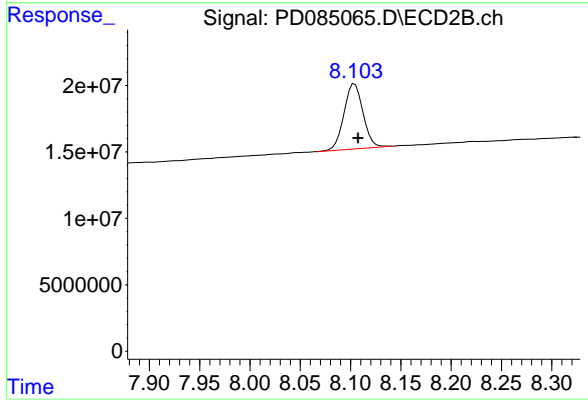
#27 Decachlorobiphenyl

R.T.: 9.033 min

Delta R.T.: 0.002 min

Response: 24886633

Conc: 19.06 ng/ml



#27 Decachlorobiphenyl

R.T.: 8.104 min

Delta R.T.: -0.003 min

Response: 64176291

Conc: 18.46 ng/ml