

Data Path : Z:\pestpcbsrv\HPCHEM1\ECD\_D\Data\PD091424\  
 Data File : PD085158.D  
 Signal(s) : Signal #1: ECD1A.ch Signal #2: ECD2B.ch  
 Acq On : 14 Sep 2024 23:37  
 Operator : AR\AJ  
 Sample : INDB322  
 Misc :  
 ALS Vial : 100 Sample Multiplier: 1

**Instrument :**  
 ECD\_D  
**ClientSampleId :**  
 INDB3207

**Manual Integrations**  
**APPROVED**  
 Reviewed By :Abdul Mirza 09/16/2024  
 Supervised By :Ankita Jodhani 09/17/2024

Integration File signal 1: autoint1.e  
 Integration File signal 2: autoint2.e  
 Quant Time: Sep 16 03:15:27 2024  
 Quant Method : Z:\pestpcbsrv\HPCHEM1\ECD\_D\Method\PD082524CLP.M  
 Quant Title : GC Extractables  
 QLast Update : Tue Aug 27 02:47:48 2024  
 Response via : Initial Calibration  
 Integrator: ChemStation

Volume Inj. : 1 µl  
 Signal #1 Phase : ZB-MR1 Signal #2 Phase: ZB-MR2  
 Signal #1 Info : 30M x 0.32mm x0.5 Signal #2 Info : 30M x 0.32mm x 0.25µm

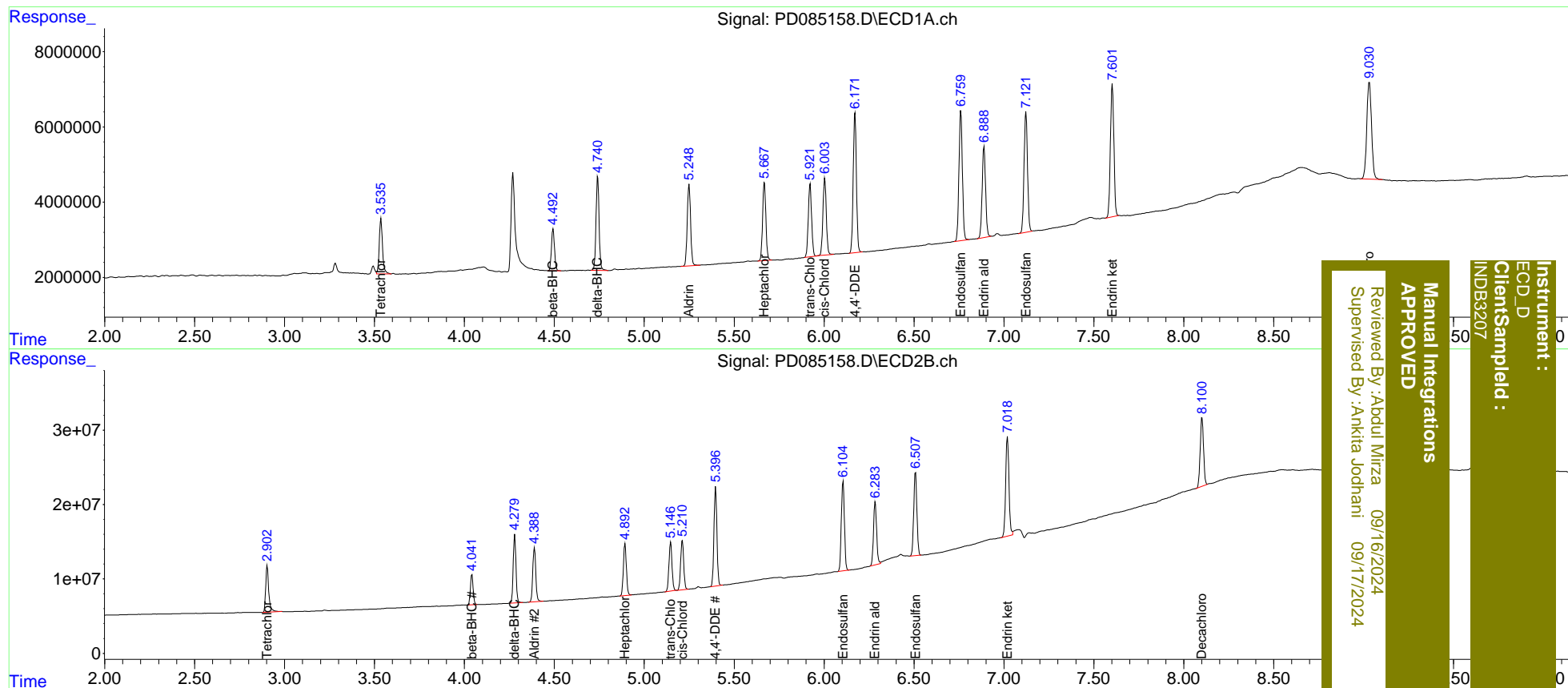
Compound	RT#1	RT#2	Resp#1	Resp#2	ng/ml	ng/ml
-----						
System Monitoring Compounds						
1) SA Tetrachlo...	3.536	2.904	18721493	74812782	18.510	21.141
27) SA Decachlor...	9.032	8.102	47330906	118.9E6	36.240	34.185
Target Compounds						
5) MB Aldrin	5.250	4.390	28269963	85696019	17.676	19.295
6) B beta-BHC	4.493	4.042	13211927	43784618	18.189	20.196
7) B delta-BHC	4.741	4.280	29783675	98562997	18.161	19.855
8) B Heptachlo...	5.668	4.893	26586508	80947654	17.826	19.113
10) B trans-Chl...	5.922	5.146	24873745	77384429	17.636	18.814m
11) B cis-Chlor...	6.003	5.212	26680379	78887414	18.045m	18.802
12) B 4,4'-DDE	6.172	5.397	45950043	152.2E6	36.835	38.793
15) B Endosulfa...	6.760	6.106	45702940	142.7E6	34.623	38.475
18) B Endrin al...	6.889	6.284	32153139	101.7E6	35.603	35.605
19) B Endosulfa...	7.123	6.508	42688174	136.0E6	37.055	38.072
21) B Endrin ke...	7.603	7.020	46935447	168.2E6	38.389	38.204

(f)=RT Delta > 1/2 Window (#)=Amounts differ by > 25% (m)=manual int.

Data Path : Z:\pestpcbsrv\HPCHEM1\ECD\_D\Data\PD091424\  
 Data File : PD085158.D  
 Signal(s) : Signal #1: ECD1A.ch Signal #2: ECD2B.ch  
 Acq On : 14 Sep 2024 23:37  
 Operator : AR\AJ  
 Sample : INDB322  
 Misc :  
 ALS Vial : 100 Sample Multiplier: 1

Integration File signal 1: autoint1.e  
 Integration File signal 2: autoint2.e  
 Quant Time: Sep 16 03:15:27 2024  
 Quant Method : Z:\pestpcbsrv\HPCHEM1\ECD\_D\Method\PD082524CLP.M  
 Quant Title : GC Extractables  
 QLast Update : Tue Aug 27 02:47:48 2024  
 Response via : Initial Calibration  
 Integrator: ChemStation

Volume Inj. : 1 µl  
 Signal #1 Phase : ZB-MR1 Signal #2 Phase: ZB-MR2  
 Signal #1 Info : 30M x 0.32mm x 0.5 Signal #2 Info : 30M x 0.32mm x 0.25µm



Instrument : ECD\_D  
 Client Sampled : INDB3207  
 Manual Integrations APPROVED  
 Reviewed By : Abdul Mirza 09/16/2024  
 Supervised By : Ankita Jodhani 09/17/2024