

Data Path : Z:\pestpcbsrv\HPCHEM1\ECD_D\Data\PD091522\
 Data File : PD071883.D
 Signal(s) : Signal #1: ECD1A.ch Signal #2: ECD2B.ch
 Acq On : 14 Sep 2022 10:04
 Operator : AR\AJ
 Sample : PSTDCCC050
 Misc :
 ALS Vial : 4 Sample Multiplier: 1

Instrument :
 ECD_D
 ClientSampleId :
 PSTDCCC050

Manual Integrations
APPROVED

Reviewed By :Abdul Mirza 09/15/2022
 Supervised By :Ankita Jodhani 09/15/2022

Integration File signal 1: autoint1.e
 Integration File signal 2: autoint2.e
 Quant Time: Sep 14 23:44:25 2022
 Quant Method : Z:\pestpcbsrv\HPCHEM1\ECD_D\Method\PD091022.M
 Quant Title : GC Extractables
 QLast Update : Sat Sep 10 22:11:50 2022
 Response via : Initial Calibration
 Integrator: ChemStation

Volume Inj. : 2 µl
 Signal #1 Phase : ZB-MR2 Signal #2 Phase: ZB-MR1
 Signal #1 Info : 30M x 0.32mm x0.2 Signal #2 Info : 30M x 0.32mm x 0.50µm

Compound	RT#1	RT#2	Resp#1	Resp#2	ng/ml	ng/ml

System Monitoring Compounds						
1) SA Tetrachlo...	2.805	3.564	137.4E6	1702.7E6	56.200	59.338
28) SA Decachlor...	7.996	9.090	117.2E6	510.3E6	46.533	54.891
Target Compounds						
2) A alpha-BHC	3.314	4.030	221.7E6	2372.8E6	57.533	59.129
3) MA gamma-BHC...	3.647	4.365	202.6E6	1926.4E6	57.688	58.675
4) MA Heptachlor	3.992	4.943	207.8E6	1389.5E6	55.578m	57.506
5) MB Aldrin	4.276	5.285	206.6E6	1164.8E6	56.424m	57.460
6) B beta-BHC	3.945	4.572	85274231	760.2E6	56.283	57.521
7) B delta-BHC	4.179	4.820	210.3E6	1490.1E6	59.662	63.749
8) B Heptachlo...	4.784	5.717	186.4E6	997.4E6	57.001	64.680
9) A Endosulfan I	5.157	6.103	162.7E6	837.0E6	51.182	56.773m
10) B gamma-Chl...	5.037	5.970	191.0E6	923.0E6	56.673	57.442m
11) B alpha-Chl...	5.101	6.047	186.2E6	884.3E6	56.118	56.676m
12) B 4,4'-DDE	5.291	6.222	173.3E6	861.4E6	56.642	58.476
13) MA Dieldrin	5.424	6.382	182.8E6	899.7E6	54.642	59.362
14) MA Endrin	5.701	6.614	151.4E6	639.9E6	51.112	50.664
15) B Endosulfa...	5.996	6.840	138.9E6	686.1E6	50.441	55.411
16) A 4,4'-DDD	5.849	6.746	141.2E6	703.1E6	55.685	59.158
17) MA 4,4'-DDT	6.103	7.057	138.3E6	675.7E6	52.563	54.696
18) B Endrin al...	6.177	6.971	113.7E6	547.6E6	51.394	56.716
19) B Endosulfa...	6.402	7.204	142.2E6	639.3E6	53.024	57.321
20) A Methoxychlor	6.681	7.534	75512795	331.0E6	50.431	54.448
21) B Endrin ke...	6.911	7.696	163.0E6	710.2E6	54.315	57.102
22) Mirex	7.097	8.157	118.1E6	463.5E6	50.122	53.523

(f)=RT Delta > 1/2 Window (#)=Amounts differ by > 25% (m)=manual int.

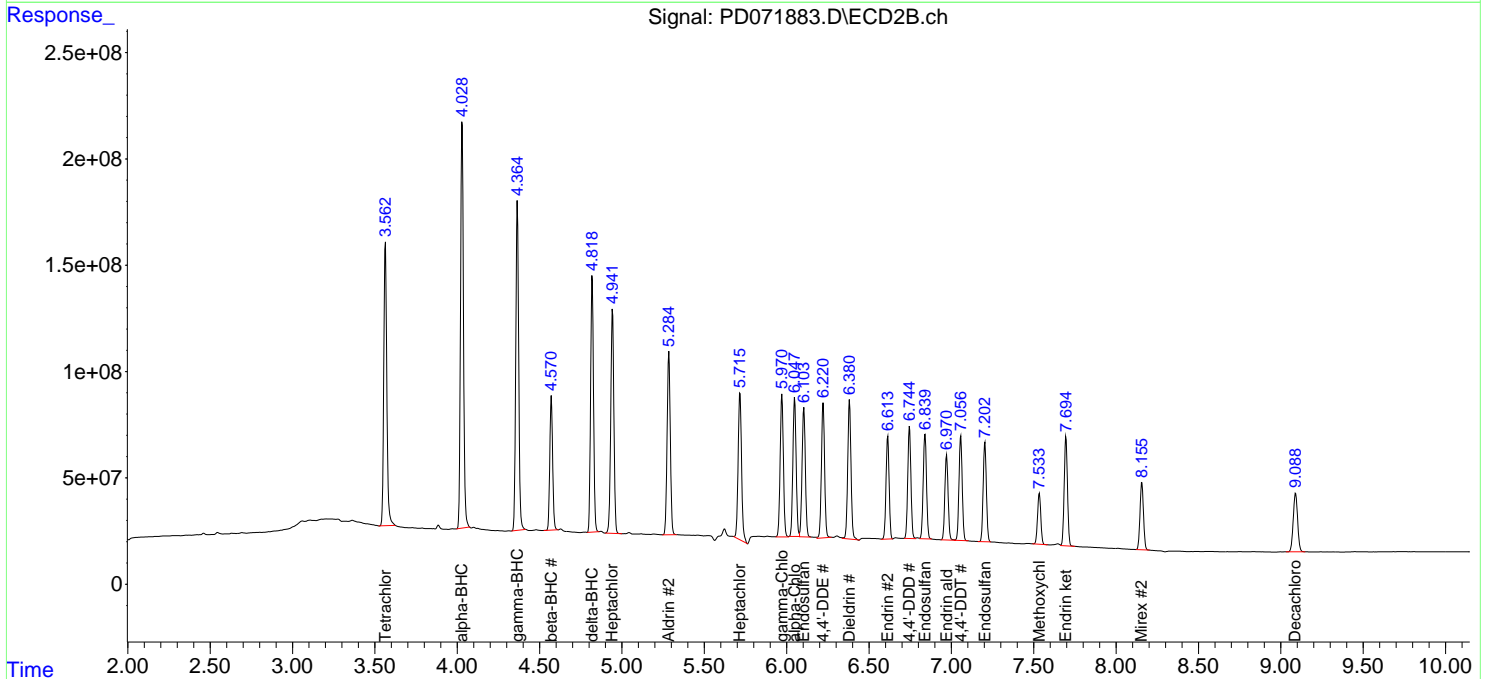
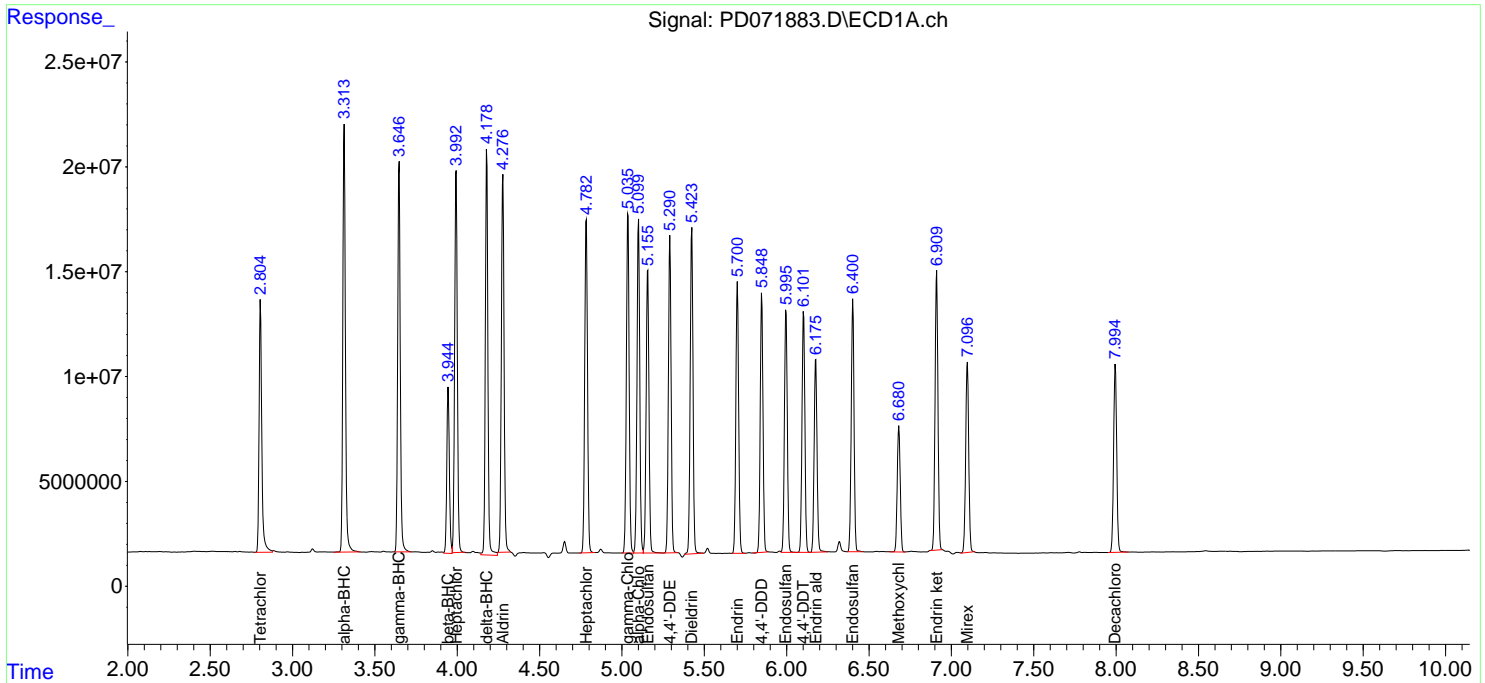
Data Path : Z:\pestpcbsrv\HPCHEM1\ECD_D\Data\PD091522\
 Data File : PD071883.D
 Signal(s) : Signal #1: ECD1A.ch Signal #2: ECD2B.ch
 Acq On : 14 Sep 2022 10:04
 Operator : AR\AJ
 Sample : PSTDCCC050
 Misc :
 ALS Vial : 4 Sample Multiplier: 1

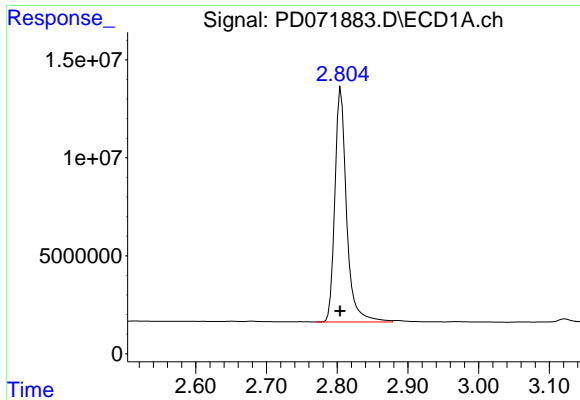
Instrument :
 ECD_D
ClientSampleId :
 PSTDCCC050

Manual Integrations
APPROVED
 Reviewed By :Abdul Mirza 09/15/2022
 Supervised By :Ankita Jodhani 09/15/2022

Integration File signal 1: autoint1.e
 Integration File signal 2: autoint2.e
 Quant Time: Sep 14 23:44:25 2022
 Quant Method : Z:\pestpcbsrv\HPCHEM1\ECD_D\Method\PD091022.M
 Quant Title : GC Extractables
 QLast Update : Sat Sep 10 22:11:50 2022
 Response via : Initial Calibration
 Integrator: ChemStation

Volume Inj. : 2 µl
 Signal #1 Phase : ZB-MR2 Signal #2 Phase: ZB-MR1
 Signal #1 Info : 30M x 0.32mm x0.2 Signal #2 Info : 30M x 0.32mm x 0.50µm





#1 Tetrachloro-m-xylene

R.T.: 2.805 min
 Delta R.T.: 0.001 min
 Response: 137424502
 Conc: 56.20 ng/ml

Instrument :

ECD_D

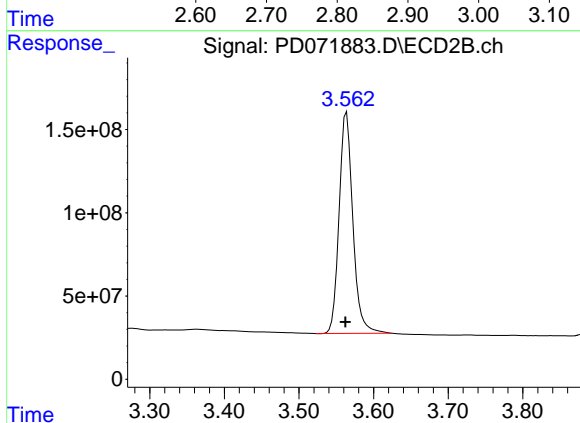
ClientSampleId :

PSTDCCC050

Manual Integrations

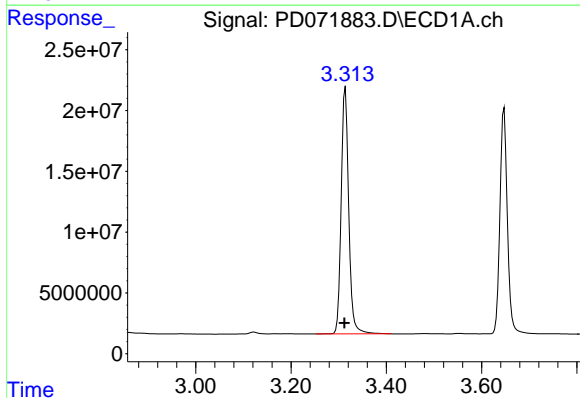
APPROVED

Reviewed By :Abdul Mirza 09/15/2022
 Supervised By :Ankita Jodhani 09/15/2022



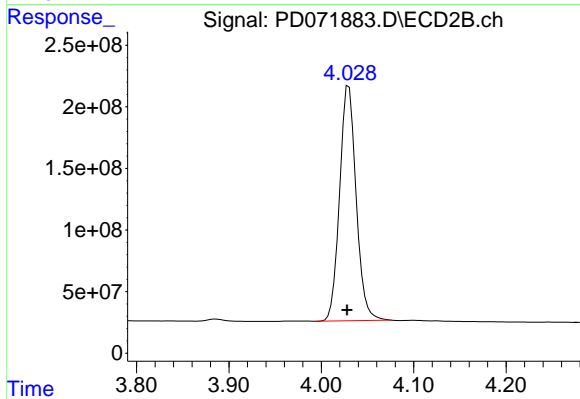
#1 Tetrachloro-m-xylene

R.T.: 3.564 min
 Delta R.T.: 0.002 min
 Response: 1702730168
 Conc: 59.34 ng/ml



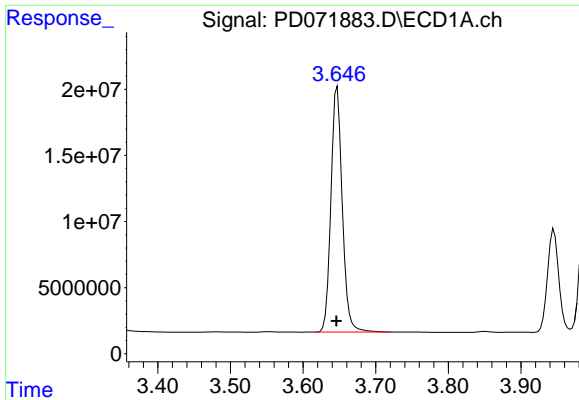
#2 alpha-BHC

R.T.: 3.314 min
 Delta R.T.: 0.002 min
 Response: 221720407
 Conc: 57.53 ng/ml



#2 alpha-BHC

R.T.: 4.030 min
 Delta R.T.: 0.002 min
 Response: 2372797403
 Conc: 59.13 ng/ml

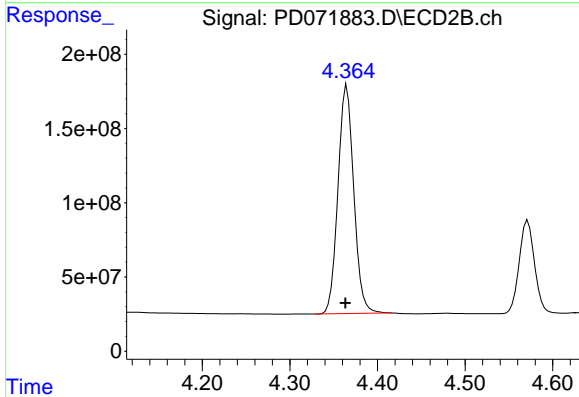


#3 gamma-BHC (Lindane)
 R.T.: 3.647 min
 Delta R.T.: 0.002 min
 Response: 202550281
 Conc: 57.69 ng/ml

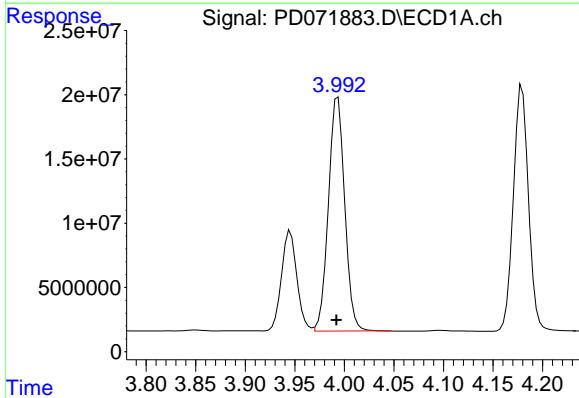
Instrument :
 ECD_D
 ClientSampleId :
 PSTDCCC050

Manual Integrations
APPROVED

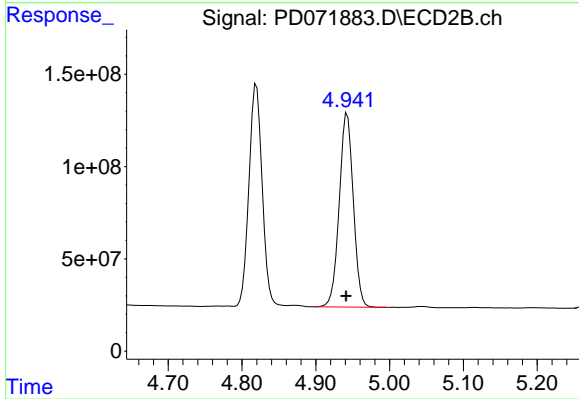
Reviewed By :Abdul Mirza 09/15/2022
 Supervised By :Ankita Jodhani 09/15/2022



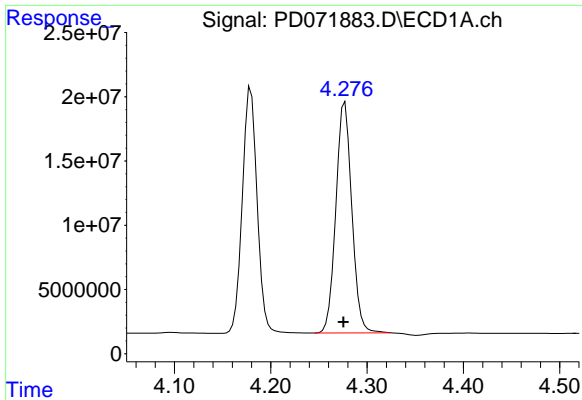
#3 gamma-BHC (Lindane)
 R.T.: 4.365 min
 Delta R.T.: 0.002 min
 Response: 1926440152
 Conc: 58.67 ng/ml



#4 Heptachlor
 R.T.: 3.992 min
 Delta R.T.: 0.000 min
 Response: 207788943
 Conc: 55.58 ng/ml m



#4 Heptachlor
 R.T.: 4.943 min
 Delta R.T.: 0.002 min
 Response: 1389464149
 Conc: 57.51 ng/ml

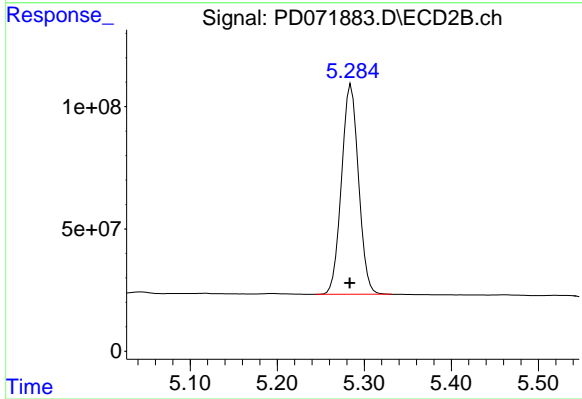


#5 Aldrin
 R.T.: 4.276 min
 Delta R.T.: 0.000 min
 Response: 206617008
 Conc: 56.42 ng/ml

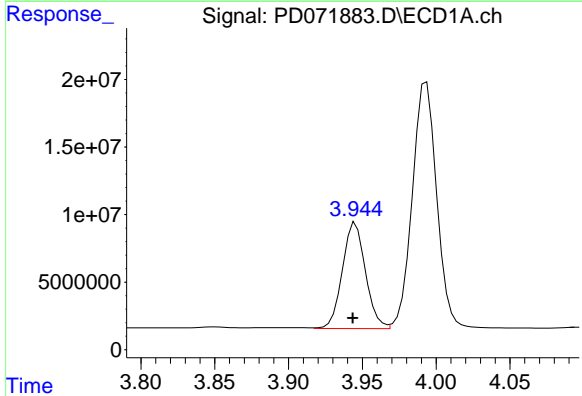
Instrument :
 ECD_D
 ClientSampleId :
 PSTDCCC050

Manual Integrations
 APPROVED

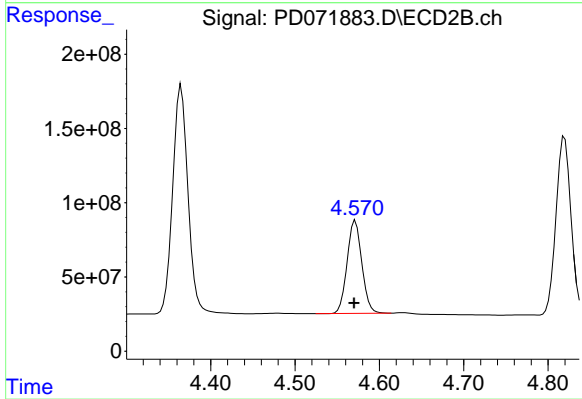
Reviewed By :Abdul Mirza 09/15/2022
 Supervised By :Ankita Jodhani 09/15/2022



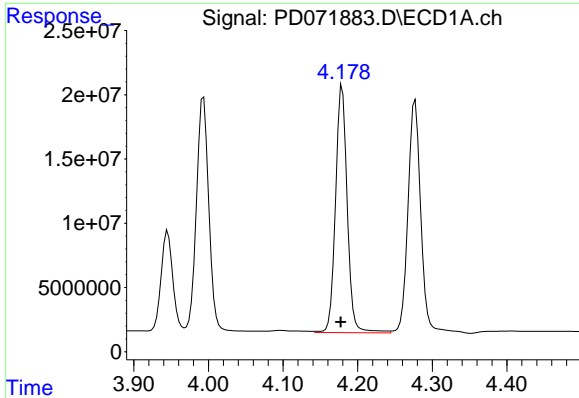
#5 Aldrin
 R.T.: 5.285 min
 Delta R.T.: 0.002 min
 Response: 1164831823
 Conc: 57.46 ng/ml



#6 beta-BHC
 R.T.: 3.945 min
 Delta R.T.: 0.002 min
 Response: 85274231
 Conc: 56.28 ng/ml



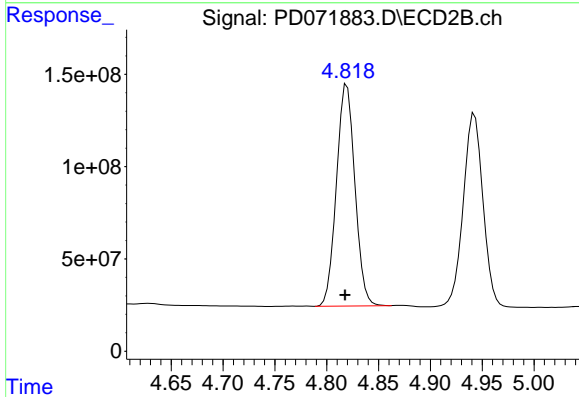
#6 beta-BHC
 R.T.: 4.572 min
 Delta R.T.: 0.002 min
 Response: 760243811
 Conc: 57.52 ng/ml



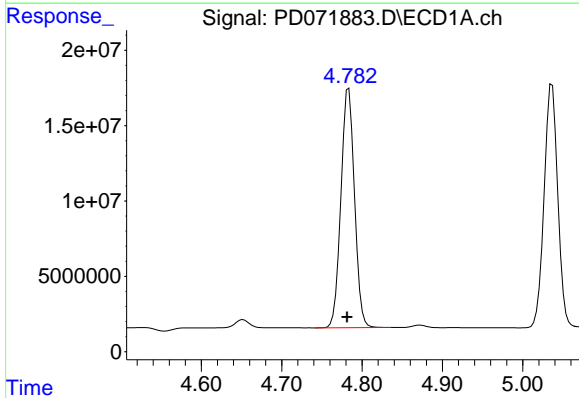
#7 delta-BHC
 R.T.: 4.179 min
 Delta R.T.: 0.002 min
 Response: 210255007
 Conc: 59.66 ng/ml

Instrument : ECD_D
 Client Sample Id : PSTDCCC050

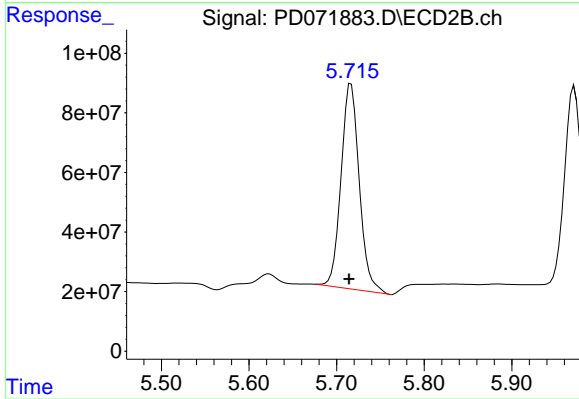
Manual Integrations
APPROVED
 Reviewed By :Abdul Mirza 09/15/2022
 Supervised By :Ankita Jodhani 09/15/2022



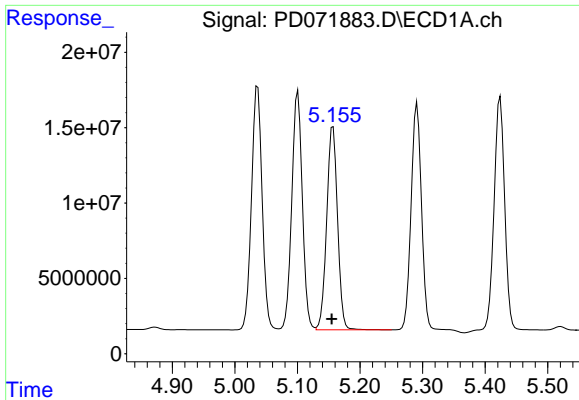
#7 delta-BHC
 R.T.: 4.820 min
 Delta R.T.: 0.002 min
 Response: 1490104820
 Conc: 63.75 ng/ml



#8 Heptachlor epoxide
 R.T.: 4.784 min
 Delta R.T.: 0.002 min
 Response: 186390853
 Conc: 57.00 ng/ml



#8 Heptachlor epoxide
 R.T.: 5.717 min
 Delta R.T.: 0.002 min
 Response: 997365240
 Conc: 64.68 ng/ml



#9 Endosulfan I

R.T.: 5.157 min
 Delta R.T.: 0.002 min
 Response: 162666987
 Conc: 51.18 ng/ml

Instrument :

ECD_D

ClientSampleId :

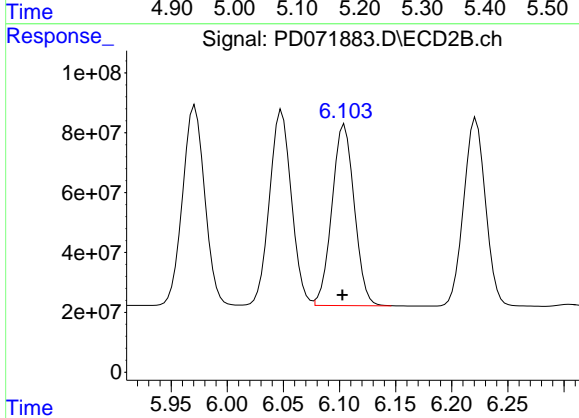
PSTDCCC050

Manual Integrations

APPROVED

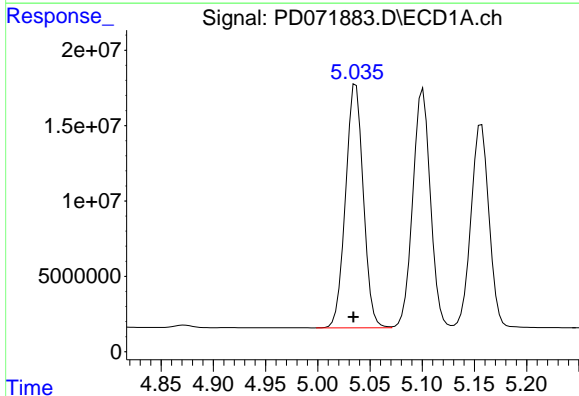
Reviewed By :Abdul Mirza 09/15/2022

Supervised By :Ankita Jodhani 09/15/2022



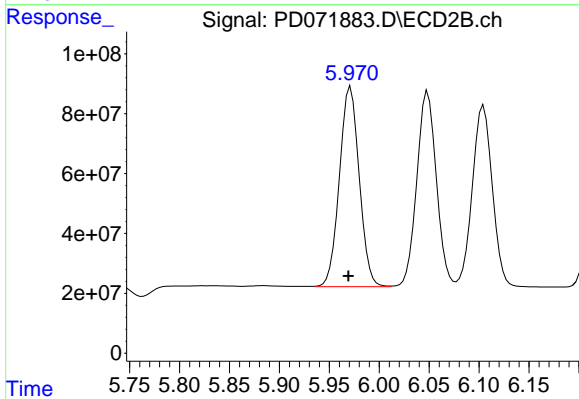
#9 Endosulfan I

R.T.: 6.103 min
 Delta R.T.: 0.000 min
 Response: 836957076
 Conc: 56.77 ng/ml m



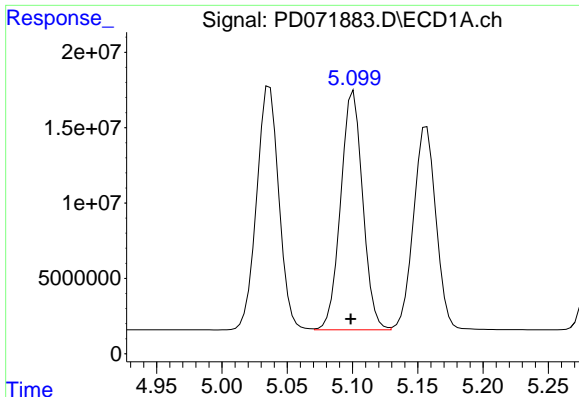
#10 gamma-Chlordane

R.T.: 5.037 min
 Delta R.T.: 0.002 min
 Response: 191044264
 Conc: 56.67 ng/ml



#10 gamma-Chlordane

R.T.: 5.970 min
 Delta R.T.: 0.000 min
 Response: 922958227
 Conc: 57.44 ng/ml m



#11 alpha-Chlordane

R.T.: 5.101 min
 Delta R.T.: 0.002 min
 Response: 186238988
 Conc: 56.12 ng/ml

Instrument :

ECD_D

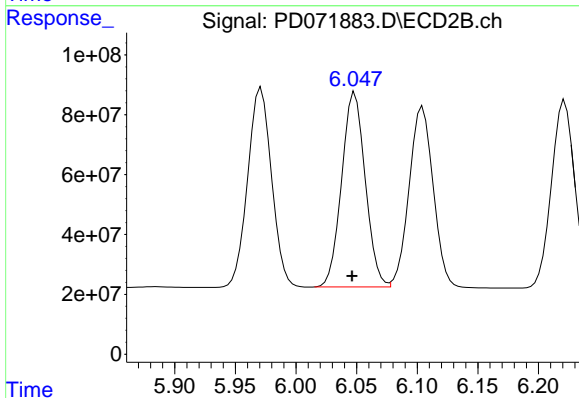
ClientSampleId :

PSTDCCC050

Manual Integrations

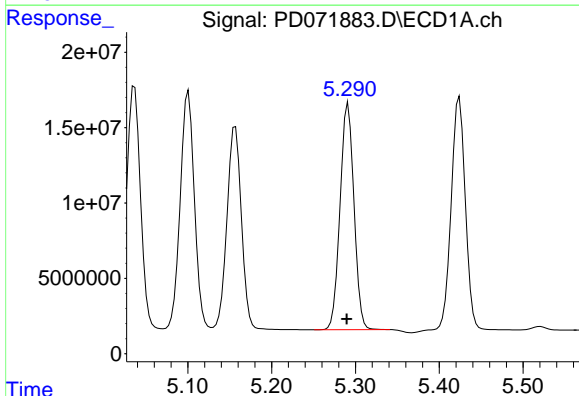
APPROVED

Reviewed By :Abdul Mirza 09/15/2022
 Supervised By :Ankita Jodhani 09/15/2022



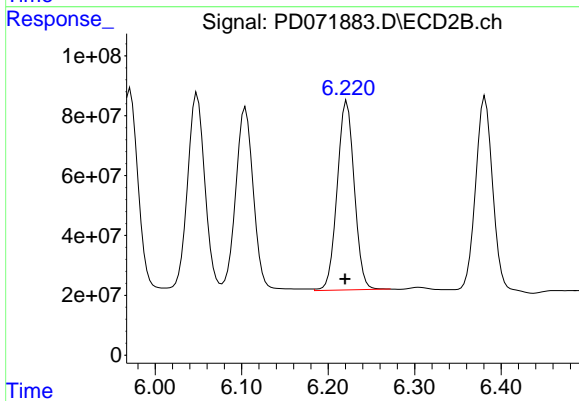
#11 alpha-Chlordane

R.T.: 6.047 min
 Delta R.T.: 0.000 min
 Response: 884294049
 Conc: 56.68 ng/ml m



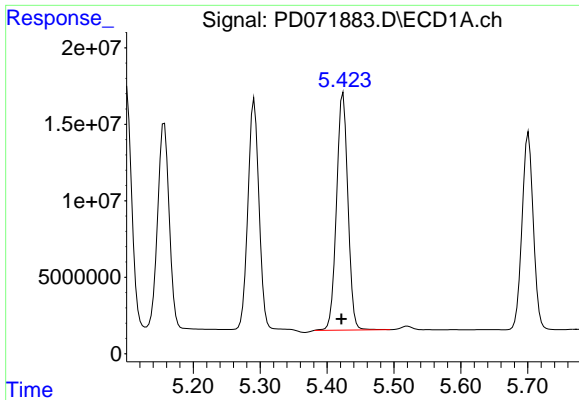
#12 4,4'-DDE

R.T.: 5.291 min
 Delta R.T.: 0.002 min
 Response: 173310498
 Conc: 56.64 ng/ml



#12 4,4'-DDE

R.T.: 6.222 min
 Delta R.T.: 0.002 min
 Response: 861423754
 Conc: 58.48 ng/ml



#13 Dieldrin

R.T.: 5.424 min
 Delta R.T.: 0.002 min
 Response: 182760318
 Conc: 54.64 ng/ml

Instrument :

ECD_D

ClientSampleId :

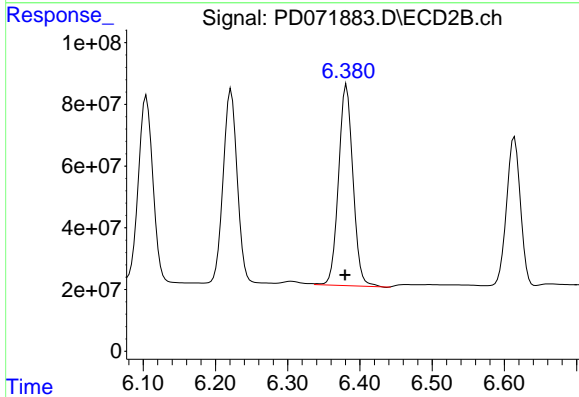
PSTDCCC050

Manual Integrations

APPROVED

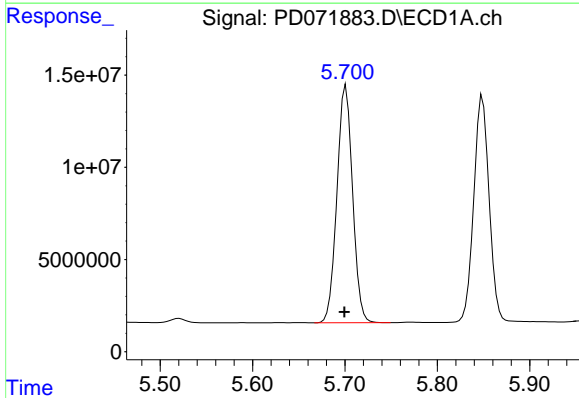
Reviewed By :Abdul Mirza 09/15/2022

Supervised By :Ankita Jodhani 09/15/2022



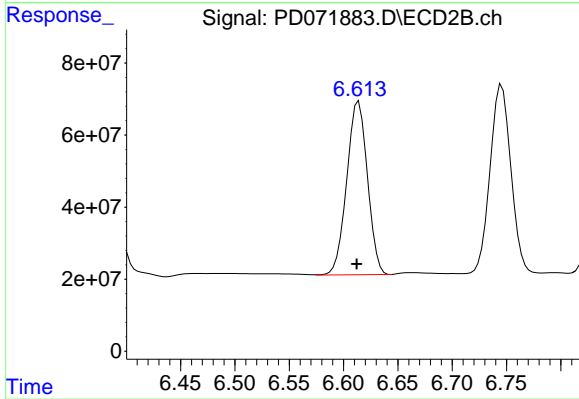
#13 Dieldrin

R.T.: 6.382 min
 Delta R.T.: 0.002 min
 Response: 899747145
 Conc: 59.36 ng/ml



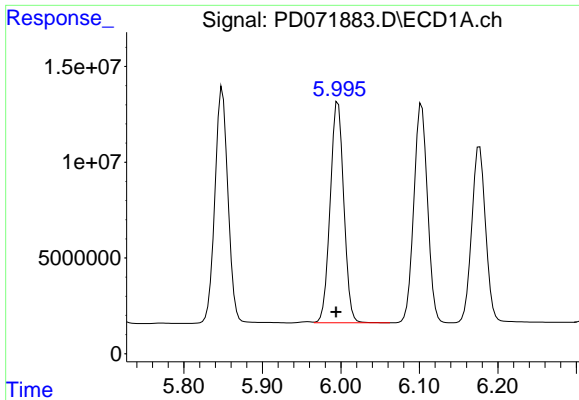
#14 Endrin

R.T.: 5.701 min
 Delta R.T.: 0.002 min
 Response: 151435799
 Conc: 51.11 ng/ml



#14 Endrin

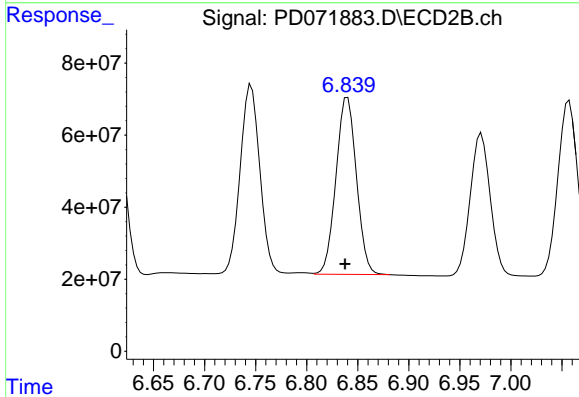
R.T.: 6.614 min
 Delta R.T.: 0.002 min
 Response: 639910412
 Conc: 50.66 ng/ml



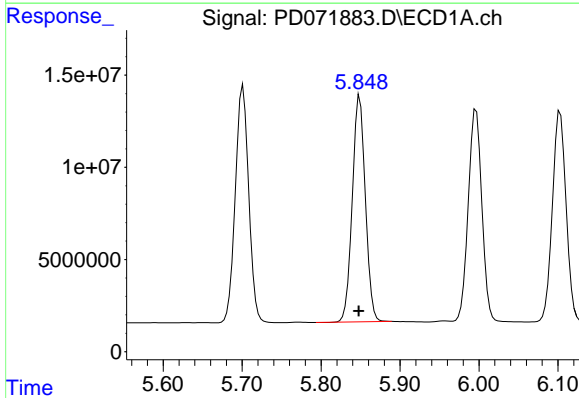
#15 Endosulfan II
 R.T.: 5.996 min
 Delta R.T.: 0.002 min
 Response: 138943729
 Conc: 50.44 ng/ml

Instrument : ECD_D
 ClientSampleId : PSTDCCC050

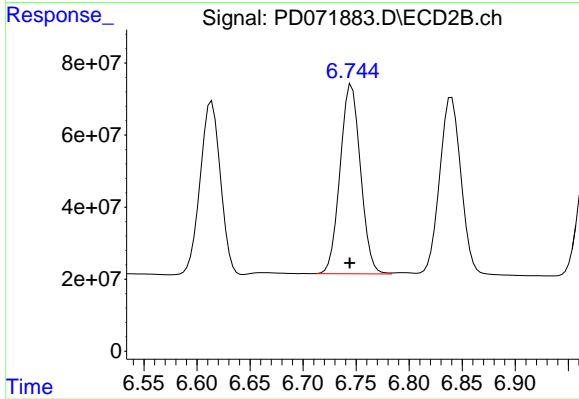
Manual Integrations
APPROVED
 Reviewed By :Abdul Mirza 09/15/2022
 Supervised By :Ankita Jodhani 09/15/2022



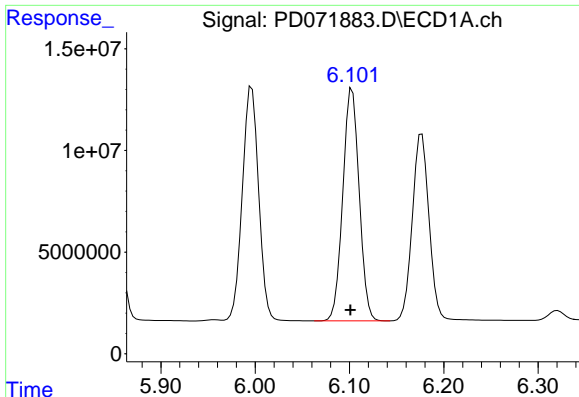
#15 Endosulfan II
 R.T.: 6.840 min
 Delta R.T.: 0.002 min
 Response: 686130502
 Conc: 55.41 ng/ml



#16 4,4'-DDD
 R.T.: 5.849 min
 Delta R.T.: 0.001 min
 Response: 141191393
 Conc: 55.68 ng/ml



#16 4,4'-DDD
 R.T.: 6.746 min
 Delta R.T.: 0.002 min
 Response: 703120668
 Conc: 59.16 ng/ml



#17 4,4'-DDT

R.T.: 6.103 min
 Delta R.T.: 0.002 min
 Response: 138345028
 Conc: 52.56 ng/ml

Instrument :

ECD_D

ClientSampleId :

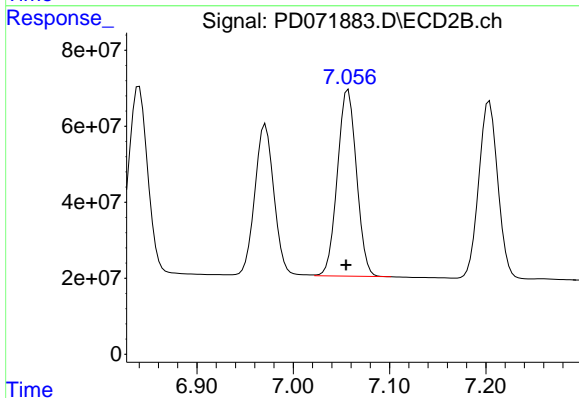
PSTDCCC050

Manual Integrations

APPROVED

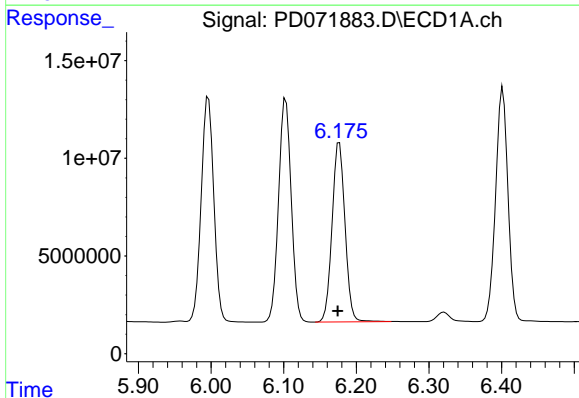
Reviewed By :Abdul Mirza 09/15/2022

Supervised By :Ankita Jodhani 09/15/2022



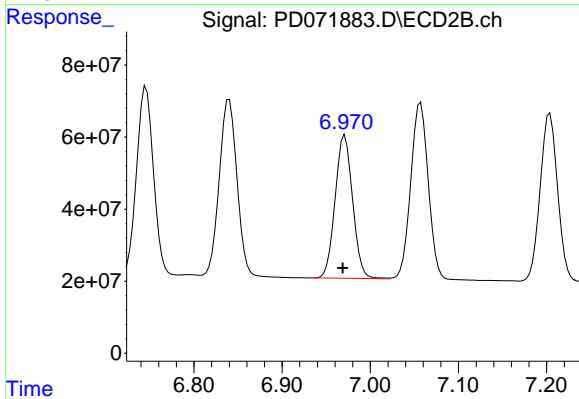
#17 4,4'-DDT

R.T.: 7.057 min
 Delta R.T.: 0.002 min
 Response: 675698824
 Conc: 54.70 ng/ml



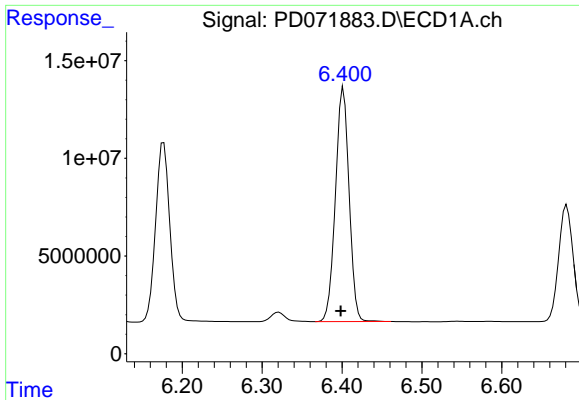
#18 Endrin aldehyde

R.T.: 6.177 min
 Delta R.T.: 0.002 min
 Response: 113658139
 Conc: 51.39 ng/ml



#18 Endrin aldehyde

R.T.: 6.971 min
 Delta R.T.: 0.002 min
 Response: 547598775
 Conc: 56.72 ng/ml

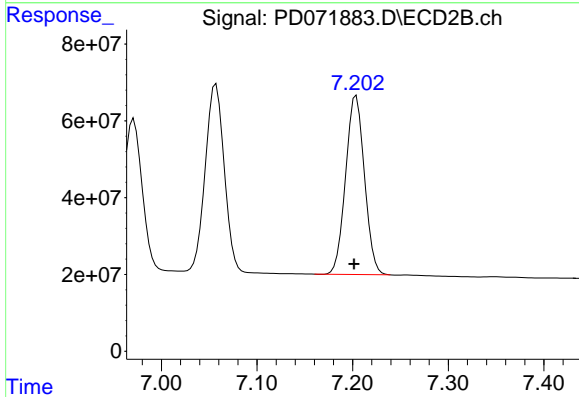


#19 Endosulfan Sulfate
 R.T.: 6.402 min
 Delta R.T.: 0.003 min
 Response: 142203526
 Conc: 53.02 ng/ml

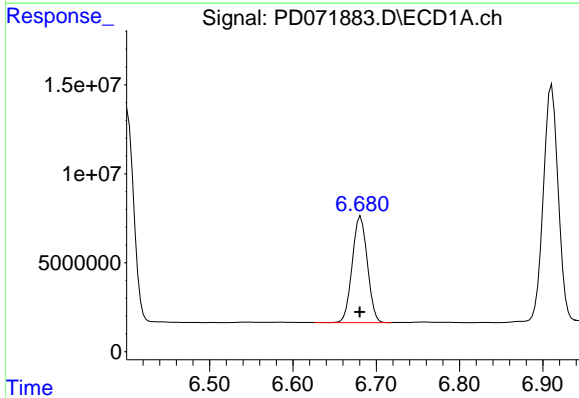
Instrument :
 ECD_D
 ClientSampleId :
 PSTDCCC050

Manual Integrations
APPROVED

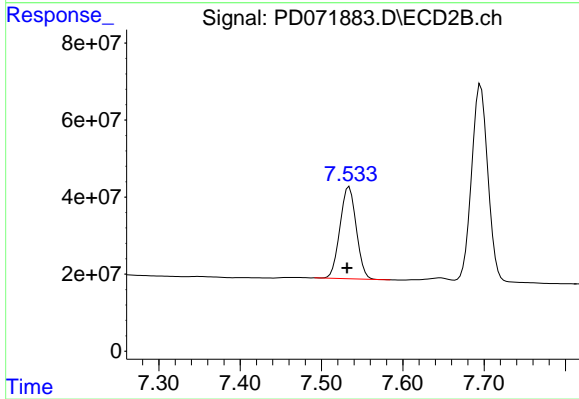
Reviewed By :Abdul Mirza 09/15/2022
 Supervised By :Ankita Jodhani 09/15/2022



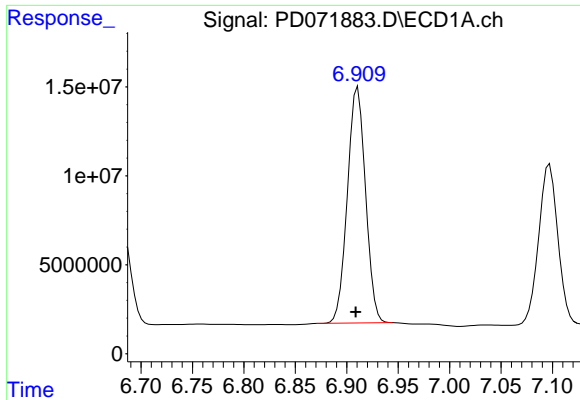
#19 Endosulfan Sulfate
 R.T.: 7.204 min
 Delta R.T.: 0.002 min
 Response: 639268370
 Conc: 57.32 ng/ml



#20 Methoxychlor
 R.T.: 6.681 min
 Delta R.T.: 0.001 min
 Response: 75512795
 Conc: 50.43 ng/ml



#20 Methoxychlor
 R.T.: 7.534 min
 Delta R.T.: 0.003 min
 Response: 330994785
 Conc: 54.45 ng/ml



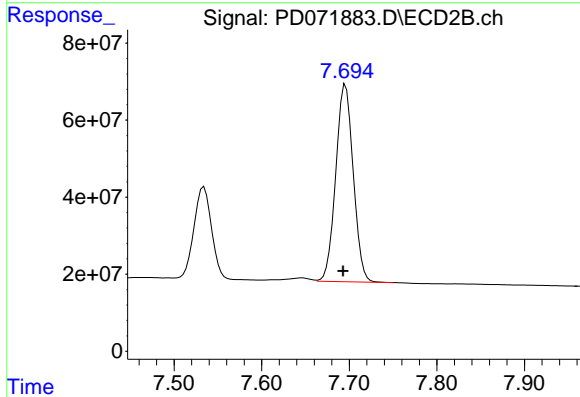
#21 Endrin ketone

R.T.: 6.911 min
 Delta R.T.: 0.002 min
 Response: 162974804
 Conc: 54.31 ng/ml

Instrument :
 ECD_D
 ClientSampleId :
 PSTDCCC050

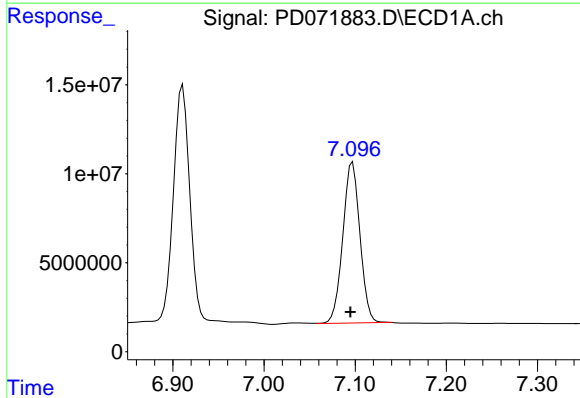
Manual Integrations
 APPROVED

Reviewed By :Abdul Mirza 09/15/2022
 Supervised By :Ankita Jodhani 09/15/2022



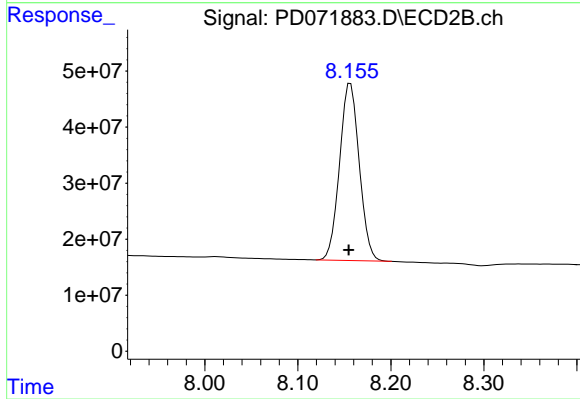
#21 Endrin ketone

R.T.: 7.696 min
 Delta R.T.: 0.003 min
 Response: 710190788
 Conc: 57.10 ng/ml



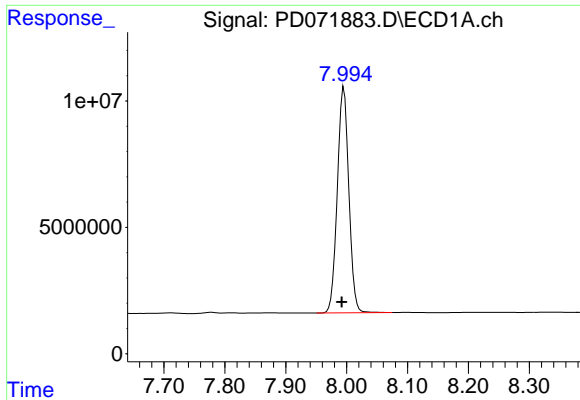
#22 Mirex

R.T.: 7.097 min
 Delta R.T.: 0.003 min
 Response: 118125865
 Conc: 50.12 ng/ml



#22 Mirex

R.T.: 8.157 min
 Delta R.T.: 0.002 min
 Response: 463518448
 Conc: 53.52 ng/ml



#28 Decachlorobiphenyl

R.T.: 7.996 min
Delta R.T.: 0.003 min
Response: 117230097
Conc: 46.53 ng/ml

Instrument :

ECD_D

ClientSampleId :

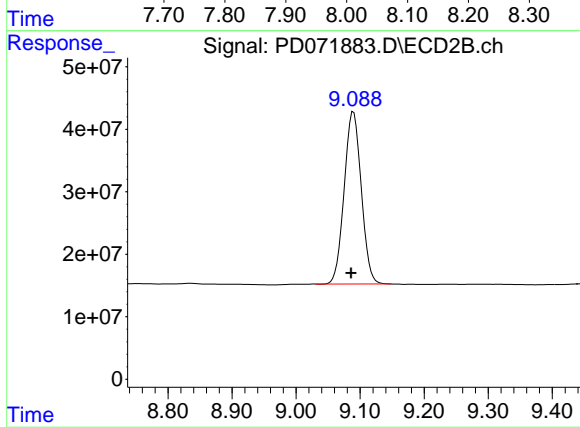
PSTDCCC050

Manual Integrations

APPROVED

Reviewed By :Abdul Mirza 09/15/2022

Supervised By :Ankita Jodhani 09/15/2022



#28 Decachlorobiphenyl

R.T.: 9.090 min
Delta R.T.: 0.004 min
Response: 510331499
Conc: 54.89 ng/ml