

Data Path : Z:\pestpcbsrv\HPCHEM1\ECD_D\Data\PD091523\
 Data File : PD077993.D
 Signal(s) : Signal #1: ECD1A.ch Signal #2: ECD2B.ch
 Acq On : 14 Sep 2023 22:52
 Operator : AR\AJ
 Sample : 04380-21
 Misc :
 ALS Vial : 39 Sample Multiplier: 1

Instrument :
 ECD_D
 ClientSampleId :

Integration File signal 1: autoint1.e
 Integration File signal 2: autoint2.e
 Quant Time: Sep 15 04:35:37 2023
 Quant Method : Z:\pestpcbsrv\HPCHEM1\ECD_D\Method\PD090623CLP.M
 Quant Title : GC Extractables
 QLast Update : Wed Sep 06 16:40:06 2023
 Response via : Initial Calibration
 Integrator: ChemStation

Volume Inj. : 1 µl
 Signal #1 Phase : ZB-MR2 Signal #2 Phase: ZB-MR2
 Signal #1 Info : 30M x 0.32mm x0.5 Signal #2 Info : 30M x 0.32mm x 0.25µm

Compound	RT#1	RT#2	Resp#1	Resp#2	ng/ml	ng/ml

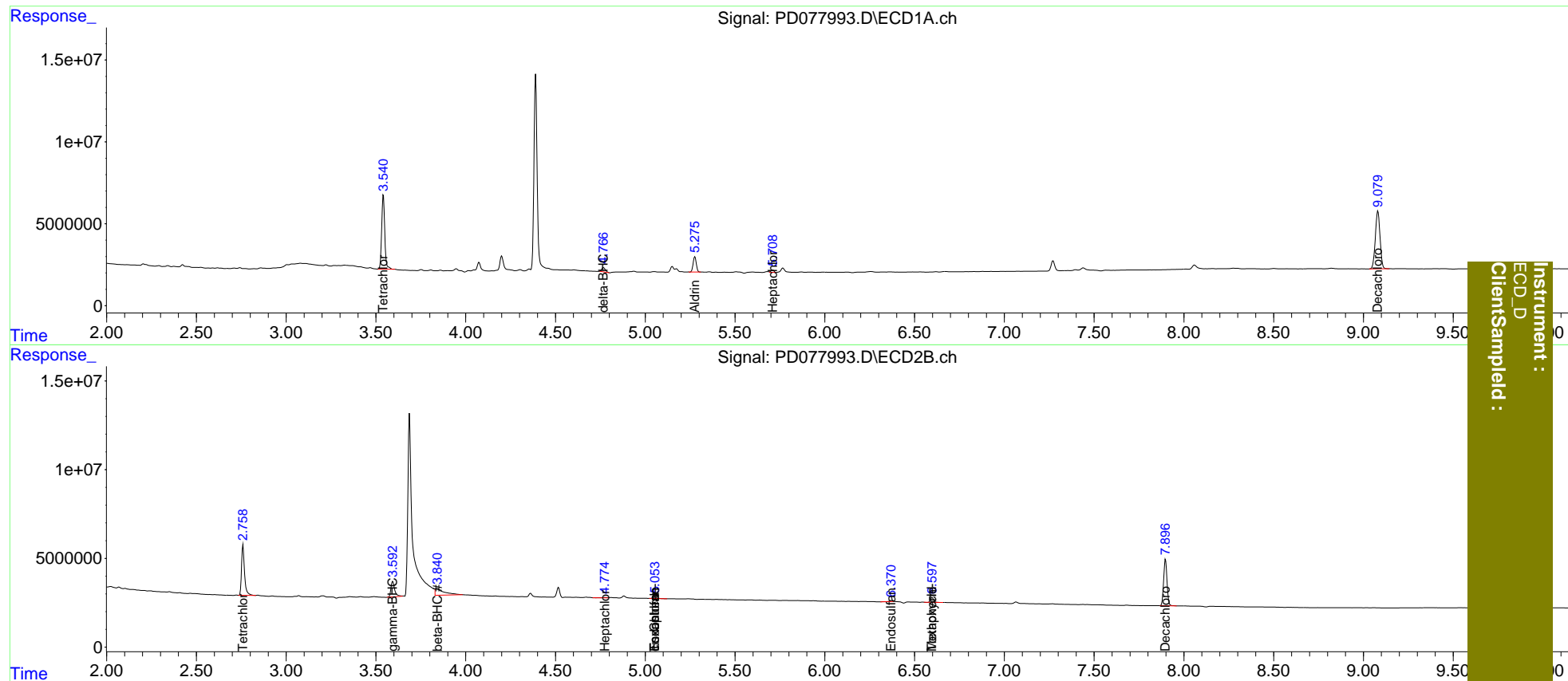
System Monitoring Compounds						
1) SA Tetrachlo...	3.541	2.760	53689694	32855748	21.157	22.232
2) SA Decachlor...	9.080	7.897	64230092	34017011	20.561	21.004
Target Compounds						
2) A alpha-BHC	0.000	3.302f	0	119230	N.D.	<MDL
3) MA gamma-BHC...	4.354	3.593	373074	12721438	<MDL	5.892 #
5) MB Aldrin	5.277	0.000	11351744	0	2.719	N.D. #
6) B beta-BHC	0.000	3.842f	0	13511597	N.D.	13.674
7) B delta-BHC	4.768	0.000	3622364	0	0.902	N.D. #
8) B Heptachlo...	5.710	4.775f	1598211	256580	0.414	0.122 #
9) A Endosulfan I	0.000	5.054	0	1144525	N.D.	0.638
11) B cis-Chlor...	0.000	5.054	0	1144525	N.D.	0.560
19) B Endosulfa...	0.000	6.371f	0	558304	N.D.	0.338
20) A Methoxychlor	0.000	6.598	0	3225998	N.D.	4.134
22) Toxaphene-1	0.000	5.054f	0	1144525	N.D.	109.652
25) Toxaphene-4	0.000	6.598	0	3225998	N.D.	83.592

(f)=RT Delta > 1/2 Window (#)=Amounts differ by > 25% (m)=manual int.

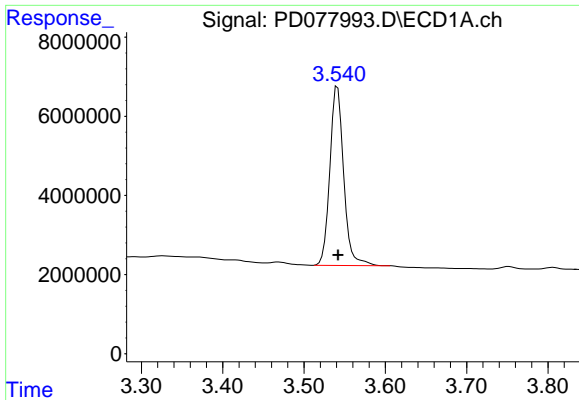
Data Path : Z:\pestpcbsrv\HPCHEM1\ECD_D\Data\PD091523\
 Data File : PD077993.D
 Signal(s) : Signal #1: ECD1A.ch Signal #2: ECD2B.ch
 Acq On : 14 Sep 2023 22:52
 Operator : AR\AJ
 Sample : 04380-21
 Misc :
 ALS Vial : 39 Sample Multiplier: 1

Integration File signal 1: autoint1.e
 Integration File signal 2: autoint2.e
 Quant Time: Sep 15 04:35:37 2023
 Quant Method : Z:\pestpcbsrv\HPCHEM1\ECD_D\Method\PD090623CLP.M
 Quant Title : GC Extractables
 QLast Update : Wed Sep 06 16:40:06 2023
 Response via : Initial Calibration
 Integrator: ChemStation

Volume Inj. : 1 µl
 Signal #1 Phase : ZB-MR1 Signal #2 Phase: ZB-MR2
 Signal #1 Info : 30M x 0.32mm x0.5 Signal #2 Info : 30M x 0.32mm x 0.25µm

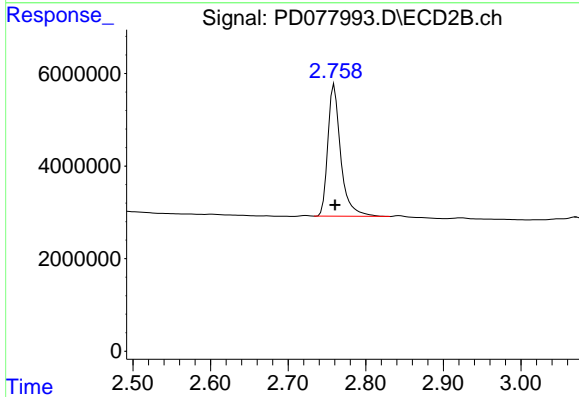


Instrument :
 ECD_D
 ClientSampled :

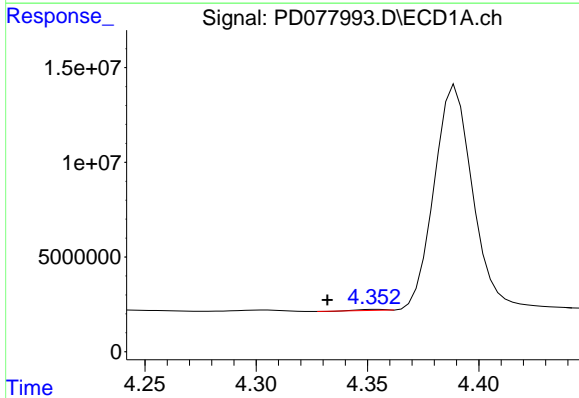


#1 Tetrachloro-m-xylene
 R.T.: 3.541 min
 Delta R.T.: 0.000 min
 Response: 53689694
 Conc: 21.16 ng/ml

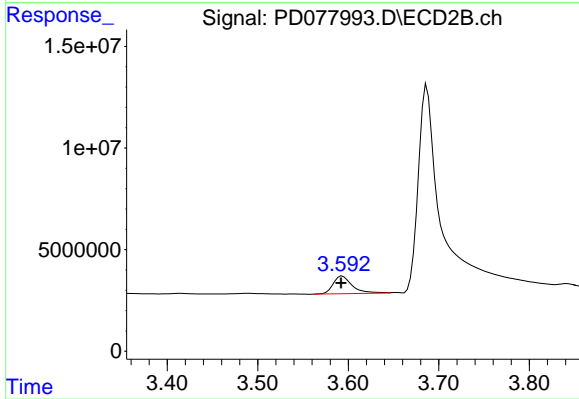
Instrument :
 ECD_D
 ClientSampleId :



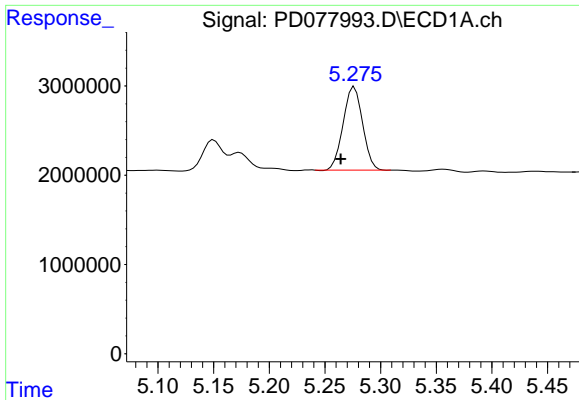
#1 Tetrachloro-m-xylene
 R.T.: 2.760 min
 Delta R.T.: -0.001 min
 Response: 32855748
 Conc: 22.23 ng/ml



#3 gamma-BHC (Lindane)
 R.T.: 4.354 min
 Delta R.T.: 0.022 min
 Response: 373074
 Conc: N.D.

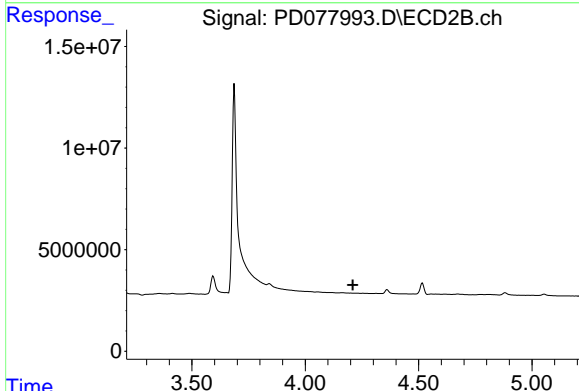


#3 gamma-BHC (Lindane)
 R.T.: 3.593 min
 Delta R.T.: 0.002 min
 Response: 12721438
 Conc: 5.89 ng/ml

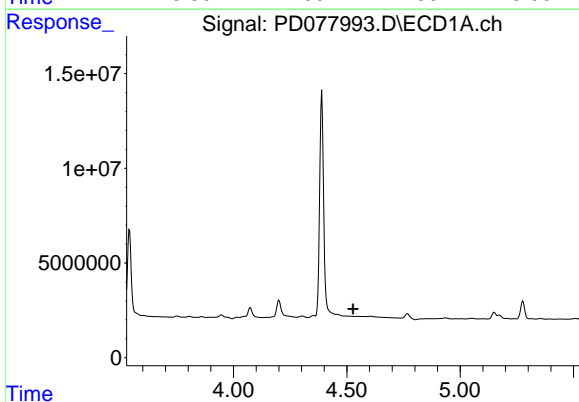


#5 Aldrin
 R.T.: 5.277 min
 Delta R.T.: 0.012 min
 Response: 11351744
 Conc: 2.72 ng/ml

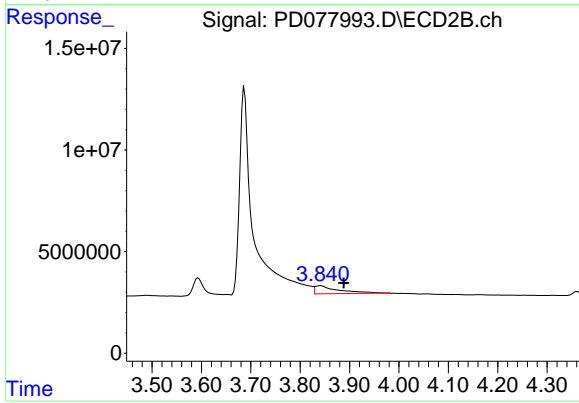
Instrument :
 ECD_D
 ClientSampleId :



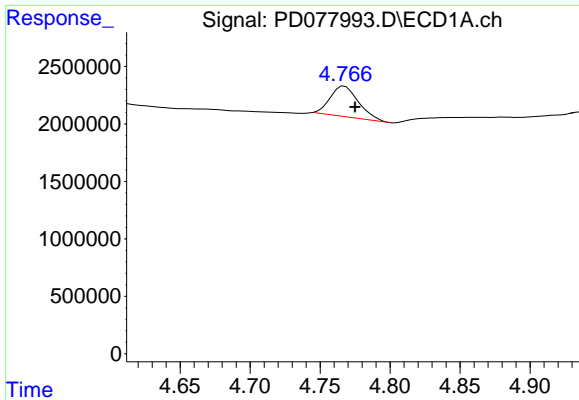
#5 Aldrin
 R.T.: 0.000 min
 Exp R.T. : 4.210 min
 Response: 0
 Conc: N.D.



#6 beta-BHC
 R.T.: 0.000 min
 Exp R.T. : 4.528 min
 Response: 0
 Conc: N.D.



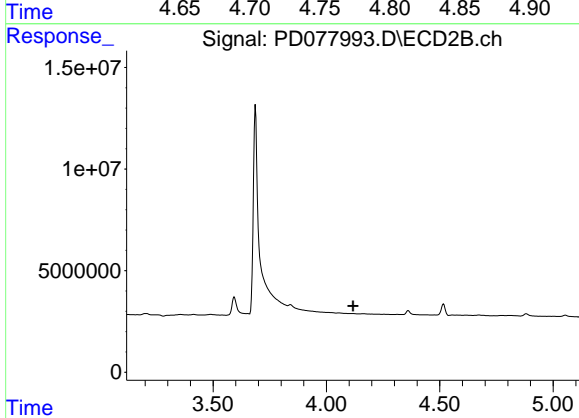
#6 beta-BHC
 R.T.: 3.842 min
 Delta R.T.: -0.047 min
 Response: 13511597
 Conc: 13.67 ng/ml



#7 delta-BHC

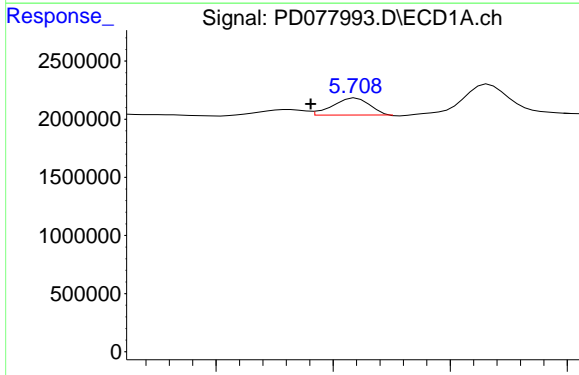
R.T.: 4.768 min
 Delta R.T.: -0.008 min
 Response: 3622364
 Conc: 0.90 ng/ml

Instrument :
 ECD_D
 ClientSampleId :



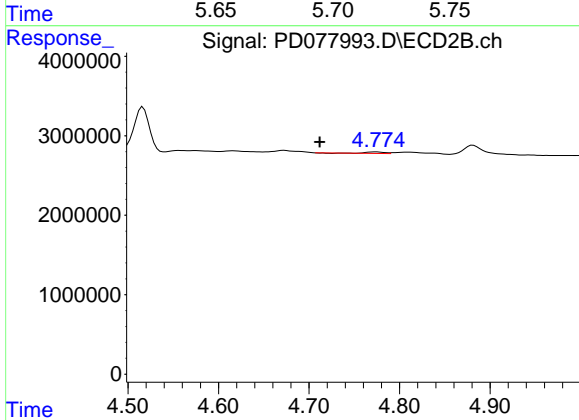
#7 delta-BHC

R.T.: 0.000 min
 Exp R.T. : 4.118 min
 Response: 0
 Conc: N.D.



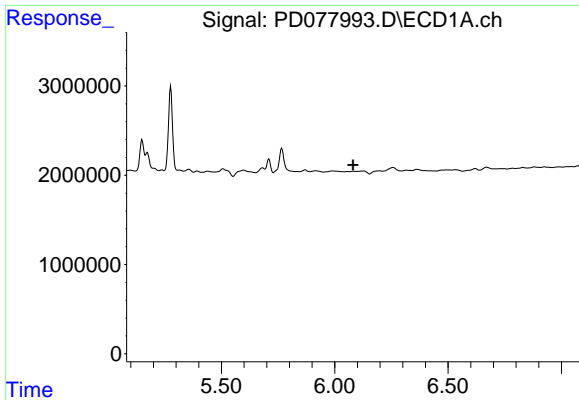
#8 Heptachlor epoxide

R.T.: 5.710 min
 Delta R.T.: 0.019 min
 Response: 1598211
 Conc: 0.41 ng/ml



#8 Heptachlor epoxide

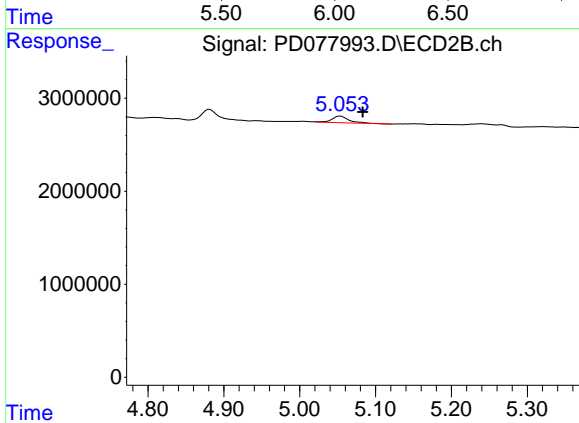
R.T.: 4.775 min
 Delta R.T.: 0.063 min
 Response: 256580
 Conc: 0.12 ng/ml



#9 Endosulfan I

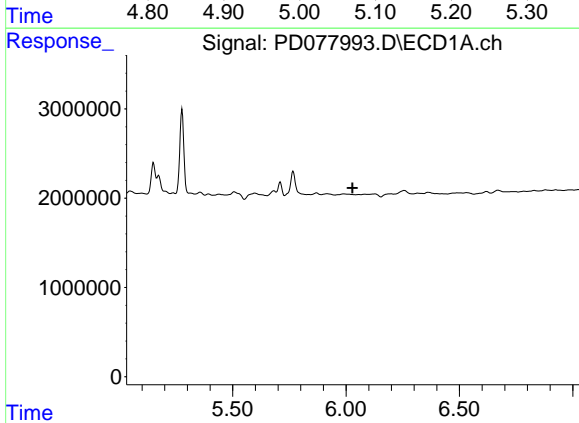
R.T.: 0.000 min
 Exp R.T. : 6.081 min
 Response: 0
 Conc: N.D.

Instrument :
 ECD_D
 ClientSampleId :



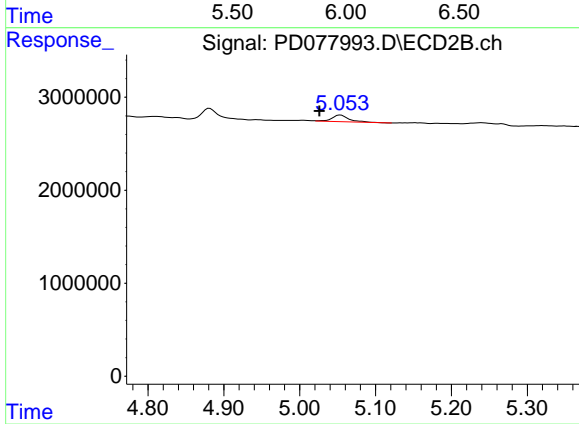
#9 Endosulfan I

R.T.: 5.054 min
 Delta R.T.: -0.029 min
 Response: 1144525
 Conc: 0.64 ng/ml



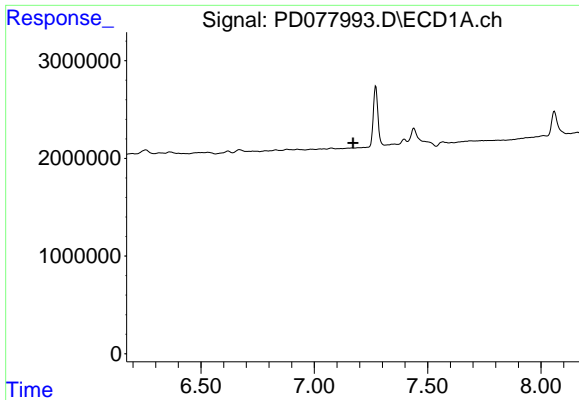
#11 cis-Chlordane

R.T.: 0.000 min
 Exp R.T. : 6.029 min
 Response: 0
 Conc: N.D.



#11 cis-Chlordane

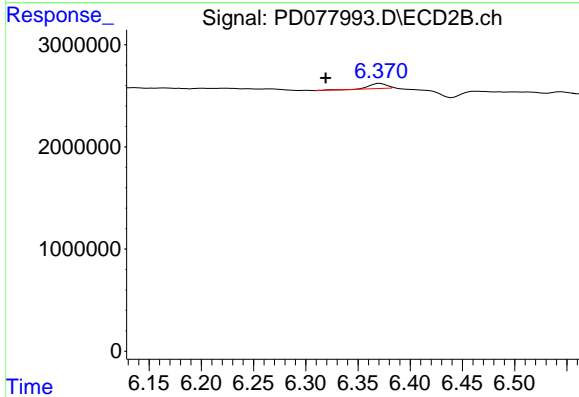
R.T.: 5.054 min
 Delta R.T.: 0.028 min
 Response: 1144525
 Conc: 0.56 ng/ml



#19 Endosulfan Sulfate

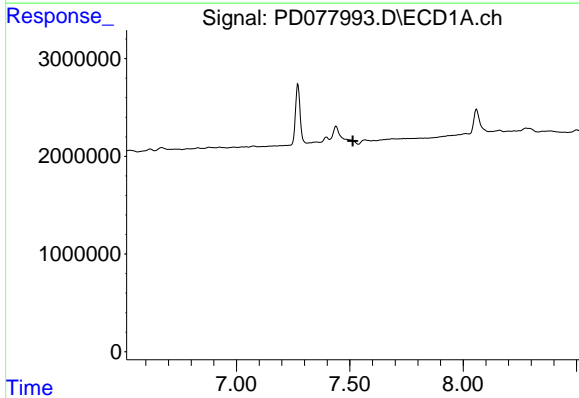
R.T.: 0.000 min
 Exp R.T. : 7.172 min
 Response: 0
 Conc: N.D.

Instrument :
 ECD_D
 ClientSampleId :



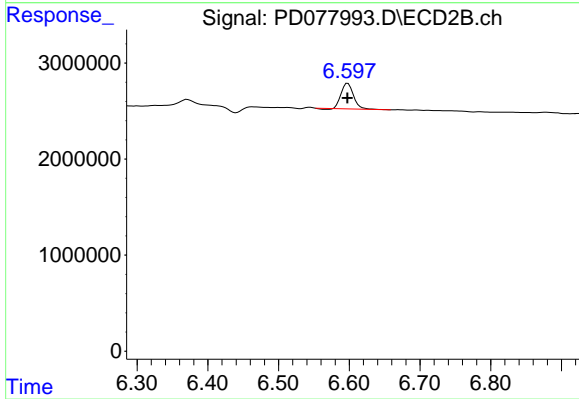
#19 Endosulfan Sulfate

R.T.: 6.371 min
 Delta R.T.: 0.052 min
 Response: 558304
 Conc: 0.34 ng/ml



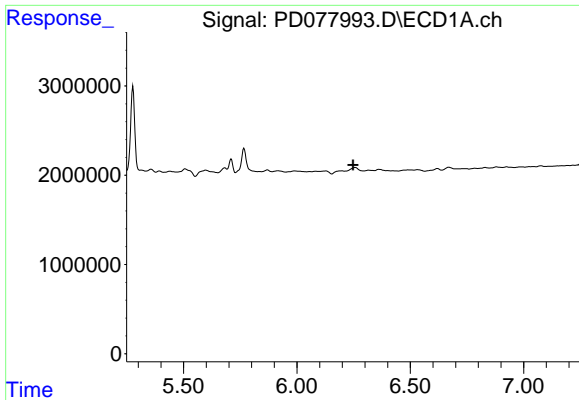
#20 Methoxychlor

R.T.: 0.000 min
 Exp R.T. : 7.513 min
 Response: 0
 Conc: N.D.



#20 Methoxychlor

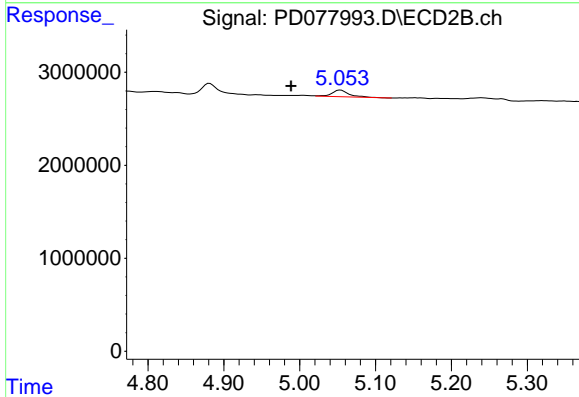
R.T.: 6.598 min
 Delta R.T.: 0.000 min
 Response: 3225998
 Conc: 4.13 ng/ml



#22 Toxaphene-1

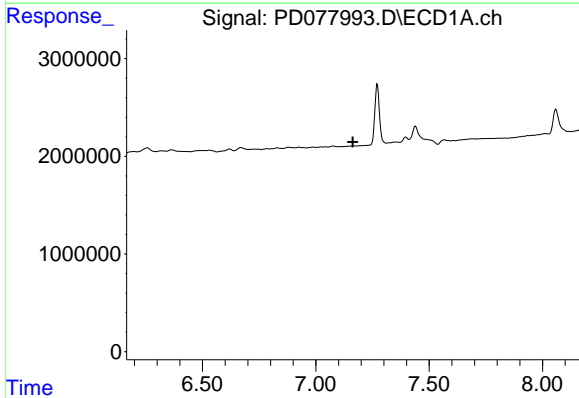
R.T.: 0.000 min
 Exp R.T.: 6.247 min
 Response: 0
 Conc: N.D.

Instrument :
 ECD_D
 ClientSampleId :



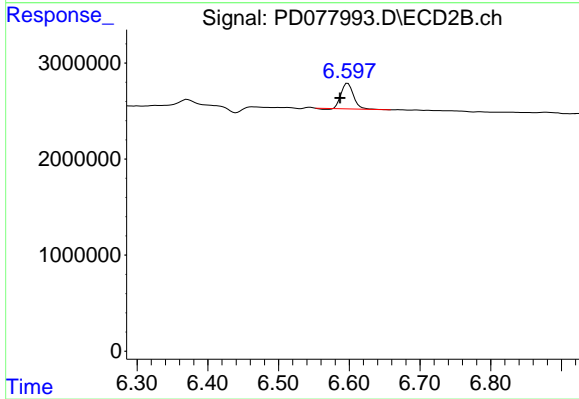
#22 Toxaphene-1

R.T.: 5.054 min
 Delta R.T.: 0.066 min
 Response: 1144525
 Conc: 109.65 ng/ml



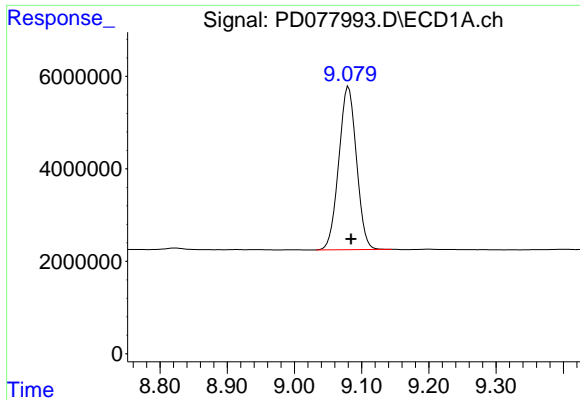
#25 Toxaphene-4

R.T.: 0.000 min
 Exp R.T.: 7.163 min
 Response: 0
 Conc: N.D.



#25 Toxaphene-4

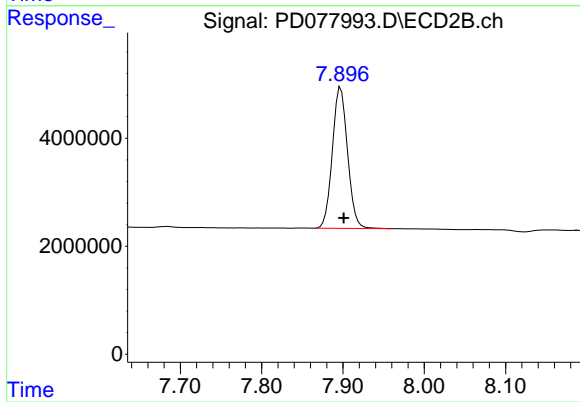
R.T.: 6.598 min
 Delta R.T.: 0.011 min
 Response: 3225998
 Conc: 83.59 ng/ml



#27 Decachlorobiphenyl

R.T.: 9.080 min
Delta R.T.: -0.004 min
Response: 64230092
Conc: 20.56 ng/ml

Instrument :
ECD_D
ClientSampleId :



#27 Decachlorobiphenyl

R.T.: 7.897 min
Delta R.T.: -0.004 min
Response: 34017011
Conc: 21.00 ng/ml