

Data Path : Z:\pestpcbsrv\HPCHEM1\ECD\_D\Data\PD091619\  
 Data File : PD054596.D  
 Signal(s) : Signal #1: ECD1A.CH Signal #2: ECD2B.CH  
 Acq On : 16 Sep 2019 21:24  
 Operator : SG\AJ  
 Sample : INDA501  
 Misc :  
 ALS Vial : 71 Sample Multiplier: 1

Instrument :  
 ECD\_D  
 ClientSampleId :  
 INDA501

Integration File signal 1: autoint1.e  
 Integration File signal 2: autoint2.e  
 Quant Time: Sep 17 05:06:21 2019  
 Quant Method : Z:\pestpcbsrv\HPCHEM1\ECD\_D\Method\PD091619CLP.M  
 Quant Title : GC Extractables  
 QLast Update : Tue Sep 17 05:04:51 2019  
 Response via : Initial Calibration  
 Integrator: ChemStation 6890 Scale Mode: Large solvent peaks clipped

Volume Inj. : 1 µl  
 Signal #1 Phase : ZB-MR2 Signal #2 Phase: ZB-MR1  
 Signal #1 Info : 30M x 0.32mm x0.2 Signal #2 Info : 30M x 0.32mm x 0.50µm

Compound	RT#1	RT#2	Resp#1	Resp#2	ng/ml	ng/ml
-----						
System Monitoring Compounds						
1) SA Tetrachlo...	3.296	3.967	75800246	80267467	84.217	84.163
27) SA Decachlor...	7.978	9.003	171.3E6	170.5E6	159.283	154.338
Target Compounds						
2) A alpha-BHC	3.724	4.354	121.0E6	122.9E6	90.881	92.693
3) MA gamma-BHC...	3.999	4.636	113.1E6	117.5E6	88.763	90.928
4) MA Heptachlor	4.286	5.143	104.5E6	118.3E6	91.818	91.157
9) A Endosulfan I	5.294	6.185	101.7E6	109.3E6	89.206	88.283
13) MA Dieldrin	5.535	6.441	242.4E6	251.9E6	180.507	182.476
14) MA Endrin	5.788	6.657	192.2E6	177.8E6	180.682	182.434
16) A 4,4'-DDD	5.922	6.779	189.5E6	203.8E6	178.773	179.803
17) MA 4,4'-DDT	6.158	7.077	179.8E6	196.8E6	195.452	190.873
20) A Methoxychlor	6.708	7.533	425.3E6	505.4E6	816.327	829.905
-----						

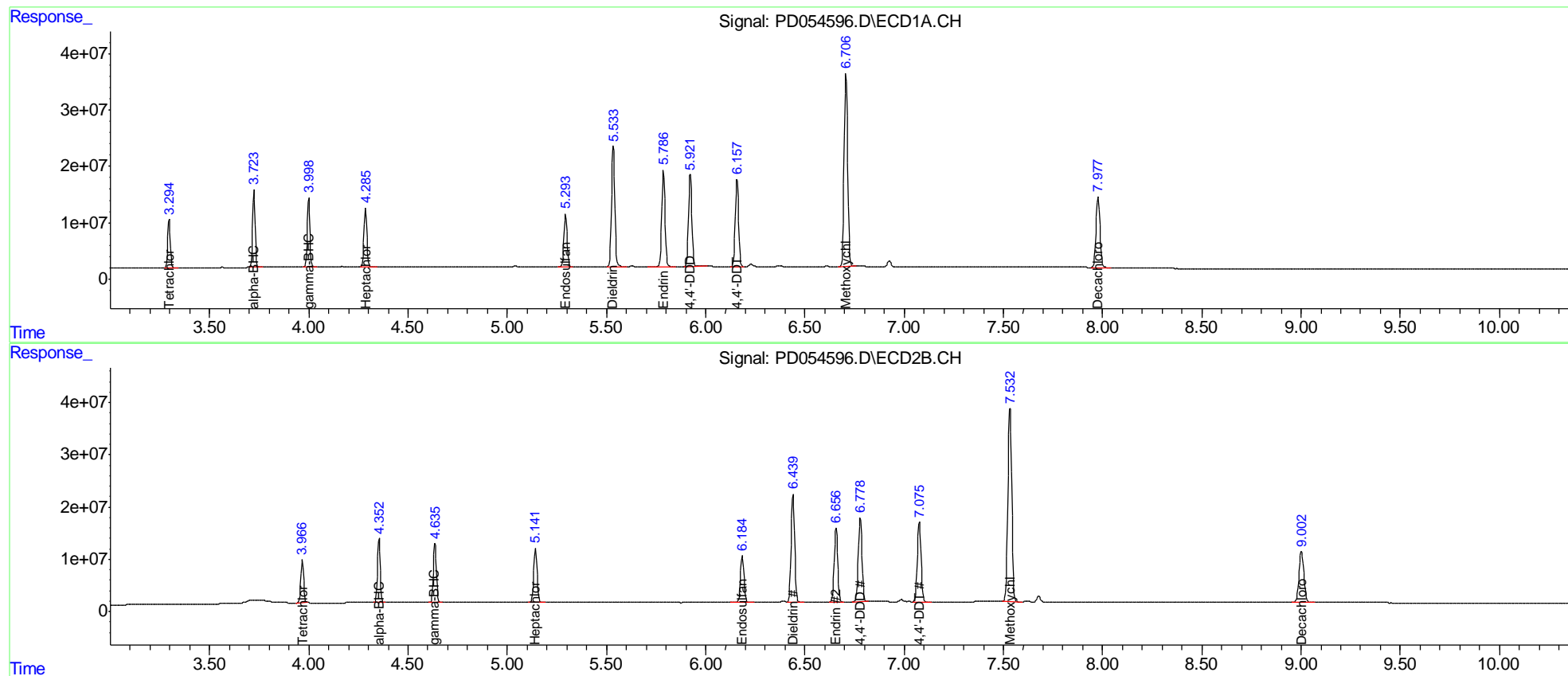
(f)=RT Delta > 1/2 Window (#)=Amounts differ by > 25% (m)=manual int.

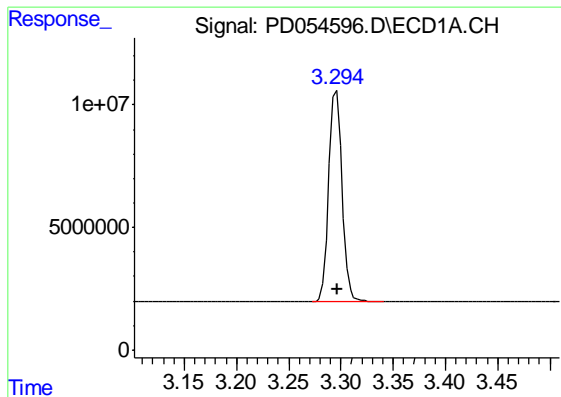
Data Path : Z:\pestpcbsrv\HPCHEM1\ECD\_D\Data\PD091619\  
 Data File : PD054596.D  
 Signal(s) : Signal #1: ECD1A.CH Signal #2: ECD2B.CH  
 Acq On : 16 Sep 2019 21:24  
 Operator : SG\AJ  
 Sample : INDA501  
 Misc :  
 ALS Vial : 71 Sample Multiplier: 1

Instrument :  
 ECD\_D  
 Client Sample Id :  
 INDA501

Integration File signal 1: autoint1.e  
 Integration File signal 2: autoint2.e  
 Quant Time: Sep 17 05:06:21 2019  
 Quant Method : Z:\pestpcbsrv\HPCHEM1\ECD\_D\Method\PD091619CLP.M  
 Quant Title : GC Extractables  
 QLast Update : Tue Sep 17 05:04:51 2019  
 Response via : Initial Calibration  
 Integrator: ChemStation 6890 Scale Mode: Large solvent peaks clipped

Volume Inj. : 1 µl  
 Signal #1 Phase : ZB-MR2 Signal #2 Phase: ZB-MR1  
 Signal #1 Info : 30M x 0.32mm x0.2 Signal #2 Info : 30M x 0.32mm x 0.50µm

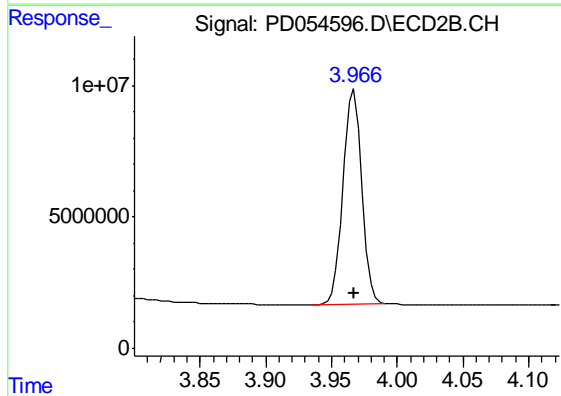




#1 Tetrachloro-m-xylene

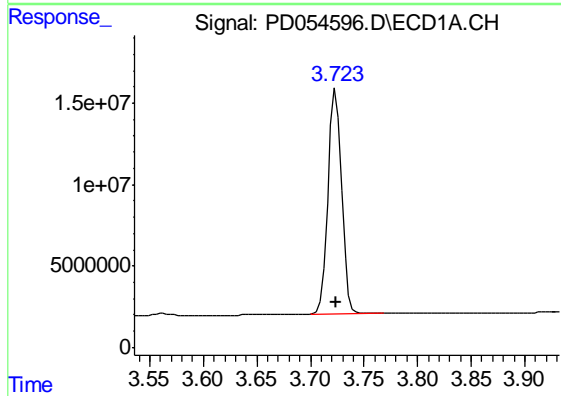
R.T.: 3.296 min  
Delta R.T.: 0.000 min  
Response: 75800246  
Conc: 84.22 ng/ml

Instrument :  
ECD\_D  
ClientSampleId :  
INDA501



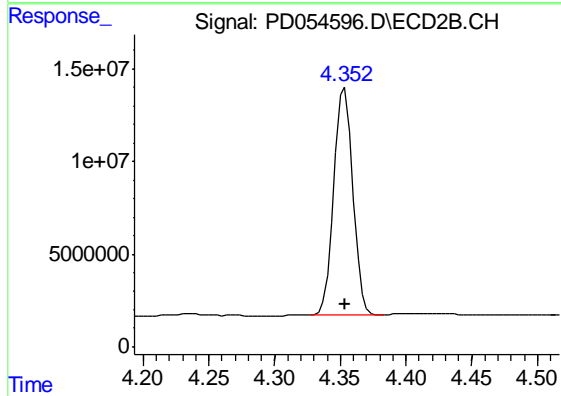
#1 Tetrachloro-m-xylene

R.T.: 3.967 min  
Delta R.T.: 0.000 min  
Response: 80267467  
Conc: 84.16 ng/ml



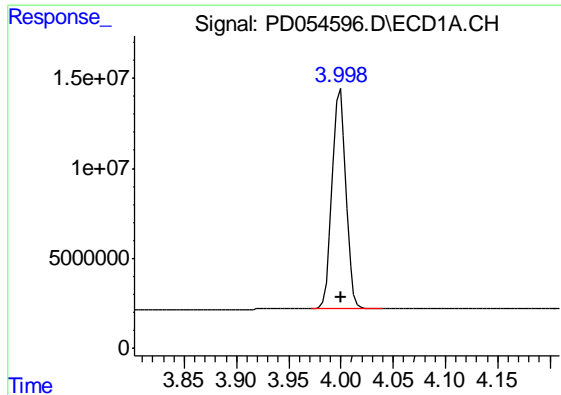
#2 alpha-BHC

R.T.: 3.724 min  
Delta R.T.: 0.000 min  
Response: 121021874  
Conc: 90.88 ng/ml



#2 alpha-BHC

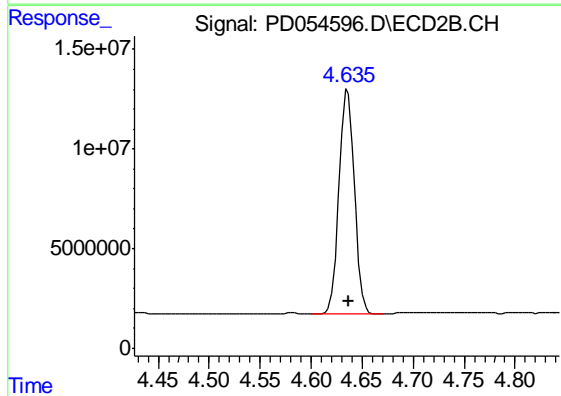
R.T.: 4.354 min  
Delta R.T.: 0.000 min  
Response: 122925711  
Conc: 92.69 ng/ml



#3 gamma-BHC (Lindane)

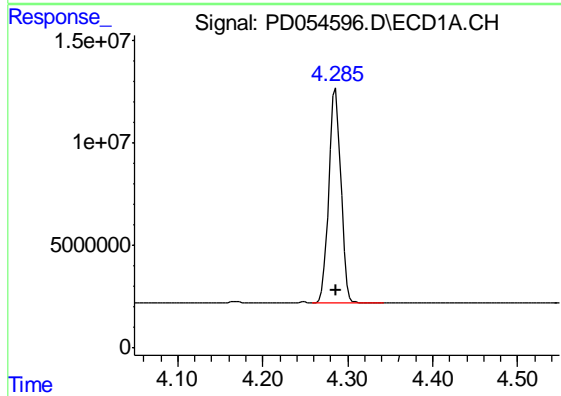
R.T.: 3.999 min  
Delta R.T.: 0.000 min  
Response: 113117916  
Conc: 88.76 ng/ml

Instrument :  
ECD\_D  
ClientSampled :  
INDA501



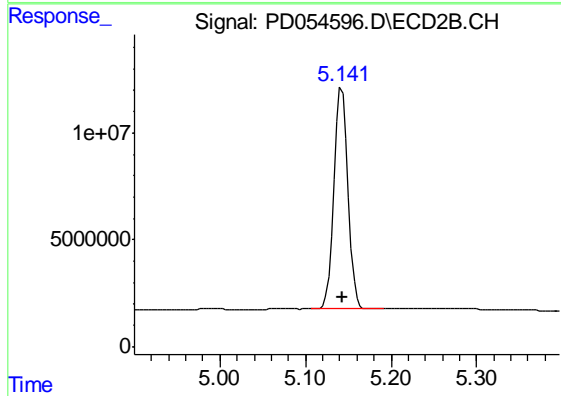
#3 gamma-BHC (Lindane)

R.T.: 4.636 min  
Delta R.T.: 0.000 min  
Response: 117522996  
Conc: 90.93 ng/ml



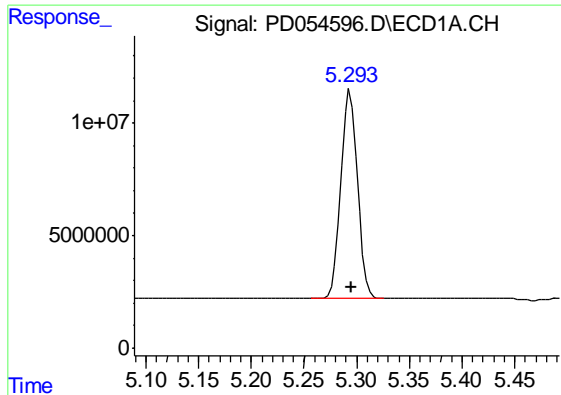
#4 Heptachlor

R.T.: 4.286 min  
Delta R.T.: 0.000 min  
Response: 104501505  
Conc: 91.82 ng/ml



#4 Heptachlor

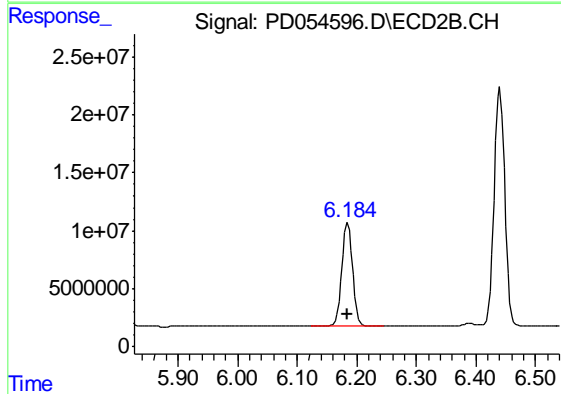
R.T.: 5.143 min  
Delta R.T.: 0.000 min  
Response: 118256149  
Conc: 91.16 ng/ml



#9 Endosulfan I

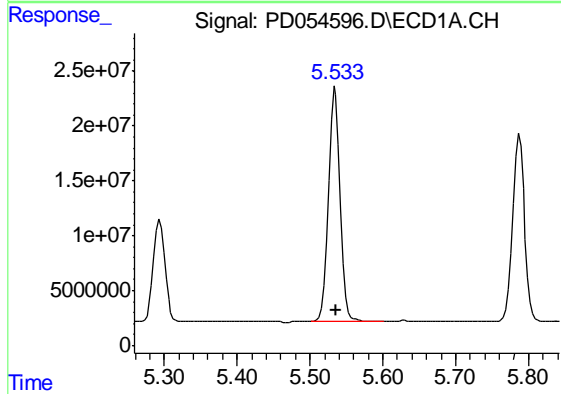
R.T.: 5.294 min  
 Delta R.T.: 0.000 min  
 Response: 101712713  
 Conc: 89.21 ng/ml

Instrument :  
 ECD\_D  
 ClientSampled :  
 INDA501



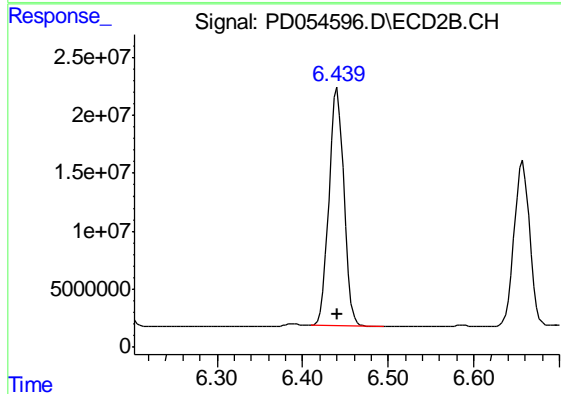
#9 Endosulfan I

R.T.: 6.185 min  
 Delta R.T.: 0.000 min  
 Response: 109303673  
 Conc: 88.28 ng/ml



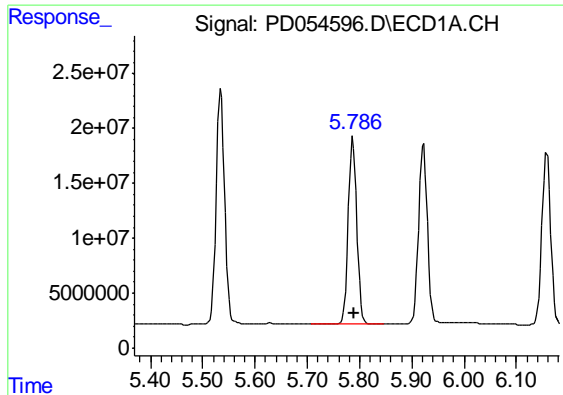
#13 Dieldrin

R.T.: 5.535 min  
 Delta R.T.: 0.000 min  
 Response: 242389172  
 Conc: 180.51 ng/ml



#13 Dieldrin

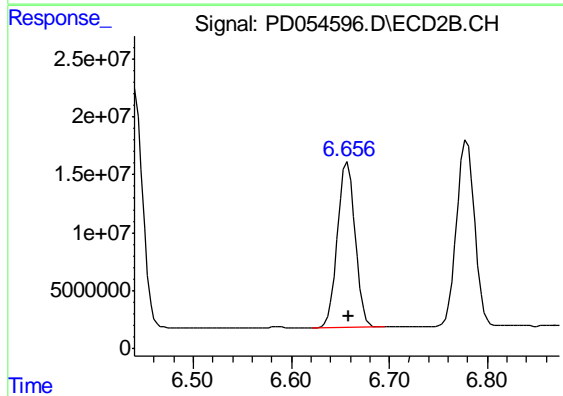
R.T.: 6.441 min  
 Delta R.T.: 0.000 min  
 Response: 251928020  
 Conc: 182.48 ng/ml



#14 Endrin

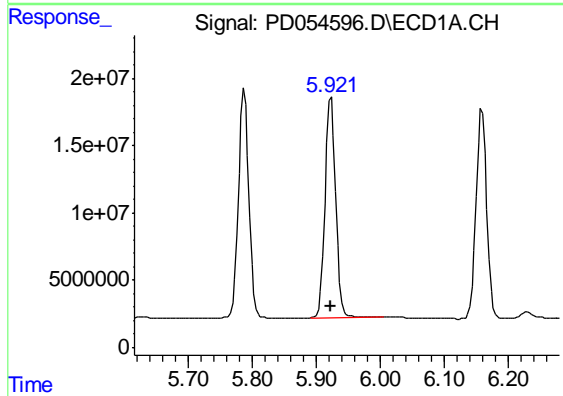
R.T.: 5.788 min  
Delta R.T.: -0.001 min  
Response: 192213410  
Conc: 180.68 ng/ml

Instrument :  
ECD\_D  
ClientSampleId :  
INDA501



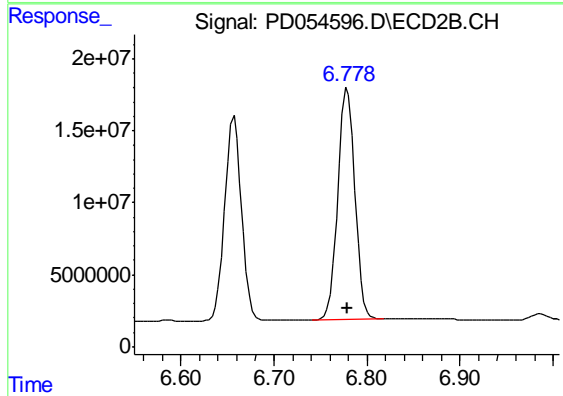
#14 Endrin

R.T.: 6.657 min  
Delta R.T.: 0.000 min  
Response: 177824326  
Conc: 182.43 ng/ml



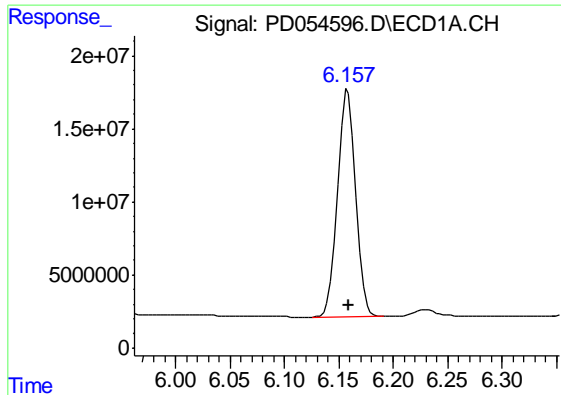
#16 4,4'-DDD

R.T.: 5.922 min  
Delta R.T.: 0.000 min  
Response: 189452349  
Conc: 178.77 ng/ml



#16 4,4'-DDD

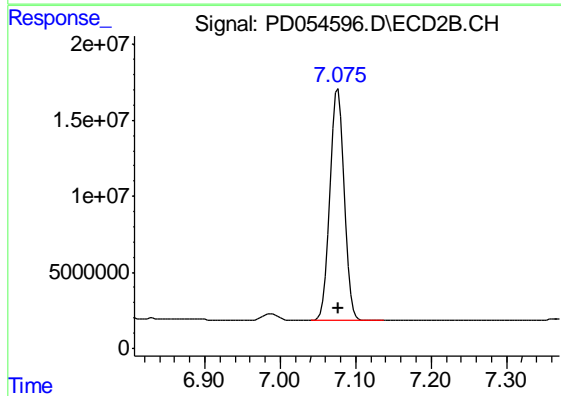
R.T.: 6.779 min  
Delta R.T.: 0.000 min  
Response: 203819087  
Conc: 179.80 ng/ml



#17 4,4'-DDT

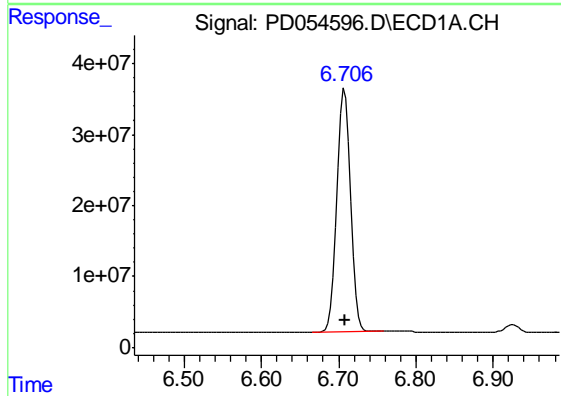
R.T.: 6.158 min  
Delta R.T.: 0.000 min  
Response: 179832562  
Conc: 195.45 ng/ml

Instrument :  
ECD\_D  
ClientSampled :  
INDA501



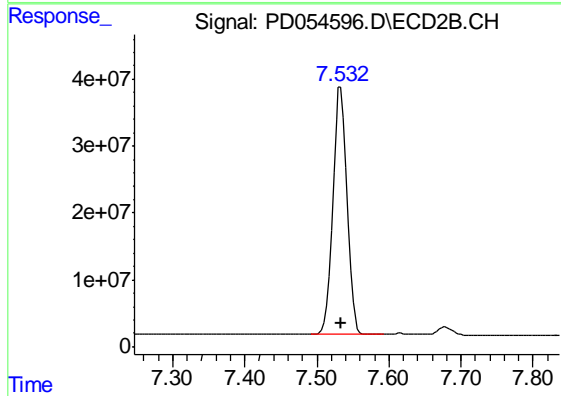
#17 4,4'-DDT

R.T.: 7.077 min  
Delta R.T.: -0.001 min  
Response: 196825543  
Conc: 190.87 ng/ml



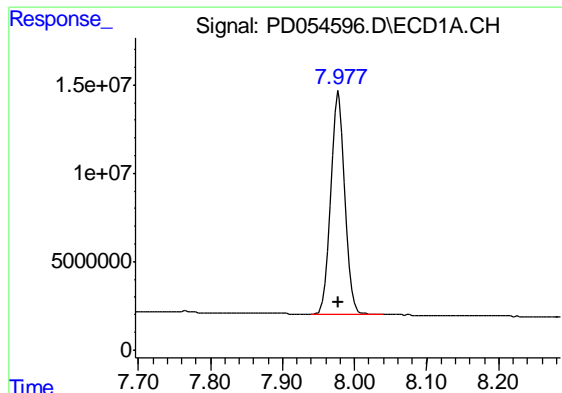
#20 Methoxychlor

R.T.: 6.708 min  
Delta R.T.: 0.000 min  
Response: 425292476  
Conc: 816.33 ng/ml



#20 Methoxychlor

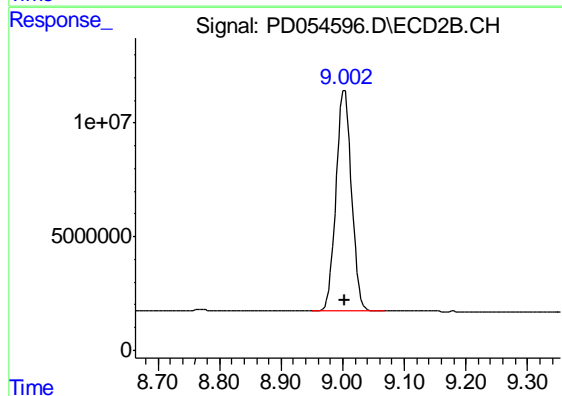
R.T.: 7.533 min  
Delta R.T.: 0.000 min  
Response: 505423974  
Conc: 829.90 ng/ml



#27 Decachlorobiphenyl

R.T.: 7.978 min  
Delta R.T.: 0.000 min  
Response: 171347021  
Conc: 159.28 ng/ml

Instrument :  
ECD\_D  
ClientSampled :  
INDA501



#27 Decachlorobiphenyl

R.T.: 9.003 min  
Delta R.T.: 0.000 min  
Response: 170506156  
Conc: 154.34 ng/ml