

Data Path : Z:\pestpcbsrv\HPCHEM1\ECD_D\Data\PD091620\
 Data File : PD059219.D
 Signal(s) : Signal #1: ECD1A.ch Signal #2: ECD2B.ch
 Acq On : 15 Sep 2020 17:57
 Operator : DD\AJ
 Sample : PSTDIC005
 Misc :
 ALS Vial : 9 Sample Multiplier: 1

Integration File signal 1: autoint1.e
 Integration File signal 2: autoint2.e
 Quant Time: Sep 16 02:01:07 2020
 Quant Method : Z:\pestpcbsrv\HPCHEM1\ECD_D\Method\PD091620.M
 Quant Title : GC Extractables
 QLast Update : Wed Sep 16 01:58:10 2020
 Response via : Initial Calibration
 Integrator: ChemStation

Volume Inj. : 2 µl
 Signal #1 Phase : ZB-MR2 Signal #2 Phase: ZB-MR1
 Signal #1 Info : 30M x 0.32mm x0.2 Signal #2 Info : 30M x 0.32mm x 0.50µm

Compound	RT#1	RT#2	Resp#1	Resp#2	ng/ml	ng/ml

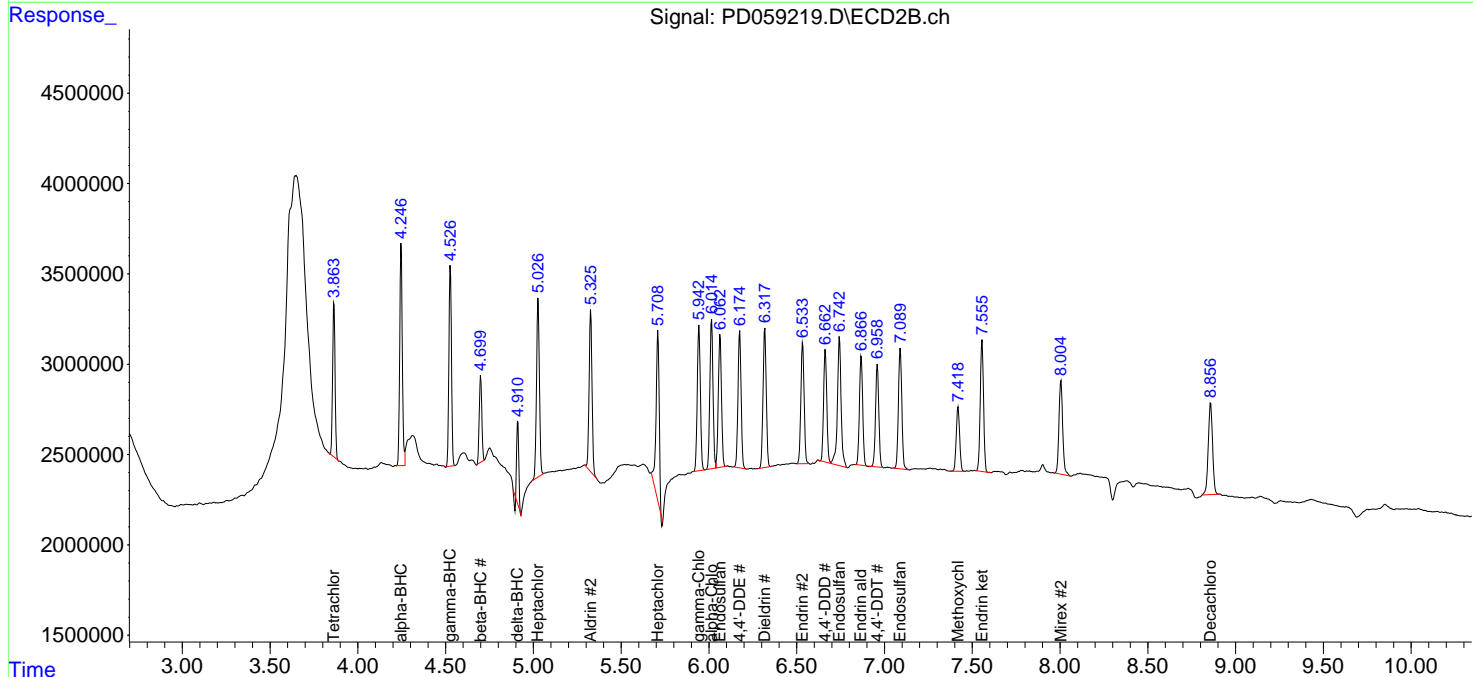
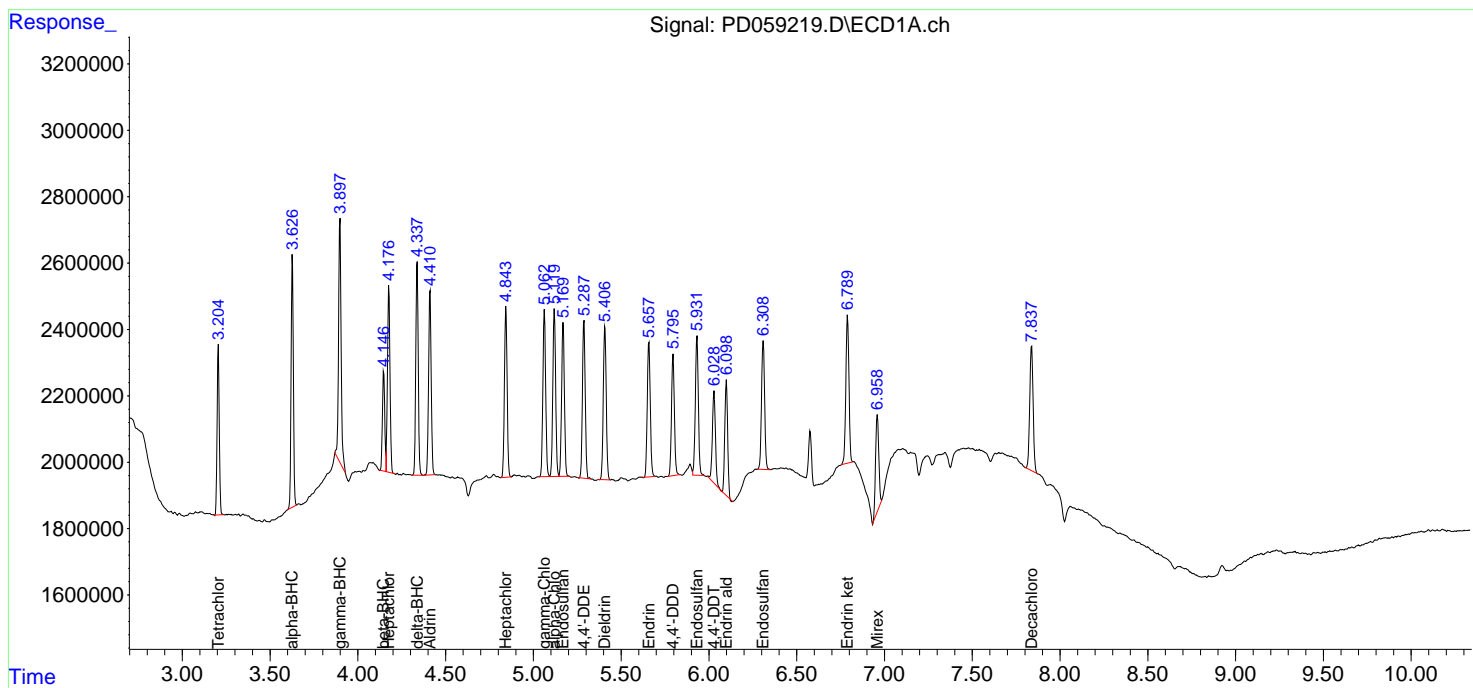
System Monitoring Compounds						
1) SA Tetrachlo...	3.206	3.865	4452597	8241929	4.910	4.804
2) SA Decachlor...	7.838	8.858	5021898	8677830	5.485	5.673
Target Compounds						
2) A alpha-BHC	3.628	4.247	6758971	12531925	4.462	4.538
3) MA gamma-BHC...	3.899	4.527	7333144	11201464	5.190	4.427
4) MA Heptachlor	4.177	5.027	5642548	11391628	4.729	4.777
5) MB Aldrin	4.412	5.327	5743796	10166523	4.673	4.486
6) B beta-BHC	4.148	4.700	2761923	4820497	5.068	4.707
7) B delta-BHC	4.338	4.911	6244568	3469625	4.534	2.036 #
8) B Heptachlo...	4.844	5.710	5490281	11199630	4.865	5.516
9) A Endosulfan I	5.170	6.064	5095837	9299271	4.833	4.746
10) B gamma-Chl...	5.063	5.943	5538764	9890251	4.835	4.632
11) B alpha-Chl...	5.120	6.015	5598700	10244258	4.915	4.770
12) B 4,4'-DDE	5.289	6.176	5258201	9366088	4.684	4.540
13) MA Dieldrin	5.408	6.319	5367519	9786930	4.783	4.619
14) MA Endrin	5.658	6.534	4850138	8650286	4.895	4.669
15) B Endosulfa...	5.932	6.744	5008870	10444638	4.981	5.553
16) A 4,4'-DDD	5.796	6.663	4155768	7842749	4.886	4.530
17) MA 4,4'-DDT	6.030	6.960	3374687	7396401	3.968	4.135
18) B Endrin al...	6.100	6.868	3928068	7729697	4.707	4.873
19) B Endosulfa...	6.310	7.090	4752821	9020055	5.101	5.038
20) A Methoxychlor	0.000	7.419	0	4828151	N.D.	4.970 #
21) B Endrin ke...	6.790	7.556	5502707	9468476	4.915	4.778
22) Mirex	6.960	8.005	3659825	7677959	4.978	5.515

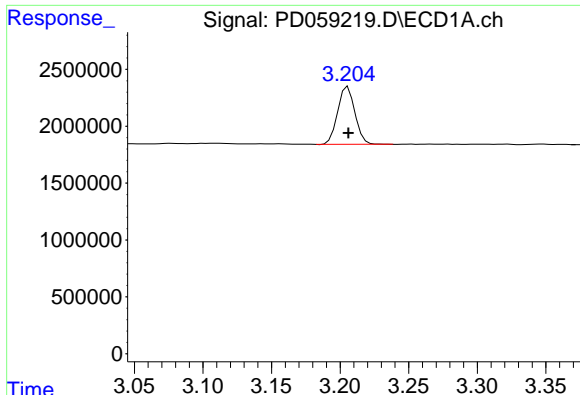
(f)=RT Delta > 1/2 Window (#)=Amounts differ by > 25% (m)=manual int.

Data Path : Z:\pestpcbsrv\HPCHEM1\ECD_D\Data\PD091620\
 Data File : PD059219.D
 Signal(s) : Signal #1: ECD1A.ch Signal #2: ECD2B.ch
 Acq On : 15 Sep 2020 17:57
 Operator : DD\AJ
 Sample : PSTDICC005
 Misc :
 ALS Vial : 9 Sample Multiplier: 1

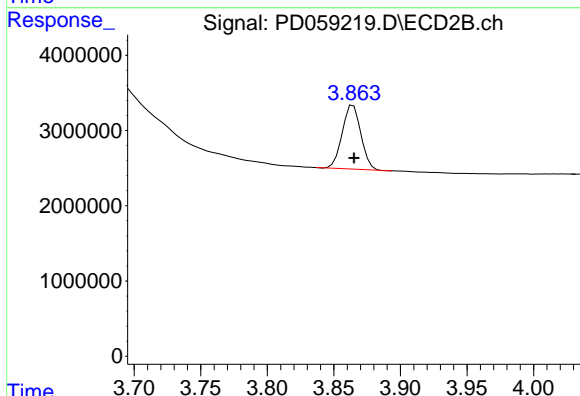
Integration File signal 1: autoint1.e
 Integration File signal 2: autoint2.e
 Quant Time: Sep 16 02:01:07 2020
 Quant Method : Z:\pestpcbsrv\HPCHEM1\ECD_D\Method\PD091620.M
 Quant Title : GC Extractables
 QLast Update : Wed Sep 16 01:58:10 2020
 Response via : Initial Calibration
 Integrator: ChemStation

Volume Inj. : 2 µl
 Signal #1 Phase : ZB-MR2 Signal #2 Phase: ZB-MR1
 Signal #1 Info : 30M x 0.32mm x0.2 Signal #2 Info : 30M x 0.32mm x 0.50µm

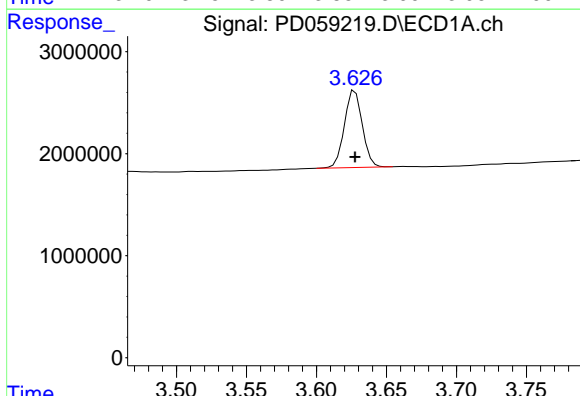




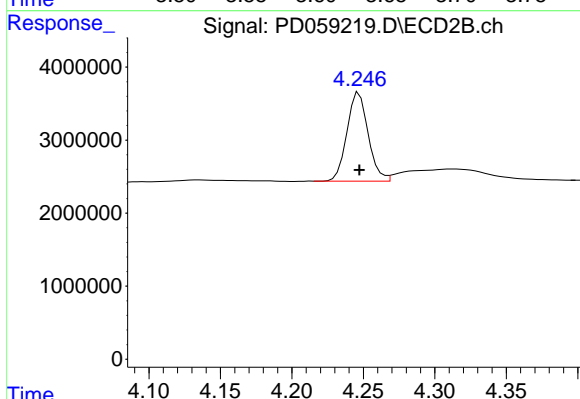
#1 Tetrachloro-m-xylene
 R.T.: 3.206 min
 Delta R.T.: 0.000 min
 Response: 4452597
 Conc: 4.91 ng/ml



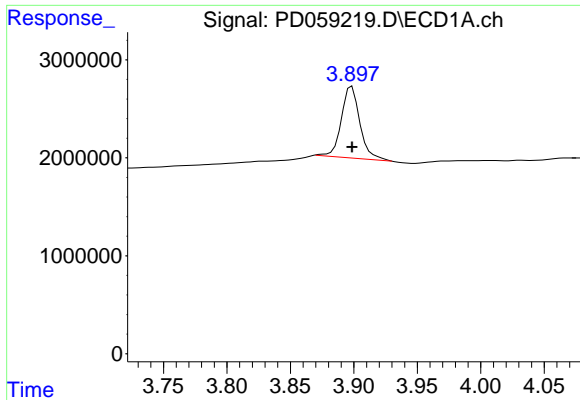
#1 Tetrachloro-m-xylene
 R.T.: 3.865 min
 Delta R.T.: 0.000 min
 Response: 8241929
 Conc: 4.80 ng/ml



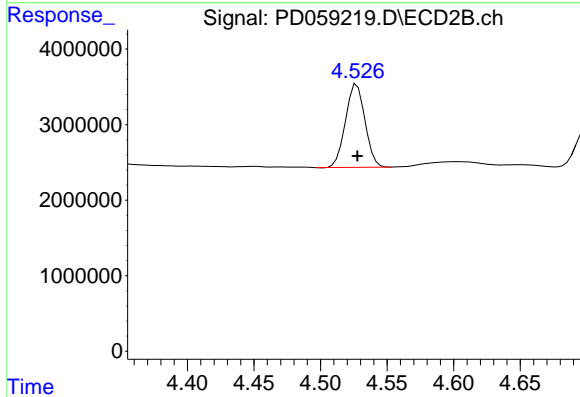
#2 alpha-BHC
 R.T.: 3.628 min
 Delta R.T.: 0.000 min
 Response: 6758971
 Conc: 4.46 ng/ml



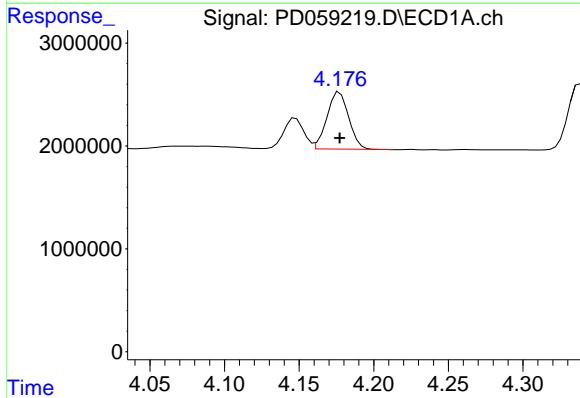
#2 alpha-BHC
 R.T.: 4.247 min
 Delta R.T.: 0.000 min
 Response: 12531925
 Conc: 4.54 ng/ml



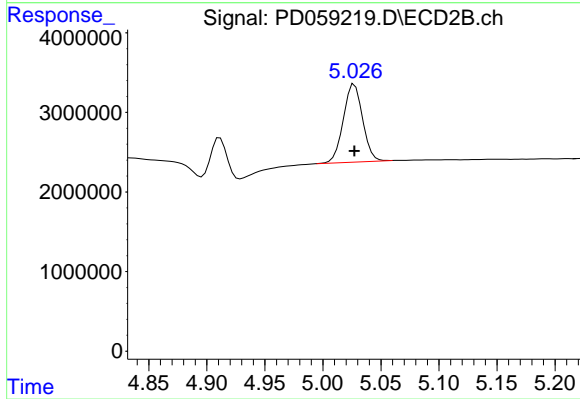
#3 gamma-BHC (Lindane)
R.T.: 3.899 min
Delta R.T.: 0.000 min
Response: 7333144
Conc: 5.19 ng/ml



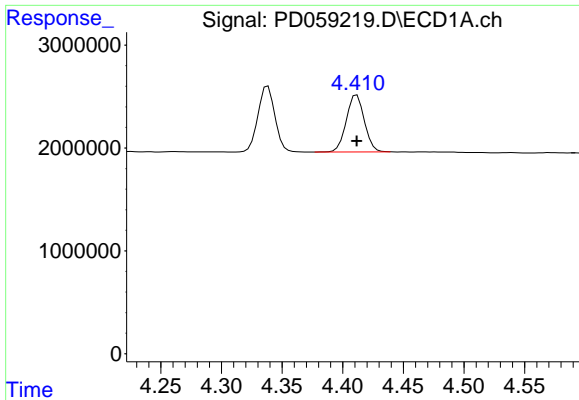
#3 gamma-BHC (Lindane)
R.T.: 4.527 min
Delta R.T.: 0.000 min
Response: 11201464
Conc: 4.43 ng/ml



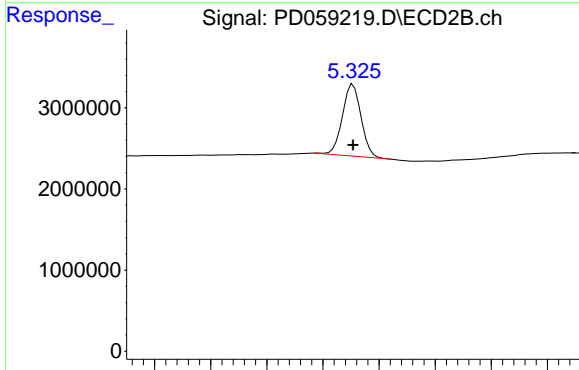
#4 Heptachlor
R.T.: 4.177 min
Delta R.T.: 0.000 min
Response: 5642548
Conc: 4.73 ng/ml



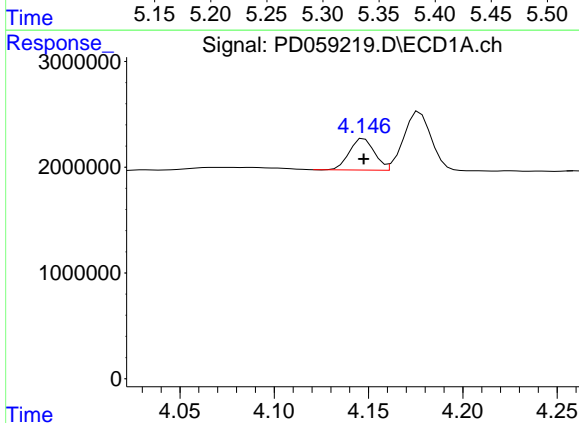
#4 Heptachlor
R.T.: 5.027 min
Delta R.T.: 0.000 min
Response: 11391628
Conc: 4.78 ng/ml



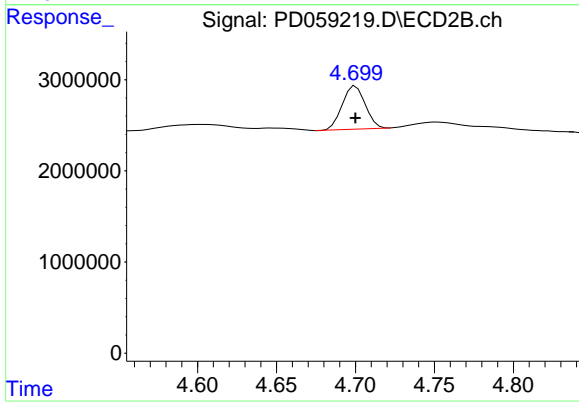
#5 Aldrin
R.T.: 4.412 min
Delta R.T.: 0.000 min
Response: 5743796
Conc: 4.67 ng/ml



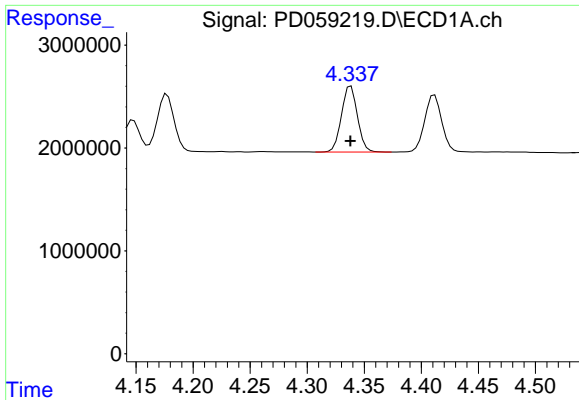
#5 Aldrin
R.T.: 5.327 min
Delta R.T.: 0.000 min
Response: 10166523
Conc: 4.49 ng/ml



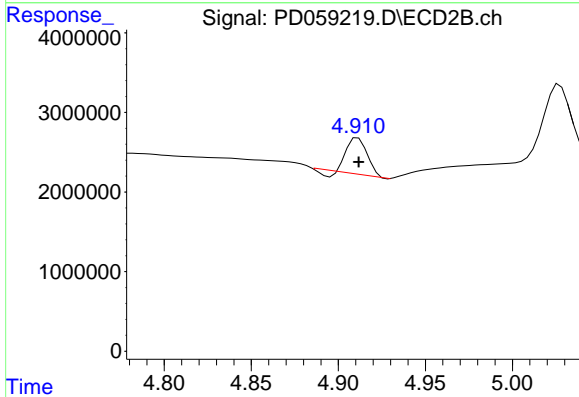
#6 beta-BHC
R.T.: 4.148 min
Delta R.T.: 0.000 min
Response: 2761923
Conc: 5.07 ng/ml



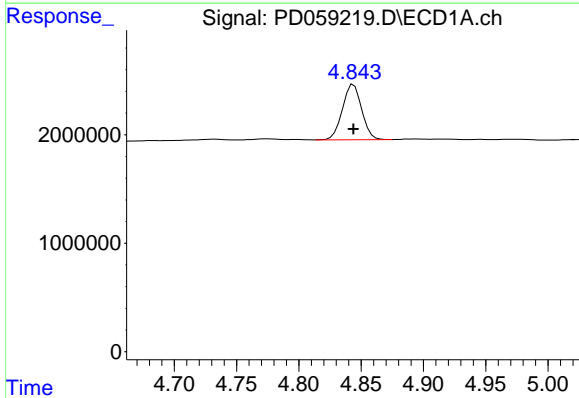
#6 beta-BHC
R.T.: 4.700 min
Delta R.T.: 0.000 min
Response: 4820497
Conc: 4.71 ng/ml



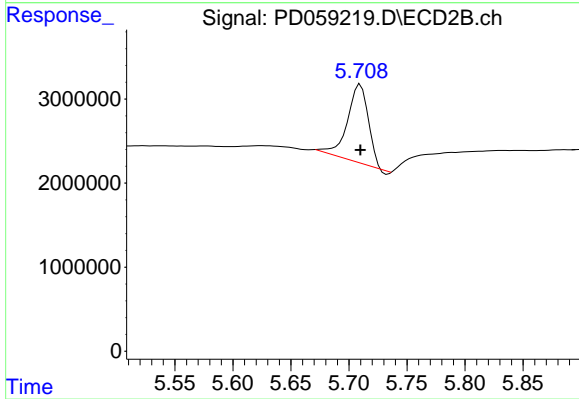
#7 delta-BHC
 R.T.: 4.338 min
 Delta R.T.: 0.000 min
 Response: 6244568
 Conc: 4.53 ng/ml



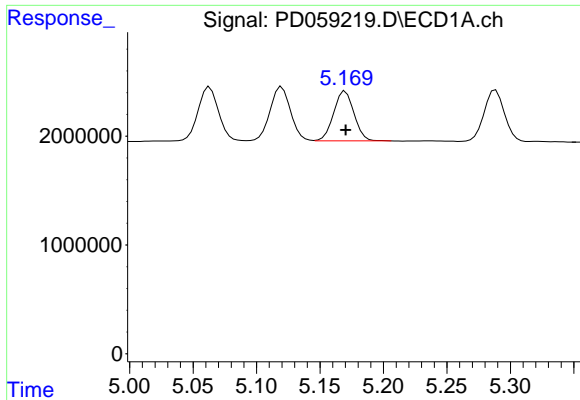
#7 delta-BHC
 R.T.: 4.911 min
 Delta R.T.: 0.000 min
 Response: 3469625
 Conc: 2.04 ng/ml



#8 Heptachlor epoxide
 R.T.: 4.844 min
 Delta R.T.: 0.000 min
 Response: 5490281
 Conc: 4.87 ng/ml

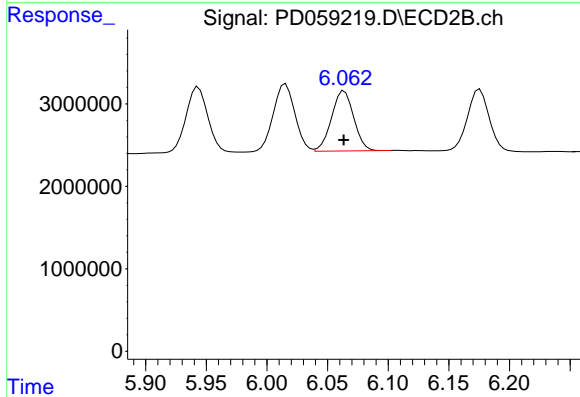


#8 Heptachlor epoxide
 R.T.: 5.710 min
 Delta R.T.: 0.000 min
 Response: 11199630
 Conc: 5.52 ng/ml



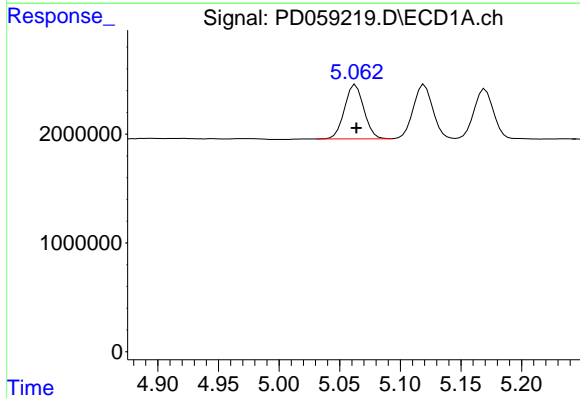
#9 Endosulfan I

R.T.: 5.170 min
 Delta R.T.: 0.000 min
 Response: 5095837
 Conc: 4.83 ng/ml



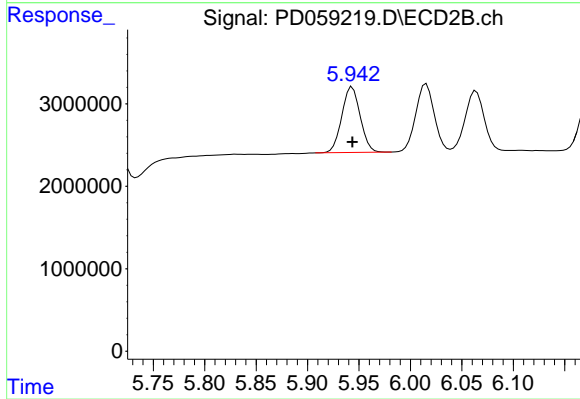
#9 Endosulfan I

R.T.: 6.064 min
 Delta R.T.: 0.000 min
 Response: 9299271
 Conc: 4.75 ng/ml



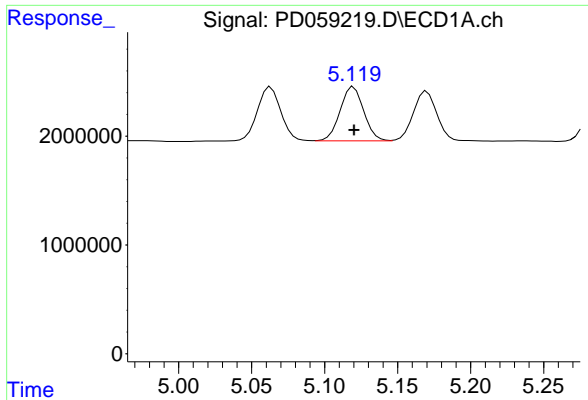
#10 gamma-Chlordane

R.T.: 5.063 min
 Delta R.T.: 0.000 min
 Response: 5538764
 Conc: 4.84 ng/ml

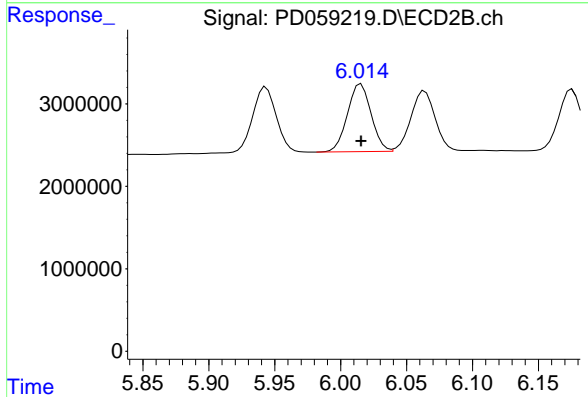


#10 gamma-Chlordane

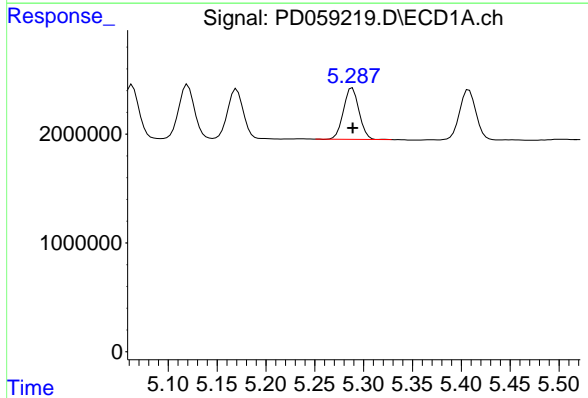
R.T.: 5.943 min
 Delta R.T.: 0.000 min
 Response: 9890251
 Conc: 4.63 ng/ml



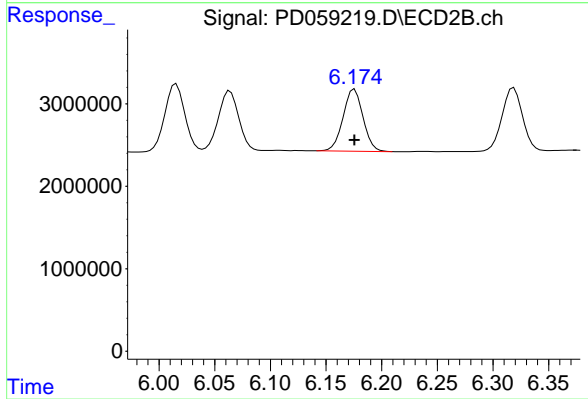
#11 alpha-Chlordane
R.T.: 5.120 min
Delta R.T.: 0.000 min
Response: 5598700
Conc: 4.91 ng/ml



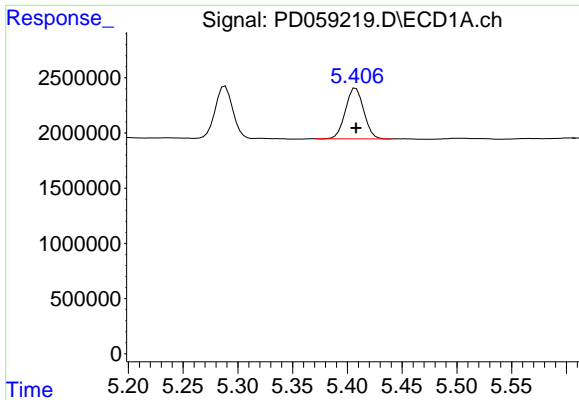
#11 alpha-Chlordane
R.T.: 6.015 min
Delta R.T.: 0.000 min
Response: 10244258
Conc: 4.77 ng/ml



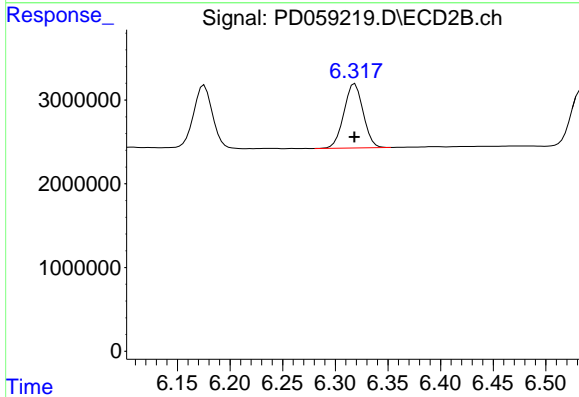
#12 4,4'-DDE
R.T.: 5.289 min
Delta R.T.: 0.000 min
Response: 5258201
Conc: 4.68 ng/ml



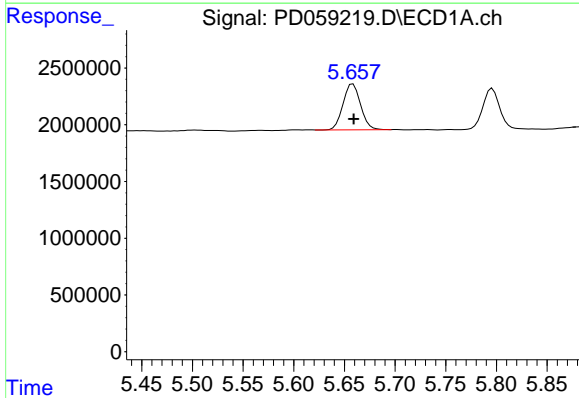
#12 4,4'-DDE
R.T.: 6.176 min
Delta R.T.: 0.000 min
Response: 9366088
Conc: 4.54 ng/ml



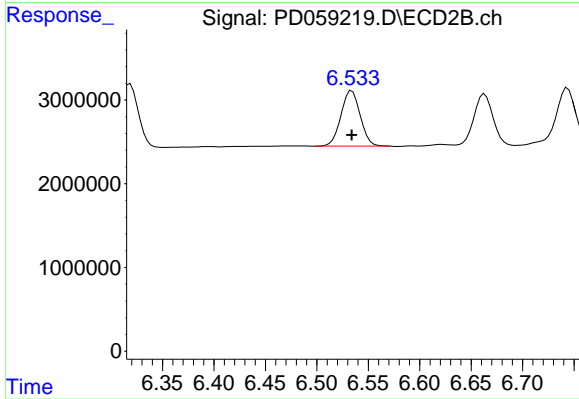
#13 Dieldrin
 R.T.: 5.408 min
 Delta R.T.: 0.000 min
 Response: 5367519
 Conc: 4.78 ng/ml



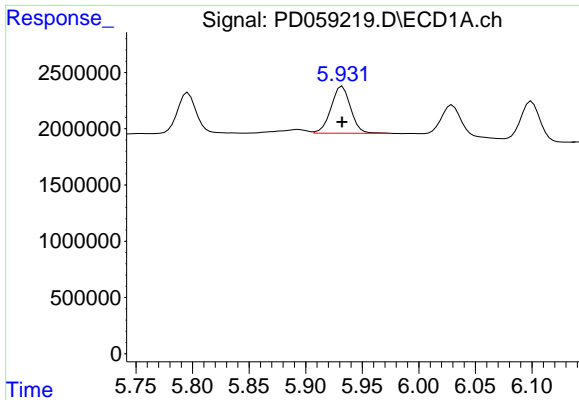
#13 Dieldrin
 R.T.: 6.319 min
 Delta R.T.: 0.000 min
 Response: 9786930
 Conc: 4.62 ng/ml



#14 Endrin
 R.T.: 5.658 min
 Delta R.T.: 0.000 min
 Response: 4850138
 Conc: 4.90 ng/ml

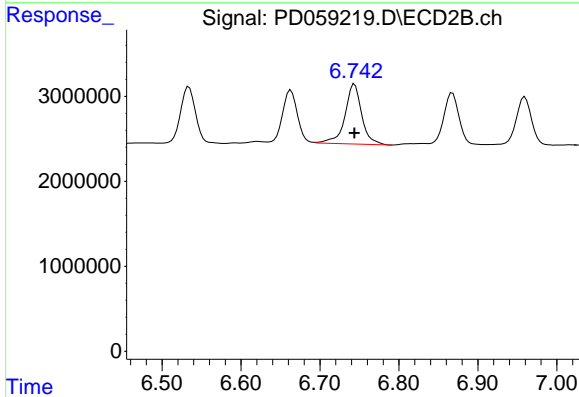


#14 Endrin
 R.T.: 6.534 min
 Delta R.T.: 0.000 min
 Response: 8650286
 Conc: 4.67 ng/ml



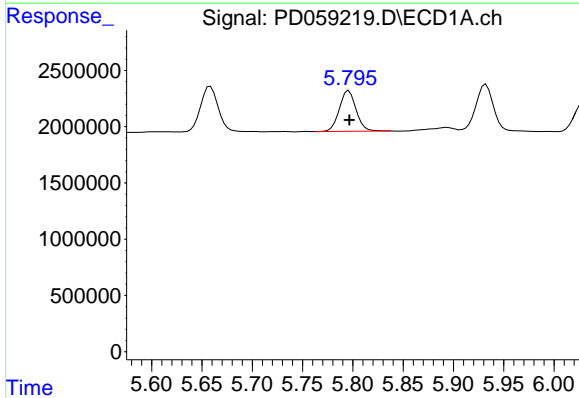
#15 Endosulfan II

R.T.: 5.932 min
 Delta R.T.: 0.000 min
 Response: 5008870
 Conc: 4.98 ng/ml



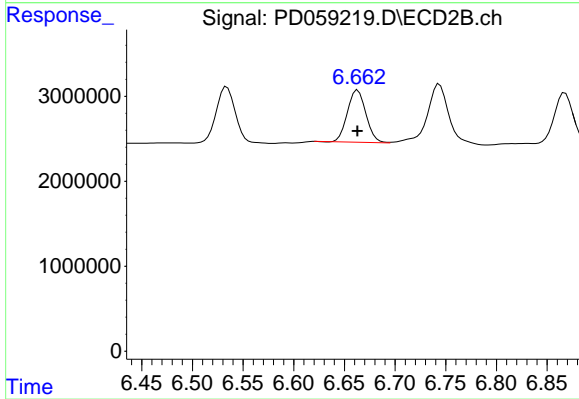
#15 Endosulfan II

R.T.: 6.744 min
 Delta R.T.: 0.000 min
 Response: 10444638
 Conc: 5.55 ng/ml



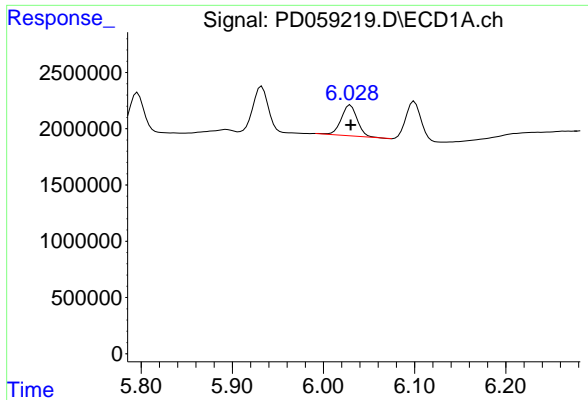
#16 4,4'-DDD

R.T.: 5.796 min
 Delta R.T.: 0.000 min
 Response: 4155768
 Conc: 4.89 ng/ml

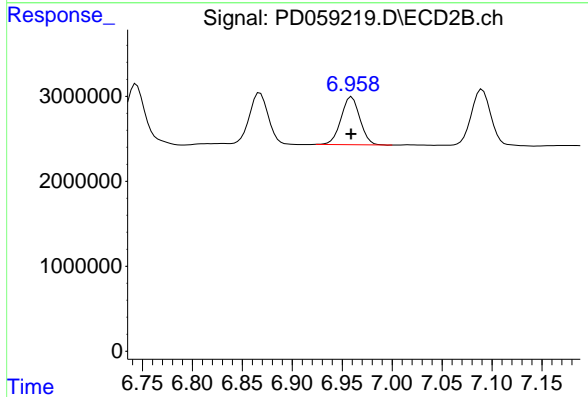


#16 4,4'-DDD

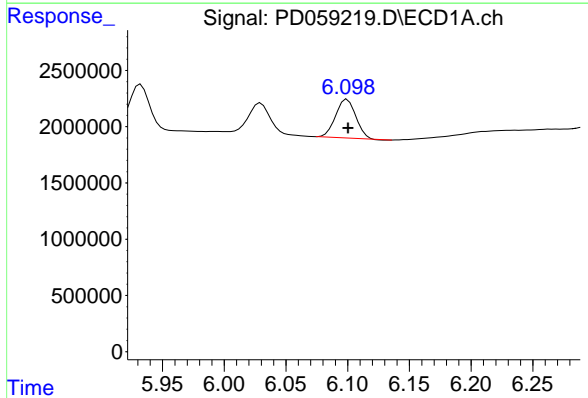
R.T.: 6.663 min
 Delta R.T.: 0.000 min
 Response: 7842749
 Conc: 4.53 ng/ml



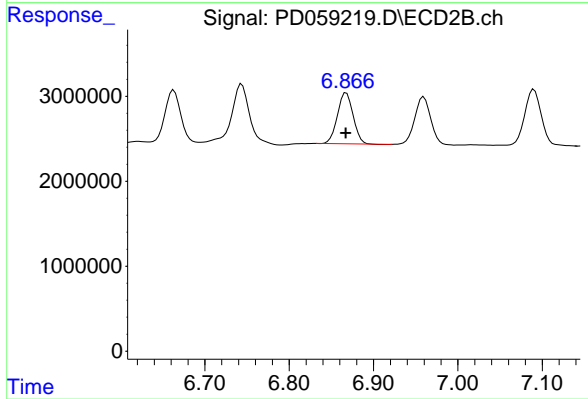
#17 4,4'-DDT
R.T.: 6.030 min
Delta R.T.: 0.000 min
Response: 3374687
Conc: 3.97 ng/ml



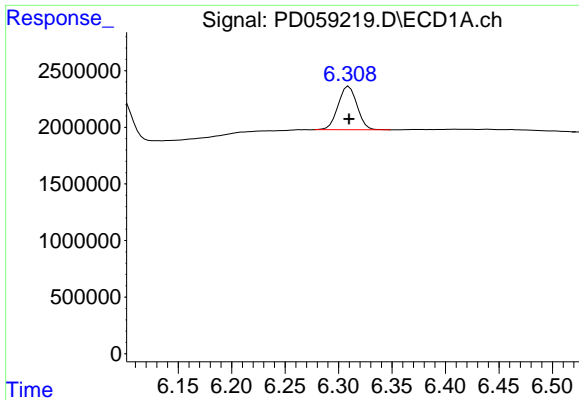
#17 4,4'-DDT
R.T.: 6.960 min
Delta R.T.: 0.000 min
Response: 7396401
Conc: 4.13 ng/ml



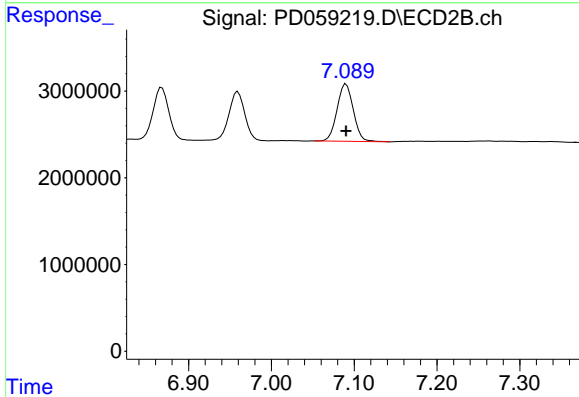
#18 Endrin aldehyde
R.T.: 6.100 min
Delta R.T.: 0.000 min
Response: 3928068
Conc: 4.71 ng/ml



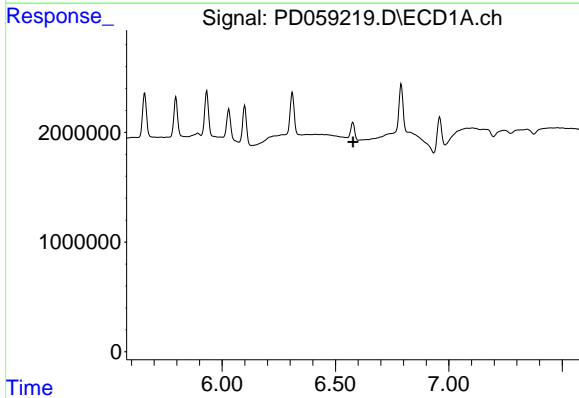
#18 Endrin aldehyde
R.T.: 6.868 min
Delta R.T.: 0.000 min
Response: 7729697
Conc: 4.87 ng/ml



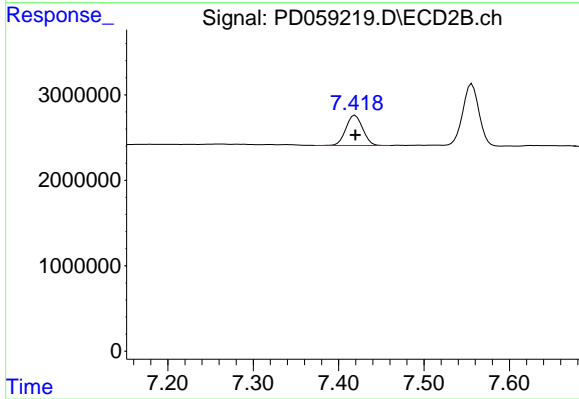
#19 Endosulfan Sulfate
 R.T.: 6.310 min
 Delta R.T.: 0.000 min
 Response: 4752821
 Conc: 5.10 ng/ml



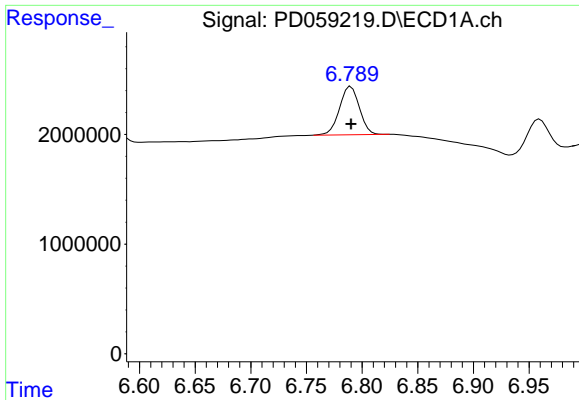
#19 Endosulfan Sulfate
 R.T.: 7.090 min
 Delta R.T.: 0.000 min
 Response: 9020055
 Conc: 5.04 ng/ml



#20 Methoxychlor
 R.T.: 0.000 min
 Exp R.T. : 6.577 min
 Response: 0
 Conc: N.D.

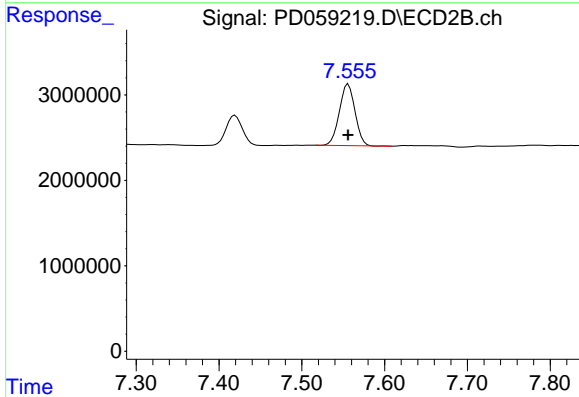


#20 Methoxychlor
 R.T.: 7.419 min
 Delta R.T.: 0.000 min
 Response: 4828151
 Conc: 4.97 ng/ml



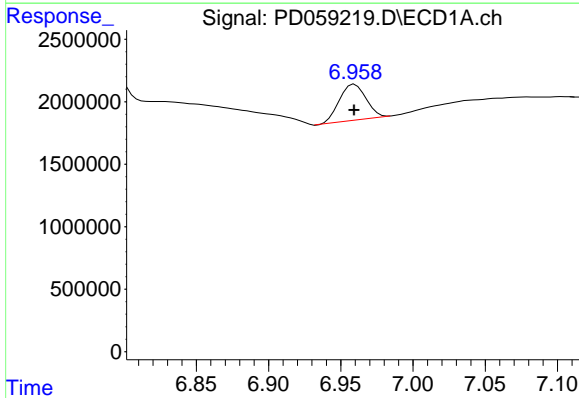
#21 Endrin ketone

R.T.: 6.790 min
Delta R.T.: 0.000 min
Response: 5502707
Conc: 4.91 ng/ml



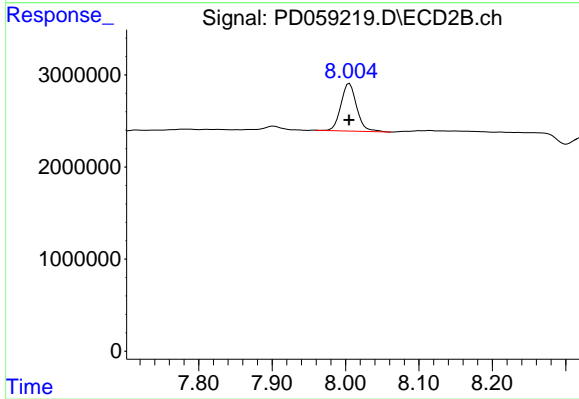
#21 Endrin ketone

R.T.: 7.556 min
Delta R.T.: 0.000 min
Response: 9468476
Conc: 4.78 ng/ml



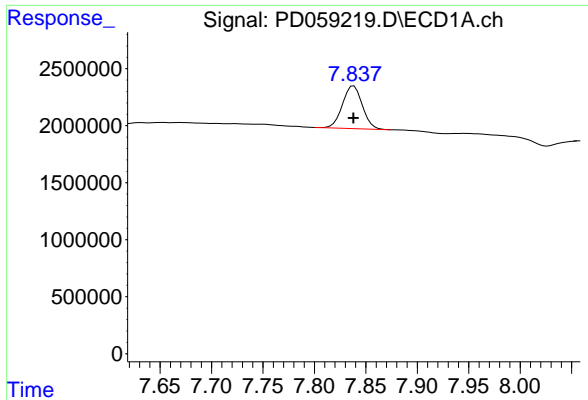
#22 Mirex

R.T.: 6.960 min
Delta R.T.: 0.000 min
Response: 3659825
Conc: 4.98 ng/ml



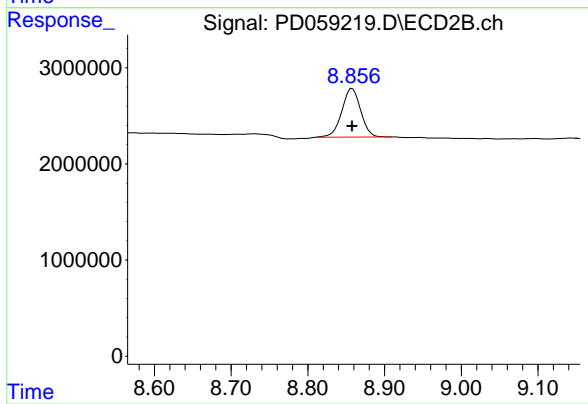
#22 Mirex

R.T.: 8.005 min
Delta R.T.: 0.000 min
Response: 7677959
Conc: 5.51 ng/ml



#28 Decachlorobiphenyl

R.T.: 7.838 min
Delta R.T.: 0.000 min
Response: 5021898
Conc: 5.48 ng/ml



#28 Decachlorobiphenyl

R.T.: 8.858 min
Delta R.T.: 0.000 min
Response: 8677830
Conc: 5.67 ng/ml