

Data Path : Z:\pestpcbsrv\HPCHEM1\ECD\_D\Data\PD091624\  
 Data File : PD085221.D  
 Signal(s) : Signal #1: ECD1A.ch Signal #2: ECD2B.ch  
 Acq On : 16 Sep 2024 15:54  
 Operator : AR\AJ  
 Sample : P3898-17RE  
 Misc :  
 ALS Vial : 23 Sample Multiplier: 1

**Instrument :**

ECD\_D

**ClientSampleId :**

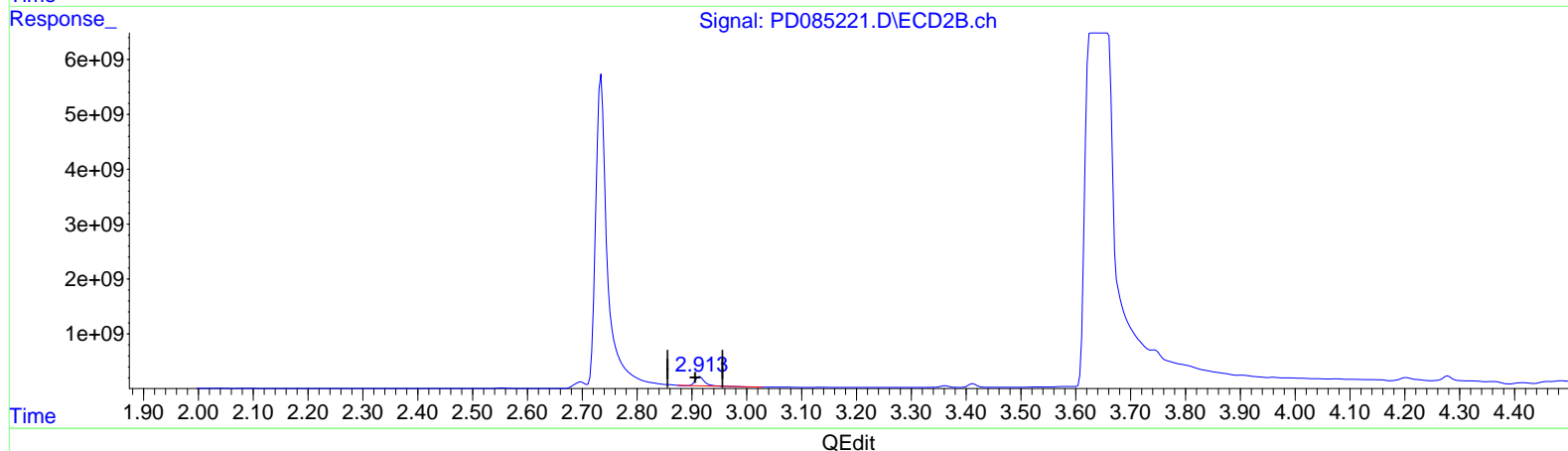
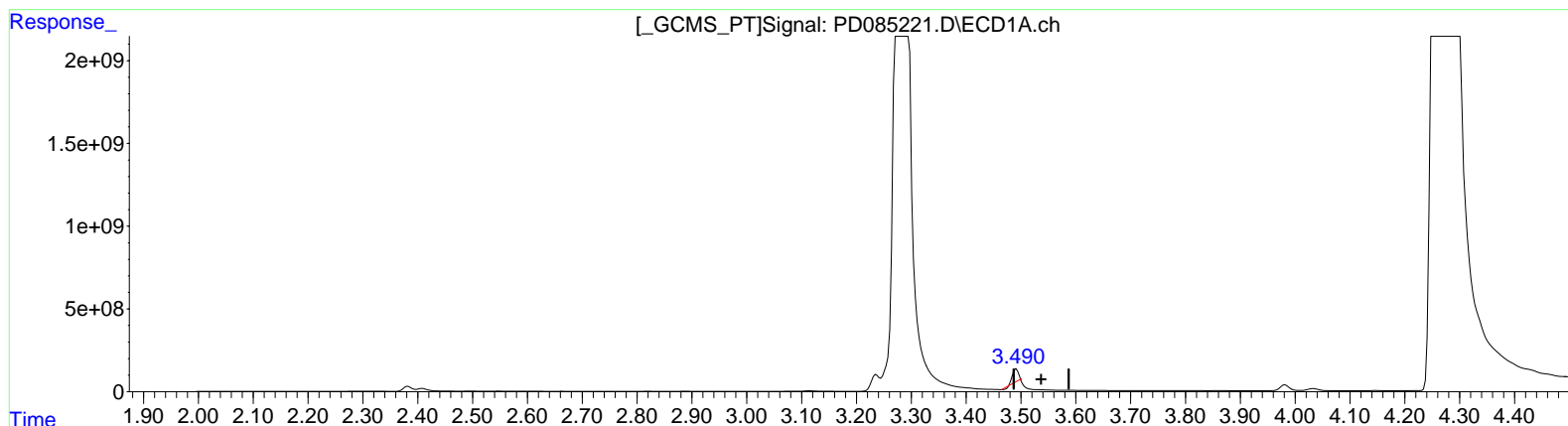
DDC90RE

**Manual IntegrationsAPPROVED**

Reviewed By :Abdul Mirza 09/17/2024  
 Supervised By :Ankita Jodhani 09/17/2024

Integration File signal 1: autoint1.e  
 Integration File signal 2: autoint2.e  
 Quant Time: Sep 17 02:49:41 2024  
 Quant Method : Z:\pestpcbsrv\HPCHEM1\ECD\_D\Method\PD082524CLP.M  
 Quant Title : GC Extractables  
 QLast Update : Tue Aug 27 02:47:48 2024  
 Response via : Initial Calibration  
 Integrator: ChemStation

Volume Inj. : 1 µl  
 Signal #1 Phase : ZB-MR1 Signal #2 Phase: ZB-MR2  
 Signal #1 Info : 30M x 0.32mm x0.5 Signal #2 Info : 30M x 0.32mm x 0.25µm



(1) Tetrachloro-m-xylene (SA)

3.492min 530.100 ng/ml

response 536145020

(1) Tetrachloro-m-xylene #2 (SA)

2.914min 534.996 ng/ml

response 1893250909

Data Path : Z:\pestpcbsrv\HPCHEM1\ECD\_D\Data\PD091624\  
 Data File : PD085221.D  
 Signal(s) : Signal #1: ECD1A.ch Signal #2: ECD2B.ch  
 Acq On : 16 Sep 2024 15:54  
 Operator : AR\AJ  
 Sample : P3898-17RE  
 Misc :  
 ALS Vial : 23 Sample Multiplier: 1

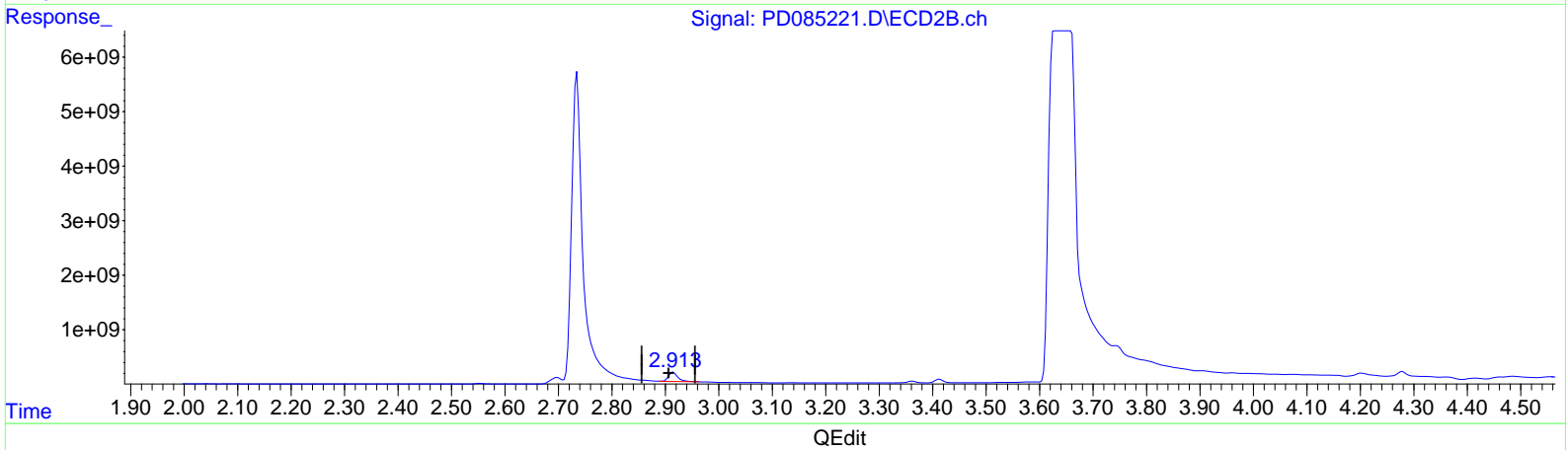
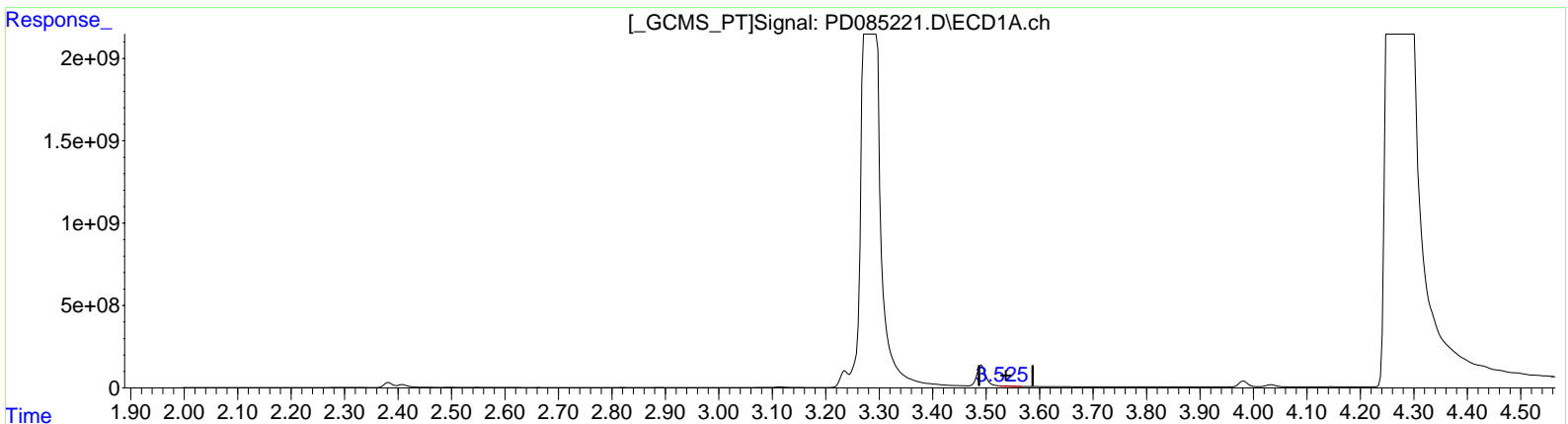
**Instrument :**  
 ECD\_D  
**ClientSampleId :**  
 DDC90RE

**Manual IntegrationsAPPROVED**

Reviewed By :Abdul Mirza 09/17/2024  
 Supervised By :Ankita Jodhani 09/17/2024

Integration File signal 1: autoint1.e  
 Integration File signal 2: autoint2.e  
 Quant Time: Sep 17 02:49:41 2024  
 Quant Method : Z:\pestpcbsrv\HPCHEM1\ECD\_D\Method\PD082524CLP.M  
 Quant Title : GC Extractables  
 QLast Update : Tue Aug 27 02:47:48 2024  
 Response via : Initial Calibration  
 Integrator: ChemStation

Volume Inj. : 1 µl  
 Signal #1 Phase : ZB-MR1 Signal #2 Phase: ZB-MR2  
 Signal #1 Info : 30M x 0.32mm x0.5 Signal #2 Info : 30M x 0.32mm x 0.25µm



(1) Tetrachloro-m-xylene (SA)  
 3.525min 29.251 ng/ml m  
 response 29584083

(1) Tetrachloro-m-xylene #2 (SA)  
 2.913min 589.908 ng/ml m  
 response 2087574034

Data Path : Z:\pestpcbsrv\HPCHEM1\ECD\_D\Data\PD091624\  
 Data File : PD085221.D  
 Signal(s) : Signal #1: ECD1A.ch Signal #2: ECD2B.ch  
 Acq On : 16 Sep 2024 15:54  
 Operator : AR\AJ  
 Sample : P3898-17RE  
 Misc :  
 ALS Vial : 23 Sample Multiplier: 1

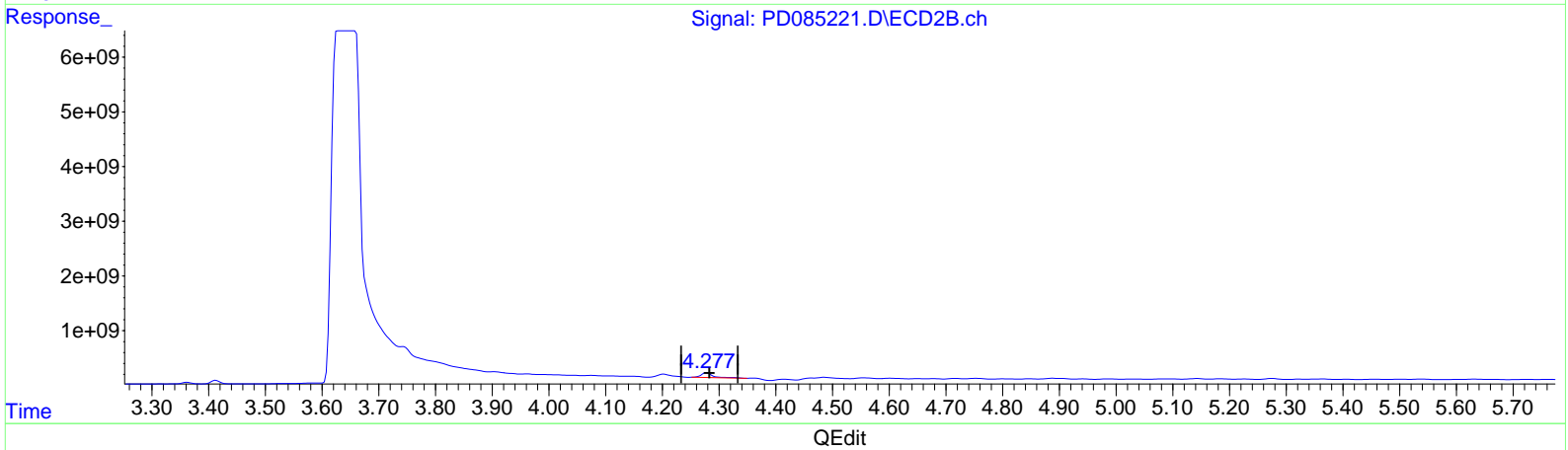
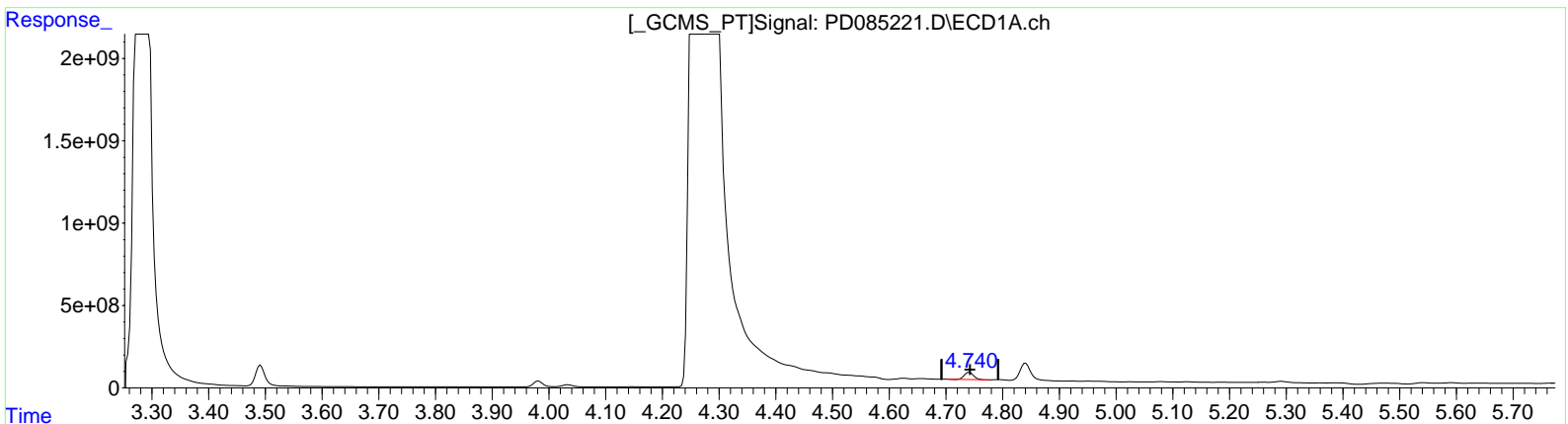
**Instrument :**  
 ECD\_D  
**ClientSampleId :**  
 DDC90RE

**Manual IntegrationsAPPROVED**

Reviewed By :Abdul Mirza 09/17/2024  
 Supervised By :Ankita Jodhani 09/17/2024

Integration File signal 1: autoint1.e  
 Integration File signal 2: autoint2.e  
 Quant Time: Sep 17 02:49:41 2024  
 Quant Method : Z:\pestpcbsrv\HPCHEM1\ECD\_D\Method\PD082524CLP.M  
 Quant Title : GC Extractables  
 QLast Update : Tue Aug 27 02:47:48 2024  
 Response via : Initial Calibration  
 Integrator: ChemStation

Volume Inj. : 1 µl  
 Signal #1 Phase : ZB-MR1 Signal #2 Phase: ZB-MR2  
 Signal #1 Info : 30M x 0.32mm x0.5 Signal #2 Info : 30M x 0.32mm x 0.25µm



(7) delta-BHC (B)  
 4.742min 310.904 ng/ml  
 response 509883585

(7) delta-BHC #2 (B)  
 4.278min 261.404 ng/ml  
 response 1297644272

Data Path : Z:\pestpcbsrv\HPCHEM1\ECD\_D\Data\PD091624\  
 Data File : PD085221.D  
 Signal(s) : Signal #1: ECD1A.ch Signal #2: ECD2B.ch  
 Acq On : 16 Sep 2024 15:54  
 Operator : AR\AJ  
 Sample : P3898-17RE  
 Misc :  
 ALS Vial : 23 Sample Multiplier: 1

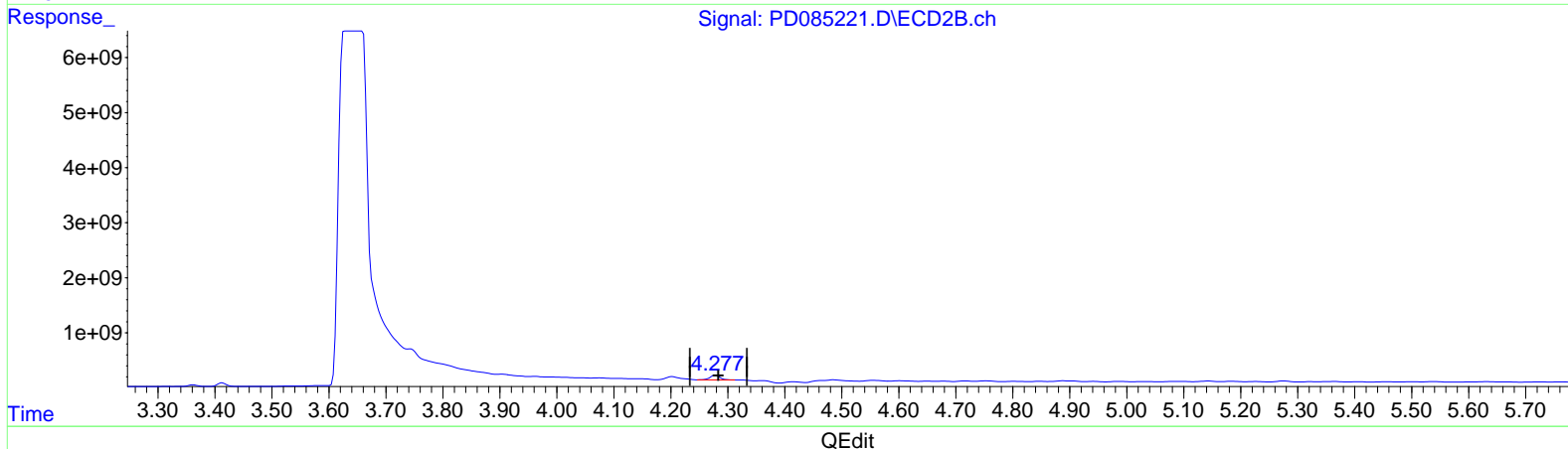
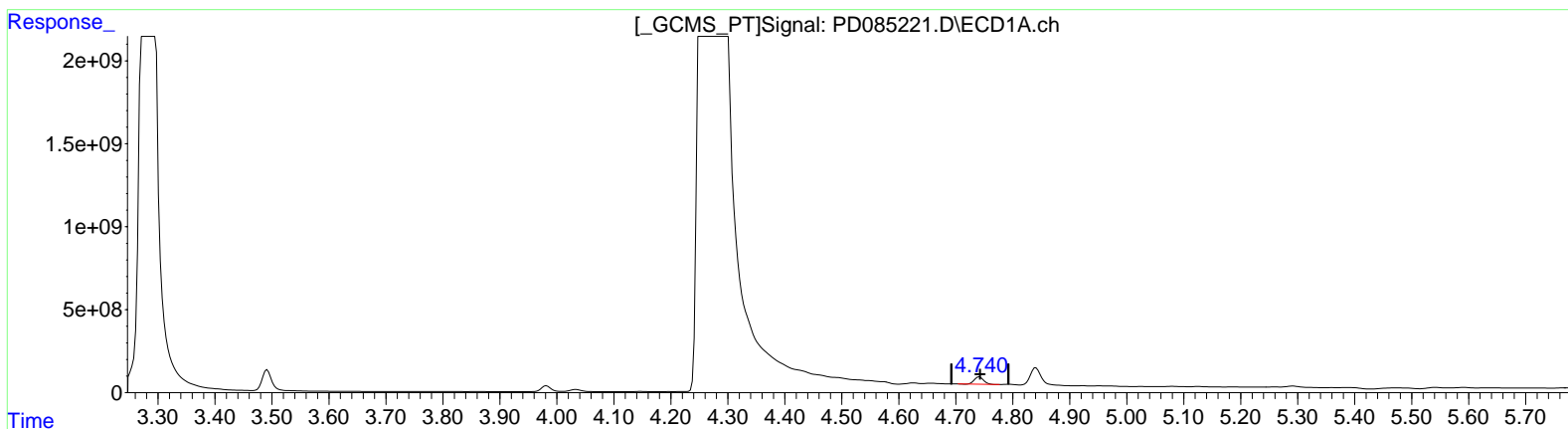
Instrument :  
 ECD\_D  
 ClientSampleId :  
 DDC90RE

Manual Integrations APPROVED

Reviewed By : Abdul Mirza 09/17/2024  
 Supervised By : Ankita Jodhani 09/17/2024

Integration File signal 1: autoint1.e  
 Integration File signal 2: autoint2.e  
 Quant Time: Sep 17 02:49:41 2024  
 Quant Method : Z:\pestpcbsrv\HPCHEM1\ECD\_D\Method\PD082524CLP.M  
 Quant Title : GC Extractables  
 QLast Update : Tue Aug 27 02:47:48 2024  
 Response via : Initial Calibration  
 Integrator: ChemStation

Volume Inj. : 1 µl  
 Signal #1 Phase : ZB-MR1 Signal #2 Phase: ZB-MR2  
 Signal #1 Info : 30M x 0.32mm x 0.5 Signal #2 Info : 30M x 0.32mm x 0.25µm



(7) delta-BHC (B)  
 4.742min 310.904 ng/ml  
 response 509883585

(7) delta-BHC #2 (B)  
 4.277min 212.198 ng/ml m  
 response 1053381090

Data Path : Z:\pestpcbsrv\HPCHEM1\ECD\_D\Data\PD091624\  
 Data File : PD085221.D  
 Signal(s) : Signal #1: ECD1A.ch Signal #2: ECD2B.ch  
 Acq On : 16 Sep 2024 15:54  
 Operator : AR\AJ  
 Sample : P3898-17RE  
 Misc :  
 ALS Vial : 23 Sample Multiplier: 1

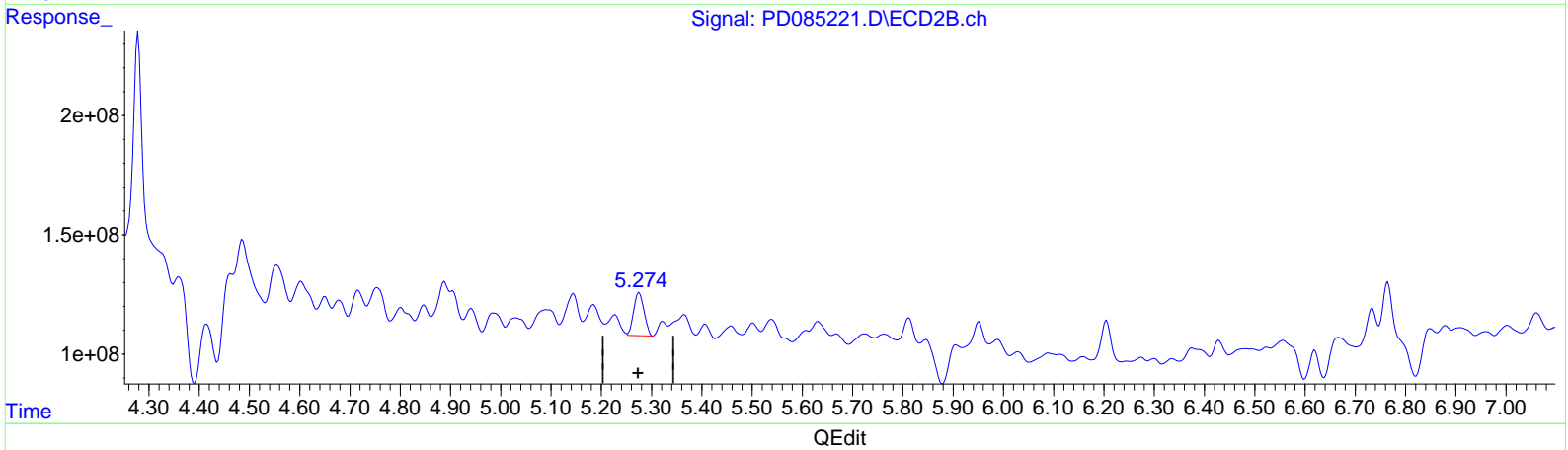
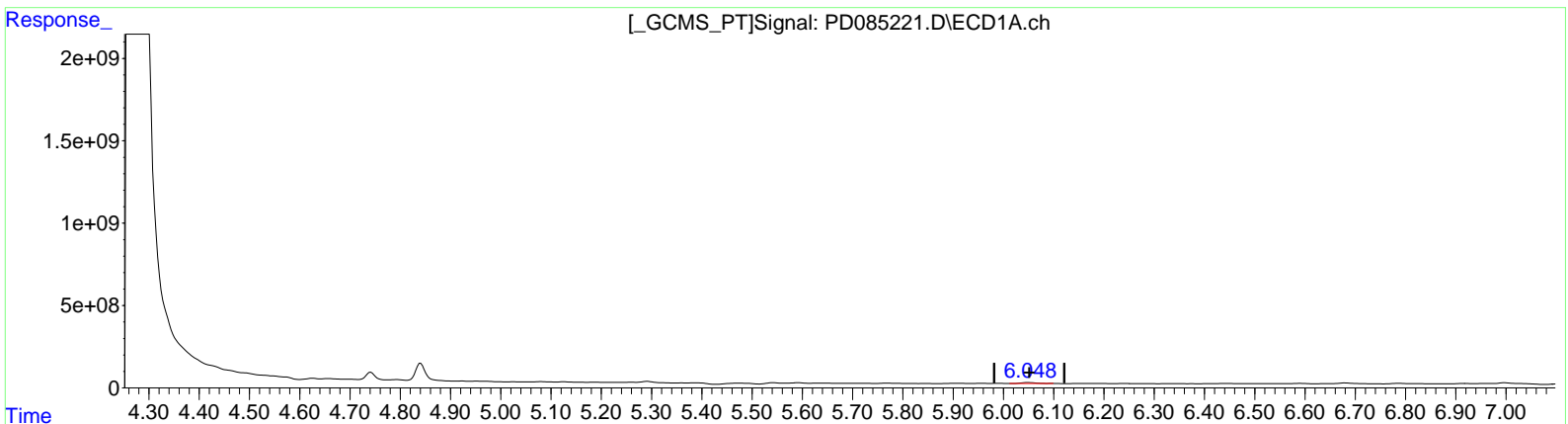
**Instrument :**  
 ECD\_D  
**ClientSampleId :**  
 DDC90RE

**Manual IntegrationsAPPROVED**

Reviewed By :Abdul Mirza 09/17/2024  
 Supervised By :Ankita Jodhani 09/17/2024

Integration File signal 1: autoint1.e  
 Integration File signal 2: autoint2.e  
 Quant Time: Sep 17 02:49:41 2024  
 Quant Method : Z:\pestpcbsrv\HPCHEM1\ECD\_D\Method\PD082524CLP.M  
 Quant Title : GC Extractables  
 QLast Update : Tue Aug 27 02:47:48 2024  
 Response via : Initial Calibration  
 Integrator: ChemStation

Volume Inj. : 1 µl  
 Signal #1 Phase : ZB-MR1 Signal #2 Phase: ZB-MR2  
 Signal #1 Info : 30M x 0.32mm x0.5 Signal #2 Info : 30M x 0.32mm x 0.25µm



(9) Endosulfan I (A)  
 6.050min 73.859 ng/ml  
 response 101614741

(9) Endosulfan I #2 (A)  
 5.275min 67.089 ng/ml  
 response 257170717

Data Path : Z:\pestpcbsrv\HPCHEM1\ECD\_D\Data\PD091624\  
 Data File : PD085221.D  
 Signal(s) : Signal #1: ECD1A.ch Signal #2: ECD2B.ch  
 Acq On : 16 Sep 2024 15:54  
 Operator : AR\AJ  
 Sample : P3898-17RE  
 Misc :  
 ALS Vial : 23 Sample Multiplier: 1

**Instrument :**

ECD\_D

**ClientSampleId :**

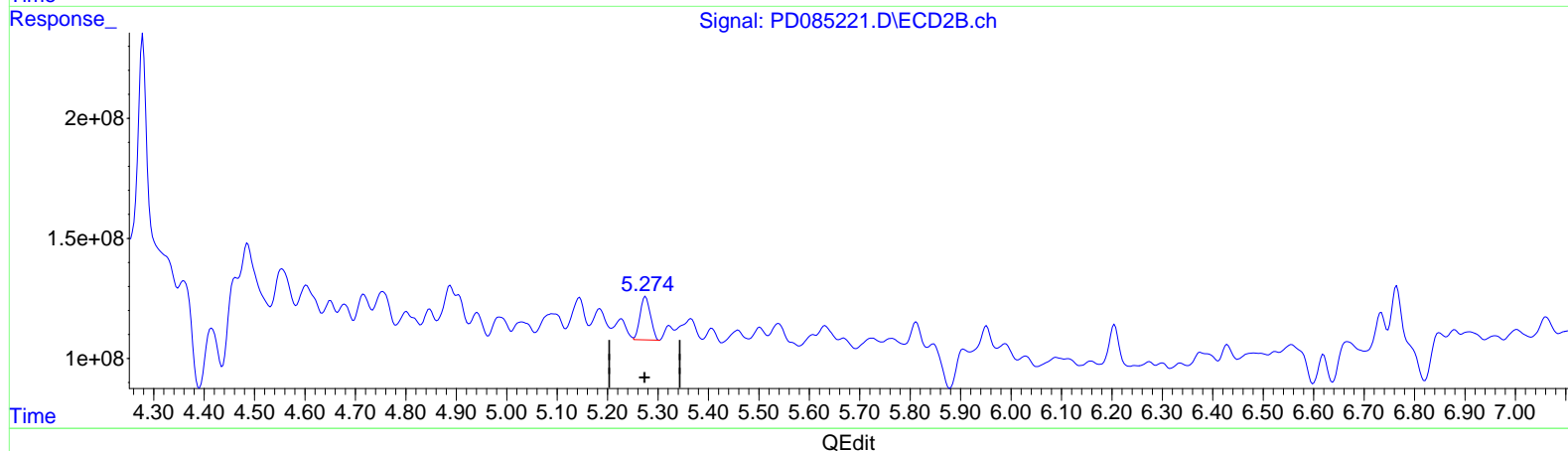
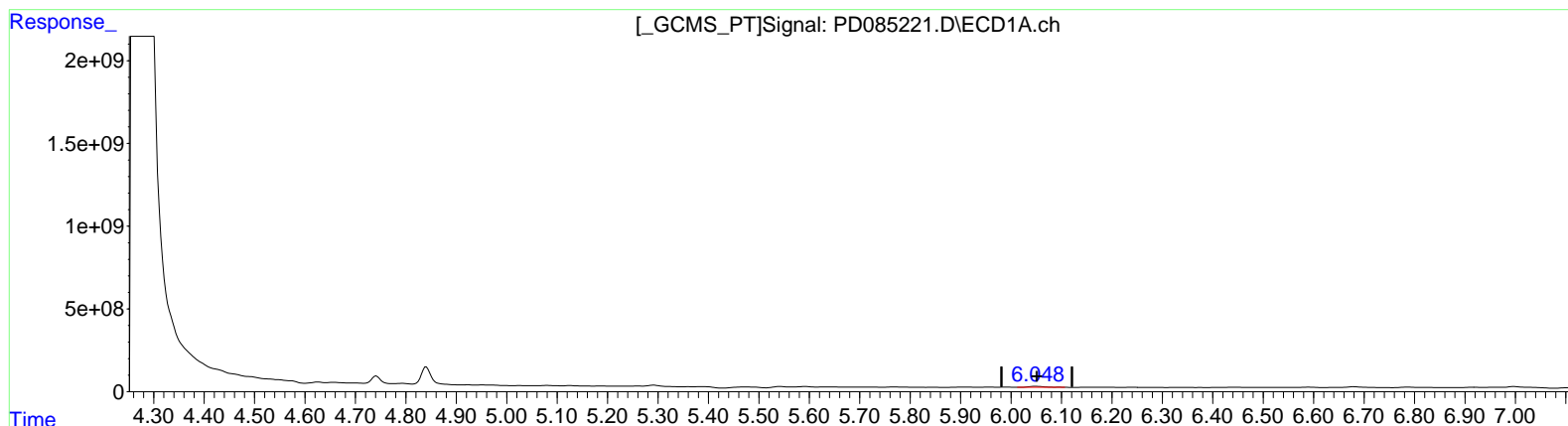
DDC90RE

**Manual IntegrationsAPPROVED**

Reviewed By :Abdul Mirza 09/17/2024  
 Supervised By :Ankita Jodhani 09/17/2024

Integration File signal 1: autoint1.e  
 Integration File signal 2: autoint2.e  
 Quant Time: Sep 17 02:49:41 2024  
 Quant Method : Z:\pestpcbsrv\HPCHEM1\ECD\_D\Method\PD082524CLP.M  
 Quant Title : GC Extractables  
 QLast Update : Tue Aug 27 02:47:48 2024  
 Response via : Initial Calibration  
 Integrator: ChemStation

Volume Inj. : 1 µl  
 Signal #1 Phase : ZB-MR1 Signal #2 Phase: ZB-MR2  
 Signal #1 Info : 30M x 0.32mm x0.5 Signal #2 Info : 30M x 0.32mm x 0.25µm



(9) Endosulfan I (A)  
 6.048min 90.403 ng/ml m  
 response 124375989

(9) Endosulfan I #2 (A)  
 5.275min 67.089 ng/ml  
 response 257170717

Data Path : Z:\pestpcbsrv\HPCHEM1\ECD\_D\Data\PD091624\  
 Data File : PD085221.D  
 Signal(s) : Signal #1: ECD1A.ch Signal #2: ECD2B.ch  
 Acq On : 16 Sep 2024 15:54  
 Operator : AR\AJ  
 Sample : P3898-17RE  
 Misc :  
 ALS Vial : 23 Sample Multiplier: 1

**Instrument :**

ECD\_D

**ClientSampleId :**

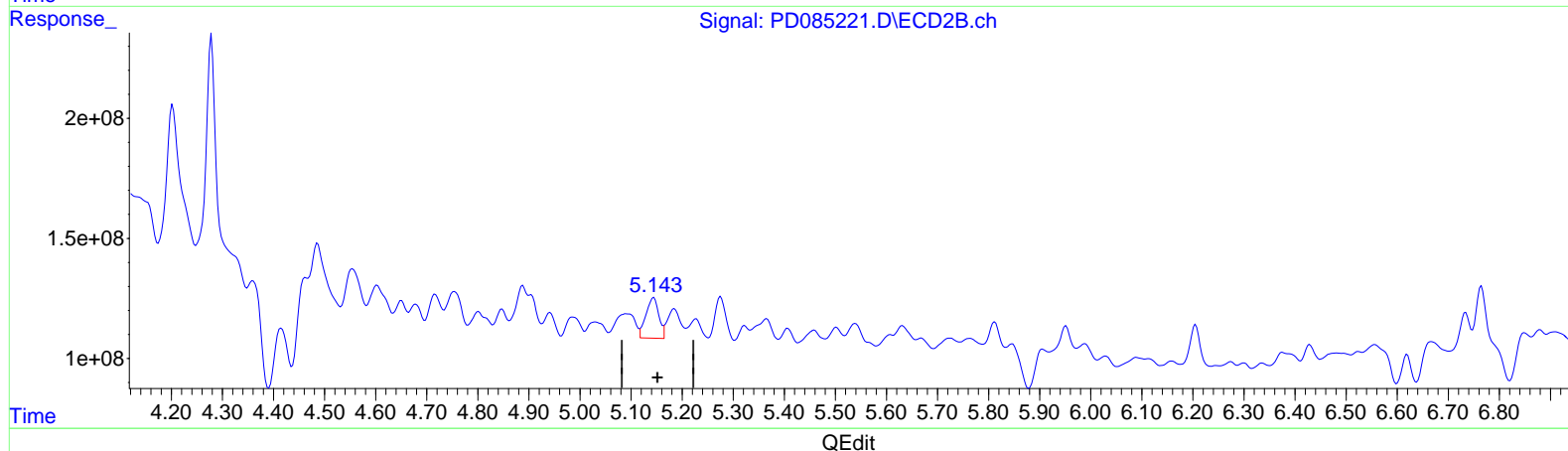
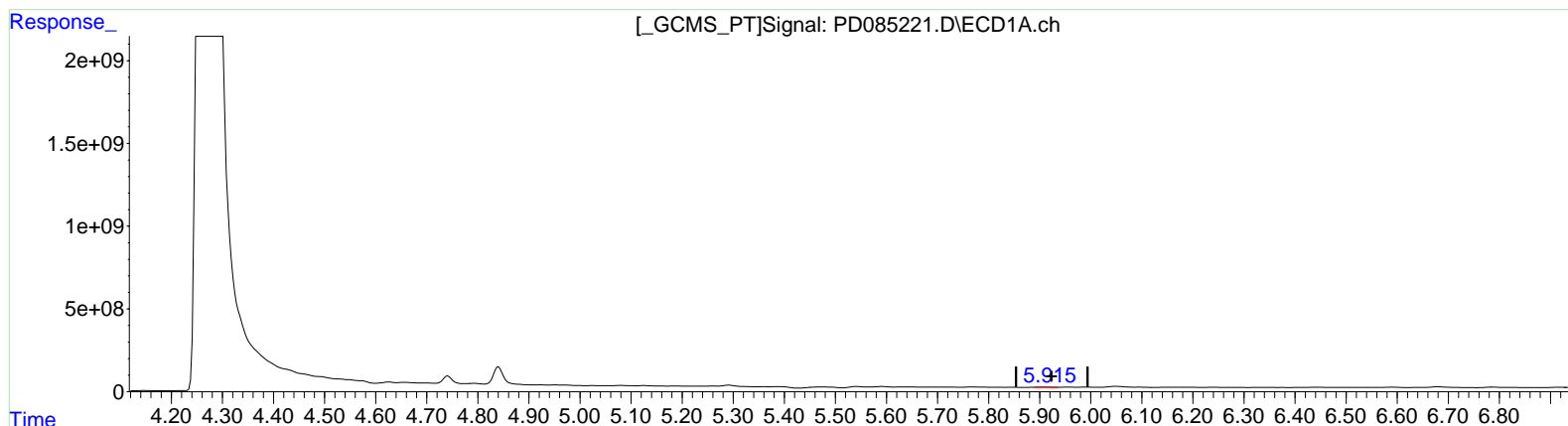
DDC90RE

**Manual IntegrationsAPPROVED**

Reviewed By :Abdul Mirza 09/17/2024  
 Supervised By :Ankita Jodhani 09/17/2024

Integration File signal 1: autoint1.e  
 Integration File signal 2: autoint2.e  
 Quant Time: Sep 17 02:49:41 2024  
 Quant Method : Z:\pestpcbsrv\HPCHEM1\ECD\_D\Method\PD082524CLP.M  
 Quant Title : GC Extractables  
 QLast Update : Tue Aug 27 02:47:48 2024  
 Response via : Initial Calibration  
 Integrator: ChemStation

Volume Inj. : 1 µl  
 Signal #1 Phase : ZB-MR1 Signal #2 Phase: ZB-MR2  
 Signal #1 Info : 30M x 0.32mm x0.5 Signal #2 Info : 30M x 0.32mm x 0.25µm



(10) trans-Chlordane (B)

5.915min 10.838 ng/ml

response 15285342

(10) trans-Chlordane #2 (B)

5.144min 71.771 ng/ml

response 295205550

Data Path : Z:\pestpcbsrv\HPCHEM1\ECD\_D\Data\PD091624\  
 Data File : PD085221.D  
 Signal(s) : Signal #1: ECD1A.ch Signal #2: ECD2B.ch  
 Acq On : 16 Sep 2024 15:54  
 Operator : AR\AJ  
 Sample : P3898-17RE  
 Misc :  
 ALS Vial : 23 Sample Multiplier: 1

**Instrument :**

ECD\_D

**ClientSampleId :**

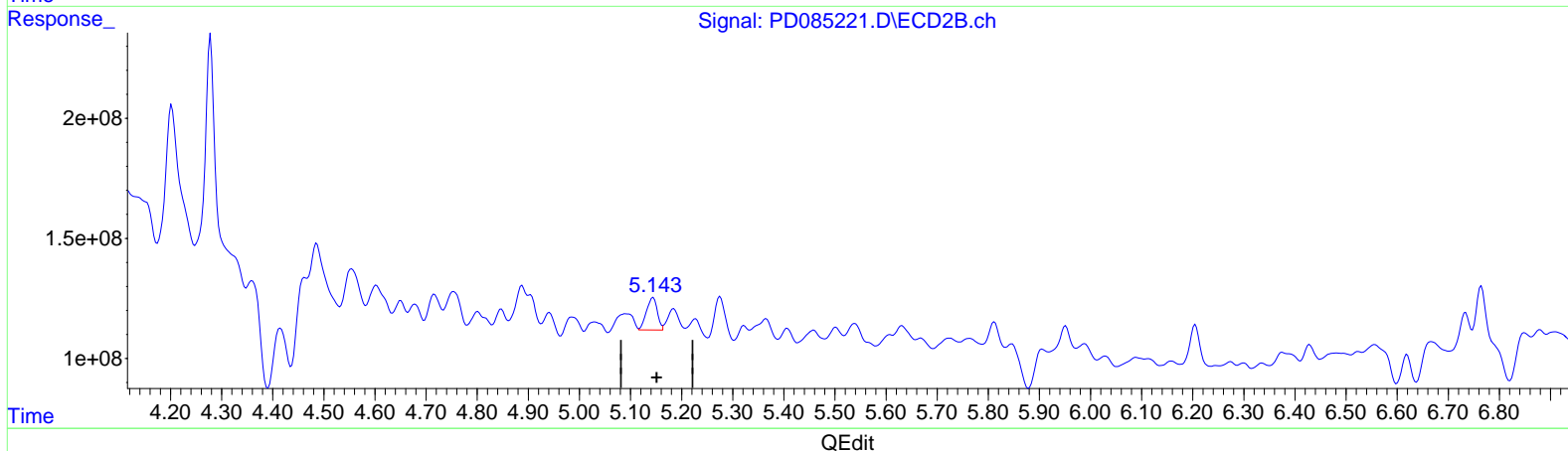
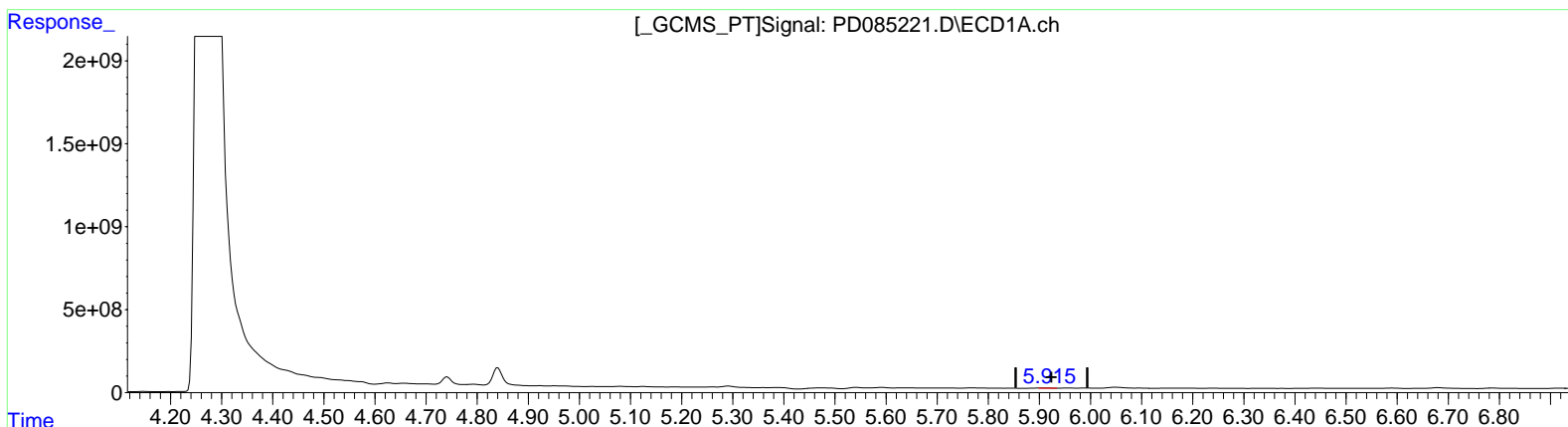
DDC90RE

**Manual IntegrationsAPPROVED**

Reviewed By :Abdul Mirza 09/17/2024  
 Supervised By :Ankita Jodhani 09/17/2024

Integration File signal 1: autoint1.e  
 Integration File signal 2: autoint2.e  
 Quant Time: Sep 17 02:49:41 2024  
 Quant Method : Z:\pestpcbsrv\HPCHEM1\ECD\_D\Method\PD082524CLP.M  
 Quant Title : GC Extractables  
 QLast Update : Tue Aug 27 02:47:48 2024  
 Response via : Initial Calibration  
 Integrator: ChemStation

Volume Inj. : 1 µl  
 Signal #1 Phase : ZB-MR1 Signal #2 Phase: ZB-MR2  
 Signal #1 Info : 30M x 0.32mm x0.5 Signal #2 Info : 30M x 0.32mm x 0.25µm



(10) trans-Chlordane (B)  
 5.915min 12.494 ng/ml m  
 response 17620949

(10) trans-Chlordane #2 (B)  
 5.143min 47.938 ng/ml m  
 response 197175466



Data Path : Z:\pestpcbsrv\HPCHEM1\ECD\_D\Data\PD091624\  
 Data File : PD085221.D  
 Signal(s) : Signal #1: ECD1A.ch Signal #2: ECD2B.ch  
 Acq On : 16 Sep 2024 15:54  
 Operator : AR\AJ  
 Sample : P3898-17RE  
 Misc :  
 ALS Vial : 23 Sample Multiplier: 1

**Instrument :**

ECD\_D

**ClientSampleId :**

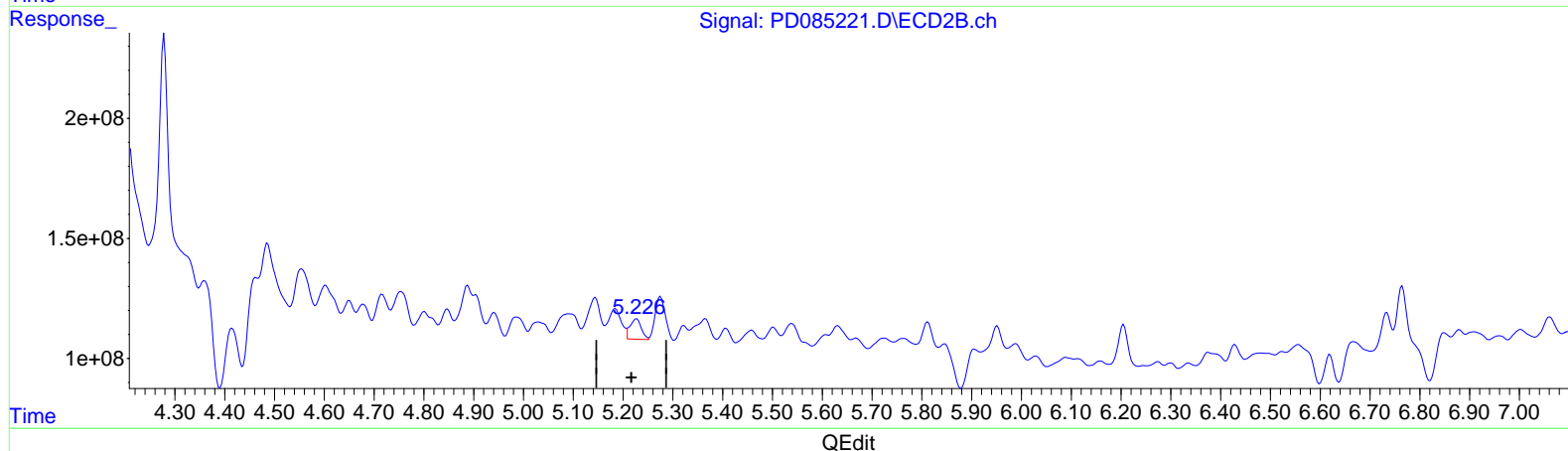
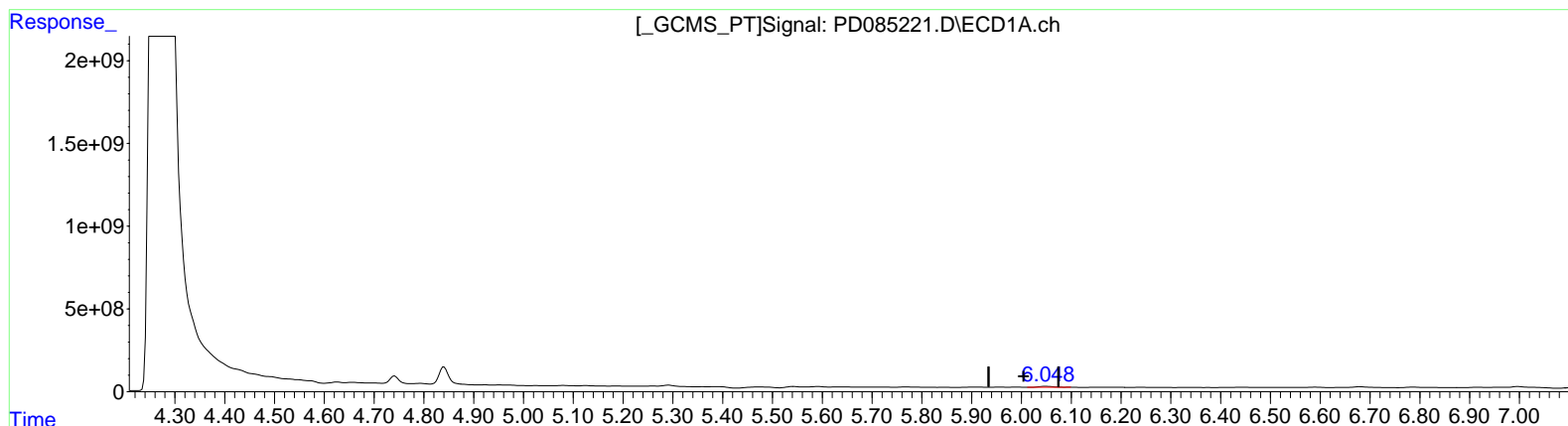
DDC90RE

**Manual IntegrationsAPPROVED**

Reviewed By :Abdul Mirza 09/17/2024  
 Supervised By :Ankita Jodhani 09/17/2024

Integration File signal 1: autoint1.e  
 Integration File signal 2: autoint2.e  
 Quant Time: Sep 17 02:49:41 2024  
 Quant Method : Z:\pestpcbsrv\HPCHEM1\ECD\_D\Method\PD082524CLP.M  
 Quant Title : GC Extractables  
 QLast Update : Tue Aug 27 02:47:48 2024  
 Response via : Initial Calibration  
 Integrator: ChemStation

Volume Inj. : 1 µl  
 Signal #1 Phase : ZB-MR1 Signal #2 Phase: ZB-MR2  
 Signal #1 Info : 30M x 0.32mm x0.5 Signal #2 Info : 30M x 0.32mm x 0.25µm



(11) cis-Chlordane (B)  
 6.050min 68.726 ng/ml  
 response 101614741

(11) cis-Chlordane #2 (B)  
 5.227min 32.275 ng/ml  
 response 135413588

Data Path : Z:\pestpcbsrv\HPCHEM1\ECD\_D\Data\PD091624\  
 Data File : PD085221.D  
 Signal(s) : Signal #1: ECD1A.ch Signal #2: ECD2B.ch  
 Acq On : 16 Sep 2024 15:54  
 Operator : AR\AJ  
 Sample : P3898-17RE  
 Misc :  
 ALS Vial : 23 Sample Multiplier: 1

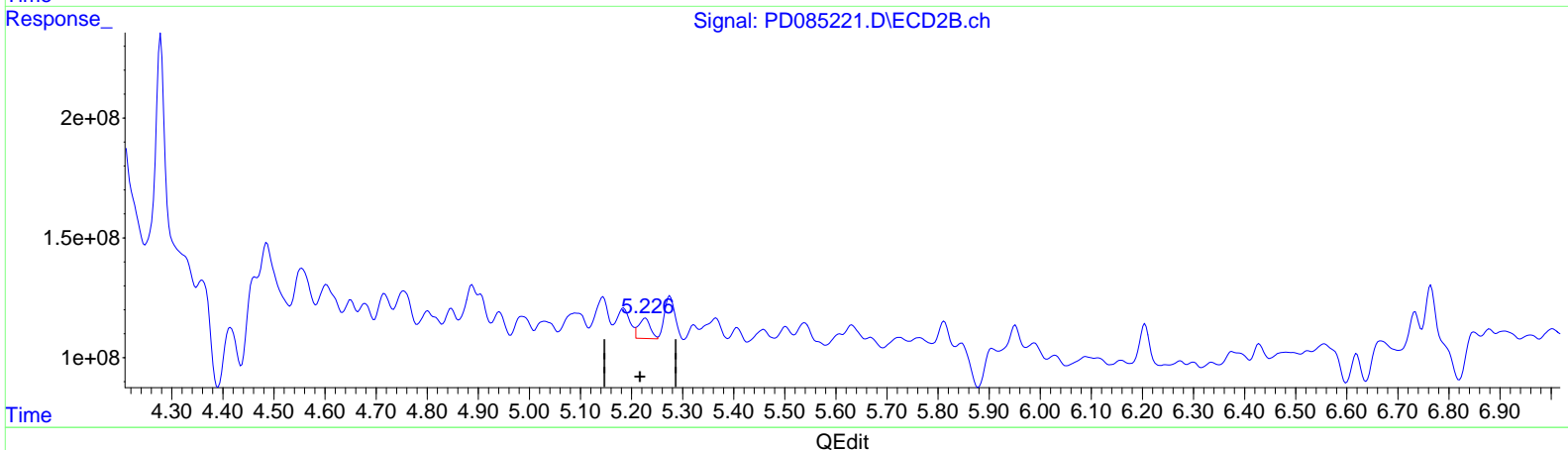
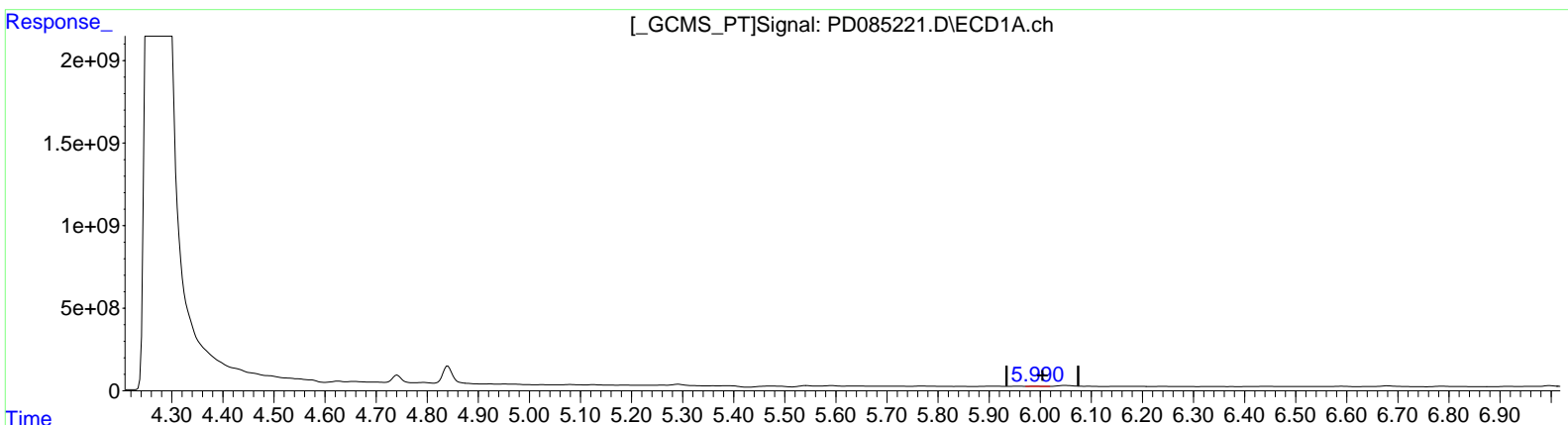
**Instrument :**  
 ECD\_D  
**ClientSampleId :**  
 DDC90RE

**Manual IntegrationsAPPROVED**

Reviewed By :Abdul Mirza 09/17/2024  
 Supervised By :Ankita Jodhani 09/17/2024

Integration File signal 1: autoint1.e  
 Integration File signal 2: autoint2.e  
 Quant Time: Sep 17 02:49:41 2024  
 Quant Method : Z:\pestpcbsrv\HPCHEM1\ECD\_D\Method\PD082524CLP.M  
 Quant Title : GC Extractables  
 QLast Update : Tue Aug 27 02:47:48 2024  
 Response via : Initial Calibration  
 Integrator: ChemStation

Volume Inj. : 1 µl  
 Signal #1 Phase : ZB-MR1 Signal #2 Phase: ZB-MR2  
 Signal #1 Info : 30M x 0.32mm x0.5 Signal #2 Info : 30M x 0.32mm x 0.25µm



(11) cis-Chlordane (B)  
 5.990min 13.712 ng/ml m  
 response 20273923

(11) cis-Chlordane #2 (B)  
 5.227min 32.275 ng/ml  
 response 135413588

Data Path : Z:\pestpcbsrv\HPCHEM1\ECD\_D\Data\PD091624\  
 Data File : PD085221.D  
 Signal(s) : Signal #1: ECD1A.ch Signal #2: ECD2B.ch  
 Acq On : 16 Sep 2024 15:54  
 Operator : AR\AJ  
 Sample : P3898-17RE  
 Misc :  
 ALS Vial : 23 Sample Multiplier: 1

**Instrument :**

ECD\_D

**ClientSampleId :**

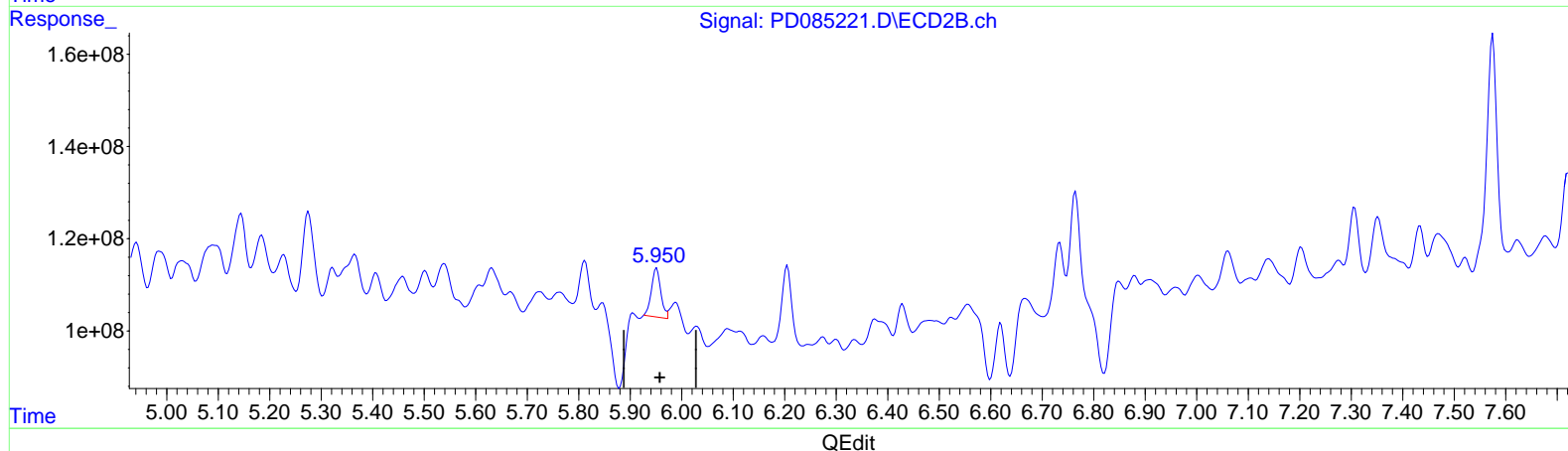
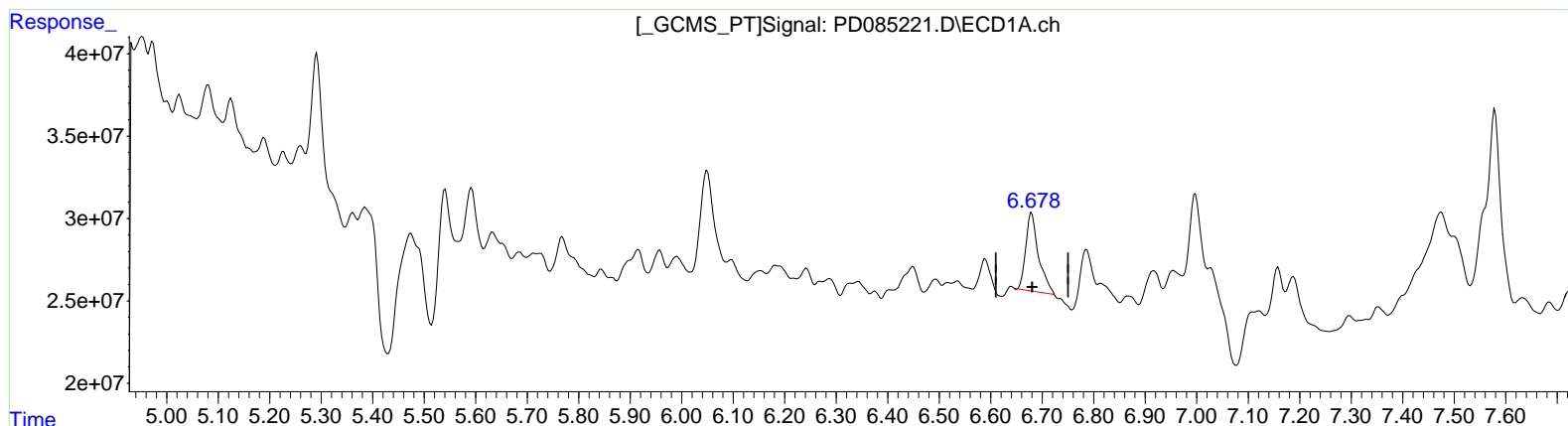
DDC90RE

**Manual IntegrationsAPPROVED**

Reviewed By :Abdul Mirza 09/17/2024  
 Supervised By :Ankita Jodhani 09/17/2024

Integration File signal 1: autoint1.e  
 Integration File signal 2: autoint2.e  
 Quant Time: Sep 17 02:49:41 2024  
 Quant Method : Z:\pestpcbsrv\HPCHEM1\ECD\_D\Method\PD082524CLP.M  
 Quant Title : GC Extractables  
 QLast Update : Tue Aug 27 02:47:48 2024  
 Response via : Initial Calibration  
 Integrator: ChemStation

Volume Inj. : 1 µl  
 Signal #1 Phase : ZB-MR1 Signal #2 Phase: ZB-MR2  
 Signal #1 Info : 30M x 0.32mm x0.5 Signal #2 Info : 30M x 0.32mm x 0.25µm



(16) 4,4'-DDD (A)  
 6.680min 81.367 ng/ml  
 response 80338089

(16) 4,4'-DDD #2 (A)  
 5.952min 39.553 ng/ml  
 response 134226500

Data Path : Z:\pestpcbsrv\HPCHEM1\ECD\_D\Data\PD091624\  
 Data File : PD085221.D  
 Signal(s) : Signal #1: ECD1A.ch Signal #2: ECD2B.ch  
 Acq On : 16 Sep 2024 15:54  
 Operator : AR\AJ  
 Sample : P3898-17RE  
 Misc :  
 ALS Vial : 23 Sample Multiplier: 1

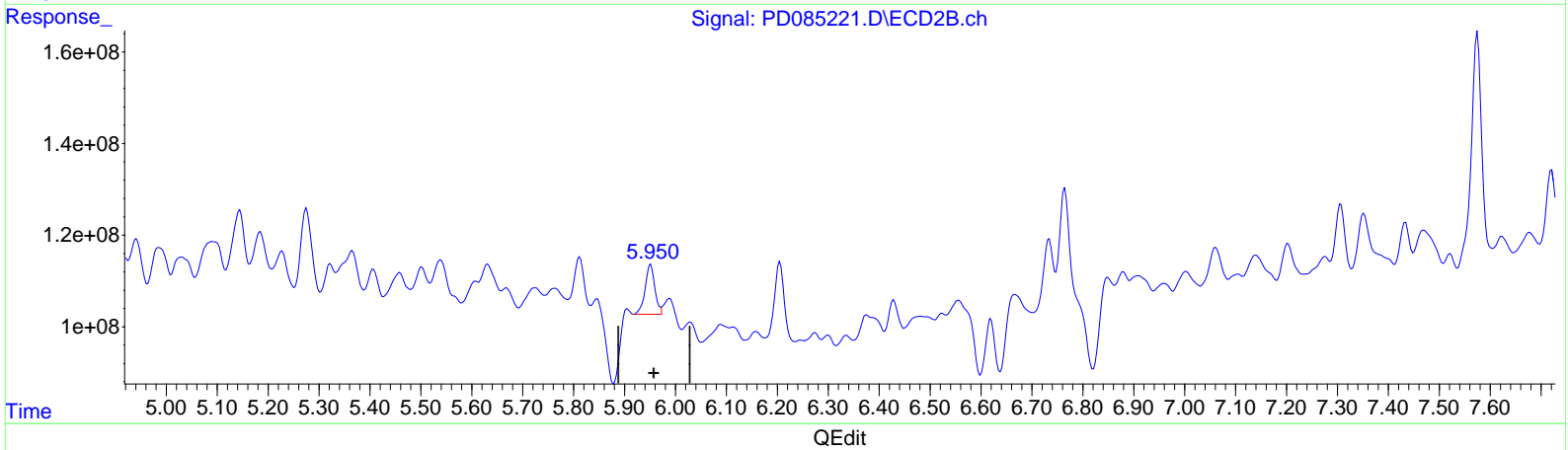
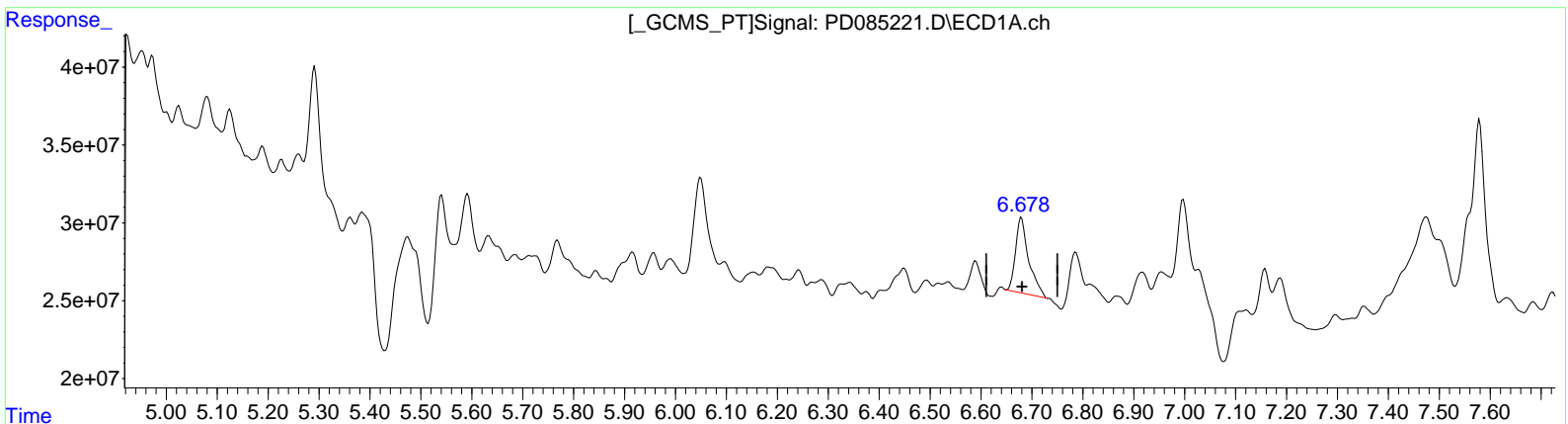
**Instrument :**  
 ECD\_D  
**ClientSampleId :**  
 DDC90RE

**Manual Integrations APPROVED**

Reviewed By : Abdul Mirza 09/17/2024  
 Supervised By : Ankita Jodhani 09/17/2024

Integration File signal 1: autoint1.e  
 Integration File signal 2: autoint2.e  
 Quant Time: Sep 17 02:49:41 2024  
 Quant Method : Z:\pestpcbsrv\HPCHEM1\ECD\_D\Method\PD082524CLP.M  
 Quant Title : GC Extractables  
 QLast Update : Tue Aug 27 02:47:48 2024  
 Response via : Initial Calibration  
 Integrator: ChemStation

Volume Inj. : 1 µl  
 Signal #1 Phase : ZB-MR1 Signal #2 Phase: ZB-MR2  
 Signal #1 Info : 30M x 0.32mm x0.5 Signal #2 Info : 30M x 0.32mm x 0.25µm



(16) 4,4'-DDD (A)  
 6.678min 87.874 ng/ml m  
 response 86762731

(16) 4,4'-DDD #2 (A)  
 5.950min 42.680 ng/ml m  
 response 144836213

Data Path : Z:\pestpcbsrv\HPCHEM1\ECD\_D\Data\PD091624\  
 Data File : PD085221.D  
 Signal(s) : Signal #1: ECD1A.ch Signal #2: ECD2B.ch  
 Acq On : 16 Sep 2024 15:54  
 Operator : AR\AJ  
 Sample : P3898-17RE  
 Misc :  
 ALS Vial : 23 Sample Multiplier: 1

**Instrument :**

ECD\_D

**ClientSampleId :**

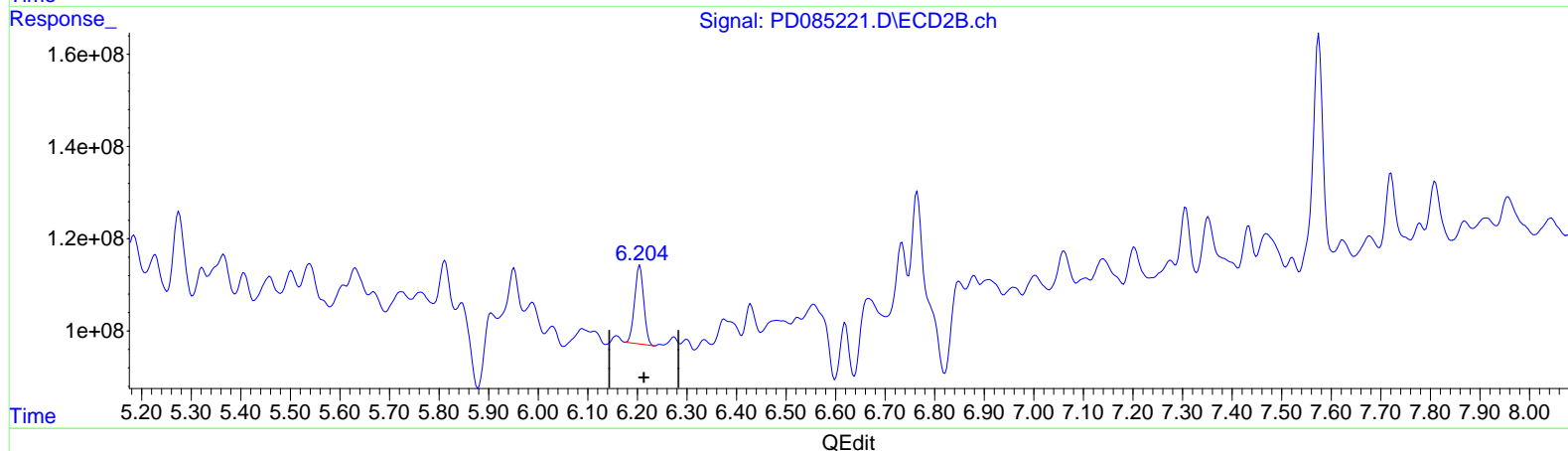
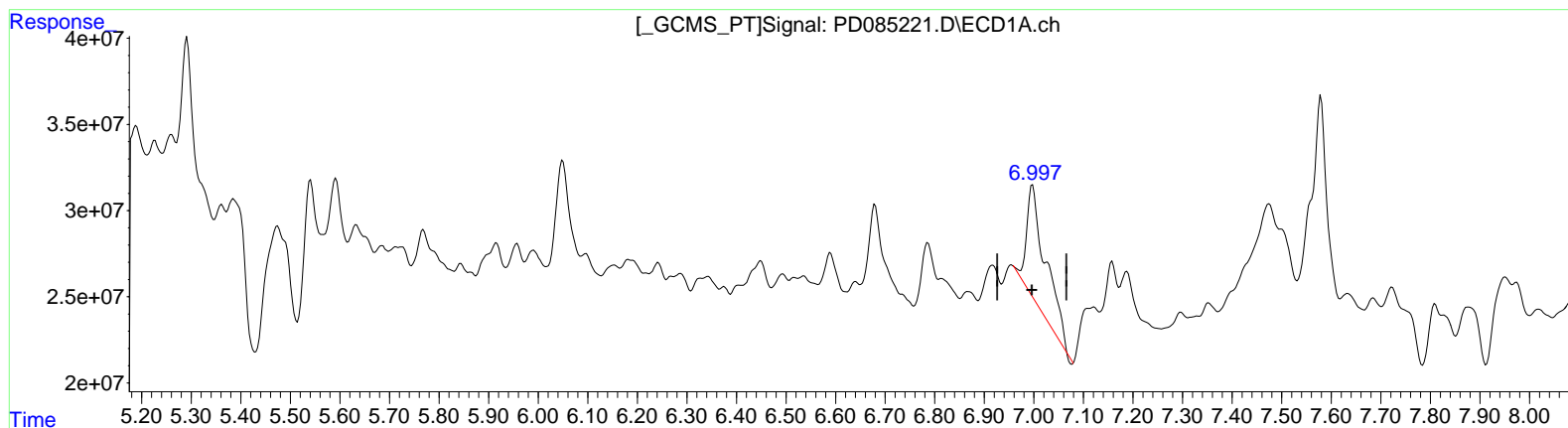
DDC90RE

**Manual IntegrationsAPPROVED**

Reviewed By :Abdul Mirza 09/17/2024  
 Supervised By :Ankita Jodhani 09/17/2024

Integration File signal 1: autoint1.e  
 Integration File signal 2: autoint2.e  
 Quant Time: Sep 17 02:49:41 2024  
 Quant Method : Z:\pestpcbsrv\HPCHEM1\ECD\_D\Method\PD082524CLP.M  
 Quant Title : GC Extractables  
 QLast Update : Tue Aug 27 02:47:48 2024  
 Response via : Initial Calibration  
 Integrator: ChemStation

Volume Inj. : 1 µl  
 Signal #1 Phase : ZB-MR1 Signal #2 Phase: ZB-MR2  
 Signal #1 Info : 30M x 0.32mm x0.5 Signal #2 Info : 30M x 0.32mm x 0.25µm



(17) 4,4'-DDT (MA)  
 6.998min 177.193 ng/ml  
 response 158610161

(17) 4,4'-DDT #2 (MA)  
 6.205min 67.987 ng/ml  
 response 217484314

Data Path : Z:\pestpcbsrv\HPCHEM1\ECD\_D\Data\PD091624\  
 Data File : PD085221.D  
 Signal(s) : Signal #1: ECD1A.ch Signal #2: ECD2B.ch  
 Acq On : 16 Sep 2024 15:54  
 Operator : AR\AJ  
 Sample : P3898-17RE  
 Misc :  
 ALS Vial : 23 Sample Multiplier: 1

**Instrument :**

ECD\_D

**ClientSampleId :**

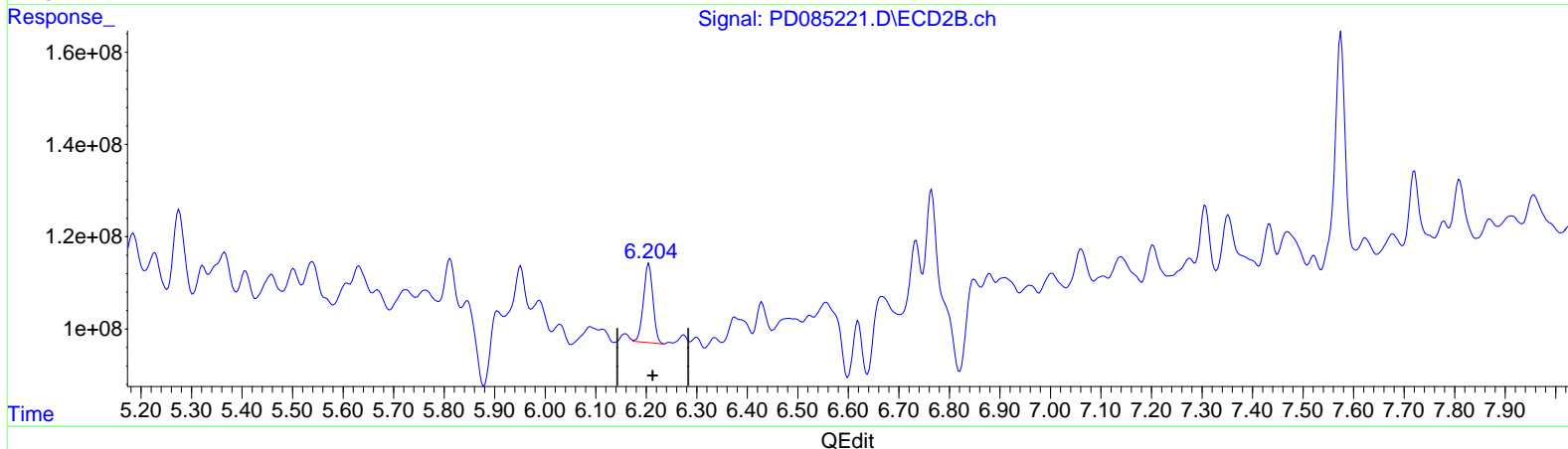
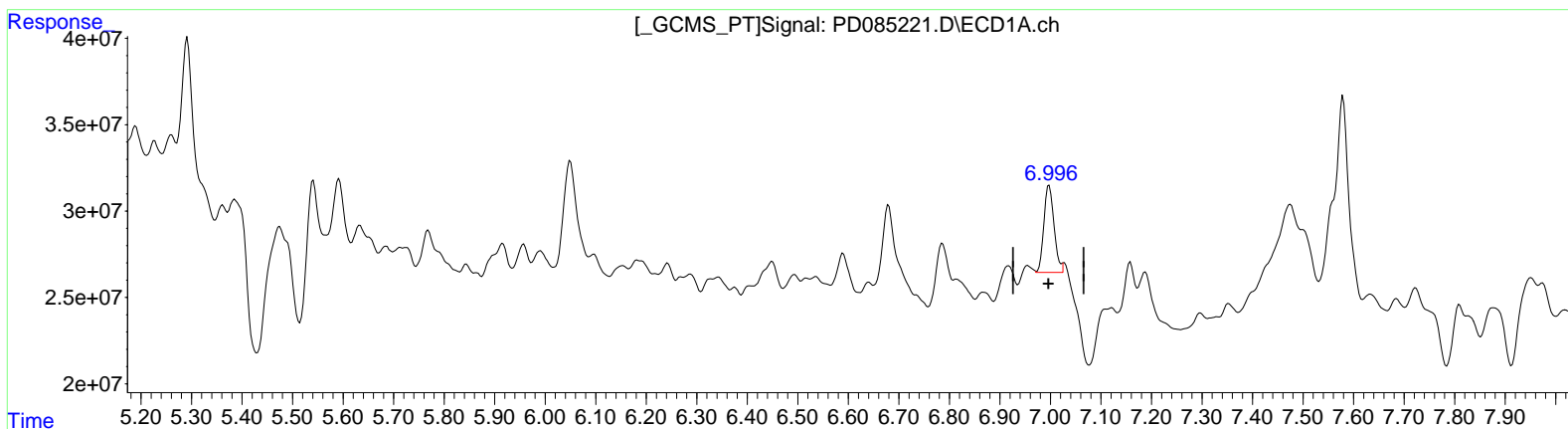
DDC90RE

**Manual IntegrationsAPPROVED**

Reviewed By :Abdul Mirza 09/17/2024  
 Supervised By :Ankita Jodhani 09/17/2024

Integration File signal 1: autoint1.e  
 Integration File signal 2: autoint2.e  
 Quant Time: Sep 17 02:49:41 2024  
 Quant Method : Z:\pestpcbsrv\HPCHEM1\ECD\_D\Method\PD082524CLP.M  
 Quant Title : GC Extractables  
 QLast Update : Tue Aug 27 02:47:48 2024  
 Response via : Initial Calibration  
 Integrator: ChemStation

Volume Inj. : 1 µl  
 Signal #1 Phase : ZB-MR1 Signal #2 Phase: ZB-MR2  
 Signal #1 Info : 30M x 0.32mm x0.5 Signal #2 Info : 30M x 0.32mm x 0.25µm



(17) 4,4'-DDT (MA)  
 6.996min 79.816 ng/ml m  
 response 71445808

(17) 4,4'-DDT #2 (MA)  
 6.204min 69.444 ng/ml m  
 response 222146484

Data Path : Z:\pestpcbsrv\HPCHEM1\ECD\_D\Data\PD091624\  
Data File : PD085221.D  
Signal(s) : Signal #1: ECD1A.ch Signal #2: ECD2B.ch  
Acq On : 16 Sep 2024 15:54  
Operator : AR\AJ  
Sample : P3898-17RE  
Misc :  
ALS Vial : 23 Sample Multiplier: 1

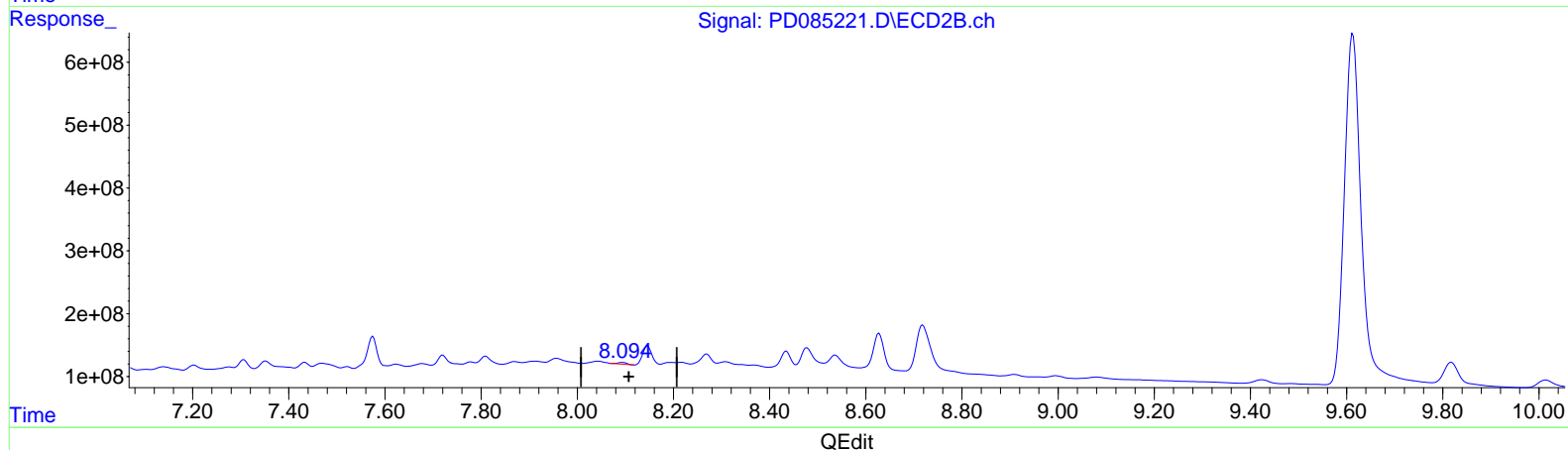
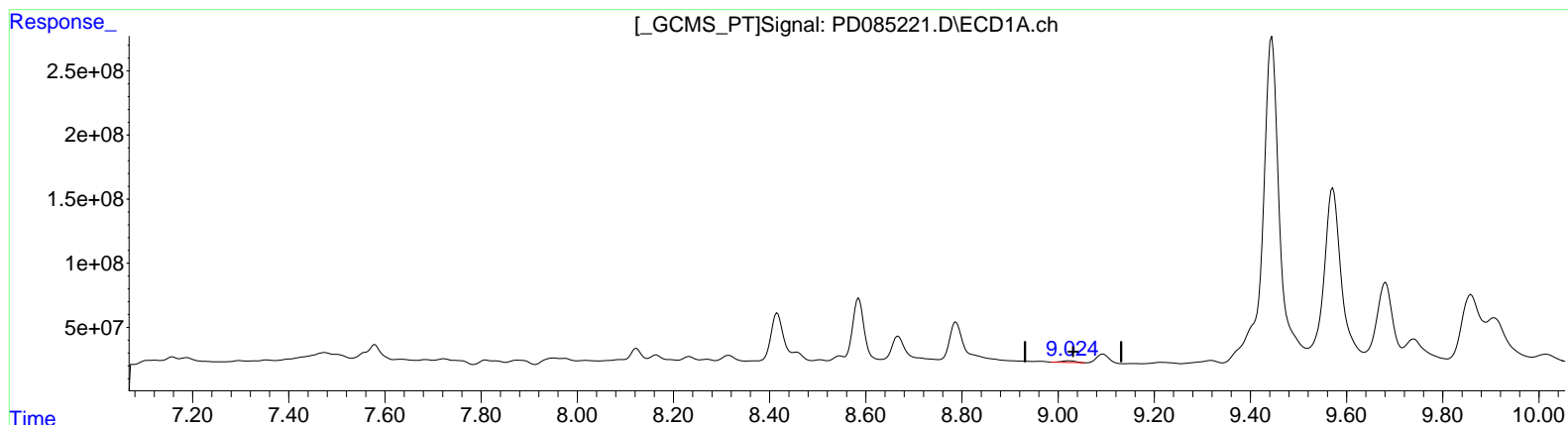
Instrument :  
ECD\_D  
ClientSampleId :  
DDC90RE

Manual Integrations APPROVED

Reviewed By : Abdul Mirza 09/17/2024  
Supervised By : Ankita Jodhani 09/17/2024

Integration File signal 1: autoint1.e  
Integration File signal 2: autoint2.e  
Quant Time: Sep 17 02:49:41 2024  
Quant Method : Z:\pestpcbsrv\HPCHEM1\ECD\_D\Method\PD082524CLP.M  
Quant Title : GC Extractables  
QLast Update : Tue Aug 27 02:47:48 2024  
Response via : Initial Calibration  
Integrator: ChemStation

Volume Inj. : 1 µl  
Signal #1 Phase : ZB-MR1 Signal #2 Phase: ZB-MR2  
Signal #1 Info : 30M x 0.32mm x 0.5 Signal #2 Info : 30M x 0.32mm x 0.25µm



(27) Decachlorobiphenyl (SA)

9.022min 19.901 ng/ml

response 25991406

(27) Decachlorobiphenyl #2 (SA)

8.095min 9.849 ng/ml

response 34247882

Data Path : Z:\pestpcbsrv\HPCHEM1\ECD\_D\Data\PD091624\  
 Data File : PD085221.D  
 Signal(s) : Signal #1: ECD1A.ch Signal #2: ECD2B.ch  
 Acq On : 16 Sep 2024 15:54  
 Operator : AR\AJ  
 Sample : P3898-17RE  
 Misc :  
 ALS Vial : 23 Sample Multiplier: 1

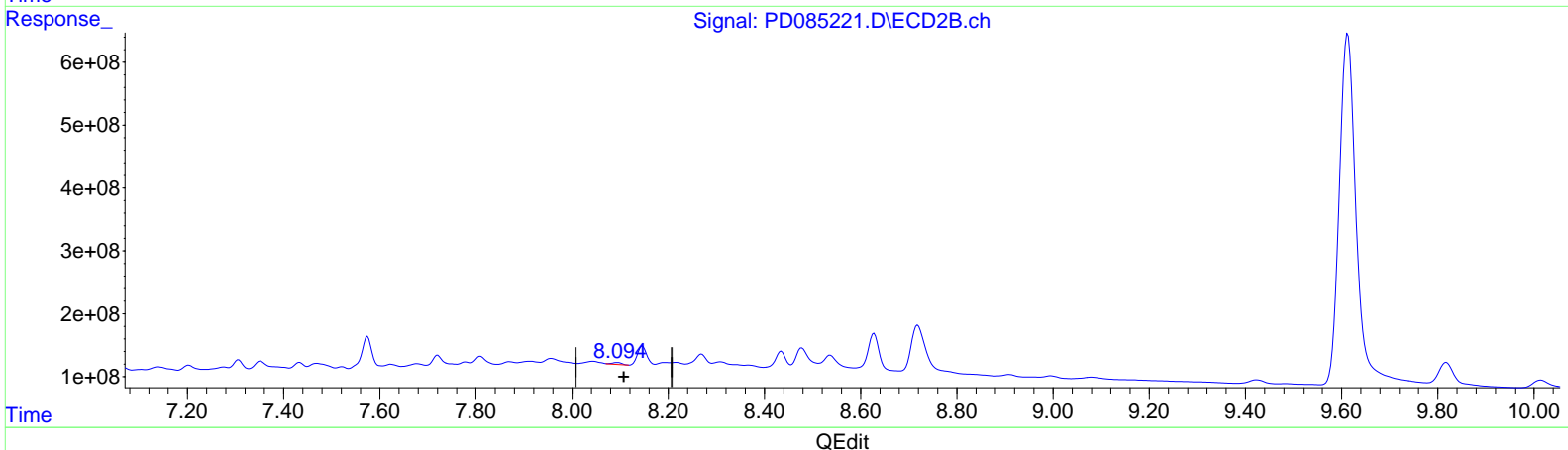
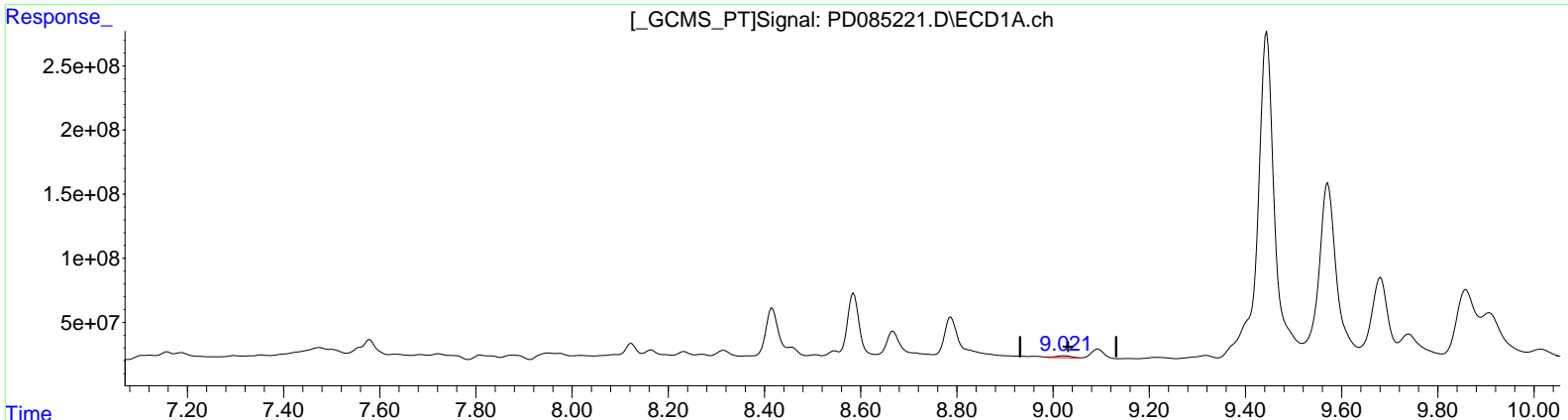
**Instrument :**  
 ECD\_D  
**ClientSampleId :**  
 DDC90RE

**Manual IntegrationsAPPROVED**

Reviewed By :Abdul Mirza 09/17/2024  
 Supervised By :Ankita Jodhani 09/17/2024

Integration File signal 1: autoint1.e  
 Integration File signal 2: autoint2.e  
 Quant Time: Sep 17 02:49:41 2024  
 Quant Method : Z:\pestpcbsrv\HPCHEM1\ECD\_D\Method\PD082524CLP.M  
 Quant Title : GC Extractables  
 QLast Update : Tue Aug 27 02:47:48 2024  
 Response via : Initial Calibration  
 Integrator: ChemStation

Volume Inj. : 1 µl  
 Signal #1 Phase : ZB-MR1 Signal #2 Phase: ZB-MR2  
 Signal #1 Info : 30M x 0.32mm x0.5 Signal #2 Info : 30M x 0.32mm x 0.25µm



(27) Decachlorobiphenyl (SA)  
 9.021min 23.883 ng/ml m  
 response 31192144

(27) Decachlorobiphenyl #2 (SA)  
 8.094min 12.793 ng/ml m  
 response 44483907