

Data Path : Z:\pestpcbsrv\HPCHEM1\ECD\_D\Data\PD091720\  
 Data File : PD059236.D  
 Signal(s) : Signal #1: ECD1A.ch Signal #2: ECD2B.ch  
 Acq On : 16 Sep 2020 08:53  
 Operator : DD\AJ  
 Sample : PSTDCCC050  
 Misc :  
 ALS Vial : 4 Sample Multiplier: 1

Instrument :  
 ECD\_D  
 ClientSampleId :  
 PSTDCCC050

Integration File signal 1: autoint1.e  
 Integration File signal 2: autoint2.e  
 Quant Time: Sep 17 01:18:59 2020  
 Quant Method : Z:\pestpcbsrv\HPCHEM1\ECD\_D\Method\PD091620.M  
 Quant Title : GC Extractables  
 QLast Update : Wed Sep 16 03:41:41 2020  
 Response via : Initial Calibration  
 Integrator: ChemStation

Volume Inj. : 2 µl  
 Signal #1 Phase : ZB-MR2 Signal #2 Phase: ZB-MR1  
 Signal #1 Info : 30M x 0.32mm x0.2 Signal #2 Info : 30M x 0.32mm x 0.50µm

Compound	RT#1	RT#2	Resp#1	Resp#2	ng/ml	ng/ml
-----						
System Monitoring Compounds						
1) SA Tetrachlo...	3.206	3.864	44288787	85349350	49.139	50.519
28) SA Decachlor...	7.837	8.859	44719721	72927840	48.004	46.619
Target Compounds						
2) A alpha-BHC	3.628	4.247	74195843	137.0E6	49.967	50.825
3) MA gamma-BHC...	3.899	4.528	69804521	126.2E6	48.903	51.379
4) MA Heptachlor	4.177	5.027	58785241	119.9E6	49.864	51.119
5) MB Aldrin	4.412	5.327	60944589	114.1E6	50.082	51.798
6) B beta-BHC	4.148	4.700	26506017	50816191	48.745	50.638
7) B delta-BHC	4.338	4.911	66799597	97506261	49.494	57.009
8) B Heptachlo...	4.844	5.710	55932469	105.2E6	49.809	51.437
9) A Endosulfan I	5.170	6.063	52261682	97554820	49.842	50.707
10) B gamma-Chl...	5.064	5.943	56940618	107.4E6	49.826	51.524
11) B alpha-Chl...	5.120	6.015	56531632	107.2E6	49.721	50.787
12) B 4,4'-DDE	5.289	6.175	55563630	102.0E6	49.925	50.663
13) MA Dieldrin	5.408	6.318	55270709	105.1E6	49.604	50.676
14) MA Endrin	5.658	6.534	47146132	88606259	47.808	48.777
15) B Endosulfa...	5.932	6.744	49429489	91079380	48.892	47.753
16) A 4,4'-DDD	5.796	6.663	42267762	84792224	49.821	50.316
17) MA 4,4'-DDT	6.029	6.960	42025435	85947503	51.001	50.042
18) B Endrin al...	6.100	6.868	40816009	77487942	49.460	49.678
19) B Endosulfa...	6.310	7.090	45510583	86512388	48.694	48.832
20) A Methoxychlor	6.577	7.420	19560831	46229878	50.402	47.610
21) B Endrin ke...	6.789	7.556	55577539	96789136	49.930	49.549
22) Mirex	6.959	8.006	36354845	66610196	49.653	47.408
-----						

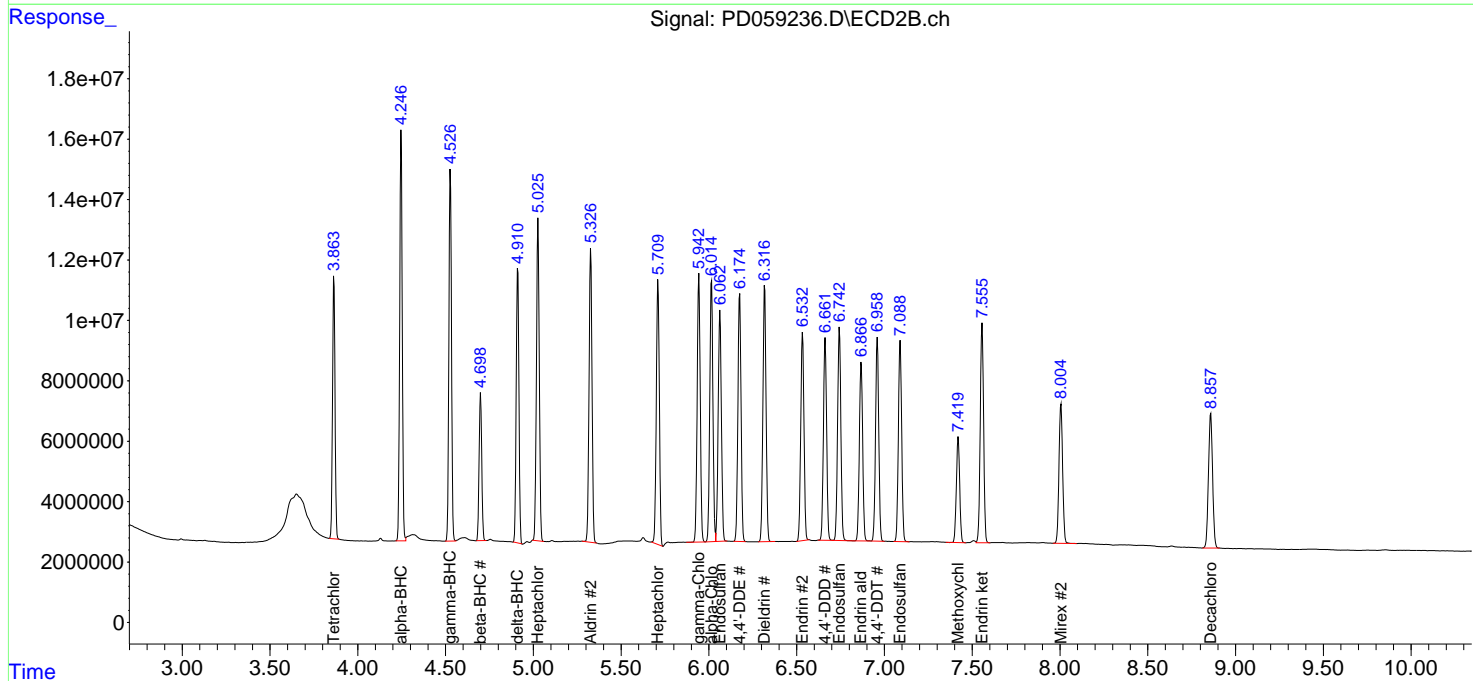
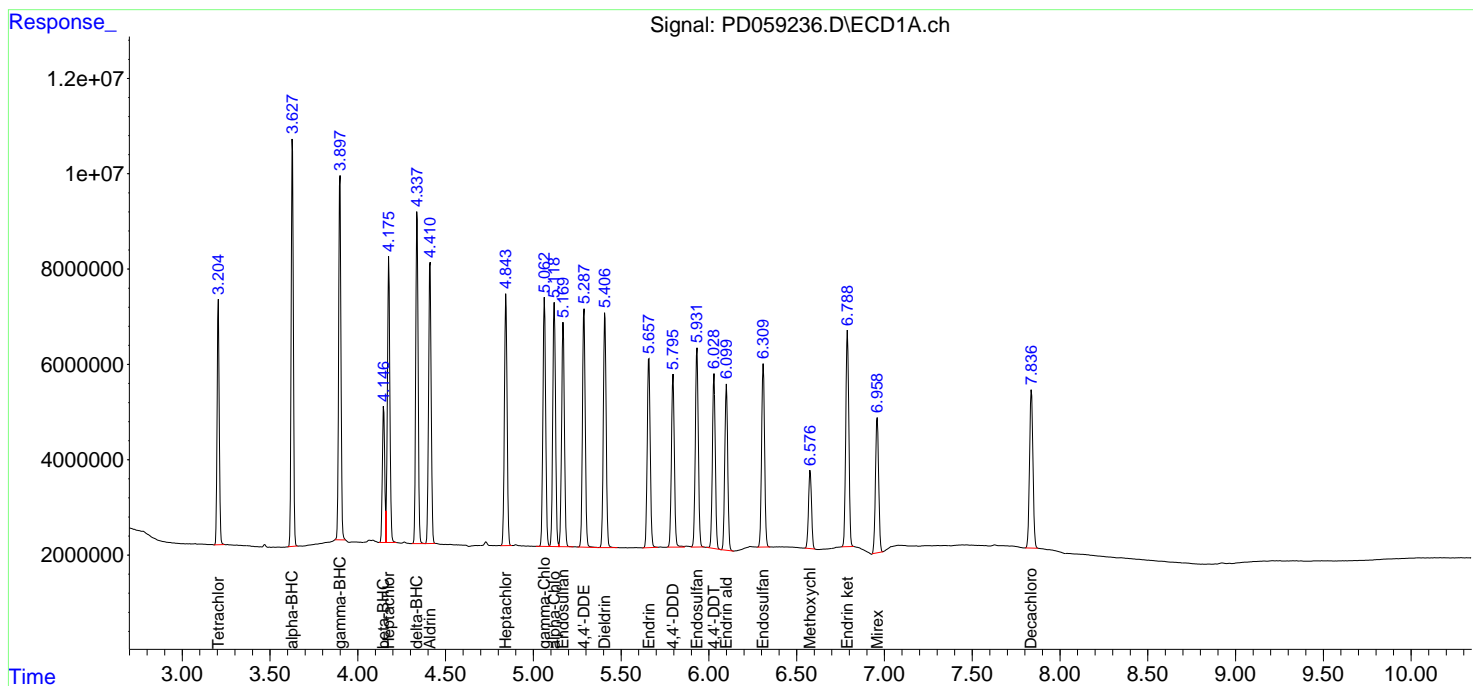
(f)=RT Delta > 1/2 Window (#)=Amounts differ by > 25% (m)=manual int.

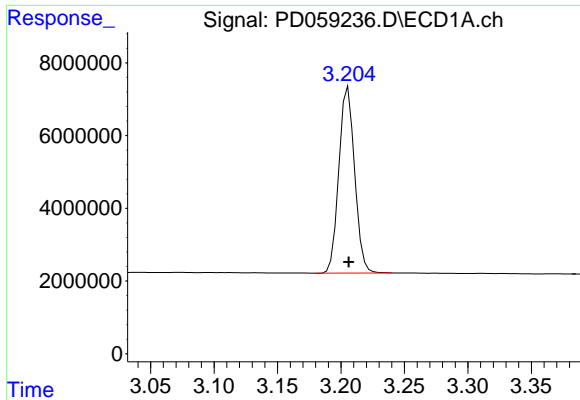
Data Path : Z:\pestpcbsrv\HPCHEM1\ECD\_D\Data\PD091720\  
 Data File : PD059236.D  
 Signal(s) : Signal #1: ECD1A.ch Signal #2: ECD2B.ch  
 Acq On : 16 Sep 2020 08:53  
 Operator : DD\AJ  
 Sample : PSTDCCC050  
 Misc :  
 ALS Vial : 4 Sample Multiplier: 1

Instrument :  
 ECD\_D  
 ClientSampled :  
 PSTDCCC050

Integration File signal 1: autoint1.e  
 Integration File signal 2: autoint2.e  
 Quant Time: Sep 17 01:18:59 2020  
 Quant Method : Z:\pestpcbsrv\HPCHEM1\ECD\_D\Method\PD091620.M  
 Quant Title : GC Extractables  
 QLast Update : Wed Sep 16 03:41:41 2020  
 Response via : Initial Calibration  
 Integrator: ChemStation

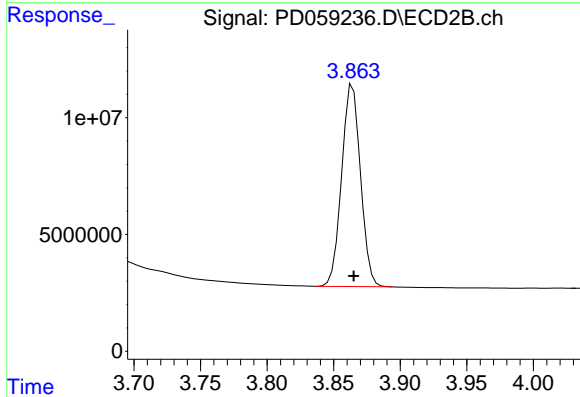
Volume Inj. : 2 µl  
 Signal #1 Phase : ZB-MR2 Signal #2 Phase: ZB-MR1  
 Signal #1 Info : 30M x 0.32mm x0.2 Signal #2 Info : 30M x 0.32mm x 0.50µm



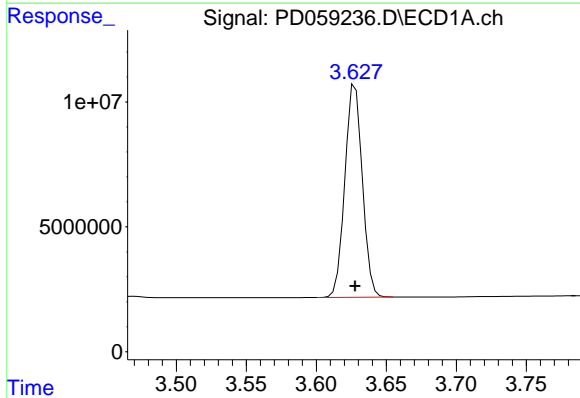


#1 Tetrachloro-m-xylene  
 R.T.: 3.206 min  
 Delta R.T.: 0.000 min  
 Response: 44288787  
 Conc: 49.14 ng/ml

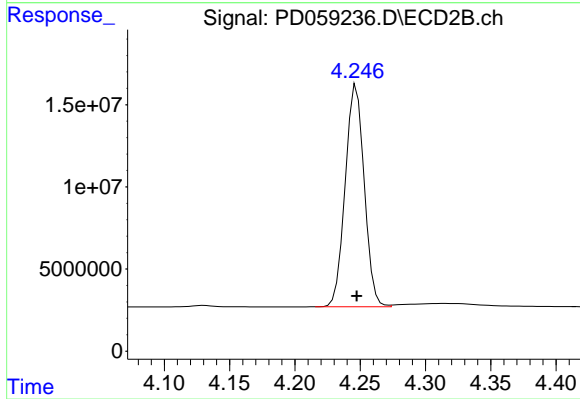
Instrument :  
 ECD\_D  
 ClientSampleId :  
 PSTDCCC050



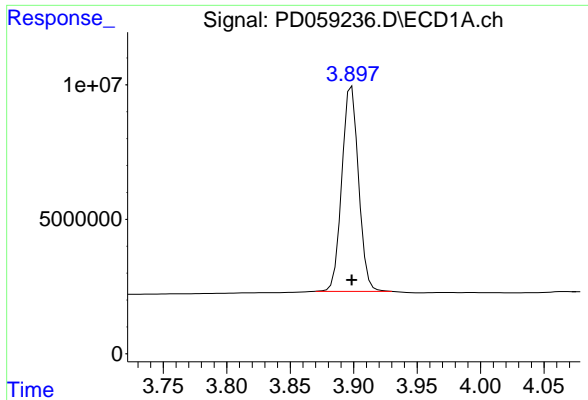
#1 Tetrachloro-m-xylene  
 R.T.: 3.864 min  
 Delta R.T.: 0.000 min  
 Response: 85349350  
 Conc: 50.52 ng/ml



#2 alpha-BHC  
 R.T.: 3.628 min  
 Delta R.T.: 0.000 min  
 Response: 74195843  
 Conc: 49.97 ng/ml

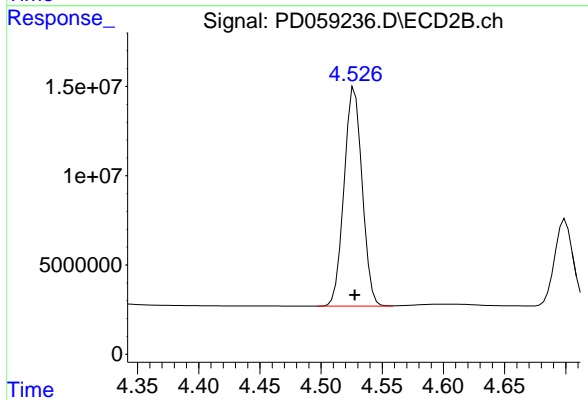


#2 alpha-BHC  
 R.T.: 4.247 min  
 Delta R.T.: 0.000 min  
 Response: 137048947  
 Conc: 50.82 ng/ml

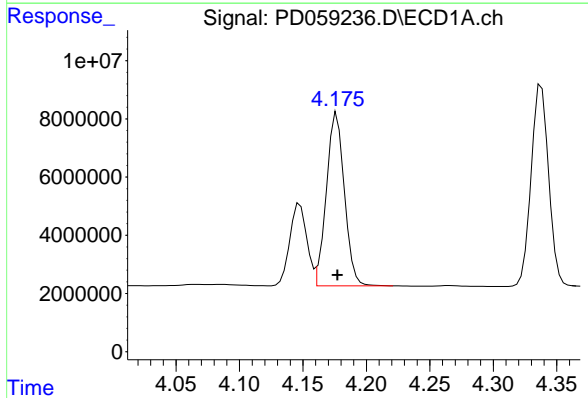


#3 gamma-BHC (Lindane)  
R.T.: 3.899 min  
Delta R.T.: 0.000 min  
Response: 69804521  
Conc: 48.90 ng/ml

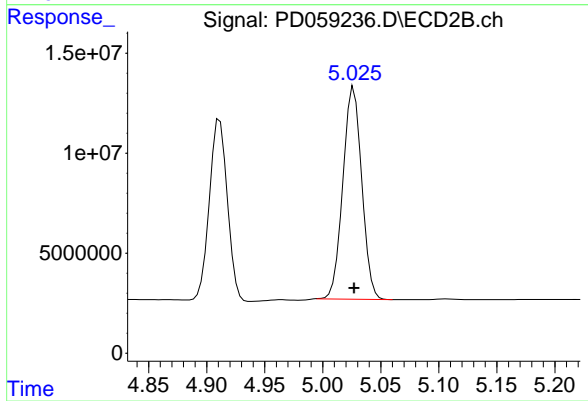
Instrument :  
ECD\_D  
ClientSampleId :  
PSTDCCC050



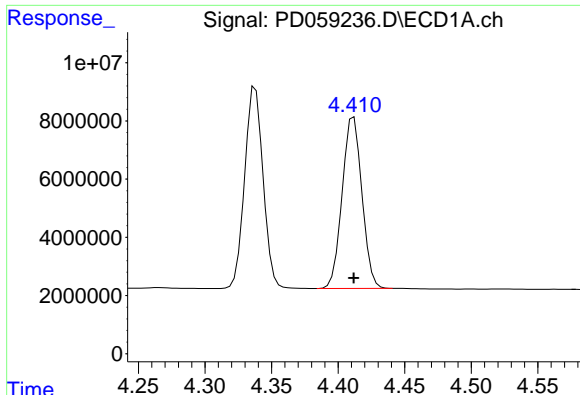
#3 gamma-BHC (Lindane)  
R.T.: 4.528 min  
Delta R.T.: 0.000 min  
Response: 126164650  
Conc: 51.38 ng/ml



#4 Heptachlor  
R.T.: 4.177 min  
Delta R.T.: 0.000 min  
Response: 58785241  
Conc: 49.86 ng/ml

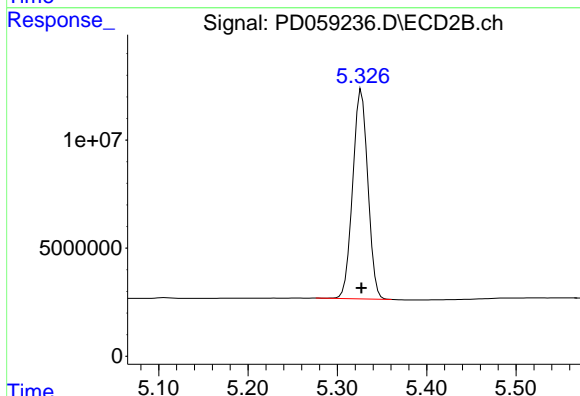


#4 Heptachlor  
R.T.: 5.027 min  
Delta R.T.: 0.000 min  
Response: 119923280  
Conc: 51.12 ng/ml

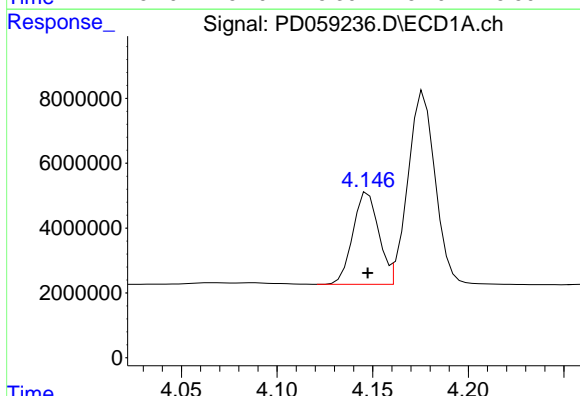


#5 Aldrin  
 R.T.: 4.412 min  
 Delta R.T.: 0.000 min  
 Response: 60944589  
 Conc: 50.08 ng/ml

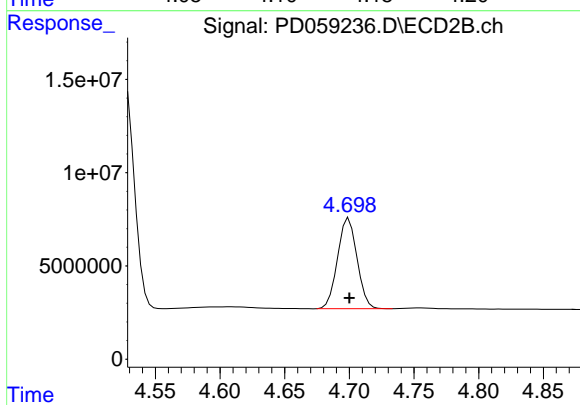
Instrument :  
 ECD\_D  
 ClientSampleId :  
 PSTDCCC050



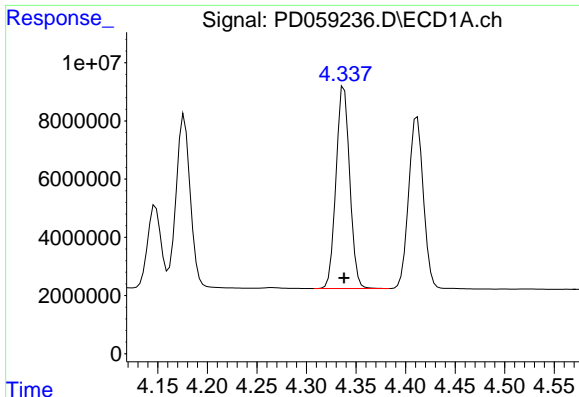
#5 Aldrin  
 R.T.: 5.327 min  
 Delta R.T.: 0.000 min  
 Response: 114108713  
 Conc: 51.80 ng/ml



#6 beta-BHC  
 R.T.: 4.148 min  
 Delta R.T.: 0.000 min  
 Response: 26506017  
 Conc: 48.75 ng/ml



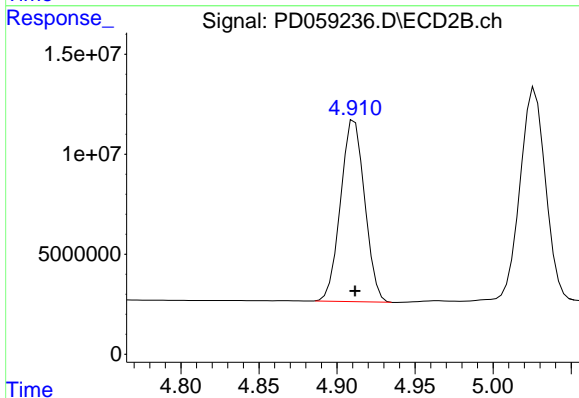
#6 beta-BHC  
 R.T.: 4.700 min  
 Delta R.T.: 0.000 min  
 Response: 50816191  
 Conc: 50.64 ng/ml



#7 delta-BHC

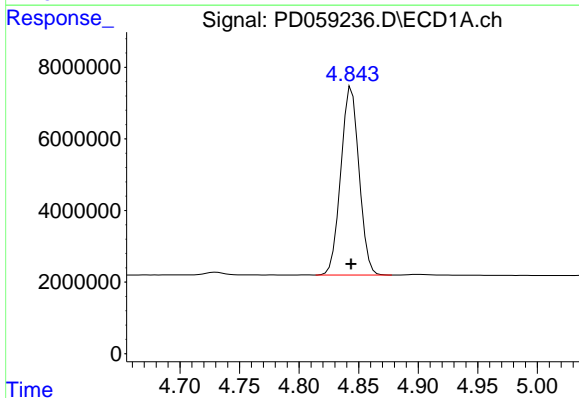
R.T.: 4.338 min  
 Delta R.T.: 0.000 min  
 Response: 66799597  
 Conc: 49.49 ng/ml

Instrument :  
 ECD\_D  
 ClientSampleId :  
 PSTDCCC050



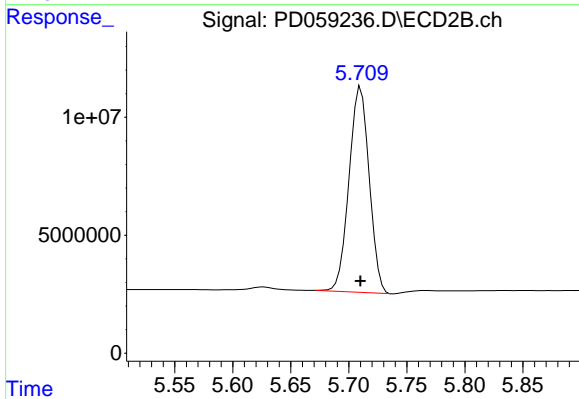
#7 delta-BHC

R.T.: 4.911 min  
 Delta R.T.: 0.000 min  
 Response: 97506261  
 Conc: 57.01 ng/ml



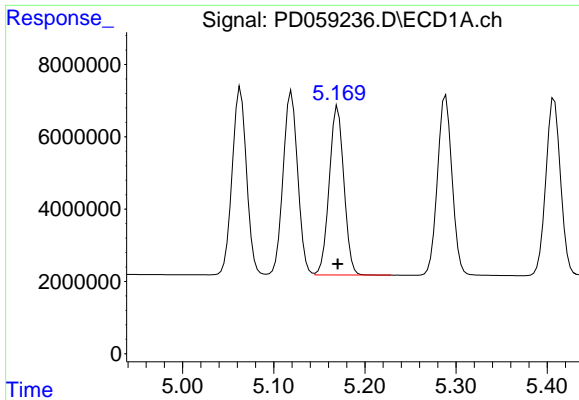
#8 Heptachlor epoxide

R.T.: 4.844 min  
 Delta R.T.: 0.000 min  
 Response: 55932469  
 Conc: 49.81 ng/ml



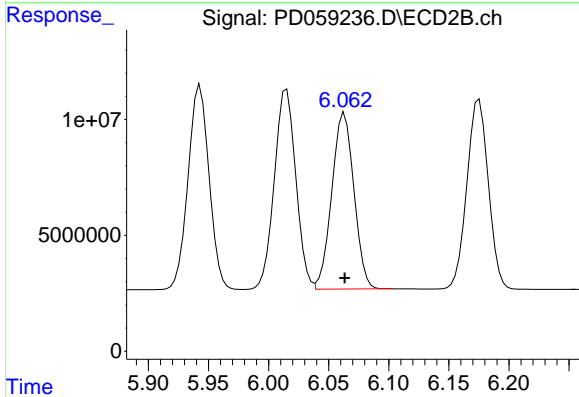
#8 Heptachlor epoxide

R.T.: 5.710 min  
 Delta R.T.: 0.000 min  
 Response: 105176910  
 Conc: 51.44 ng/ml

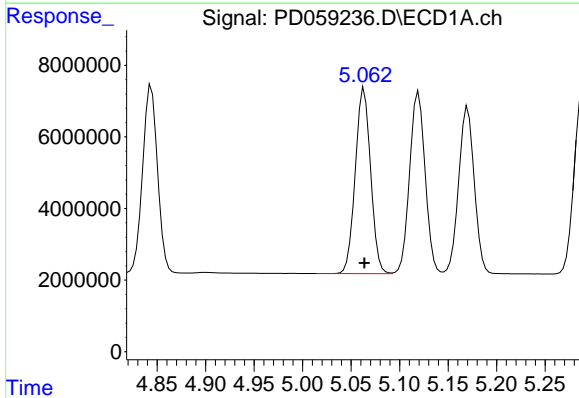


#9 Endosulfan I  
 R.T.: 5.170 min  
 Delta R.T.: 0.000 min  
 Response: 52261682  
 Conc: 49.84 ng/ml

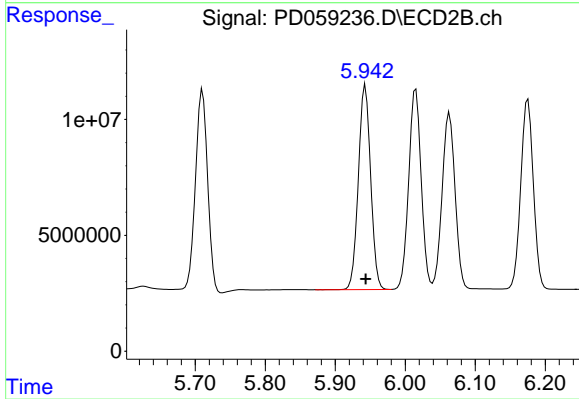
Instrument :  
 ECD\_D  
 ClientSampleId :  
 PSTDCCC050



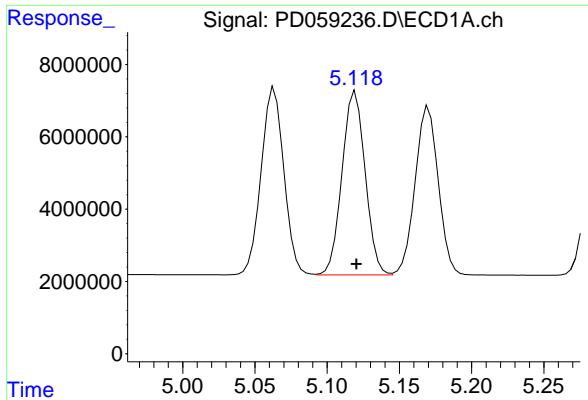
#9 Endosulfan I  
 R.T.: 6.063 min  
 Delta R.T.: 0.000 min  
 Response: 97554820  
 Conc: 50.71 ng/ml



#10 gamma-Chlordane  
 R.T.: 5.064 min  
 Delta R.T.: 0.000 min  
 Response: 56940618  
 Conc: 49.83 ng/ml

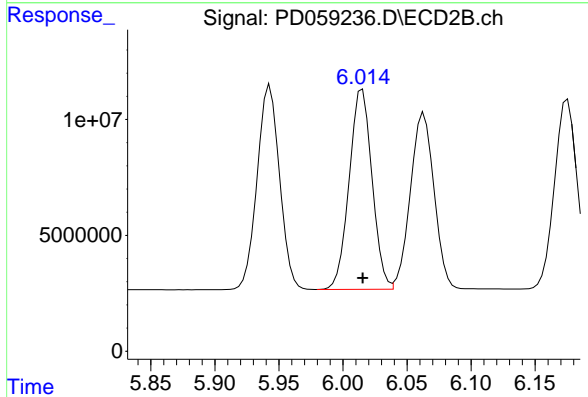


#10 gamma-Chlordane  
 R.T.: 5.943 min  
 Delta R.T.: 0.000 min  
 Response: 107421972  
 Conc: 51.52 ng/ml

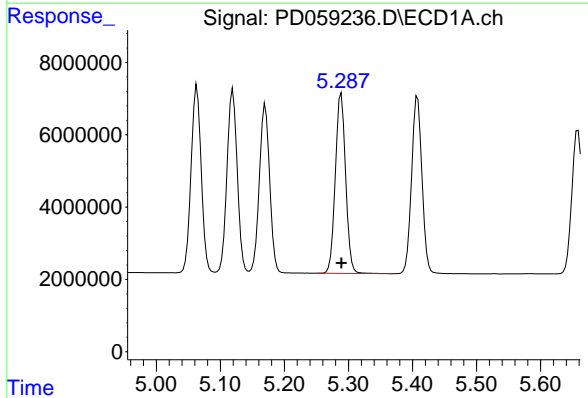


#11 alpha-Chlordane  
 R.T.: 5.120 min  
 Delta R.T.: 0.000 min  
 Response: 56531632  
 Conc: 49.72 ng/ml

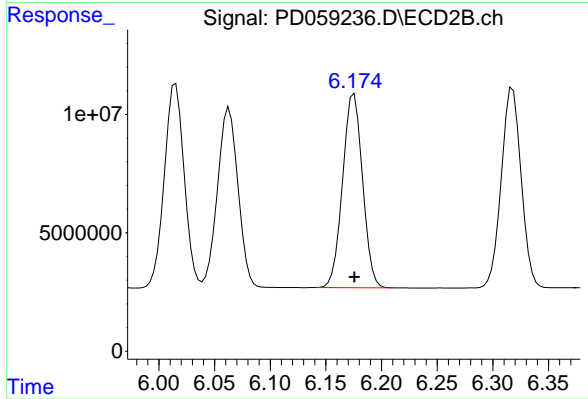
Instrument :  
 ECD\_D  
 ClientSampleId :  
 PSTDCCC050



#11 alpha-Chlordane  
 R.T.: 6.015 min  
 Delta R.T.: 0.000 min  
 Response: 107209381  
 Conc: 50.79 ng/ml

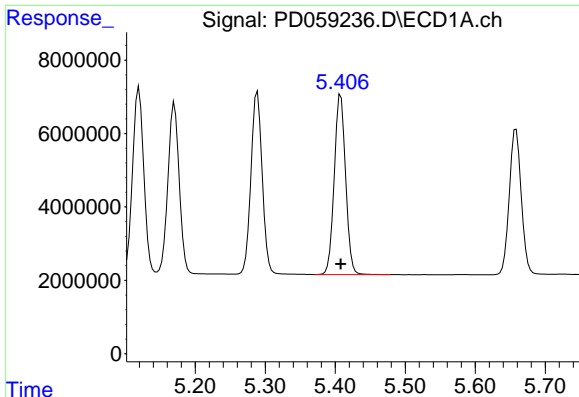


#12 4,4'-DDE  
 R.T.: 5.289 min  
 Delta R.T.: 0.000 min  
 Response: 55563630  
 Conc: 49.92 ng/ml



#12 4,4'-DDE  
 R.T.: 6.175 min  
 Delta R.T.: 0.000 min  
 Response: 102034107  
 Conc: 50.66 ng/ml

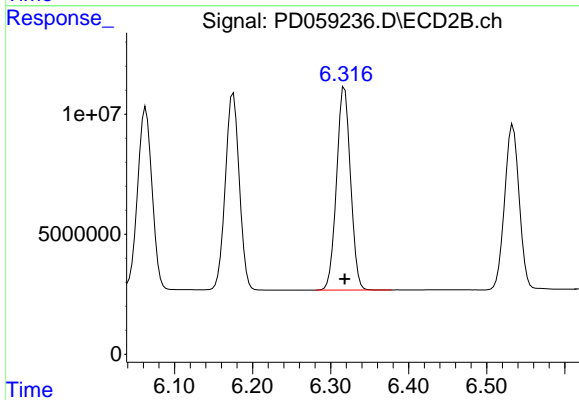




#13 Dieldrin

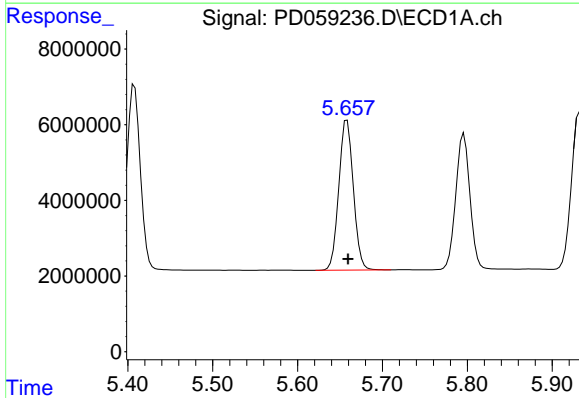
R.T.: 5.408 min  
 Delta R.T.: 0.000 min  
 Response: 55270709  
 Conc: 49.60 ng/ml

Instrument :  
 ECD\_D  
 ClientSampled :  
 PSTDCCC050



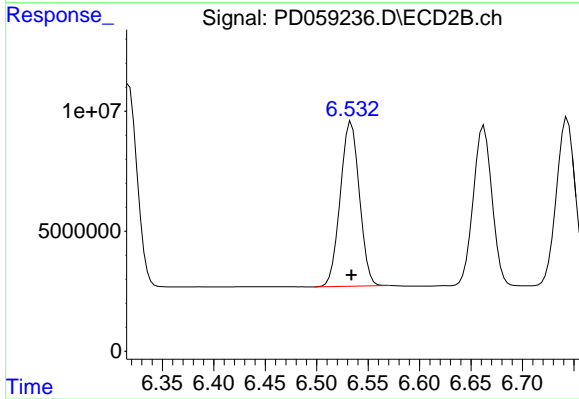
#13 Dieldrin

R.T.: 6.318 min  
 Delta R.T.: 0.000 min  
 Response: 105088200  
 Conc: 50.68 ng/ml



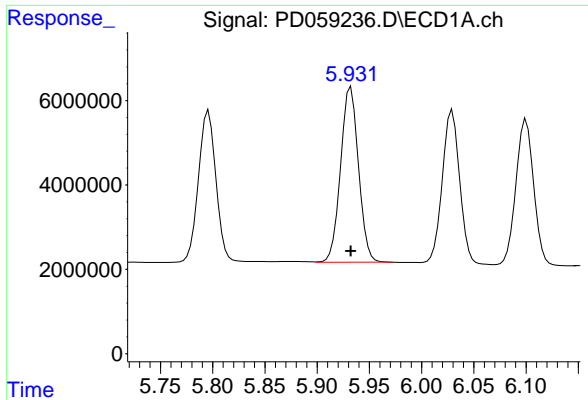
#14 Endrin

R.T.: 5.658 min  
 Delta R.T.: 0.000 min  
 Response: 47146132  
 Conc: 47.81 ng/ml



#14 Endrin

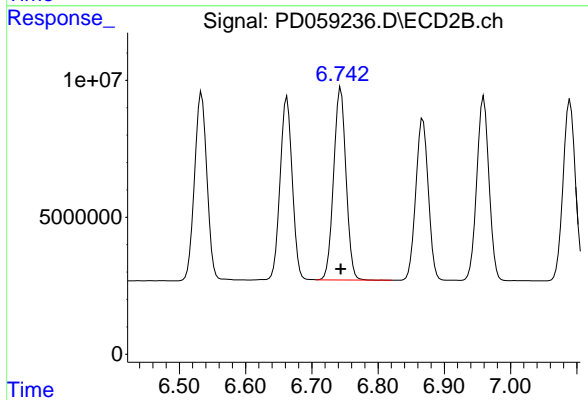
R.T.: 6.534 min  
 Delta R.T.: 0.000 min  
 Response: 88606259  
 Conc: 48.78 ng/ml



#15 Endosulfan II

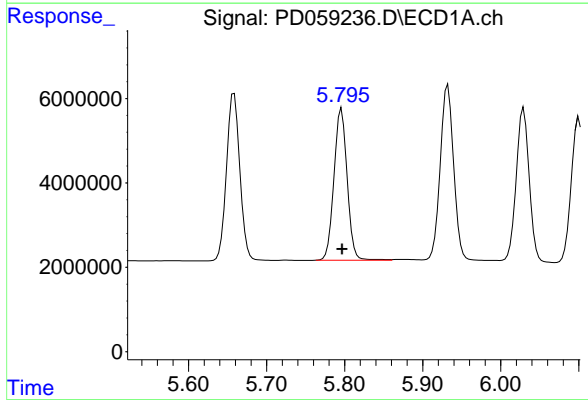
R.T.: 5.932 min  
 Delta R.T.: 0.000 min  
 Response: 49429489  
 Conc: 48.89 ng/ml

Instrument :  
 ECD\_D  
 ClientSampleId :  
 PSTDCCC050



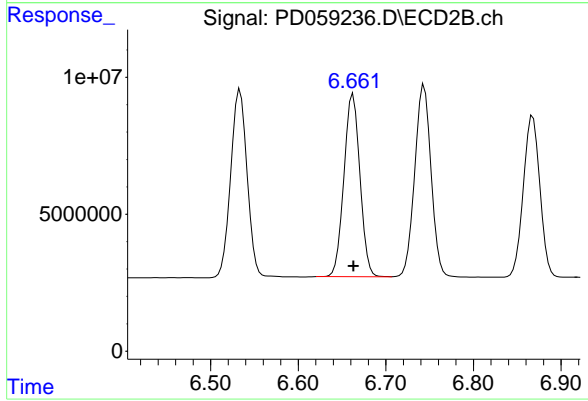
#15 Endosulfan II

R.T.: 6.744 min  
 Delta R.T.: 0.000 min  
 Response: 91079380  
 Conc: 47.75 ng/ml



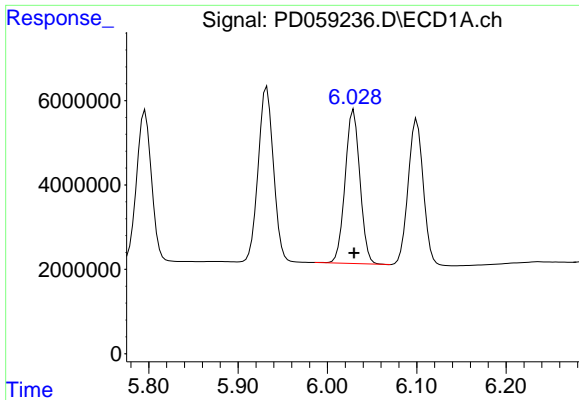
#16 4,4'-DDD

R.T.: 5.796 min  
 Delta R.T.: 0.000 min  
 Response: 42267762  
 Conc: 49.82 ng/ml



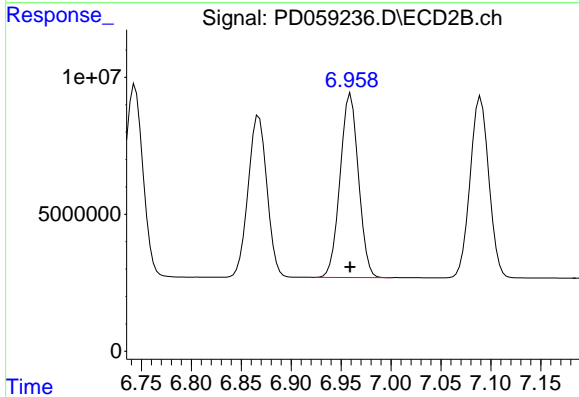
#16 4,4'-DDD

R.T.: 6.663 min  
 Delta R.T.: 0.000 min  
 Response: 84792224  
 Conc: 50.32 ng/ml

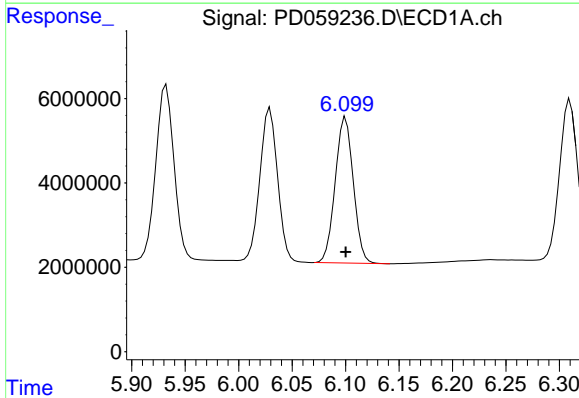


#17 4,4'-DDT  
 R.T.: 6.029 min  
 Delta R.T.: 0.000 min  
 Response: 42025435  
 Conc: 51.00 ng/ml

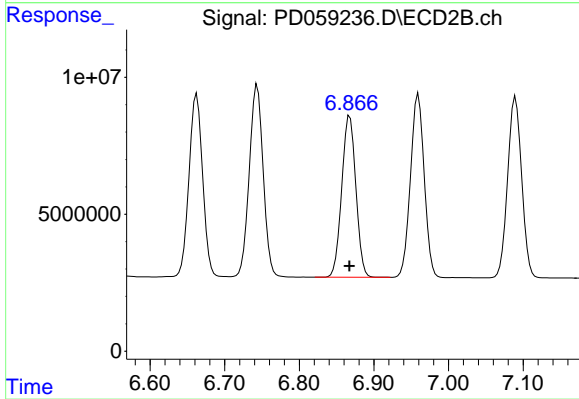
Instrument :  
 ECD\_D  
 ClientSampleId :  
 PSTDCCC050



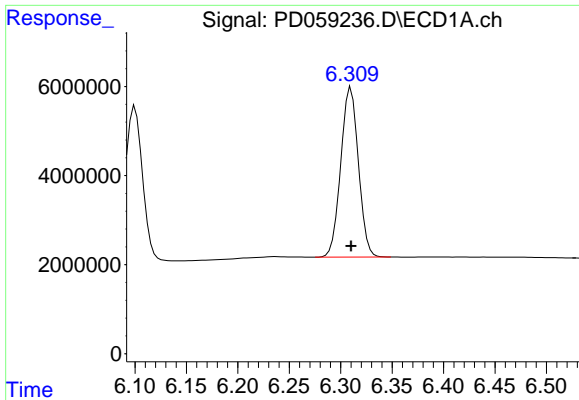
#17 4,4'-DDT  
 R.T.: 6.960 min  
 Delta R.T.: 0.000 min  
 Response: 85947503  
 Conc: 50.04 ng/ml



#18 Endrin aldehyde  
 R.T.: 6.100 min  
 Delta R.T.: 0.000 min  
 Response: 40816009  
 Conc: 49.46 ng/ml

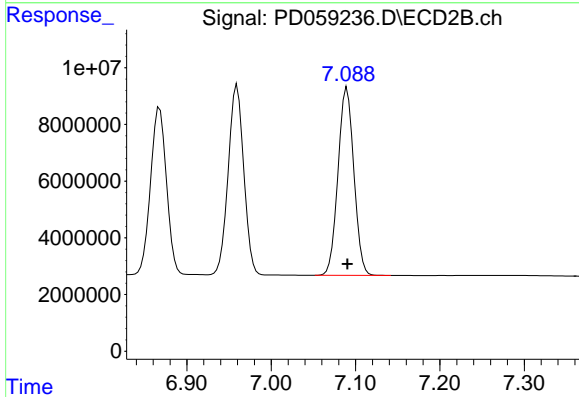


#18 Endrin aldehyde  
 R.T.: 6.868 min  
 Delta R.T.: 0.000 min  
 Response: 77487942  
 Conc: 49.68 ng/ml

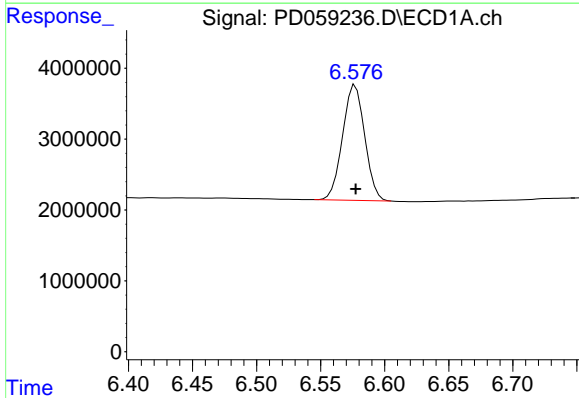


#19 Endosulfan Sulfate  
 R.T.: 6.310 min  
 Delta R.T.: 0.000 min  
 Response: 45510583  
 Conc: 48.69 ng/ml

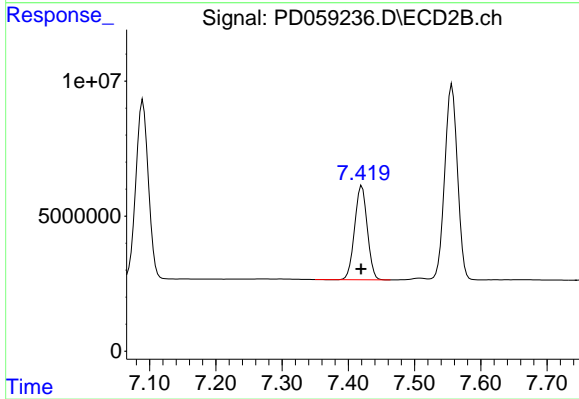
Instrument :  
 ECD\_D  
 ClientSampleId :  
 PSTDCCC050



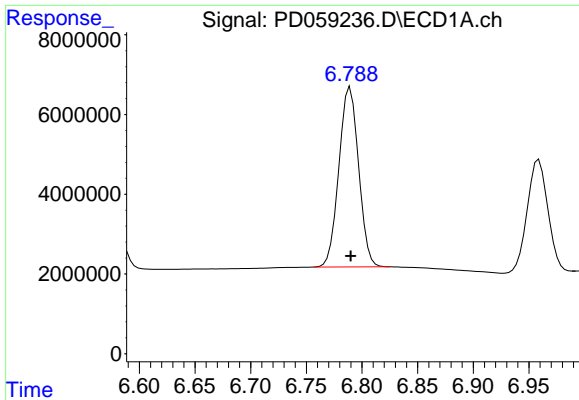
#19 Endosulfan Sulfate  
 R.T.: 7.090 min  
 Delta R.T.: 0.000 min  
 Response: 86512388  
 Conc: 48.83 ng/ml



#20 Methoxychlor  
 R.T.: 6.577 min  
 Delta R.T.: 0.000 min  
 Response: 19560831  
 Conc: 50.40 ng/ml

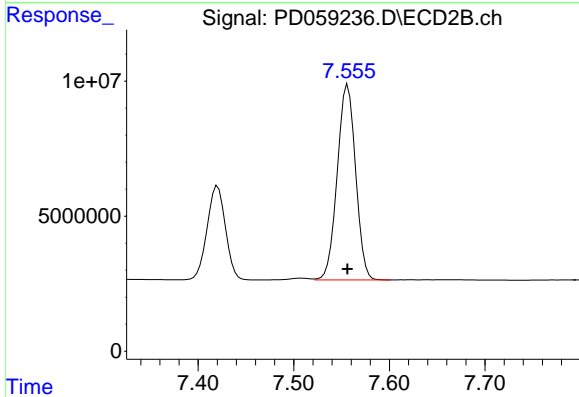


#20 Methoxychlor  
 R.T.: 7.420 min  
 Delta R.T.: 0.000 min  
 Response: 46229878  
 Conc: 47.61 ng/ml

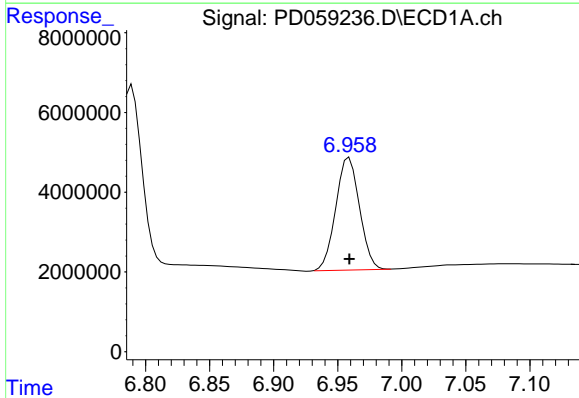


#21 Endrin ketone  
 R.T.: 6.789 min  
 Delta R.T.: 0.000 min  
 Response: 55577539  
 Conc: 49.93 ng/ml

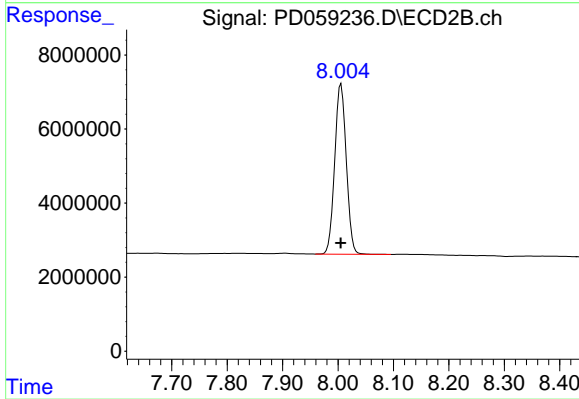
Instrument :  
 ECD\_D  
 ClientSampleId :  
 PSTDCCC050



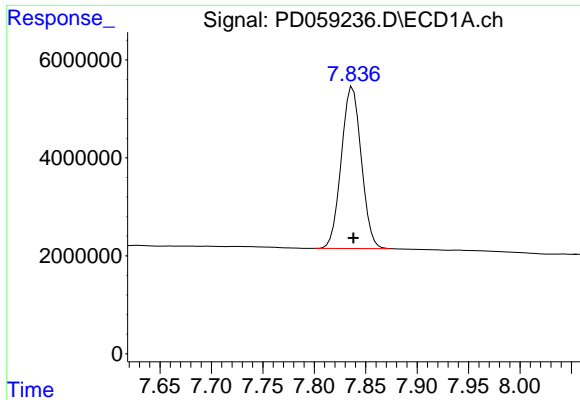
#21 Endrin ketone  
 R.T.: 7.556 min  
 Delta R.T.: 0.000 min  
 Response: 96789136  
 Conc: 49.55 ng/ml



#22 Mirex  
 R.T.: 6.959 min  
 Delta R.T.: 0.000 min  
 Response: 36354845  
 Conc: 49.65 ng/ml



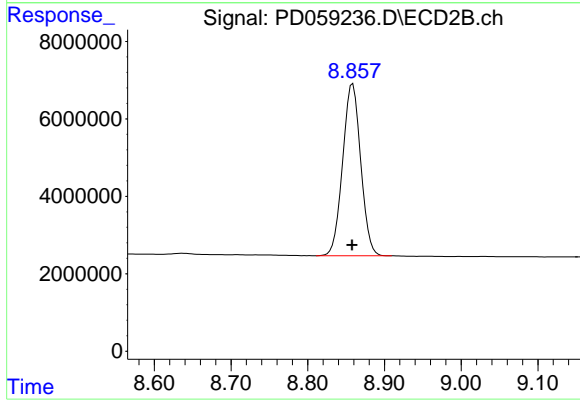
#22 Mirex  
 R.T.: 8.006 min  
 Delta R.T.: 0.000 min  
 Response: 66610196  
 Conc: 47.41 ng/ml



#28 Decachlorobiphenyl

R.T.: 7.837 min  
Delta R.T.: 0.000 min  
Response: 44719721  
Conc: 48.00 ng/ml

Instrument :  
ECD\_D  
ClientSampleId :  
PSTDCCC050



#28 Decachlorobiphenyl

R.T.: 8.859 min  
Delta R.T.: 0.000 min  
Response: 72927840  
Conc: 46.62 ng/ml