

Data Path : Z:\pestpcbsrv\HPCHEM1\ECD\_D\Data\PD091720\  
 Data File : PD059239.D  
 Signal(s) : Signal #1: ECD1A.ch Signal #2: ECD2B.ch  
 Acq On : 16 Sep 2020 09:36  
 Operator : DD\AJ  
 Sample : PB131621BL  
 Misc :  
 ALS Vial : 8 Sample Multiplier: 1

Instrument :  
 ECD\_D  
 ClientSampleId :  
 PB131621BL

Integration File signal 1: autoint1.e  
 Integration File signal 2: autoint2.e  
 Quant Time: Sep 17 01:19:43 2020  
 Quant Method : Z:\pestpcbsrv\HPCHEM1\ECD\_D\Method\PD091620.M  
 Quant Title : GC Extractables  
 QLast Update : Wed Sep 16 03:41:41 2020  
 Response via : Initial Calibration  
 Integrator: ChemStation

Volume Inj. : 2 µl  
 Signal #1 Phase : ZB-MR2 Signal #2 Phase: ZB-MR1  
 Signal #1 Info : 30M x 0.32mm x0.2 Signal #2 Info : 30M x 0.32mm x 0.50µm

Compound	RT#1	RT#2	Resp#1	Resp#2	ng/ml	ng/ml
-----						
System Monitoring Compounds						
1) SA Tetrachlo...	3.205	3.865	19633688	38273209	21.784	22.654
28) SA Decachlor...	7.837	8.857	21302477	35113436	22.867	22.446

Target Compounds

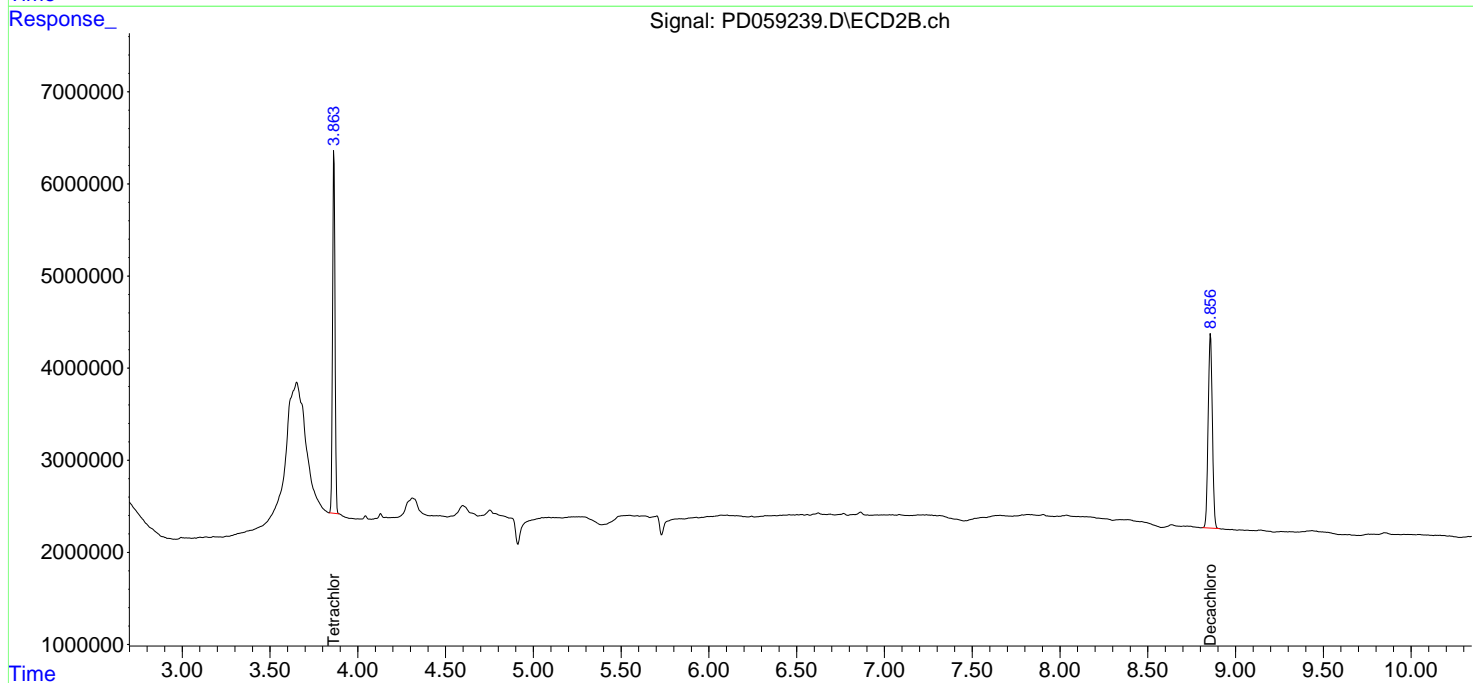
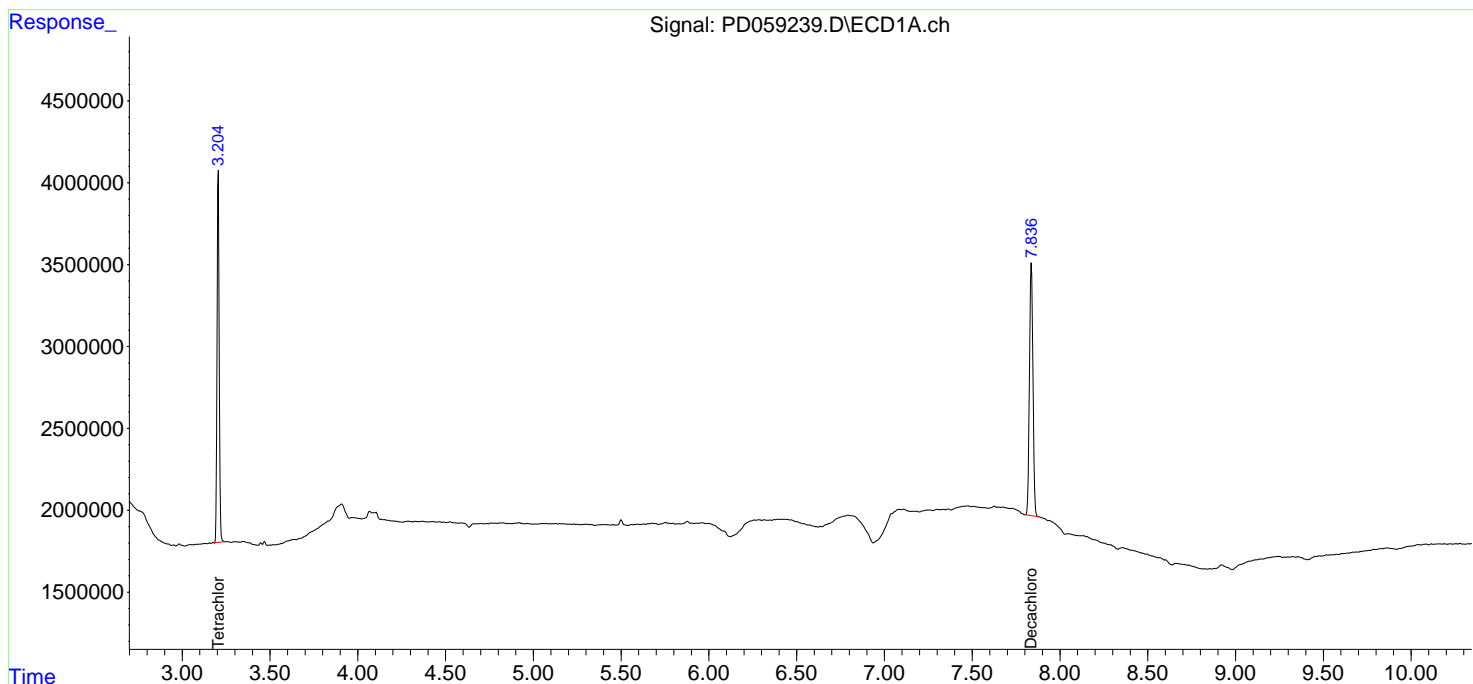
(f)=RT Delta > 1/2 Window (#)=Amounts differ by > 25% (m)=manual int.

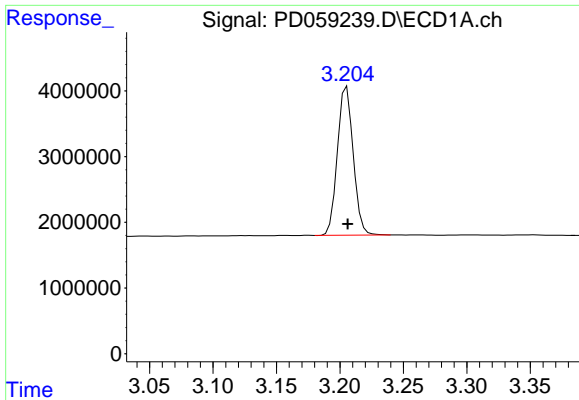
Data Path : Z:\pestpcbsrv\HPCHEM1\ECD\_D\Data\PD091720\  
 Data File : PD059239.D  
 Signal(s) : Signal #1: ECD1A.ch Signal #2: ECD2B.ch  
 Acq On : 16 Sep 2020 09:36  
 Operator : DD\AJ  
 Sample : PB131621BL  
 Misc :  
 ALS Vial : 8 Sample Multiplier: 1

Instrument :  
 ECD\_D  
 ClientSampleId :  
 PB131621BL

Integration File signal 1: autoint1.e  
 Integration File signal 2: autoint2.e  
 Quant Time: Sep 17 01:19:43 2020  
 Quant Method : Z:\pestpcbsrv\HPCHEM1\ECD\_D\Method\PD091620.M  
 Quant Title : GC Extractables  
 QLast Update : Wed Sep 16 03:41:41 2020  
 Response via : Initial Calibration  
 Integrator: ChemStation

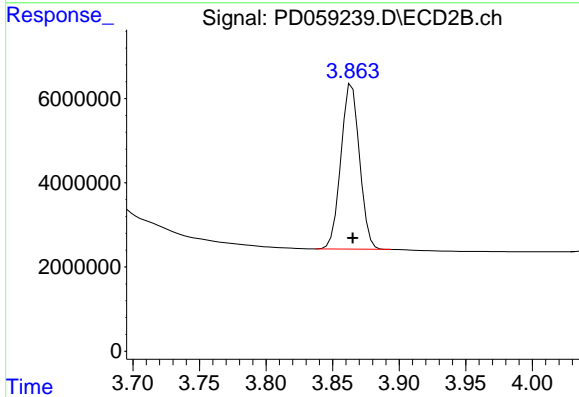
Volume Inj. : 2 µl  
 Signal #1 Phase : ZB-MR2 Signal #2 Phase: ZB-MR1  
 Signal #1 Info : 30M x 0.32mm x0.2 Signal #2 Info : 30M x 0.32mm x 0.50µm



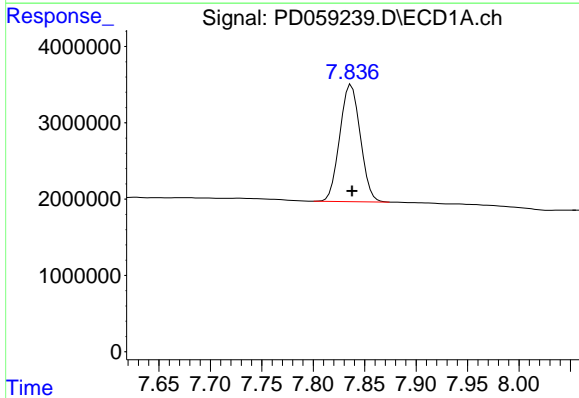


#1 Tetrachloro-m-xylene  
R.T.: 3.205 min  
Delta R.T.: 0.000 min  
Response: 19633688  
Conc: 21.78 ng/ml

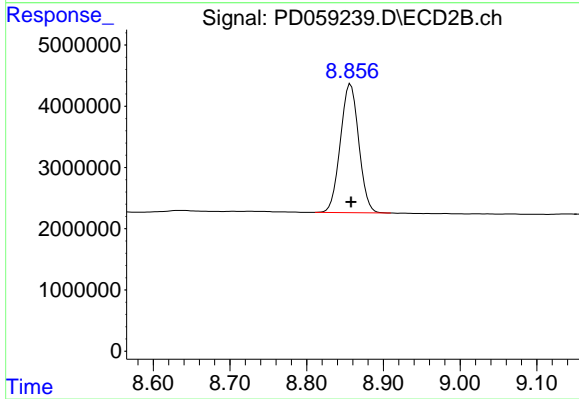
Instrument :  
ECD\_D  
ClientSampleId :  
PB131621BL



#1 Tetrachloro-m-xylene  
R.T.: 3.865 min  
Delta R.T.: 0.000 min  
Response: 38273209  
Conc: 22.65 ng/ml



#28 Decachlorobiphenyl  
R.T.: 7.837 min  
Delta R.T.: 0.000 min  
Response: 21302477  
Conc: 22.87 ng/ml



#28 Decachlorobiphenyl  
R.T.: 8.857 min  
Delta R.T.: 0.000 min  
Response: 35113436  
Conc: 22.45 ng/ml