

Data Path : Z:\pestpcbsrv\HPCHEM1\ECD_D\Data\PD091720\
 Data File : PD059243.D
 Signal(s) : Signal #1: ECD1A.ch Signal #2: ECD2B.ch
 Acq On : 16 Sep 2020 10:32
 Operator : DD\AJ
 Sample : L3971-11
 Misc :
 ALS Vial : 12 Sample Multiplier: 1

Instrument :
 ECD_D
 ClientSampleId :
 PT-CHLR-WP

Integration File signal 1: autoint1.e
 Integration File signal 2: autoint2.e
 Quant Time: Sep 17 01:20:33 2020
 Quant Method : Z:\pestpcbsrv\HPCHEM1\ECD_D\Method\PD091620.M
 Quant Title : GC Extractables
 QLast Update : Wed Sep 16 03:41:41 2020
 Response via : Initial Calibration
 Integrator: ChemStation

Volume Inj. : 2 µl
 Signal #1 Phase : ZB-MR2 Signal #2 Phase: ZB-MR1
 Signal #1 Info : 30M x 0.32mm x0.2 Signal #2 Info : 30M x 0.32mm x 0.50µm

Compound	RT#1	RT#2	Resp#1	Resp#2	ng/ml	ng/ml

System Monitoring Compounds						
1) SA Tetrachlo...	3.202	3.865	37902788	40210073	42.054	23.800 #
28) SA Decachlor...	7.838	8.859	22656105	36910431	24.320	23.595
Target Compounds						
23) Chlordane-1	4.033	4.841	57429246	126.6E6	1990.740	1804.689
24) Chlordane-2	4.517	5.305	61087384	123.5E6	1772.446	1717.182
25) Chlordane-3	5.065	5.944	232.6E6	527.3E6	2279.158	1975.307
26) Chlordane-4	5.120	6.018	204.1E6	599.8E6	2099.239	1870.837
27) Chlordane-5	5.935	6.814	61202150	110.9E6	1799.966	1936.713

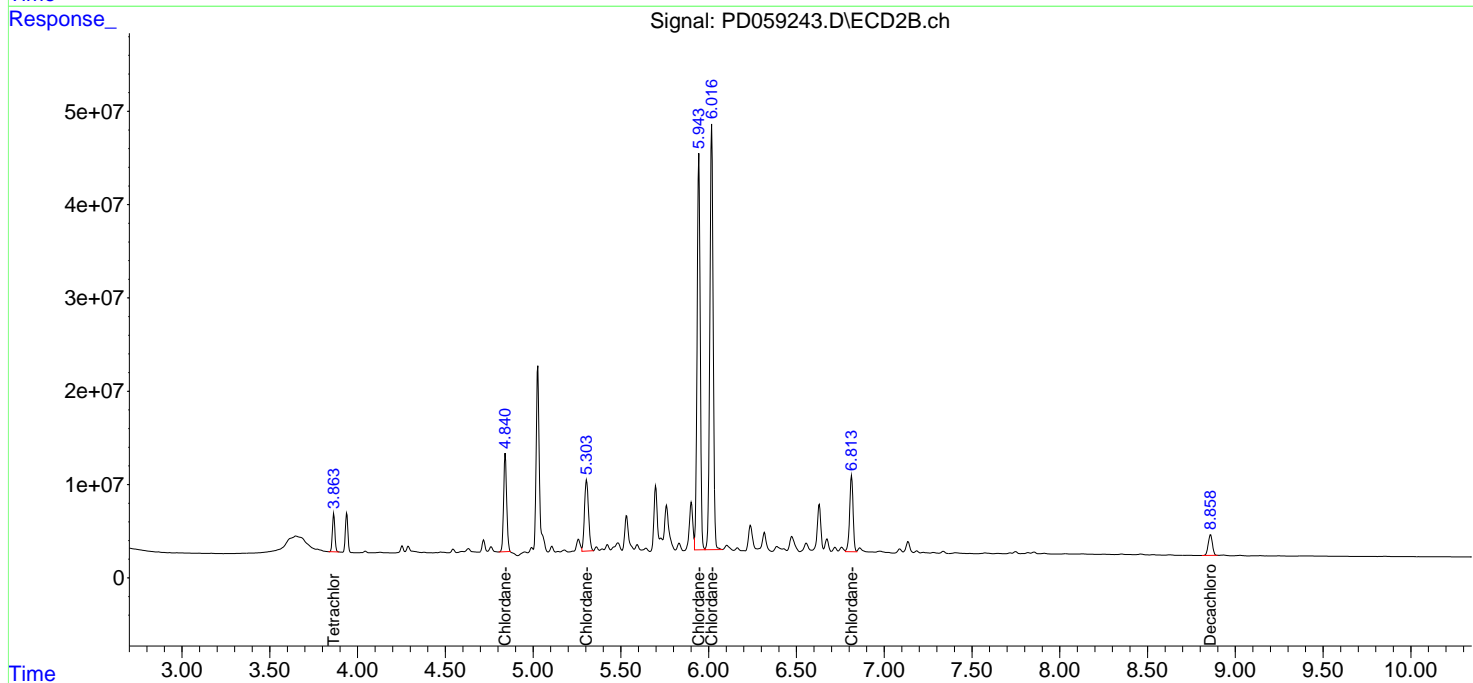
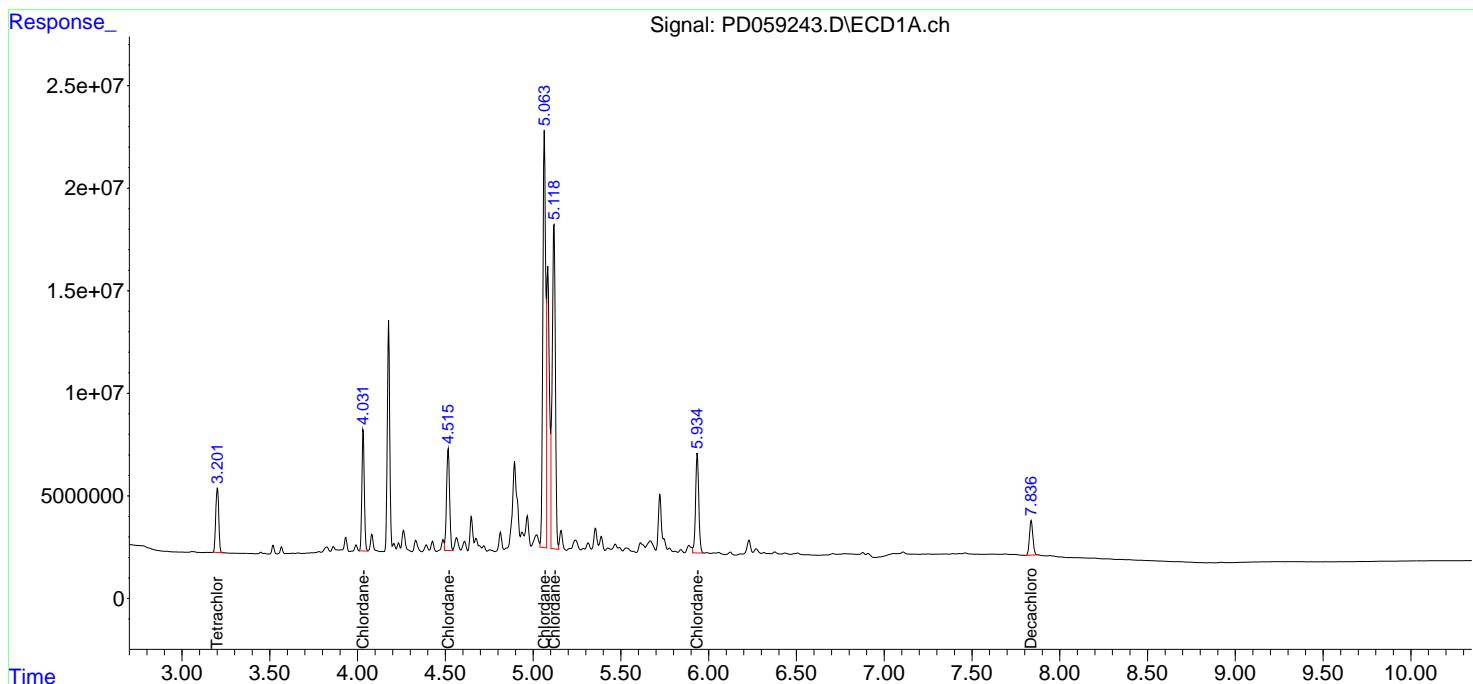
(f)=RT Delta > 1/2 Window (#)=Amounts differ by > 25% (m)=manual int.

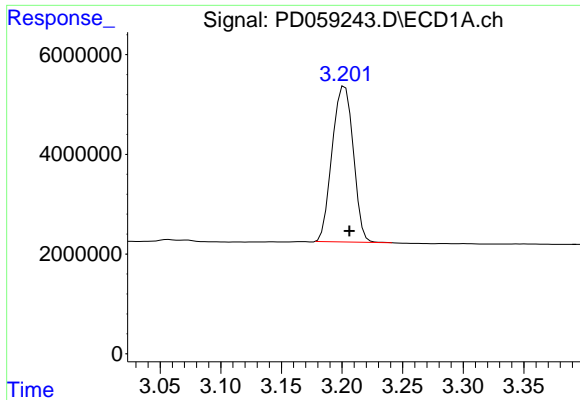
Data Path : Z:\pestpcbsrv\HPCHEM1\ECD_D\Data\PD091720\
 Data File : PD059243.D
 Signal(s) : Signal #1: ECD1A.ch Signal #2: ECD2B.ch
 Acq On : 16 Sep 2020 10:32
 Operator : DD\AJ
 Sample : L3971-11
 Misc :
 ALS Vial : 12 Sample Multiplier: 1

Instrument :
 ECD_D
 ClientSampled :
 PT-CHLR-WP

Integration File signal 1: autoint1.e
 Integration File signal 2: autoint2.e
 Quant Time: Sep 17 01:20:33 2020
 Quant Method : Z:\pestpcbsrv\HPCHEM1\ECD_D\Method\PD091620.M
 Quant Title : GC Extractables
 QLast Update : Wed Sep 16 03:41:41 2020
 Response via : Initial Calibration
 Integrator: ChemStation

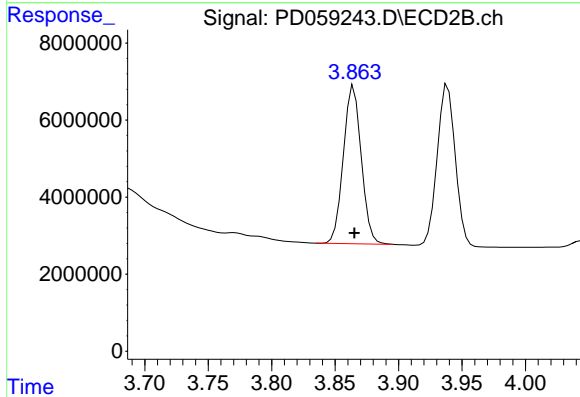
Volume Inj. : 2 µl
 Signal #1 Phase : ZB-MR2 Signal #2 Phase: ZB-MR1
 Signal #1 Info : 30M x 0.32mm x0.2 Signal #2 Info : 30M x 0.32mm x 0.50µm



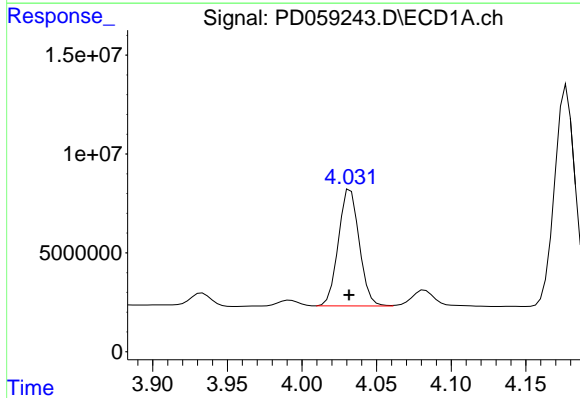


#1 Tetrachloro-m-xylene
 R.T.: 3.202 min
 Delta R.T.: -0.004 min
 Response: 37902788
 Conc: 42.05 ng/ml

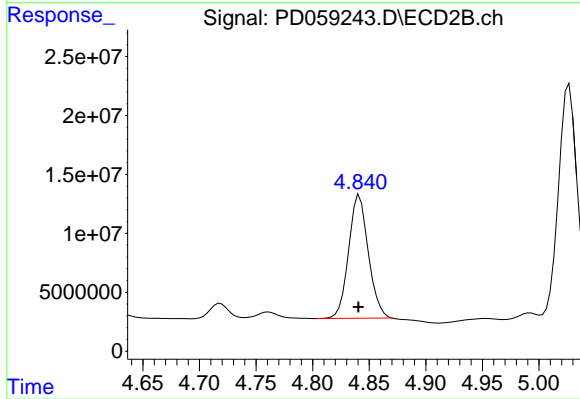
Instrument :
 ECD_D
 ClientSampleId :
 PT-CHLR-WP



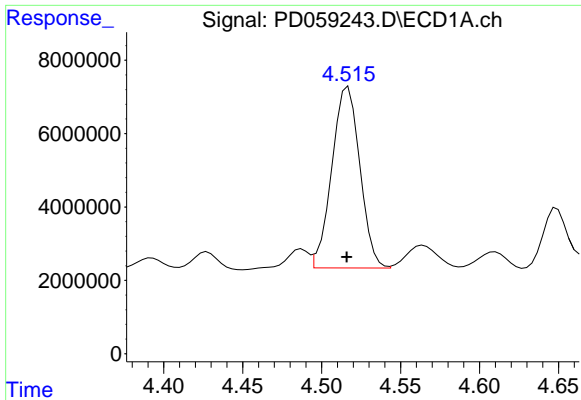
#1 Tetrachloro-m-xylene
 R.T.: 3.865 min
 Delta R.T.: 0.000 min
 Response: 40210073
 Conc: 23.80 ng/ml



#23 Chlordane-1
 R.T.: 4.033 min
 Delta R.T.: 0.001 min
 Response: 57429246
 Conc: 1990.74 ng/ml



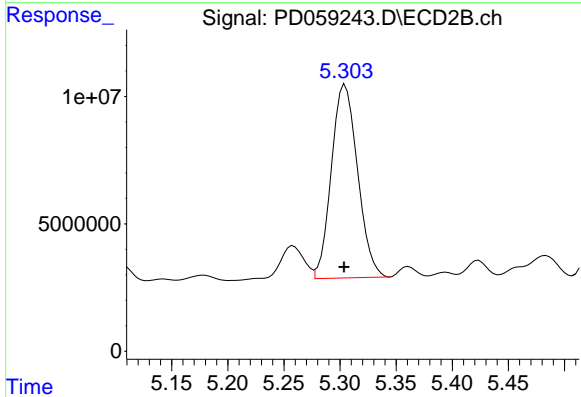
#23 Chlordane-1
 R.T.: 4.841 min
 Delta R.T.: 0.000 min
 Response: 126599356
 Conc: 1804.69 ng/ml



#24 Chlordane-2

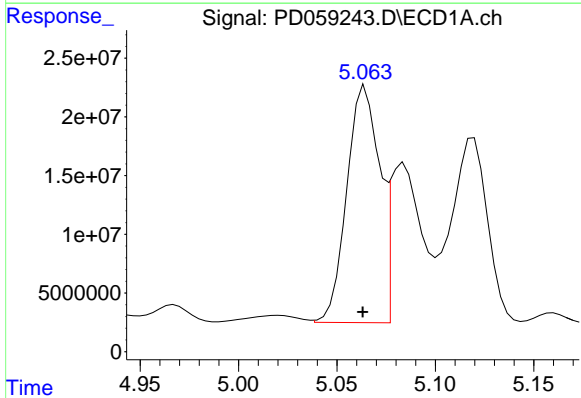
R.T.: 4.517 min
 Delta R.T.: 0.000 min
 Response: 61087384
 Conc: 1772.45 ng/ml

Instrument :
 ECD_D
 ClientSampled :
 PT-CHLR-WP



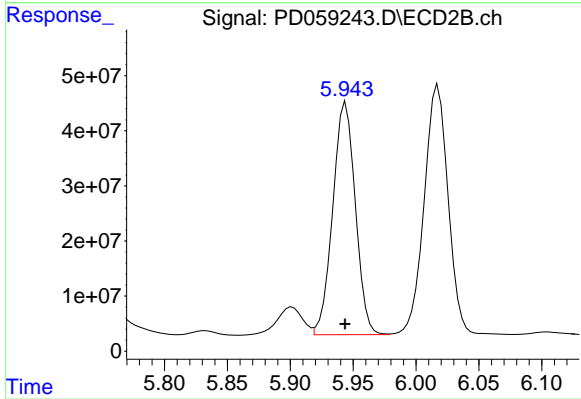
#24 Chlordane-2

R.T.: 5.305 min
 Delta R.T.: 0.000 min
 Response: 123460385
 Conc: 1717.18 ng/ml



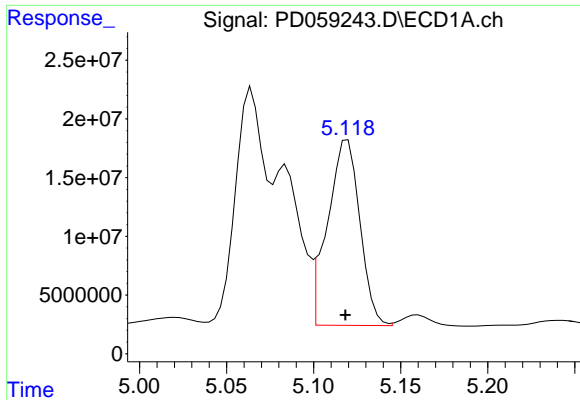
#25 Chlordane-3

R.T.: 5.065 min
 Delta R.T.: 0.001 min
 Response: 232648009
 Conc: 2279.16 ng/ml



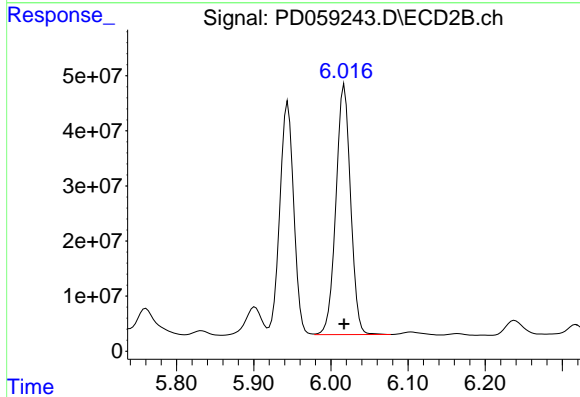
#25 Chlordane-3

R.T.: 5.944 min
 Delta R.T.: 0.000 min
 Response: 527318796
 Conc: 1975.31 ng/ml

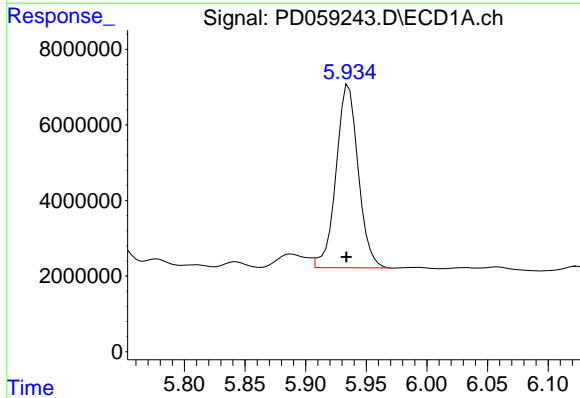


#26 Chlordane-4
 R.T.: 5.120 min
 Delta R.T.: 0.001 min
 Response: 204083060
 Conc: 2099.24 ng/ml

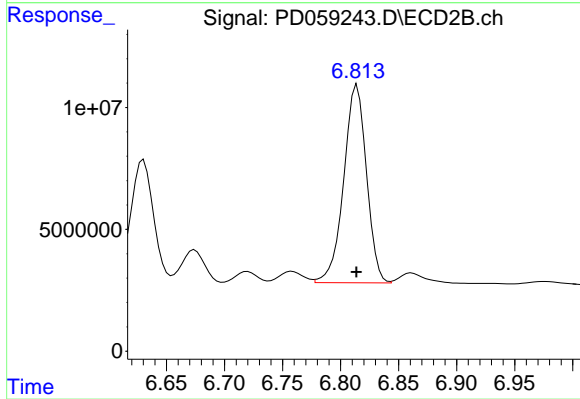
Instrument :
 ECD_D
 ClientSampleId :
 PT-CHLR-WP



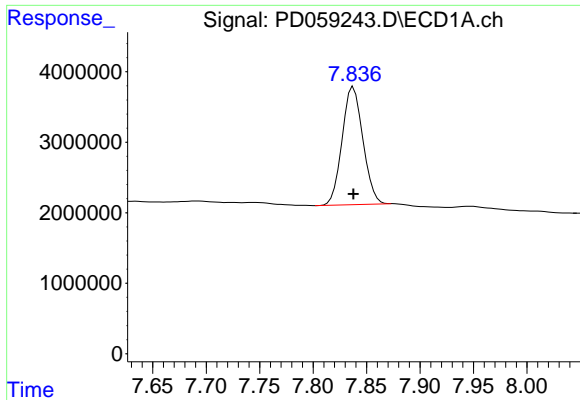
#26 Chlordane-4
 R.T.: 6.018 min
 Delta R.T.: 0.000 min
 Response: 599758723
 Conc: 1870.84 ng/ml



#27 Chlordane-5
 R.T.: 5.935 min
 Delta R.T.: 0.002 min
 Response: 61202150
 Conc: 1799.97 ng/ml



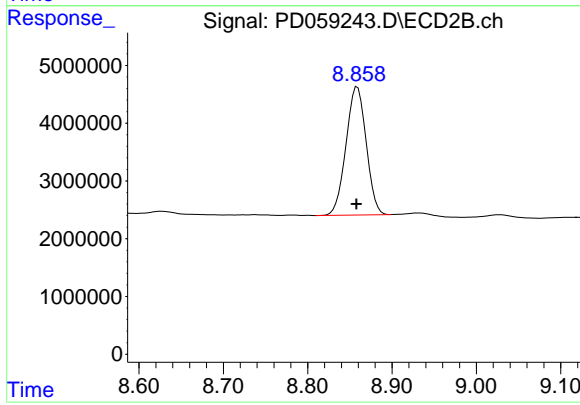
#27 Chlordane-5
 R.T.: 6.814 min
 Delta R.T.: 0.000 min
 Response: 110943531
 Conc: 1936.71 ng/ml



#28 Decachlorobiphenyl

R.T.: 7.838 min
Delta R.T.: 0.000 min
Response: 22656105
Conc: 24.32 ng/ml

Instrument :
ECD_D
ClientSampleId :
PT-CHLR-WP



#28 Decachlorobiphenyl

R.T.: 8.859 min
Delta R.T.: 0.001 min
Response: 36910431
Conc: 23.59 ng/ml