

Data Path : Z:\pestpcbsrv\HPCHEM1\ECD_D\Data\PD091720\
 Data File : PD059247.D
 Signal(s) : Signal #1: ECD1A.ch Signal #2: ECD2B.ch
 Acq On : 16 Sep 2020 12:44
 Operator : DD\AJ
 Sample : I.BLK
 Misc :
 ALS Vial : 2 Sample Multiplier: 1

Instrument :
 ECD_D
 ClientSampleId :
 I.BLK

Integration File signal 1: autoint1.e
 Integration File signal 2: autoint2.e
 Quant Time: Sep 17 01:21:22 2020
 Quant Method : Z:\pestpcbsrv\HPCHEM1\ECD_D\Method\PD091620.M
 Quant Title : GC Extractables
 QLast Update : Wed Sep 16 03:41:41 2020
 Response via : Initial Calibration
 Integrator: ChemStation

Volume Inj. : 2 µl
 Signal #1 Phase : ZB-MR2 Signal #2 Phase: ZB-MR1
 Signal #1 Info : 30M x 0.32mm x0.2 Signal #2 Info : 30M x 0.32mm x 0.50µm

Compound	RT#1	RT#2	Resp#1	Resp#2	ng/ml	ng/ml

System Monitoring Compounds						
1) SA Tetrachlo...	3.206	3.865	19578104	37381265	21.722	22.126
28) SA Decachlor...	7.838	8.858	21312393	35333915	22.877	22.587

Target Compounds

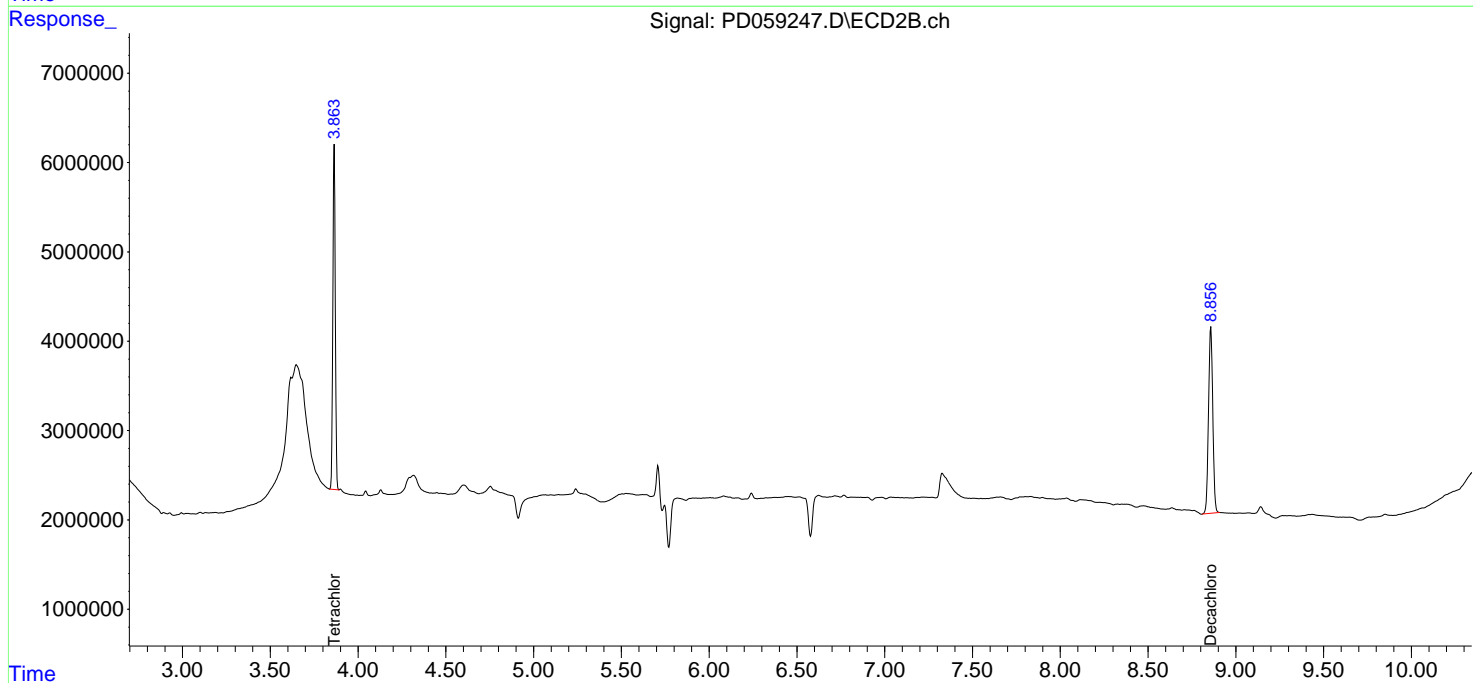
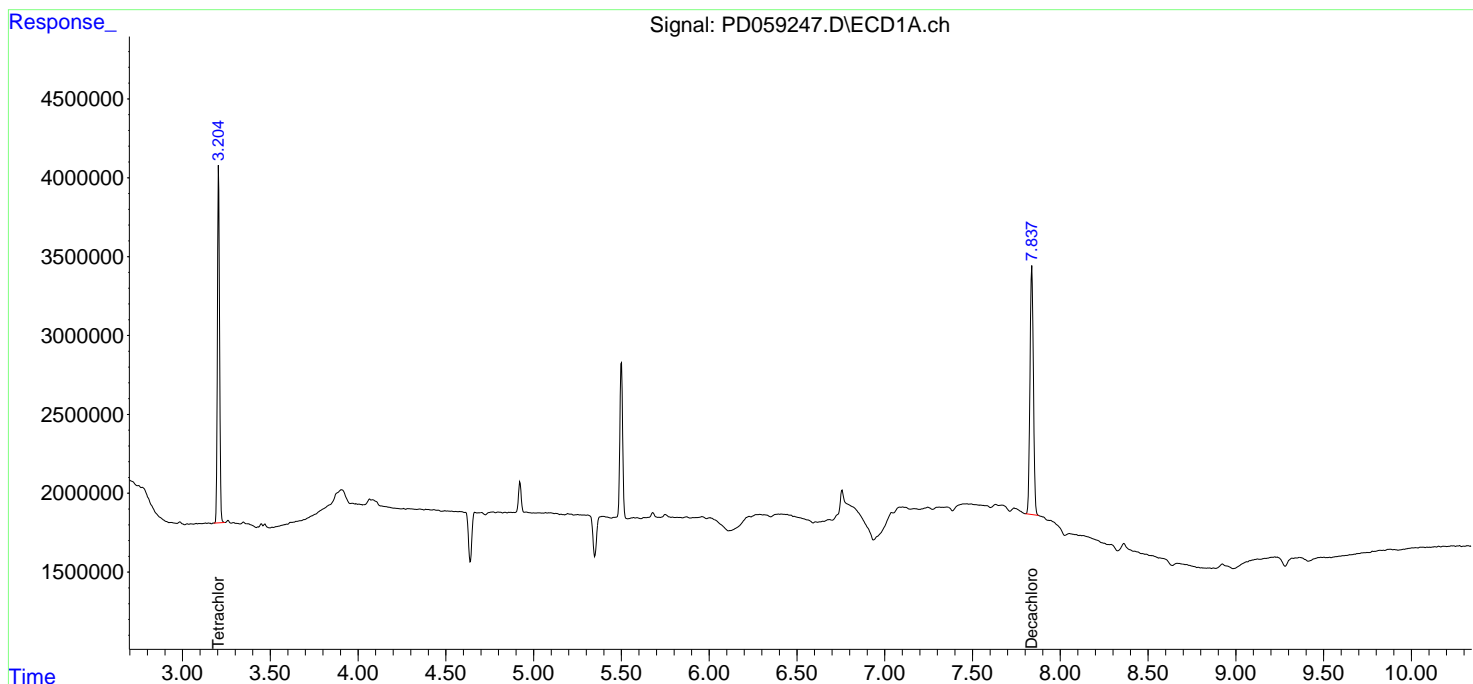
(f)=RT Delta > 1/2 Window (#)=Amounts differ by > 25% (m)=manual int.

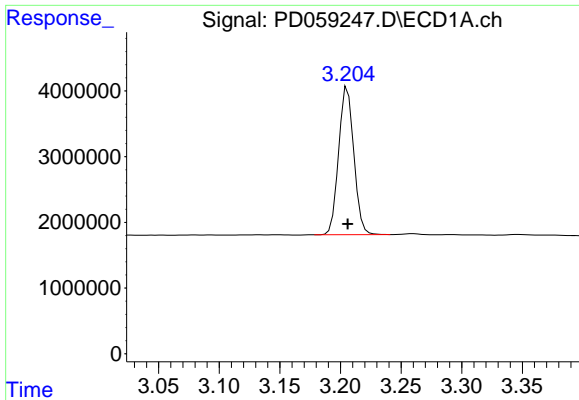
Data Path : Z:\pestpcbsrv\HPCHEM1\ECD_D\Data\PD091720\
 Data File : PD059247.D
 Signal(s) : Signal #1: ECD1A.ch Signal #2: ECD2B.ch
 Acq On : 16 Sep 2020 12:44
 Operator : DD\AJ
 Sample : I.BLK
 Misc :
 ALS Vial : 2 Sample Multiplier: 1

Instrument :
 ECD_D
 ClientSampleId :
 I.BLK

Integration File signal 1: autoint1.e
 Integration File signal 2: autoint2.e
 Quant Time: Sep 17 01:21:22 2020
 Quant Method : Z:\pestpcbsrv\HPCHEM1\ECD_D\Method\PD091620.M
 Quant Title : GC Extractables
 QLast Update : Wed Sep 16 03:41:41 2020
 Response via : Initial Calibration
 Integrator: ChemStation

Volume Inj. : 2 µl
 Signal #1 Phase : ZB-MR2 Signal #2 Phase: ZB-MR1
 Signal #1 Info : 30M x 0.32mm x 0.2 Signal #2 Info : 30M x 0.32mm x 0.50µm

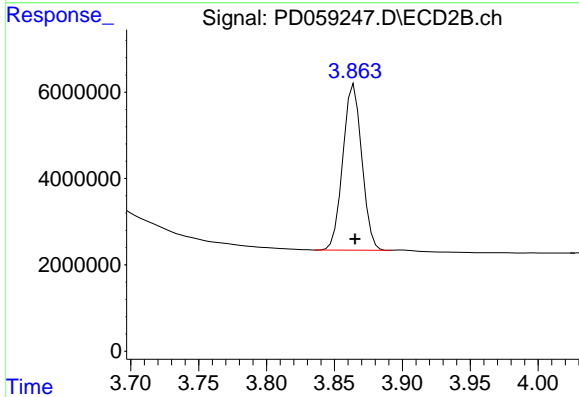




#1 Tetrachloro-m-xylene

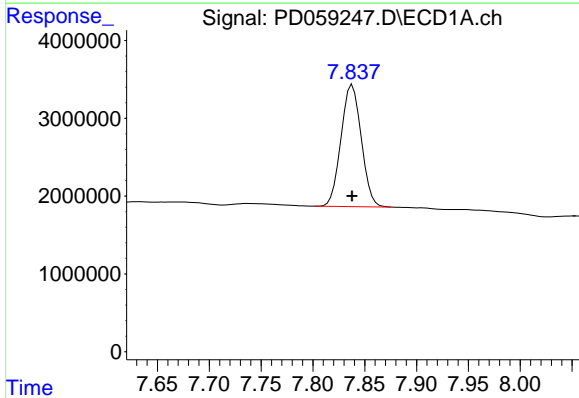
R.T.: 3.206 min
Delta R.T.: 0.000 min
Response: 19578104
Conc: 21.72 ng/ml

Instrument :
ECD_D
ClientSampled :
I.BLK



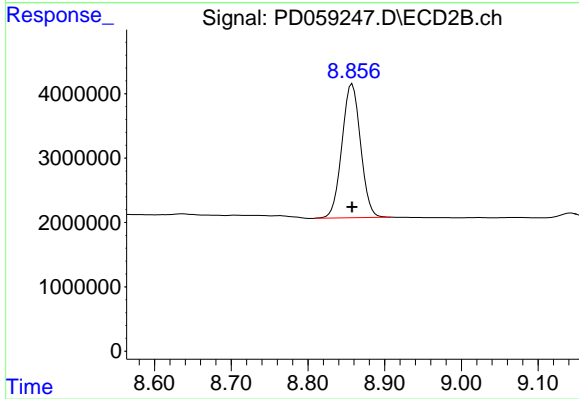
#1 Tetrachloro-m-xylene

R.T.: 3.865 min
Delta R.T.: 0.000 min
Response: 37381265
Conc: 22.13 ng/ml



#28 Decachlorobiphenyl

R.T.: 7.838 min
Delta R.T.: 0.000 min
Response: 21312393
Conc: 22.88 ng/ml



#28 Decachlorobiphenyl

R.T.: 8.858 min
Delta R.T.: 0.000 min
Response: 35333915
Conc: 22.59 ng/ml