

Data Path : Z:\pestpcbsrv\HPCHEM1\ECD\_D\Data\PD091720\  
 Data File : PD059251.D  
 Signal(s) : Signal #1: ECD1A.ch Signal #2: ECD2B.ch  
 Acq On : 16 Sep 2020 13:42  
 Operator : DD\AJ  
 Sample : PB131622BS  
 Misc :  
 ALS Vial : 17 Sample Multiplier: 1

Instrument :  
 ECD\_D  
 ClientSampleId :  
 PB131622BS

Integration File signal 1: autoint1.e  
 Integration File signal 2: autoint2.e  
 Quant Time: Sep 17 01:22:00 2020  
 Quant Method : Z:\pestpcbsrv\HPCHEM1\ECD\_D\Method\PD091620.M  
 Quant Title : GC Extractables  
 QLast Update : Wed Sep 16 03:41:41 2020  
 Response via : Initial Calibration  
 Integrator: ChemStation

Volume Inj. : 2 µl  
 Signal #1 Phase : ZB-MR2 Signal #2 Phase: ZB-MR1  
 Signal #1 Info : 30M x 0.32mm x0.2 Signal #2 Info : 30M x 0.32mm x 0.50µm

Compound	RT#1	RT#2	Resp#1	Resp#2	ng/ml	ng/ml
-----						
System Monitoring Compounds						
1) SA Tetrachlo...	3.206	3.865	18815141	32992582	20.876	19.528
28) SA Decachlor...	7.839	8.859	19064894	31041955	20.465	19.844
Target Compounds						
23) Chlordane-1	4.033	4.841	5223216	11613510	181.059	165.552
24) Chlordane-2	4.517	5.304	6654496	13250570	193.080	184.299
25) Chlordane-3	5.065	5.944	18639774	48570496	182.606	181.942
26) Chlordane-4	5.120	6.018	18172932	59095035	186.930	184.336
27) Chlordane-5	5.936	6.814	6157554	10441460	181.095	182.274
-----						

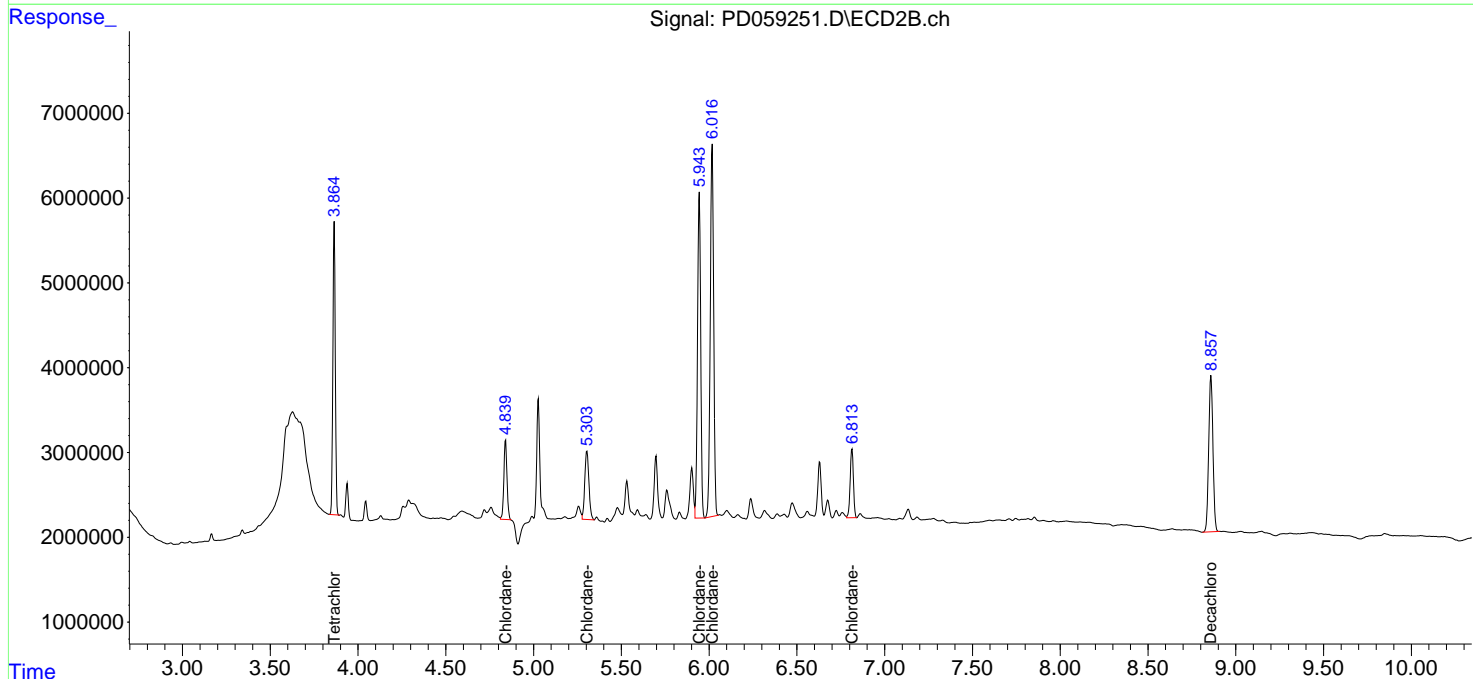
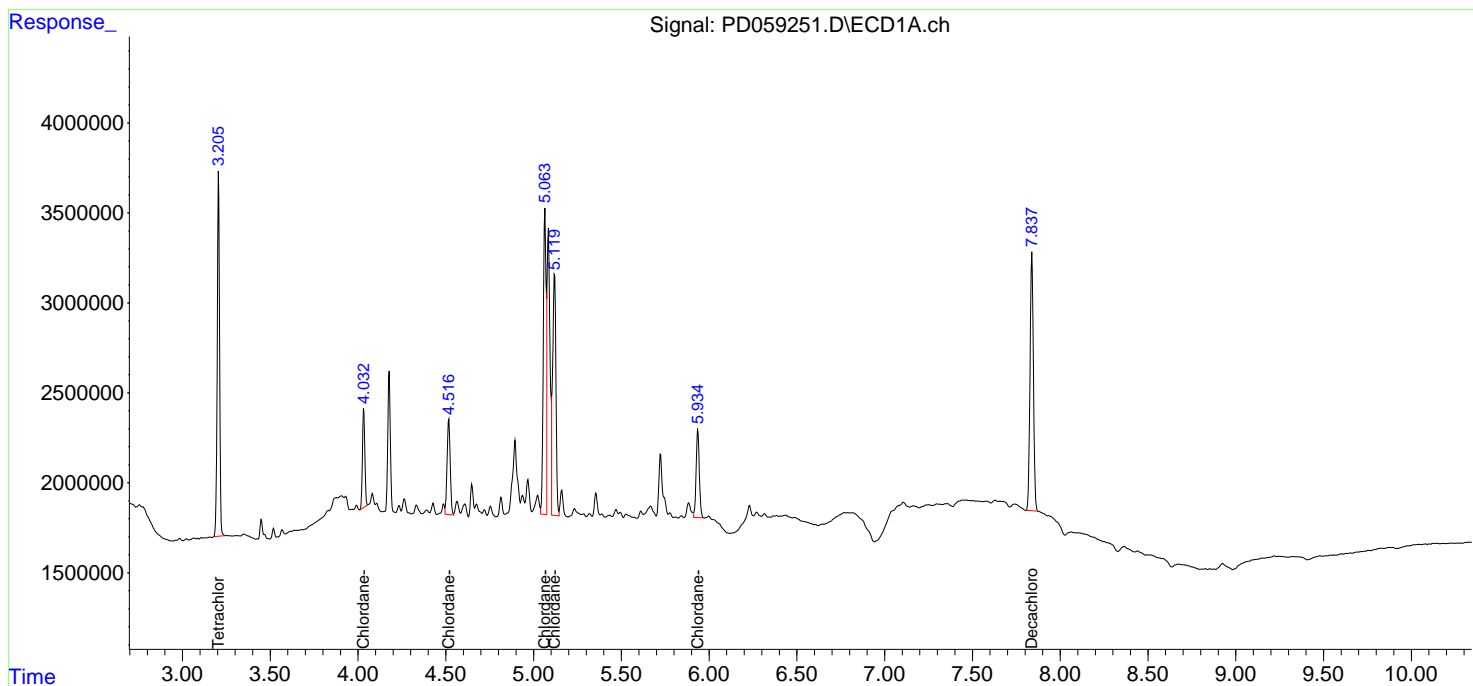
(f)=RT Delta > 1/2 Window (#)=Amounts differ by > 25% (m)=manual int.

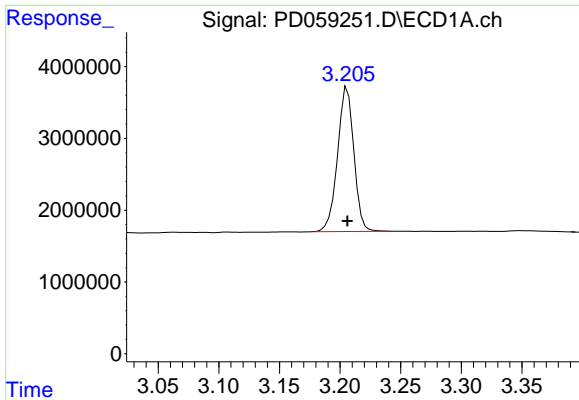
Data Path : Z:\pestpcbsrv\HPCHEM1\ECD\_D\Data\PD091720\  
 Data File : PD059251.D  
 Signal(s) : Signal #1: ECD1A.ch Signal #2: ECD2B.ch  
 Acq On : 16 Sep 2020 13:42  
 Operator : DD\AJ  
 Sample : PB131622BS  
 Misc :  
 ALS Vial : 17 Sample Multiplier: 1

Instrument :  
 ECD\_D  
 ClientSampled :  
 PB131622BS

Integration File signal 1: autoint1.e  
 Integration File signal 2: autoint2.e  
 Quant Time: Sep 17 01:22:00 2020  
 Quant Method : Z:\pestpcbsrv\HPCHEM1\ECD\_D\Method\PD091620.M  
 Quant Title : GC Extractables  
 QLast Update : Wed Sep 16 03:41:41 2020  
 Response via : Initial Calibration  
 Integrator: ChemStation

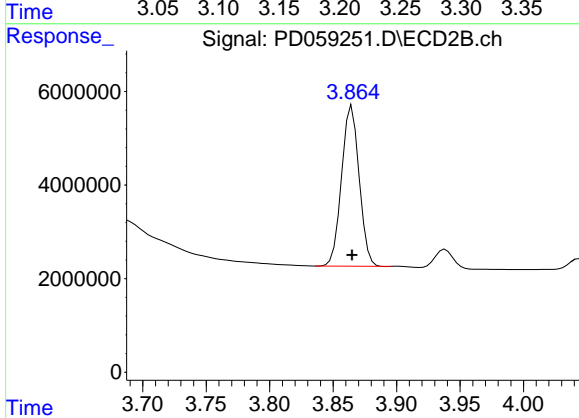
Volume Inj. : 2 µl  
 Signal #1 Phase : ZB-MR2 Signal #2 Phase: ZB-MR1  
 Signal #1 Info : 30M x 0.32mm x0.2 Signal #2 Info : 30M x 0.32mm x 0.50µm



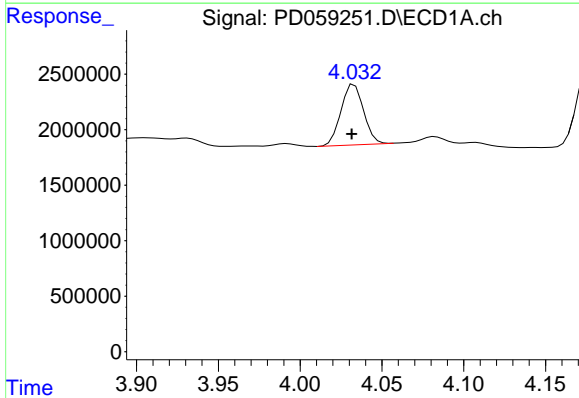


#1 Tetrachloro-m-xylene  
 R.T.: 3.206 min  
 Delta R.T.: 0.000 min  
 Response: 18815141  
 Conc: 20.88 ng/ml

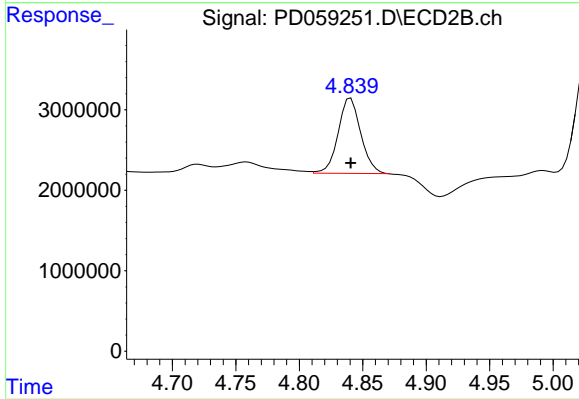
Instrument :  
 ECD\_D  
 ClientSampleId :  
 PB131622BS



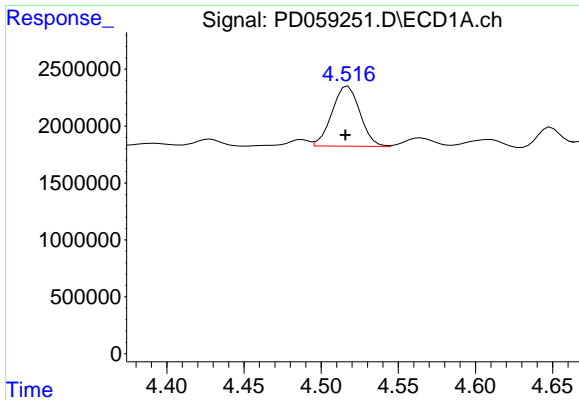
#1 Tetrachloro-m-xylene  
 R.T.: 3.865 min  
 Delta R.T.: 0.000 min  
 Response: 32992582  
 Conc: 19.53 ng/ml



#23 Chlordane-1  
 R.T.: 4.033 min  
 Delta R.T.: 0.002 min  
 Response: 5223216  
 Conc: 181.06 ng/ml

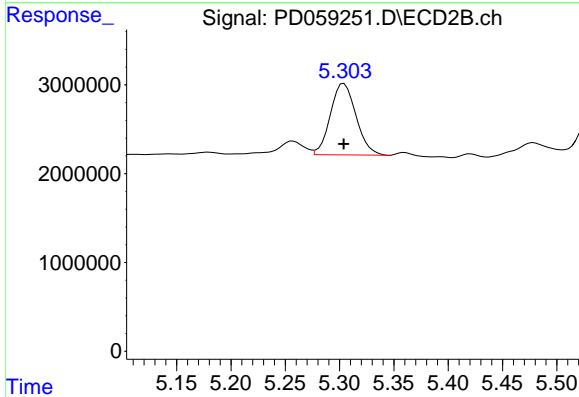


#23 Chlordane-1  
 R.T.: 4.841 min  
 Delta R.T.: 0.000 min  
 Response: 11613510  
 Conc: 165.55 ng/ml

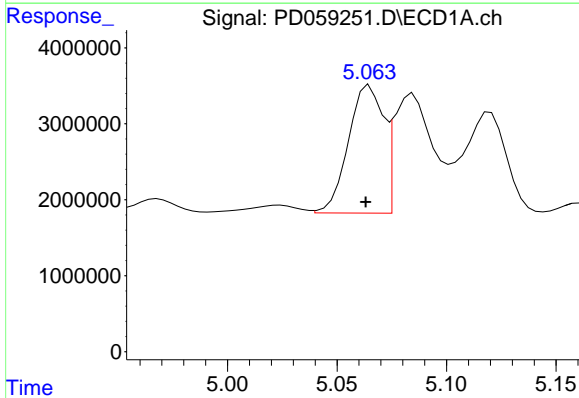


#24 Chlordane-2  
 R.T.: 4.517 min  
 Delta R.T.: 0.002 min  
 Response: 6654496  
 Conc: 193.08 ng/ml

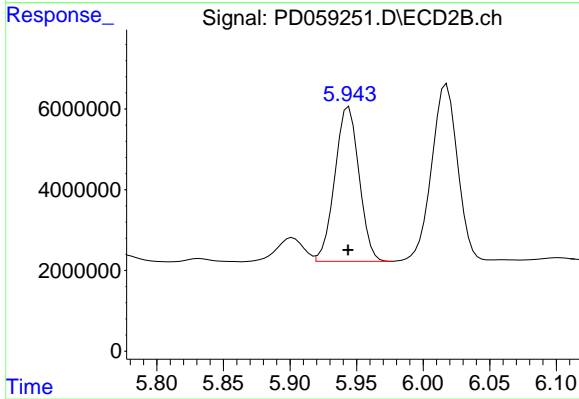
Instrument :  
 ECD\_D  
 ClientSampleId :  
 PB131622BS



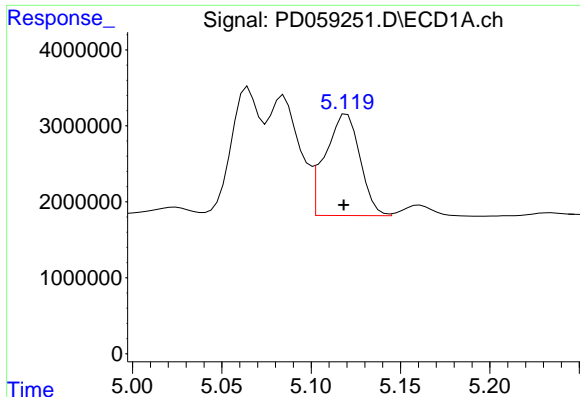
#24 Chlordane-2  
 R.T.: 5.304 min  
 Delta R.T.: 0.000 min  
 Response: 13250570  
 Conc: 184.30 ng/ml



#25 Chlordane-3  
 R.T.: 5.065 min  
 Delta R.T.: 0.002 min  
 Response: 18639774  
 Conc: 182.61 ng/ml



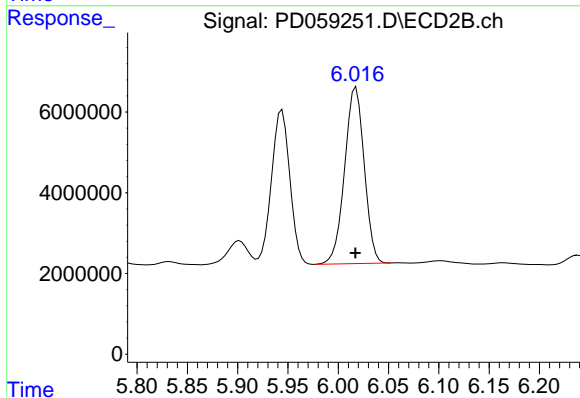
#25 Chlordane-3  
 R.T.: 5.944 min  
 Delta R.T.: 0.000 min  
 Response: 48570496  
 Conc: 181.94 ng/ml



#26 Chlordane-4

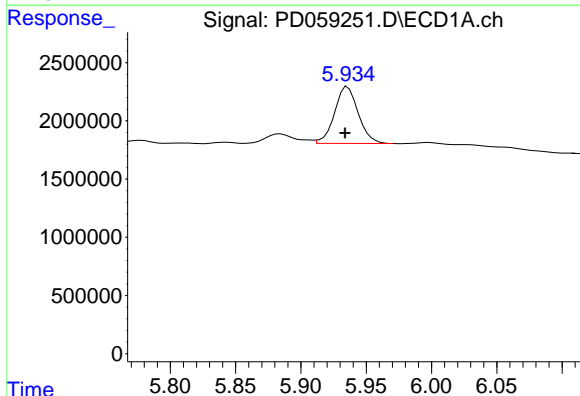
R.T.: 5.120 min  
 Delta R.T.: 0.002 min  
 Response: 18172932  
 Conc: 186.93 ng/ml

Instrument :  
 ECD\_D  
 ClientSampleId :  
 PB131622BS



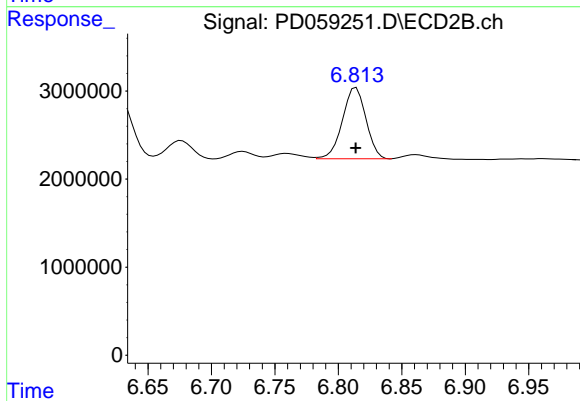
#26 Chlordane-4

R.T.: 6.018 min  
 Delta R.T.: 0.000 min  
 Response: 59095035  
 Conc: 184.34 ng/ml



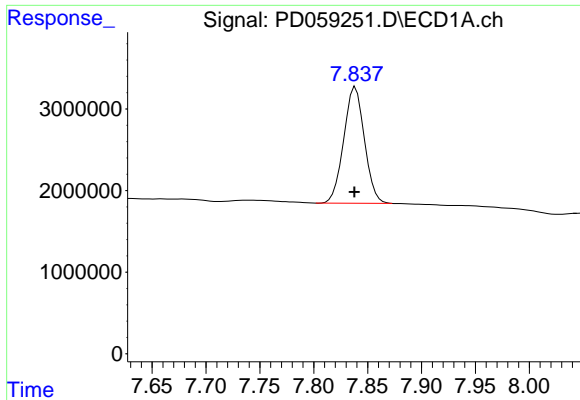
#27 Chlordane-5

R.T.: 5.936 min  
 Delta R.T.: 0.002 min  
 Response: 6157554  
 Conc: 181.09 ng/ml



#27 Chlordane-5

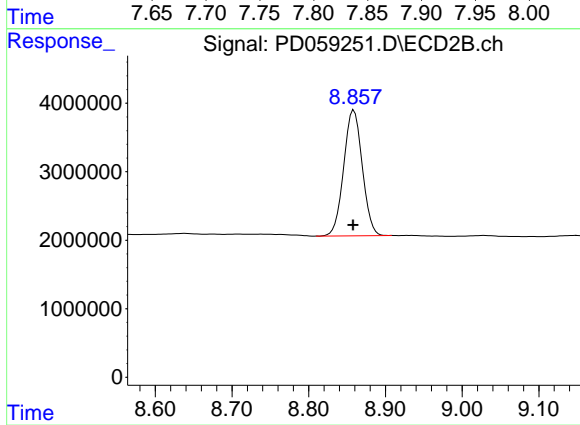
R.T.: 6.814 min  
 Delta R.T.: 0.000 min  
 Response: 10441460  
 Conc: 182.27 ng/ml



#28 Decachlorobiphenyl

R.T.: 7.839 min  
Delta R.T.: 0.000 min  
Response: 19064894  
Conc: 20.46 ng/ml

Instrument :  
ECD\_D  
ClientSampleId :  
PB131622BS



#28 Decachlorobiphenyl

R.T.: 8.859 min  
Delta R.T.: 0.001 min  
Response: 31041955  
Conc: 19.84 ng/ml