

Data Path : Z:\pestpcbsrv\HPCHEM1\ECD\_D\Data\PD091722\  
 Data File : PD071909.D  
 Signal(s) : Signal #1: ECD1A.ch Signal #2: ECD2B.ch  
 Acq On : 15 Sep 2022 15:33  
 Operator : AR\AJ  
 Sample : I.BLK  
 Misc :  
 ALS Vial : 2 Sample Multiplier: 1

Instrument :  
 ECD\_D  
 ClientSampleId :  
 I.BLK

Integration File signal 1: autoint1.e  
 Integration File signal 2: autoint2.e  
 Quant Time: Sep 16 01:08:15 2022  
 Quant Method : Z:\pestpcbsrv\HPCHEM1\ECD\_D\Method\PD091022.M  
 Quant Title : GC Extractables  
 QLast Update : Sat Sep 10 22:11:50 2022  
 Response via : Initial Calibration  
 Integrator: ChemStation

Volume Inj. : 2 µl  
 Signal #1 Phase : ZB-MR2 Signal #2 Phase: ZB-MR1  
 Signal #1 Info : 30M x 0.32mm x0.2 Signal #2 Info : 30M x 0.32mm x 0.50µm

Compound	RT#1	RT#2	Resp#1	Resp#2	ng/ml	ng/ml
-----						
System Monitoring Compounds						
1) SA Tetrachlo...	2.809	3.565	46565967	591.4E6	19.043	20.609
28) SA Decachlor...	7.997	9.090	45201344	185.1E6	17.942	19.910

Target Compounds

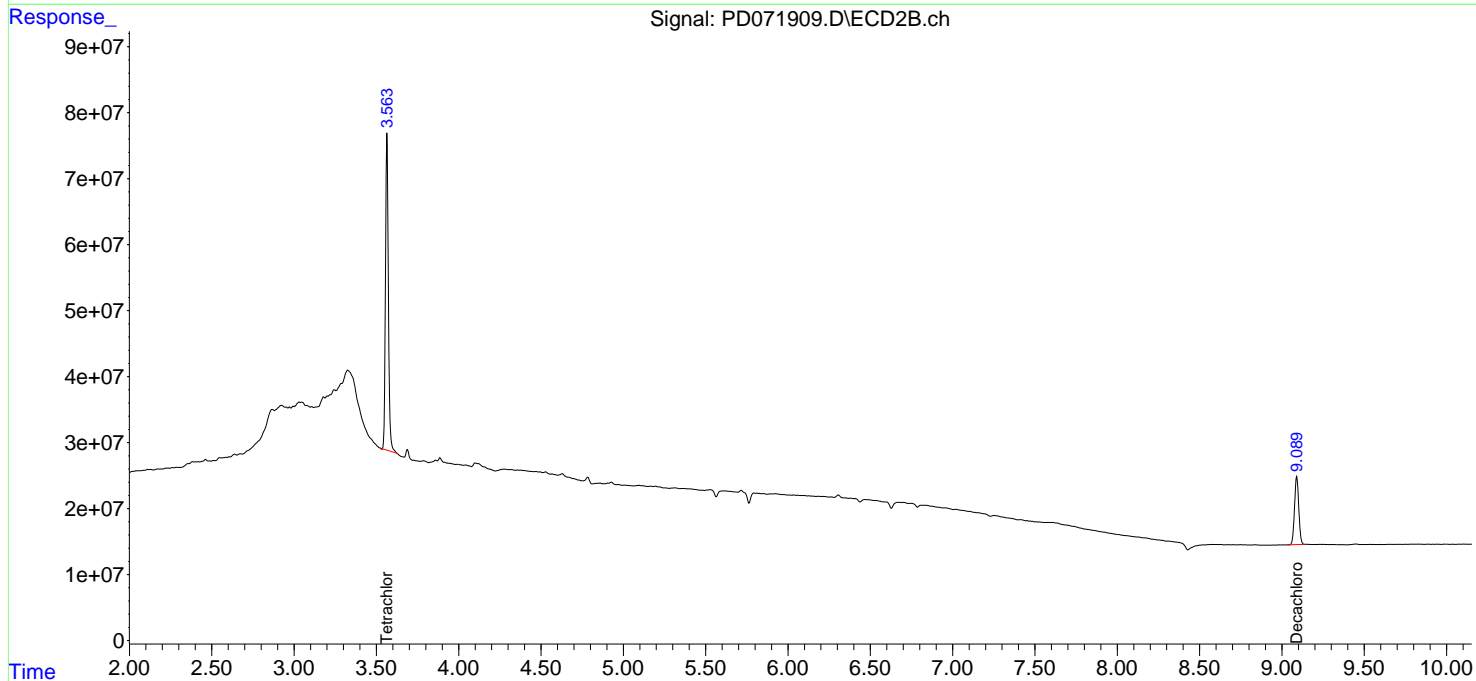
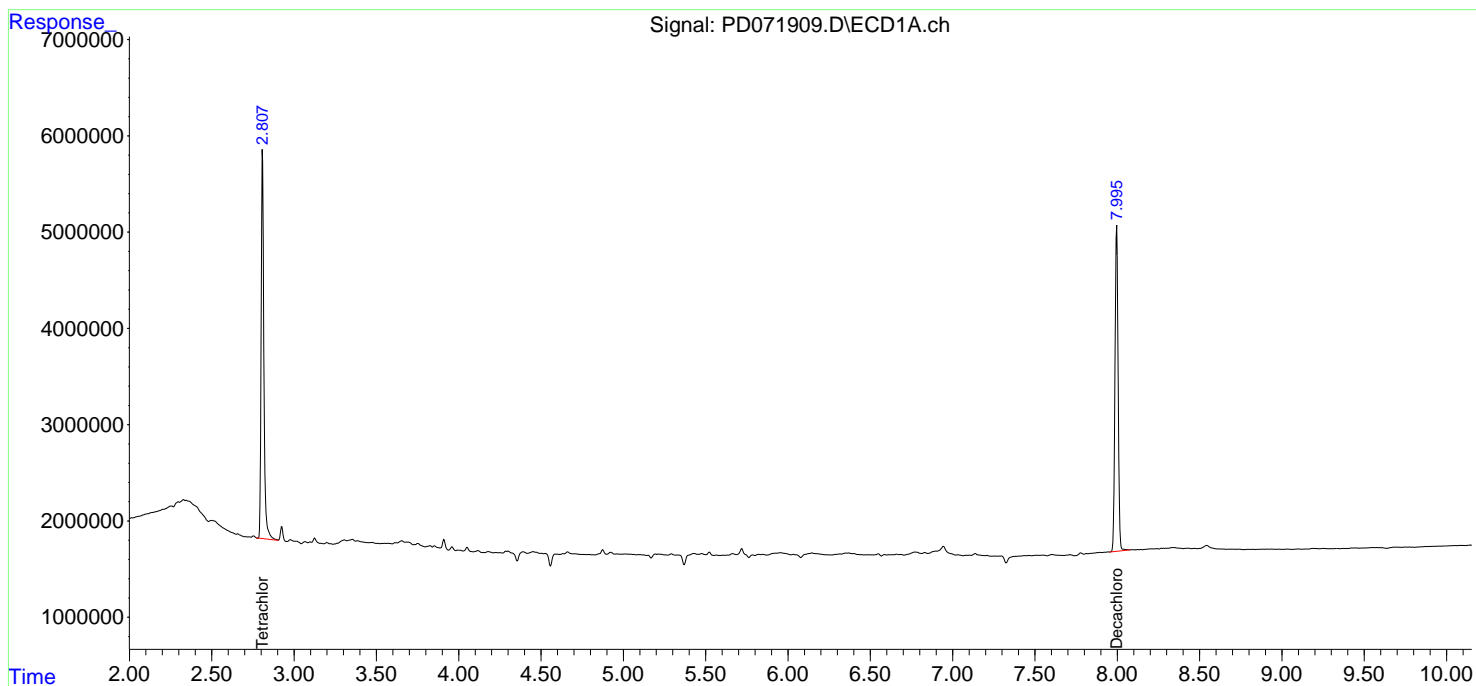
(f)=RT Delta > 1/2 Window (#)=Amounts differ by > 25% (m)=manual int.

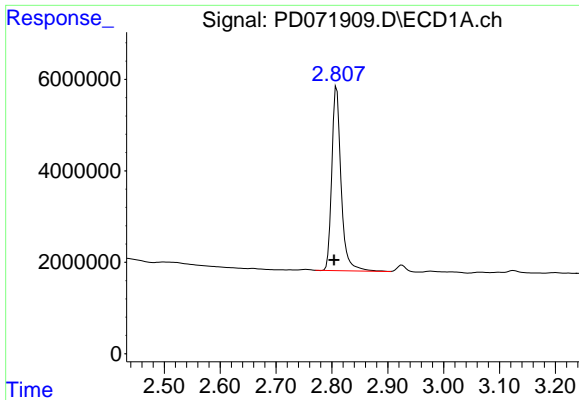
Data Path : Z:\pestpcbsrv\HPCHEM1\ECD\_D\Data\PD091722\  
 Data File : PD071909.D  
 Signal(s) : Signal #1: ECD1A.ch Signal #2: ECD2B.ch  
 Acq On : 15 Sep 2022 15:33  
 Operator : AR\AJ  
 Sample : I.BLK  
 Misc :  
 ALS Vial : 2 Sample Multiplier: 1

Instrument :  
 ECD\_D  
 ClientSampleId :  
 I.BLK

Integration File signal 1: autoint1.e  
 Integration File signal 2: autoint2.e  
 Quant Time: Sep 16 01:08:15 2022  
 Quant Method : Z:\pestpcbsrv\HPCHEM1\ECD\_D\Method\PD091022.M  
 Quant Title : GC Extractables  
 QLast Update : Sat Sep 10 22:11:50 2022  
 Response via : Initial Calibration  
 Integrator: ChemStation

Volume Inj. : 2 µl  
 Signal #1 Phase : ZB-MR2 Signal #2 Phase: ZB-MR1  
 Signal #1 Info : 30M x 0.32mm x0.2 Signal #2 Info : 30M x 0.32mm x 0.50µm

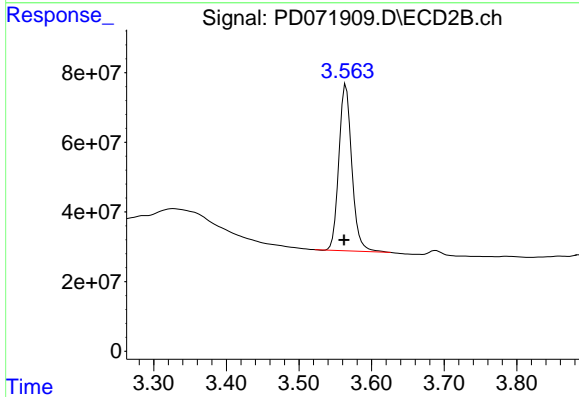




#1 Tetrachloro-m-xylene

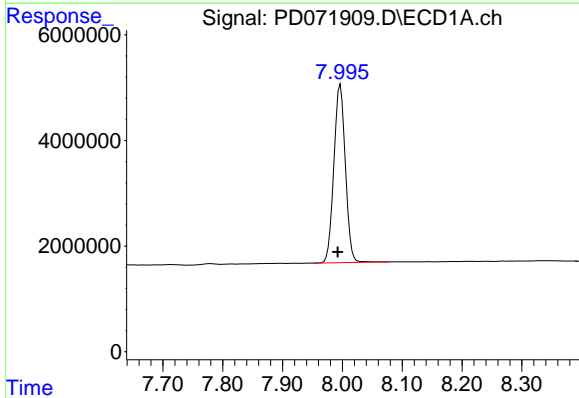
R.T.: 2.809 min  
 Delta R.T.: 0.005 min  
 Response: 46565967  
 Conc: 19.04 ng/ml

Instrument :  
 ECD\_D  
 ClientSampleId :  
 I.BLK



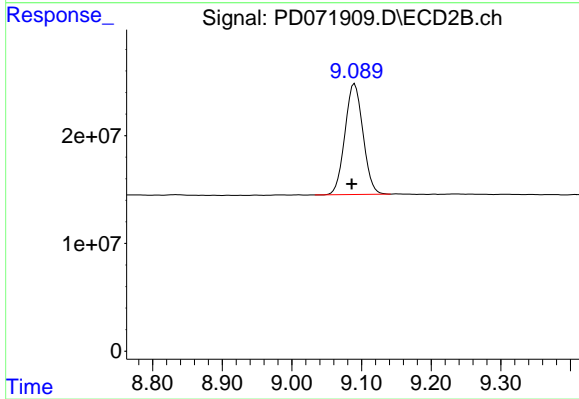
#1 Tetrachloro-m-xylene

R.T.: 3.565 min  
 Delta R.T.: 0.003 min  
 Response: 591375307  
 Conc: 20.61 ng/ml



#28 Decachlorobiphenyl

R.T.: 7.997 min  
 Delta R.T.: 0.004 min  
 Response: 45201344  
 Conc: 17.94 ng/ml



#28 Decachlorobiphenyl

R.T.: 9.090 min  
 Delta R.T.: 0.004 min  
 Response: 185101852  
 Conc: 19.91 ng/ml