

Data Path : Z:\pestpcbsrv\HPCHEM1\ECD\_D\Data\PD091722\  
 Data File : PD071911.D  
 Signal(s) : Signal #1: ECD1A.ch Signal #2: ECD2B.ch  
 Acq On : 15 Sep 2022 16:26  
 Operator : AR\AJ  
 Sample : PSTDCCC050  
 Misc :  
 ALS Vial : 4 Sample Multiplier: 1

Instrument :  
 ECD\_D  
 ClientSampleId :  
 PSTDCCC050

Integration File signal 1: autoint1.e  
 Integration File signal 2: autoint2.e  
 Quant Time: Sep 16 01:09:08 2022  
 Quant Method : Z:\pestpcbsrv\HPCHEM1\ECD\_D\Method\PD091022.M  
 Quant Title : GC Extractables  
 QLast Update : Sat Sep 10 22:11:50 2022  
 Response via : Initial Calibration  
 Integrator: ChemStation

Volume Inj. : 2 µl  
 Signal #1 Phase : ZB-MR2 Signal #2 Phase: ZB-MR1  
 Signal #1 Info : 30M x 0.32mm x0.2 Signal #2 Info : 30M x 0.32mm x 0.50µm

| Compound                    | RT#1  | RT#2  | Resp#1   | Resp#2   | ng/ml   | ng/ml  |
|-----------------------------|-------|-------|----------|----------|---------|--------|
| System Monitoring Compounds |       |       |          |          |         |        |
| 1) SA Tetrachlo...          | 2.812 | 3.565 | 128.3E6  | 1558.3E6 | 52.486  | 54.305 |
| 28) SA Decachlor...         | 8.000 | 9.092 | 113.9E6  | 462.9E6  | 45.195  | 49.786 |
| Target Compounds            |       |       |          |          |         |        |
| 2) A alpha-BHC              | 3.321 | 4.031 | 211.3E6  | 2178.5E6 | 54.841  | 54.287 |
| 3) MA gamma-BHC...          | 3.654 | 4.366 | 190.4E6  | 1766.1E6 | 54.223  | 53.793 |
| 4) MA Heptachlor            | 4.000 | 4.944 | 187.1E6  | 1259.3E6 | 50.056  | 52.119 |
| 5) MB Aldrin                | 4.284 | 5.286 | 190.9E6  | 1073.8E6 | 52.118  | 52.969 |
| 6) B beta-BHC               | 3.952 | 4.573 | 78131594 | 701.5E6  | 51.569  | 53.078 |
| 7) B delta-BHC              | 4.186 | 4.821 | 187.9E6  | 1401.2E6 | 53.319  | 59.946 |
| 8) B Heptachlo...           | 4.790 | 5.718 | 165.8E6  | 883.2E6  | 50.691  | 57.276 |
| 9) A Endosulfan I           | 5.163 | 6.105 | 153.9E6  | 791.1E6  | 48.430  | 53.662 |
| 10) B gamma-Chl...          | 5.043 | 5.972 | 170.8E6  | 868.2E6  | 50.669  | 54.031 |
| 11) B alpha-Chl...          | 5.107 | 6.051 | 166.7E6  | 833.5E6  | 50.240  | 53.422 |
| 12) B 4,4'-DDE              | 5.298 | 6.223 | 155.9E6  | 790.3E6  | 50.948  | 53.647 |
| 13) MA Dieldrin             | 5.430 | 6.383 | 164.5E6  | 820.7E6  | 49.195  | 54.149 |
| 14) MA Endrin               | 5.707 | 6.615 | 130.4E6  | 615.0E6  | 44.010  | 48.693 |
| 15) B Endosulfa...          | 6.002 | 6.841 | 130.2E6  | 639.1E6  | 47.285  | 51.615 |
| 16) A 4,4'-DDD              | 5.855 | 6.747 | 136.5E6  | 680.9E6  | 53.819  | 57.285 |
| 17) MA 4,4'-DDT             | 6.109 | 7.058 | 117.7E6  | 582.6E6  | 44.716  | 47.157 |
| 18) B Endrin al...          | 6.182 | 6.972 | 105.4E6  | 518.9E6  | 47.655  | 53.741 |
| 19) B Endosulfa...          | 6.406 | 7.204 | 129.0E6  | 595.8E6  | 48.107  | 53.423 |
| 20) A Methoxychlor          | 6.687 | 7.535 | 64081099 | 284.5E6  | 42.796  | 46.794 |
| 21) B Endrin ke...          | 6.915 | 7.697 | 158.8E6  | 680.8E6  | 52.933m | 54.742 |
| 22) Mirex                   | 7.102 | 8.158 | 110.5E6  | 426.9E6  | 46.895  | 49.295 |

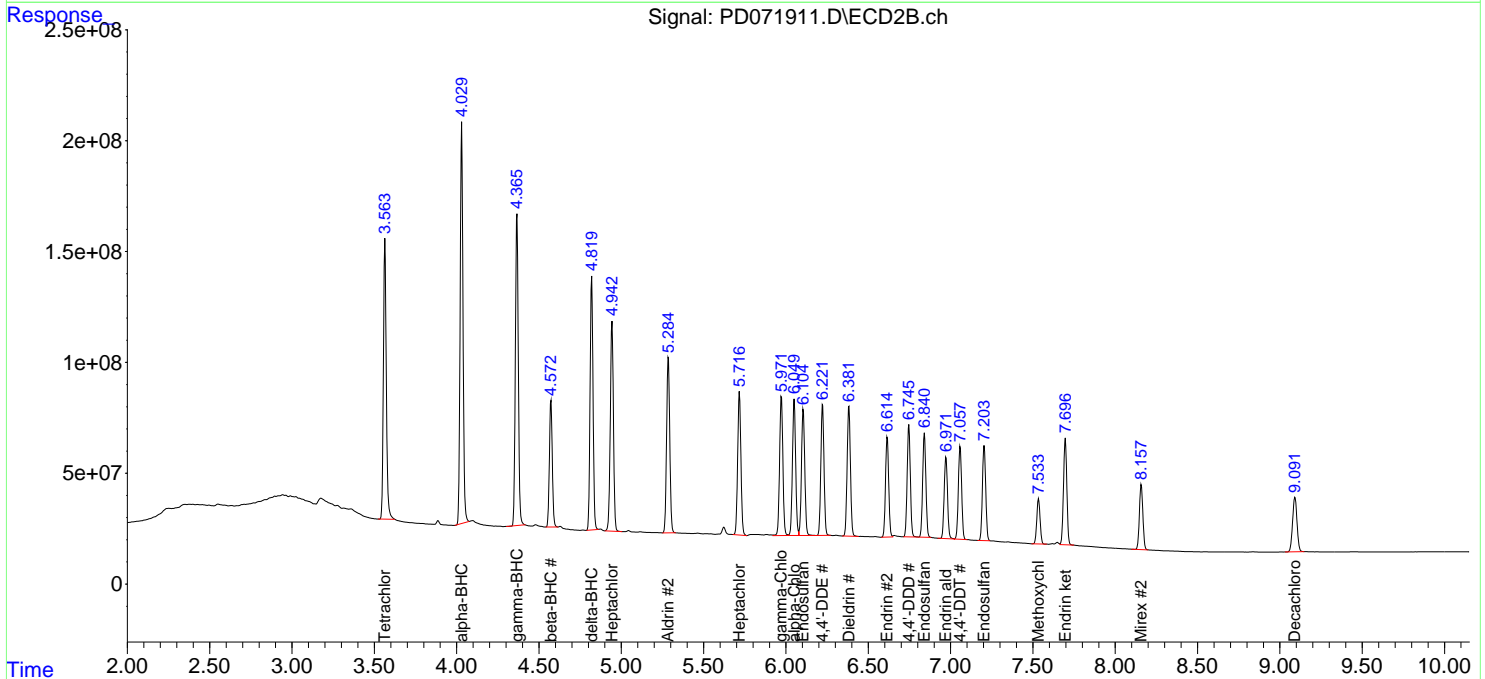
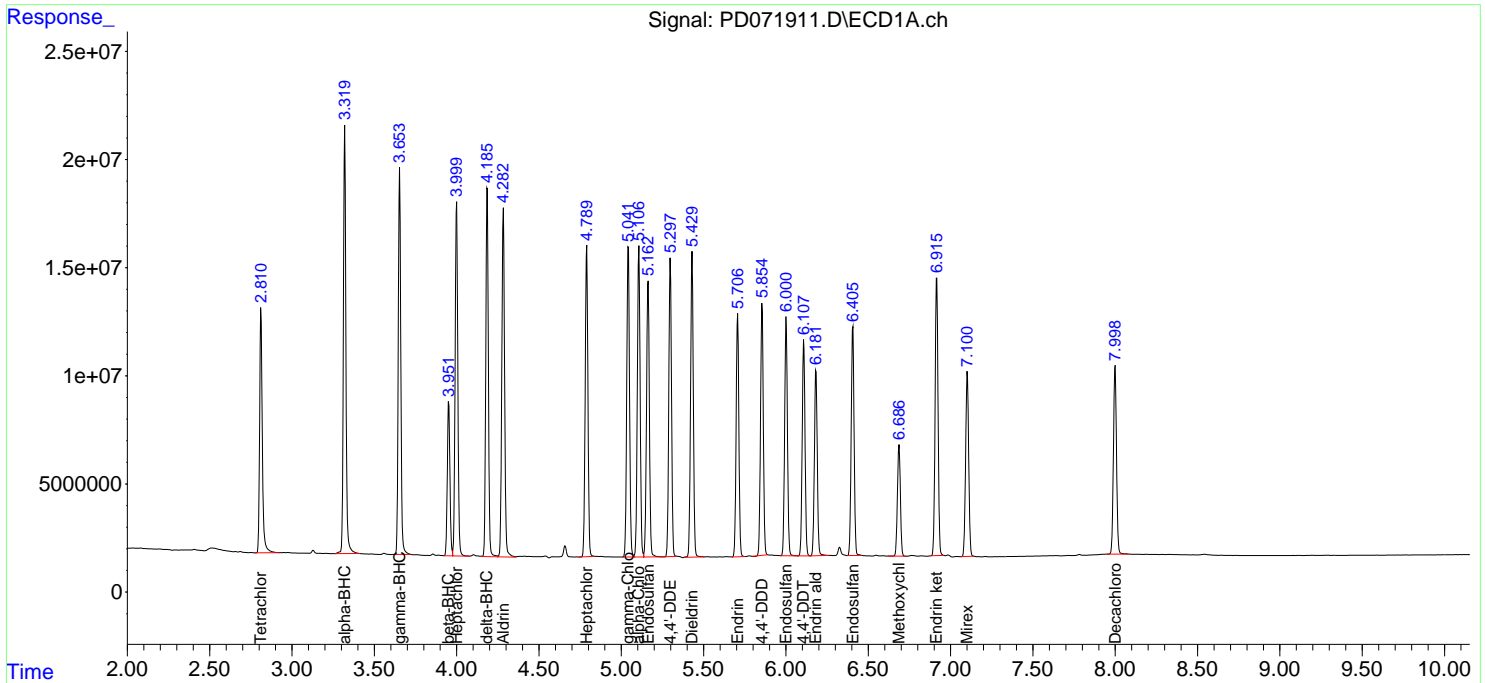
(f)=RT Delta > 1/2 Window (#)=Amounts differ by > 25% (m)=manual int.

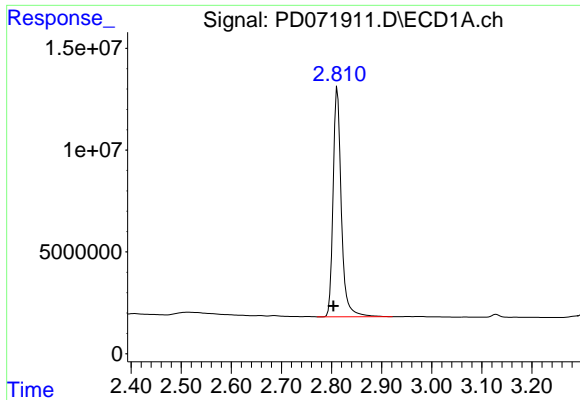
Data Path : Z:\pestpcbsrv\HPCHEM1\ECD\_D\Data\PD091722\  
 Data File : PD071911.D  
 Signal(s) : Signal #1: ECD1A.ch Signal #2: ECD2B.ch  
 Acq On : 15 Sep 2022 16:26  
 Operator : AR\AJ  
 Sample : PSTDCCC050  
 Misc :  
 ALS Vial : 4 Sample Multiplier: 1

Instrument :  
 ECD\_D  
 ClientSampleId :  
 PSTDCCC050

Integration File signal 1: autoint1.e  
 Integration File signal 2: autoint2.e  
 Quant Time: Sep 16 01:09:08 2022  
 Quant Method : Z:\pestpcbsrv\HPCHEM1\ECD\_D\Method\PD091022.M  
 Quant Title : GC Extractables  
 QLast Update : Sat Sep 10 22:11:50 2022  
 Response via : Initial Calibration  
 Integrator: ChemStation

Volume Inj. : 2 µl  
 Signal #1 Phase : ZB-MR2 Signal #2 Phase: ZB-MR1  
 Signal #1 Info : 30M x 0.32mm x0.2 Signal #2 Info : 30M x 0.32mm x 0.50µm

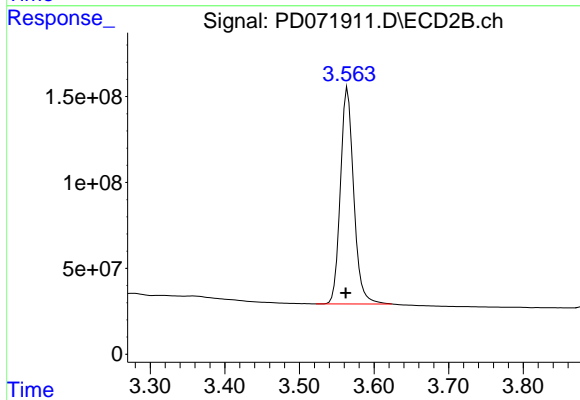




#1 Tetrachloro-m-xylene

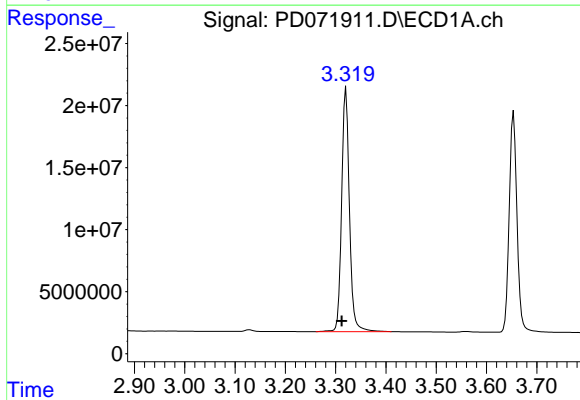
R.T.: 2.812 min  
 Delta R.T.: 0.008 min  
 Response: 128343471  
 Conc: 52.49 ng/ml

Instrument :  
 ECD\_D  
 ClientSampleId :  
 PSTDCCC050



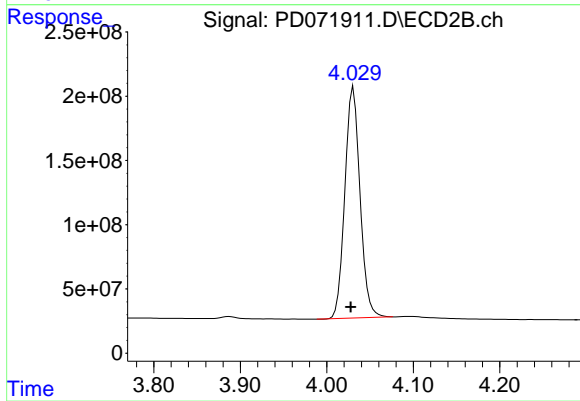
#1 Tetrachloro-m-xylene

R.T.: 3.565 min  
 Delta R.T.: 0.003 min  
 Response: 1558318879  
 Conc: 54.31 ng/ml



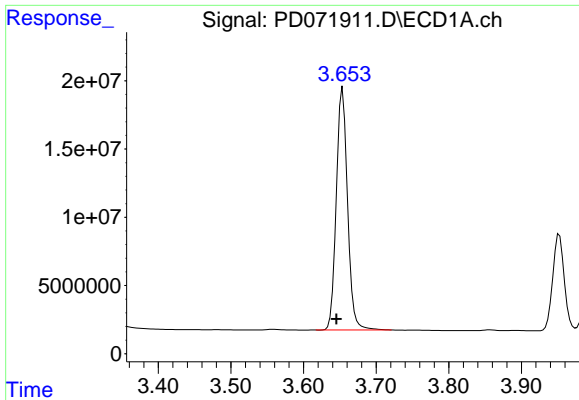
#2 alpha-BHC

R.T.: 3.321 min  
 Delta R.T.: 0.008 min  
 Response: 211347748  
 Conc: 54.84 ng/ml



#2 alpha-BHC

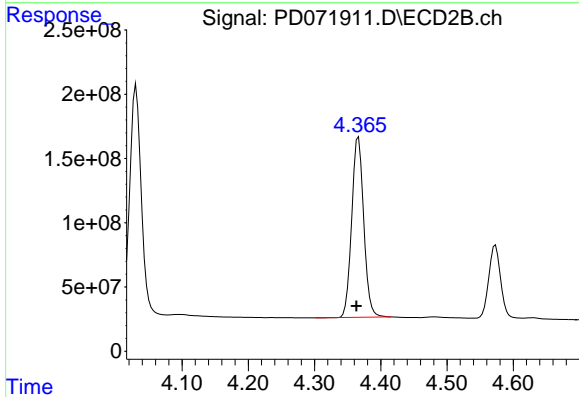
R.T.: 4.031 min  
 Delta R.T.: 0.003 min  
 Response: 2178462699  
 Conc: 54.29 ng/ml



#3 gamma-BHC (Lindane)

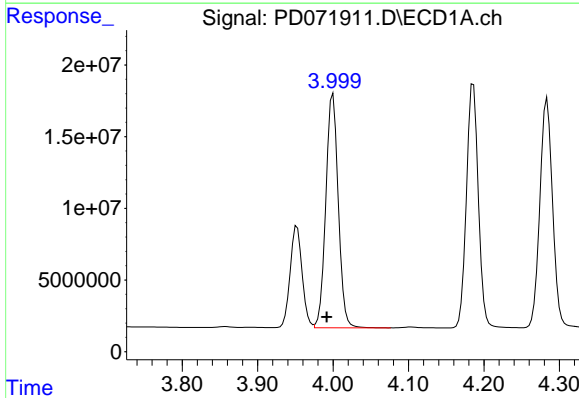
R.T.: 3.654 min  
 Delta R.T.: 0.008 min  
 Response: 190382168  
 Conc: 54.22 ng/ml

Instrument :  
 ECD\_D  
 ClientSampleId :  
 PSTDCCC050



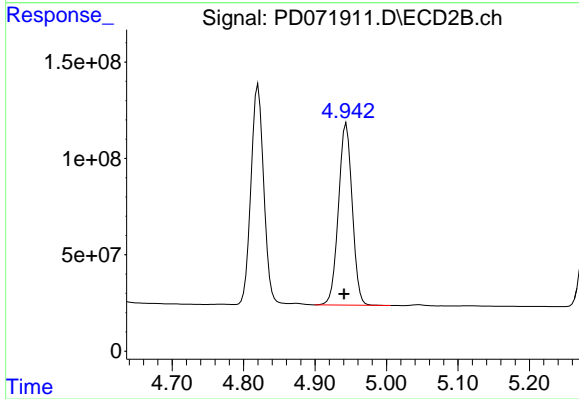
#3 gamma-BHC (Lindane)

R.T.: 4.366 min  
 Delta R.T.: 0.003 min  
 Response: 1766146163  
 Conc: 53.79 ng/ml



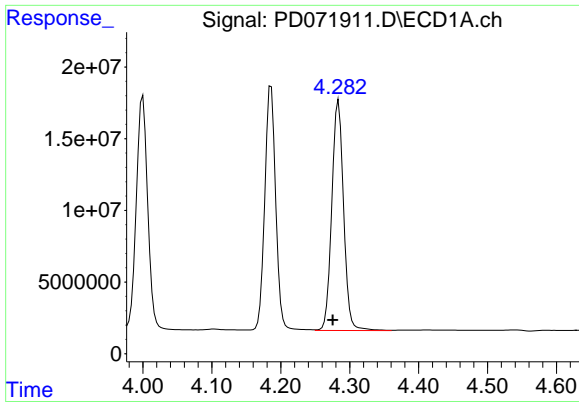
#4 Heptachlor

R.T.: 4.000 min  
 Delta R.T.: 0.008 min  
 Response: 187145198  
 Conc: 50.06 ng/ml



#4 Heptachlor

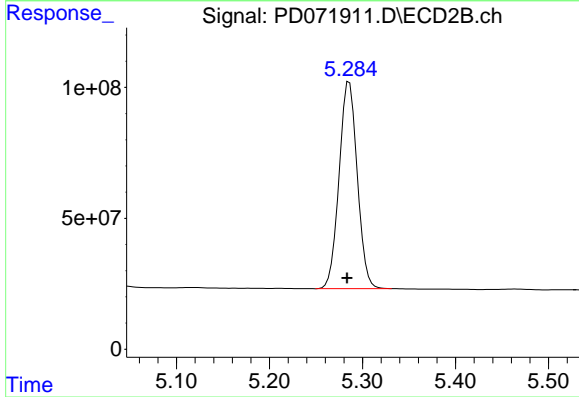
R.T.: 4.944 min  
 Delta R.T.: 0.003 min  
 Response: 1259314768  
 Conc: 52.12 ng/ml



#5 Aldrin

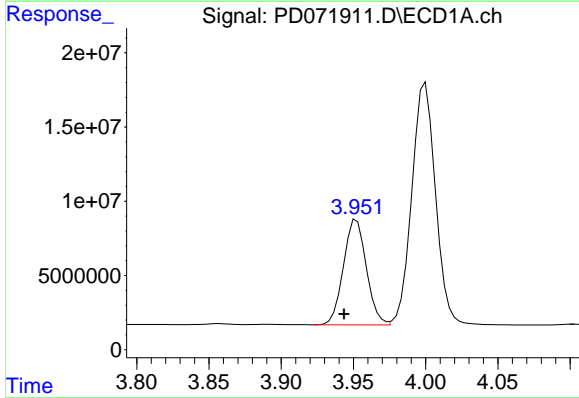
R.T.: 4.284 min  
 Delta R.T.: 0.008 min  
 Response: 190850099  
 Conc: 52.12 ng/ml

Instrument :  
 ECD\_D  
 ClientSampleId :  
 PSTDCCC050



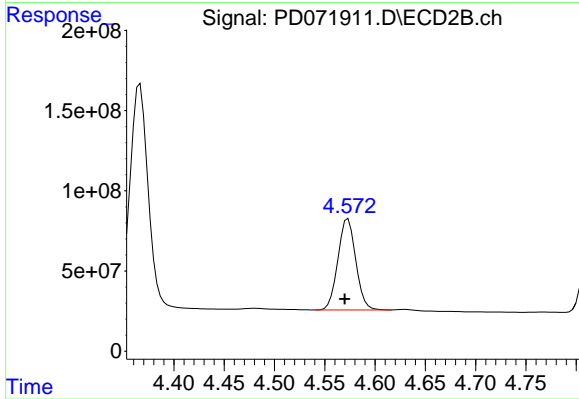
#5 Aldrin

R.T.: 5.286 min  
 Delta R.T.: 0.003 min  
 Response: 1073799899  
 Conc: 52.97 ng/ml



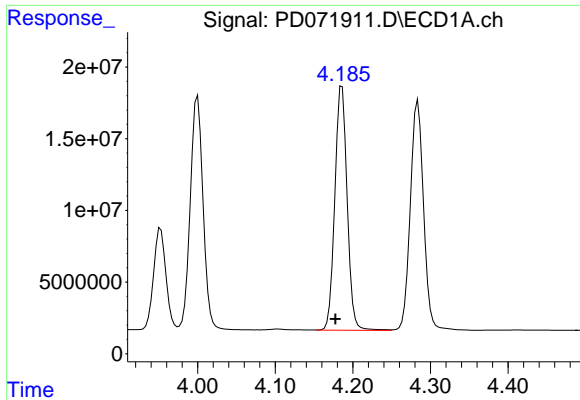
#6 beta-BHC

R.T.: 3.952 min  
 Delta R.T.: 0.009 min  
 Response: 78131594  
 Conc: 51.57 ng/ml



#6 beta-BHC

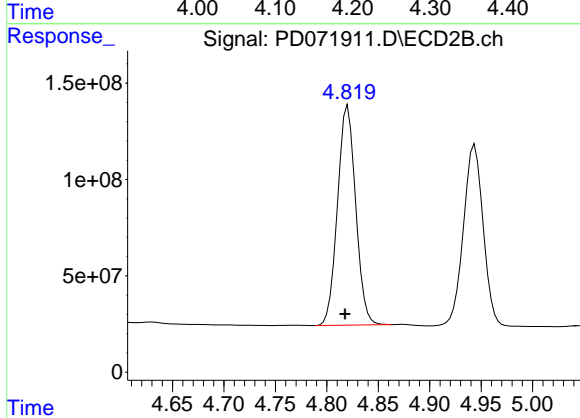
R.T.: 4.573 min  
 Delta R.T.: 0.003 min  
 Response: 701512603  
 Conc: 53.08 ng/ml



#7 delta-BHC

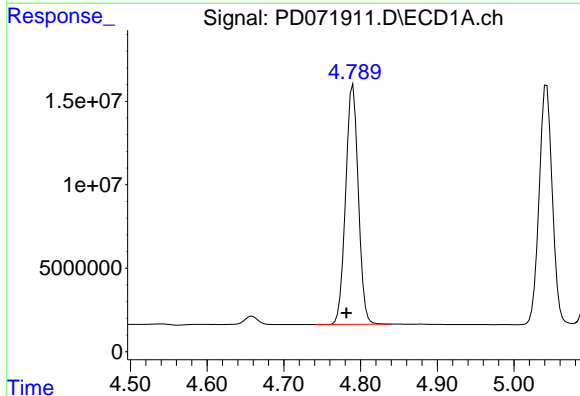
R.T.: 4.186 min  
 Delta R.T.: 0.009 min  
 Response: 187900441  
 Conc: 53.32 ng/ml

Instrument :  
 ECD\_D  
 ClientSampleId :  
 PSTDCCC050



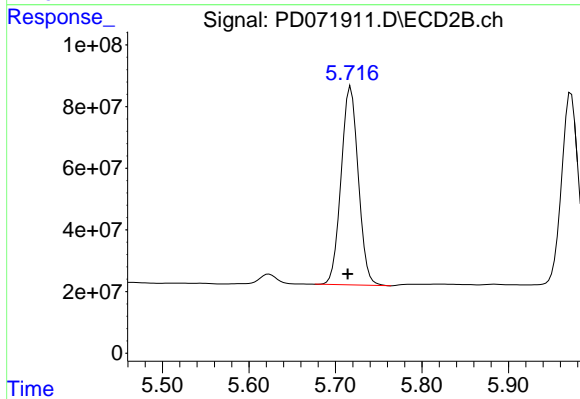
#7 delta-BHC

R.T.: 4.821 min  
 Delta R.T.: 0.003 min  
 Response: 1401220569  
 Conc: 59.95 ng/ml



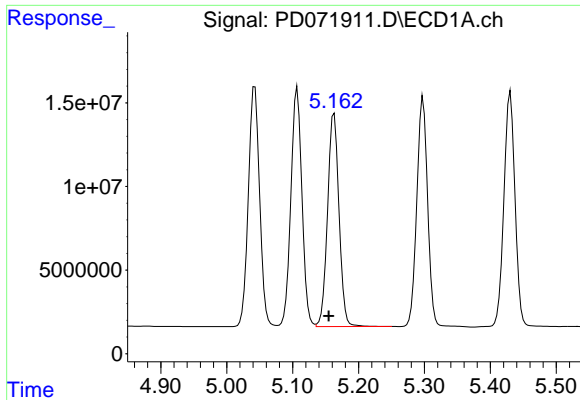
#8 Heptachlor epoxide

R.T.: 4.790 min  
 Delta R.T.: 0.009 min  
 Response: 165758565  
 Conc: 50.69 ng/ml



#8 Heptachlor epoxide

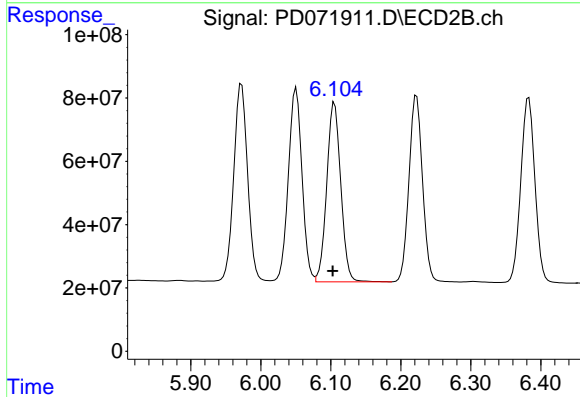
R.T.: 5.718 min  
 Delta R.T.: 0.004 min  
 Response: 883195888  
 Conc: 57.28 ng/ml



#9 Endosulfan I

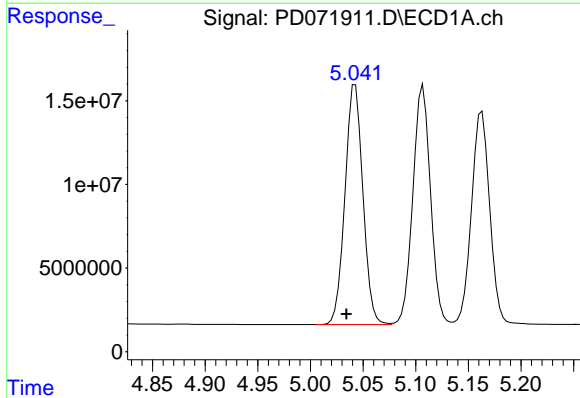
R.T.: 5.163 min  
 Delta R.T.: 0.008 min  
 Response: 153921601  
 Conc: 48.43 ng/ml

Instrument :  
 ECD\_D  
 ClientSampleId :  
 PSTDCCC050



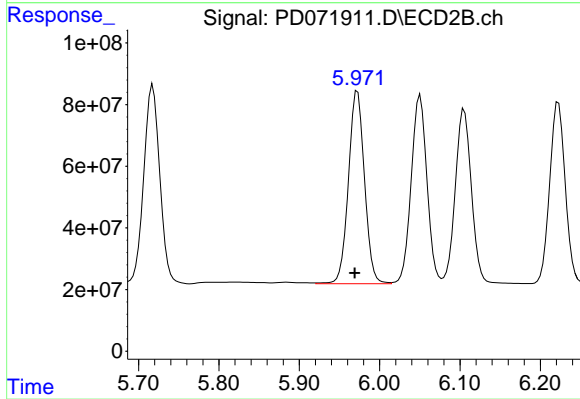
#9 Endosulfan I

R.T.: 6.105 min  
 Delta R.T.: 0.003 min  
 Response: 791084708  
 Conc: 53.66 ng/ml



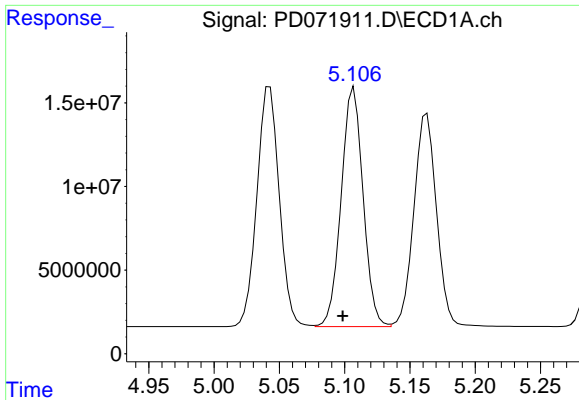
#10 gamma-Chlordane

R.T.: 5.043 min  
 Delta R.T.: 0.009 min  
 Response: 170804591  
 Conc: 50.67 ng/ml



#10 gamma-Chlordane

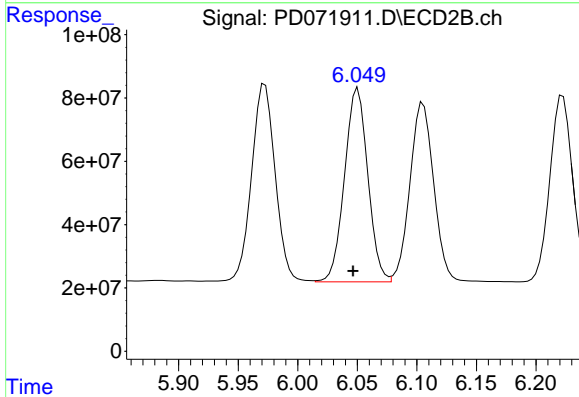
R.T.: 5.972 min  
 Delta R.T.: 0.003 min  
 Response: 868153179  
 Conc: 54.03 ng/ml



#11 alpha-Chlordane

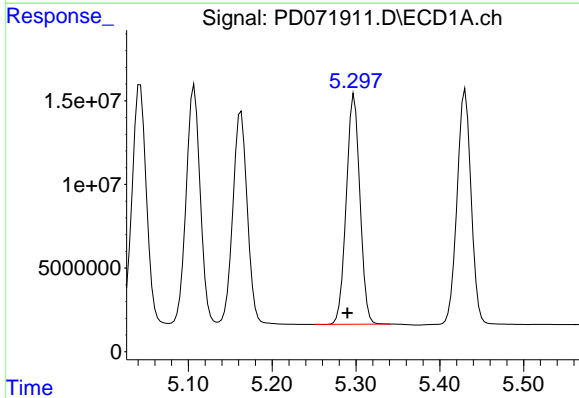
R.T.: 5.107 min  
 Delta R.T.: 0.009 min  
 Response: 166729376  
 Conc: 50.24 ng/ml

Instrument :  
 ECD\_D  
 ClientSampleId :  
 PSTDCCC050



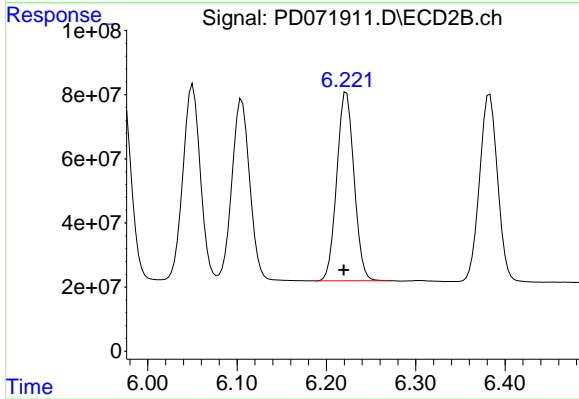
#11 alpha-Chlordane

R.T.: 6.051 min  
 Delta R.T.: 0.004 min  
 Response: 833520256  
 Conc: 53.42 ng/ml



#12 4,4'-DDE

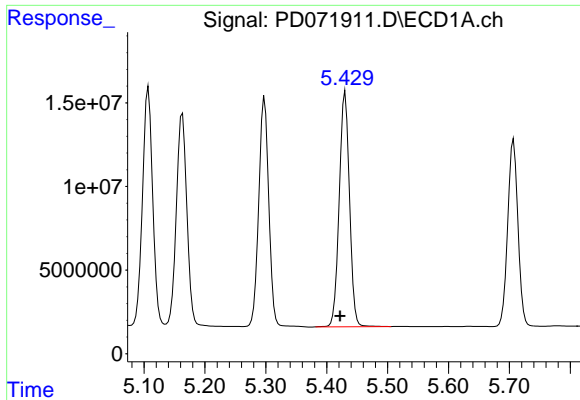
R.T.: 5.298 min  
 Delta R.T.: 0.008 min  
 Response: 155885737  
 Conc: 50.95 ng/ml



#12 4,4'-DDE

R.T.: 6.223 min  
 Delta R.T.: 0.003 min  
 Response: 790285723  
 Conc: 53.65 ng/ml

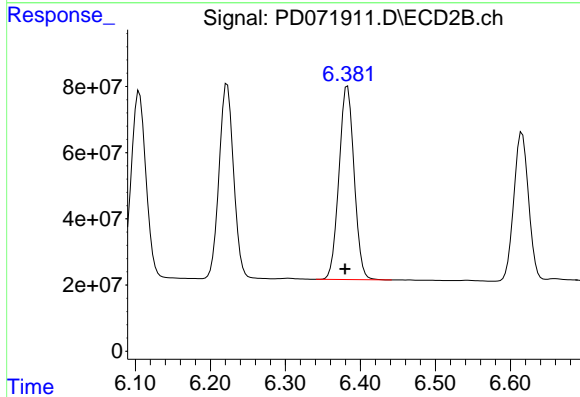




#13 Dieldrin

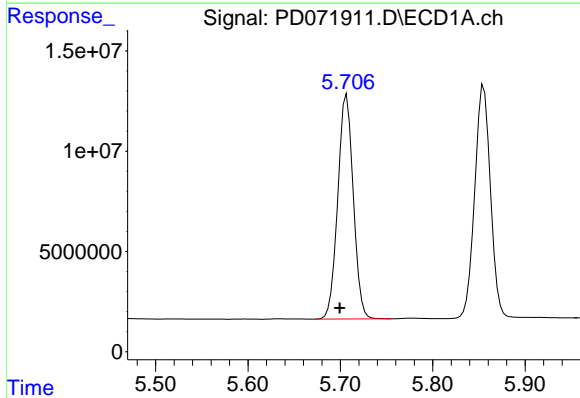
R.T.: 5.430 min  
 Delta R.T.: 0.009 min  
 Response: 164541027  
 Conc: 49.20 ng/ml

Instrument :  
 ECD\_D  
 ClientSampleId :  
 PSTDCCC050



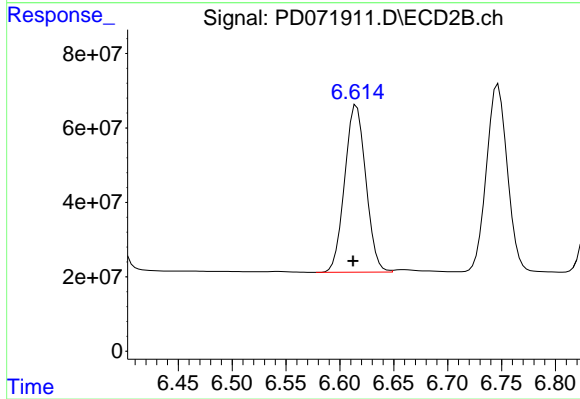
#13 Dieldrin

R.T.: 6.383 min  
 Delta R.T.: 0.003 min  
 Response: 820735838  
 Conc: 54.15 ng/ml



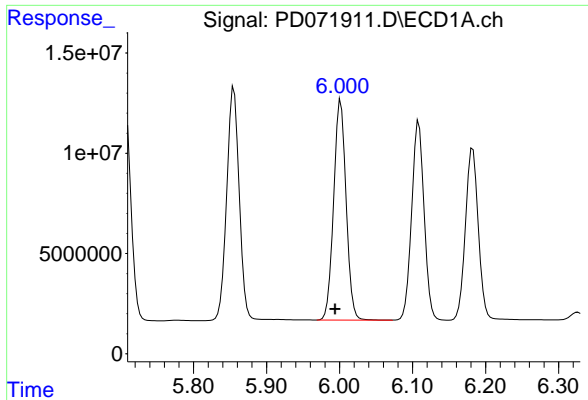
#14 Endrin

R.T.: 5.707 min  
 Delta R.T.: 0.007 min  
 Response: 130392220  
 Conc: 44.01 ng/ml



#14 Endrin

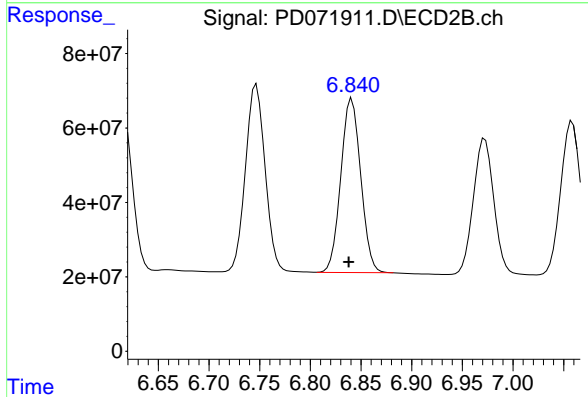
R.T.: 6.615 min  
 Delta R.T.: 0.003 min  
 Response: 615020467  
 Conc: 48.69 ng/ml



#15 Endosulfan II

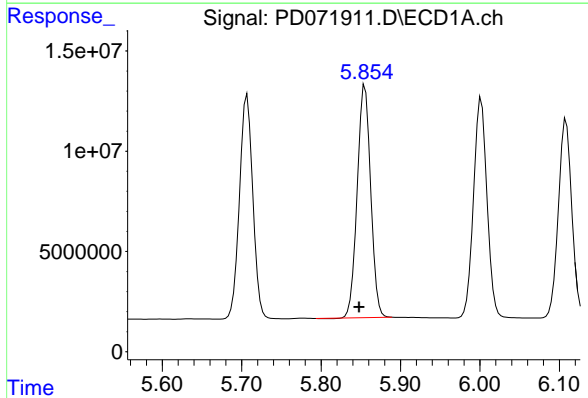
R.T.: 6.002 min  
 Delta R.T.: 0.008 min  
 Response: 130249704  
 Conc: 47.28 ng/ml

Instrument :  
 ECD\_D  
 ClientSampleId :  
 PSTDCCC050



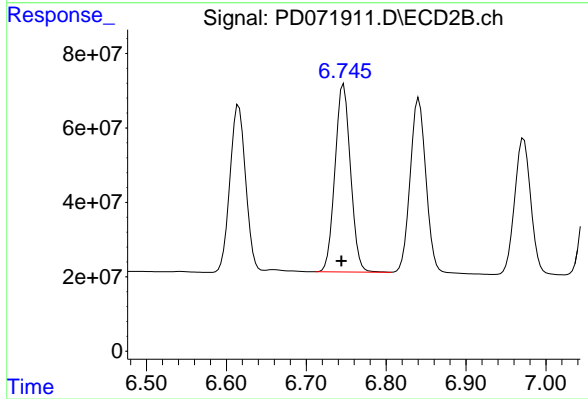
#15 Endosulfan II

R.T.: 6.841 min  
 Delta R.T.: 0.003 min  
 Response: 639125514  
 Conc: 51.61 ng/ml



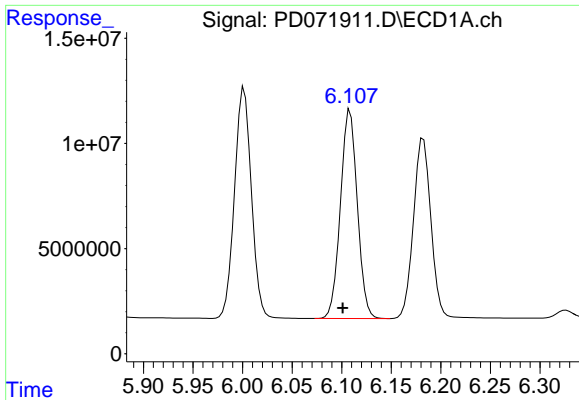
#16 4,4'-DDD

R.T.: 5.855 min  
 Delta R.T.: 0.008 min  
 Response: 136462012  
 Conc: 53.82 ng/ml



#16 4,4'-DDD

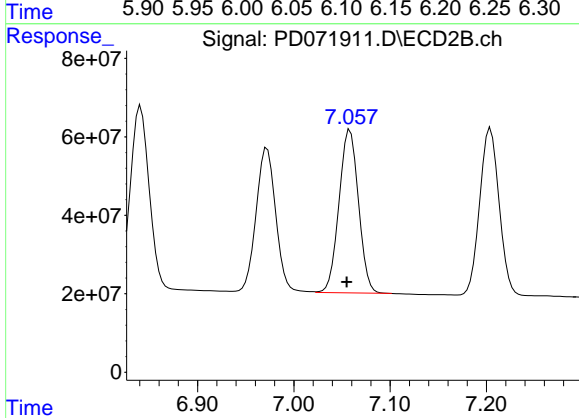
R.T.: 6.747 min  
 Delta R.T.: 0.003 min  
 Response: 680858267  
 Conc: 57.28 ng/ml



#17 4,4'-DDT

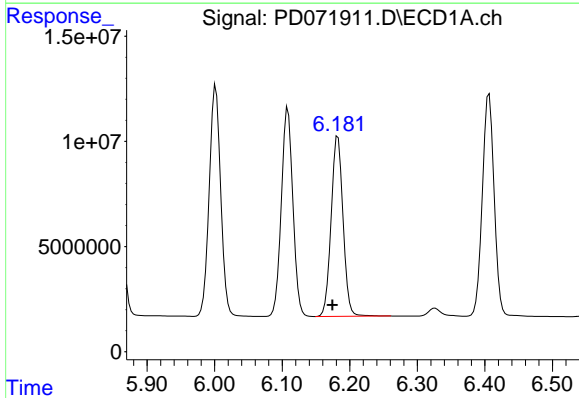
R.T.: 6.109 min  
 Delta R.T.: 0.007 min  
 Response: 117692485  
 Conc: 44.72 ng/ml

Instrument :  
 ECD\_D  
 ClientSampleId :  
 PSTDCCC050



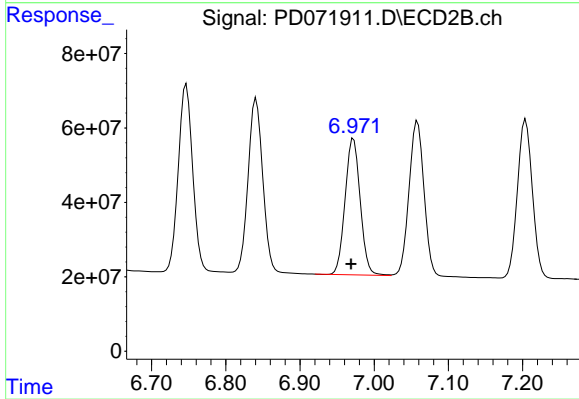
#17 4,4'-DDT

R.T.: 7.058 min  
 Delta R.T.: 0.004 min  
 Response: 582571386  
 Conc: 47.16 ng/ml



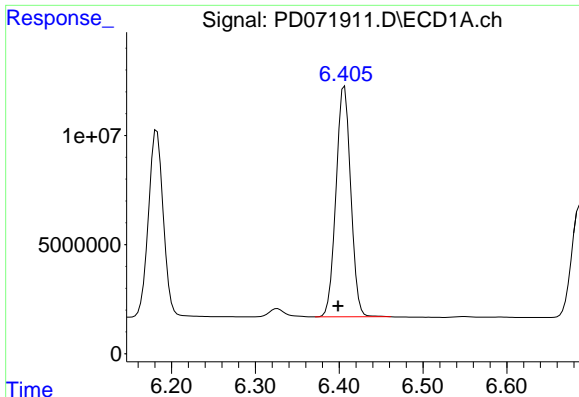
#18 Endrin aldehyde

R.T.: 6.182 min  
 Delta R.T.: 0.008 min  
 Response: 105389769  
 Conc: 47.66 ng/ml



#18 Endrin aldehyde

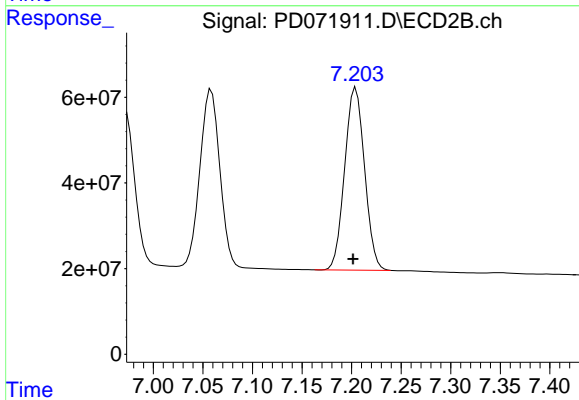
R.T.: 6.972 min  
 Delta R.T.: 0.003 min  
 Response: 518868864  
 Conc: 53.74 ng/ml



#19 Endosulfan Sulfate

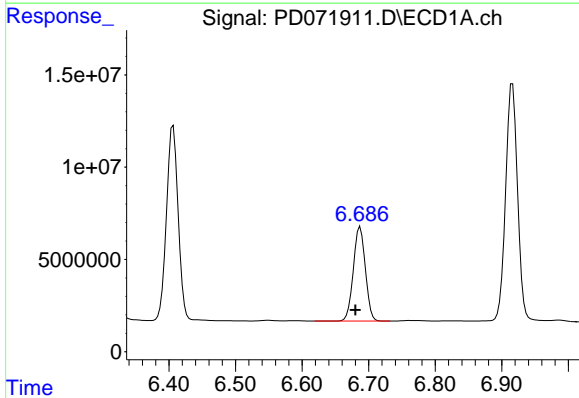
R.T.: 6.406 min  
 Delta R.T.: 0.008 min  
 Response: 129017098  
 Conc: 48.11 ng/ml

Instrument :  
 ECD\_D  
 ClientSampleId :  
 PSTDCCC050



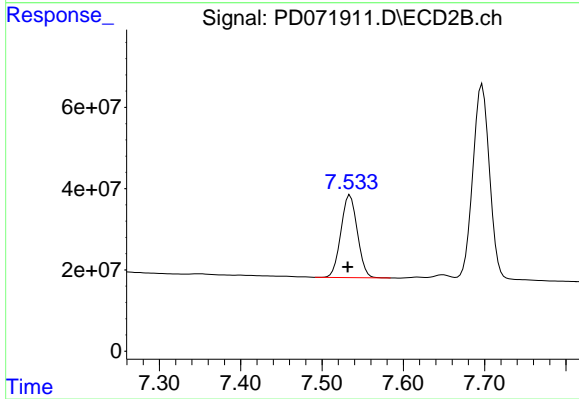
#19 Endosulfan Sulfate

R.T.: 7.204 min  
 Delta R.T.: 0.003 min  
 Response: 595790294  
 Conc: 53.42 ng/ml



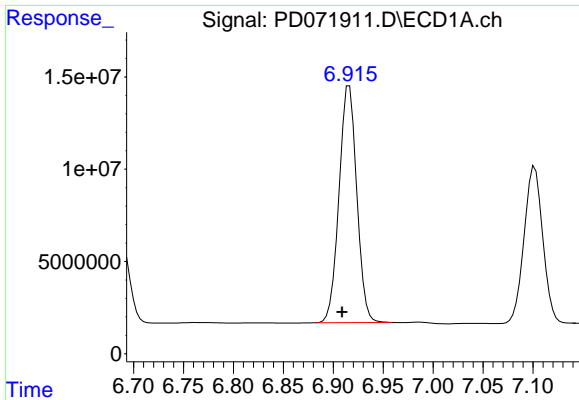
#20 Methoxychlor

R.T.: 6.687 min  
 Delta R.T.: 0.007 min  
 Response: 64081099  
 Conc: 42.80 ng/ml



#20 Methoxychlor

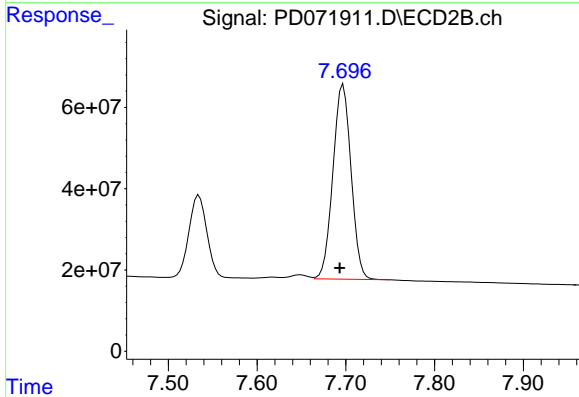
R.T.: 7.535 min  
 Delta R.T.: 0.003 min  
 Response: 284465716  
 Conc: 46.79 ng/ml



#21 Endrin ketone

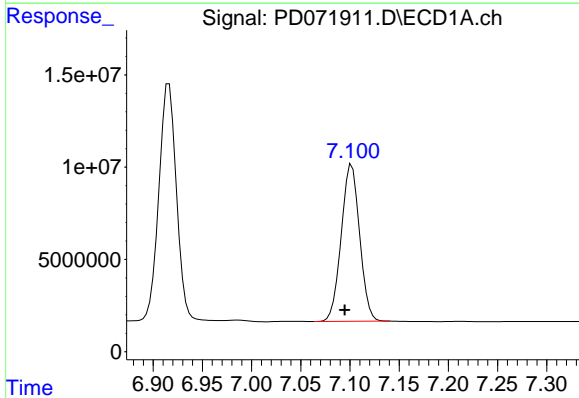
R.T.: 6.915 min  
 Delta R.T.: 0.006 min  
 Response: 158828049  
 Conc: 52.93 ng/ml

Instrument :  
 ECD\_D  
 ClientSampleId :  
 PSTDCCC050



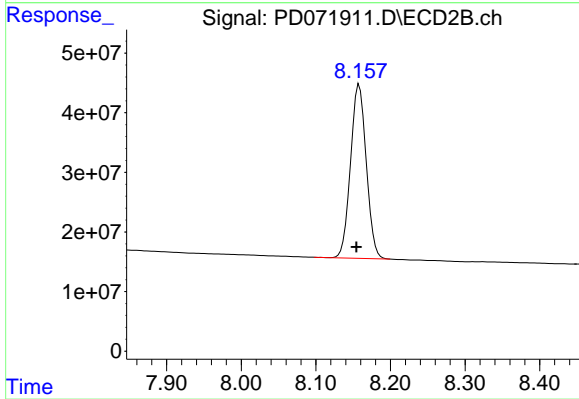
#21 Endrin ketone

R.T.: 7.697 min  
 Delta R.T.: 0.004 min  
 Response: 680842495  
 Conc: 54.74 ng/ml



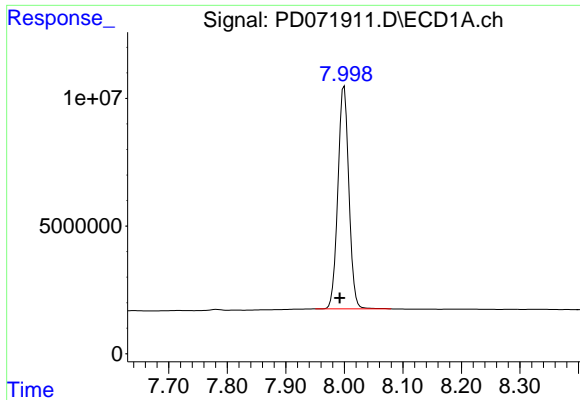
#22 Mirex

R.T.: 7.102 min  
 Delta R.T.: 0.007 min  
 Response: 110522068  
 Conc: 46.90 ng/ml



#22 Mirex

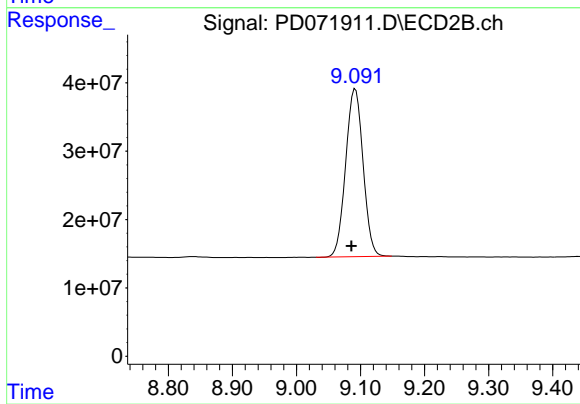
R.T.: 8.158 min  
 Delta R.T.: 0.004 min  
 Response: 426905871  
 Conc: 49.29 ng/ml



#28 Decachlorobiphenyl

R.T.: 8.000 min  
Delta R.T.: 0.007 min  
Response: 113858662  
Conc: 45.20 ng/ml

Instrument :  
ECD\_D  
ClientSampleId :  
PSTDCCC050



#28 Decachlorobiphenyl

R.T.: 9.092 min  
Delta R.T.: 0.006 min  
Response: 462867668  
Conc: 49.79 ng/ml