

Data Path : Z:\pestpcbsrv\HPCHEM1\ECD\_D\Data\PD091722\  
 Data File : PD071914.D  
 Signal(s) : Signal #1: ECD1A.ch Signal #2: ECD2B.ch  
 Acq On : 15 Sep 2022 17:17  
 Operator : AR\AJ  
 Sample : PB147669BSD  
 Misc :  
 ALS Vial : 7 Sample Multiplier: 1

Instrument :  
 ECD\_D  
 ClientSampleId :  
 PB147669BSD

Integration File signal 1: autoint1.e  
 Integration File signal 2: autoint2.e  
 Quant Time: Sep 16 01:10:09 2022  
 Quant Method : Z:\pestpcbsrv\HPCHEM1\ECD\_D\Method\PD091022.M  
 Quant Title : GC Extractables  
 QLast Update : Sat Sep 10 22:11:50 2022  
 Response via : Initial Calibration  
 Integrator: ChemStation

Volume Inj. : 2 µl  
 Signal #1 Phase : ZB-MR2 Signal #2 Phase: ZB-MR1  
 Signal #1 Info : 30M x 0.32mm x0.2 Signal #2 Info : 30M x 0.32mm x 0.50µm

Compound	RT#1	RT#2	Resp#1	Resp#2	ng/ml	ng/ml
-----						
System Monitoring Compounds						
1) SA Tetrachlo...	2.813	3.565	51351524	630.2E6	21.000	21.962
28) SA Decachlor...	8.002	9.092	49252368	207.7E6	19.550	22.344
Target Compounds						
2) A alpha-BHC	3.321	4.031	43163260	522.8E6	11.200m	13.028
3) MA gamma-BHC...	3.656	4.366	41838471	446.7E6	11.916	13.605
4) MA Heptachlor	4.000	4.944	41598045	368.2E6	11.126m	15.239 #
5) MB Aldrin	4.284	5.286	40173752	278.1E6	10.971m	13.720 #
6) B beta-BHC	3.953	4.574	18305698	183.6E6	12.082m	13.890
7) B delta-BHC	4.186	4.821	39652576	332.0E6	11.252m	14.203 #
8) B Heptachlo...	4.792	5.717	36717770	337.2E6	11.229	21.866m#
9) A Endosulfan I	5.162	6.105	23854771	229.2E6	7.506m	15.544m#
10) B gamma-Chl...	5.043	5.972	37838494	217.9E6	11.225m	13.560m
11) B alpha-Chl...	5.108	6.049	38764858	224.4E6	11.681m	14.379m
12) B 4,4'-DDE	5.300	6.222	33931592	176.7E6	11.090	11.998m
13) MA Dieldrin	5.431	6.382	36476080	216.0E6	10.906m	14.251m#
14) MA Endrin	5.710	6.606	47507678	41975774	16.035	3.323m#
15) B Endosulfa...	6.003	6.843	30499109	165.7E6	11.072m	13.384
16) A 4,4'-DDD	5.857	6.748	29251974	164.2E6	11.537	13.812
17) MA 4,4'-DDT	6.110	7.058	26761320	182.5E6	10.168m	14.773m#
18) B Endrin al...	6.185	6.972	23646472	125.1E6	10.692	12.956m
19) B Endosulfa...	6.409	7.207	32489948	138.5E6	12.115	12.416
20) A Methoxychlor	6.690	7.532	17547310	157.5E6	11.719	25.915m#
21) B Endrin ke...	6.917	7.696	47822775	168.0E6	15.938m	13.504m
22) Mirex	7.103	8.160	30574377	112.2E6	12.973m	12.955
-----						

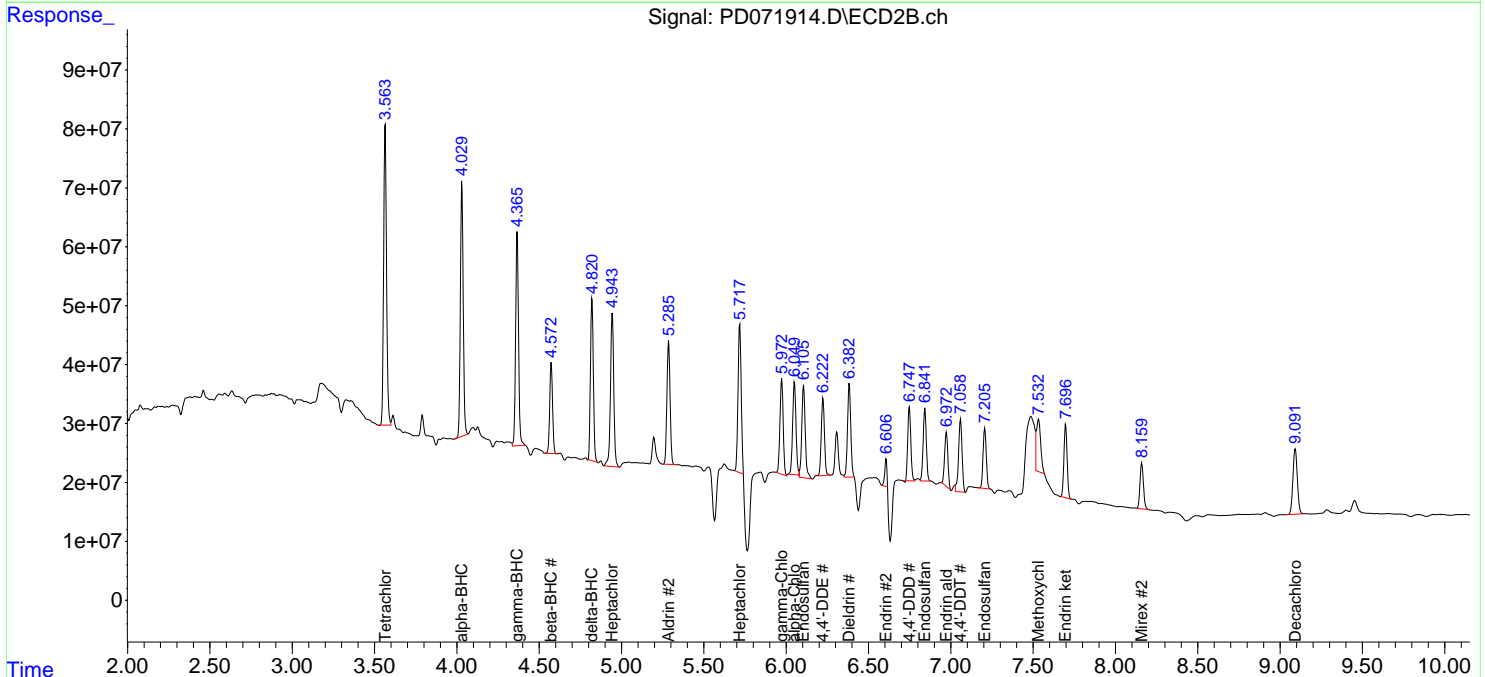
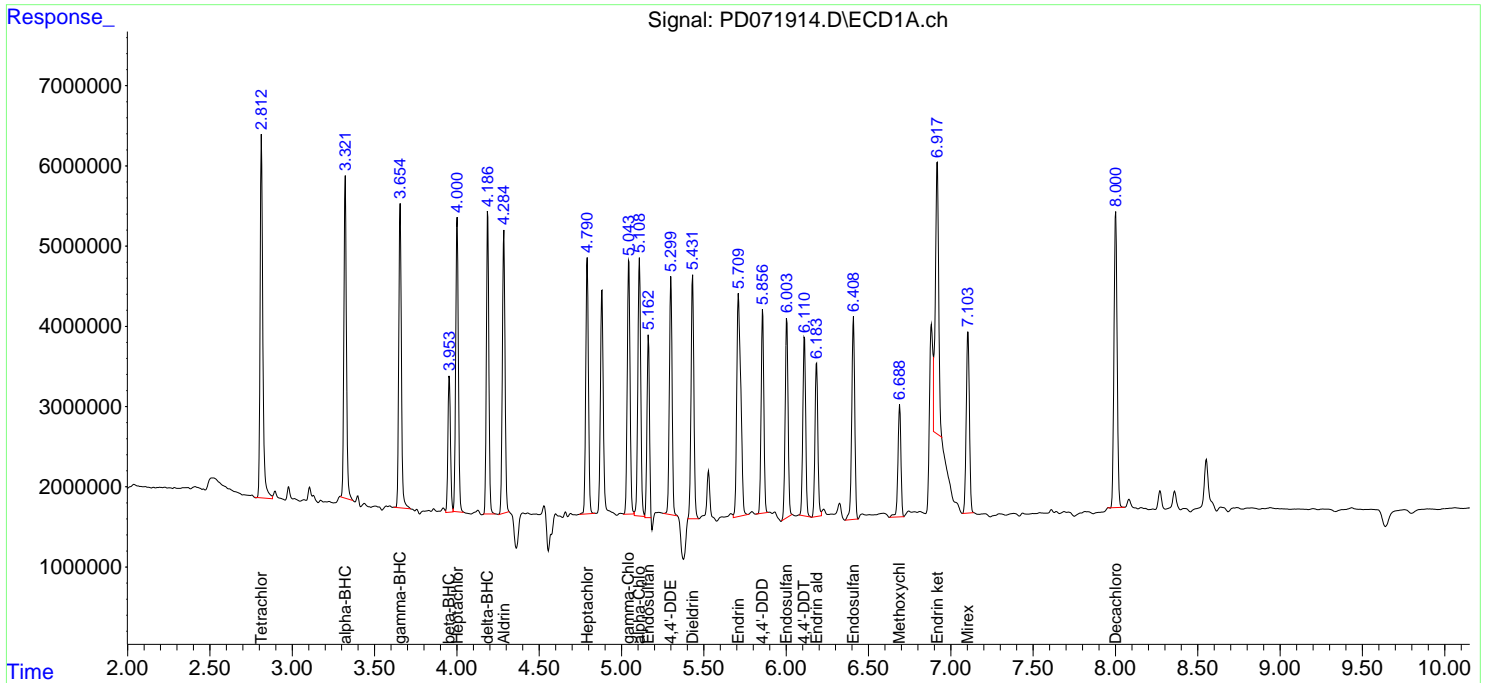
(f)=RT Delta > 1/2 Window (#)=Amounts differ by > 25% (m)=manual int.

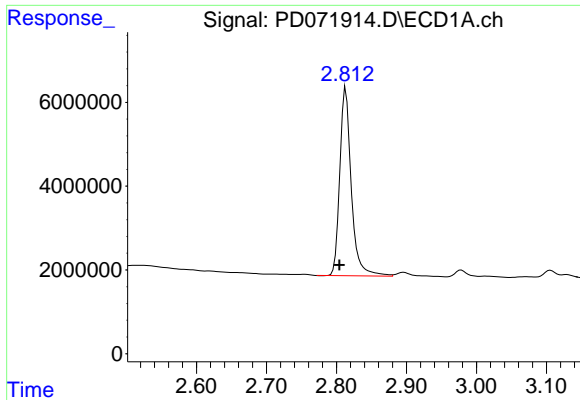
Data Path : Z:\pestpcbsrv\HPCHEM1\ECD\_D\Data\PD091722\  
 Data File : PD071914.D  
 Signal(s) : Signal #1: ECD1A.ch Signal #2: ECD2B.ch  
 Acq On : 15 Sep 2022 17:17  
 Operator : AR\AJ  
 Sample : PB147669BSD  
 Misc :  
 ALS Vial : 7 Sample Multiplier: 1

Instrument :  
 ECD\_D  
 ClientSampleId :  
 PB147669BSD

Integration File signal 1: autoint1.e  
 Integration File signal 2: autoint2.e  
 Quant Time: Sep 16 01:10:09 2022  
 Quant Method : Z:\pestpcbsrv\HPCHEM1\ECD\_D\Method\PD091022.M  
 Quant Title : GC Extractables  
 QLast Update : Sat Sep 10 22:11:50 2022  
 Response via : Initial Calibration  
 Integrator: ChemStation

Volume Inj. : 2 µl  
 Signal #1 Phase : ZB-MR2 Signal #2 Phase: ZB-MR1  
 Signal #1 Info : 30M x 0.32mm x0.2 Signal #2 Info : 30M x 0.32mm x 0.50µm

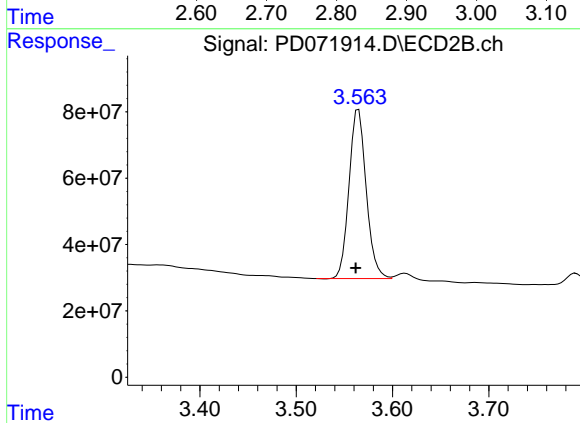




#1 Tetrachloro-m-xylene

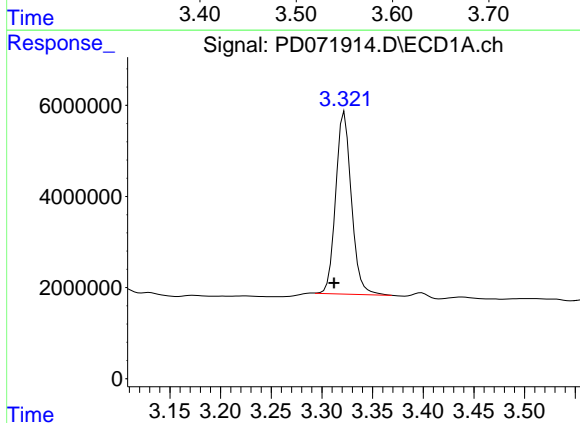
R.T.: 2.813 min  
 Delta R.T.: 0.009 min  
 Response: 51351524  
 Conc: 21.00 ng/ml

Instrument :  
 ECD\_D  
 ClientSampleId :  
 PB147669BSD



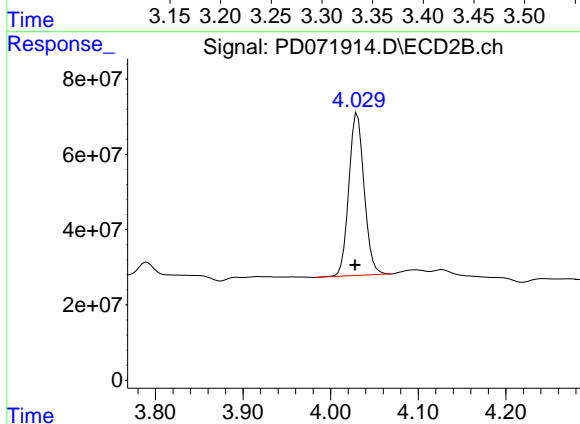
#1 Tetrachloro-m-xylene

R.T.: 3.565 min  
 Delta R.T.: 0.003 min  
 Response: 630217446  
 Conc: 21.96 ng/ml



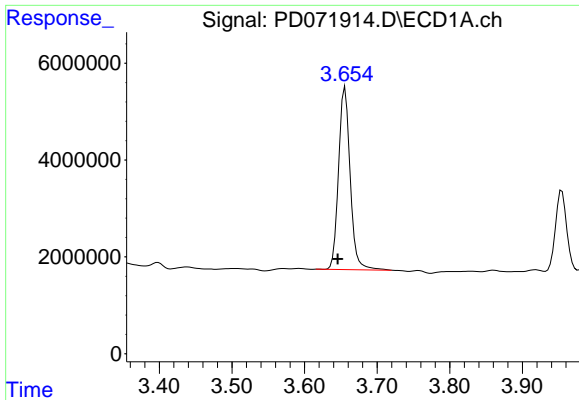
#2 alpha-BHC

R.T.: 3.321 min  
 Delta R.T.: 0.009 min  
 Response: 43163260  
 Conc: 11.20 ng/ml m



#2 alpha-BHC

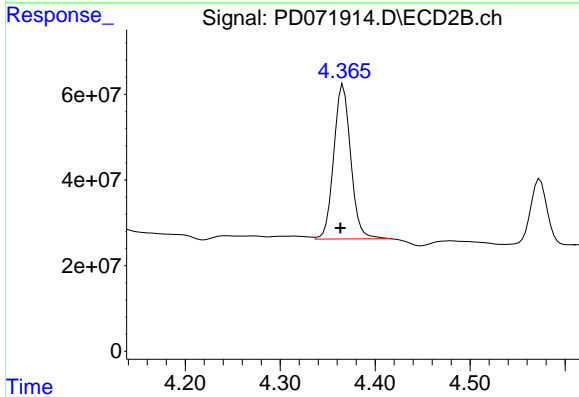
R.T.: 4.031 min  
 Delta R.T.: 0.003 min  
 Response: 522812232  
 Conc: 13.03 ng/ml



#3 gamma-BHC (Lindane)

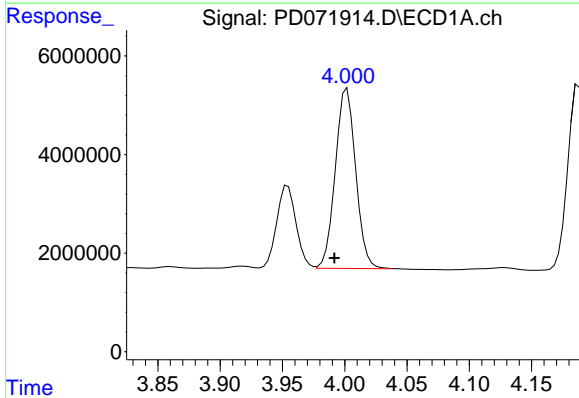
R.T.: 3.656 min  
Delta R.T.: 0.010 min  
Response: 41838471  
Conc: 11.92 ng/ml

Instrument :  
ECD\_D  
ClientSampleId :  
PB147669BSD



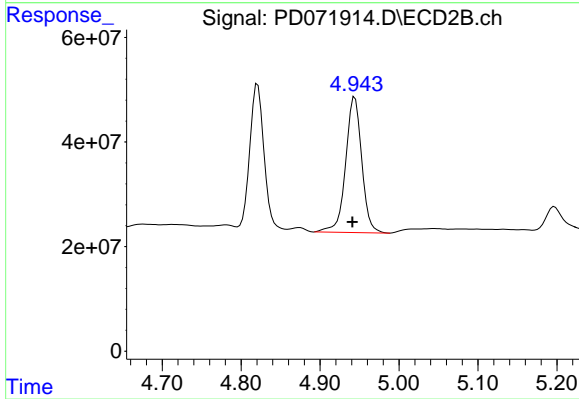
#3 gamma-BHC (Lindane)

R.T.: 4.366 min  
Delta R.T.: 0.003 min  
Response: 446687469  
Conc: 13.61 ng/ml



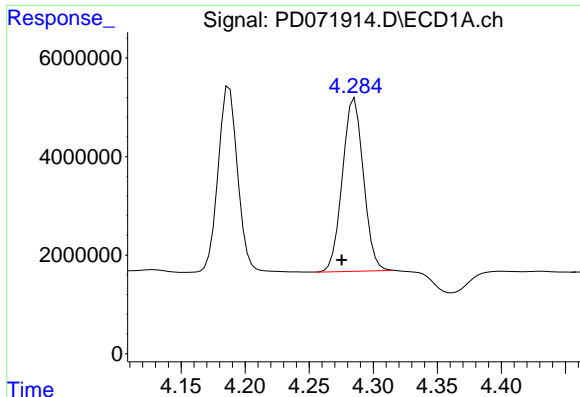
#4 Heptachlor

R.T.: 4.000 min  
Delta R.T.: 0.009 min  
Response: 41598045  
Conc: 11.13 ng/ml m



#4 Heptachlor

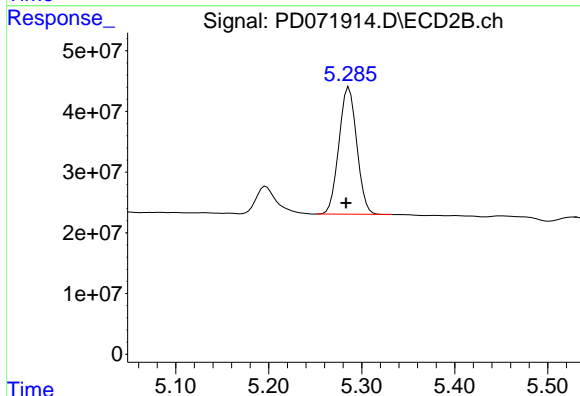
R.T.: 4.944 min  
Delta R.T.: 0.003 min  
Response: 368216890  
Conc: 15.24 ng/ml



#5 Aldrin

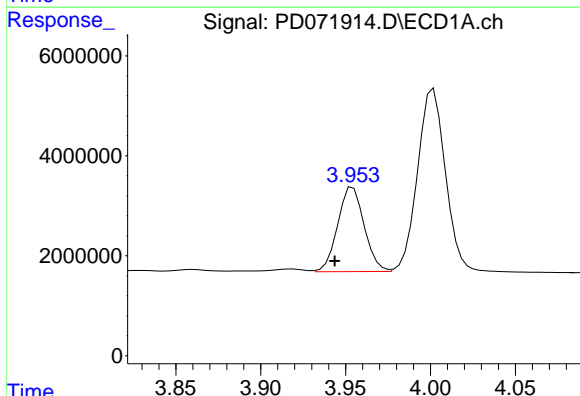
R.T.: 4.284 min  
 Delta R.T.: 0.009 min  
 Response: 40173752  
 Conc: 10.97 ng/ml

Instrument :  
 ECD\_D  
 ClientSampleId :  
 PB147669BSD



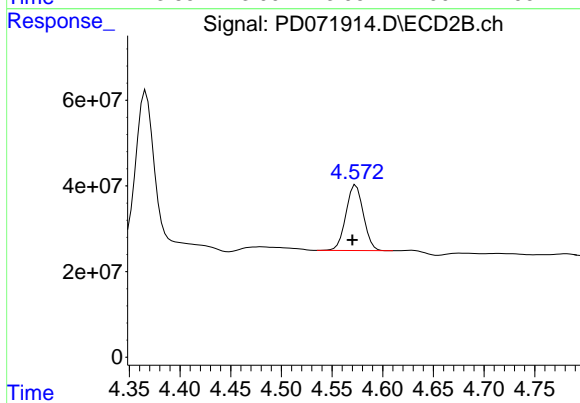
#5 Aldrin

R.T.: 5.286 min  
 Delta R.T.: 0.003 min  
 Response: 278123442  
 Conc: 13.72 ng/ml



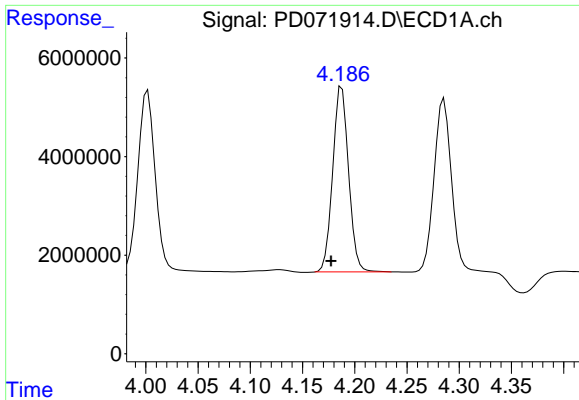
#6 beta-BHC

R.T.: 3.953 min  
 Delta R.T.: 0.009 min  
 Response: 18305698  
 Conc: 12.08 ng/ml m



#6 beta-BHC

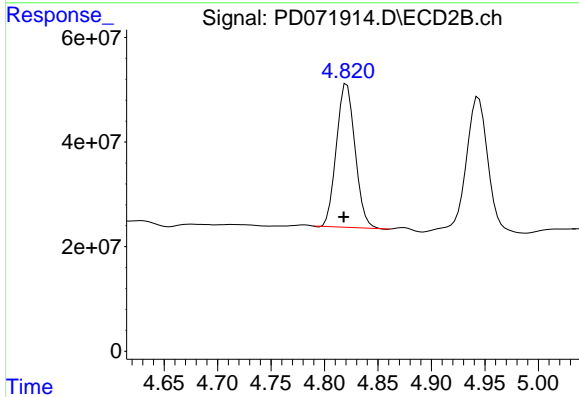
R.T.: 4.574 min  
 Delta R.T.: 0.004 min  
 Response: 183586618  
 Conc: 13.89 ng/ml



#7 delta-BHC

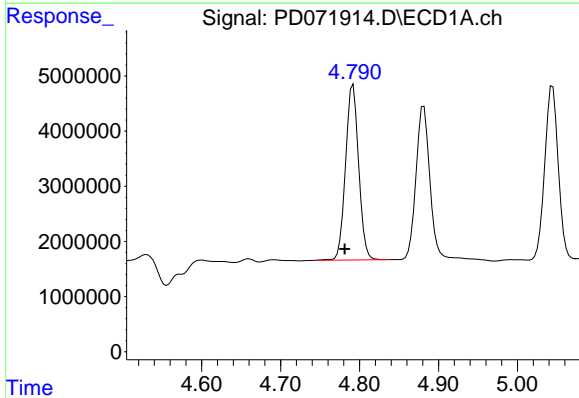
R.T.: 4.186 min  
 Delta R.T.: 0.009 min  
 Response: 39652576  
 Conc: 11.25 ng/ml

Instrument :  
 ECD\_D  
 ClientSampleId :  
 PB147669BSD



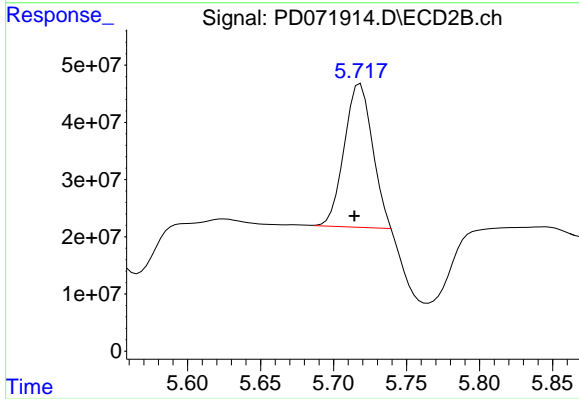
#7 delta-BHC

R.T.: 4.821 min  
 Delta R.T.: 0.003 min  
 Response: 331981658  
 Conc: 14.20 ng/ml



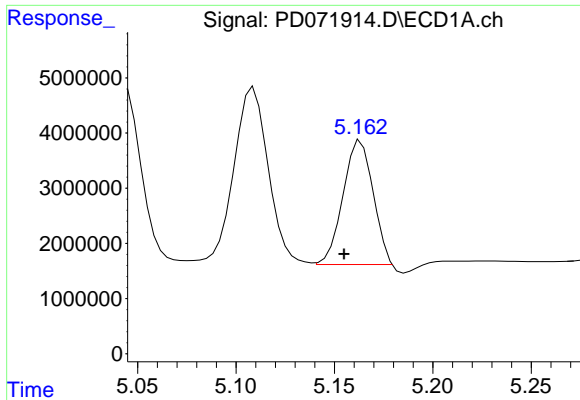
#8 Heptachlor epoxide

R.T.: 4.792 min  
 Delta R.T.: 0.010 min  
 Response: 36717770  
 Conc: 11.23 ng/ml



#8 Heptachlor epoxide

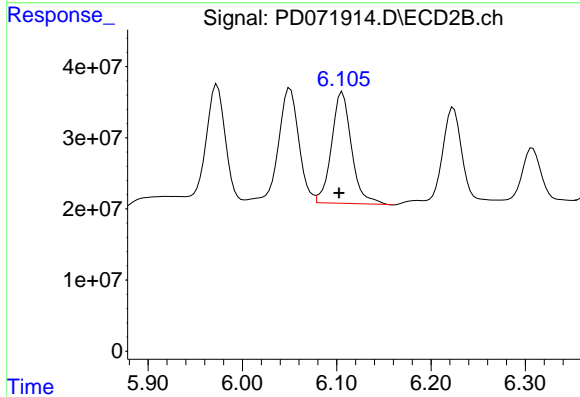
R.T.: 5.717 min  
 Delta R.T.: 0.003 min  
 Response: 337166299  
 Conc: 21.87 ng/ml m



#9 Endosulfan I

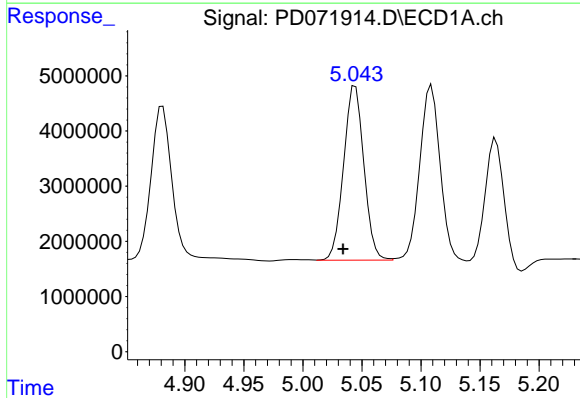
R.T.: 5.162 min  
 Delta R.T.: 0.007 min  
 Response: 23854771  
 Conc: 7.51 ng/ml

Instrument :  
 ECD\_D  
 ClientSampleId :  
 PB147669BSD



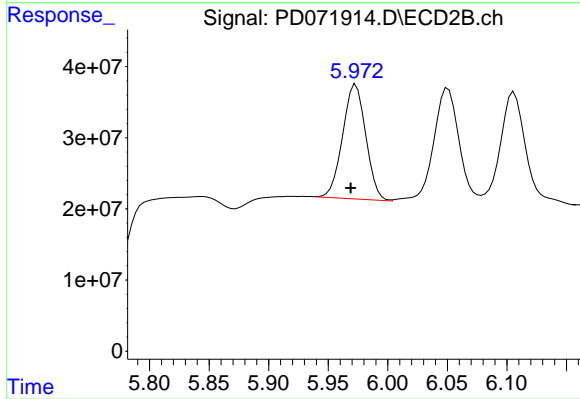
#9 Endosulfan I

R.T.: 6.105 min  
 Delta R.T.: 0.002 min  
 Response: 229152578  
 Conc: 15.54 ng/ml m



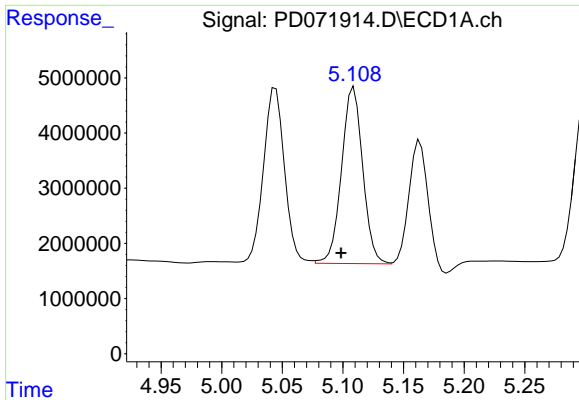
#10 gamma-Chlordane

R.T.: 5.043 min  
 Delta R.T.: 0.009 min  
 Response: 37838494  
 Conc: 11.22 ng/ml m



#10 gamma-Chlordane

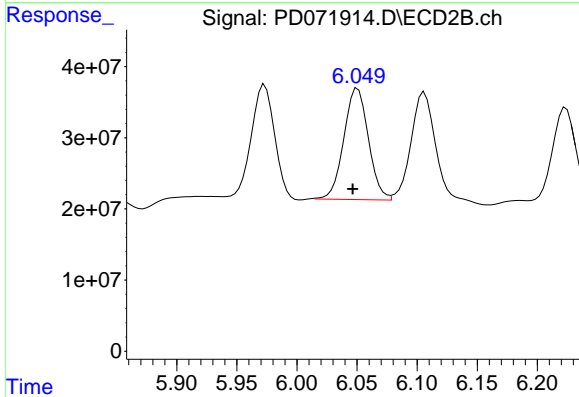
R.T.: 5.972 min  
 Delta R.T.: 0.003 min  
 Response: 217883187  
 Conc: 13.56 ng/ml m



#11 alpha-Chlordane

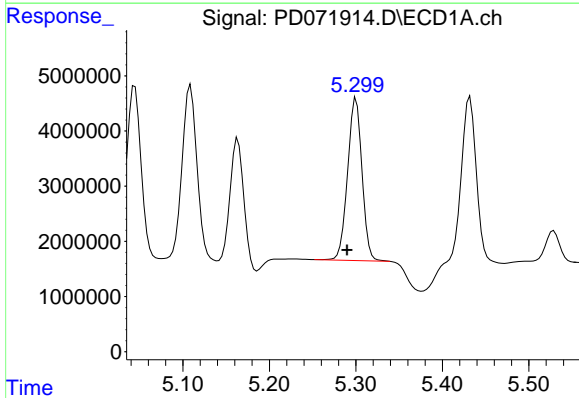
R.T.: 5.108 min  
 Delta R.T.: 0.009 min  
 Response: 38764858  
 Conc: 11.68 ng/ml

Instrument :  
 ECD\_D  
 ClientSampleId :  
 PB147669BSD



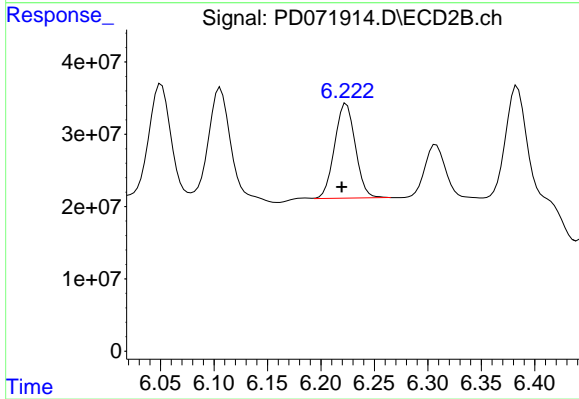
#11 alpha-Chlordane

R.T.: 6.049 min  
 Delta R.T.: 0.003 min  
 Response: 224355179  
 Conc: 14.38 ng/ml m



#12 4,4'-DDE

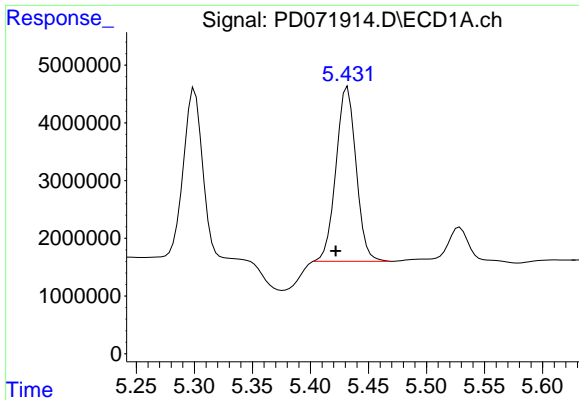
R.T.: 5.300 min  
 Delta R.T.: 0.011 min  
 Response: 33931592  
 Conc: 11.09 ng/ml



#12 4,4'-DDE

R.T.: 6.222 min  
 Delta R.T.: 0.003 min  
 Response: 176747726  
 Conc: 12.00 ng/ml m

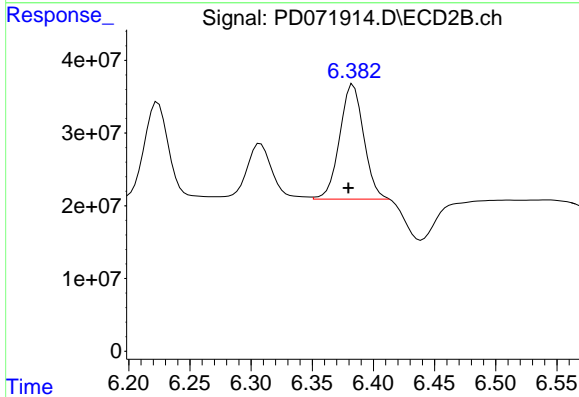




#13 Dieldrin

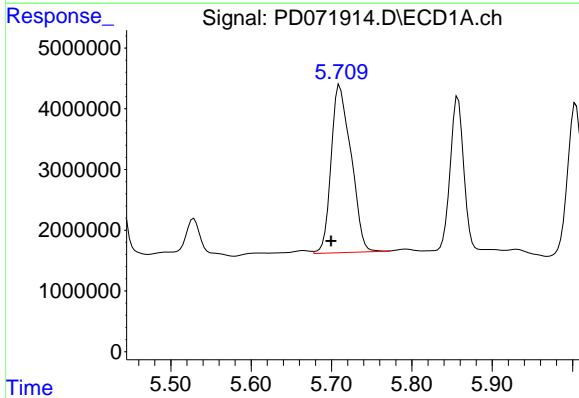
R.T.: 5.431 min  
 Delta R.T.: 0.009 min  
 Response: 36476080  
 Conc: 10.91 ng/ml

Instrument :  
 ECD\_D  
 ClientSampleId :  
 PB147669BSD



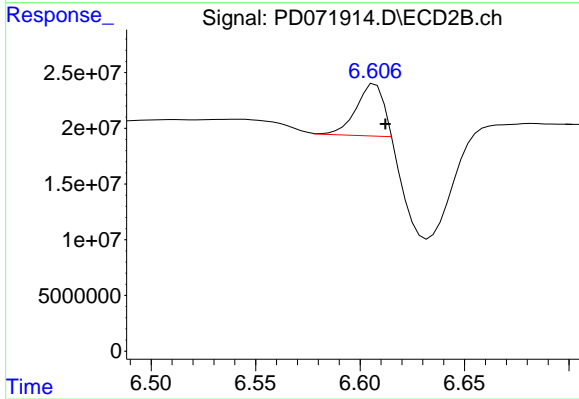
#13 Dieldrin

R.T.: 6.382 min  
 Delta R.T.: 0.003 min  
 Response: 216002332  
 Conc: 14.25 ng/ml m



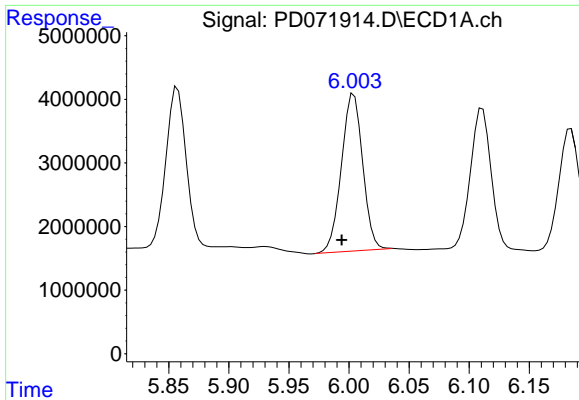
#14 Endrin

R.T.: 5.710 min  
 Delta R.T.: 0.011 min  
 Response: 47507678  
 Conc: 16.03 ng/ml



#14 Endrin

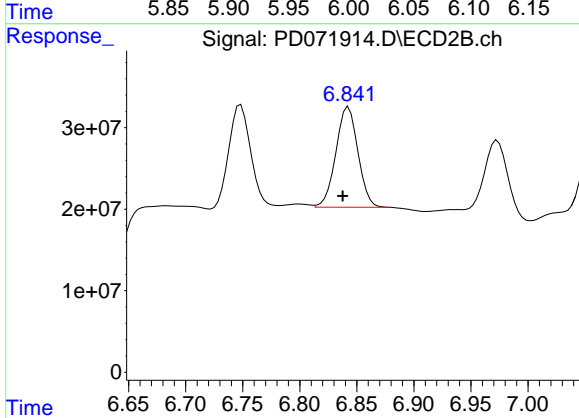
R.T.: 6.606 min  
 Delta R.T.: -0.006 min  
 Response: 41975774  
 Conc: 3.32 ng/ml m



#15 Endosulfan II

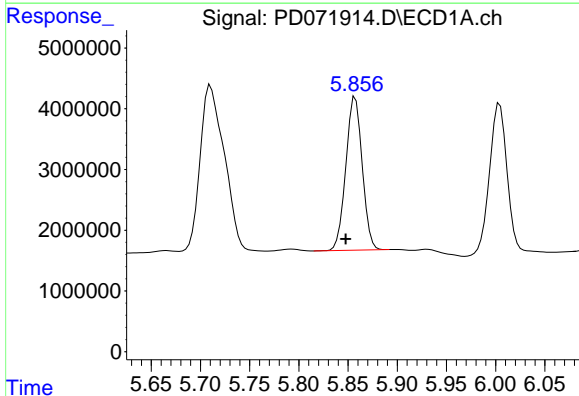
R.T.: 6.003 min  
 Delta R.T.: 0.009 min  
 Response: 30499109  
 Conc: 11.07 ng/ml

Instrument :  
 ECD\_D  
 ClientSampleId :  
 PB147669BSD



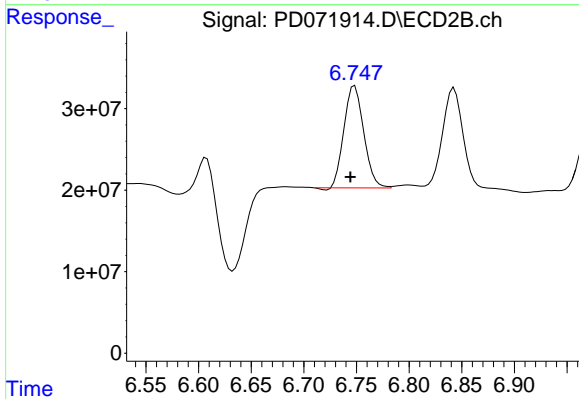
#15 Endosulfan II

R.T.: 6.843 min  
 Delta R.T.: 0.005 min  
 Response: 165728791  
 Conc: 13.38 ng/ml



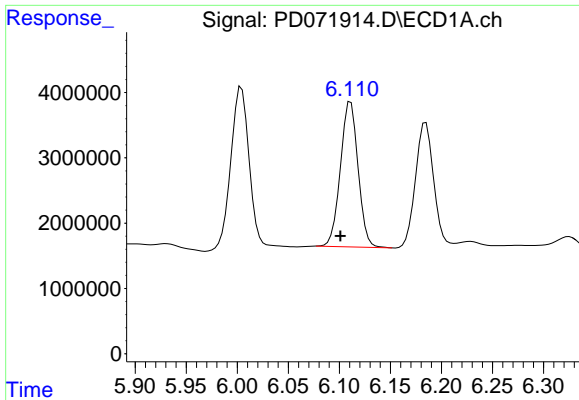
#16 4,4'-DDD

R.T.: 5.857 min  
 Delta R.T.: 0.010 min  
 Response: 29251974  
 Conc: 11.54 ng/ml



#16 4,4'-DDD

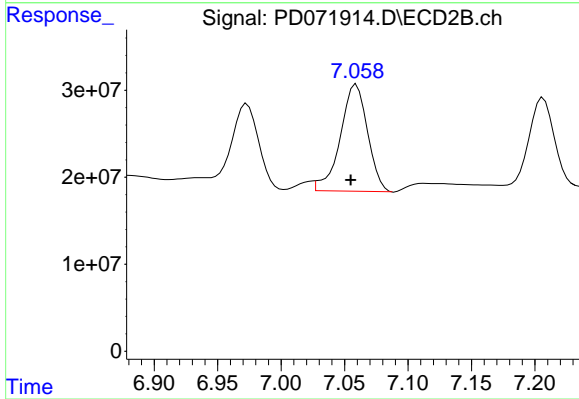
R.T.: 6.748 min  
 Delta R.T.: 0.004 min  
 Response: 164163156  
 Conc: 13.81 ng/ml



#17 4,4'-DDT

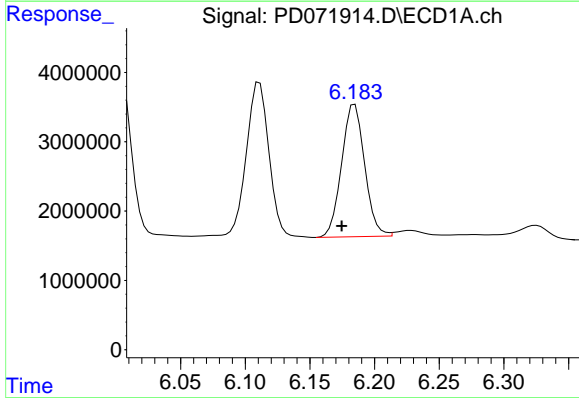
R.T.: 6.110 min  
 Delta R.T.: 0.009 min  
 Response: 26761320  
 Conc: 10.17 ng/ml

Instrument :  
 ECD\_D  
 ClientSampleId :  
 PB147669BSD



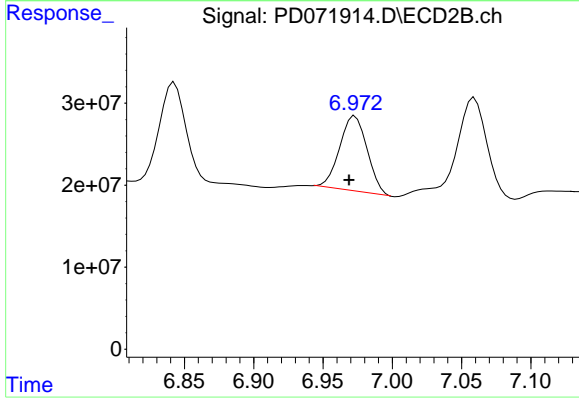
#17 4,4'-DDT

R.T.: 7.058 min  
 Delta R.T.: 0.003 min  
 Response: 182496390  
 Conc: 14.77 ng/ml m



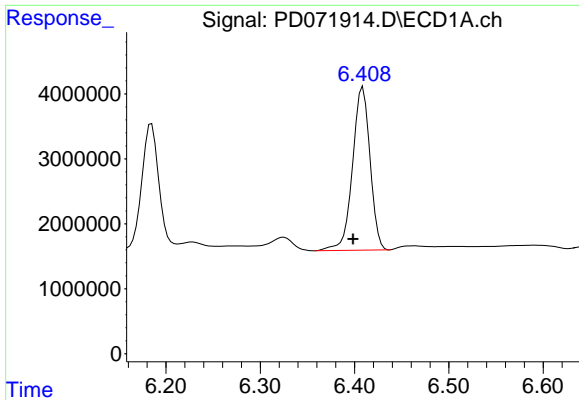
#18 Endrin aldehyde

R.T.: 6.185 min  
 Delta R.T.: 0.010 min  
 Response: 23646472  
 Conc: 10.69 ng/ml



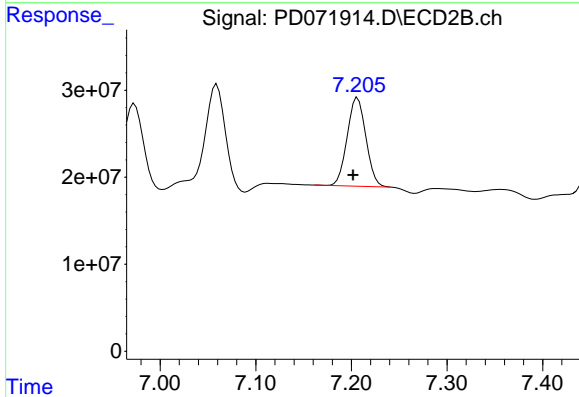
#18 Endrin aldehyde

R.T.: 6.972 min  
 Delta R.T.: 0.003 min  
 Response: 125089425  
 Conc: 12.96 ng/ml m

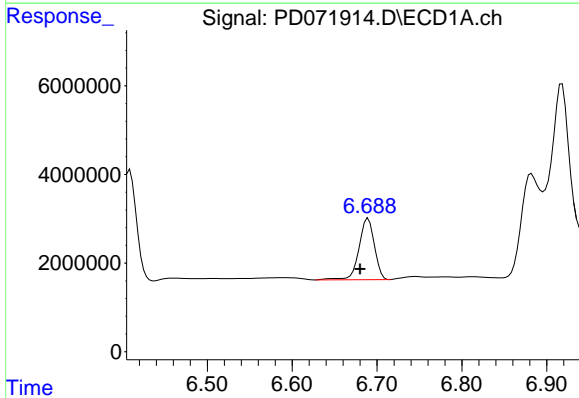


#19 Endosulfan Sulfate  
 R.T.: 6.409 min  
 Delta R.T.: 0.010 min  
 Response: 32489948  
 Conc: 12.11 ng/ml

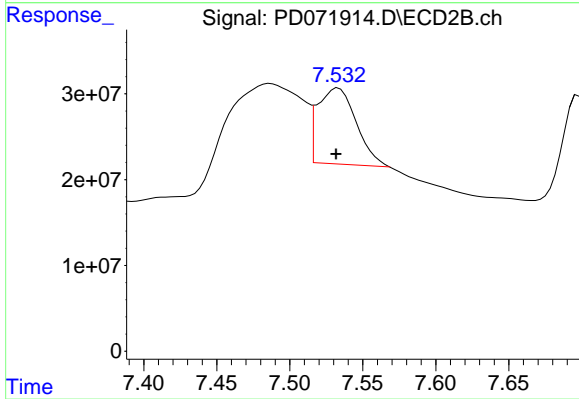
Instrument :  
 ECD\_D  
 ClientSampleId :  
 PB147669BSD



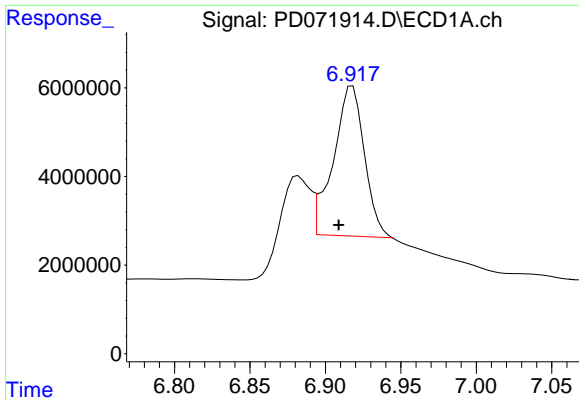
#19 Endosulfan Sulfate  
 R.T.: 7.207 min  
 Delta R.T.: 0.005 min  
 Response: 138469240  
 Conc: 12.42 ng/ml



#20 Methoxychlor  
 R.T.: 6.690 min  
 Delta R.T.: 0.010 min  
 Response: 17547310  
 Conc: 11.72 ng/ml



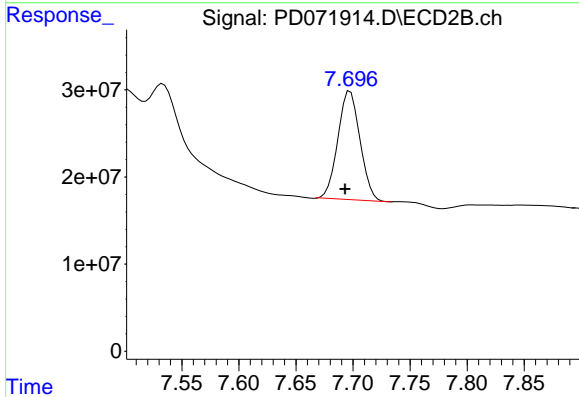
#20 Methoxychlor  
 R.T.: 7.532 min  
 Delta R.T.: 0.000 min  
 Response: 157540375  
 Conc: 25.92 ng/ml m



#21 Endrin ketone

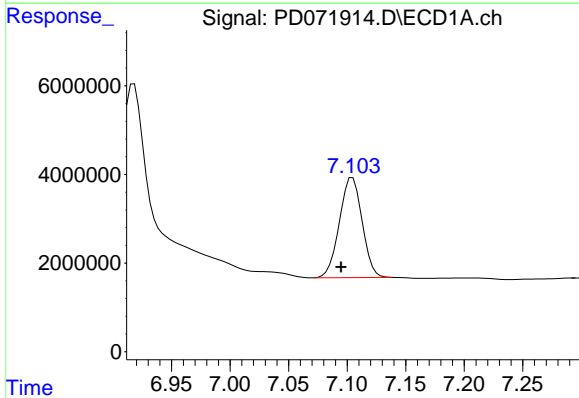
R.T.: 6.917 min  
 Delta R.T.: 0.008 min  
 Response: 47822775  
 Conc: 15.94 ng/ml

Instrument :  
 ECD\_D  
 ClientSampleId :  
 PB147669BSD



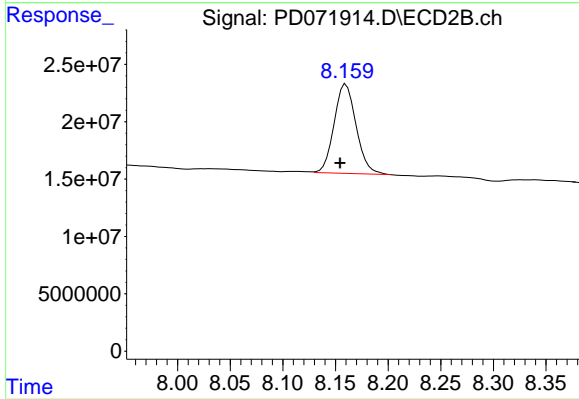
#21 Endrin ketone

R.T.: 7.696 min  
 Delta R.T.: 0.003 min  
 Response: 167955025  
 Conc: 13.50 ng/ml m



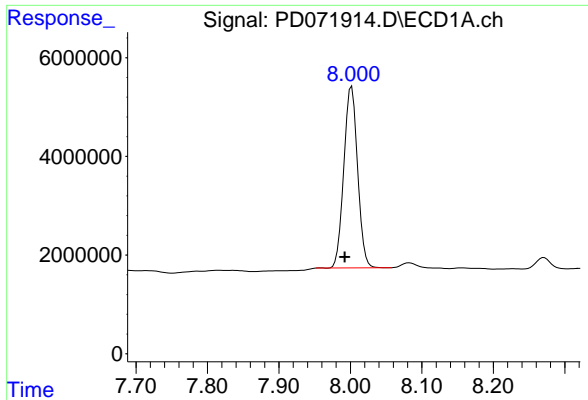
#22 Mirex

R.T.: 7.103 min  
 Delta R.T.: 0.008 min  
 Response: 30574377  
 Conc: 12.97 ng/ml m



#22 Mirex

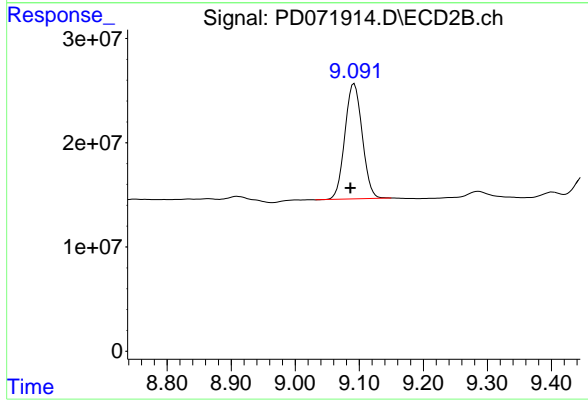
R.T.: 8.160 min  
 Delta R.T.: 0.005 min  
 Response: 112191380  
 Conc: 12.95 ng/ml



#28 Decachlorobiphenyl

R.T.: 8.002 min  
Delta R.T.: 0.010 min  
Response: 49252368  
Conc: 19.55 ng/ml

Instrument :  
ECD\_D  
ClientSampleId :  
PB147669BSD



#28 Decachlorobiphenyl

R.T.: 9.092 min  
Delta R.T.: 0.006 min  
Response: 207738902  
Conc: 22.34 ng/ml